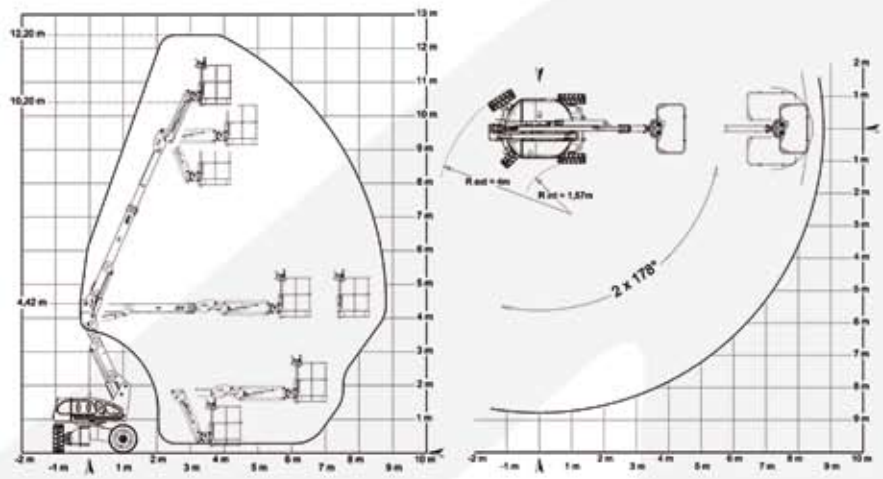
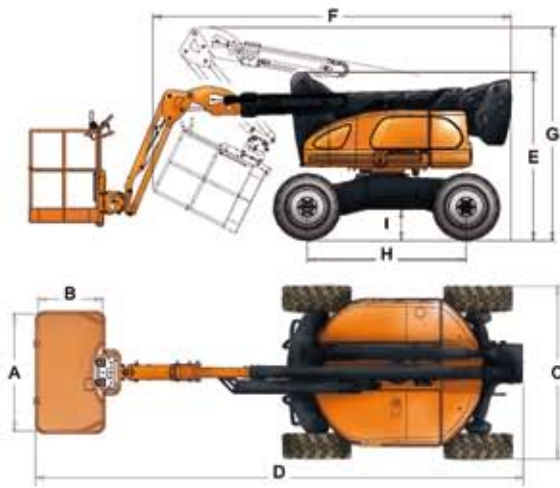


ATN

ZEBRA 12

Rough Terrain 4x4 articulating boom lift





ZEBRA 12

ADVANTAGES

- Outstanding horizontal reach.
- High ground clearance.
- High drive speed.
- Proportional intuitive drive and lift controls.
- Easy to maintain (on-board diagnostic screen system).
- Designed and manufactured for heavy-duty use.

STANDARD FEATURES

- Overload sensor.
- Lifting facilities.
- On-board LCD colour diagnostic screen system.
- Rough terrain special tyres.

OPTIONS

- GPS location mapping and telematics control system.
- 220V AC power to platform.
- Air line to platform.
- Special paint colour(s).



This product complies with European regulations in force (EN 280).
Due to our constant improvement policy,
ATN reserves the right to make any modifications
without any prior notice.



6, impasse ZI de Suriray n°2 - 47400 Tonneins - FRANCE
Tel. : + 33 553 761 235 - Fax : + 33 553 880 107
e-mail : contact@atnplatforms.com

		ZEBRA 12
	Working height	12,20 m (40 ft. 0,3 in.)
	Platform height	10,20 m (33 ft. 5,5 in.)
	Horizontal reach	8,50 m (27 ft. 10,6 in.)
	Up and over clearance	4,42 m (14 ft. 6 in.)
	Lift capacity	230 kg (507 lbs.)
	Turntable rotation	2 x 178°
	Platform rotation	2 x 90°
	Turntable tailswing	zero
	Jib rotation	133°
A	Platform width	1,45 m (4 ft. 9 in.)
B	Platform length	0,80 m (2 ft. 7,5 in.)
C	Width	1,94 m (6 ft. 4,4 in.)
D	Length - stowed	6,05 m (19 ft. 10 in.)
E	Height - stowed	2,11 m (6 ft. 11 in.)
F	Length - storage	4,50 m (14 ft. 9 in.)
G	Height - storage	2,68 m (8 ft. 9,5 in.)
H	Wheelbase	2,00 m (6 ft. 6,7 in.)
I	Ground clearance centre	0,39 m (1 ft. 3 in.)
	Turning radius - inside	1,57 m (5 ft. 1,8 in.)
	Turning radius - outside	4,00 m (13 ft. 1,5 in.)
	Tyres	LSW305-546

	Drive speed - stowed	6 km/h (3,73 mph)
	Drive speed - raised	1 km/h (0,62 mph)
	Gradeability *	45%
	Tilt value	4°
	Weight	5150 kg (11,353 lbs)
	Max. ground bearing pressure	3 kg / cm ² (43 psi / in. ²)

	Diesel engine	KUBOTA D1105 19 kW
	Fuel tank capacity	54 L (14,3 gal.)
	Hydraulic tank capacity	60 L (15,8 gal.)
	Auxiliary power unit	12V DC

* See operator's manual for details regarding slope ratings.

