



the power of clean energy



Z40N
Z45N
Z49N

The Carer forklifts range is meant to be a practical response to the demands of handling many application areas. And 'the fruit of attention and listening to our customers who have reserved all these years. We understand however that every activity and every company has its own characteristics that determine its competitive advantage. So we are ready to share your ideas and transform them as quickly as possible in a new logistics solution.

Carer has a wide range of three and four wheels electric forklifts with capacity ranging from 0.8 to 25 t, chosen by careful, demanding and international customers.

Z40-45-49N series trucks provide low running costs, extended autonomy, high performance and excellent visibility. In addition, the turning radius is one of the best in this category. These characteristics make Z40-45-49N series ideal in any work situation; they can perform even the most difficult tasks with ease.

carer

Z40N
Z45N
Z49N



CONFORT

Driving position is large and offers maximum visibility in every direction. The layout of controls and instruments on board follow the ergonomic dimensioning.

The best driving position is easily achieved by adjusting the tilt angle and depth of the steering wheel column and act on the levers which adjust the wide seat.

The large cushioned seat is adjustable in every direction and even under the weight of the operator. The armrests are reclining.

A large handle with two wide steps provide access to the driver's seat. Sensational visibility



INSTRUMENTATION

Forklift drivers should never be distracted!

All details on the functionality of the truck are condensed into a single, comprehensive tool of control "EasyInfo" that consists of a set of warning lights and a display showing the hours worked and the state of battery charge.

When the battery reaches the download limit, the Easy Info locks the lifting function.

MOTORS

CARER electric motors stand out for their high efficiency and torque.

The electronically dosed power confers to Z series trucks unparalleled acceleration, speed and maneuverability.

DRIVE

The front differential gear is composed of a double reducer: the first one consists of a bevel gear set instead the second one is directed to the wheels through epicycloidal reducers.

STEERING AXLE

Z series utilize a tough rear axle that allows obtaining a very high steering angle.

The hydraulic jack is installed in a protected position and the kinematic motions are equipped with spherical joints.



POWER STEERING

The hydro-drive "Load sensing" type optimizes energy consumption and enhances dynamic performances perfectly combining the lightness of the steering wheel with the precision of the guide.

BRAKING SYSTEM

The braking system is powerful and can be well modulated. The friction material used is asbestos free.

The electronic braking energy regeneration occurs by reversing the direction of travel, released and lightly pressing the brake pedal.

Constant use of electronic braking also considerably reduces the maintenance costs of the hydraulic braking system.



ELECTRONICS

All truck functions are managed by sophisticated microprocessor-controlled high frequency MOS electronics and regenerative braking.

The chopper is protected against rainwater infiltration and is cooled by apposite fans. Installation behind the driver's seat facilitates accessibility and maintenance.

LED-type self-diagnosis system.



MASTS

The lift units allow excellent visibility.

The mast profiles are cold treated to provide optimum resistance to bending and twisting.

The lift cylinders are external to the profiles.

The integrated side shift does not reduce the rated capacity of the truck.



TYRES

Superelastic tyres are fitted as standard, but cushion type are also available if required.

BATTERY

To increase autonomy of work there are several different batteries of various amperage available.

The battery, which can be removed from the vehicle laterally, can be replaced using a hoist or using another forklift. Power rating 96V.



ELECTRIC FORKLIFT TRUCKS

Z40N**Z45N****Z49N**

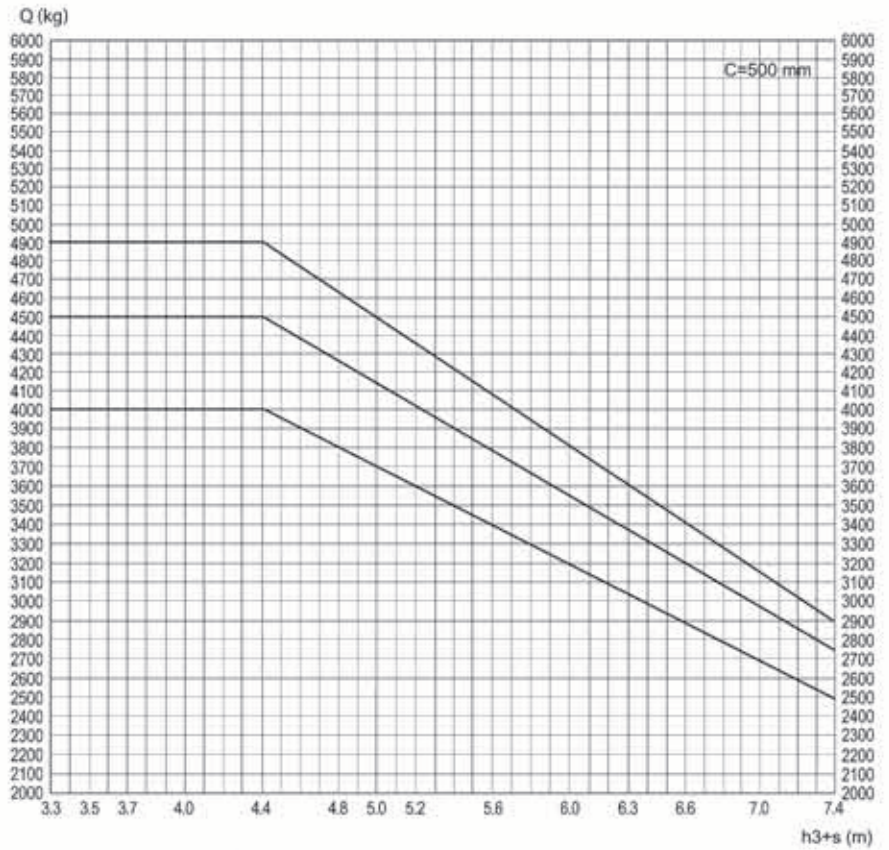
			Z40N			Z45N		Z49N		
SPECIFICATION	1,1	Manufacturer			CARER					
	1,2	Model			Z40N	Z45N	Z49N			
	1,3	Power unit: electric, diesel, L.P.G.			electric					
	1,4	Drive: hand operated, on foot, seated operator			seated driver					
	1,5	Capacity	Q	(t)	4.0	4.5		4.9		
	1,6	Load centre	C	(mm)	500					
	1,8	Load distance	X	(mm)	600 (1)					
	1,9	Wheelbase	Y	(mm)	1790					
	WEIGHTS	2,1	Weight		(kg)	7300	7650		8450	
2,2		Axle weight with nominal load front/rear		(kg)	10060/1240	10800/1350		11600/1750		
2,3		Axle dead weight front/rear		(kg)	3700/3600	3650/4000		3750/4700		
WHEELS AND TYRES	3,1	Tyres type: CU=cushion, SE=superelastic, PN=pneumatic, SEG=twin superel. VLK=vulkollan PNG=twin pneumatic			C - SE - SEG					
	3,2	Front wheels dimensions			711x254 - 250-15 - 7.00-15			711x305 - 28x12.5-15 - 7.00-15		
	3,3	Rear wheels dimensions			559x178 - 23x9-10			559x203 - 23x9-10		
	3,5	Wheels: front/rear number (x=drivewheels)			2X/2 (SEG: 4X/2)					
	3,6	Front tread	b10	(mm)	1140 - 1168 - 1296			1095 - 1100 - 1296		
	3,7	Rear tread	b11	(mm)	1027					
DIMENSIONS	4,1	Tilt lifting group, α =forward / β =backward	α/β	(°)	4/8 (2)					
	4,2	Minimum collapsed mast height	h1	(mm)	2750					
	4,3	Free lift	h2	(mm)	100					
	4,4	Lifting height	h3	(mm)	3700					
	4,5	Maximum collapsed mast height	h4	(mm)	4550					
	4,7	Height of operator's overhead protection guard	h6	(mm)	2700					
	4,8	Seat height	h7	(mm)	1685					
	4,12	Towing hook height	h10	(mm)	750					
	4,19	Overall length	L1	(mm)	3750			3820		
	4,20	Length including fork thickness	L2	(mm)	2750			2820		
	4,21	Maximum width	b1/b2	(mm)	1390 - 1390 - 1710			1400 - 1400 - 1710		
	4,22	Fork dimensions	exsL	(mm)	150x50x1000					
	4,23	Fork carriage width iso 2328/30, FEM/A,B			3A					
	4,24	Fork carriage width	b3	(mm)	1150					
	4,31	Mast height from ground (braking of load)	m1	(mm)	150					
	4,32	Centre from ground (braking of load)	m2	(mm)	120					
	4,33	Aisle width with pallet 1000x1200 and 1200 side loading	Ast	(mm)	4795			4875		
	4,34	Aisle width with pallet 800x1200 and 800 side loading	Ast	(mm)	4820			4900		
	4,35	Turning radius	Wa	(mm)	2400			2480		
PERFORMANCE	4,36	Minimum distance from the truck centre line rotation travel speed	b13	(mm)	900					
	5,1	Travel speed, loaded/unloaded		(km/h)	18/21.6	17.6/21		16.8/19.2		
	5,2	Lift speed, loaded/unloaded		(m/s)	0.36/0.56	0.35/0.54		0.33/0.50		
	5,3	Lift descent speed, loaded/unloaded		(m/s)	0.50/0.40					
	5,5	Drawbar pull, loaded/unloaded (S2 60')		(N)	6200/6800	6000/6700		5850/6600		
	5,6	Max. drawbar pull, loaded/unloaded (S2 5')		(N)	14400/15000	14200/14900		14050/14800		
	5,7	Surmountable gradient loaded/unloaded (S2 30')		(%)	9.0/15	8.0/14		7.0/12		
	5,8	Max. surmountable gradient, loaded/unloaded (S2 5')		(%)	12/20	11/19		10/17		
	5,9	Acceleration time		(s)	5.2/5	6/5.5		6.8/6.2		
ENGINE / BATT.	5,10	Service brake: mech./hydr./electr.			hydraulic / electric					
	6,1	Drive motor, power (S2 60')		(kW)	20					
	6,2	Lift-motor, power (S3 20%)		(kW)	18					
	6,4	Battery voltage	U	(V)	96					
	6.4.1	Rated capacity	K5	(Ah)	560 (3)			640 (3)		
OTHERS	6,5	Battery min/max weight		(kg)	1900/2800			2300/2800		
	8,1	Command type			mosfet					
	8,2	Equipment work pressure		(bar)	160					
	8,4	Noise level at driver's ear		(dBA)	-					

VDI 2198

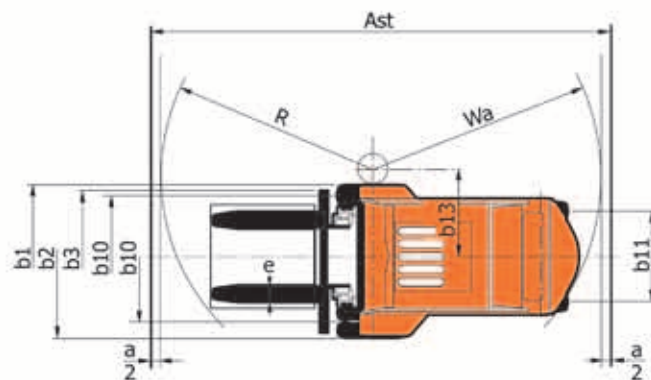
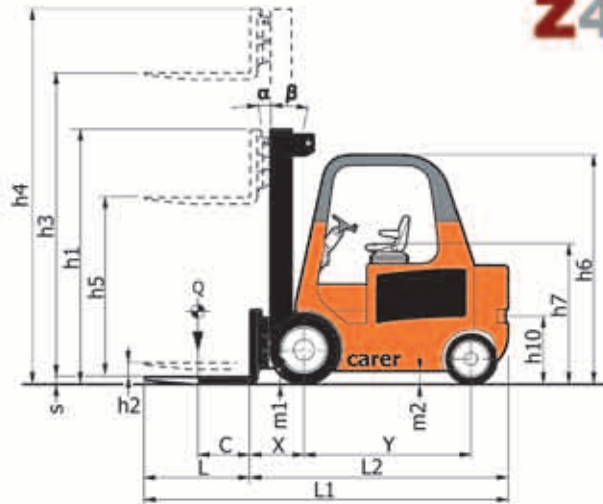
Rev2 07/04/2011

(1) With integrated side shifter. (2) with lifting height > 4.5 m, 3°/ 7°. (3) Other capabilities on demand

The performance data refer to the forklift truck in perfect working order, with battery weighing no less than the minimum indicated, recharged, well preserved and a voltage (closed circuit) not less than the rated capacity.



Z40N
Z45N
Z49N



a=200



CARER srl

CARRELLI ELEVATORI ELETTRONICI
ELECTRONIC FORK LIFT TRUCKS

Italy

48010 Cotignola Ravenna I
Via Copernico 13
Tel: +39 0545 908611
Fax: +39 0545 41615
www.carer.it info@carer.it

Carer Deutschland GmbH

Enschedestraße 14
48529 Nordhorn
Tel: +49 (0)5921 879 198
Fax: +49 (0)5921 879 150
email: info@carerdeutschland.de

Carer Nederland

Fleminglaan 5
2289CP Rijswijk
Tel: +31 (0)70 413 55 99
Fax: +31 (0)70 413 55 90
email: info@carernederland.nl