

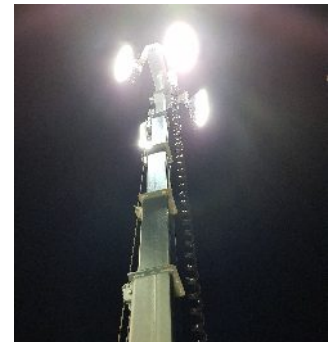
V20 HYPER

The V20 Hyper is a new mobile lighting tower equipped with 4 x320W highly efficient floodlights. It provides more than 160 hours of run time and delivers one of the lowest sound pressure levels in the industry- only 58 dB(A) at 7m. The exclusive Hyper version, with Omnia® LED Technology, allows the operator to point the floodlights in every direction to provide 360 illumination and are available with anti-glare options.



GTL01 DIGITAL CONTROLLER

A digital controller specifically studied to manage every function of the light tower for ultimate control.



V20 Hyper K2

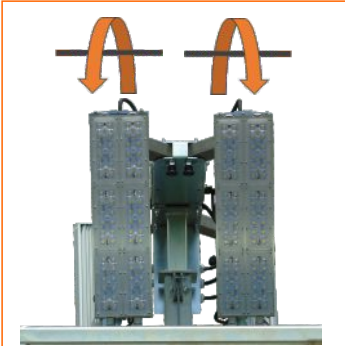
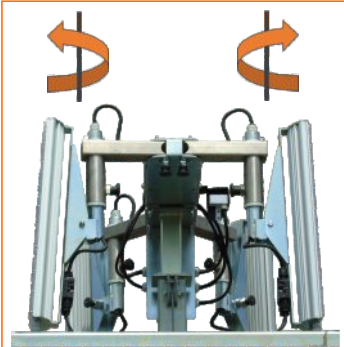
V20 Hyper Y2

V20 Hyper P2

| TECHNICAL DATA | | V20 Hyper K2 | V20 Hyper Y2 | V20 Hyper P2 |
|------------------------------|-------------------------|-----------------------|-----------------------|-----------------------|
| Minimum dimensions (mm) | Lenght x Width x Height | 2200 x 1400 x 2440 | 2200 x 1400 x 2440 | 2200 x 1400 x 2440 |
| Maximum dimensions (mm) | Lenght x Width x Height | 2200 x 1850 x 8500 | 2200 x 1850 x 8500 | 2200 x 1850 x 8500 |
| Dry weight (kg) | | 980 | 980 | 980 |
| Lifting system | M:Manual / H:Hydraulic | H | H | H |
| Mast rotation (°) | | 340 | 340 | 340 |
| Lamps power (W) | | 4 x 320 | 4 x 320 | 4 x 320 |
| Lamps type | MH:MetalHalide / LD:LED | LD | LD | LD |
| Total lumen (Lm) | | 184000 | 184000 | 184000 |
| Illuminated area (m²) | 180°/360° | 4500/4200 | 4500/4200 | 4500/4200 |
| Engine | | Kubota Z482 | Yanmar 2TNV70 | Perkins 402D-05 |
| Engine cooling | L: Liquid / A: Air | L | L | L |
| Cylinders (q.ty) | | 2 | 2 | 2 |
| Engine speed (RPM) | 50 / 60 Hz | 1500 / 1800 | 1500 / 1800 | 1500 / 1800 |
| Liquid containment (110%) | √:Yes / ●:No | √ | √ | √ |
| Alternator | kVA/V/Hz | 5/220/50 - 5/240/60 | 5/220/50 - 5/240/60 | 5/220/50 - 5/240/60 |
| Outlet Socket | kVA/V/Hz | 2/220/50 - 2/240/60 | 2/220/50 - 2/240/60 | 2/220/50 - 2/240/60 |
| Inlet plug | A/V/Hz | 16/220/50 - 16/240/60 | 16/220/50 - 16/240/60 | 16/220/50 - 16/240/60 |
| Avg. sound pressure | dB(A) @ 7m | 58 | 59 | 59 |
| Wind speed resistance (km/h) | | 110 | 110 | 110 |
| Tank capacity (liters) | | 100 | 100 | 100 |
| Total running time (h) | | 167 | 149 | 145 |

V20 HYPER LIGHT TOWER

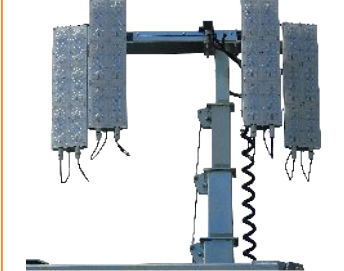
OMNIA® LED TECHNOLOGY



360°



180°



THE LOWEST NOISE LEVEL!

Through innovation we have reduced the noise level!
The V20 light tower emits only 58 dB(A) @ 7 meters.

LONG RUNNING TIME

Thanks to the V20's fuel saving features such as the small engine and LED lamps, this model can run up to 167 hours without refuelling.

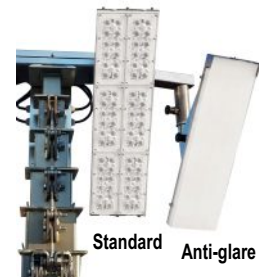
COMPACT SHAPE

Save transport costs with the V20!
Up to 13 units can be loaded on a single truck.

DOUBLE POWER

You can connect a V20 to another V20 and run two lighting towers with only one engine.

ANTI-GLARE OPTION



OPTIONS AVAILABLE

- Anti-glare shells
- Low speed site-tow trailer (standard)
- Road trailer type A (straight)
- Road trailer type C (adjustable)
- Road trailer type D (straight - short version)
- Ball hitch type 50 mm
- Eyelet hitch type 50 mm
- Eyelet hitch type 68 mm for road trailer type C
- Documents for EU road registration
- Additional spare tyre with support
- Pre-heating system
- AMOSS kit
- 110V sockets
- Earth picket with 5m cable
- Plastic box for documents
- Dedicated color
- Shut-off valve
- Certified spark arrestor
- Hot-dip zinc coating of mast sections
- Insulation monitoring device
- Remote controller (telemetric)
- Remote emergency stop controller
- Schuko outlet socket (IP67)
- Darkness sensor