

[www.palazzani.it](http://www.palazzani.it)

# The new RAGNO generation

## RAGNO TSJ 35

available on rubber tracks or wheels, in standard diesel+AC "bi-energy" execution, or DC powered "ECO" version variable set-up with automatic self-levelling remote radio-control system and automatic "area manager system" for 120 or 200 kg s.w.l. up to 35m m.h





# RAGNO TSJ 35

ROTAZIONE 360° CONTINUA

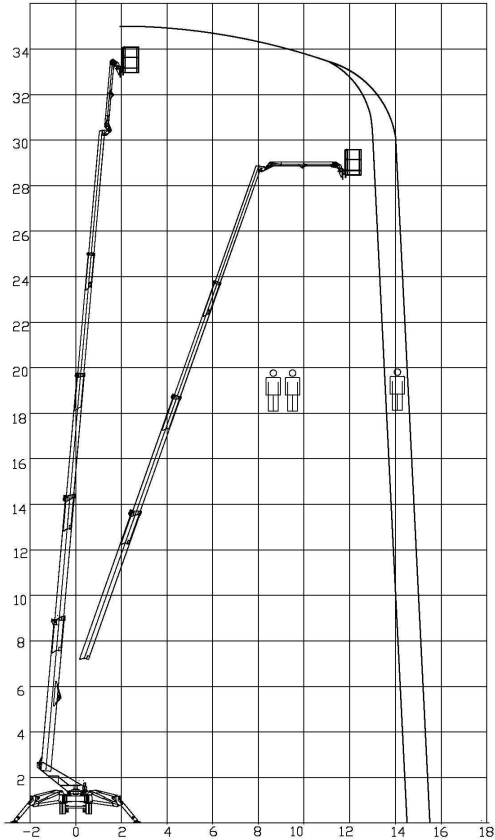
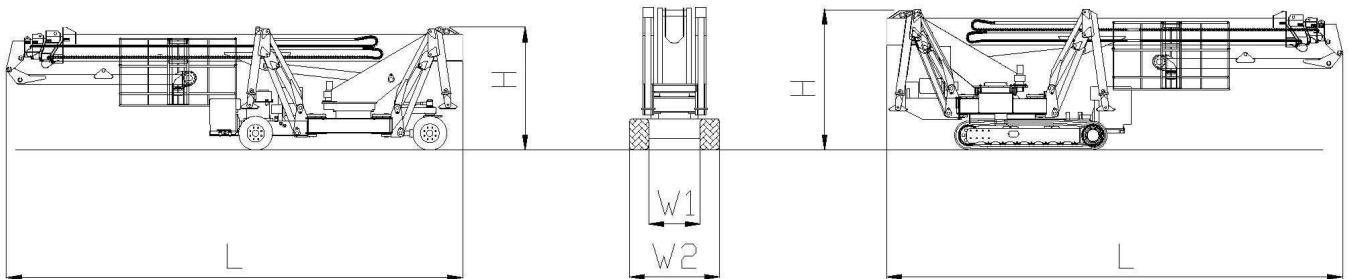


diagramma variabile in base alla stabilizzazione  
working area variable according to set-up configuration



RAGNO TSJ 35R	MODELLO	MODEL	MODEL	MODELE	RAGNO TSJ 35C
35 M	ALTEZZA MAX	MAX WORK H.	MAX. ARBEITSHÖNE	HAUTEUR MAXI	35 M
10 KW	MOTORE DIESEL	DIESEL ENGINE	DIESEL MOTOR	MOTEUR DIESEL	20 KW
2.2 KW - 230V	MOTORE ELETTRICO	ELECTRIC MOTOR	ELEKTROMOTOR	MOTEUR ELECTRIQUE	2.2 KW - 230V
25 %	PENDENZA MAX	MAX SLOPE	MAX STEIGFAHIGKEIT	PENTE MAXI	40%
2.0 KM/H	VELOCITA' MAX	MAX SPEED	MAX GESCHWINDIGKEIT	VITESSE MAXI	1.4 KM/H
360° ENDLESS	ROTAZIONE BRACCIO	TURRET SLEWING	DREHTURM	ROTATION TOURELLE	360° ENDLESS
195X70 CM	NAVICELLA AEREA	AERIAL CAGE	ROTATION ARBEITKORB	PANIER	195X70 CM
90° + 80°	ROTAZIONE NAVICELLA	CAGE ROTATION	KORB SCHWENKEN	ORIENTATION PANIER	90° + 80°
120-200 KG	PORTATA UTILE	SAFE WORK LOAD	ZULADUNG	CHARGE UTILE	120-200 KG
1.090-1.400 MM	LARGHEZZA (W1-W2)	WIDTH (W1-W2)	BREITE (W1-W2)	LARGEUR (W1-W2)	1.500 MM
7.700 MM	LUNGHEZZA (L)	LENGTH (L)	BAULÄNGE (L)	LONGUEUR	7.700 MM
1.985 MM	ALTEZZA (H)	HEIGHT (H)	HÖNE (H)	HAUTEUR (H)	2.350 MM
5.800 KG	PESO	WEIGHT	GEWICHT	POIDS	6.500 KG
3.290 MM	PIAZZAMENTO MINIMO	MIN SET-UP SPREAD	MIN ABSTÜTBREITE	STABILISATION MINI	3.290 MM

## Palazzani

INDUSTRIE SPA

25050 PADERNO F.C. (BS) - ITALIA

Tel ++ 39 030 6857073 - Fax ++ 39 030 657079

platforms@palazzani.it www.palazzani.it

R302B