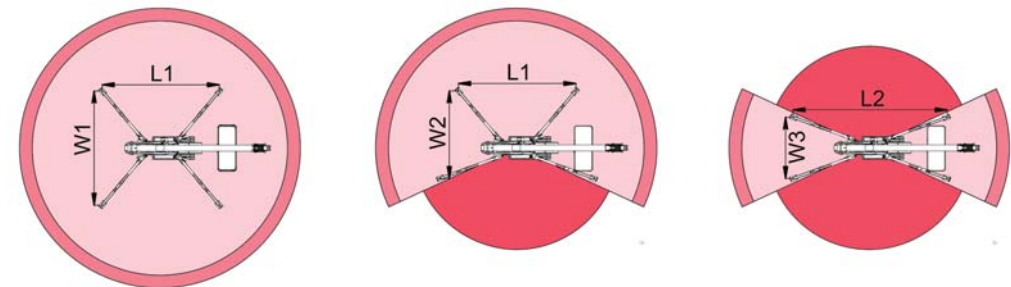
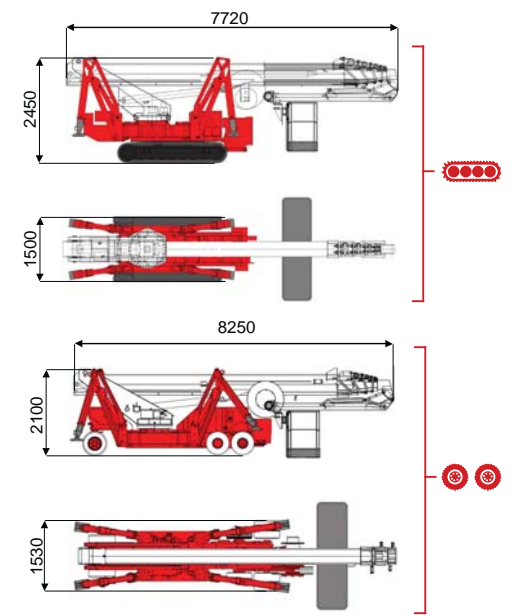
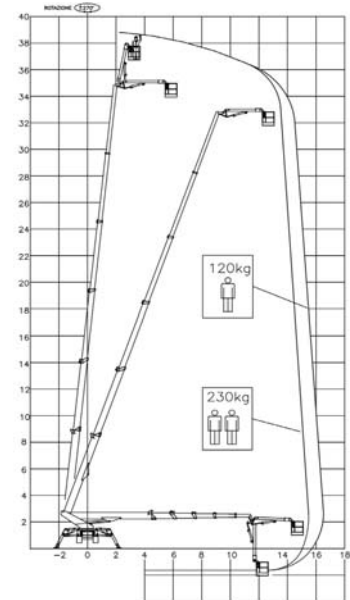


39 m ↑
16,5 m →
230 Kg 🧑🧑



15500 mm	16500 mm	10000 mm	L1	L2	W1	W2	W3
230 kg	120 kg	120/230 kg	5021 mm	6185 mm	4596 mm	3740 mm	2886 mm

BI-ENERGY Diesel+AC	🔋	🧑	🧑	🧑🧑	📐	🔧	📏	🔄	🏠	📊	🕒	⚖️	🏗️	🏗️	🏗️	🏗️	🏗️	🏗️	🏗️	🏗️
TSJ 39/C	🔋	39 m	16,5 m	230 kg	175°	660°	180x70 cm	90°+80°	2,9-4,6 m	23%	40%	2,5 km/h	8200 kg	47 kN	3,67 kN/m²	5,54 kN/m²	1500 mm	7720 mm	2450 mm	
TSJ 39/R	🔋	39 m	16,5 m	230 kg	175°	660°	180x70 cm	90°+80°	2,9-4,6 m	23%	25%	1,5 km/h	8200 kg	47 kN	3,60 kN/m²	5,54 kN/m²	1530 mm	8250 mm	2100 mm	

ECO	DC+AC	🔋	🔋	+ Kg	🔄	🕒	🔋	Electropump
		Battery type	Battery charge	Add. Weight	Autonomy	Charging time		
		48V 270 A/h 5h	230V-48V 45A	400 kg	6-7 h endless	7h		48V 9 kW