

[International Sales Networks of **KOMAC**]



Contact

KOMAC
Technology with Passion



www.komac.co.kr

KOMAC HEAD OFFICE

6F, Shinsong B/D, 25-4, Yeouido-Dong, Yeoungdeungpo-Gu, Seoul, Korea
TEL : +82-2-761-0880(Rep.) FAX : +82-2-761-0049 E-MAIL : salesdiv@komac.co.kr, salesmkt@komac.co.kr

KOMAC AMERICA, INC.

9009 FREEWAY DR. SUITE 1 MACEDONIA, OH 44056
TEL : +1-330-468-0833-5 FAX : +1-330-468-0847
E-MAIL : salesmain@komac.co.kr, salesmain2@komac.co.kr

KOMAC CHINA / QINGDAO

Puji, Industrial Park, Jlaozhou, Qingdao, China
Tel : + 86-532-8626-0952 Fax : + 86-532-8626-0951
E-Mail: salesdiv@komac.co.kr, sales5@komac.co.kr, sales3@komac.co.kr

KOMAC EUROPE B.V

Vlaardingweg 40, 3044 CK Rotterdam, The Netherlands
Tel: +31-10-437-6292 Fax: +31-10-437-8908
E-Mail: europe@komac.co.kr

KOMAC INDIA

216, Mehta House 36, Pandita Ramabai Road, Mumbai-400 007, India
Tel : + 91-22-2362-5656 Fax : +91-22-2364-9401
E-Mail: salesdiv@komac.co.kr, salesmkt@komac.co.kr, sales@tauraseng.com

090420

KOMAC Attachments Series

Break Anything... Except the Bank



KOMAC
Technology with Passion



KOMAC Attachment Technology

CONTENTS

- Selections of **Grab Series**
- **Compactor / Quick Coupler**
- Selections of **Crusher**
- Selections of **Shear**
- Quality Control Inspection Flow
- Quality Assurance System



KOMAC

KOMAC, the reliable manufacturer of the boom mounted hydraulic breaker and other hydraulic attachments (Hydraulic Crusher, Pulverizer, Vibrating Compactor, Vibrating Roller, Pile Driver) introduces the best complete selection of hydraulic breakers available all over the world.

Powered by the hydraulic system of your excavator, skid steer loader, backhoe loader and wheel loader, the KOMAC hydraulic breaker breaks the heavily-reinforced concrete and rocks efficiently at the lower cost.

The advanced technology of KOMAC hydraulic breaker provides customers with increased satisfactions in both productivity and working efficiency.

KOMAC Hydraulic Breaker.
Best answers to all your breaker questions.



CE Certificate



Certificate of D-U-N-S number



Homologation Certificate

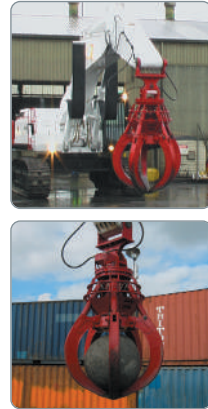


ISO 9001



AEM Member

Scrap Grab :



Specification - A-Type

Item / Model	Unit	SSA600	SSA800	SSA1000	SSA1500
Capacity	liter	600	800	1,000	1,500
Weight	kgf	1,200	1,560	1,800	2,200
Inside operate length	mm	1,774	1,945	2,178	2,513
Out operate length	mm	928	961	1,198	1,376
Inside operate height	mm	1,304	1,392	1,600	1,793
Out operate height	mm	1,535	1,647	1,863	2,081
Suitable Excavator	ton	12~18	18~25	28~35	36~42

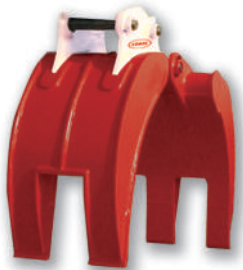
Specification - B-Type

Item / Model	Unit	SSB600	SSB800	SSB1000	SSB1500	SSB2000
Capacity	liter	600	800	1,000	1,500	2,000
Weight	kgf	1,050	1,300	1,500	1,800	2,100
Inside operate length	mm	1,859	1,939	2,013	2,403	2,699
Outside operate length	mm	849	969	1,192	1,315	1,705
Inside operate height	mm	1,550	1,674	1,969	2,107	2,673
Outside operate height	mm	1,850	1,970	2,203	2,381	2,939
Suitable Excavator	ton	12~18	18~25	28~35	36~42	43~47

Above specifications are subject to change without prior notice for quality improvement.

CHARACTERISTICS	CHARACTERISTICS FOR USAGE	DESIGN STRUCTURES
<ul style="list-style-type: none"> Design for minimum height can load or unload objects to high place. Main frames are made by HARDOX for longer life time. Teeth are replaceable. 	<ul style="list-style-type: none"> It can be loading or unloading much scrap iron and waste paper. Hydraulic free rotation (option) Protection device of cylinder rod Change bushing 	<ul style="list-style-type: none"> Pipe Setting Pressure <ul style="list-style-type: none"> - Close Pressure: 250kg/cm² - Open Pressure : 250kg/cm² Rotator Pressure : 100~140kg/cm² Motor Drain Pipe Setting <ul style="list-style-type: none"> - Setting : R.P. 140kg/cm² - Non-Setting : R.P. 100kg/cm²

Mechanical Grab :



Specification

Item / Model	Unit	SMG10	SMG20	SMG30	SMG40	SMG50	SMG60
Weight	kgf	780	1,330	1,560	1,980	2,450	2,990
Full Open(A)	mm	2,200	2,600	2,900	3,100	3,250	3,500
Full Closed(B)	mm	230	250	260	280	310	330
Height Closed(C)	mm	1,330	1,460	1,580	1,700	1,810	1,970
Width Upper Moveable Jaw	mm	640	730	730	800	840	960
Width Lower Fixed Jaw	mm	1,000	1,140	1,140	1,240	1,338	1,520
Suitable Excavator	ton	10~15	15~20	20~25	25~30	30~40	40~50

Above specifications are subject to change without prior notice for quality improvement.

CHARACTERISTICS
<ul style="list-style-type: none"> Removal of broken pieces Usage of qualified raw material for extension of its durability. Replaceable teeth with welded teeth Easy to install to the excavator Possible usage of quick coupler

Clam shell Grab :



Specification

Item / Model	Unit	SC600	SC800	SC1000	SC1500	SC2000
Capacity	liter	600	800	1,000	1,500	2,000
Weight	kgf	720	980	1,200	1,500	1,810
Inside operate length	mm	2,223	2,223	2,328	2,641	2,735
Outside operate length	mm	1,752	1,752	1,856	2,151	2,247
Inside operate height	mm	1,408	1,408	1,408	1,408	1,425
Outside operate height	mm	2,200	2,200	2,253	2,404	2,450
Operate width	mm	600	800	900	1,200	1,500
Suitable Excavator	ton	12~18	18~25	28~35	36~42	43~47

Above specifications are subject to change without prior notice for quality improvement.

CHARACTERISTICS	CHARACTERISTICS FOR USAGE	DESIGN STRUCTURES
<ul style="list-style-type: none"> Design for minimum height can load or unload objects to high place. Teeth are replaceable. 	<ul style="list-style-type: none"> Use for carrying, loading, or unloading Use for digging and dredging One cylinder or two cylinder 	<ul style="list-style-type: none"> Pipe Setting Pressure <ul style="list-style-type: none"> - Close Pressure: 250kg/cm² - Open Pressure : 250kg/cm² Rotator Pressure : 100~140kg/cm² Motor Drain Pipe Setting <ul style="list-style-type: none"> - Setting : R.P. 140kg/cm² - Non-Setting : R.P. 100kg/cm²

Stone Grab :



Specification

Item / Model	Unit	ST600	ST800	ST1000	ST1500
Capacity	liter	600	800	1,000	1,500
Weight	kgf	1,325	1,526	1,804	2,100
Inside operate length	mm	1,329	1,440	1,760	2,057
Outside operate length	mm	121	130	140	145
Operate width A	mm	520	520	572	650
Operate width B	mm	900	900	1,004	1,100
Inside operate height	mm	833	1,050	1,150	1,300
Outside operate height	mm	777	1,041	1,189	1,320
Suitable Excavator	ton	12~18	18~25	28~35	36~42

Above specifications are subject to change without prior notice for quality improvement.

CHARACTERISTICS	DESIGN STRUCTURES
<ul style="list-style-type: none"> Design for minimum height can load or unload objects to high place. Main frames are made by HARDOX for longer life time Use for carrying industrial waste Use for loading and unloading rocks 	<ul style="list-style-type: none"> Pipe Setting Pressure <ul style="list-style-type: none"> - Close Pressure: 250kg/cm² - Open Pressure : 250kg/cm² Rotator Pressure : 100~140kg/cm² Motor Drain Pipe Setting <ul style="list-style-type: none"> - Setting : R.P. 140kg/cm² - Non-Setting : R.P. 100kg/cm²

Demolition Grab :



Specification

Item / Model	Unit	SG1500	SG2000	SG3000	SG4000
Capacity	liter	600	800	1,000	1,500
Weight	kgf	1,050	1,370	1,700	2,000
Inside operate length	mm	1,751	1,923	2,082	2,120
Outside operate length	mm	814	883	982	1,060
Operate width A	mm	900	1,030	1,080	1,160
Inside operate height	mm	596	744	770	794
Outside operate height	mm	762	905	956	1,006
Suitable Excavator	ton	12~18	18~25	28~35	36~42

Above specifications are subject to change without prior notice for quality improvement.

CHARACTERISTICS	DESIGN STRUCTURES
<ul style="list-style-type: none"> Design for minimum height can load or unload objects to high place. Main frames are made by Hardox for the longer life time Use for carrying industrial waste Use for loading and unloading rocks 	<ul style="list-style-type: none"> Pipe Setting Pressure <ul style="list-style-type: none"> Close Pressure: 250kg/cm² Open Pressure : 250kg/cm² Rotator Pressure : 100~140kg/cm² Motor Drain Pipe Setting <ul style="list-style-type: none"> Setting : R.P. 140kg/cm² Non-Setting : R.P. 100kg/cm²

Wood Grab :



Specification

Item / Model	Unit	SW300	SW600	SW800	SW1000	SW1500	SW2000
Capacity	liter	300	600	800	1,000	1,500	2,000
Weight	kgf	400	850	1,000	1,300	1,600	1,950
Inside operate length	mm	1,196	1,709	1,750	1,880	2,250	2,600
Outside operate length	mm	100	280	310	340	566	705
Inside operate height	mm	397	741	778	1,262	1,550	1,720
Outside operate height	mm	675	1,157	1,244	1,370	1,846	2,010
Suitable Excavator	ton	5	12~18	18~25	25~32	32~42	42~47

Above specifications are subject to change without prior notice for quality improvement.

CHARACTERISTICS
<ul style="list-style-type: none"> Designed optimization Strong structure of machine Use for wood, rail, junky yard, and laying pipe underground

Compactor / Quick Coupler

Compactor :



Specification

Division	Unit	KMC9			KMC13			KMC22			KMC35		
		Rotate Type	Plate Type	Pin Type	Rotate Type	Plate Type	Pin Type	Rotate Type	Plate Type	Pin Type	Rotate Type	Plate Type	Pin Type
Impulse force	kgf	3,900			4,600			16,093			15,400		
	lb	8,598			10,141			6,614			33,951		
Cycle per min	cpm	Max. 2,200			Max. 2,200			Max. 2,200			Max. 2,200		
	bar	100 ~ 130			100 ~ 130			100 ~ 130			100 ~ 130		
Relief pressure	Mpa	10 ~ 13			10 ~ 13			10 ~ 13			10 ~ 13		
	psi	1,450 ~ 1885			1,450 ~ 1885			1,450 ~ 1885			1,450 ~ 1885		
Oil flow (Max)	l/min	110			140			180			220		
	g/min	29			37			47.5			58		
Dimensions	mm	720 X 672			800 X 750			900 X 840			1,260 X 1,170		
	inch	28.34 X 26.45			31.49 X 29.52			35.43 X 33.07			49.60 X 46.06		
Weight	kgf	560	500	520	700	600	620	950	900	920	1,330	1,260	1,290
	lb	1,235	1,102	1,146	1,543	1,323	1,366	2,094	1,984	2,028	2,932	2,778	2,844
Base Machine	ton	4 ~ 9			9 ~ 18			20 ~ 30			30 ~		
	mm	939			1,040			1,172			1,638		
Length	inch	36.96			40.94			46.14			64.48		
	mm	672			750			840			1,170		
Width	inch	26.45			29.52			33.07			46.06		
	mm	681	630	787	686	680	826	736	754	980	1,003	1,040	1,314
Height	inch	26.81	24.80	30.98	27.00	26.77	32.5	28.97	29.68	38.58	39.48	40.94	51.73

Above specifications are subject to change without prior notice for quality improvement.

Quick Coupler :



Specification

Item / Model	Unit	KMQ 20H / P	KMQ 30H / P	KMQ 60H / P	KMQ 80H / P	KMQ 100P	KMQ 140P
Length	mm	451	585	829	971	1,086	1,198
Height	mm	250	287	378	488	544	592
Width	mm	235	282	404	505	570	625
Pin to Pin Distance	mm	198~230	255~295	380~480	440~500	510~530	570~580
Conclusion Width	mm	86~185	155~170	232~315	306~340	375~411	416~469
Conclusion Extent	mm	90~140	208~318	340~486	256~390	413~590	520~590
Top and Bottom distance that decrease	mm	159~165	150	220	275	300	360
Pin Diameter	∅	25~40	45~50	50~70	70~80	80~90	90~120
Weight	kgf	53	65	127	257	376	575
Working Pressure	kgf/cm ²	40~210	40~210	40~320	40~320	40~350	40~350
Necessity Flux	l/min	10~20	10~20	10~20	10~20	10~20	10~20
Suitable Excavator	ton	~3	3~5	7~15	18~26	27~30	30~

Above specifications are subject to change without prior notice for quality improvement.

CHARACTERISTICS

- KOMAC Compactor has high frequency vibration with high impact power to make quick work of any compaction task.
- We offered line of mounted compactor ranging in centrifugal force from 3,000kg~14,000kg.
- KOMAC vibrating compactor with service life, performance, and versatility fills many construction fields.
- They allow you to maximize the use of backhoe & excavators while substantially increasing your production over other methods.

CHARACTERISTICS

- FULL AUTOMATIC SAFETY SYSTEM**
 - A revolutionary technology of battery-powered switching system controls the switch, release or lock, at the safety pin from excavator power line not by its hydraulic line (patented). When electric power disconnected, it automatically switches to manual operation.
- ALL IN ONE**
 - One Body Design
 - No welding between Middle and Bottom Plate provides evenly distributed stress points, increasing durability 10 times more than the couplers with welded parts.
 - Versatility
 - Offering the most versatility ever, it enables you to use one coupler for multiple brands of attachment within the same excavator weight class.

Multi Crusher :

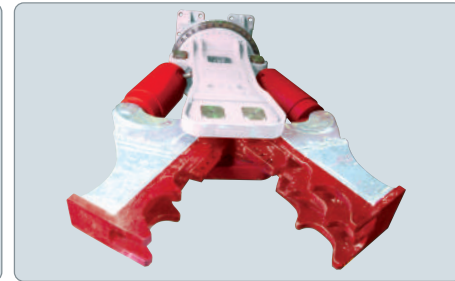


CHARACTERISTICS

- Replaceable jaw for multiple usage
- Cutting steel structure and pieces based on the strong power with efficient performance.
- Equipped the strongest level of dual cylinder to perform efficiency.
- Highest stability and durability with light weight.



TRIS22CHR-II



TRIS30PHR-II

Mini Crusher :



CHARACTERISTICS

- Refurbishment work for concrete buildings
 - The old building, that keeps strong foundation, needs to be changed the new layout or equipments.
 - To raise value of building with lower cost is repairing internal structure rather than reconstruction in the metropolis.
- New building needs to be changed is design.
- Refurbishment in old city
 - In order to keep beautiful outside sight and view in old city, permitted only the inside partially demolition.
 - In this case, mini crusher is the most powerful attachment not generating vibration.
- In order to change the layout of a building under construction.

Specification

Item / Model	Unit	TRIS22CHR-II	TRIS22PHR-II	TRIS30CHR-II	TRIS30PHR-II
Weight	kgf	1,680	1,760	2,630	2,800
	lb	3,704	3,880	5,798	6,173
Overall Length	mm	2,128	2,024	2,418	2,631
	inch	83.78	79.8	95.2	103.58
Overall Width	mm	1,354	1,542	1,773	1,869
	inch	53.31	60.71	69.80	73.58
Max. Opening Width	mm	886	890	1,163	968
	inch	34.88	35.04	45.79	38.11
Cutter Length	mm	180	180	200	200
	inch	7.09	7.09	7.87	7.87
Crushing Force	A ton	57	51	93	91
	B ton	85	61	135	140
	C ton	—	87	—	110
	D ton	—	95	—	171
Cutting Force	ton	183	183	317	317
Operating Pressure	kgf/cm ²	300	300	320	320
	psi	4,226	4,226	4,550	4,550
Oil Flow Rate	LPM	200~250	200~250	250~300	250~300
	GPM	52.8~66.1	52.8~66.1	66.1~79.2	66.1~79.2
Suitable Excavator	ton	18~26	18~26	26~32	26~32
Speed-Up Valve	N/A	Option	Option	Option	Option
Motor Setting Pressure	kgf/cm ²	160	160	160	160
	psi	2,275	2,275	2,275	2,275
Motor Oil Flow Rate	LPM	36~40	36~40	36~40	36~40
	GPM	9.5~10.5	9.5~10.5	9.5~10.5	9.5~10.5
Revolving Speed	RPM	13~15	13~15	13~15	13~15

Above specifications are subject to change without prior notice for quality improvement.

Specification

Item / Model	Unit	TRIS1M	TRIS2M	TRIS3M	TRIS5M	
Weight	kgf	105	180	330	400	
	lb	231	397	728	882	
Overall Length	mm	890	1,110	1,305	1,410	
	inch	35	44	51	56	
Overall Width	mm	570	688	726	840	
	inch	22	27	29	33	
Cylinder	Bore dia.	mm	125	135	165	165
		inch	4.9	5.3	6.5	6.5
	Rod dia.	mm	90	100	120	120
		inch	3.5	3.9	4.7	4.7
	Stroke	mm	175	205	220	260
		inch	6.9	8.1	8.7	10.2
	Min length	mm	410	480	490	530
		inch	16.1	18.9	19.3	20.9
Max length	mm	585	685	710	790	
	inch	23	27	28	31.1	
Operating pressure	kgf/cm ²	210	210	210	210	
	psi	2,987	2,987	2,987	2,987	
Force at the cutter	kgf	58,100	61,900	83,600	99,400	
	lb	128,087	136,464	184,304	219,136	
Force at the 1st jaw tip	kgf	30,000	32,200	39,500	48,200	
	lb	66,138	70,988	87,081	106,261	
Force at the end of jaw tip	kgf	19,900	21,300	27,900	31,500	
	lb	43,871	46,958	61,508	69,445	
Opening width of jaw tip	mm	280	360	430	530	
	inch	11	14	17	21	
Suitable excavator	ton	0.8~2	1.5~3	2.5~5	4~6	
	lb	1,764~4,409	3,307~6,614	5,511~11,023	8,818~13,228	
Pin dia.	Cyl + jaw	mm	45	50	60	60
		inch	1.8	2.0	2.4	2.4
	Jaw + frame	mm	55	60	70	70
inch		2.2	2.4	2.8	2.8	
Jaw plate	Depth	mm	30	30	45	50
	Material	inch	1.2	1.2	1.8	2.0
Swivel joint	N/A	HARDOX 500				
Rotating angle	deg	Yes				
Synchronizing linkage	N/A	360° (free rotating)				
Power booster	N/A	Yes				
		No				

Above specifications are subject to change without prior notice for quality improvement.

Hydraulic Pulverizer :



CHARACTERISTICS

- Reinforcement of anti-twisted cutter and anti-break cutter body.
- Improvement of several problems from other pulverizer, such as powerful motor, light weight center jaw and reinforce cylinder.
- Cutter with convenience for tighten and loosen bolts and nuts to repair and replace easily.

● Specification

Item / Model	Unit	TRIS22PHR	TRIS30PHR
Weight	kgf	2,000	2,600
	lb	4,409	5,732
Overall Length	mm	2,386	2,627
	inch	93.94	103.43
Overall Width	mm	1,367	1,443
	inch	53.82	56.81
Max. Opening Width	mm	886	957
	inch	34.88	37.68
Cutter Length	mm	200	300
	inch	7.87	11.81
Crushing Force	A ton	53	73
	B ton	72	102
	C ton	97	134
	D ton	145	201
Cutting Force	ton	165	229
Operating Pressure	kgf/cm ²	300	320
	psi	4,226	4,550
Oil Flow Rate	LPM	200~250	250~300
	GPM	52.8~66.1	66.1~79.2
Suitable Excavator	ton	18~26	26~32
Speed-Up Valve	N/A	Option	Option
Motor Setting Pressure	kgf/cm ²	160	160
	psi	2,275	2,275
Motor Oil Flow Rate	LPM	36~40	36~40
	GPM	9.5~10.5	9.5~10.5
Revolving Speed	RPM	13~15	13~15

Above specifications are subject to change without prior notice for quality improvement.

Fixed type Pulverizer :



CHARACTERISTICS

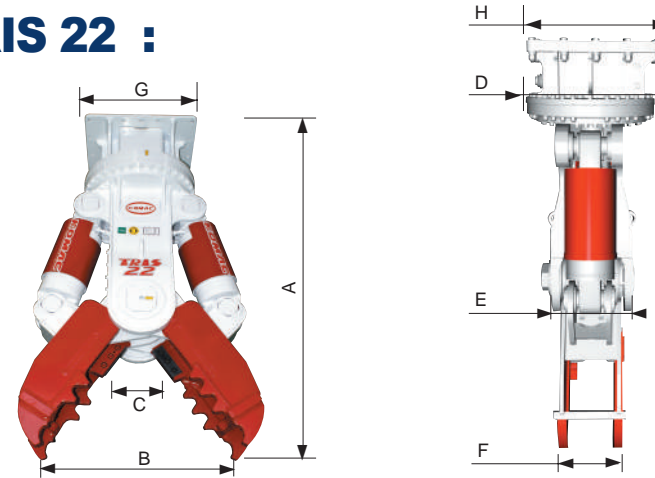
- Cutting steel structure and pieces based on the strong power with efficient performance.
- Equipped the strongest level of cylinder to perform efficiency.
- Highest stability and durability in this model with light weight.

● Specification

Item / Model	Unit	TRIS22P	TRIS30P
Weight	kgf	1,800	2,350
	lb	3,970	5,180
Overall Length	mm	1,836	1,981
	inch	72.28	77.99
Overall Width	mm	1,430	1,541
	inch	56.29	60.67
Arm Width	mm	320	380
	inch	12.59	14.96
Max. Opening Width	mm	850	920
	inch	33.46	36.22
Cutter Length	mm	200	300
	inch	7.87	11.81
Crushing Force	A ton	108	123
	B ton	150	171
	C ton	178	199
	D ton	220	239
Cutting Force	ton	270	286
Operating Pressure	kgf/cm ²	300	320
	psi	4,226	4,550
Oil Flow Rate	LPM	130~220	250~300
	GPM	34.3~58	66.1~79.2
Suitable Excavator	ton	18~26	26~32
Speed-Up Valve	N/A	Option	Option

Above specifications are subject to change without prior notice for quality improvement.

TRIS 22 :



CHARACTERISTICS

- Dual cylinders - Equipped with dual cylinders which provide jaw exchange.
- Single main-pin - Easy and simple to detach and storage.
- Multi-use (3 Jaws for 1 body) - Multi shapes of the jaws in one body.
- Enhanced durability - Declining tool breakdown and wearing with welded tool, benefit from fine steel.
- Superior design - Single pin offers narrow grab width, enabling multi-purpose.
- Handy maintenance - Designed for convenient maintenance by detaching jaw, which allows easy to enter.
- Enhanced durability.
- Lower noise.

Model	Unit	A	B	C	D	E	F	G	H
TRIS 22	mm	2,680	860	295	720	456	400	700	680
	inch	105.51	33.86	11.61	28.35	17.95	15.75	27.56	26.77

Above specifications are subject to change without prior notice for quality improvement.

Demolition :



CHARACTERISTICS

- Cutting steel structure and pieces based on the strong power with efficient performance.
- Equipped the strongest level of cylinder to perform efficiency.
- Highest stability and durability with light weight.

● Specification

Item / Model	Unit	TRIS22DHR	TRIS30DHR
Weight	kbf	2,000	2,450
	lb	4,409	5,401
Overall Length	mm	2,136	2,529
	inch	84.09	99.57
Overall Width	mm	1,106	1,213
	inch	43.54	47.56
Max, Opening Width	mm	645	731
	inch	25.39	28.78
Cutter Length	mm	400	500
	inch	15.74	19.69
Crushing Force & Cutting Force	A ton	61	82
	B ton	172	134
	C ton	256	229
Operating Pressure	kgf/cm ²	300	320
	psi	4,226	4,550
Oil Flow Rate	LPM	200~250	250~300
	GPM	52.8~66.1	66.1~79.2
Suitable Excavator	ton	18~26	26~32
Speed-Up Valve	N/A	Option	Option
Motor Setting Pressure	kgf/cm ²	160	160
	psi	2,275	2,275
Motor Oil Flow Rate	LPM	36~40	36~40
	GPM	9.5~10.5	9.5~10.5
Revolving Speed	RPM	13~15	13~15

Above specifications are subject to change without prior notice for quality improvement.

Shear :



CHARACTERISTICS

- Auto hydraulic free rotation device, high quality dual cylinder, specialized in demolition for steel frame construction (H beam, rolled steel column)
- Multiple usage from changing jaws.
- The Shear specialized in cutting metal with highest stability and durability with light weight.

● Specification

Item / Model	Unit	TRIS22SHR	TRIS30SHR	TRIS22SHR-II	TRIS30SHR-II	
Weight	kgf	2,000	2,450	1,760	2,800	
	lb	4,409	5,401	3,880	6,173	
Overall Length	mm	1,995	2,386	2,072	2,434	
	inch	78.54	99.94	81.57	95.83	
Overall Width	mm	1,071	1,214	1,294	1,585	
	inch	42.17	47.79	50.94	62.40	
Max. Opening Width	mm	507	580	522	603	
	inch	19.96	22.83	20.55	23.74	
Cutter Length	mm	500	600	120 x 4ea	120 x 5ea	
	inch	19.69	23.62	4.72 x 4ea	4.72 x 5ea	
Cutting Force	A	ton	172	256	73	129
	B	ton	172	256	94	157
	C	ton	172	256	127	197
	D	ton	172	256	200	259
	E	ton	172	256	385	385
Operating pressure	kgf/cm ²	300	320	300	320	
	psi	4,226	4,550	4,226	4,550	
Oil Flow Rate	LPM	200~250	250~300	200~250	250~300	
	GPM	52.8~66.1	66.1~79.2	52.8~66.1	66.1~79.2	
Suitable Excavator	ton	18~26	26~32	18~26	26~32	
Speed-Up Valve	N/A	Option	Option	Option	Option	
Motor Setting Pressure	kgf/cm ²	160	160	160	160	
	psi	2,275	2,275	2,275	2,275	
Motor Oil Flow Rate	LPM	36~40	36~40	36~40	36~40	
	GPM	9.5~10.5	9.5~10.5	9.5~10.5	9.5~10.5	
Revolving Speed	RPM	13~15	13~15	13~15	13~15	

Above specifications are subject to change without prior notice for quality improvement.

Mini Shear :



CHARACTERISTICS

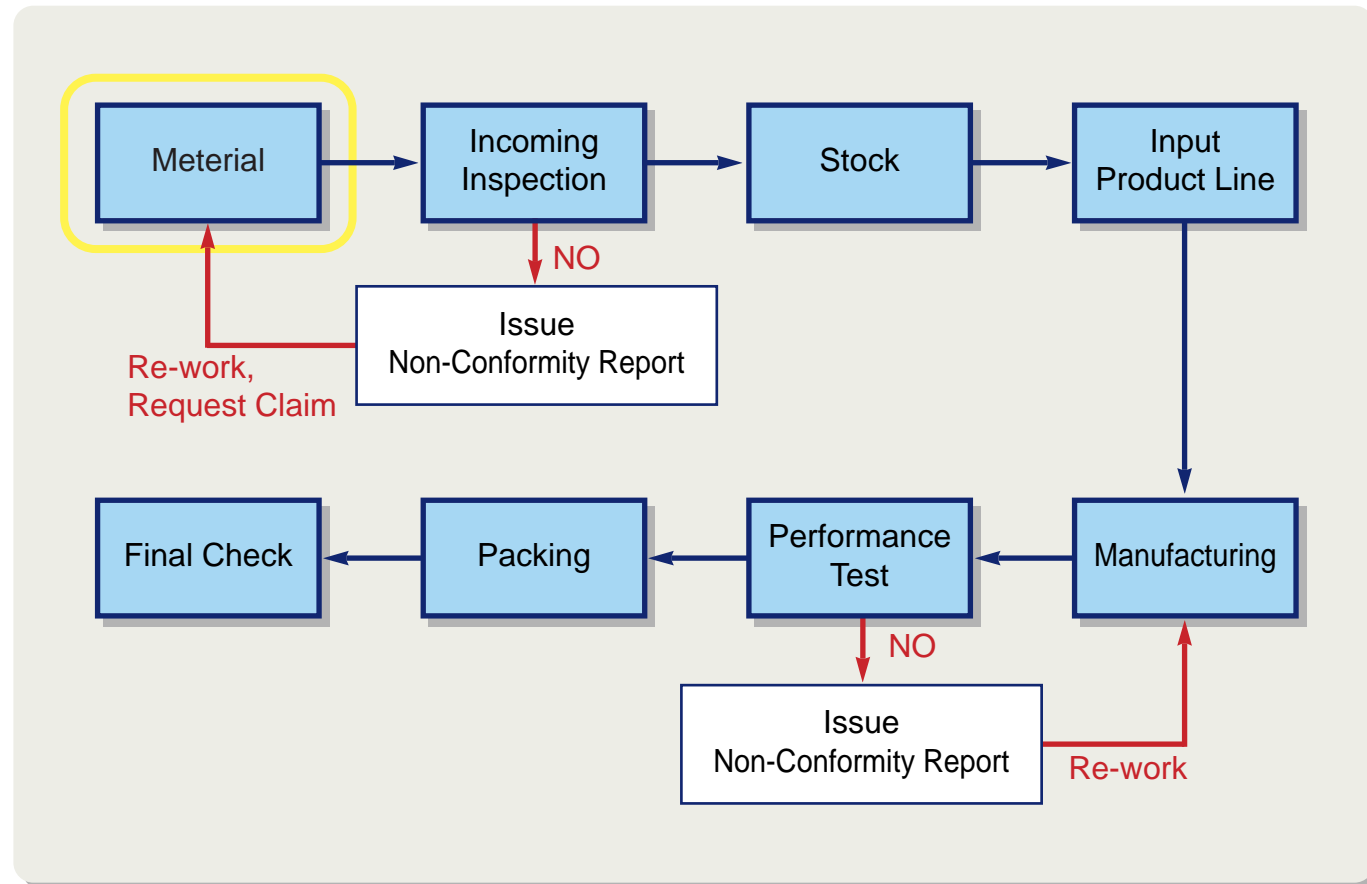
- **High strength materials of jaws:**
 - Arms of Shear are made with the HARDOX 500 (made by SSAB), which are one of the world's hardest wear plate, for the durability and abrasion resistance of Mini Shear.
- **Pin with large diameter:**
 - Pins with large diameter provide well stress distribution.
 - Pins made with high toughness materials, its surfaces are coated with chrome for abrasion resistance.
- **High quality cylinder:**
 - Cylinder is designed for 350bar, and assembled by high quality seals for durability, its surfaces are coated with chrome for abrasion resistance.

● Specification

Item / Model	Unit	TRIS2S	TRIS3S	TRIS5S	TRIS5SHR
Weight	kgf	190	260	430	500
	lb	419	573	948	1,102
Overall Length	mm	1,085	1,186	1,412	1,456
	inch	43	47	56	57
Overall Width	mm	478	576	665	665
	inch	19	23	26	26
Operating pressure	kgf/cm ²	210	210	210	210
	psi	2,987	2,987	2,987	2,987
Max Force	ton	65	111	152	152
	US ton	72	122	167	167
Opening width of jaw tip	mm	200	231	288	288
	inch	8	9	11	11
Suitable excavator	ton	1.2 ~ 3.8	2 ~ 5.7	4 ~ 8	4 ~ 8
	US ton	1.3 ~ 4.2	2.2 ~ 6.3	4.4 ~ 8.8	4.4 ~ 8.8
Jaw plate Thickness Material	mm	40	40	50	50
	inch	1.6	1.6	2.0	2.0
Swivel joint	HARDOX 500				
	Yes				
Rotating angle	360° (free rotating)				360° (Hydraulic rotating)
Power booster	No				

Above specifications are subject to change without prior notice for quality improvement.

Quality Control Inspection Flow



Quality Assurance System

- ⊗ Customer Oriented Policy
- ⊗ Fast Action plan for any complaints
- ⊗ Part Supply by JIT System
- ⊗ Service Training scheduled at Headquarters yearly
- ⊗ Regular Technical Training by visiting dealers

KOMAC Mission Statement

KOMAC, as a leading manufacturer of hydraulic breakers, has led the way in attachment industries.

KOMAC's hydraulic breakers had been ensuring and exceeding customers' expectations in the field as well as through various construction equipment trade shows.

KOMAC's mission is to be recognized as a world leader in manufacturing hydraulic breakers.

KOMAC commits to focus in continual improvement in business performance, productivity, quality and most importantly in dedication to customers.