



**MANITRANSIT**  
*Industrie*



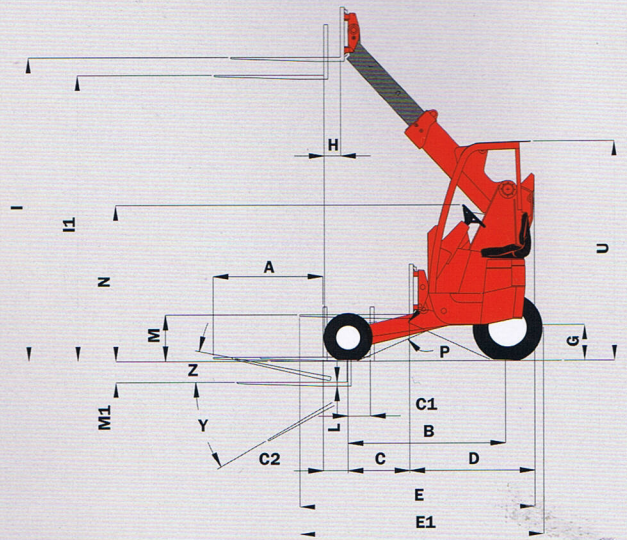
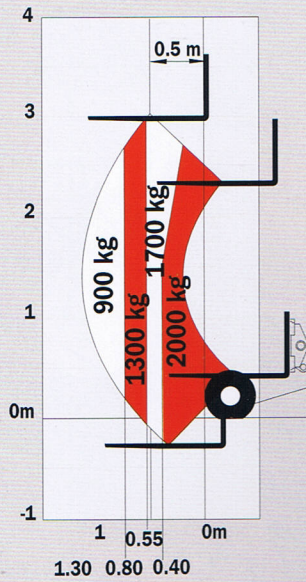
**MANITOU**



# MANITRANSIT

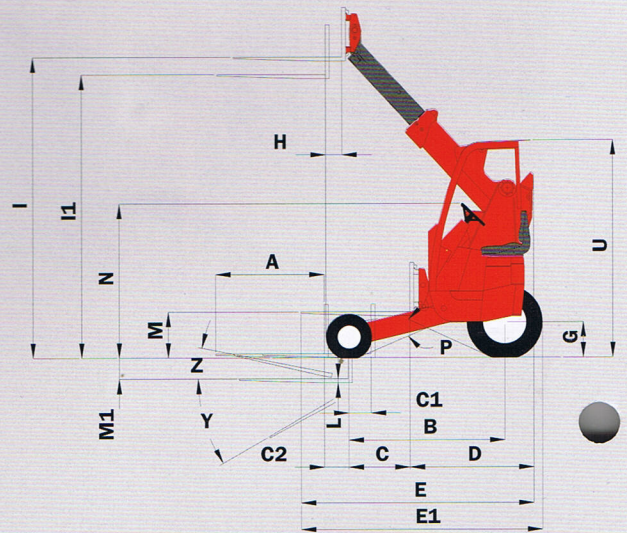
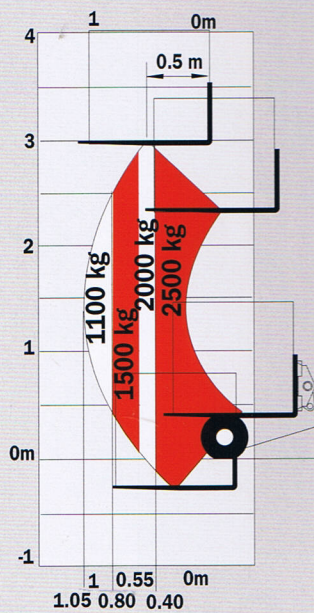
## TMT 317 SI

LSpA : 500 mm  
 Tech. Hubhöhe : 2,85 m



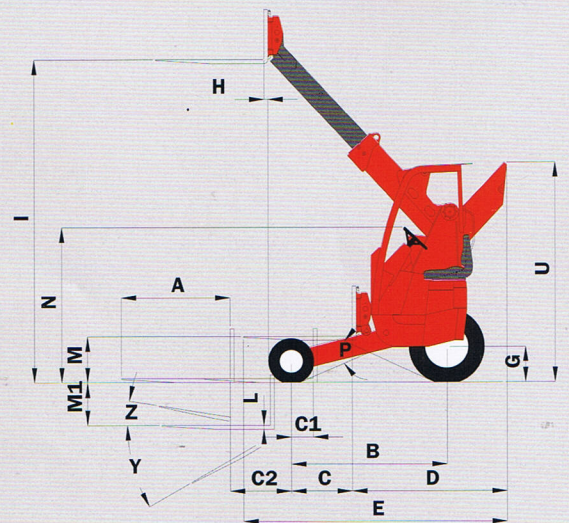
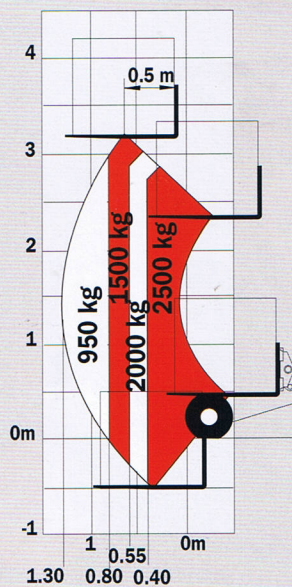
## TMT 320 SI

LSpA : 500 mm  
 Tech. Hubhöhe : 2,85 m



## TMT 315 SI FL

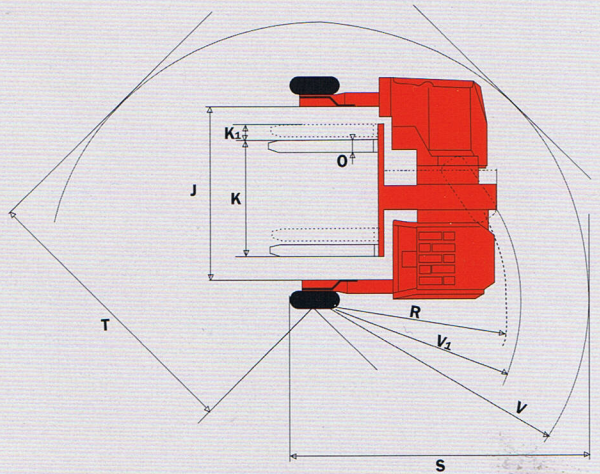
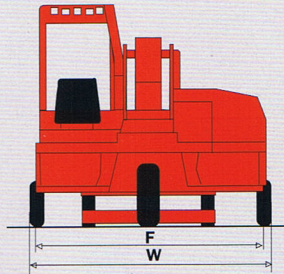
LSpA : 500 mm  
 Tech. Hubhöhe : 3,25 m





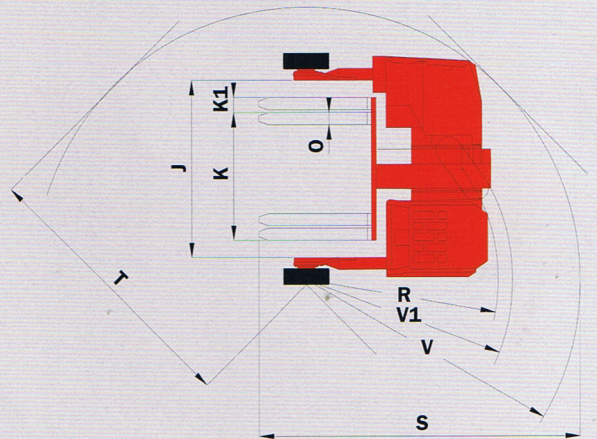
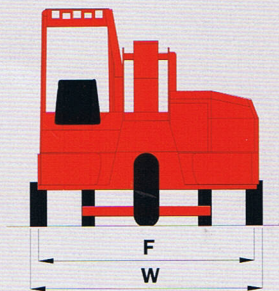
## ABMESSUNGEN TMT 317 SI

TMT 317 SI			
A	1100	L	36
B	1525	M	432
C	566	M1	213
C1	172	N	1570
C2	297	O	125
D	1251	P	51°
E	2351	R	1850
E1	2439	S	3164
F	2096	T	2765
G	359	U	2209
H	170	V	2674
I	3048	V1	1980
I1	2866	W	2360
J	1561	Y	100°
K	1070	Z	7°
K1	150		



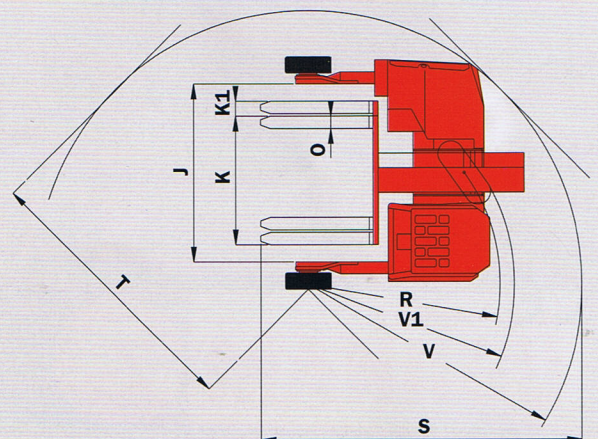
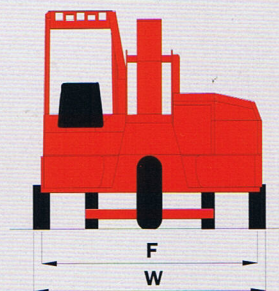
## ABMESSUNGEN TMT 320 SI

TMT 320 SI			
A	1100	L	40
B	1579	M	466
C	617	M1	209
C1	225	N	1570
C2	247	O	125
D	1254	P	48°
E	2354	R	1939
E1	2442	S	3251
F	2186	T	2803
G	360	U	2200
H	165	V	2768
I	3052	V1	2083
I1	2875	W	2350
J	1800	Y	98°
K	1300	Z	9°
K1	150		











## ABMESSUNGEN TMT 315 SI FL

TMT 315 SI FL			
A	1100	L	40
B	1579	M	466
C	616	M1	429
C1	222	N	1570
C2	620	O	125
D	1567	P	48°
E	2667	R	1939
F	2186	S	3251
G	360	T	2803
H	39	U	2224
I	3272	V	2768
I1	-	V1	2083
J	1800	W	2350
K	1300	Y	98°
K1	150	Z	9°

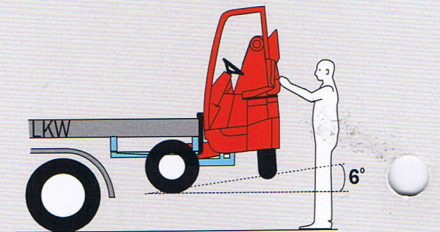
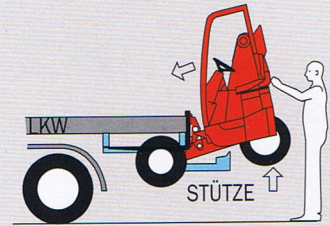
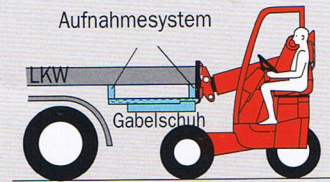




# ERSTER MITNAHMETELESKOP (MANITOU PATENT)

	TMT 317 SI	TMT 320 SI	TMT 315 SI FL
 <b>Tragkraft</b> mit Lastschwerpunkt bei 500 mm 500 mm LSpA	1700 kg	2000 kg	1500 kg
 <b>Max. Hubhöhe :</b> Hubhöhe vor den Rädern Max. Reichweite horizontal (Radarme unter dem Fahrzeug)	3,00 m 2,85 m 2,00 m	3,00 m 2,85 m 2,00 m	3,25 m 3,25 m 2,30 m
 <b>Bereifung</b> Vorne : Hinter : Anzahl der angetriebenen Räder :	18 x7-8 27 x 10 - 12 3	18 x7-8 10 x 16,5 8 PR 3	18 x7-8 10 x 16,5 8 PR 3
 <b>Motor</b> Hubraum Leistung (DIN 6270 B)	KUBOTA 3 Zyl . 1123 cm <sup>3</sup> 23,9 PS/18,4 kw	LISTER PETTER LPWS 4 4 Zyl - 1860 cm <sup>3</sup> 38.8 PS / 28.6 kw	
 <b>Hydrostatischer Antrieb</b> Fahrrichtungsschalter Differentialsperre Maxi. Fahrgeschwindigkeit Option	6 km/h 10 km/h	mit Fußschalter 6 km/h 12,5 km/h	6 km/h 12,5 km/h
 <b>Hydraulik</b> Zahnradpumpe	33 l./mn	120 l./mn	36 l./mn - 250 bar
 <b>Behälter/Inhalt</b> Kraftstoff Hydrauliköl		40 L 35 L	
 <b>Eigengewicht (mit Gabeln)</b> <b>Breite</b> <b>Bauhöhe</b> <b>Wenderadius (Aussenkante Räder)</b> <b>Länge</b> <b>Bodenfreiheit</b> <b>Arbeitsgangbreite (90°)</b>	1915 kg 2,36 m 2,20 m 2,67 m 2,44 m 0,36 m 3,16 m	2180 kg 2,35 m 2,20 m 2,76 m 2,44 m 0,36 m 3,25 m	2260 kg 2,35 m 2,22 m 2,76 m 2,66 m 0,36 m 3,25 m

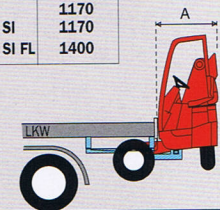
## SCHNELLAUFNAHME- SYSTEM



## ÜBERSTAND AM HECK

	A
TMT 317	1170
TMT 320 SI	1170
TMT 315 SI FL	1400

mm



## PATENTE

FR 94 10953  
FR 95 00033  
EP 0 701 963  
US 5813821

AUSTRALIA ANGEMELDET  
SOUTH AFRICA 96/5/80

## PATENT : INTEGRIERTER SEITENSCHUB



TMT 317 SI/TMT 320 SI/TMT 315 SI FL

Änderungen im Sinne des technischen Fortschritts vorbehalten.  
Die in der vorliegenden Broschüre vorgestellten MANITOU-Maschinen können mit Zusatzgeräten ausgestattet sein.



Deutschland und Österreich :  
MANITOU DEUTSCHLAND GmbH  
61239 OBER MÖRLEN ☎ 06002 - 9199 - 0

Andere Länder :  
MANITOU BF S.A.  
44158 ANCENIS cedex - FRANKREICH ☎ 33 2 40 09 10 11  
www.manitou.fr