

**safe and reliable**  
**compact en high manoeuvrability**  
**optimal stability**  
**cage load 300 kg**  
**fast and efficient**  
**operating without outriggers is possible**  
**proportional control**  
**combination of small/wide outrigger-position is possible**



**Custers® truck mounted Taurus 300-22 is an articulated platform with three telescopic booms and jib.**

**The Taurus 300-22 has following features:**

- suitable for different kinds of chassis
- working height 22 m
- maximal horizontal outreach with 300 kg cageload
- short wheel-base
- stable steel construction
- optimal load-space through coachwork
- vulnerable components are mounted inside booms - maintenance-friendly construction
- fully proportional control
- 1000 V insulation



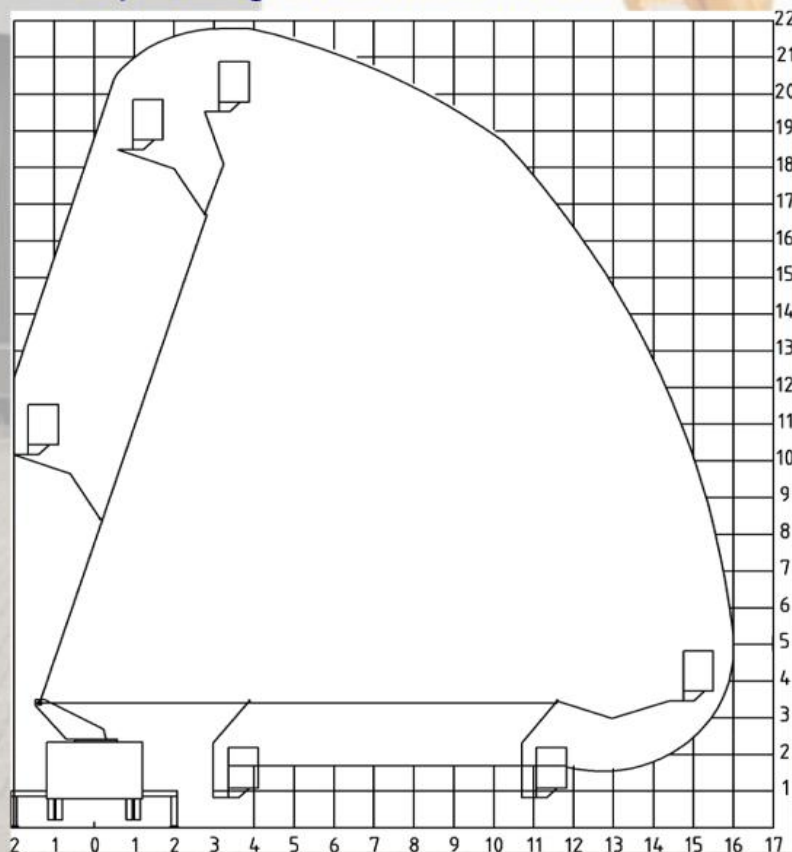
## STANDARD FEATURES

- o Synthetic cage
- o Subframe is covered with anti-slip aluminium sheet material
- o Lowered step covered with aluminium sheet material underneath the cage
- o Drive away-signalisation
- o Simultaneous movements
- o 1000 Volt insulation
- o Buzzer in cabin
- o Emergency control
- o Painted in one colour
- o According CE

## TECHNICAL DATA

Max. working height	22 m
Max. platform height	20 m
Max. outreach	up to 16 m*
Max. cage capacity	300 kg
Rotation lower boom	$\pm 70^\circ$
Rotation jib	$\pm 160^\circ$
Rotation	$360^\circ$
Cage dimensions l x w x h	1.40 x 0.96 x 1.20 m
Transport height	3.65m*
Total weight	11 tonne*
Wheel-base	min 3.80m*
Total length	min 7,40m*

\* = depending on chassis-model



## OPTIONALS

- o Intercom
- o Second control-panel
- o Cage interchange system
- o Tailor-made coachwork
- o Converter
- o Tow bar
- o Other individual wishes



[www.custers.nl](http://www.custers.nl)



Custers Hydraulica B.V.  
Smakterweg 33 / postbus 22  
5804 AE / 5800 AA Venray - NL.  
tel.: 0478 553000  
fax: 0478 553010  
e-mail: [custers@custers.nl](mailto:custers@custers.nl)  
web-site : [www.custers.nl](http://www.custers.nl)