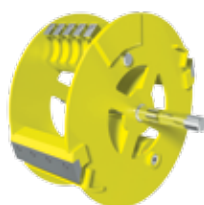


# SUPER PREMIUM 30 ER



**PATENTED MIXED ROTOR™**  
Equipped with 10 greased hammers with inserts + 2 blades.



**KOHLER 30 HP  
TWIN-CYLINDER PETROL  
ENGINE**



**PILOT SYSTEM**  
Centralisation of the piloting and control of the machine (see pg 9)



**VERTICALLY GUIDED**  
feed roller



**270° CHIMNEY**  
Fitted with a simple and effective rotation system.

## TECHNICAL CHARACTERISTICS

Product Code	1425440
Engine	KOHLER CH 750 - 30 hp / 22,06 kW
Engine swept volume cm <sup>3</sup>	747 / 2-cyl.
Fuel	Petrol
Cowling	ABS safety hoods
Admissible Diameter	15 cm
Output	22 m <sup>3</sup> /h
Rotor Diameter	560 mm
Rotor Weight	80 kg
Hammers	10
Knives	2
Large feed roller	Yes
Feed roll width	250 mm
Feed Conveyor	250 mm
Feed roll diameter	340 mm
Allowable Road weight axles	1800 kg
No. Of axles	1
Tyre dimensions	145 x 13
Tank capacity	30 L
Consumption	5 L/h
Multidirectional chimney	270°

Chimney outlet height	2 100 mm
Machine weight	1 060 kg
PTAC trailer approval	1 300 kg
Hopper dimensions (L x W)	1 600 x 1400 mm
Hopper Loading height	700 mm
L x W x H	4 100 x 1 650 x 2 300
Guaranteed acoustical power level rating	126 dBA

## OPTIONS

Option CO2 Reduction	-
Insert ref.	RHEV/0010 (10)
Knife ref.	RHEMVV/0010 (2)
Spare wheel ref + Spare wheel support ref.	1425925
Wheel chock ref. (2)	ECPIR/0010
Stabilizer legs ref.	ECIMV/0325

Machine directive: 2006/42/CE. Harmonized standards used: EN 13525. **Specify your hitch type at the time of your order.**



**TS Industrie GmbH**  
Weserstrasse 2  
47506 NEUKIRCHEN-VLUYN  
DEUTSCHLAND  
Telefon : +49(0)2845 9292-0  
Telefax : +49(0)2845 9292-28  
kontakt@ts-industrie.eu

**TS INDUSTRIE FRANCE**  
3 rue Jules Verne - L'Orée du Golf  
BP 17 - 59790 RONCHIN  
FRANCE  
Tél : +33 (0)3 20 43 87 87  
Fax : +33 (0)3 20 34 12 73  
contact-industrie@saelen.fr

**ERIC HUNTER Ltd**  
Prince Albert House 20 King Street;  
Maidenhead,  
Berkshire SL6 1DT - UK  
Phone: +44(0)1628 778 644  
Fax: +44(0)1628 778 633  
contactuk@eric-hunter.com

[www.ts-industrie.eu](http://www.ts-industrie.eu)