



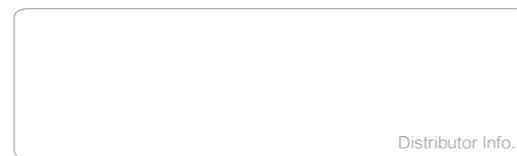
## SANY ROLLERS



### SANY HEAVY INDUSTRY CO., LTD.

SANY Industry Town, Changsha Economic and Technological  
Development Zone, Hunan Province, China  
Service Line: +86 4006 098 318  
E-mail: [crd@sany.com.cn](mailto:crd@sany.com.cn)

[www.sanygroup.com](http://www.sanygroup.com)



Due to our process of continuous innovation, materials and specifications are subject to change without notice.

© Printed in China File No.: 59010962 Date: Apr. 2019



# SANY ROAD MACHINERY

SANY Heavy Industry Co., Ltd. is one of the largest complete equipment suppliers of road machinery. The products cover pavers, rollers, asphalt batching plants, graders, and milling machines etc.

Taking "Quality changes the world" as the mission and "Creating the greatest values for customers" as the duty, Hunan SANY Road Machinery Co., Ltd., has set up SANY (USA) Road Machinery Institute and SANY (Germany) Road Machinery Institute and integrated the most cutting-edge technologies into its products, of which: heavy graders designed by the United States and double drum vibratory rollers designed by Germany are high-quality products of internationally top level; the pavers and asphalt batching plants, having been best sellers in China for 5 consecutive years, are No.1 brand in China and sold well in over 60 countries across the world.

Faced with the construction of expressways, roads in airports and urban high-class roads and with the global market, we provide road construction complete equipment and series of solutions. We have created an unmatched service system to eliminate the customers' worries. In the service satisfaction surveys performed by China Association for Quality, SANY has ranked No.1 for 3 consecutive years and won high trust from the customers. Keeping "Construct roads in China, Connect with the world freely" in mind, SANY Road Machinery Co., Ltd. will spare no effort in serving the global economic development and road construction.





# Contents



P03	SANY SSR SERIES SINGLE DRUM ROLLERS
P09	SANY STR SERIES TANDEM DRUM ROLLERS
P13	SANY SPR SERIES PNEUMATIC ROLLERS
P17	LEAN MANUFACTURING
P19	TEST SYSTEM
P21	CASES





# SANY SSR SERIES SINGLE DRUM ROLLER

## HIGH EFFICIENCY

- ◆ 10% greater excitation force than other products in the same category resulting in 16.7% greater production.

## EXTENDED LIFE TIME

- ◆ The use of water wheel type lubrication on the vibratory bearing extends the bearing life up to 5,000 hours.
- ◆ The engine air filter is raised and the air is filtered twice to protect the engine.
- ◆ The hydraulic system contains three stage filtration.

## OPERATOR COMFORT

- ◆ Cab mounted on vibration damping mounts
- ◆ Cab climate control
- ◆ Operator control forces have been reduced

## SAFETY FEATURES

- ◆ Rounded bumpers front and rear
- ◆ Large rear glass and sloped hood for greater visibility



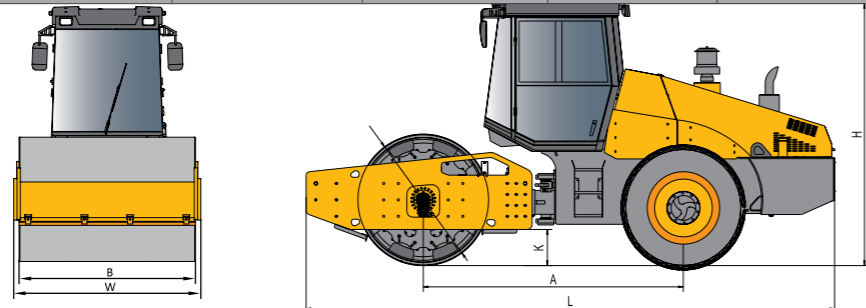


# TECHNICAL SPECIFICATIONS

## SSR Series Single Drum Roller Technical Specifications

Sales Model		SSR80C-10	SSR100C-10	SSR100C-10	SSR100AC-8	SSR120AC-8	SSR120C-10	SSR120C-10
Weight and Load	Operating Weight	8000 kg	10000 kg	10000 kg	10000 kg	12000 kg	12000 kg	12000 kg
	Weight at Drum	4400 kg	5700 kg	5700 kg	5000 kg	6000 kg	7000 kg	7000 kg
	Weight at Rear axle	3600 kg	4300kg	4300kg	5000kg	6000 kg	5000 kg	5000 kg
	Drum Static Linear Load	262 N/cm	329 N/cm	268 N/cm	268 N/cm	282 N/cm	329 N/cm	329 N/cm
	Drum Edge Thickness	22 mm	25 mm	25 mm	25 mm	25 mm	25 mm	25 mm
Compaction Mechanism	Vibration Frequency	32 / 36Hz	30 / 30Hz	30 / 30Hz	30 / 30Hz	32 / 36Hz	32 / 36Hz	32 / 36Hz
	Nominal Amplitude	1.6 / 1.2mm	2.0 / 1.0mm	2.0 / 1.0mm	2.0 / 1.0mm	1.8 / 0.9mm	1.8 / 0.9mm	1.8 / 0.9mm
	Excitation Force	140 / 126kN	246 / 124kN	246 / 124kN	246 / 124kN	280 / 178kN	280 / 178kN	280 / 178kN
	Drum Diameter	1234 mm	1500 mm	1500 mm	1500 mm	1500 mm	1500 mm	1500 mm
	Drum Width	1680 mm	2130 mm	2130 mm	2130 mm	2130 mm	2130 mm	2130 mm
	Drum Edge Thickness	22 mm	25 mm	25 mm	25 mm	25 mm	25 mm	25 mm
	Drum Edge Thickness	22 mm	25 mm	25 mm	25 mm	25 mm	25 mm	25 mm
Maneuver Ability	Travel Speed	0 - 8.5/ 0-12.5km/h	0~8.5/ 0~12.5km/h	0~8.5/ 0~12.5km/h	0~9km/h	0~9km/h	0~8.5/ 0~12.5km/h	0~8.5/ 0~12.5km/h
	Working Speed	0 - 6.0/0-7.5km/h	0~6.0/0~7.5km/h	0~6.0/0~7.5km/h	0~5.5km/h	0~5.5km/h	0~6.0/0~7.5km/h	0~6.0/0~7.5km/h
	Theoretical Gradeability Vibratory	50%	50%	50%	40%	40%	50%	50%
	Theoretical Gradeability Non-Vibratory	55%	53%	53%	/	/	53%	53%
	Ground Clearance	357 mm	480 mm	480 mm	480 mm	480 mm	480 mm	480 mm
	Wheelbase	2743 mm	2868 mm	2868 mm	2868 mm	2868 mm	2868 mm	2868 mm
	Steering Angle	± 35°	±35°	±35°	±35°	±35°	± 35°	± 35°
	Swing Angle	± 12°	±12°	±12°	±12°	±12°	± 12°	± 12°
	Min. Turning Outside Diameter	11000 mm	11600 mm	11600 mm	11600 mm	11600 mm	11600 mm	11600 mm
	Tires	14.9-24-8PR	23.1-26-8PR	23.1-26-8PR	20.5-25-16PR	20.5-25-16PR	23.1-26-8PR	23.1-26-8PR
	Brand	CUMMINS	CUMMINS	Dongfeng Cmmins	Dongfeng Cmmins	Dongfeng Cmmins	Dongfeng Cmmins	CUMMINS
	Model	QSB3.9-C125	QSB3.9-C125	4BTAA3.9-C125	4BTAA3.9-C125	4BTAA3.9-C125	4BTAA3.9-C125	4BTAA3.9-C125
	Emission	NR3	NR3	/	/	/	/	NR3
Rated Power	93 kW	93 kW	93 kW	93 kW	93kW	93 kW	93 kW	
Cylinder numbers	4	4	4	4	4	4	4	
Displacement	3.9L	3.9L	3.9L	3.9L	3.9L	3.9L	3.9L	
Capacity	Battery	24V × 120Ah	24 × 120Ah	24 × 120Ah	24 × 120Ah	24 × 120Ah	24V × 120Ah	24V × 120Ah
	Fuel Tank	200 L	250 L	250 L	250 L	250 L	250 L	250 L
	Hydraulic Oil Tank	80 L	100 L	70 L	70 L	70 L	70 L	100 L

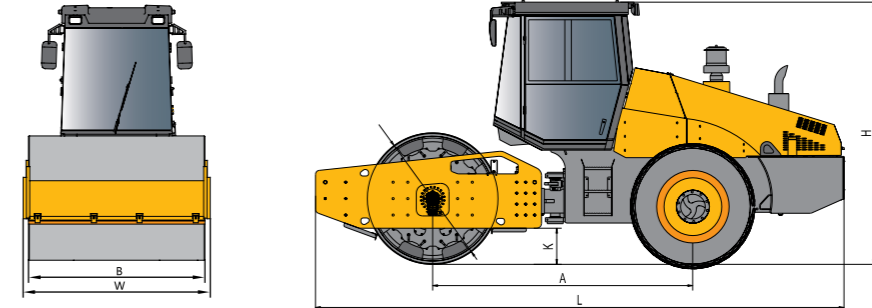
Size Code	SSR80C-10	SSR100C-10	SSR100C-10	SSR100AC-8/ SSR120AC-8	SSR120C-10	SSR120C-10
A(mm)	2743	2868	2868	2868	2868	2868
W(mm)	1828	2285	2285	2285	2285	2285
L(mm)	5467	5775	5775	5775	5775	5775
D(mm)	1234	1500	1500	1500	1500	1500
H(mm)	3064	3225	3225	3225	3225	3225
B(mm)	1680	2130	2130	2130	2130	2130
K(mm)	357	480	480	480	480	480



## SSR Series Single Drum Roller Technical Specifications

Sales Model		SSR120C-8	SSR150C-8	SSR180C-8	SSR180C-8H	SSR200C-8H	SSR200AC-8H
Weight and Load	Operating Weight	12000 kg	15000 kg	18000 kg	18000 kg	20000 kg	20000 kg
	Weight at Drum	7000 kg	9600 kg	12400 kg	12400 kg	13600 kg	10000 kg
	Weight at Rear axle	5000 kg	5400 kg	5600 kg	5600 kg	6400 kg	10000 kg
	Drum Static Linear Load	329 N/cm	442 N/cm	582 N/cm	582 N/cm	638 N/cm	470 N/cm
Compaction Mechanism	Vibration Frequency	32 / 36Hz	32 / 36Hz	29 / 35Hz	29 / 35Hz	29 / 35Hz	29 / 35Hz
	Nominal Amplitude	1.8 / 0.9mm	1.8 / 0.9mm	2.0 / 1.0mm	2.0 / 1.0mm	2.0 / 1.0 mm	1.9 / 0.95 mm
	Excitation Force	280 / 178kN	300 / 210kN	380 / 275kN	380 / 275kN	380 / 275kN	368 / 258kN
	Drum Diameter	1500 mm	1500 mm	1600 mm	1600 mm	1600 mm	1600 mm
	Drum Width	2130 mm	2130 mm	2130 mm	2130 mm	2130 mm	2130 mm
	Drum Edge Thickness	25 mm	25 mm	40 mm	40 mm	40 mm	40 mm
	Drum Edge Thickness	25 mm	25 mm	40 mm	40 mm	40 mm	40 mm
Maneuver Ability	Travel Speed	0~8.2/0~10.1km/h	0~7.5/0~10.5km/h	0~6/0~8km/h	0~5.5/0~7.5km/h	0~5.5/0~7.5km/h	0~8km/h
	Working Speed	0~6.2/0~7.3km/h	0~5/0~6km/h	0~4/0~5.5km/h	0~3.5/0~4.5km/h	0~3.5/0~4.5km/h	0~5km/h
	Theoretical Gradeability	51%	45%	45%	45%	45%	30%
	Theoretical Gradeability Non-Vibratory	55%	/	/	/	/	/
	Ground Clearance	480 mm	410 mm	410 mm	410 mm	410 mm	440 mm
	Wheelbase	2950 mm	3143 mm	3182 mm	3182 mm	3185 mm	3185 mm
	Steering Angle	±35°	± 35°	± 35°	± 35°	± 35°	± 35°
	Swing Angle	±12°	± 12°	± 12°	± 12°	± 12°	± 12°
	Min. Turning Outside Diameter	11600 mm	12010 mm	12350 mm	12350 mm	12350 mm	12350 mm
	Tires	23.1-26-8PR	23.1--26	23.1--26	23.1--26-8	23.1-26-8	20.5-25-16PR
	Engine	Brand	Cummins	CUMMINS	CUMMINS	WEICHAI	WEICHAI
Model		QSB4.5	QSB4.5	QSB5.9	WP6G200E331	WP6G200E331	WP6G200E331
Emission		Tire4 Final	/	/	China III	China III	China III
Rated Power		119 kW	119 kW	133 kW	147 kW	147 kW	147 kW
Cylinder numbers		4	4	6	6	6	6
Displacement		4.5L	4.5L	5.9L	6.75L	6.75L	6.75L
Displacement		4.5L	4.5L	5.9L	6.75L	6.75L	6.75L
Capacity	Battery	24V × 120Ah	24V × 120Ah	24V × 120Ah	24V × 120Ah	24V × 120Ah	24V × 120Ah
	Fuel Tank	200 L	200 L	300 L	300 L	300 L	300 L
	Fuel Tank	200 L	200 L	300 L	300 L	300 L	300 L
	Hydraulic Oil Tank	120 L	120 L	150 L	150 L	150 L	100 L

Size Code	SSR120C-8	SSR150C-8	SSR180C-8	SSR180C-8H	SSR200C-8H	SSR200AC-8H
A(mm)	2950	3143	3182	3182	3185	3185
W(mm)	2240	2318	2318	2318	2318	2270
L(mm)	5750	6173	6497	6497	6497	6620
D(mm)	1500	1500	1600	1600	1600	1600
H(mm)	3190	3227	3300	3330	3330	3330
B(mm)	2130	2130	2130	2130	2130	2130
K(mm)	480	410	410	410	410	440

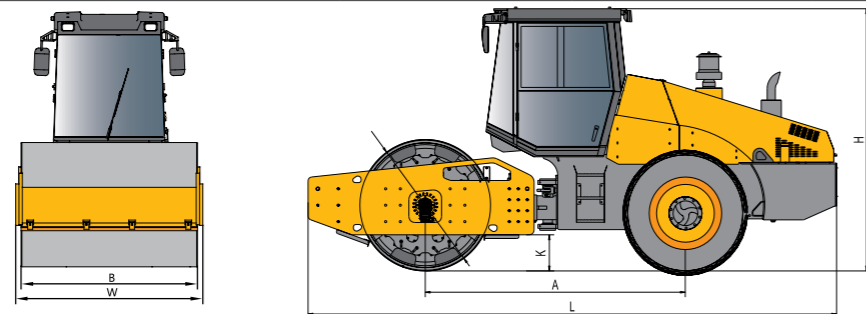




# SSR Series Single Drum Roller Technical Specifications

Sales Model		SSR220C-8H	SSR220AC-8H	SSR260AC-8H	SSR260C-8
Weight and Load	Operating Weight	22000 kg	22000 kg	26000 kg	26000 kg
	Weight at Drum	14600 kg	11000 kg	13000 kg	17000 kg
	Weight at Rear axle	7400 kg	11000 kg	13000 kg	9000 kg
	Drum Static Linear Load	678 N/cm	516 N/cm	610 N/cm	788 N/cm
Compaction Mechanism	Vibration Frequency	29 / 35Hz	29 / 35Hz	27 / 32Hz	28 / 32Hz
	Nominal Amplitude	2.0 / 1.0mm	1.9 / 0.95mm	1.9 / 0.95mm	2.05 / 1.03mm
	Excitation Force	410 / 300kN	390 / 258kN	416 / 295kN	420 / 310kN
	Drum Diameter	1600 mm	1600 mm	1700 mm	1700 mm
	Drum Width	2130 mm	2130 mm	2170 mm	2170 mm
	Drum Edge Thickness	40 mm	40 mm	40 mm	40 mm
Maneuver Ability	Travel Speed	0~5.5/0~7.5km/h	0~8km/h	0 - 10km/h	0~6.5/0~10.0km/h
	Working Speed	0~3.5/0~4.5km/h	0~5km/h	0 - 6km/h	0~4.0/0~6.0km/h
	Theoretical Gradeability Vibratory	45%	30%	30%	40%
	Theoretical Gradeability Non-Vibratory	/	/	/	50%
	Ground Clearance	410 mm	440 mm	440 mm	430 mm
	Wheelbase	3182 mm	3185 mm	3203 mm	3471 mm
	Steering Angle	± 35°	± 35°	± 35°	± 35°
	Swing Angle	± 12°	± 12°	± 12°	± 12°
	Min. Turning Outside Diameter	12350 mm	12350 mm	12672 mm	12800 mm
	Tires	23.1-26-8	20.5-25-16PR	23.5-25-16PR	23.5-25-16PR
Engine	Brand	WEICHAI	WEICHAI	WEICHAI	SANY
	Model	WP6G200E331	WP6G200E331	WP6G200E331	D07S3-245E0
	Emission	China III	China III	China III	China III
	Rated Power	147 kW	147 kW	147 kW	180 kW
	Cylinder numbers	6	6	6	6
	Displacement	6.75L	6.75L	6.75L	7.1L
Capacity	Battery	24V ×120Ah	24V ×120Ah	24V × 120Ah	24V × 120Ah
	Fuel Tank	300 L	300 L	300 L	300 L
	Hydraulic Oil Tank	150 L	100 L	100 L	150 L

Size Code	SSR220C-8H	SSR220AC-8H	SSR260AC-8H	SSR260C-8
A(mm)	3182	3185	3203	3471
W(mm)	2318	2270	2380	2490
L(mm)	6497	6620	6500	7060
D(mm)	1600	1600	1700	1700
H(mm)	3330	3330	3300	3330
B(mm)	2130	2130	2170	2170
K(mm)	410	440	440	430



## Single Drum Rollers SSR80C-10/100C-10/120C-10/120C-8/150C-8/180C-8/200C-8H/220C-8H/260C-8H Standard and Optional Configurations

Config.	Name of Systems	Description	Quantity	Details	Remarks
Standard Configuration	Main Machine	SSR80C-10/ SSR100C-10/ SSR120C-10/ SSR120C-8 / SSR150C-8/ SSR180C-8/ SSR200C-8H/ SSR220C-8H/ SSR260C-8H Single Drum Roller, Standard	1	1.Engine 2.Travel Pump 3.Vibration Pump 4.Travel Motor 5.Vibration Motor 6.Reduction Gears 7.Operating Platform 8.Vibratory Drum (Smooth)	9.Electrical System 10.Operating System 11.Front Frame 12.Rear Frame 13.Covering Part 14.Rear Axle Assembly 15.Center Articulated Frame 16.Cab+Air Con
				Shed	Shed
Optional Configuration	Vibratory Drum with Welded pad foot	Durm with Welded pad foot	1	Vibratory drum with welded pad foot, which cannot be removed, suitable for compaction of clay, semi-clay, rocks, gravels, expansive soil, and coal cinder base	Substitute smooth drums permissible
	Vibratory Drum with Assembled pad foot	Durm with Assembled pad foot	1	Vibratory drum with assembled pad foot, which can be removed to form a smooth drum; suitable for compaction of clay, semi-clay, rocks, gravels, expansive soil, and coal cinder base	Optional

## Single Drum Rollers SSR100AC-8/SSR120AC-8/200AC-8H/220AC-8H/260AC-8H Standard and Optional Configurations

Config.	Name of Systems	Description	Quantity	Details	Remarks
Standard Configuration	Main Machine	SSR100AC-8/ SSR120AC-8/ SSR200AC-8H/ SSR220AC-8H/ SSR260AC-8H Single Drum Roller, Standard	1	1.Engine 2.Travel Pump 3.Vibration Pump 4.Travel Motor 5.Vibration Motor 7.Operating Platform 7.Vibratory Drum (Smooth) 8.Electrical System	9.Operating System 10.Front Frame 11.Rear Frame 12.Covering Part 13.Rear Axle Assembly 14.Center Articulated Frame 15.Cab+Air Con
				Shed	Shed
Optional Configuration	Vibratory Drum with Welded pad foot	Durm with Welded pad foot	1	Vibratory drum with welded pad foot, which cannot be removed, suitable for compaction of clay, semi-clay, rocks, gravels, expansive soil, and coal cinder base	Substitute smooth drums permissible
	Vibratory Drum with Assembled pad foot	Durm with Assembled pad foot	1	Vibratory drum with assembled pad foot, which can be removed to form a smooth drum; suitable for compaction of clay, semi-clay, rocks, gravels, expansive soil, and coal cinder base	Optional



# SANY STR SERIES TANDEM DRUM ROLLER

Designed In Germany Made In China



## OPERATOR COMFORT AND SAFETY FEATURES

- ◆ Cab mounted on three stage vibration damping mounts
- ◆ Cab climate control
- ◆ Specially designed parking brake system

## RELIABLE OIL-SPRAYING SYSTEM

- ◆ 800L plastic lined water tanks provide water for up to 5.7 continuous hours of work
- ◆ Optimized spray amount prevents asphalt from sticking to drums and limits asphalt cooling.
- ◆ A back-up spray pump for greater reliability

## DRUM VIBRATION TECHNOLOGY

- ◆ The use of water wheel type lubrication on the vibratory bearing extends the bearing life up to 5,000 hours.
- ◆ Drum evenness and smoothness meets stringent highway surface work requirements.
- ◆ Road surface clearance height at the edge can be up to 825mm.

## RELIABLE AND EFFICIENT POWER

- ◆ Sufficient power to operate on slopes
- ◆ Three stage fuel filter system
- ◆ Engine cover opens wide to provide easy access for maintenance

## EFFICIENT CONTROL SYSTEM

- ◆ The operating controls can swing up to 90° right or left to allow the operator a clear view when working at the road edges.
- ◆ The speed and direction control joystick are integrated for greater control.

## ADVANCED HYDRAULIC SYSTEM

- ◆ The closed loop hydraulic system has three filters for greater reliability.



# TECHNICAL SPECIFICATIONS

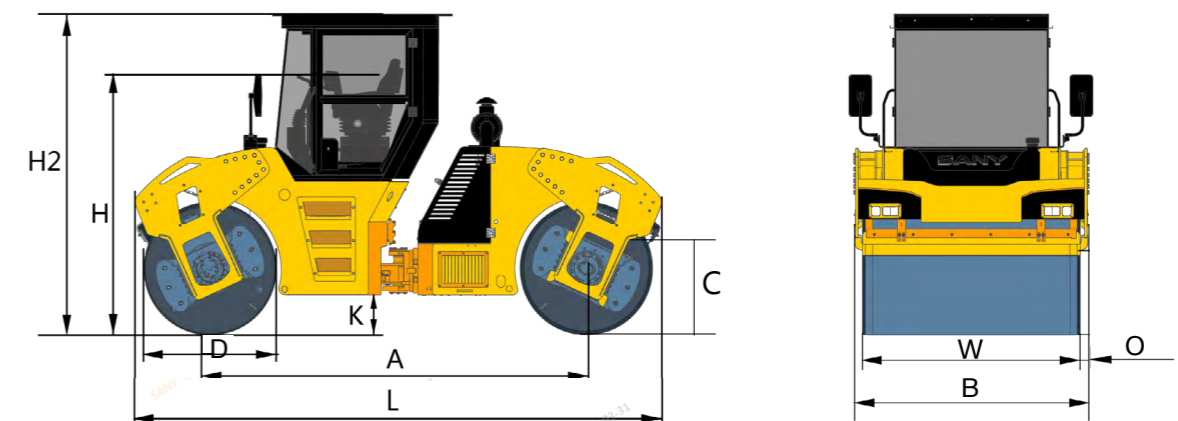
## STR Series Full Hydraulic Tandem Roller Technical Specifications

Model		STR30C-8	STR100C-8S	STR130C-8S	STR140C-8S
Weight and Load	Operating Weight	3000 kg	10500 kg	13000 kg	14000 kg
	Weight at Drum	1450 kg	5250 kg	6500 kg	7000 kg
	Weight at Rear axle	1550 kg	5250 kg	6500 kg	7000 kg
	Front Drum Static Liner Load	118 N/cm	271 N/cm	298 N/cm	330 N/cm
	Rear Drum Static Liner Load	126 N/cm	271 N/cm	298 N/cm	330N/cm
Compaction Mechanism	Vibration Frequency	55 / 67Hz	50 / 61Hz ; 40 / 50Hz	50 / 61Hz ; 40 / 50Hz	50 / 67Hz ; 40 / 55Hz
	Nominal Amplitude	0.5 mm	0.75 / 0.3mm	0.67 / 0.31mm	0.62 / 0.28mm
	Excitation Force	46/28kN	140 / 94kN ; 92 / 63kN	169 / 119kN; 110 / 80kN	169 / 143kN; 110 / 96kN
	Drum Diameter	700 mm	1240 mm	1300 mm	1400 mm
	Drum Width	1200 mm	1900mm	2135mm	2135mm
	Drum Edge Thickness	14 mm	17 mm	20 mm	20 mm
Maneuver Ability	Travel Speed	0~11 km/h	0~12.5 km/h	0~12.5 km/h	0~12.5 km/h
	Working Speed	0~6 km/h	0~7.5 km/h	0~7.5 km/h	0~7.5 km/h
	Theoretical Gradeability Vibratory	30%	30%	30%	30%
	Theoretical Gradeability Non-Vibratory	40%	35%	35%	35%
	Ground Clearance	240 mm	360 mm	380 mm	490 mm
	Wheelbase	1700 mm	3689 mm	3689 mm	3689 mm
	Steering Angle	± 30°	± 33°	± 33°	± 33°
	Swing Angle	± 6°	± 8°	± 8°	± 8°
	Min. Turning Outside Diameter	7050 mm	13530 mm	14000 mm	15800 mm
	Crab Distance	/	170 mm	170 mm	170 mm
Engine	Brand	YANMAR	WEICHAI	WEICHAI	WEICHAI
	Model	3KND4	WP4G154E331	WP4G154E331	WP4G154E331
	Cooling System	Water Cooling	Water Cooling	Water Cooling	Water Cooling
	Emission	China III	China III	China III	China III
	Rate Speed	3000rpm(gross)	2200rpm	2200rpm	2200rpm
	Rated Net Power	28.1 kW(gross)	113 kW	113 kW	113 kW
	Cylinder numbers	3	4	4	4
Capacity	Displacement	1.64L	4.5L	4.5L	4.5L
	Battery	12V × 40Ah	24V × 120Ah	24V × 120Ah	24V × 120Ah
	Water Tank	180 L	800 L	800 L	800 L
	Fuel Tank	40 L	230 L	230 L	230 L
Hydraulic Oil Tank	28 L	100 L	100 L	100 L	

## Tandem Drum Rollers STR30C-8/STR100C-8S/STR130C-8S/SPR140C-8S Standard and Optional Configurations

Config	Systems	Description	Quantity	Details	Remarks
Standard Configuration	Main Machine	STR30C-8 Tandem Drum Roller, Standard	1	1.Engine 2.Travel Pump 3.Vibration Pump 4.Travel Motor 5.Vibration Motor 6.Reduction Gears 7.Operating Platform	8.Electrical System 9.Vibratory Drum (Smooth) 10.Front Frame 11.Rear Frame 12.Water-Spraying System 13.Covering Parts 14.Seat
		STR100C-8S Tandem Drum Roller, Standard			
		STR130C-8S Tandem Drum Roller, Standard			
		STR140C-8S Tandem Drum Roller, Standard			
Optional Configuration	Cab (STR30C-8 excepted)	Cab Assembly	1	Best for windy and sandy conditions	Substitute operating platform allowed
	Cab + Air Conditioner (STR30C-8 excepted)	Cab Assembly	1	Best for windy and sandy and extreme temperature conditions	Substitute operating platform allowed
		Air Conditioner	1		
Double vibration or single vibration are optional for STR30C-8					

Size Code	STR30C-8	STR100C-8S	STR130C-8S	STR140C-8S
A (mm)	1700	3689	3689	3689
B (mm)	1280	2100	2305	2305
C (mm)	550	825	825	825
D (mm)	700	1240	1300	1400
H (mm)	/	2507	2538	2588
H2 (mm)	2560	3215	3215	3315
K (mm)	240	360	380	490
L (mm)	2550	5165	5165	5165
O (mm)	40	100	85	85
W (mm)	1200	1900	2135	2135





# SANY SPR SERIES PNEUMATIC ROLLER

## AUTOMATIC OIL-SPRAYING TECHNOLOGY

- ◆ Pneumatic powered automatic oil-spraying prevents asphalt from sticking to the tires
- ◆ Two minute suction refill of oil tank eliminates the manual refilling
- ◆ Eliminates the safety hazard of manually applying oil

## HYDRAULIC DRIVE SYSTEM

- ◆ Continuously variable drive system provides smooth starting and stopping
- ◆ Controls are easy to learn and easy to operate

## EXCEPTIONAL COMPACTION PERFORMANCE

- ◆ Meeting the demands of compaction for asphalt road and cement stabilized base

## AUTOMATIC INFLATION SYSTEM

- ◆ Tire pressure is adjustable from within the cab
- ◆ Even and consistent air pressure ensures compaction quality
- ◆ Air pressure is maintained even when a tire has a slow leak

## HYDRAULIC BRAKE SYSTEM

- ◆ Hydraulic all-wheel braking is engaged upon engine or transmission failure
- ◆ Braking distance is 50% less than similar equipment
- ◆ Transaxle brake is applied when the equipment stops without the need for hand brake





# TECHNICAL SPECIFICATIONS

## SPR Series Pneumatic Roller Technical Specifications

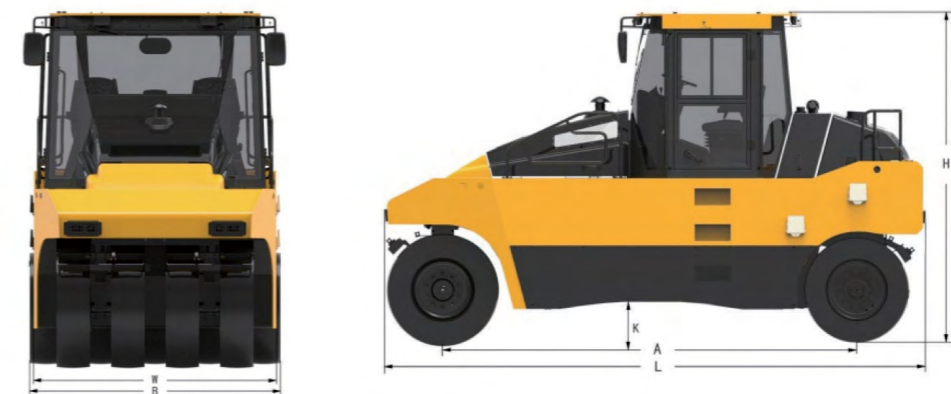
	Model	SPR160C-8	SPR200C-8	SPR260C-8	SPR300C-8
Compaction Mechanism	Max. Operating Weight	16000 kg	20000 kg	26000 kg	30000 kg
	Min. Operating Weight	10000 kg	10000 kg	11000 kg	11000 kg
	Ground Pressure	200 ~ 400kPa	200 ~ 480kPa	200 ~ 520kPa	200~540 kPa
	Single Tire Load	2 T	2.5 T	2.88 T	3.33 T
	Tire Inflation Pressure	200 ~ 800kPa	200 ~ 800kPa	200 ~ 800kPa	200~800 kPa
	Compaction Width	2085 mm	2085 mm	2368 mm	2368 mm
	Overlap	36 mm	36 mm	63 mm	63 mm
Maneuver Ability	Working Speed	0 ~ 7.6km/h	0 ~ 7.6km/h	0 ~ 8km/h	0-8 km/h
	Travel Speed	0 ~ 14km/h	0 ~ 14km/h	0 ~ 14km/h	0~14 kmh
	Steering Angle	30°	30°	30°	30°
	Gradeability	25%	25%	25%	25%
	Swing Distance	50 mm	50 mm	50 mm	50 mm
	Ground Clearance	350 mm	350 mm	350 mm	350 mm
	Wheelbase	3750 mm	3750 mm	4170 mm	4170 mm
	Min. Turning Outside Diameter	17000 mm	17000 mm	19000 mm	19000 mm
Engine	Brand	Cummins	Cummins	WEICHAI	WEICHAI
	Model	4BTAA3.9-C125	4BTAA3.9-C125	WP6G190E301	WP6G190E301
	Emission	/	/	China III	China III
	Power	93 kW	93 kW	140 kW	140 kW
	Accumulator	24V × 120Ah	24V × 120Ah	24V × 120Ah	24×120 Ah
	Cylinder numbers	4	4	6	6
	Displacement	3.9L	3.9L	6.7L	6.7L
Capacity	Water Tank	500 L	500 L	500 L	500 L
	Fuel Tank	160 L	160 L	200 L	200 L
	Hydraulic Oil Tank	100 L	100 L	100 L	100 L

Size Code	SPR160C-8	SPR200C-8	SPR260C-8	SPR300C-8
L (mm)	5200	5200	5435	5435
B (mm)	2085	2085	2368	2368
H (mm)	3275	3275	3280	3280
A (mm)	3750	3750	4170	4170
W (mm)	2036	2036	2279	2279
K (mm)	350	350	350	350

## Pneumatic Rollers SPR160C-8/SPR200C-8/SPR260C-8/SPR300C-8 Standard and Optional Configurations

Config	Systems	Description	Quantity	Details	Remarks
Standard Configuration	Main Machine	SPR260C-8/SPR300C-8 Pneumatic Roller, Standard	1	1.Engine 2.Travel Pump 3.Travel Motor 4.Transaxle 5. Cab 6. Front Covering Part 7. Front Wheel Assembly 8. Rear Wheel Assembly 9. Electrical System 10.Frame Assembly 11. Water Spraying System	
Optional Configuration	Air Conditioner	Air Condition System	1	Work in windy, sandy, and extreme temperature conditions	Optional
	Rear Vision System	Rear Vision System	1	Work in confined areas such as residential areas	Optional
	Centralized Inflation and Auto-Oil-spraying System	Centralized Inflation and Auto-Oil-spraying System	1	High-grade road works	Optional

Config	Systems	Description	Quantity	Details	Remarks
Standard Configuration	Main Machine	SPR160C-8/SPR200C-8 Pneumatic Roller, Standard	1	1.Engine 2.Travel Pump 3.Travel Motor 4.Transaxle 5. conopy 6. Front Covering Part 7. Front Wheel Assembly 8. Rear Wheel Assembly 9. Electrical System 10.Frame Assembly 11. Water Spraying System	
Optional Configuration	Cab	Cab	1	Work in windy, sandy, and extreme temperature conditions	Optional
	Air Conditioner	Air Condition System	1	Work in windy, sandy, and extreme temperature conditions	Optional
	Rear Vision System	Rear Vision System	1	Work in confined areas such as residential areas	Optional
	Centralized Inflation and Auto-Oil-spraying System	Centralized Inflation and Auto-Oil-spraying System	1	High-grade road works	Optional





# LEAN MANUFACTURING

Sany uses a lean manufacturing system designed to produce reliable products in the most efficient manner possible.



● Imported Machining Production Line



● Imported Horizontal Machining Centre



● Professional Inventory Management and Damage Prevention Measures



● World's Biggest Vehicle Assembly Line



● Sany's Digitalized Asphalt Batching Plant Base in Changde City

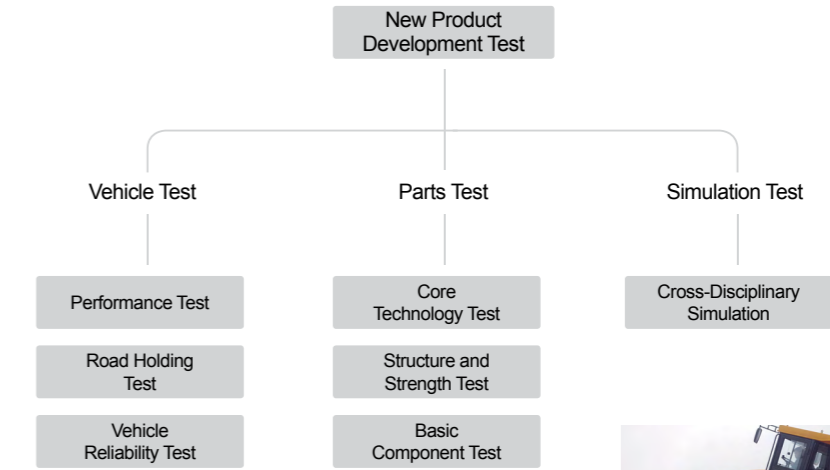
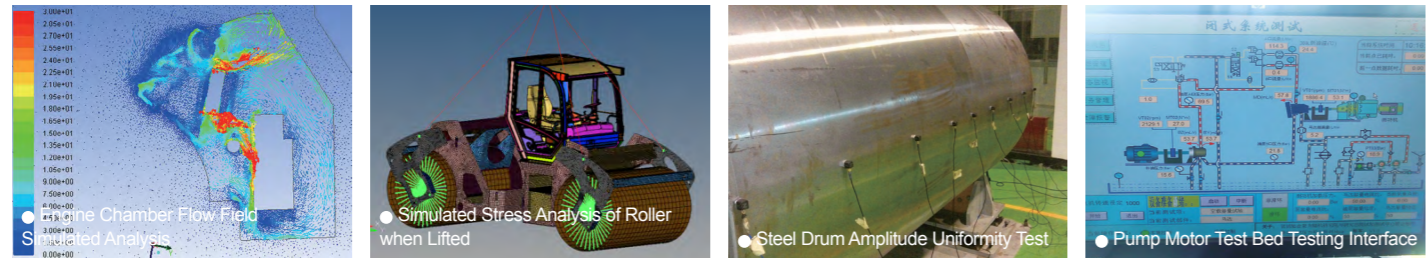


● Dust-free Constant Temperature Precision Transmission Workshop

Sany's world-class road machinery production line is the result of advanced design, optimized layout, and technical innovation. Sany continuously researches automation and intelligent equipment technologies and has created an information-oriented production management system, utilizing fully automatic robotic welders, automatically guided vehicles (AGVs) and automated warehouses. Rigorous quality control ensures that each machine is defect free, even when working in the most complicated conditions. Sany has set a new standard of engineering for the machinery industry to meet.



# TEST SYSTEM



**R&D and Test System**

To build the leading road machinery R&D platform in the world, Sany Road Machinery now has at its disposal 9 testing and checking centers and 58 labs to form a cross-disciplinary and cross-sector product development work flow. The 9 testing and checking centers include: the Construction Machinery Remote Monitoring Service and Fault-Diagnosis Lab, the Hydraulics Lab, the Mechanical-Electrical-Hydraulic and Simulation Lab, the Diesel Engine Lab, the Equipment Fatigue (Working Life) Lab, the Welding Lab, the Strength (Stress) Test Lab, the Wear-Resistant Material Test Lab, and the Automobile Chassis Auto Check Lab. Through working on the testing infrastructure, new product development test, customer experience platform, and the work conditions simulation data base, we have put in place a three-stage testing system comprising vehicle test, parts and components test, and simulation test. So far the system has the capacity to develop asphalt batching plants, asphalt pavers, motor graders, rollers, and cold planers, and the research and testing capacity to increase our overall competitiveness.



# CASES



The construction of the 2,000 kilometer Chita-Haba highway in Russia used six SANY tandem drum rollers and three pneumatic rollers.



The construction of BR-116 in Rio-Negro PR in southern Brazil used SANY's SPR260 pneumatic rollers. The 1.9 billion USD, 412.7 kilometer, federally chartered road connects Curitiba PR and the borders between Santa Catarina and Rio Grande do Sul. Daily traffic on the road is about 78,390 vehicles.

A SSR120 single drum roller along with other SANY equipment is shown here working at the Los Tres Pastorcitos quarry in Arequipa Peru. The quarry is located at an altitude of 2,300m above sea level.



SANY single drum rollers and pad foot shell kit rollers were used in the construction of the ring road surrounding the city of Sao Paulo, Brazil. The 180km road is 23km from the city center and will significantly improve traffic flow within and around the city.





