

## SINGLE DRUM SOIL COMPACTOR



A Product of Hard Work





**When it comes to high-performance  
precision compaction, it has to be JCB Vibromax**



SMOOTHLY DOES IT



For more than 80 years, the Vibromax name has been synonymous with high-performance compaction machinery. In recent years, JCB has proudly taken Vibromax to new levels, thanks to our world-class manufacturing, engineering excellence and reputation for providing the best back-up in the business.

Our latest generation of outstanding single-drum soil compactors has been carefully developed with intensive market research and leads its class in terms of quality, reliability, comfort and – most importantly – productivity. Discover how this outstanding range will make smooth work of even the toughest challenges.

# Powerful, productive and incredibly reliable

The smart money's  
on JCB Vibromax



## Affordable

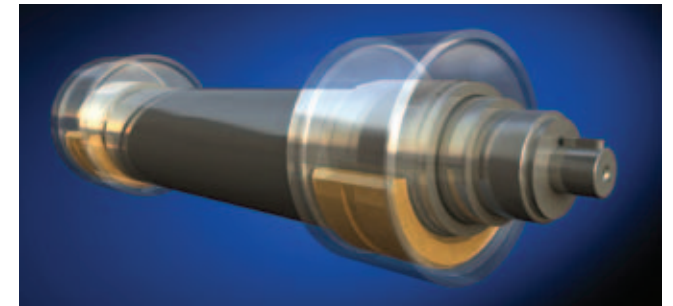
We want everyone to benefit from JCB's superior machine quality, which is why we've made each one more affordable than ever. So, as well as ensuring stringently lean manufacturing processes that keep our costs down, we are able to offer affordable finance to businesses large and small. With flexible payment options, competitive interest rates, value-for-money insurance and impressive warranty and service packages, you'll be hard pressed to find better deals with anyone else.

## Productive

JCB Vibromax rollers roll quickly, powerfully and accurately, giving you complete control and maintaining unbeatable productivity levels. And because they're built to last, you'll find them more reliable, which means lower maintenance costs and reduced downtime.

## Economical

Each sophisticated component within your single-drum roller is built to perform and ultimately cost you less. Take the single-piece eccentric shaft. It's cleverly designed to produce optimum performance while reducing maintenance to a minimum. This keeps the lifetime costs of your machine incredibly low while guaranteeing maximum durability.







## Best-in-class performance

For more compacted  
material in less time



JCB Vibromax rollers are sophisticated and versatile, ready for any challenge that lies ahead. With best-in-class compaction, all models (except the VM46) feature two frequencies and amplitudes to match a wide range of soil conditions and meeting natural soil frequencies.

Whether you're working on a motorway, runway or other construction project, the single-drum compactor provides a superior compaction output. A key component here is the unique single-piece eccentric shaft with overturning weights. It's coupled with our Automatic Vibration Control system, which avoids stationary vibration to eliminate over-compaction when changing direction.

Where other machines fail, the single-drum roller keeps going. All models produce superb gradability thanks to precise weight distribution between front and rear, a built-in switchable anti-slip system (SASS), heavy-duty no-spin axles and our renowned DIESELMAX engines with high-torque hydraulic components.







## Thoughtful design, quality components

Where engineering expertise  
meets impressive reliability

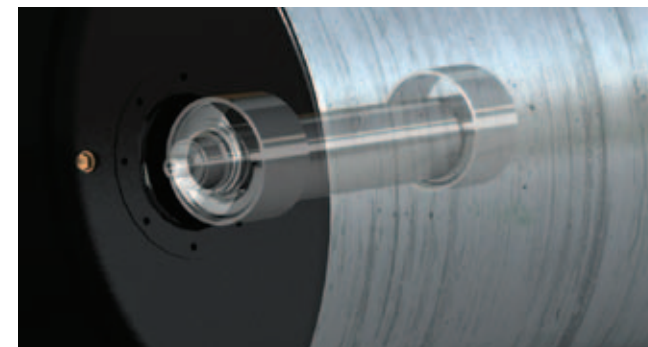


Manufactured with extensive customer input, everything about our single-drum soil compactors has been designed for quality, durability and reliability, with each world-class part rigorously tested.

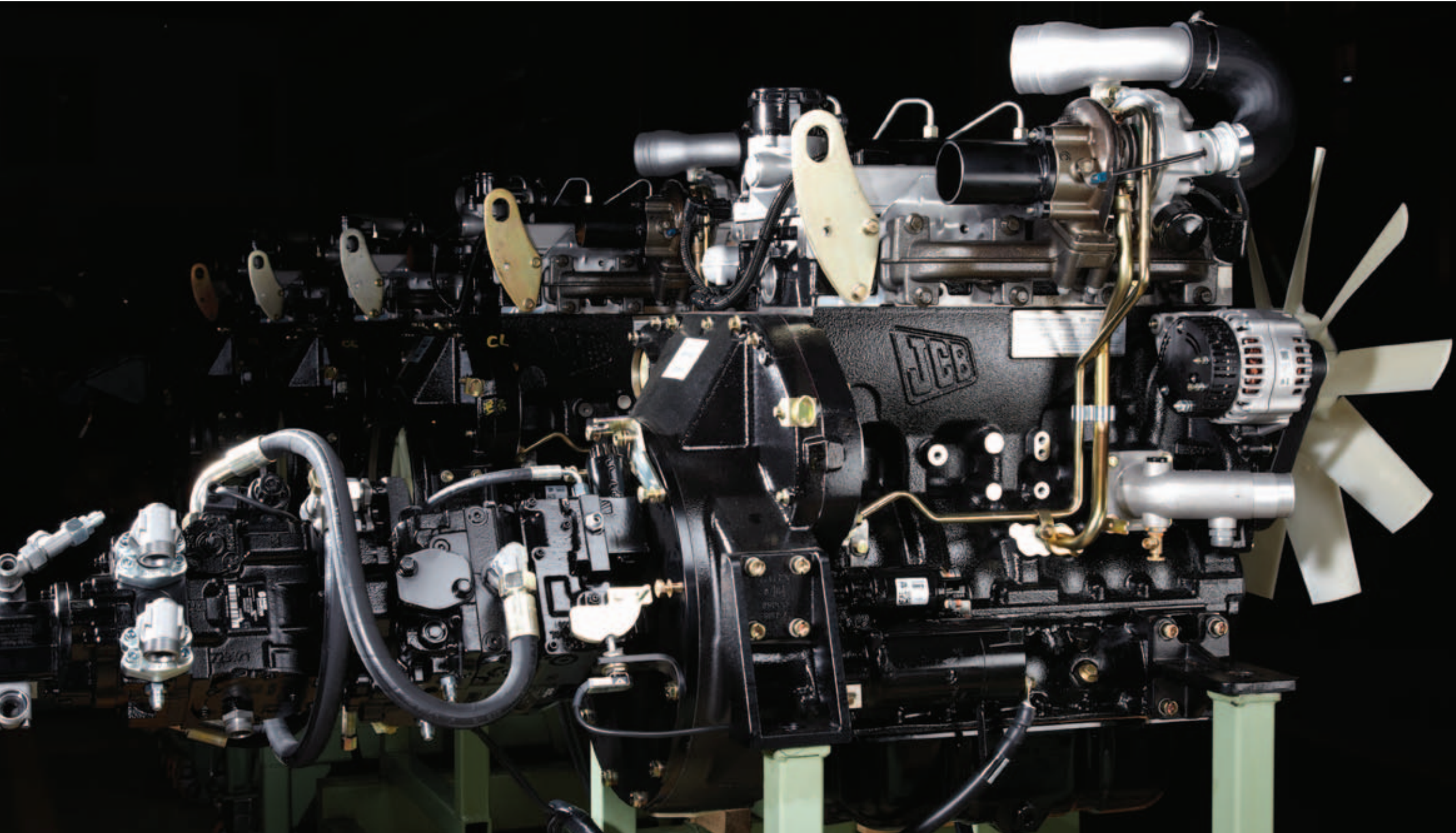
Our record-breaking, water-cooled DIESELMAX engine sits at the heart of most models machine (not on VM46, VM166 and VM200), offering tremendous power with minimum emissions. Meanwhile, the superior chassis balances weight and, along with the super strong axels, is specially built for heavy-duty construction projects. In fact, the entire frame is intelligently designed with front-to-back oscillation for extra stability, a flush finish for confined environments and over-dimensioned components for extra durability and reduced repair costs.

From the maintenance-free, lifetime-lubricated articulation joint to the sophisticated traction control system with its excellent gradability, you'll find expert engineering and superb attention to detail throughout our entire range of single-drum soil compactors.

Finally, each model that rolls off our production lines is really put through its paces, with uncompromising two-hour hot test runs. This ensures whichever model you buy, it's in top working order and ready to roll.







## Keeping you up and running

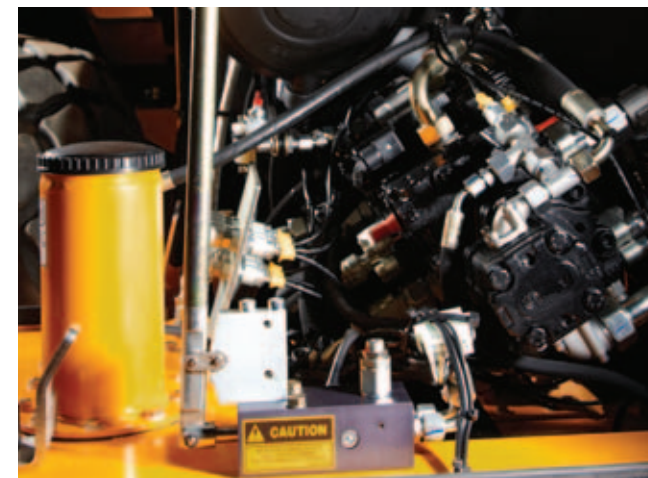
Maximum reliability means  
minimum maintenance



Thanks to the way our single-drum soil compactors are intelligently designed and manufactured by world-class engineers, each model has low maintenance demands and is incredibly easy to service.

The most important part of any roller, of course, is the drum. More sophisticated than you might initially think, the drum features pre-loaded rubber buffers which ensure it always has the correct load. In turn, this significantly lengthens the rubber buffer's life and protects the hydraulic motors against axial pressures. All models also feature heavy-duty, maintenance-free centre joints – again designed to reduce downtime and servicing costs.

When the time does come for a service, you'll find all the components accessible and the whole process quick and easy, so your machine can be back to business quickly. The compactors feature an easy-to-get-at centralised service station for their hydraulic systems, towing pumps and hydraulically lifted engine bonnets (VM132 to VM200 models). All machines feature high volume tanks to reduce refilling time and cost, having both, fuel and hydraulic tanks – well protected – under the engine bonnet.







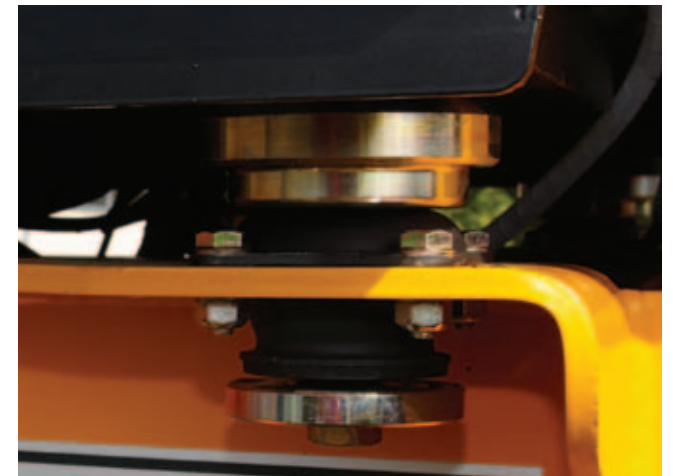
## Comfort is key

Safe, ergonomic and so  
easy to operate

For your operators to stay sharp and productive, they need to work in an environment where they feel completely comfortable and at ease.

That's why JCB has taken considerable care to get the cab and operating systems just right. Driver stands and cabins are easily accessible from both sides of the machine and once you step inside, the first thing you notice is the spacious and intuitively designed interior.

There's plenty of storage space for tools, while large windows give you 360° vision for an excellent drum-edge view and outstanding on-site safety. The controls are precise and easy to use, with an ergonomic driving lever for exact speeds and accurate changes of direction. It all adds up to a totally comfortable space that's brilliantly simple and allows an operator to feel at one with his machine.







# Introducing COMPATRONIC

For an unbeatable, smooth finish,  
time after time



One of the biggest problems with standard compaction equipment is over compaction, which leads to inconsistent compaction and uneven grounds. In the worst case scenario, the previously achieved compaction is destroyed resulting in cracks in buildings or pot holes in roads. Additionally, over compaction means more passes, a more time-consuming job, damage on the machine and more fuel wasted, costing you more money. JCB Vibromax technology eliminates these issues by offering Compatronic, an advanced compaction measurement system, for all its single-drum rollers. There are four options to choose from:

## **This is how it works:**

The accelerating sensor, mounted on the drum, is the heart of all COMPATRONIC Systems. It measures the movements of the drum while compacting and transmits these data to a microprocessor which processes the data. The loss free data transfer from sensor to the processor is key to show exact data. Therefore JCB put together sensor and processor in one compact, solid housing. The calculated compaction can now easily (loss-free as well) be transmitted to the display on the operator stand of the cabin.



## **COMPATRONIC**

Our entry-level system indicates precise vibrator frequency, jump operation and relative compaction values. The system measures the density of the material and once the highest possible density for that particular material is reached, it indicates clearly that the job is done by warning the operator by visual LEDs.





### COMPATRONIC TP

This advanced version of Compatronic gives you more detailed compaction reporting and more indications such as relative compaction value, vibrator frequency, jump operation, amplitude, requested compaction value, machine speed, the current position of the roller and how each compaction compares to the previous pass. The system also gives you the option to print your records.



### COMPATRONIC Pro

Offering you complete dynamic control, Compatronic Pro has all the features of Compatronic TP, but with added in-depth reporting. Not only does it give you details for each pass, it also gives you an overview of the compaction process for the total area you need to cover. Compatronic Pro allows you to store detailed information for 99 areas, 18 tracks per area and eight passes per track. The system comes with a printer and the latest software for your office PC.



### COMPATRONIC GPS

The newest addition to our popular range of compaction measurement systems gives you all the benefits of our Pro version but with the added advantage of a refined, scratch-proof, anti-glare display system and GPS technology. The system provides georeferenced compaction data (in easy-to-understand red-yellow-green) that can be displayed simultaneously on the in-cab display and on the site manager's PC for instantaneous live reporting.

### Operator environment

- Spacious, ergonomic and comfortable
- Easy access from both sides
- Excellent 360° views right to the drum edges

### Engine compartment

- Best-in-class service access
- Centralised service station for the hydraulic system
- Towing pump as standard

### General

- Machined drum surfaces
- High grade steel for long-lasting life
- Heavy-duty NoSpin axles



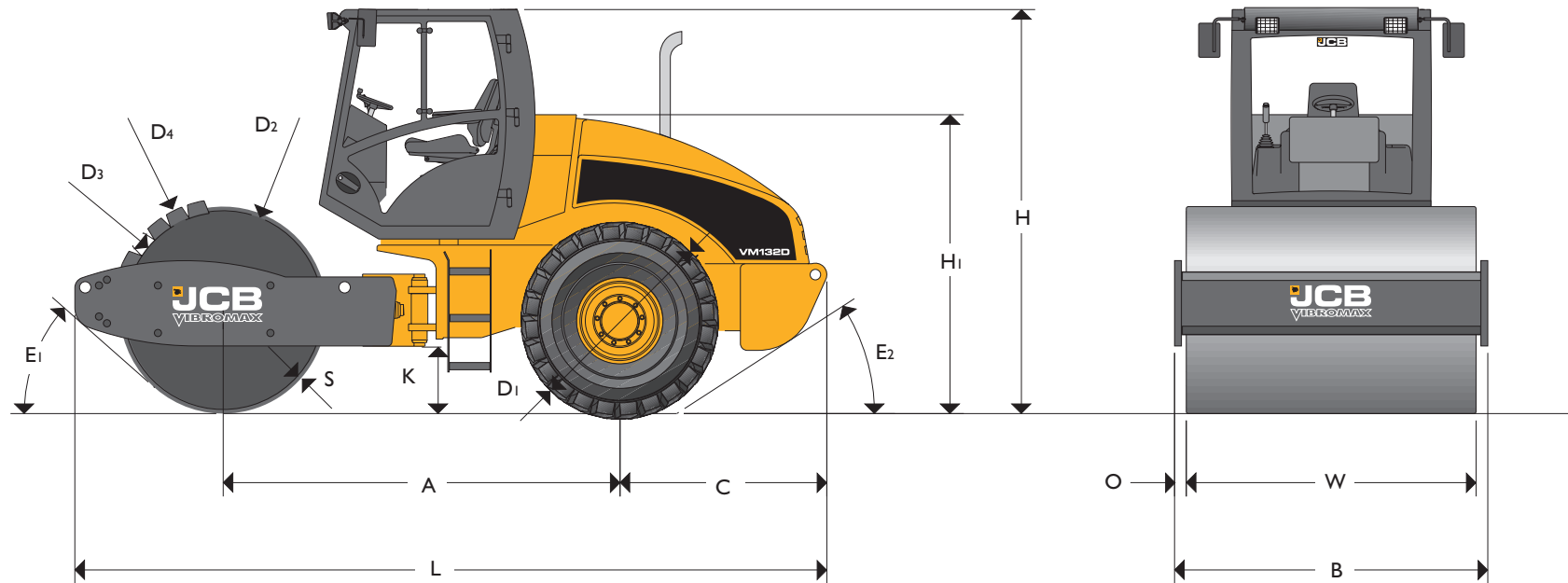
### Vibration

- Complete compaction control through AVC (Automatic Vibration Control)
- Low-maintenance, single-piece eccentric shaft for ultimate robustness and performance
- Long-life, pre-loaded rubber mountings
- 2 frequencies and 2 amplitudes (except VM46) with superior compaction output and meeting natural soil frequencies

### Chassis

- Hydraulic components protected by rock-solid drum frames
- Heavy-duty, maintenance-free centre joint
- High-volume fuel tank integrated in the counterweight





## STATIC DIMENSIONS

Dimensions in millimetres (in)		VM46	VM75	VM115	VM132	VM146	VM166	VM200
A	Wheelbase	2200 (86.6)	2514 (99.0)	2846 (112.0)	2996 (118.0)	2996 (118.0)	2996 (118.0)	3076 (121.1)
B	Overall width	1520 (59.8)	1870 (73.6)	2250 (88.6)	2270 (89.4)	2270 (89.4)	2270 (89.4)	2270 (89.4)
C	Axle to rear face	1350 (53.1)	1470 (57.9)	1523 (60.0)	1651 (65.0)	1651 (65.0)	1651 (65.0)	1660 (65.4)
D1	Wheel diameter	1176 (46.3)	1298 (51.1)	1520 (59.8)	1520 (59.8)	1520 (59.8)	1520 (59.8)	1520 (59.8)
D2	Drum diameter (smooth drum)	1000 (39.4)	1220 (48.0)	1500 (59.1)	1500 (59.1)	1500 (59.1)	1500 (59.1)	1600 (63.0)
D3	Inner diameter padfoot drum	910 (35.8)	1140 (44.9)	1400 (55.1)	1400 (55.1)	1400 (55.1)	1400 (55.1)	1400 (55.1)
D4	Outer diameter padfoot drum	1070 (42.1)	1300 (51.2)	1600 (63.0)	1600 (63.0)	1600 (63.0)	1600 (63.0)	1600 (63.0)
H	Total travel clearance	2640 (103.9)	2845 (112.0)	2935 (115.6)	2935 (115.6)	2935 (115.6)	2935 (115.6)	2985 (117.5)
H1	Height to top of seat	1915 (75.4)	2070 (81.5)	2185 (86.0)	2160 (85.0)	2160 (85.0)	2160 (85.0)	2245 (88.4)
K	Ground clearance	335 (13.2)	389 (15.3)	447 (17.6)	447 (17.6)	447 (17.6)	447 (17.6)	497 (19.6)
L	Total travel length	4375 (172.2)	4887 (192.4)	5444 (214.3)	5722 (225.3)	5722 (225.3)	5722 (225.3)	5996 (236.1)
O	Overhang	60 (2.4)	60 (2.4)	75 (3.0)	85 (3.3)	85 (3.3)	85 (3.3)	85 (3.3)
S	Drum thickness	20 (0.8)	25 (1.0)	25 (1.0)	25 (1.0)	25 (1.0)	25 (1.0)	40 (1.6)
W	Drum width	1400 (55.1)	1750 (68.9)	2100 (82.7)	2100 (82.7)	2100 (82.7)	2100 (82.7)	2100 (82.7)
E1	Front departure angle	37°	40°	41°	41°	41°	36°	35°
E2	Rear departure angle	25°	28°	32°	29°	29°	29°	29°



## SINGLE DRUM SOIL COMPACTOR | SPECIFICATION

### OPERATING DATA

		VM46D	VM46PD	VM75D		VM75PD		VM115D		VM115PD		VM115HD		VM115HPD	
Operating weight	kg (lb)	4600 (10141)	4900 (10803)	7300 (16094)		7600 (16755)		11300 (24912)		11600 (25574)		12150 (26786)		12450 (27447)	
Operating axle load front / rear	kg (lb)	2200 (4850) / 2400 (5291)	2500 (5512) / 2400 (5291)	3600 (7937) / 3700 (8157)		3900 (8598) / 3700 (8157)		6000 (13228) / 5300 (11684)		6300 (13889) / 5300 (11684)		6850 (15101) / 5300 (11684)		7150 (15762)/5300 (11684)	
Operating linear load front	kg/cm (lb/in)	15.7 (88)		20.6 (115)				28.6 (160)				32.6 (182)			
Vibration stage				1	2	1	2	1	2	1	2	1	2	1	2
Exciter frequency	Hz (vpm)	32 (1920)	32 (1920)	29 (1740)	36 (2160)	29 (1740)	36 (2160)	31 (1860)	36 (2160)	31 (1860)	36 (2160)	31 (1860)	36 (2160)	31 (1860)	36 (2160)
Nominal amplitude	mm (in)	1.8 (0.071)	1.5 (0.059)	2 (0.079)	0.8 (0.031)	2 (0.079)	0.8 (0.031)	1.95 (0.077)	0.9 (0.035)	1.95 (0.077)	0.9 (0.035)	1.95 (0.077)	0.9 (0.035)	1.95 (0.077)	0.9 (0.035)
Centrifugal force	kN (lbf)	101.6 (22841)	101.6 (22841)	138 (31024)	84 (18884)	156 (35070)	96 (21582)	261 (58675)	163 (36644)	282 (63396)	176 (39566)	261 (58675)	163 (36644)	282 (63396)	176 (39566)
Centrifugal force / drum width	N/cm (lbf/in)	726 (414)	726 (414)	789 (450)	480 (274)	891 (509)	549 (313)	1243 (710)	776 (443)	1343 (767)	838 (479)	1243 (710)	776 (443)	1343 (767)	838 (479)
Compaction depth up to	cm (in)	65 (26)	70 (28)	62 (26)	50 (20)	75 (30)	60 (24)	90 (35)	70 (28)	100 (39)	80 (31)	90 (35)	70 (28)	100 (39)	80 (31)
Working speed (forward/reverse) max.	km/h (mph)	5.8 (3.6)	5.8 (3.6)	6.9 (4.3)		6.9 (4.3)		4.5 (2.8)		4.5 (2.8)		4.5 (2.8)		4.5 (2.8)	
Travel speed (forward/reverse) max.	km/h (mph)	12.7 (7.9)	12.7 (7.9)	11 (6.8)		11 (6.8)		10.5 (6.5)		10.5 (6.5)		10.5 (6.5) / 12.5 (7.8)		10.5 (6.5) / 12.5 (7.8)	
Steering lock angle	degrees	±32	±32	±28		±28		±35		±35		±35		±35	
Vertical oscillation	degrees	±12	±12	±15		±15		±15		±15		±15		±15	
Inner turning radius	m (in)	3.1 (122)	3.1 (122)	2.97 (117)		2.97 (117)		3.4 (134)		3.4 (134)		3.4 (134)		3.4 (134)	
Tyres		12.00 R20 XZL	12.4 - 24 Dyna Torque	14.9 - 24 / 6PR AWT		14.9 - 24 Dyna Torque II		23.1 - 26 / 8 PR AWT		23.1 - 26 / 12 Tractor Tyre Tread		23.1 - 26 / 8 PR AWT		23.1 - 26 / 8 PR Dyna Torque II	
Number of padfeet			77			100				132				132	
Height of padfoot	mm (in)		80 (3.1)			80 (3.1)				100 (3.9)				100 (3.9)	
Gradeability up to	degrees (%)	31 (60)	33 (58)	31 (60)		33 (65)		31 (60)		33 (65)		31 (60)		33 (65)	

### OPERATING DATA

	VM132D		VM132PD		VM146D		VM146PD		VM166D		VM166PD		VM200D		VM200PD		
Operating weight	kg (lb)	13000 (28660)		13400 (29542)		14500 (31967)		14900 (32849)		16400 (36156)		16800 (37038)		19700 (43431)		19700 (43431)	
Operating axle load front / rear	kg (lb)	7300 (16094) / 5700 (12566)		7700 (16976) / 5700 (12566)		8000 (17637) / 6500 (14330)		8400 (18519) / 6500 (14330)		9000 (19842) / 7400 (16314)		9400 (20723) / 7400 (16314)		11800 (26015) / 7900 (17416)		11800 (26015) / 7900 (17416)	
Operating linear load front	kg/cm (lb/in)	34.8 (195)				38.1 (213)				42.9 (240)				56.2 (315)			
Vibration stage		1	2	1	2	1	2	1	2	1	2	1	2	1	2	1	2
Exciter frequency	Hz (vpm)	29 (1740)	36 (2160)	29 (1740)	36 (2160)	29 (1740)	35 (2100)	29 (1740)	35 (2100)	29 (1740)	35 (2100)	29 (1740)	35 (2100)	29 (1740)	35 (2100)	29 (1740)	35 (2100)
Nominal amplitude	mm (in)	2 (0.079)	0.8 (0.031)	2 (0.079)	0.8 (0.031)	1.8 (0.071)	0.8 (0.031)	1.8 (0.071)	0.8 (0.031)	1.8 (0.071)	0.8 (0.031)	1.8 (0.071)	0.8 (0.031)	2 (0.079)	0.75 (0.030)	2 (0.079)	0.75 (0.030)
Centrifugal force	kN (lbf)	282 (63396)	174 (39117)	305 (68567)	188 (42264)	297 (66768)	192 (43163)	317 (71264)	205 (46086)	301 (67668)	195 (43838)	321 (72164)	208 (46760)	370 (83179)	205 (46086)	370 (83179)	205 (46086)
Centrifugal force / drum width	N/cm (lbf/in)	1343 (767)	829 (473)	1452 (829)	895 (511)	1414 (808)	914 (522)	1510 (862)	976 (5570)	1433 (818)	929 (530)	1529 (873)	990 (566)	1762 (1006)	976 (557)	1762 (1006)	976 (557)
Compaction depth up to	cm (in)	100 (39)	80 (31)	110 (43)	90 (35)	120 (47)	100 (39)	130 (51)	110 (43)	130 (51)	100 (39)	140 (55)	110 (43)	145 (57)	100 (39)	155 (61)	110 (43)
Working speed (forward/reverse) max.	km/h (mph)	7.7 (4.8)		7.7 (4.8)		7.3 (4.5)		7.3 (4.5)		7.3 (4.5)		7.3 (4.5)		7.6 (4.7)		7.6 (4.7)	
Travel speed (forward/reverse) max.	km/h (mph)	12.7 (7.9)		12.7 (7.9)		11.4 (7.1)		1.4 (7.1)		11.4 (7.1)		11.4 (7.1)		11.8 (7.3)		11.8 (7.3)	
Steering lock angle	degrees	±35		±35		±35		±35		±35		±35		±35		±35	
Vertical oscillation	degrees	±15		±15		±15		±15		±15		±15		±15		±15	
Inner turning radius	m (in)	3.6 (142)		3.6 (142)		3.6 (142)		3.6 (142)		3.6 (142)		3.6 (142)		3.6 (142)		3.6 (142)	
Tyres		23.1 - 26 / 8 PR AWT		23.1 - 26 / 12 Tractor Tread		23.1 - 26 / 8 PR AWT		23.1 - 26 / 8 PR Dyna Torque II		23.1 - 26 / 8 PR AWT		23.1 - 26 / 8 PR Dyna Torque II		23.1 - 26 / 8 PR AWT		23.1 - 26 / 8 PR Dyna Torque II	
Number of padfeet				132				132				132				132	
Height of padfoot	mm (in)			100 (3.9)				100 (3.9)				100 (3.9)				100 (3.9)	
Gradeability up to	degrees (%)	31 (60)		33 (65)		32 (62)		33 (65)		32 (62)		33 (65)		24 (45)		24 (45)	





## SINGLE DRUM SOIL COMPACTOR | SPECIFICATION

### ENGINE

Four/six-cylinder, water-cooled, turbo-charged diesel engine.

Model		VM46	VM75	VM115		VM132		VM146		VM166		VM200	
		Tier 3	Tier 3	Tier 2	Tier 3	Tier 2	Tier 3	Tier 2	Tier 3	Tier 2	Tier 3	Tier 2	Tier 3
Make		Cummins	JCB	JCB	JCB	Cummins	JCB	Cummins	JCB	Cummins	Cummins	Cummins	Cummins
Model		B 3.3	444	444	444TCA	B 5.9 - I50C	444TCA	B 5.9 - I50C	444TCA	B 5.9 - I73C	Q5B6.7	B 5.9 - I50C	Q5B6.7
Piston displacement	cm³ (in³)	3260 (199)	4399 (268)	4399 (268)	4399 (268)	5880 (359)	4399 (268)	5880 (359)	4399 (268)	5880 (359)	6699 (409)	5880 (359)	6699 (409)
Performance — DIN 6271	kW (hp)	45 (60)	63 (84)	93 (125)	97 (130)	112 (150)	108 (145)	129 (173)	120 (161)	129 (173)		129 (173)	
Operating speed	min <sup>-1</sup> (rpm)	2200 (2200)	2200 (2200)	2200 (2200)		2200 (2200)		2200 (2200)		2200 (2200)		2200 (2200)	
Starting device		Electric motor	Electric motor	Electric motor		Electric motor		Electric motor		Electric motor		Electric motor	
Air cleaner		Dry cartridge with safety cartridge	Dry cartridge with safety cartridge	Dry cartridge with safety cartridge		Dry cartridge with safety cartridge		Dry cartridge with safety cartridge		Dry cartridge with safety cartridge		Dry cartridge with safety cartridge	
Fuel filter		Cartridge	Cartridge	Cartridge		Cartridge		Cartridge		Cartridge		Cartridge	

### SERVICE CAPACITIES

Model		VM46	VM75	VM115/VM115H	VM132	VM146	VM166	VM200
Fuel	litres (US gal)	180 (47.6)	230 (60.8)	300 (79.3)	400 (105.7)	400 (105.7)	400 (105.7)	320 (84.5)
Engine oil (engine)	litres (US gal)	8 (2.1)	8 (2.1)	14 (3.7)	14.2 (3.8)	14.5 (3.8)	14.5 (3.8)	14.5 (3.8)
Gear oil (exciter)	litres (US gal)	2.5 (0.7)	3 (0.8)	3.5 (0.9)	12 (3.2)	12 (3.2)	12 (3.2)	12 (3.2)
Hydraulic oil	litres (US gal)	60 (15.9)	80 (21.1)	80 (21.1)	80 (21.1)	80 (21.1)	80 (21.1)	80 (21.1)
Coolant	litres (US gal)	14 (3.7)	14 (3.7)	14 (3.7)	19 (5.0)	19 (5.0)	19 (5.0)	19 (5.0)

### PROPULSION

Infinitely variable hydrostatic direct drive by variable displacement motor on rear axle and drum, Multidisc self-locking differential (NoSPIN).

### EXCITER DRIVE

Electrically controlled hydrostatic direct drive on drum.

### EXCITER

Single-shaft circular exciter with overturning weights. VM46 without overturning weights.

### STEERING SYSTEM

Servo assisted center articulation with vertical oscillation.

### BRAKING SYSTEM

**Service brake:** Hydrostatic propulsion system.  
**Parking brake:** Hydraulically released multi-disk brake on rear axle and drum drive.  
**Emergency brake:** Electrically controlled, disk brake on rear axle and drum drive.

### ELECTRICAL SYSTEM

Voltage	V	12
Battery capacity	Ah	143
Alternator	A	max. 95

### INDICATORS AND SWITCHES

Hour meter, fuel, engine temperature, engine oil pressure, battery charging current, hydraulic oil and air filter condition, parking brake, neutral position control lever, speed range selection, frequency, AVC (Automatic Vibration Control), acoustic back-up alarm. Optional lighting, turn signal, hazard-warning lights.

### OPTIONS

High comfort ROPS/FOPS certified cabin, ROPS frame, working lights, road traffic lights, yellow rotating beacon, adapter for turning seat, several homologation kits, padfoot shell kits (3 segments) with scraper, polyurethane scrapers, levelling blades, tachograph, tractor and diamond pattern tread spare wheels, tool bags, COMPATRONIC, COMPATRONIC TP, COMPATRONIC PRO, COMPATRONIC PRO, COMPATRONIC GPS, anti-vandalism cover for dashboard, heating, aircondition, FOPS roof for ROPS frame, canopy, air precleaner.

## COMPACTED LAYER THICKNESS UP TO... (m)

Machine	Weight (kg)	Rock	Sand / Gravel	Mixed soil	Clay / Loam
VM46D	4,600 <sup>†</sup>	—	0.40	0.35	0.15
VM75D	7,300*	—	0.50	0.40	0.15
VM115D	11,300*	0.90	0.60	0.50	0.20
VM132D	13,000*	1.00	0.70	0.60	0.25
VM146D	14,500*	1.20	0.90	0.65	0.30
VM166D	16,400*	1.30	1.00	0.70	0.35
VM200D	19,700	1.45	1.20	0.80	0.40

## COMPACTED OUTPUT... (m³/h)

Machine	Weight (kg)	Rock	Sand / Gravel	Mixed soil	Clay / Loam
VM46D	4,600 <sup>†</sup>	—	130 – 260	110 – 220	50 – 100
VM75D	7,300*	—	210 – 420	160 – 330	60 – 120
VM115D	11,300*	460 – 920	300 – 600	250 – 500	100 – 200
VM132D	13,000*	510 – 1020	350 – 700	300 – 600	130 – 260
VM146D	14,500*	610 – 1220	460 – 920	330 – 660	150 – 300
VM166D	16,400*	660 – 1320	510 – 1020	360 – 720	180 – 360
VM200D	19,700*	740 – 1480	610 – 1220	410 – 820	205 – 410



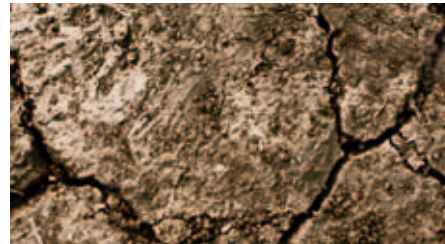
Rock



Sand / Gravel



Mixed Soil



Clay / Loam

### Assumption and Notes:

The achieved compaction and productivity values will vary with exact material composition and moisture content. In critical applications these values should always be verified by physical measurement. Laboratory soil test should always be carried out to assess the soil structure & strength for compaction.

Weights- CECE with ROPS<sup>†</sup> or Cab\*

Working Width: 2.1 m with 0.2 m overlap of paths

Working speed: 60 m/min (= 3 km/h)

Compaction Output speed: 75 % of working speed = 2.25 km/h

Compaction Output: assumes 80% of maximum layer thickness stated in upper table

Compaction Output: Number of passes are 4....8





## COMPACTED LAYER THICKNESS UP TO... (m)

Machine	Weight (kg)	Rock	Sand / Gravel	Mixed soil	Clay / Loam
VM46PD	4,900 <sup>†</sup>	–	0.40	0.35	0.20
VM75PD	7,600*	–	0.50	0.40	0.20
VM115PD	11,600*	0.90	0.60	0.50	0.25
VM132PD	13,400*	1.00	0.70	0.60	0.30
VM146PD	14,900*	1.20	0.90	0.65	0.35
VM166PD	16,800*	1.30	1.00	0.70	0.40
VM200PD	19,700*	1.45	1.20	0.80	0.45

## COMPACTED OUTPUT... (m³/h)

Machine	Weight (kg)	Rock	Sand / Gravel	Mixed soil	Clay / Loam
VM46PD	4,900 <sup>†</sup>	–	130 – 260	110 – 220	65 – 130
VM75PD	7,600*	–	210 – 420	160 – 330	80 – 160
VM115PD	11,600*	460 – 920	300 – 600	250 – 500	130 – 260
VM132PD	13,400*	510 – 1020	350 – 700	300 – 600	150 – 300
VM146PD	14,900*	610 – 1220	460 – 920	330 – 660	180 – 360
VM166PD	16,800*	660 – 1320	510 – 1020	360 – 720	200 – 410
VM200PD	19,700*	740 – 1480	610 – 1220	410 – 820	230 – 460



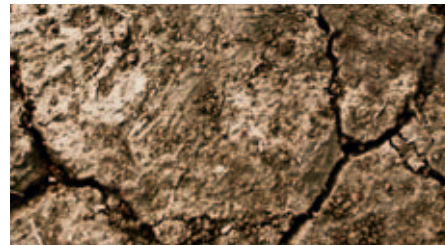
Rock



Sand / Gravel



Mixed Soil



Clay / Loam

### Assumption and Notes:

The achieved compaction and productivity values will vary with exact material composition and moisture content. In critical applications these values should always be verified by physical measurement. Laboratory soil test should always be carried out to assess the soil structure & strength for compaction.

Weights- CECE with ROPS<sup>†</sup> or Cab\*

Working Width: 2.1 m with 0.2 m overlap of paths

Working speed: 60 m/min (= 3 km/h)

Compaction Output speed: 75 % of working speed = 2.25 km/h

Compaction Output: assumes 80% of maximum layer thickness stated in upper table

Compaction Output: Number of passes are 4....8





ROPS plus FOPS roof.



Quick and easy fitting of padfoot shell segments (3 segments). Kit comes with scrapers.



Anti-vandalism cover for dashboard.



Water sprinkler kit, complete with water tank, water pump, polyurethane scrapers, nozzles and spray bar



Levelling blade.



COMPATRONIC, COMPATRONIC TP, COMPATRONIC PRO, COMPATRONIC GPS





# JCB Assetcare

## Flexible aftercare solutions

JCB Assetcare is a range of flexible service options designed to ensure you get the very highest standards of machine servicing, no matter what your budget. It guarantees you the optimum level of aftersales support, with highly skilled, factory-trained engineers using genuine JCB parts and lubricants to maintain maximum machine performance.

This allows your machine to be covered to maximise uptime and profitability throughout its operating life.

*“For complete peace of mind  
and cost predictability  
choose JCB Assetcare.”*

JCB Assetcare offers you the following options, which can be tailor-made to meet your specific requirements including excellence as standard:

For complete peace of mind and total budget predictability, your JCB dealer can offer a **Full Repair and Maintenance package**, with a fixed monthly sum covering all regular maintenance and necessary repairs including **Flexicare** for excavators and wheeled loading shovels, to give a pay by the hour alternative.

A **JCB Service Agreement** allows you to plan and manage your maintenance budget over a period of hours, or years of machine use, as determined by you. The price is maintained for the duration of the agreement and includes all parts, lubricants, labour and travel to maximise your machine performance.

**JCB Sure Price Service (pay as you go)** includes all genuine JCB lubricants, filters, greases and other parts and is carried out as you require it. The all-inclusive price also covers labour, 100 point check and any travel. Service intervals are hours based (usually every 500 hours) and no prior agreement is required; simply advise your dealer when the machine reaches the recommended service interval for great value for money.

**JCB Machinery Protection Plan** protects you against any unexpected failure for up to 2, 3, 4 or 5 years or up to 10,000 hours depending on machine type. You can take up a Machinery Protection Plan at any time during the first three months of ownership, and the package is transferable on the initial machine sale. Coverage options are 500, 1000, 1500 or 2000 hours per year (model dependent).

**JCB Driveline Protection Plan** – sign up to a Service Agreement on backhoe or loadall mechanical transmission machines and get **FREE** Driveline Protection for every 1,000 hours you commit to (covers Engine, Transmission and Axle).

*For the full terms and conditions of the above programmes please speak to your local dealer.*







## A few words about JCB

A groundbreaking, world-class family business with a commitment to supporting our customers and protecting the environment



**A family company on a global scale.** JCB is no ordinary company. From the dreams of one man, Joseph Cyril Bamford, we have grown into the world's largest privately owned construction equipment company. Since 1945, the same attention to detail, passion for progress and family spirit has taken us from strength to strength.

Nowadays JCB operates across six continents, manufacturing at 18 factories in the UK, Brazil, Germany, China, North America and India. With 1,500 dealer depots selling and supporting our products in over 150 countries, we are the global market leader for backhoe loaders and telescopic handlers.

**A history of world-class innovation.** Our business has always been driven by innovation, using only the most advanced technology, meticulous design, precision engineering and rigorous testing. Evidence of this commitment to innovation is illustrated in our revolutionary JCB DIESELMAX engine. Having grabbed the headlines when it smashed the world diesel land speed record at 350.092mph, it is now providing our customers with tomorrow's performance today.



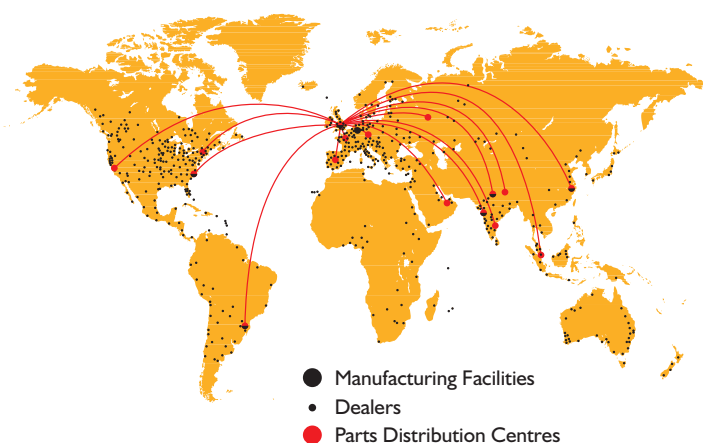
**Doing things more efficiently, more sustainably.** Since 2007 we have reduced our carbon emissions by 20%. We are continually working to further reduce the carbon footprint of our operations and, in partnership with our suppliers, our whole supply chain. We are also committed to designing our products to be sustainable during manufacturing, over the life of the machine and through end-of-life recycling. Our new Eco machines, for example, offer significant fuel and carbon savings; an average of 16% on the Eco backhoes, Eco skid steers and Eco compact track loaders, and 22% on the 8085 Eco.





## The best back-up in the business

Whether we're providing you with support, parts or finance, we aim for 100% satisfaction. It's all part of our promise to put you, the customer, first



**Wherever you are, we are.** Our mission to provide world-class support and deliver 100% satisfaction reaches into more than 1,500 dealer depots, spanning 150 countries across six continents. The aim? To bring you global expertise at a local level. We truly believe no other manufacturer does more to understand the subtle differences between one region of the world and another. It's a degree of attention that we maintain at every level of the company and an assurance to our customers that wherever they are in the world, JCB will fulfil their needs.

**Trust the genuine article.** At the heart of the support network is our impressive World Parts Centre, a state-of-the-art facility operating 24/7 to dispatch more than a million genuine parts and attachments every week to our dealers and international distribution centres. Because we understand the need to minimise downtime, we utilise the latest logistics and warehouse management systems and have committed to an 'Anywhere in 24 hours' strategy.

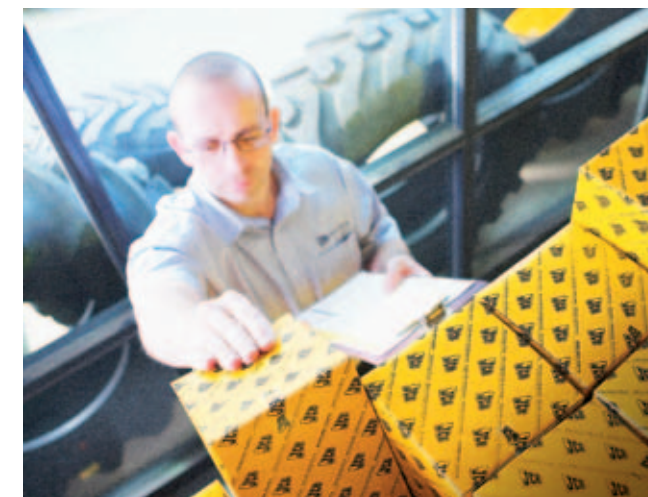
**Keeping you up and running.** Just as important as genuine JCB parts are the people who fit and maintain them. Our JCB-trained technicians in all of those 1,500-plus dealer depots provide excellent, expert customer care, whether it's routine servicing or something more urgent. If there is an emergency breakdown situation, we need to act fast. This is why all our dealers operate their own fleets of support vehicles, enabling parts to be delivered quickly and fitted expertly, and fulfilling our promise to keep our customers working.

**Maximising earning potential.** We grow as our customers grow. That's why, at JCB, we are committed to offering expert financial advice and support to help customers maximise their earning potential.

Finance options\* are available for new and used machinery, all part of our dedication to helping customers preserve their working capital while spreading costs in the most effective and tax-efficient way.

And as well as financial help, we are also happy to offer JCB Insurance.\* We specialise in construction and industrial insurance and in offering Insurance Premium Finance facilities.

*\* Please check individual countries for available services.*







JCB Vibromax GmbH  
Schäferberg 1  
06466 Gatersleben, Germany  
Tel: +49 (0) 39482 -700  
Fax: +49 (0) 39482 -70102

JCB Sales Limited,  
Rocester, Staffordshire,  
United Kingdom ST14 5JP.  
Tel: +44 (0)1889 590312  
Email: [salesinfo@jcb.com](mailto:salesinfo@jcb.com)

[www.jcbvibromax.de](http://www.jcbvibromax.de)

JCB reserves the right to change specification without notice. Some machines shown within this brochure are fitted with optional equipment which may vary between territories. The JCB logo is a registered trademark of J.C. Bamford Excavators Ltd. Printed in the UK on paper made from sustainable forests. The pulp used in the manufacture of this paper is made from renewable timber produced on a fully sustainable basis, and is bleached without the use of chlorine gas (ECF – Elemental Chlorine Free). This paper is suitable for recycling.

