

CORMACH



22500 E A.S.C.



www.cormach.com

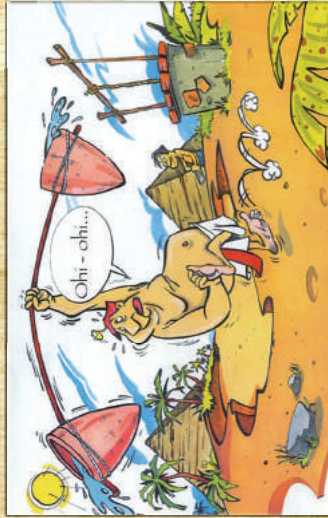
... ABOUT ANCIENT

EGYPT MANUSCRIPTS



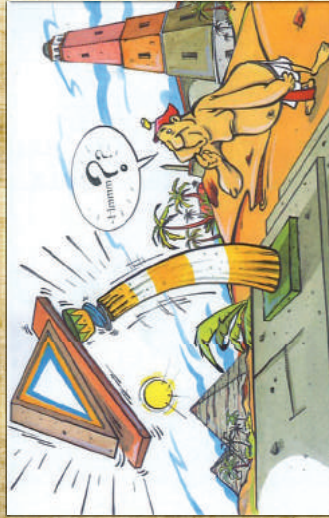
KRANKAMON, PHARAOH OF EGYPT, DREAMED ABOUT HIS PYRAMID, THAT IN HIS INTENT SHOULD BECOME THE BIGGEST EVER BUILT.

* Phew! What hard work. Is it possible that anybody can think of a better pushing system?



THE BUILDING PROCESS WAS SLOW BEING HIS RESOURCES LIMITED TO SLAVES AND MATERIAL.

* But, why is it such hard work using only one support?



THE PHARAOH LIVED A SHORT AND HARD LIFE AND THE KRANKAMON PYRAMIDS REMAINED A DREAM.

* There is something illogical in this system. The offset boom unbalances the structure.



LATER THE PHARAOH DECIDED TO BUILD AN OBELISK WITH HIS IMAGE ON TOP.

Why is the structure so weak? It cannot carry the weight of my statue!



PHARAOH CORMISES, YEARS LATER, DREAMED THE SAME DREAM, OF THE BIGGEST PYRAMID BEING HIS OWN.

Here is the solution: Cormach system with roller bearing, faster and more efficient.



BEING OLD HE DECIDED TO FINISH KRANKAMON WORK, BUT HE NEEDED SOMETHING TO SPEED THE WORK UP.

* Here is the solution: Cormach system with double mast and double lifting cylinders.



CORMISES DREAM CAME THROUGH AND HIS PYRAMID WILL STAND FOR EVER.

* Here is the solution: Cormach boom in central position makes the structure more balanced. Excellent.



MANY YEARS LATER CORMISES BUILT HIS OBELISK WITH HIS STATUE ON TOP FOR ALL THE PEOPLE TO SEE HIS IMAGE FOR YEARS TO COME.

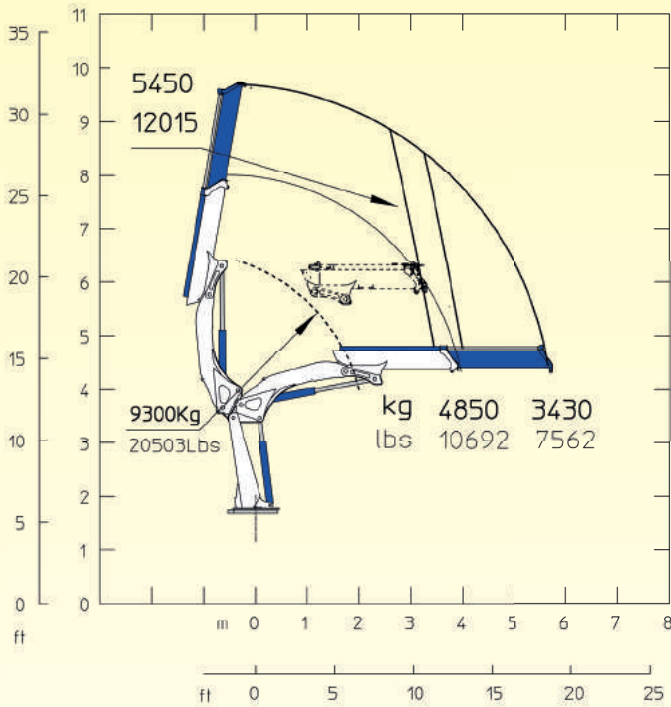
* Amazing!! the balanced structure can support a much heavier load!!

END

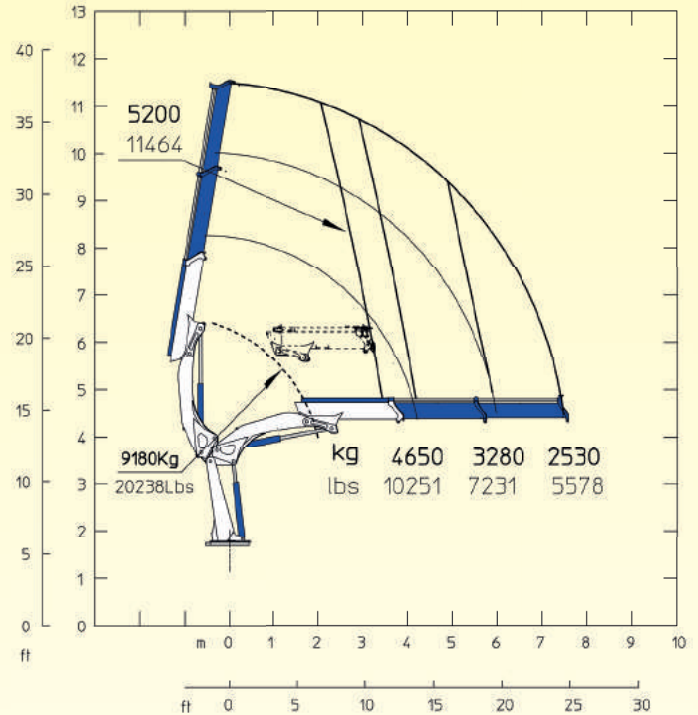


22500 E A.S.C.

22500 E1 A.S.C



22500 E2 A.S.C.



STANDARD



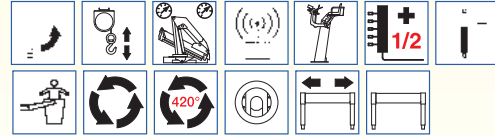
OPTIONAL



STANDARD

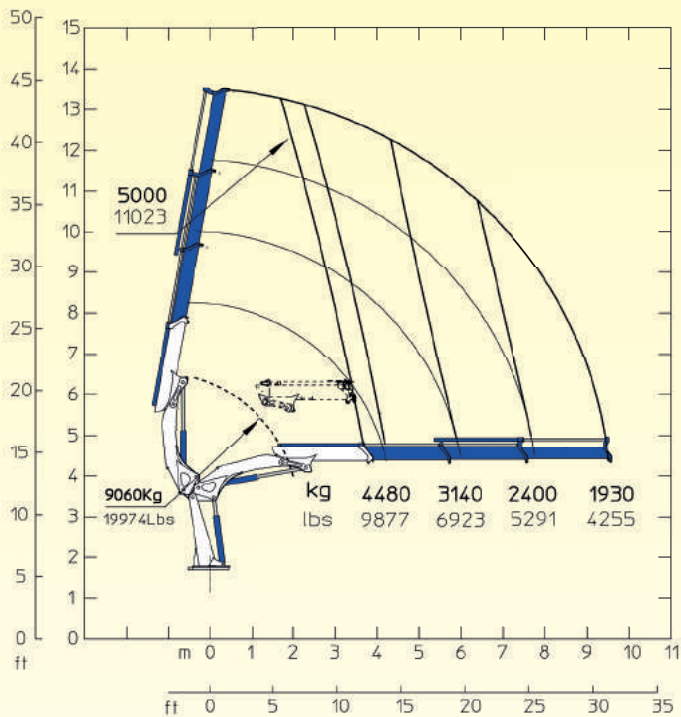


OPTIONAL

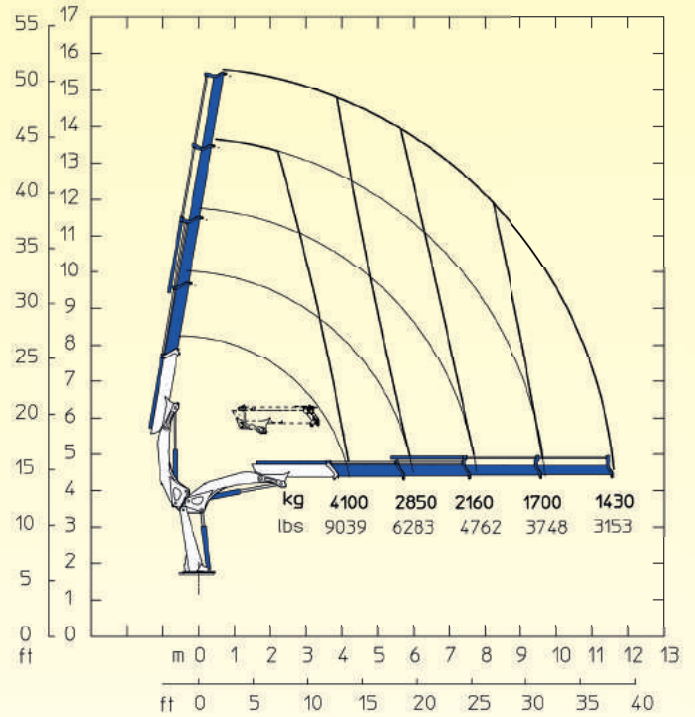


E1	E1		E2	E2
23000 daN*m	166391 Lb*ft	Momento statico massimo al perno torretta • Max. static moment at the turret pin Moment statique max. a l'axe de la tourelle • Max. statisches ubmoment am kransaulenbolzen	23000 daN*m	166391 Lb*ft
5.72 m	18' 9"	Sbraccio idraulico • Hydraulic boom length Longueur du bras hydraulique • Hydraulic reichweite	7.56 m	24' 10"
11.56 m	37' 11"	Sbraccio con prolunghe manuali • Boom length with manual extensions Longueur du bras avec rallonges manuelles	13.70 m	44' 11"
2600 daN*m	18810 Lb*ft	Coppia di rotazione • Slew torque • Moment de rotation • Drehmoment	2600 daN*m	18810 Lb*ft
40 s - 360°	40 s - 360°	Tempo di rotazione • Slewing speed • Temp de rotation • Schwenkgeschwindigkeit	40 s - 360°	40 s - 360°
1850+1600 mm	6' 1" + 5' 3"	Uscita stabilizzatori • Outriggers extensions Sortie des bequilles • Breite der abstützung	1850+1600 mm	6' 1" + 5' 3"
5830 mm	19' 2"	Larghezza stabilizzatori • Outriggers width Largeur des bequilles • Breite der abstützung	5830 mm	19' 2"
949 mm	3' 1"	Lunghezza • Length • Longueur • Länge	949 mm	3' 1"
2515 mm	8' 3"	Larghezza • Width • Largeur • Breite	2515 mm	8' 3"
2281 mm	7' 6"	Altezza • Height • Hauteur • Höhe	2281 mm	7' 6"
2460 kg	5423 lbs	Peso (senza olio e montaggio) • Weight (without oil and fitting) Poids (sans huile et montage) • Gewicht (ohne öl und ohne)	2600 kg	5732 lbs
45 l/min	12 us gal/min	Portata pompa (*) • Pump delivery (*) • Capacité de la pompe (*) • Pumpenleistung (*)	45 l/min	12 us gal/min
315 bar	4480 psi	Pressione • Pressure • Pression • Druck	315 bar	4480 psi
140 l	37 us gal	Capacità serbatoio olio • Oil tank capacity • Capacité de reservoir d'huile • Öl tank inhalt	140 l	37 us gal

22500 E3 A.S.C.



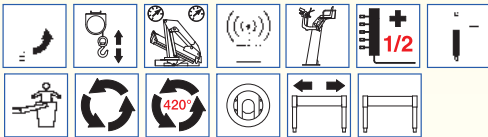
22500 E4 A.S.C.



STANDARD



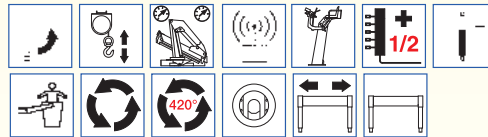
OPTIONAL



STANDARD



OPTIONAL

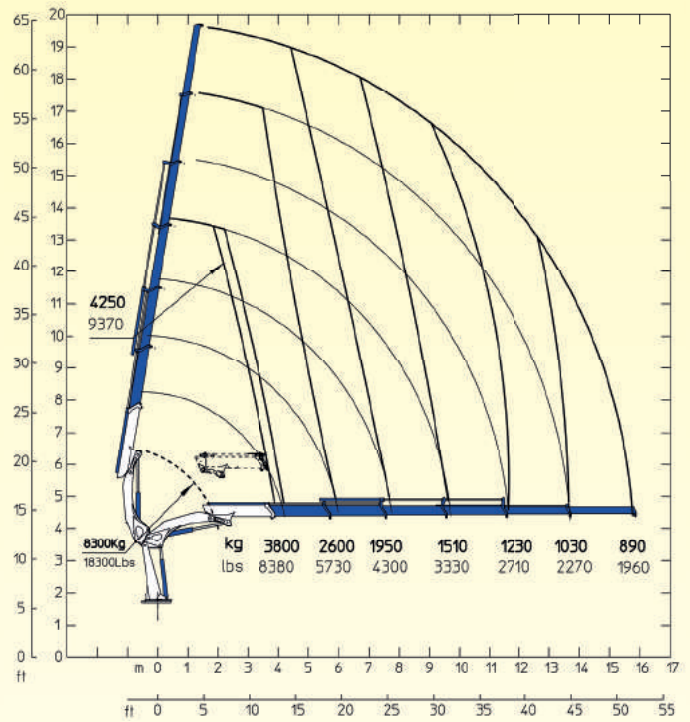
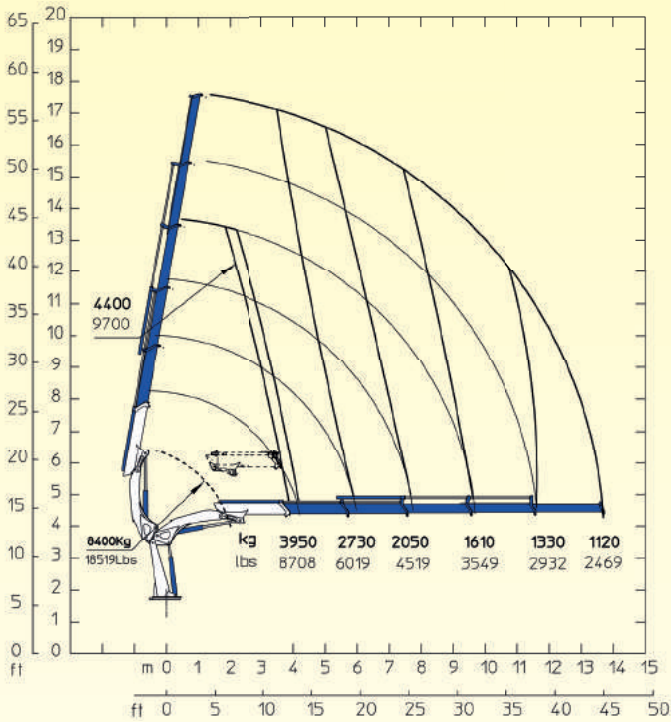


E3	E3		E4	E4
23000 daN*m	166391 Lb*ft	Momento statico massimo al perno torretta • Max. static moment at the turret pin Moment statique max. a l'axe de la tourelle • Max. statisches ubmoment am kran Saulenbolzen	22000 daN*m	159160 Lb*ft
9.56 m	31' 4"	Sbraccio idraulico • Hydraulic boom length Longueur du bras hydraulique • Hydraulic reichweite	11.56 m	37' 11"
15.84 m	51' 12"	Sbraccio con prolunghe manuali • Boom length with manual extensions Longueur du bras avec rallonges manuelles	15.84 m	51' 12"
2600 daN*m	18810 Lb*ft	Coppia di rotazione • Slew torque • Moment de rotation • Drehmoment	2600 daN*m	18810 Lb*ft
40 s - 360°	40 s - 360°	Tempo di rotazione • Slewing speed • Temp de rotation • Schwenkgeschwindigkeit	40 s - 360°	40 s - 360°
1850+1600 mm	6' 1" + 5' 3"	Uscita stabilizzatori • Outriggers extensions Sortie des bequilles • Breite der abstützung	1850+1600 mm	6' 1" + 5' 3"
5830 mm	19' 2"	Larghezza stabilizzatori • Outriggers width Largeur des bequilles • Breite der abstützung	5830 mm	19' 2"
949 mm	3' 1"	Lunghezza • Length • Longueur • Länge	949 mm	3' 1"
2515 mm	8' 3"	Larghezza • Width • Largeur • Breite	2515 mm	8' 3"
2281 mm	7' 6"	Altezza • Height • Hauteur • Höhe	2281 mm	7' 6"
2740 kg	6041 lbs	Peso (senza olio e montaggio) • Weight (without oil and fitting) Poids (sans huile et montage) • Gewicht (ohne öl und ohne)	2860 kg	6305 lbs
45 l/min	12 us gal/min	Portata pompa (*) • Pump delivery (*) • Capacité de la pompe (*) • Pumpenleistung (*)	45 l/min	12 us gal/min
315 bar	4480 psi	Pressione • Pressure • Pression • Druck	305 bar	4337 psi
140 l	37 us gal	Capacità serbatoio olio • Oil tank capacity • Capacité de reservoir d'huile • Öl tank inhalt	140 l	37 us gal

22500 E A.S.C.

22500 E5 A.S.C.

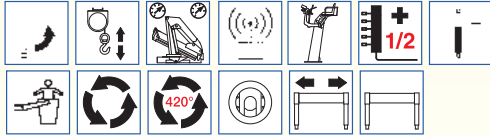
22500 E6 A.S.C.



STANDARD



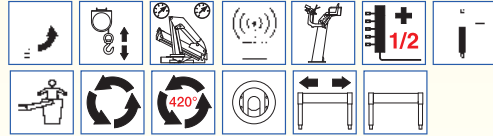
OPTIONAL



STANDARD

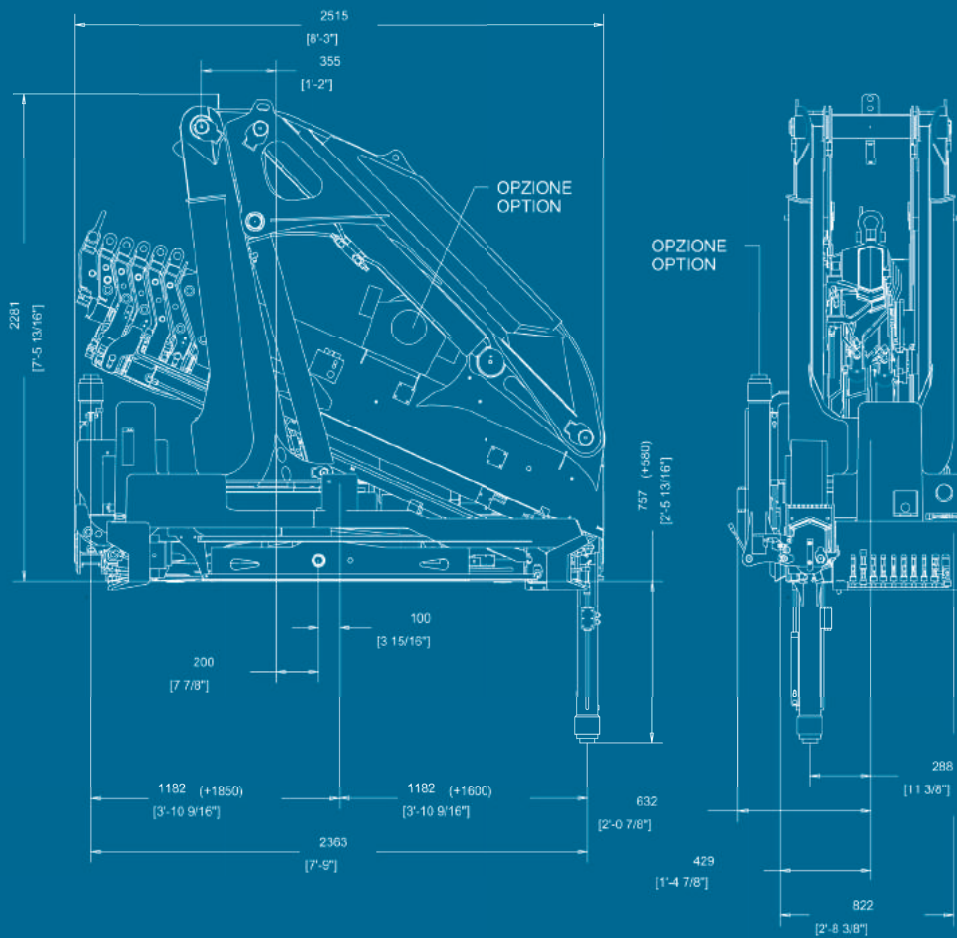


OPTIONAL



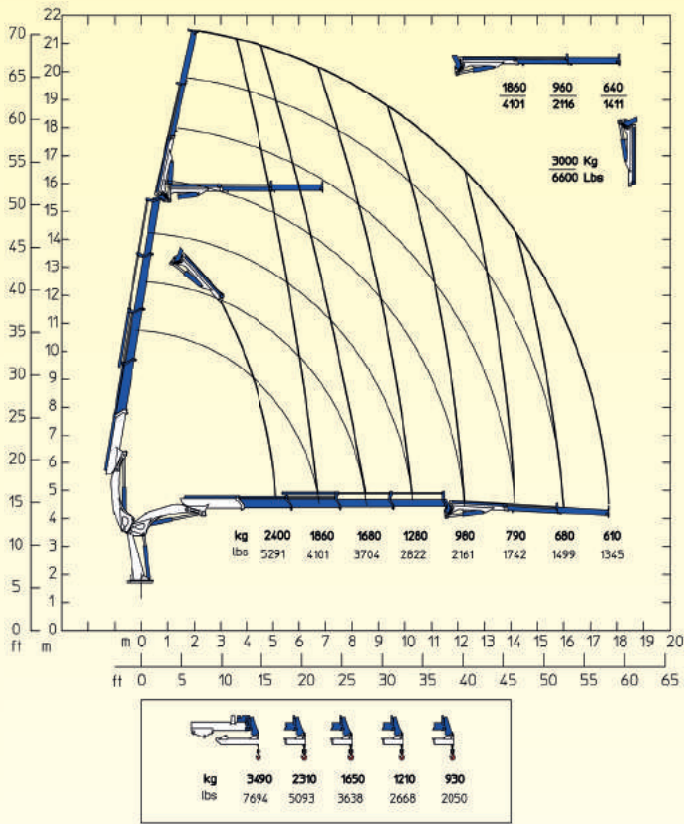
E5	E5		E6	E6
22000 daN*m	159160 Lb*ft	Momento statico massimo al perno torretta • Max. static moment at the turret pin Moment statique max. a l'axe de la tourelle • Max. statisches ubmoment am kransaulenbolzen	22000 daN*m	159160 Lb*ft
13.70 m	44' 11"	Sbraccio idraulico • Hydraulic boom length Longueur du bras hydraulique • Hydraulic reichweite	15.84 m	51' 12"
15.84 m	51' 12"	Sbraccio con prolunghe manuali • Boom length with manual extensions Longueur du bras avec rallonges manuelles	/	/
2600 daN*m	18810 Lb*ft	Coppia di rotazione • Slew torque • Moment de rotation • Drehmoment	2600 daN*m	18810 Lb*ft
40 s - 360°	40 s - 360°	Tempo di rotazione • Slewing speed • Temp de rotation • Schwenkgeschwindigkeit	40 s - 360°	40 s - 360°
1850+1600 mm	6' 1" + 5' 3"	Uscita stabilizzatori • Outriggers extensions Sortie des bequilles • Breite der abstützung	1850+1600 mm	6' 1" + 5' 3"
5830 mm	19' 2"	Larghezza stabilizzatori • Outriggers width Largeur des bequilles • Breite der abstützung	5830 mm	19' 2"
949 mm	3' 1"	Lunghezza • Length • Longueur • Länge	949 mm	3' 1"
2515 mm	8' 3"	Larghezza • Width • Largeur • Breite	2515 mm	8' 3"
2281 mm	7' 6"	Altezza • Height • Hauteur • Höhe	2281 mm	7' 6"
2960 kg	6526 lbs	Peso (senza olio e montaggio) • Weight (without oil and fitting) Poids (sans huile et montage) • Gewicht (ohne öl und ohne)	3060 kg	6746 lbs
45 l/min	12 us gal/min	Portata pompa (*) • Pump delivery (*) • Capacité de la pompe (*) • Pumpenleistung (*)	45 l/min	12 us gal/min
305 bar	4337 psi	Pressione • Pressure • Pression • Druck	305 bar	4337 psi
140 l	37 us gal	Capacità serbatoio olio • Oil tank capacity • Capacité de reservoir d'huile • Öl tank inhalt	140 l	37 us gal

(*) Consigliata, (*) Recommended, (*) Reconnommé, (*) Empfohlen.

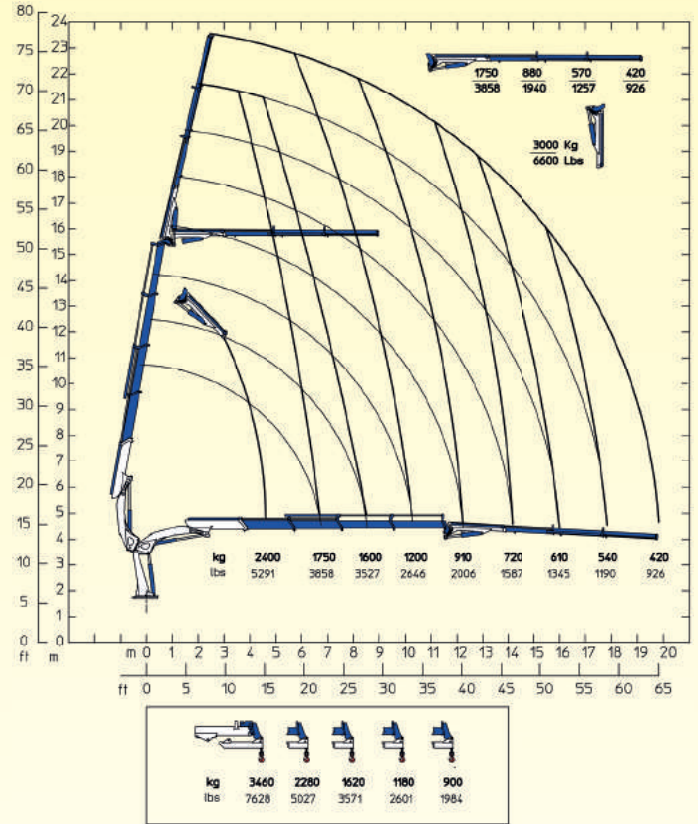


22500 E A.S.C.

22500 E4F62 A.S.C. Plus



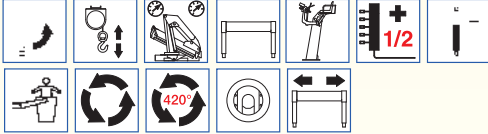
22500 E4F63 A.S.C. Plus



STANDARD



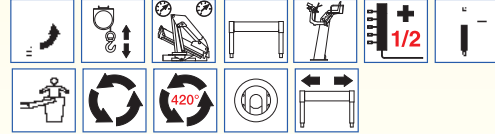
OPTIONAL



STANDARD

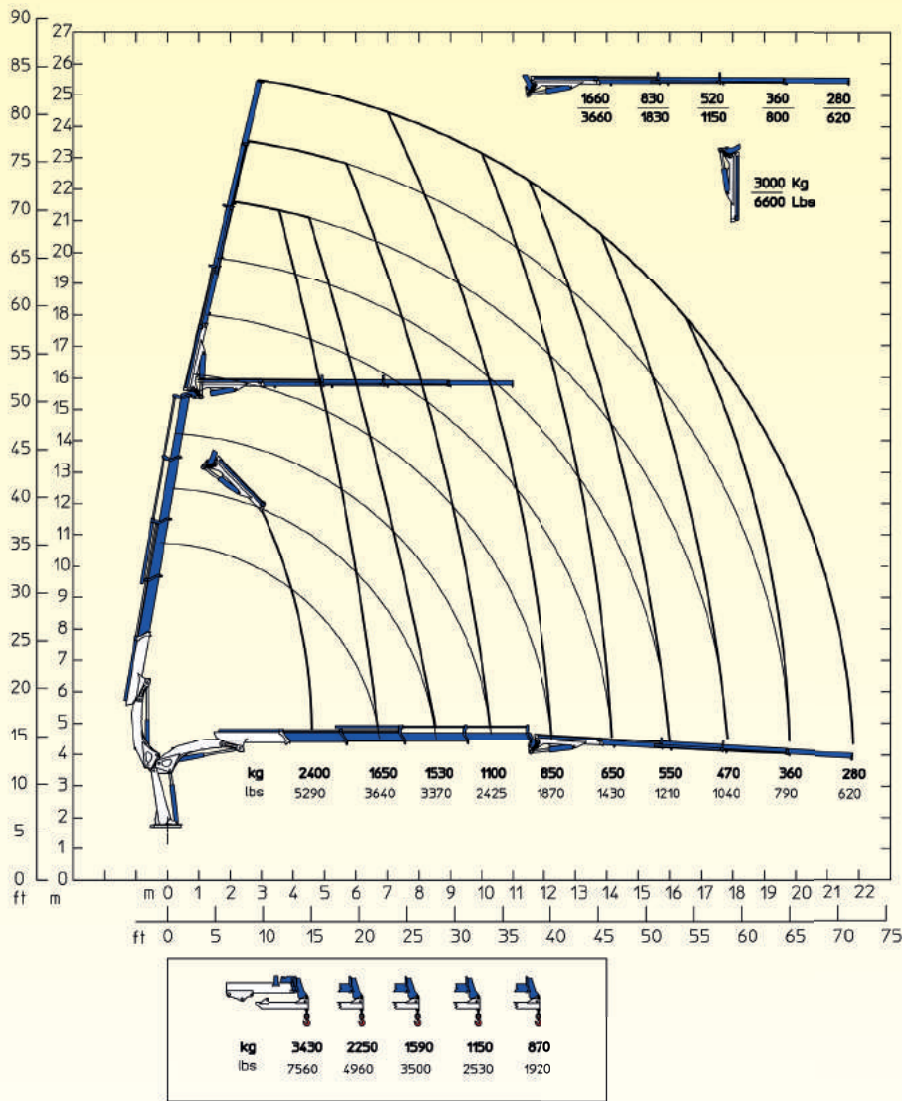


OPTIONAL

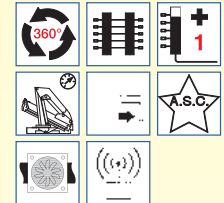


E4F62	E4F62		E4F63	E4F63
22000 daN*m	159160 Lb*ft	Momento statico massimo al perno torretta • Max. static moment at the turret pin Moment statique max. a l'axe de la tourelle • Max. statisches ubmoment am kran Saulenbolzen	22000 daN*m	159160 Lb*ft
17.69 m	58'	Sbraccio idraulico • Hydraulic boom length Longueur du bras hydraulique • Hydraulic reichweite	19.73 m	64' 9"
/	/	Sbraccio con prolunghe manuali • Boom length with manual extensions Longueur du bras avec rallonges manuelles	/	/
2600 daN*m	18810 Lb*ft	Coppia di rotazione • Slew torque • Moment de rotation • Drehmoment	2600 daN*m	18810 Lb*ft
40 s - 360°	40 s - 360°	Tempo di rotazione • Slewing speed • Temp de rotation • Schwenkgeschwindigkeit	40 s - 360°	40 s - 360°
1850+1600 mm	6' 1" + 5' 3"	Uscita stabilizzatori • Outriggers extensions Sortie des bequilles • Breite der abstützung	1850+1600 mm	6' 1" + 5' 3"
5830 mm	19' 2"	Larghezza stabilizzatori • Outriggers width Largeur des bequilles • Breite der abstützung	5830 mm	19' 2"
949 mm	3' 1"	Lunghezza • Length • Longueur • Länge	949 mm	3' 1"
2515 mm	8' 3"	Larghezza • Width • Largeur • Breite	2515 mm	8' 3"
2352 mm	7' 9"	Altezza • Height • Hauteur • Höhe	2352 mm	7' 9"
3390 kg	7474 lbs	Peso (senza olio e montaggio) • Weight (without oil and fitting) Poids (sans huile et montage) • Gewicht (ohne öl und ohne)	3460 kg	7628 lbs
45 l/min	12 us gal/min	Portata pompa (*) • Pump delivery (*) • Capacité de la pompe (*) • Pumpenleistung (*)	45 l/min	12 us gal/min
305 bar	4337 psi	Pressione • Pressure • Pression • Druck	305 bar	4337 psi
140 l	37 us gal	Capacità serbatoio olio • Oil tank capacity • Capacité de reservoir d'huile • Öl tank inhalt	140 l	37 us gal

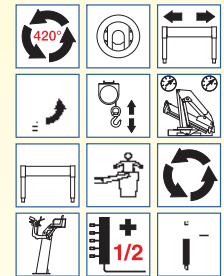
22500 E4F64 A.S.C. Plus



STANDARD

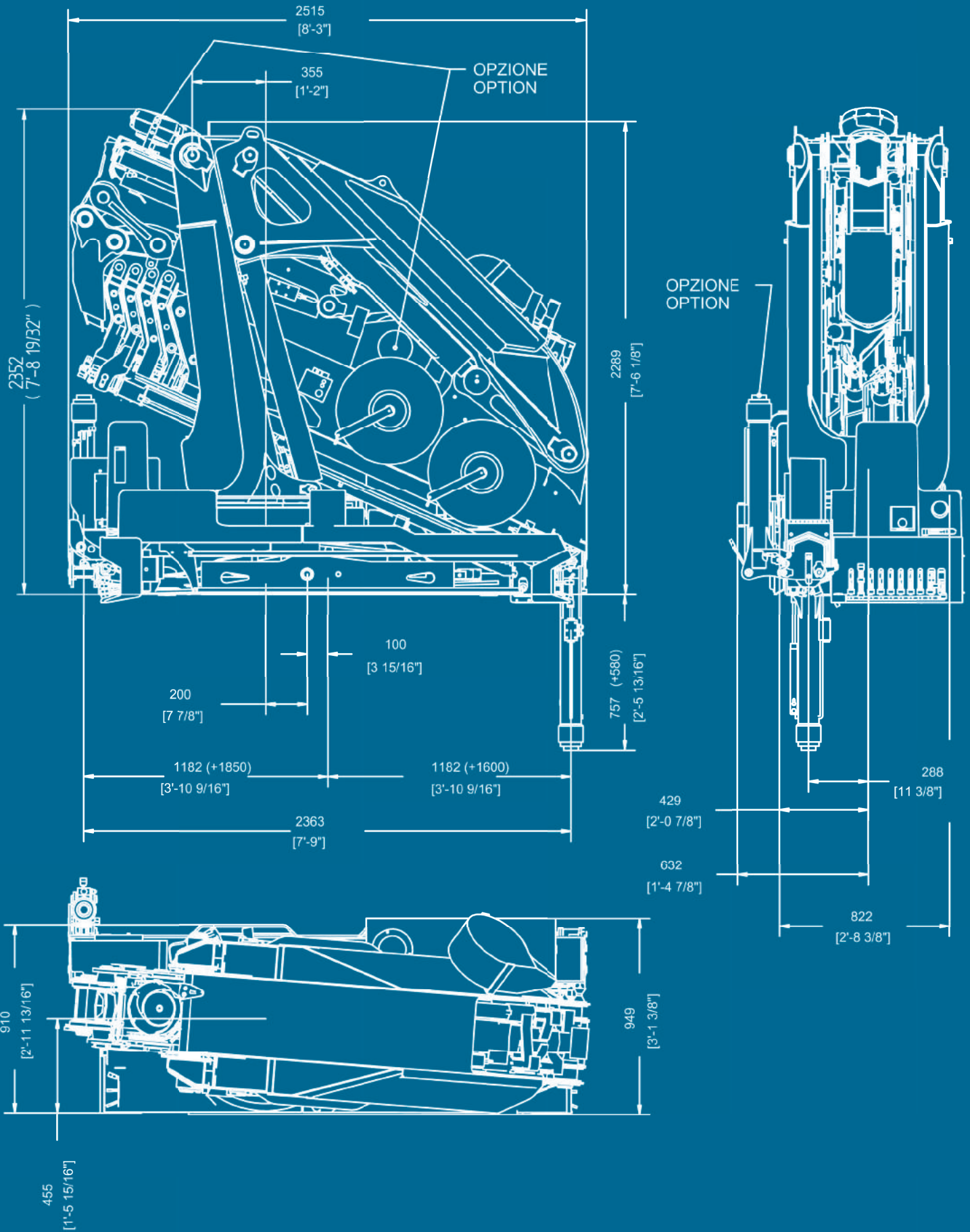


OPTIONAL



E4F64	E4F64	
22000 daN*m	159160 Lb*ft	Momento statico massimo al perno torretta • Max. static moment at the turret pin Moment statique max. a l'axe de la tourelle • Max. statisches ubmoment am kranaulenbolzen
21.77 m	71' 5"	Sbraccio idraulico • Hydraulic boom length Longueur du bras hydraulique • Hydraulic reichweite
/	/	Sbraccio con prolunghe manuali • Boom length with manual extensions Longueur du bras avec rallonges manuelles
2600 daN*m	18814 Lb*ft	Coppia di rotazione • Slew torque • Moment de rotation • Drehmoment
40 s - 360°	40 s - 360°	Tempo di rotazione • Slewing speed • Temp de rotation • Schwenkgeschwindigkeit
1850+1600 mm	6' 1" + 5' 3"	Uscita stabilizzatori • Outriggers extensions Sortie des bequilles • Breite der abstützung
5830 mm	19' 2"	Larghezza stabilizzatori • Outriggers width Largeur des bequilles • Breite der abstützung
949 mm	3' 1"	Lunghezza • Length • Longeur • Länge
2515 mm	8' 3"	Larghezza • Width • Largeur • Breite
2352 mm	7' 9"	Altezza • Height • Huteur • Höhe
3520 kg	7760 lbs	Peso (senza olio e montaggio) • Weight (without oil and fitting) Poids (sans huile et montage) • Gewicht (ohne öl und ohne)
45 l/min	12 us gal/min	Portata pompa (*) • Pump delivery (*) • Capacité de la pompe (*) • Pumpenheistung (*)
305 bar	4337 psi	Pressione • Pressure • Pression • Druck
140 l	37 us gal	Capacità serbatoio olio • Oil tank capacity • Capacité de reservoir d'huile • Öl tank inhalt

22500 E A.S.C.





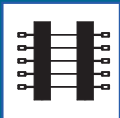
STANDARD



Automatic Speed Control
Automatic Speed Control
Automatic Speed Control
Automatic Speed Control



Limitatore di momento
Load limiting device
Limiteur de charge
Überlastabschal tungssystem



Comandi bilaterali
Duals control stations
Commandes a gauche et a droite
Beidseitige bedienung



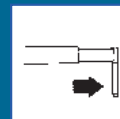
Rotazione 360°
Rotation 360°
Rotation 360°
Drehbereich 360°



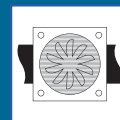
Comando supplementare non attivato (1)
Additional free section not actived (1)
Section du distributeur pas activée (1)
Zusätzlicher steuerschieber (1)



Radiocomando (DI SERIE SOLO PER GRU CON JIB)
Radio remote control (SUPPLIED AS STANDARD ON CRANES EQUIPPED WITH JIB)
Radiocommandes (FOURNI EN SERIE SOLEMENT SUR GRUES AVEC JIB)
Funkfernsteuerung (SERIENMÄßIG GELIEFERT NUR MIT JIB AUSGERÜSTETE KRANE)



Stabilizzatori gru base estendibili idraulicamente
Outriggers with hydraulic
Stabilisateurs avec extension hydraulique
Hydraulisch ausfahrbare stützen

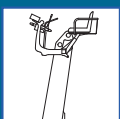


Scambiatore di calore
Oil cooler
Echangeur de chaleur
Ölkühler

OPTIONAL



Doppio limitatore di momento
Double load limiting device
Double limiteur de charge
Doppel Überlastabschal tungssystem



Posto di manovra in alto
Top seat
Siege en haut
Hochsitz



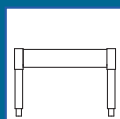
Castello
Basket
Nacelle
Personenkorb



Trattamento marino della gru
Marine treatment of the crane
Trattement marine de la grue
Marine behandlung des kranes



Comando supplementare attivato (1/2)
Additional function (1/2)
Section du distributeur activée (1/2)
Zusatzfunktion (1/2)



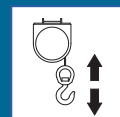
Traversa ausiliaria fissa
Additional outriggers beam without extension
Stabilisateur supplementaires sans elargissement
Zusätzliche abstützbeine



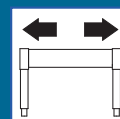
Rotazione continua
Continuos rotation
Rotation continue
Endlos schwenkwerk



Rotazione 420°
Rotation 420°
Rotation 420°
Drehbereich 420°



Verricello
Winch
Treuil
Seilwinde



Traversa ausiliaria estendibile
Additional outriggers with lateral extension
Stabilisateur supplementaires avec elargissement
Ausfahrbare zusatz- stützen



Stabilizzatori gru base girevoli
Tilt up outriggers
Bequilles tournants
Drehbare stützen



Piastre di appoggio maggiorate
Large ground plates
Plaques stabilisateurs
Bodenplatten



CORMACH

Cormach s.r.l. - Via Madonnina, 27 - C.P. 199 - 25018 MONTICHIARI (BS) - ITALY
 Tel. 0039.030.9656811 - Telefax 0039.030.9656846.7.8
 E-mail: info@cormach.com - www.cormach.com

A fronte di una continua ricerca tecnologica i dati possono cambiare senza preavviso. Contattare il nostro Ufficio Commerciale per ulteriori informazioni.
 Because of continuous technology research data can change without notice. Please, contact our Commercial Dept. for further information.
 A cause de une continue recherche technologique les données peuvent changer sans preavis. Contacter notre Bureau Commercial pour des autres informations.
 Irrtum und technische Änderung vorbehalten masse und gewichte unverbindlich. Unser Vertrieb erteilt Ihnen gerne weitere Auskünfte. Bitte rufen Sie uns an.
 Debido a los continuos avances tecnológicos los datos pueden variar sin notificación previa. Para más información rogamos contacten nuestro Departamento Comercial.