

DOOSAN

Construction Equipment

Excavator Attachments

Hydraulic Breaker / Fixed Pulverizer / Rotating Crusher /
Multi-processor / Steel Shear / Multi-Grapple / Stone Grapple /
Wood Grapple / Log Grapple / Orange Grapple /
Hydraulic Quick Coupler / Clamshell Bucket /
Plate Compactor / Pile Driver /
Ripper / Vibrating Ripper



DOOSAN HEAVY EXCAVATOR ATTACHMENTS

Doosan's portfolio of Attachments are designed to work in all types of working applications. The new range of DOOSAN attachments which are offered, are developed based on customer's requirements and satisfaction criteria through worldwide market feedback. The attachments series consists of demolition, material handling, earth moving and connecting attachments.



HYDRAULIC BREAKER



ROTATING CRUSHER



FIXED PULVERIZER



VIBRATING RIPPER



PILE DRIVER



MULTI-PROCESSOR



STEEL SHEAR



MULTI-GRAPPLE



STONE GRAPPLE

DOOSAN HEAVY EXCAVATOR ATTACHMENTS USING THE 6 KINDS OF GOOD REASONS



ONE-STOP SHOP

One place for complete solutions :
(carrier + attachments + parts + service)



ENGINEERING APPROVED

Optimized for DOOSAN equipment high efficiency and performance, resulting in lower running and maintenance cost.



SERVICE

Broad coverage via the DOOSAN service network, fully supported by DOOSAN product specialists.



QUALITY

Products manufactured to highest standards.



WARRANTY

Avoid compatibility issues and operating differences from using Non-approved attachments.



PLUG & PLAY READINESS

Easy to install and operate.



RIPPER



PLATE COMPACTOR



CLAMSHELL BUCKET



HYDRAULIC QUICK COUPLER



ORANGE GRAPPLE



LOG GRAPPLE



WOOD GRAPPLE

Demolition Attachments

HYDRAULIC BREAKER

- ✓ Best Fit
- ✓ Service
- ✓ Performance
- ✓ Quality



Product

Reinforced dampeners

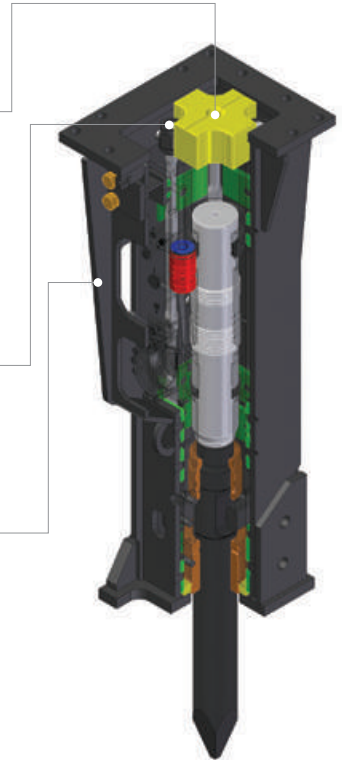
- Vibration dampening prevents carrier damage and improves operator comfort.
- Minimizing recoil shock induced by impact.
- Low noise for city construction.

Stronger through bolt

- Further improved tensile strength by innovative shape and machining process.

Completed box enclosure

- No rigid side bolts.
- Minimized maintenance cost.
- Extremely durable welded structure.
- Completely protected Hammer and Less noise.
- Wear and dust protection.



Model		DXB10	DXB20	DXB35	DXB45	DXB90	DXB160	
Carrier weight	t	1~2.5	2.5~4.5	4~6	6~8	12~16	20~27	
Operating weight	H	kg	-	-	340	490	1,000	1,652
	T	kg	90	170	330	500	940	1,742
	BH	kg	-	-	290	430	-	-
	SL	kg	-	-	400	-	-	-
Tool diameter	mm	47	57	70	77	107	135	
Operating pressure	bar	130	140	170	170	180	160~180	
Flow	Min.	ℓ/min.	15	25	35	45	80	100
	Max.	ℓ/min.	30	45	65	90	140	150
Frequency	High BPM	blows/min	1,100	1,000	1,000	1,000	820	330~500
	Low BPM	blows/min	-	-	-	-	-	220~360
Energy/blow	High BPM	J	200	400	660	1,000	2,100	2,200
	Low BPM	J	-	-	-	-	-	3,100
Automatic grease option		-	-	-	-	-	●	
Two-speed control		-	-	-	-	-	●	



Unique valve design

- Low pressure fluctuation.
- Special design protecting carrier's pump.

Long piston : optimal energy transmission

- Transmission
- Maximized productivity.
- Minimized recoil.
- Eliminates mechanical springs.
- Special heat-treated and hardened piston.

Hardened rock dragger

- Resisting wear and abrasion.

Feature & Benefits

Concrete proven working Principle (Oil and gas assist)

- Pressurized Nitrogen gas is the main power source, to operate with less demand on the carrier's hydraulic system.

Anti-blank blow system

- Significantly reduces blank blow induced failures.

Dual Speed Control

- Adjust blow frequency according to rock hardness.

Competitive component counts

- One-third the component counts of competitors.
- Easy installation and maintenance.
- Help inventory management.

Heavy duty main bracket design

- Bear external force with better resilience.
- Long lasting body structure reduced sound.

Maximized life time of dampers and wear plates

- Use new type of composite 2 layered damper and wear plate.

Centralized Lubricating System (option)

- Enable to utilize centralized auto grease system.

DXB170	DXB190	DXB230	DXB260	DXB420	DXB500	DXB700
18~28	26~32	26~35	30~38	32~45	40~70	60~110
1,620	1,750	2,275	2,550	3,356	4,165	6,686
1,680	1,850	2,529	-	-	-	-
-	-	-	-	-	-	-
-	-	-	-	-	-	-
137	142	150	156	165	175	200
180	180	165~185	180	165~185	165~185	165~185
100	120	170	150	200	230	320
150	180	240	240	280	330	420
600	540	430~620	520	420~600	350~500	370~480
	360	320~470	330	330~450	250~370	280~370
3,400	3,000	3,400	4,500	6,000	7,900	10,000
	4,000	4,500	6,000	7,600	10,400	13,000
●	●	●	●	●	●	●
-	●	●	●	●	●	●

Demolition Attachments

FIXED PULVERIZER

Doosan Fixed Pulverizers are designed for both primary demolition work and secondary concrete reduction. For secondary demolition, it is ideal for breaking out concrete from fixed structure, pulverizing concrete, separating different materials for recycling, and cutting reinforced rods and small steel profile.



Product



Pulverizing tooth
On the outer end of jaw for high productivity during pulverizing job.



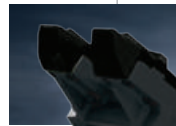
Tooth bolting style
For quick and effective replacement. (welded type is also available)



Adjustable Speed control valve
Delivering maintenance efficiency.



Reversible rectangular blades
For lower maintenance cost.



Hardened teeth
High spec. materials for enhanced durability.



Trunnion type cylinder
For maximum break out force throughout jaw closing motion as opening motion from FP22 and bigger.

Feature & Benefits

4 different models

- 13-36 tons Models are available.

Trunnion-supported type cylinder

- Offers high breaking forces throughout the entire working cycle as well as stable movement.

Adjustable Speed control valve with cylinder

- Maximum maintenance efficiency and working speed.

Customized Blades and Tooth System

- Optimized tooth arrangement.
- Fully replaceable rectangular blades and bolting tooth.

High grade material composition for better durability

- Used HB360-600 grade material on replaceable parts.

Model		FP14	FP22	FP25	FP34
Carrier weight	t	13~20	16~25	20~28	28~36
Operating weight	kg	1,100	1,375	1,890	2,745
Overall length	mm	1,656	1,985	2,206	2,388
Jaw width (Fixed/ Moving jaw)	mm	384/330	438/350	470/346	532/370
Max jaw opening	mm	680	732	889	1,061
Max. operating pressure	bar	350	350	350	350
Crushing force (Tip)	t	51	54	64	78
Cutter blade Length	mm	240	240	360	360
Required oil flow	lpm	100~180	150~250	150~250	200~300
Speed control valve		-	●	●	●
Bolting tooth		-	-	●	●

Demolition Attachments

ROTATING CRUSHER

Product



Hardened teeth
High spec. materials for enhanced durability.

Reversible rectangular blades

Increased jaw opening
To crush large sections.

Hydraulic 360° rotation unit
Allowing fast and targeted positioning to materials.

Adjustable Speed control valve
Delivering maintenance efficiency.

Trunnion type cylinder
The entire operation from RC25 and bigger.

Doosan Rotating Crushers are designed for both primary demolition work and secondary concrete reduction. Especially for secondary demolition, it is ideal for breaking out concrete from fixed structure, pulverizing concrete, separating different materials for recycling, cutting reinforced rods and small steel profile, and working with high reach boom.



Feature & Benefits

4 different models

- 13-36 tons Models are available.

Trunnion-supported type cylinder

- Offers high breaking forces throughout the entire working cycle as well as stable movement.

Hydraulic 360° rotation unit

- Limitless rotation for fast and targeted positioning in all conditions.

Adjustable Speed control valve with cylinder

- Maximum maintenance efficiency and working speed.

Customized Blades and Tooth System

- Optimized tooth arrangement.
- Fully replaceable rectangular blades and bolting tooth.

Wider opening jaw

- Easily operates for a large demolition job.

High grade material composition for better durability

- Used HB360-600 grade material on replaceable parts.

Model		RC14	RC22	RC25	RC34
Carrier weight	t	13~16	17~25	20~27	28~36
Operating weight	kg	1,250	1,780	2,300	2,950
Overall Length	mm	1,840	2,078	2,474	2,686
Jaw width (Fixed/Moving jaw)	mm	384/330	438/350	470/346	532/370
Max jaw opening	mm	720	732	925	1,056
Max. operating pressure	bar	350	350	350	350
Crushing force (Tip)	t	51	56	67	78
Cutter blade Length	mm	240	240	360	360
Required oil flow	lpm	100~180	150~250	150~250	200~300
Speed control value		-	●	●	●
Bolting tooth		-	-	●	●

Demolition Attachments

MULTI-PROCESSOR

Doosan Multi-Processors are designed for all demolition sites by inter-changing jaw sets mounted on a single base unit.

- Crushing Jaw set
- Pulverizing Jaw set
- Demolition Jaw set
- Shear Jaw set



Product



Speed control valve
High jaw opening & closing speed.



One pin type jaw mechanism
For enhanced shearing force and working & maintenance efficiency.



Customized tooth type
Welded type or replaceable type available.



Unlimited 360° Hydraulic rotation
With heavy-duty swing gear.



Reversible rectangular blades
For lower maintenance cost.
User friendly blade clearance
Adjustment by using one set of adjust nut.

Feature & Benefits

2 different models

- 20-36 tons models are available.

Unlimited 360° Hydraulic rotation

- Limitless rotation for fast and targeted positioning in all conditions.

Integrated Speed up valve with cylinder

- Maximum maintenance efficiency and working speed.

Customized Blades and Tooth System

- Fully replaceable rectangular blades and bolting tooth.
- User friendly blade clearance.

One pin type jaw mechanism

- Enhanced Crushing and shearing force.

High grade material composition for better durability

- Used HB360-600 grade material on replaceable parts.

Various jaw options

- Suitable for all kinds of job application at maximum versatility.



Crushing



Demolition



Pulverizing



Shearing

Model		MP22				MP34			
Carrier weight	t	20 ~ 28				28 ~ 36			
Jaw type		C	D	P	S	C	D	P	S
Operating weight	kg	2,040	2,050	2,210	1,880	3,030	3,001	3,130	2,990
Overall length	mm	2,326	2,291	2,342	2,175	2,533	2,565	2,563	2,553
Overall width	mm	1,438	1,368	1,508	1,083	1,648	1,560	1,643	1,332
Max. jaw opening	mm	903	797	893	503	1,119	983	1,008	573
Cutter blade length	mm	237	355	237	348	240	461	240	563
Required oil flow	lpm	150 ~ 250				200 ~ 300			
Max. operating pressure	bar	350				350			
Crushing force (tip)	t	68	70	64	80	95	101	103	104
Standard features									
Hyd. swivel motor		●				●			
Speed control valve		●				●			

1) Total weight including speed control and hydraulic rotation, but excluding mounting adapter, hydraulic hoses, fitting and mounting pins.

2) The maximum length excluding mounting adapter with jaws fully closed (or opened)

*Materials and specifications are subjected to change without prior notice.

Demolition Attachments

STEEL SHEAR

Product



A Large diameter rotating bearing
Utilizes 2 rows of ball bearings giving maximum durability.



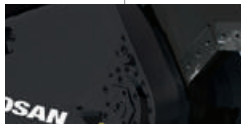
Main Blade
It is reversible.
Bolt-on HARDOX400 Material.



Offset jaw
Apex for optimum shear power.



Top cover
Makes cylinder and speed control valve maintenance easier.



Guide slide & puck system
Reduces jaw stress and helps to eliminate jamming.

Doosan Steel Shears are designed for cutting general and heavy duty steels such as section bars, pipes, and steel structures.



Feature & Benefits

2 different models

- 18-50 tons models are available.

Unlimited 360° Hydraulic rotation

- Limitless rotation for fast and targeted positioning in all conditions.
- A large diameter rotation bearing utilizes 2 rows of ball bearings giving maximum durability.

Customized design for easy maintenance

- Top cover for speed control valve and cylinder.
- Blade clearance adjuster for keeping the performance optimally.

Excellent jaw section

- Use of HARDOX400 material makes it durable.
- Interchangeable main blade and Bolt-on special material wearing tip.

Guide slide and puck system

- Reduces Jaw stress.
- Helps to eliminate jamming.

A large bore hydraulic cylinder

- Provides superior cutting force and cycle time.

Model			SS34	SS48
Carrier weight	without Arm	t	18~25	30
	with Arm	t	28~38	40~50
Operating weight		kg	3,200	4,586
Overall length (L)		mm	3,099	3,424
Overall height (H)		mm	1,250	1,289
Overall width (C)		mm	650	987
Max. jaw opening (A)		mm	581	706
Max. jaw depth (B)		mm	555	626
Max. force at		t		
Point A (Outer tip)			127	160
Point B			234	311
Point C			460	626
Oil flow		lpm	200~300	280~360
Max. operating pressure		bar	350	350
Jaw cycle time (at Q _{normal})			(at 250 l/min)	(at 250 l/min)
	Opening	sec	4	2
	Closing	sec	3.8~7.3	2.6~4.8
1 Cycle		sec	7.3~10.8	4.9~7.1
Max. oil flow for rotation		lpm	24	24
Max. pressure for rotation		bar	140	140
Max. rotation speed		rpm	15	15
Rotating angle			360° continuous	360° continuous

Material Handling Attachments

MULTI-GRAPPLE

Doosan Multi-Grapples are designed for selective demolition, sorting of recyclable material and loading of various materials.



Product



Double motor system
Stable operation and motor protection.



Stopper
Is located on the body and reduces the cylinder when grapples are opened.



Bottom plate of body change
Protects against foreign particles penetrating body by using HARDOX360HBN.



Reinforced jaw
Using HARDOX400HBN.

Feature & Benefits

5 different models

- 4-38 tons models are available.

Unlimited 360° Hydraulic rotation

- Limitless rotation for fast and targeted positioning in all conditions.

Customized design for easy maintenance and repairing reinforced jaw used

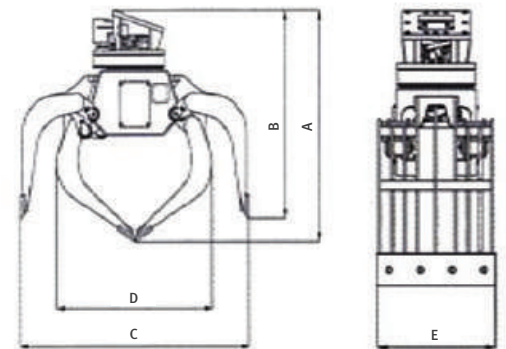
- Use of HARDOX400 material makes it durable.
- Bolt-on blade.

Strong pin stopper

- 4 Stoppers applied for cylinder protection.

Customized design for stable operation

- 2 cylinders applied. (MG14 and larger)
- Double motor system.

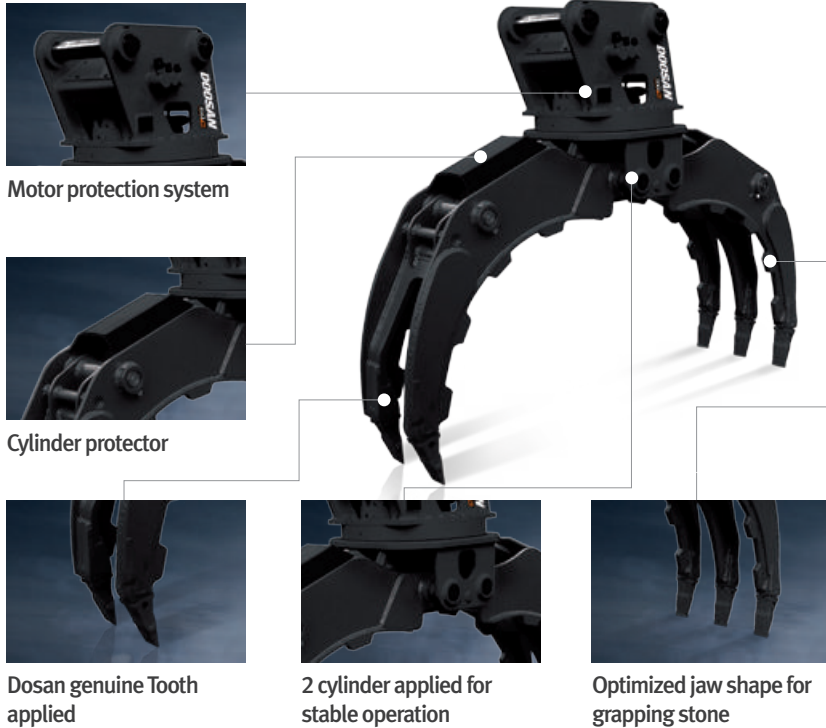


Model		MG05	MG08	MG14	MG22	MG34
Carrier weight	t	4~8	7~10	11~16	18~25	25~38
Number of cylinder		1 EA	1 EA	2 EA	2 EA	2 EA
Operating weight	kg	411	550	1,050	1,423	2,275
Capacity	liter	230	230	450	750	1,100
Jaw opened height (A)	mm	1,162	1,303	1,340	1,548	1,609
Jaw closed height (B)	mm	1,292	1,447	1,433	1,678	1,777
Jaw opened length (C)	mm	1,533	1,736	1,744	2,044	2,350
Jaw closed length (D)	mm	1,042	1,186	1,273	1,536	1,663
Jaw width (E)	mm	600	700	900	1,000	1,250
Operating pressure	bar	300	300	350	350	350
Required oil flow	lpm	20~60	20~60	40~80	60~120	80~160
Max. closing Force	t	2.5	3.2	4.6	5.7	9.2

Material Handling Attachments

STONE GRAPPLE

Product



Doosan Stone grapple is designed for transporting or loading stone, scarp, garbage, demolition debris and waste paper in forestry, recycling, landscaping and general construction sites.



Feature & Benefits

10 different models

- 5-45tons models are available.

Unlimited 360° Hydraulic rotation

- Limitless rotation for fast and targeted positioning in all conditions.

Oil flow control valve

Enclosed cylinder check valve for safety

- Prevent to drop of holding material.

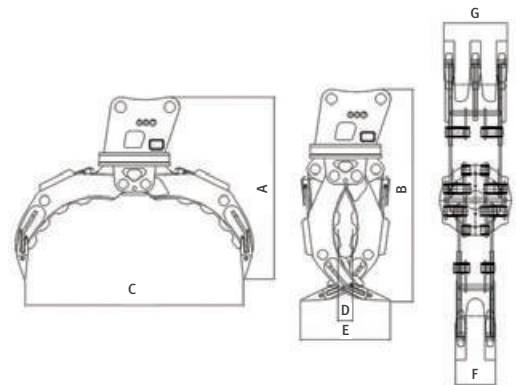
Large hydraulic cylinder and swing bearing

- Provide superior grasping force.
- Enhanced durability.

High grade material composition for better durability

- Used wear resistant special solid steel (API70 & AR500 from POSCO)

Motor protection mechanism applied.



Model		SG05	SG08	SG14	SG18	SG22	SG25	SG30	SG34	SG42	SG50	
Carrier weight	t	5	7	14	18	20	24	30	33	38	45	
Operating weight	kg	360	450	800	890	1,470	1,550	1,850	1,950	2,400	2,550	
Jaw opened height (A)	mm	1,275	1,410	1,760	1,780	2,150	2,195	2,325	2,335	2,445	2,545	
Jaw closed height (B)	mm	1,095	1,240	1,515	1,535	1,885	1,925	2,055	2,065	2,165	2,165	
Jaw opened length (C)	mm	1,325	1,400	1,800	1,800	2,300	2,300	2,485	2,485	2,500	2,700	
Jaw closed inner length (D)	mm	85	115	120	120	120	120	130	130	130	150	
Jaw closed outer length (E)	mm	445	585	740	740	1,240	1,240	1,380	1,380	1,380	1,300	
Inner jaw width (F)	mm	260	260	330	330	415	415	465	465	495	500	
Outer jaw width (G)	mm	410	410	525	525	635	635	745	745	785	855	
Pincer	Operating pressure	bar	180~210	180~210	190~230	190~230	190~250	190~250	220~300	220~300	220~300	220~300
	Required oil flow	lpm	40~60	40~60	90~110	90~110	100~180	100~180	120~200	120~200	150~220	150~220
Rotating	Operating pressure	bar	130~150	130~150	140~160	140~160	150~170	150~170	150~170	150~170	150~170	150~170
	Required oil flow	lpm	30~50	30~50	40~60	40~60	40~60	40~60	40~60	40~60	40~60	40~60

※ The specifications are subject to change without prior notice for improvement of quality.

WOOD GRAPPLE

Doosan Wood grapple is mainly designed for loading or unloading logs in forestry loading dock and lumberyard.



Product

Link type(STD)



Link type for general excavator



2 Cylinder applied for individual jaw operation



Optimized jaw shape for grapping logs



1 Joint pin system



Model		WG05		WG08		WG14	
Linkage type(Link / Pendulum)		L	P	L	P	L	P
Carrier weight	t	5		7		14	
Operating weight	kg	340	280	430	340	780	630
Jaw opened height (A)	mm	880	940	1,165	1,210	1,495	1,570
Jaw closed height (B)	mm	1,305	1,370	1,605	1,660	1,935	2,010
Jaw opened length (C)	mm	1,060	1,060	1,400	1,400	1,800	1,800
Jaw closed inner length (D)	mm	65	65	135	135	125	125
Jaw closed outer length (E)	mm	570	570	645	645	805	805
Inner jaw width (F)	mm	230	230	255	255	310	310
Outer jaw width (G)	mm	415	415	430	430	440	440
Pincer	Operating pressure	180~210		180~210		190~230	
	Required oil flow	40~60		40~60		90~110	
Rotating	Operating pressure	130~150		130~150		140~160	
	Required oil flow	30~50		30~50		40~60	

Feature & Benefits

Pendulum type



Cylinder Protector



Pendulum type (Optional)

8 Different models

- 5-34tons models are available.

Unlimited 360° Hydraulic rotation

- Limitless rotation for fast and targeted positioning in all conditions.

Oil flow control valve

Enclosed cylinder check valve for safety

- Prevent to drop of holding material.

Large hydraulic cylinder and swing bearing

- Provide superior grapping force.
- Enhanced durability.

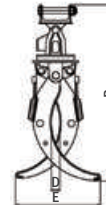
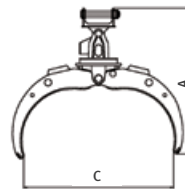
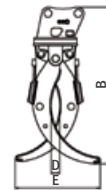
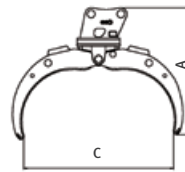
Motor protection mechanism applied.

High grade material composition for better durability

- Used wear resistant special solid steel

Jaw and linkage option for job application

- Link type (STD.) / Pendulum type.



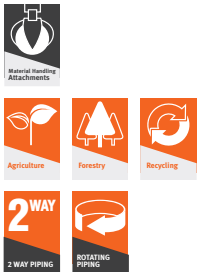
WG18		WG22		WG25		WG30		WG34	
L	P	L	P	L	P	L	P	L	P
18		20		24		30		33~35	
820	630	1,450	1,190	1,510	1,220	1,820	1,580	1,850	1,620
1,620	1,780	1,900	2,000	1,990	2,075	2,060	2,160	2,115	2,235
2,120	2,290	2,340	2,440	2,420	2,555	2,500	2,600	2,595	2,685
1,800	1,800	2,300	2,300	2,300	2,300	2,500	2,500	2,500	2,500
125	125	150	150	150	150	170	170	170	170
805	805	1,340	1,340	1,340	1,340	1,480	1,480	1,480	1,480
310	310	370	370	370	370	425	425	425	425
440	440	570	570	570	570	665	665	665	665
190~230		190~250		190~250		220~300		220~300	
90~110		100~180		100~180		120~200		120~200	
140~160		150~170		150~170		150~170		150~170	
40~60		40~60		40~60		40~60		40~60	

※ The specifications are subject to change without prior notice for improvement of quality.

Material Handling Attachments

LOG GRAPPLE

Doosan log Grapple is specially designed for sorting, loading, unloading and laying timber, log and wood with Doosan Log loader in forestry.



Product

Pendulum type(STD)



Premium linkage for Asymmetric



1 Cylinder applied for synchronized operation



Cylinder protector



Bottom plate for main parts operation



Model			LG05		LG08		LG14	
Linkage type(Link / Pendulum)			L	P	L	P	L	P
Carrier weight	t		4~6		7~10		11~15	
Operating weight	kg		270	250	320	290	550	500
Jaw closed height (A)	mm		1,040	1,040	1,050	1,050	1,450	1,290
Jaw opened height (B)	mm		1,285	1,285	1,500	1,500	1,800	1,600
Jaw closed length (C)	mm		845	1,115	870	1,135	1,380	1,385
Jaw opened length (D)	mm		1,310	1,580	1,325	1,595	1,915	1,865
Jaw width (E)	mm		485	485	505	505	625	625
Jaw width (F)	mm		425	425	435	435	545	545
Pincer	Operating pressure	bar	180~210		180~210		180~210	
	Required oil flow	lpm	40~60		40~60		90~110	
	Operating pressure	bar	130~150		130~150		140~160	
Rotating	Required oil flow	lpm	30~50		30~50		40~60	

Feature & Benefits

Link type



Optimized jaw shape for holding small object



Link type (optional)

8 Different models

- 5-34tons models are available.

Unlimited 360° Hydraulic rotation

- Limitless rotation for fast and targeted positioning in all conditions.

Oil flow control valve

Enclosed cylinder check valve for safety

- Prevent to drop of holding material.

Wider opening and narrow closing jaw

- Easily operates for grapping a small single log.

Large hydraulic cylinder and swing bearing

- Provide superior grapping force.
- Enhanced durability.

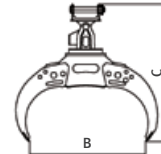
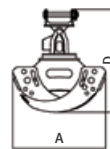
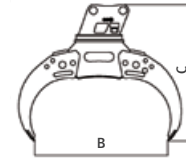
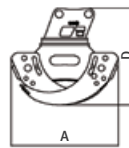
High grade material composition for better durability

- Used wear resistant special solid steel

Motor protection mechanism applied.

Jaw and linkage option for job application

- Link type (STD.) / Pendulum type.



LG18		LG22		LG25		LG30		LG34	
L	P	L	P	L	P	L	P	L	P
16~18		19~24		25~28		29~32		33~35	
600	590	1400	1,270	1,490	1,350	1,850	1,700	1,900	1,750
1,450	1,290	1,610	1,490	1,610	1,490	1,855	1,615	2,015	1,830
1,800	1,600	2,000	1,850	2,000	1,850	2,300	2,000	2,500	2,200
1,410	1,560	1,500	1,675	1,550	1,725	1,685	1,790	1,775	1,920
1,945	2,040	2,095	2,225	2,145	2,275	2,370	2,385	2,520	2,700
625	625	805	805	805	805	900	900	915	915
545	545	710	710	710	710	800	800		
180~210		190~220		190~220		190~220		190~220	
90~110		100~180		100~180		120~200		120~200	
140~160		150~170		150~170		150~170		150~170	
40~60		40~60		40~60		40~60		40~60	

Material Handling Attachments

ORANGE GRAPPLE

Doosan Orange grapples are designed for handling scrap iron and waste.



Product



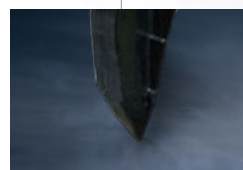
Tine

High strength abrasion resistant steel for long life.



Protectors

All hydraulic parts specially protected.



Tooth point

Replaceable tine tips.



Relief valve

Adjustable maximum closing force to protect structure and cylinders.

Feature & Benefits

6 different models

· 14-52 tons Models are available.

Uses High strength and abrasion resistant steel

Highly qualified hydraulic parts for stability

Simple structure for ease of maintenance

Optimized tine shape for high efficiency

Various options for customer satisfaction

- Tooth Point : Exchangeable Tooth / Welded on tooth made of HARDOX500
- Tine type : Fully Closed / Half Closed / Opened
- Numbers of Tines : 5



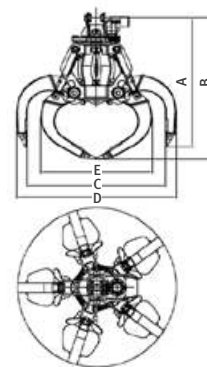
Fully closed



Half closed



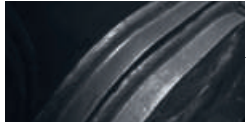
Opened



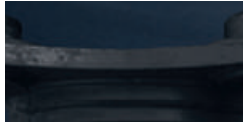
Model		OG14	OG22	OG30	OG34	OG42	OG50
Carrier weight	t	14	18 ~ 25	30	34	42	48~52
Operating weight	kg	1,170	1,300	1,700	2,000	2,080	2,500
Capacity	m ³	0.3	0.5	0.6	0.72	0.8	0.97
Jaw opened height (A)	mm	1,370	1,840	1,980	2,100	2,100	2,200
Jaw closed height (B)	mm	1,490	2,090	2,200	2,300	2,350	2,460
Jaw opened inner length (C)	mm	1,630	1,880	2,000	2,300	2,250	2,480
Jaw opened outer length (D)	mm	1,890	2,150	2,290	2,615	2,600	2,770
Jaw closed length (E)	mm	1,360	1,450	1,500	1,730	1,750	1,810
MOTOR	Required oil flow	lpm	16	16	27	26	26
CYLINDER	Operating pressure	bar	280	280	280	280	280
	Cylinder close oil flow	lpm	149	156	196	201	201

Connecting Attachments HYDRAULIC QUICK COUPLER

Product



Strong and regular weld
Increasing durability.



Thick steel
For Longer lifetime.



2-way pin hole



A lifting hook
Wear resistant material.



Manual safety pin



Optimized design for Doosan excavators
Reduces breakout force impact.

Doosan Hydraulic Quick Couplers allow you to increase the versatility of your excavators. DXQs will help you gain in productivity and efficiency with increased safety.



Feature & Benefits

7 different models

- 5-52 tons Models are available.

Convenience

- Helps to change various attachment easily.

Robust design

- An enhanced welding structure, reducing torsion stress and increasing coupler lifetime.

Bucket reversibility

- When such reverse shoveling is required.

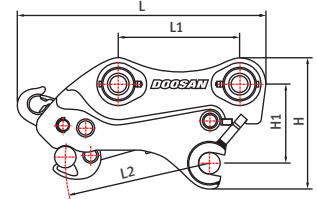
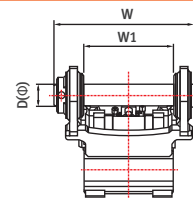
A lifting hook with safety clip

- For lifting and carrying materials.

Manual safety pin

- Prevents unsafe release of attachments.

Ease of maintenance



Model		DXQ55S	DXQ140S	DXQ210S	DXQ300S	DXQ340S	DXQ420S	DXQ480S
Carrier weight	t	5~6	14	21~22	30~31	34~38	40~42	47~52
Operating weight	kg	65	195	335	510	680	820	870
Length (L)	mm	578	805	904	1,031	1,116	1,096	1,150
Height (H)	mm	287	387	485	550	640	640	657
Width (W)	mm	257	411	508	594	642	683	716
Distance (L1)	mm	260	395	460	510	550	535	585
Distance (L2)	mm	255~300	374~440	440~523	470~602	542~625	520~630	555~650
Height (H1)	mm	175	232	285	332	390	390	390
Width (W1)	mm	155	260	332	396	408	442	470
Diameter (Ø)	mm	45	65	80	90	100	110	120

Earth Moving Attachments

CLAMSHELL BUCKET

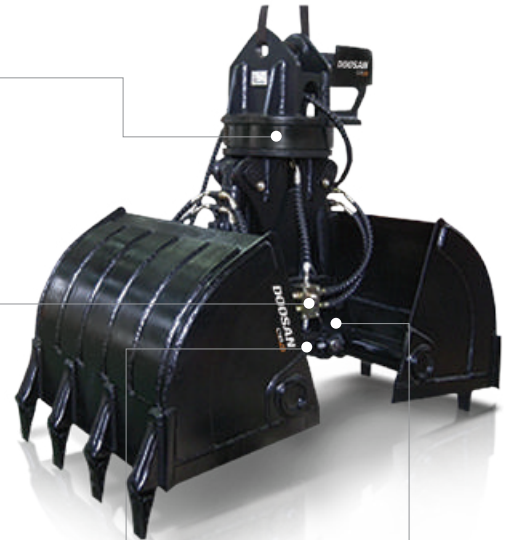
Doosan Clamshell buckets are designed for handling industrial waste, rock, sand, grain, or cereal.



Product



Optional Rotating system
Manual Rotation.
Hydraulic Rotation.



Stable Relief Valve
Adjustable maximum closing force to protect structure and cylinders.



Oversized Pins with bronze bushings
Increases durability for long life.



Synchronous Link System
For synchronizing bucket's moving.



Feature & Benefits

8 different models

- 14-52 tons Models are available.

Great performance with two vertical cylinders

Uses HARDOX400BHN on wear parts

Highly qualified hydraulic parts for stability

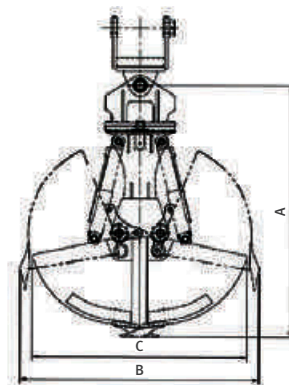
Various options for customer satisfaction

- Rotating system : Hydraulic Rotation / Manual rotation

- Bucket type : Sand bucket without tooth



General Purpose bucket with tooth



Model		CB14	CB18	CB22	CB25	CB30	CB34	CB42	CB50	
Carrier weight	t	14	18	22~25	30	34	42	48~52		
Operating weight	kg	900	1,200	1,440	1,560	1,920	2,040	2,220	2,280	
Bucket capacity	m ³	0.37	0.7	0.8	1	1.4	1.5	1.55	1.7	
Overall height (A)	mm	1,950	1,950	2,148	2,148	2,318	2,318	2,544	2,544	
Bucket opened length (B)	mm	1,868	1,868	2,080	2,080	2,135	2,135	2,385	2,385	
Bucket closed length (C)	mm	1,455	1,455	1,725	1,725	1,985	1,985	2,385	2,385	
Bucket width (D)	mm	600	1,100	900	1,100	1,300	1,400	1,100	1,200	
MOTOR	Required oil flow	lpm	16	16	16	16	27	27	26	26
CYLINDER	Operating pressure	bar	280	280	280	280	280	280	280	280
	Cylinder close oil flow	lpm	78	78	95	95	118	118	167	167

Earth Moving Attachments

PLATE COMPACTOR

Product



Oil bath type

Compaction weight chamber is filled with gear oil, thus, it eliminates periodical greasing & oil changing interval is reduced.



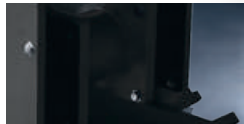
Durable frame design

Durability of main body is increased by flat and solid frame.



Stopper

Limits excessive pressing force from excavator.



Wider cushion rubber for PC05

Increases the durability of cushion rubber.

Doosan Plate Compactors are designed for soil compaction in trenches, foundations, or slope applications. Its heavy-duty design offers a variety of application such as piling, compacting and etc..



Feature & Benefits

5 different models

- 4-40 tons models are available.

Oil bath type

- Compaction weight chamber is filled with gear oil.
- Periodical greasing & oil changing interval is 1 year.

Heavy duty gear motor

- Prevents damage caused by pressure shock during start-up and shut-down.

Cushion rubber

- Protect machine and operator from vibrations.

Single hose block

- All hoses are routed within the frame and connected to a mono hose block.
- Keeps the hoses from damage.

Self-aligning bearing

- Provides a long service life to rotating components.

Customized design for easy maintenance

- All grease fitting are located for easy access.

Model		PC05 Narrow (Standard)	PC08	PC14	PC22	PC34
Carrier weight	t	4~6	6~10	11~16	17~25	26~40
Impulse force	t	2.1	4	6.4	11.2	17.3
Operating weight	Adapter mount type	kg	260	430	689	1,094
	Adapter mount type	mm	650	640	750	840
Height (H)	Direct mount type	mm	695			
	Width (W)	mm	320	610	740	860
	Dimension	mm	320 x 745	610 x 900	740 x 1,050	860 x 1,200
Base plate (WxL)	Compaction area	m	0.24	0.55	0.78	1.03
	Required oil flow	lpm	45~65	50~120	80~170	110~200
	Max. cycle per minute	rpm	2,100	2,000	2,000	2,000
Operating pressure	Free load	bar	30~50	30~50	30~50	30~50
	With load	bar	100~220	100~138	100~138	100~138

Earth Moving Attachments

PILE DRIVER

Doosan Pile driver Contain a system of counter-rotating eccentric weights, powered by hydraulic motors, and designed in such a way that horizontal vibrations cancel out, while vertical vibrations are transmitted into the sheet pile, H-beam, tube and steel.



Product

General type



Unlimited 360° Hydraulic rotation



Hydraulic motor



Optimized impulse and clamping power



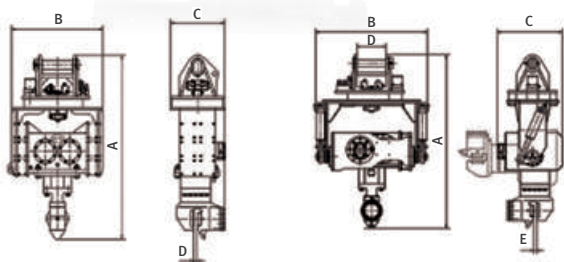
90° tilting operation system



		PD25		PD30
Type (General / Tilting)		G	T	G
Carrier weight	t	20~28		29~35
Operating weight (Main Body)	kg	1,530	1,910	1,850
Height (A)	mm	1,944	2,100	2,050
Length (B)	mm	1,020	1,320	1,080
Width (C)	mm	600	762	650
Upper pin (D)	mm	345		345
Clamping Jaw (E)	mm	35		40
Frequency	Vpm	3,000		2,700
Centrifugal Force	kN	300		390
Amplitude	mm	6.8		7.2
Max. hydraulic pressure	bar	250		250
Oil quantity	l/min	180		220
Extension boom		Short Boom		Standard Boom
Operating weight	kg	550		590
Height (A)	mm	110		120
Length (B)	mm	240		290
Width (C)	mm	65		70

Feature & Benefits

Tilting type



General type

Tilting type

9 different models

- 23-45tons models are available.

Noiseless high frequency vibration Technology

- Utilized 2700rpm high frequency vibration.
- Be highly efficient in construction site in center of a city, downtown and residential area. (Approx. 52~70dB)

Unlimited 360° Hydraulic rotation

- Limitless rotation for fast and targeted positioning in all conditions.

Excellent performance without power pack

Special patent elastomer cushions

- Protect a machine from vibration.

High grade material composition for better durability

- Used HARDOX on body plate.
- Specially designed bearing for high frequency vibration.

Optimized impulse and clamping power

90° tilting operation system (Tiling type)

- Easily controlled without additional assistant.
- Maximized performance and productivity.

Extension Boom is available. (Optional)

- Offer higher Height.
- Support to set the position easily.

Hooking-up wire for safety Optional

PD34		PD42		PD50-T
G	T	G	T	T
	29~38		36~45	45~55
1,910	2,050	1,980	2,560	2,700
2,100		2,205	2,380	2,380
1,363		1,455	1,460	1,484
757		770	780	780
345			345	345
40			40	40
2,750			2,700	2,700
500		570	560	680
8.8			14	16
270			270	270
220			280	280
Standard Boom		Long Boom		Long Boom
590		630		630
120		120		120
290		340		340
70		70		70

Earth Moving Attachments

RIPPER

Doosan Rippers offer powerful ripping capabilities in hard and compact materials such as compact soil, rock, ice, caliche, tarmac, paved areas.



Product



Suitable design

Best fit for Quick-Coupler or Pin On mounting.



Extra thick steel shank
Increases the strength of the ripper.



High wear resistance with high quality steel for longer lifetime



GET replaceable wear items
Easily replaced with horizontal pin lock system.

Feature & Benefits

7 different models

· 5~52 tons Models are available.

Proven and durable design

· Reduces torsion stress.
· Perfect penetration angle.

Extra thick steel shank

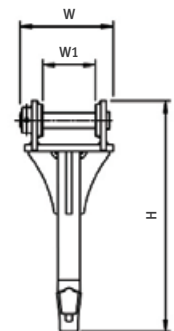
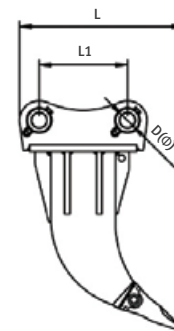
· Increases the strength of the ripper, while reducing the stress on the excavator.

High wear resistance steel

· Keeps longer lifetime.

Easy maintenance

· GET wear items easily replaced with horizontal pin lock system.



Model		RP5	RP14	RP22	RP30	RP34	RP42	RP48
Carrier weight	t	5~6	14	21~22	30~31	34~35	42	48~52
Operating weight	kg	102	245	450	587	740	760	804
Heights (H)	mm	683	1,057	1,278	1,298	1,620	1,620	1,640
Length (L)	mm	484	749	936	969	1,015	1,007	1,032
Length (L1)	mm	260	395	465	510	550	535	585
Width (W)	mm	260	363	506	605	650	660	701
Width (W1)	mm	155	260	334	396	410	442	472
Diameter (Ø)	mm	45	65	80	90	100	110	120

Earth Moving Attachments

VIBRATING RIPPER

Product



Oil rotation power system



Patent elastomer cushions



Durable Tooth and pin



High frequency vibration Technology

Doosan vibrating ripper is designed for breaking or ripping veined, cracked and soft rock such as sandstone shale, coal, gypsum, concrete, slate, limestone and basalt by generating high frequency vibration shock.



Feature & Benefits

7 different models

- 5-52 tons models are available.

Noiseless high frequently vibration Technology

- Utilized 2700rpm high frequency vibration.
- Be highly efficient in construction site in center of a city, downtown and residential area. (Approx. 52~70dB)

Oil rotation power system

- Increased lifetime of parts.

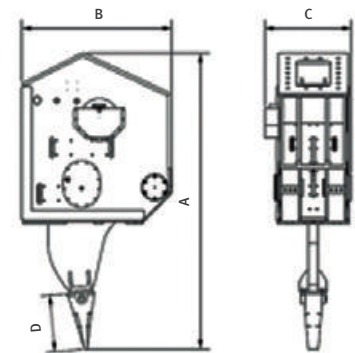
Patent elastomer cushions

- Protect a machine form vibration.

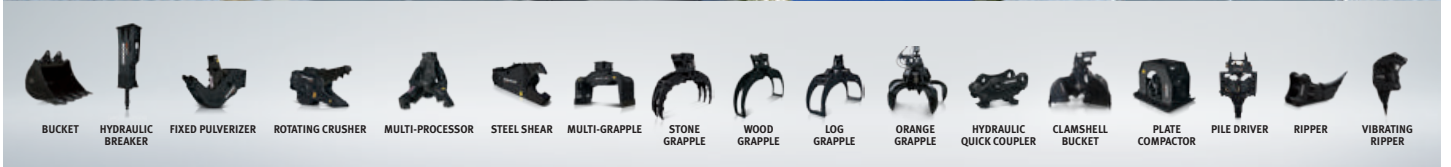
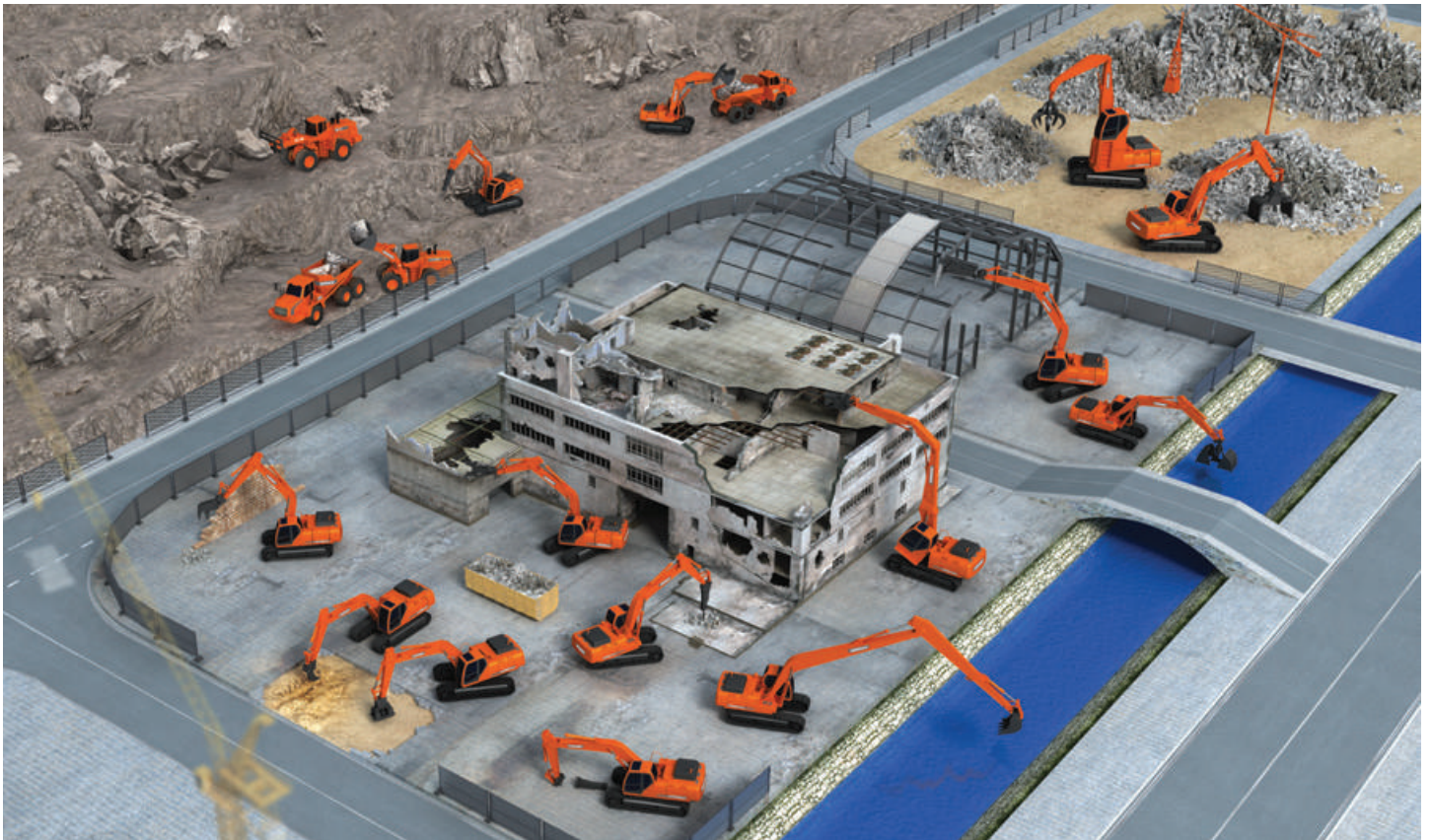
High grade material composition for better durability

- Used HARDOX on body plate.
- Used Wear-resistance material on tooth and pin.

Easy installation and maintenance

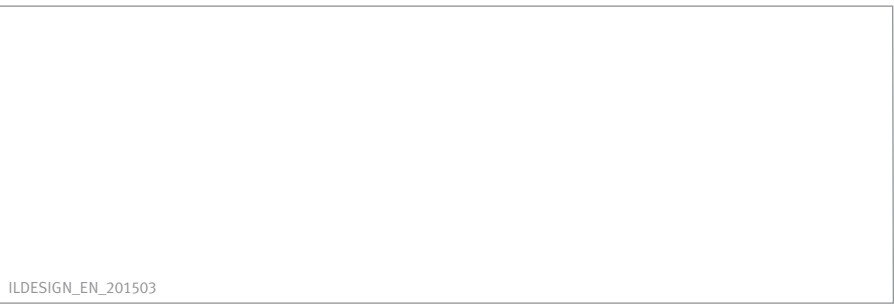


Model		VR14	VR22	VR34	VR42	VR50
Carrier weight	t	12~17	18~27	28~35	36~42	43~55
Operating weight	kg	1,300	1,900	2,460	3,760	4,360
Height (A)	mm	1,770	2,316	2,448	2,912	3,018
Length (B)	mm	1,030	1,095	1,152	1,440	1,486
Width (C)	mm	760	806	825	913	928
Tooth (D)	mm	265	470	470	470	575
Frequency	Vpm	1,700	2,500	2,500	1,700	1,700
Max. hydraulic pressure	bar	250	250	250	250	250
Oil quantity	l/min	100~120	150~170	180~200	260~280	290~310



Doosan worldwide factories

- Heavy Equipment Factory
- Compact Equipment Factory
- Attachment Factory



Doosan Infracore Korea Office (HQ)
 27/F, 275, Jangchungdan-ro, Jung-gu, Seoul, Korea
 Tel : 82 2 3398 8114

www.doosaninfracore.com/ce/