







BOGBALLE A/S. Who we are.

We are one of the world's leading manufacturers of salt and sand spreaders.

Manufacturing large numbers of fertiliser spreaders means that our range of salt spreaders can be characterized as a high quality product when it comes to spreading technique, finish and surface treatment protection against a very aggressive environment.

Coated with the strong and flexible powder paint "Flexi Coat" ensures a long working life. Every single component goes through a 7-step cleaning process before painting and assembling.

Result – a highly corrosion resistant and durable coating and moreover a product with excellent spreading precision.





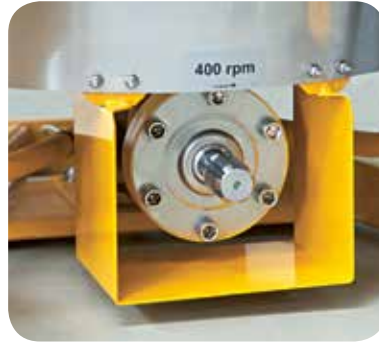
Icy and slippery roads control. How?

The salt spreaders meet a wide range of demands from the salting and gritting roads to parking areas or for very narrow footpaths. The spread material is evenly distributed via centrifugal force from the spreading disc. In this way a quick and effective spread over the total area is achieved. The size of the spreader matches every demand, no matter the size of the Job, tractor or towing vehicle.

Hopper contents from 130-1.050 litres. **Flexi Coat** powder paint, 30 times more durable than traditional wet paint. **Quantity from 5 gram** per m² depending on forward speed and working width. **Stepless quantity setting** with clearly visible scale pointer. **Stepless working width** adjustment from 1-8 metres. **Spreading vanes** in manganese steel – 2-3 times longer durability compared to stainless steel. **Hydraulic, PTO or mechanical** driven spreading system (only S2-Trail).

- 4: S3, 775 litres
- 5: S3 - S2-Trail - S2





S2 and S3. A model for all needs.

A tractor mounted spreader offers quick and efficient working. When linked with our big bag lifter BXL 1300, it is possible to fill the spreader directly on site. This increases the working efficiency by making time for re-filling very short.

The spreading system is driven either via pto shaft or a hydraulic motor. The hydraulic motor only requires 20 litres oil per minute.

- 6: S3 775 litres with BXL 1300
- 7: Pto transmission – filling with BXL 1300 – Oil motor





S2-trail. Simply hitch up and spread.

Our trailed spreader with mechanical drive is ideal for tractors and towing vehicles without a pto or hydraulic system e.g. ATV or smaller garden tractors. The spreading system is driven directly by the spreader wheels from a mechanical transmission.

A rotating agitator in the hopper base moves the material when driving. This ensures an easy start up and reliable function of the spreading system even on slippery surfaces.

The drawbar can easily be adjusted to match the towing vehicle attachment point for quick and easy coupling.

- 8: S2-trail 240 litres
- 9: Engagement /disengagement of spreading system – Rotating agitator and hopper base – Adjustable draw bar





Quantity Setting. Precise Rate.

In the standard version the quantity is adjusted with one single lever, which can be manually operated. Alternatively, optional electrical or hydraulic remote control can be chosen. An electric remote control can also be specified for on-the-move adjustment of the working width.

In addition to icy and slippery road control our salt spreaders can also be used for the maintenance of parks, golf courses playing fields and other green areas.

Spread charts for salt, sand, slug pellets and fertiliser are supplied as standard. Spread charts can also be downloaded from www.bogballe.com.









Complex matters. Simple solutions.

Our maintenance free transmission contains special grease, which is particularly suited for working under very low temperatures. Additionally, PTO-driven spreaders are fitted with a maintenance free, waterproof slip clutch.

The spread width is adjusted manually or electrically from 1 to 8m using the working width guard.

Inside the hopper a “bridge” is mounted to prevent compaction of the material in the hopper base to ensure consistent flow to the spread disc from hopper full to empty. The specially developed agitator with eccentric movement ensures a constant flow of the material in the hopper





Tasks. All year round use.

In addition to treatment of icy and slippery road surfaces or car parks our salt spreaders can also be used for the maintenance of parks, golf courses, playing fields and other green areas.

On golf courses it is ideal for topdressing applications. In addition, in hot conditions when surface tar may melt, it is perfect for spreading of quartz sand on asphalt areas.

For spreading fertiliser for example, the spreader can be equipped with a specially developed agitator for rough material. On areas where high precision spreading is required, we recommend our twin-disc fertiliser spreaders for this purpose.

- 16: S3, 500 litres
- 17: S2, 240 litres – Agitator for rough material – S3, 500 litres

boqbulle CALIBRATOR ICON



MENU ICON FUNCTION

		Calibration Value (kg)
		Define Working Width (M)
	KG / HA	Quantity (1 g/m ² = 10 kg/ha)
		Area Info (1000 m ² = 0,1 ha)
		Open Shutter for Cleaning
		Trim Working Width via Guard

1004-20-02





Intelligent Control. Why?

CALIBRATOR ICON is the intelligent solution for S2 and S3.

The system is extremely useful under circumstances where the speed is often varied, e.g. when spreading on roads with many traffic lights or on narrow footpaths. If the speed is changed, the quantity will remain constant because the rate shutter automatically adjusts up or down. At full stop, the spreader closes automatically. The spread width can also be electrically adjusted wider or narrower “on-the-move” and simultaneously, the rate quantity is kept constant due to automatic adjustment of the outlet.

Operation is by easy to understand icons. To achieve the correct quantity, a calibration value must be entered from the spread chart. The quantity spread is continuously recorded for operation route documentation. The system offers unmatched precision whatever the working width, speed and required quantity in gram/m², for the most cost-effective and environmentally friendly spreading result. Connecting to GPS can automatically prevent spreading twice at the same route!

Speed monitoring is achieved by a speed signal from a standard speed sensor on a wheel hub or a drive shaft, or as shown from the tractor transmission or radar via an ISO 11786 plug.





CALIBRATOR ICON



Quantity, electric remote



Quantity, hydraulic remote



Quantity, cable remote



Working width, electric remote



Module



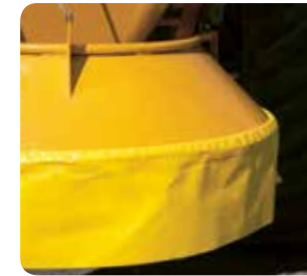
Hopper cover



Reflector boards



Road lights



Skirt – 1 metre working width
(Standard)



Lift pins cat 1 (S3)



Agitator (fertiliser / rough material)



Sieve (Standard)

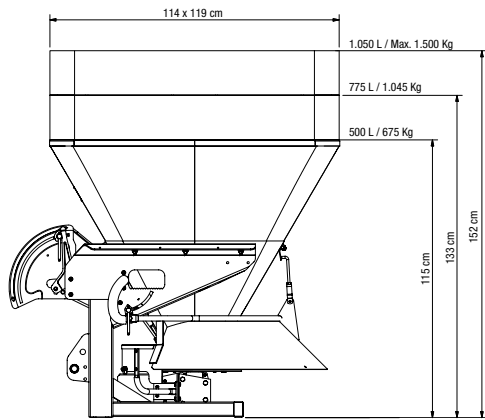


Ball tow hitch (S2-Trail)

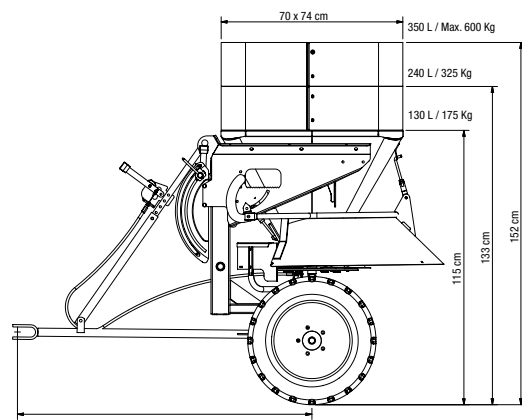


Spike tyre (S2-Trail)

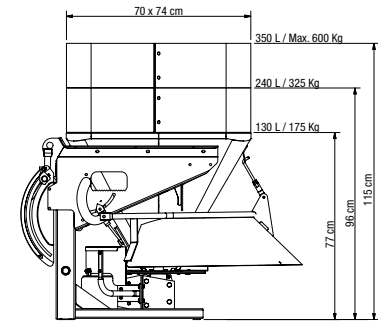
S3



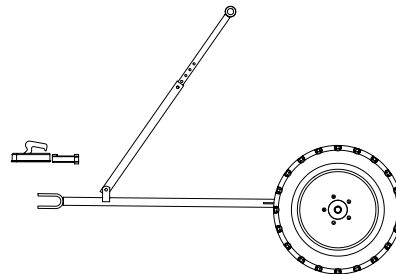
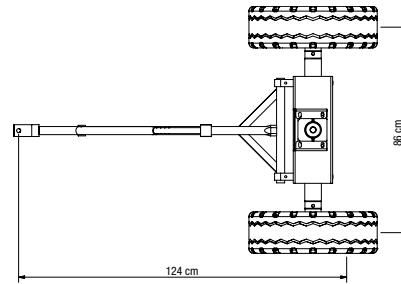
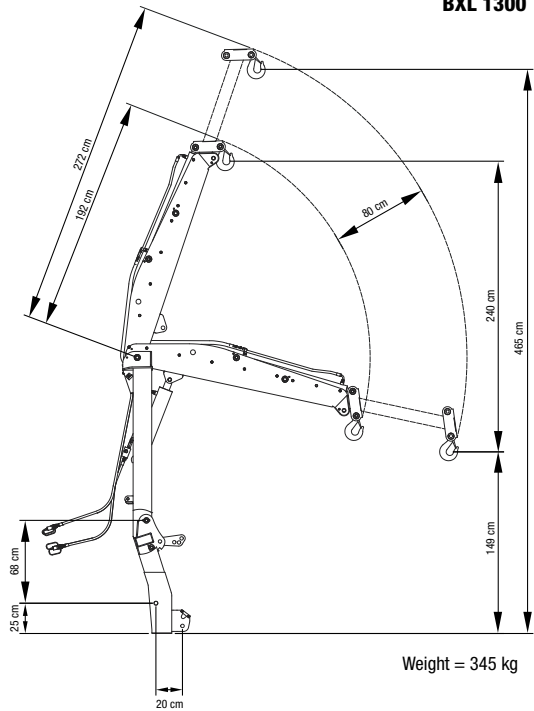
S2-Trail



S2



BXL 1300



Specifications

	S2	S2 hydra	S2-Trail	S3	S3 hydra
Contents (L)	130 / 240 / 350	130 / 240 / 350	130 / 240 / 350	500 / 775 / 1.050	500 / 775 / 1.050
Capacity (max. kg)	175 / 325 / 450	175 / 325 / 450	175 / 325 / 450	675 / 1.045 / 1.600	675 / 1.045 / 1.600
Weight (kg)	118 / 130 / 142	118 / 130 / 142	150 / 162 / 174	166 / 189 / 212	166 / 189 / 212
Total Weight (kg)	293 / 455 / 592	293 / 455 / 592	325 / 487 / 624	841 / 1.234 / 1.812	841 / 1.234 / 1.812
Working width (M)	1-8	1-8	1-4	1-8	1-8
Working Distance (km)*	4,4 / 8,2 / 11,3	4,4 / 8,2 / 11,3	4,4 / 8,2 / 11,3	16,9 / 26,1 / 37,5	16,9 / 26,1 / 37,5

*2 Metres working width and 20 g / m²

Options

PTO shaft	■	-	-	■	-
Hydraulic motor	-	■	-	-	■
Slip clutch	■	-	-	■	-
Agitator (sand/salt)	■	■	■	■	■
Sieve	■	■	■	■	■
Width control	■	■	■	■	■
Hopper Bridge over agitator	-	-	-	■	■
Spread charts	■	■	■	■	■
Quantity (manual)	■	■	■	■	■
Quantity (cable remote)	□	□	□	□	□
Quantity (hydraulic remote)	□	□	□	□	□
Quantity (electric remote)	□	□	□	□	□
CALIBRATOR ICON	□	□	-	□	□
Working width (electric remote)	□	□	□	□	□
Agitator (Fertiliser / rough material)	□	□	□	□	□
Road lights	□	□	□	□	□
Reflectors	□	□	□	□	□
Hopper cover	□	□	□	□	□
Skirt – 1 metre working width	■	■	■	■	■
Link pins cat 1	■	■	-	□	□
Ball tow hitch	-	-	□	-	-
Spike tyre	-	-	□	-	-

- Standard equipment
- Option
- Not available

All BOGBALLE products are subject to continuous development.



Importer:

Dealer:



BOGBALLE A/S · Bogballe · DK-7171 Uldum · www.bogballe.com
Phone +45 7589 3266 · Fax +45 7589 3766 · bogballe@bogballe.com