

RIDING LAWN TRACTORS

100, 200, X300, X500, AND X700 Series



JOHN DEERE

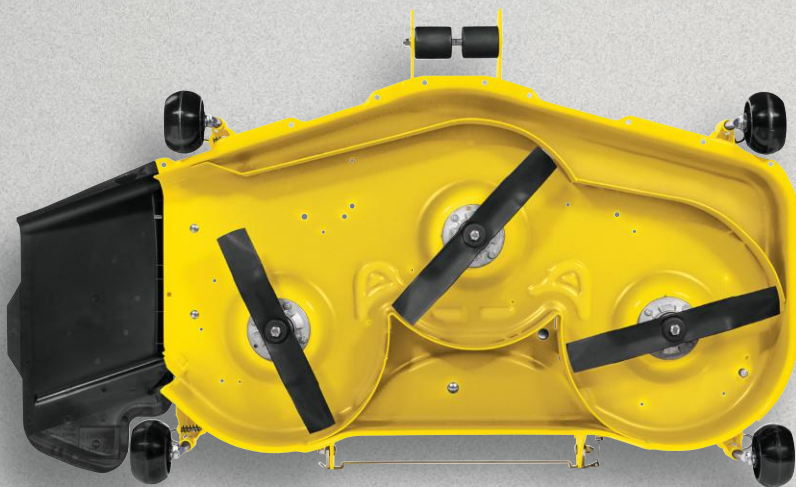


RUN WITH US

RIDING LAWN TRACTORS

Takes the *HARD WORK* out of *LAWN WORK*

Make the most of your mowing, and more. Our lawn tractors handle any job on your to-do list. Haul, plow, bag or mulch—with our range of attachments and options, you can count on a quality cut, all year round. Read on, and discover how you can do more with a John Deere mower.



The Accel Deep[®] mower deck. Dozens of prototypes discarded. Hundreds of hours of simulations and real world testing. This is how to mow well fast.



MulchControl[™] Kit with One Touch Technology. Mulch on. Mulch off. Mulch the easy way with the push of a button. Available with Accel Deep[®] Mower Decks on Select Series Tractors.



Great lawn care has gone high tech. The John Deere MowerPlus™ app helps keep your John Deere riding lawn equipment running well and your lawn looking great. Available at the App Store® or Google Play™** store. US only.



Cutting Height Adjuster. Cutting height can be adjusted in ¼-in. (0.64-cm) increments for a precise, even cut.



Twin Touch System. Twin Touch™ automatic transmission lets you easily change from forward to reverse with two-pedal foot control for effortless speed and direction changes. (Available on Select Series and Signature Series Tractors.)



30-Second Oil Change System

Groundbreaking. We've changed the oil change with the John Deere Easy Change™ 30-Second Oil Change System on select 100 Series models and model Z365R.

*Changing the filter removes the captured contaminants and replaces about 0.8 qt (0.76 L) of engine oil.

X700 SIGNATURE SERIES

Engine – High-performance electronic fuel injected (EFI) gas engines and Final Tier 4 diesel engines offer torque and power to spare.

Optional MulchControl™ Kit – Mulch the easy way—with the flip of a lever.

Steering Wheel – Standard tilt steering adjusts to your height and delivers the ultimate in comfort.



Air Ride Seat Option – Effortlessly adjust the seat suspension to your liking with the flip of a switch.



Stylish Hood – The exclusive design provides superior cooling and durability.

Mower Deck – The 48-in. Accel Deep™ Mower Deck is perfect for narrow pathways and gate entrances, while our 54- and 60-in. high-capacity decks are solid stamped out of 9-gauge steel.

The Dashboard Approach – Electronic fuel gauge. Engine temperature gauge. Tachometer with Best Cut target zone. Electric power take-off (PTO) engagement indicator. All at a glance and within easy reach.

12-Volt Outlet – Plug in a sprayer or an electric spreader.

Tool Box – Storage for work gloves or sunglasses to your favorite hat.



A high-capacity mower deck, solid stamped out of 9-gauge steel to handle the tall stuff.



The Dashboard Approach— Electronic Fuel Gauge. Engine Temperature Gauge. Tachometer with Best Cut Target Zone. An Electric Power Take-Off (PTO) engagement indicator. All at a glance and within easy reach.

THERE'S ALWAYS SOMETHING TO DO AROUND THE YARD.

Productivity and versatility are key to how we run, too. That's why the Signature Series is engineered to till, mulch, haul, bag, plow, fertilize, seed, sweep and, of course, mow. You just need the right attachment or implement.

Adding a 3-point hitch is a great place to start. Put our heavy-duty transmission and thick C-channel frame to the test and take on the toughest yard jobs. That's how we run. Nothing runs like a Deere.

BUMPER-TO-BUMPER **4-YEAR /700-HOUR** **WARRANTY****

**Term limited to 4 years or 700 hours used, whichever comes first, and varies by model. See the LIMITED WARRANTY FOR NEW JOHN DEERE TURF AND UTILITY EQUIPMENT at JohnDeere.com or www.JohnDeere.ca/TUWarranty for details.



With an AutoConnect deck, attaching and removing your mower deck is easier than ever. Drive over ramps can quickly be removed, without tools, for access to mower deck.

X500 SELECT SERIES

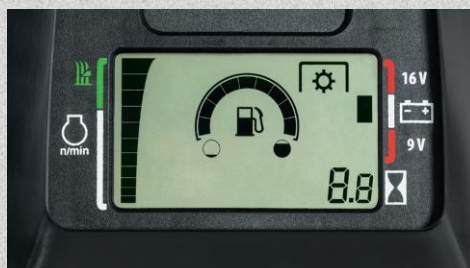


MULTI-TERRAIN AND MULTI-TALENTED.

The X500 Series lets you mow with precision, faster. But a quality cut is just the start of what the tractors can do. Till your garden or mulch your lawn, negotiate steep inclines with complete confidence, and go where you need to go. Heavy-duty frames support heavy-duty work. Increase traction with foot-operated traction control. Add the optional MulchControl Kit to make feeding your lawn a snap.



Accel Deep™ Mower Decks. The deeper “draw” and flat top design create a better quality of cut at faster ground speeds.



Easy-To-Read Display. Displays engine speed and target zone for best cut quality.



Traction Assist. Locks the rear transaxle, so both rear wheels work together with maximum traction. Exceptionally effective at climbing or negotiating muddy ground.



BUMPER-TO-BUMPER 4-YEAR / 500-HOUR WARRANTY

**Term limited to 4 years or 500 hours used, whichever comes first, and varies by model. See the LIMITED WARRANTY FOR NEW JOHN DEERE TURF AND UTILITY EQUIPMENT at JohnDeere.com or www.JohnDeere.ca/TUWarranty for details.

21-in. (53 cm) cut and sewn seat with spring suspension provides a smooth comfortable ride on uneven terrain (Standard on the X580, X584, and X590).

MulchControl™ Kit with One Touch Technology. Available with Accel Deep™ Mower Decks on Select Series Tractors.

Control console. Ergonomic design and color-coded for easy identification.

X590 Electronic Throttle Control. Instantly responds to deliver engine power and eliminate bogging down.

Hydraulic Power Steering. Makes 4-wheel steering even easier and provides excellent maneuverability. 12-inch (30 cm) uncut circle radius on the X584 with 54-in. mower. (Standard on the X580, X584, X590).

Four-wheel steering. All four wheels on the X584 steer the tractor for ultimate trimmability.

iTorque™ Power System. Provides plenty of power and torque for excellent performance in any operating condition.







A CUT ABOVE. AND BEYOND.

Our riding lawn tractors will put yardwork on your GET-to-do list. Because they've been engineered from the deck up to blend performance with remarkable comfort. Features like MulchControl™, Twin Touch foot pedals and four-wheel steering turn big jobs into big fun. And with the ability to plow snow and bag leaves, your tractor will never take a season off.

X300 SELECT SERIES

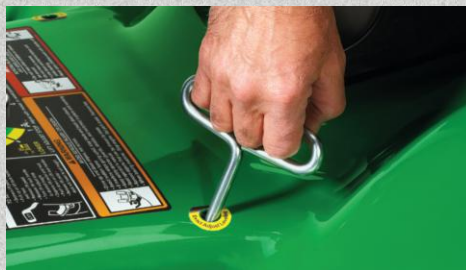


PERFORMANCE MEETS POWER

Get a beautiful cut in a matter of minutes with the X380 lawn tractor. With the comfortable 18-in cut-and-sewn seat standard and optional 48- and 54-inch Accel Deep™ Mower Decks that cut clean, even passes even at faster speeds. Add a Utility Cart to haul away most anything a lawn can throw at you.



Easy-To-Read Display. Displays engine speed and target zone for the best cut quality.



Exact Adjust Deck Leveling System. This exclusive feature allows you to conveniently level the deck from just below the seat.



Twin Touch System. Automatic transmission lets you easily change from forward to reverse with two-pedal foot control.



Four-wheel steering. Designed for ultimate trimmability. All four wheels steer the tractor instead of just the front two. Available on X354, X384, X394.



Rear collection. For the cleanest looking lawns, choose either a bagger attachment or the custom-engineered X350R dedicated rear-bagging tractor.



MulchControl™ Kit with One Touch Technology. Cut grass clippings down to size, so they are easily absorbed in your lawn. Or side discharge or bag.

BUMPER-TO-BUMPER

4-YEAR /300-HOUR

WARRANTY**

**Term limited to 4 years or 300 hours used, whichever comes first, and varies by model. See the LIMITED WARRANTY FOR NEW JOHN DEERE TURF AND UTILITY EQUIPMENT AT JohnDeere.com or www.JohnDeere.ca/TUWarranty for details.

200 SERIES

PREMIUM PERFORMANCE. WITHOUT THE PREMIUM PRICE

The 200 Series comes loaded with everything to make lawn care a labor of love. The comfort of a wide, welcoming operator station and an open, high-back seat. The performance of side-by-side forward and reverse pedals, a rip-roaring V-Twin engine and either 42-in or 48-in Accel Deep™ Mower Deck with optional MulchControl™ Kit. The only thing you maybe won't love? Trying to decide which one's perfect for you.

Comfortable, open-back seat

to capture breezes, keeping you cool.

42-in. (107 cm) and 48-in. (122-cm) Accel Deep™ Mower Decks

S220 comes standard with 42-in. Accel Deep™ and S240 has the option for a 42-in. or 48-in. Accel Deep™ Mower Deck. The deep "draw" and flat top design create a quality of cut at faster ground speeds.

Side-by-side pedals.

for a smooth ride and easy turns.

Large, turf-friendly tires

for a smooth ride and easy turns.

Powerful, smooth running

22 hp* (16.4 kW) and 21.5 hp* (16 kW) premium V-twin engines, the kind you find in our Select Series models.

¼-in. height-of-cut adjustment. Easily adjust for a precision cut.



MulchControl™ Option
John Deere
matches a
a lever.

*The engine horsepower and torque information are provided by the engine manufacturer to be used for comparison purposes only. Actual operating horsepower and torque will be less. Refer to the engine manufacturer's web site for additional information.

BUMPER-TO-BUMPER 3-YEAR / 200-HOUR WARRANTY**

**Term limited to 3 years or 200 hours used, whichever comes first, and varies by model. See the LIMITED WARRANTY FOR NEW JOHN DEERE TURF AND UTILITY EQUIPMENT AT JohnDeere.com or www.JohnDeere.ca/TUWarranty for details.



Easy Read Fuel Gauge At arm's reach. And beyond expectations.

Always be in the know. The easy-read fuel gauge gives confidence in having enough gas to finish the job. The fuel level is easy to see on the dashboard in bright or low light and it won't bounce around while driving. With an optional smart connector installed, the gauge updates the MowerPlus app about the fuel, battery state, and engine hours. Available on S240.



100 SERIES



YOUR LAWN WILL THANK YOU

Built in Greeneville, TN, our 100 Series Lawn Tractors are our affordable, comfortable, easy-to-use lawn tractor line-up. Lift the hood and check out the Easy Change™ 30-Second Oil Change System (not available on the S100, S110 and S140). This all-in-one oil and oil filter* is so easy to take off and put on, you can be done in 30 seconds, max. No mess.

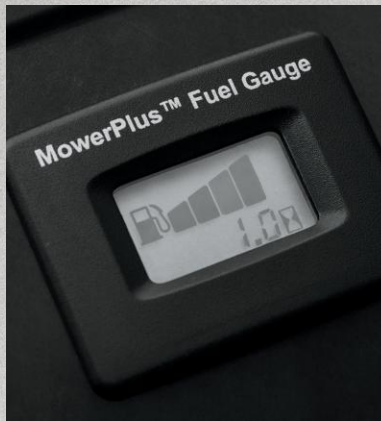
No fuss. No problem. Twist. Lock. Done.

Then step on it. The two side-by-side forward and reverse pedals available on all 100 Series are made for your right foot. Now, sit down. The ergonomic operator station is welcoming. The seat, adjustable. The design of the mower deck lift is even shaped to minimize the effort required to raise or lower the deck. And that's just for starters.





BUMPER-TO-BUMPER
2-YEAR /120-HOUR
WARRANTY**



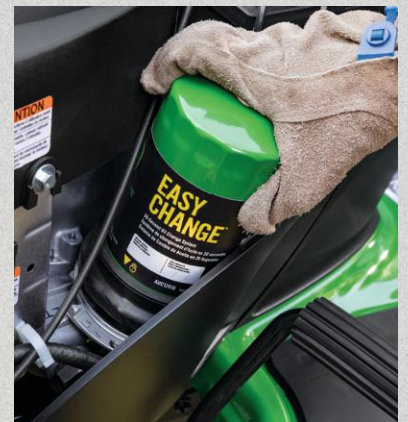
Easy read fuel gauge.
(available on S120, S130, S160, S170 and S180).



15-in lumbar seat.
(available on S160, S170, S180).



Electric PTO.
Available on some models, provides instant engagement of mower blades. (available on all models from S130 and above).



John Deere Easy Change™ 30-Second Oil Change System.
No mess. No fuss. No problem. The oil and oil filter are all-in-one.* Twist. Lock. Done. (available on S120, S130, S160, S170, S180).



The convenient mower deck lift lever.
¼-in. (0.64-cm) height-of-cut increment adjustment is as precise as ever.



Side-by-side pedals.
Easily change from forward to reverse with two-pedal foot control available on all 100 Series Lawn Tractors.

*Changing the filter removes the captured contaminants and replaces about 0.8 qt (0.76 L) of engine oil.

**Term limited to 2 years or 120 hours used, whichever comes first, and varies by model. See the LIMITED WARRANTY FOR NEW JOHN DEERE TURF AND UTILITY EQUIPMENT at JohnDeere.com or www.JohnDeere.ca/TUWarranty for details.

†Assembled with foreign and domestic parts.

ATTACHMENTS

GET READY TO GET ATTACHED.

Keep your John Deere Riding Lawn Tractor busy all year—even when your lawn is covered in snow. Our incredible spectrum of attachments can practically transform your mower in a different machine. Snow blowing, tilling, spreading. If you've got the task, we've got the attachment.



Front Blade. Clear the way and keep it clear.



Rotary Broom. Sweep away all four seasons.



Optional Cat 0 or Cat 13-point hitch. It's the first step to tilling, cultivating and blading.



Rear Blade. Shown with optional iMatch™ Quick-Hitch.



Box Blade. Shown with optional iMatch™ Quick-Hitch.



Blow snow with a Snow Blower all while staying toasting in a Fully Enclosed Cab.



Sun canopy



Utility cart



Spreader. Pull-type spin spreader available in 125lb (57 kg) or 175lb (80kg).



Bagger

Specifications

X730

X734 (4WS)

X738 (4WD)

POWER SYSTEMS

	John Deere iTorque™	John Deere iTorque™	John Deere iTorque™
Engine Power	25.5 hp* (19 kW)	25.5 hp* (19 kW)	25.5 hp* (19 kW)
Displacement	45.5 cu in. (745 cc)	45.5 cu in. (745 cc)	45.5 cu in. (745 cc)
Cooling	Liquid	Liquid	Liquid
Cylinders	V-Twin	V-Twin	V-Twin

FUEL SYSTEM

Capacity	5.2 U.S. gal. (19.7 L)	5.2 U.S. gal. (19.7 L)	5.2 U.S. gal. (19.7 L)
Fuel Type	Gasoline	Gasoline	Gasoline

IGNITION

	Electronic	Electronic	Electronic
Electrical System	20 amp, regulated	20 amp, regulated	20 amp, regulated
Fuel Delivery System	Electronic fuel injection	Electronic fuel injection	Electronic fuel injection

TRANSMISSION

Drive System	Hydrostatic, 2-wheel drive	Hydrostatic, 2-wheel drive	Hydrostatic, Full-time 4-wheel drive
Forward Speed	8.5 mph (13.7 km/h)	8.5 mph (13.7 km/h)	8.5 mph (13.7 km/h)
Reverse Speed	6 mph (9.7 km/h)	6 mph (9.7 km/h)	6 mph (9.7 km/h)

BRAKES

	Internal wet disc	Internal wet disc	Internal wet disc
--	-------------------	-------------------	-------------------

STEERING

	Power, 2-wheel steer	Power, 4-wheel steer	Power, 2-wheel steer
--	----------------------	----------------------	----------------------

TURNING RADIUS

	25 in. (635 mm)	21 in. (533 mm)	25 in. (635 mm)
--	-----------------	-----------------	-----------------

UNCUT CIRCLE RADIUS

	28 in. (711 mm) w/ 60-in. HC Mower	6 in. (152 mm) w/ 60-in. HC Mower	28 in. (711 mm) w/ 60-in. HC Mower
--	------------------------------------	-----------------------------------	------------------------------------

SEAT

	21 in. (533 mm) 2-piece adjustable back angle	21 in. (533 mm) 2-piece adjustable back angle	21 in. (533 mm) 2-piece adjustable back angle
--	---	---	---

TIRES

Front	Turf 18x8.50-8	Turf 18x7.00-8	Heavy-Duty All Purpose 18x8.50-10
Rear	Turf 26x12-12	Turf 26x10.50-12	Heavy-Duty All Purpose 26x12-12

LIFT SYSTEM

	Power	Power	Power
--	-------	-------	-------

PTO

	Hydraulic clutch	Hydraulic clutch	Hydraulic clutch
--	------------------	------------------	------------------

DIMENSIONS

Height (Seat Height)	51.2 in. (1300 mm)	51.2 in. (1300 mm)	51.2 in. (1300 mm)
Length, Overall	75 in. (1905 mm)	75 in. (1905 mm)	75 in. (1905 mm)
Min. Storage Width (Chute Up)	62 in. (1575 mm) w/ 60-in. Mower	57.5 in. (1461 mm) w/ 54-in. Mower	62 in. (1575 mm) w/ 60-in. Mower
Wheelbase	54.5 in. (1384 mm)	54.5 in. (1384 mm)	55.7 in. (1415 mm)
Weight, Approx.	1,078 lb (489 kg) w/ 54-in. Mower	1,133 lb (514 kg) w/ 54-in. Mower	1,168 lb (530 kg) w/ 54-in. Mower

MOWER OPTIONS

Cutting Width	48 in. Accel Deep™ Mower (1219 mm) 54 in. High Capacity (1372 mm) 60 in. High Capacity (1524 mm)	48 in. Accel Deep™ Mower (1219 mm) 54 in. High Capacity (1372 mm) 60 in. High Capacity (1524 mm)	48 in. Accel Deep™ Mower (1219 mm) 54 in. High Capacity (1372 mm) 60 in. High Capacity (1524 mm)
---------------	--	--	--

BUMPER-TO-BUMPER WARRANTY**

	4 year / 700 hours	4 year / 700 hours	4 year / 700 hours
--	--------------------	--------------------	--------------------



X739
(4WD, 4WS)

X750

X754
(4WS)

X758
(4WD)

John Deere iTorque™	3-cylinder	3-cylinder	3-cylinder
25.5 hp* (19 kW)	24 hp* (18 kW)	24 hp* (18 kW)	24 hp* (18 kW)
45.5 cu in. (745 cc)	60.6 cu in. (993 cc)	60.6 cu in. (993 cc)	60.6 cu in. (993 cc)
Liquid	Liquid	Liquid	Liquid
V-Twin	3	3	3
5.2 U.S. gal. (19.7 L)	5.2 U.S. gal. (19.7 L)	5.2 U.S. gal. (19.7 L)	5.2 U.S. gal. (19.7 L)
Gasoline	Diesel	Diesel	Diesel
Electronic	N/A	N/A	N/A
20 amp, regulated	40 amp, regulated	40 amp, regulated	40 amp, regulated
Electronic fuel injection	Indirect injection	Indirect injection	Indirect injection
Hydrostatic, Full-time 4-wheel drive	Hydrostatic, 2-wheel drive	Hydrostatic, 2-wheel drive	Hydrostatic, Full-time 4-wheel drive
8.5 mph (13.7 km/h)	8.5 mph (13.7 km/h)	8.5 mph (13.7 km/h)	8.5 mph (13.7 km/h)
6 mph (9.7 km/h)	6 mph (9.7 km/h)	6 mph (9.7 km/h)	6 mph (9.7 km/h)
Internal wet disc	Internal wet disc	Internal wet disc	Internal wet disc
Power, 4-wheel steer	Power, 2-wheel steer	Power, 4-wheel steer	Power, 2-wheel steer
21 in. (533 mm)	25 in. (635 mm)	21 in. (533 mm)	25 in. (635 mm)
6 in. (152 mm) w/ 60-in. HC Mower	28 in. (711 mm) w/ 60-in. HC Mower	6 in. (152 mm) w/ 60-in. HC Mower	28 in. (711 mm) w/ 60-in. HC Mower
21 in. (533 mm) 2-piece adjustable back angle	21 in. (533 mm) 2-piece adjustable back angle	21 in. (533 mm) 2-piece adjustable back angle	21 in. (533 mm) 2-piece adjustable back angle
Heavy-Duty All Purpose 18x8.50-10	Turf 18x8.50-8	Turf 18x7.00-8	Heavy-Duty All Purpose 18X8.50-10
Heavy-Duty All Purpose 26x12-12	Turf 26x12-12	Turf 26x10.50-12	Heavy-Duty All Purpose 26x12-12
Power	Power	Power	Power
Hydraulic clutch	Hydraulic clutch	Hydraulic clutch	Hydraulic clutch
51.2 in. (1300 mm)	51.2 in. (1300 mm)	51.2 in. (1300 mm)	51.2 in. (1300 mm)
75 in. (1905 mm)	75 in. (1905 mm)	75 in. (1905 mm)	75 in. (1905 mm)
57.5 in. (1461 mm) w/ 54-in. Mower	62 in. (1575 mm) w/ 60-in. Mower	57.5 in. (1461 mm) w/ 54-in. Mower	62 in. (1575 mm) w/ 60-in. Mower
55.7 in. (1415 mm)	54.5 in. (1384 mm)	54.5 in. (1384 mm)	55.7 in. (1415 mm)
1,255 lb (569 kg) w/ 54-in. Mower	1,163 lb (528 kg) w/ 54-in. Mower	1,218 lb (552 kg) w/ 54-in. Mower	1,253 lb (568 kg) w/ 54-in. Mower
48 in. Accel Deep™ Mower (1219 mm)	48 in. Accel Deep™ Mower (1219 mm)	48 in. Accel Deep™ Mower (1219 mm)	48 in. Accel Deep™ Mower (1219 mm)
54 in. High Capacity (1372 mm)	54 in. High Capacity (1372 mm)	54 in. High Capacity (1372 mm)	54 in. High Capacity (1372 mm)
60 in. High Capacity (1524 mm)	60 in. High Capacity (1524 mm)	60 in. High Capacity (1524 mm)	60 in. High Capacity (1524 mm)
4 year / 700 hours	4 year / 700 hours	4 year / 700 hours	4 year / 700 hours



Specifications

X570 / X580

X584 / X590

X330 / X350

X354 (4WS) / X370

ENGINE

Model Number	FS730 V iTorque™ Power System	FS730 V iTorque™ Power System / FS730V-EFI iTorque™ Power System	44J6 Cyclonic / FR651V iTorque™ Power System	FS600V iTorque Power System
Engine Power	24 hp* (17.9 kW)	24 hp* (17.9 kW) / 25.5 hp* (19.0 kW)	22 hp* (16.4 kW) / 21.5 hp* (16.0 kW)	18.5 hp* (13.8 kW)
Displacement	44.3 cu in. (726 cc)	44.3 cu in. (726 cc)	44.2 cu in. (724 cc) / 44.3 cu in. (726 cc)	36.8 cu in. (603 cc)
Cooling	Air	Air	Air	Air
Governor	Mechanical	Mechanical / Electronic throttle control	Mechanical	Mechanical
Cylinder Configuration	V-twin	V-twin	V-twin	V-twin
Electrical System	12 volts, 15 amp regulated	12 volts, 15 amp regulated	12 volts, 12 amp regulated / 12 volts, 12 amp regulated	12 volts, 12 amp regulated

DASH DISPLAY

Fuel Gauge	Yes	Yes	Yes	Yes
------------	-----	-----	-----	-----

FUEL SYSTEM

Fuel Tank Capacity	4.4 U.S. gal. (16.7 L)	4.4 U.S. gal. (16.7 L)	3.3 U.S. gal. (12.5 L)	3.3 U.S. gal. (12.5 L)
--------------------	------------------------	------------------------	------------------------	------------------------

TRANSMISSION

Forward Speed	0-7.2 mph (0-11.6 km/h)	0-7.2 mph (0-11.6 km/h)	0-5.5 mph (0-8.9 km/h)	0-5.5 mph (0-8.9 km/h) / 0-5.8 mph (0-9.3 km/h)
Reverse Speed	0-5.2 mph (0-8.4 km/h)	0-5.2 mph (0-8.4 km/h)	0-4 mph (0-6.4 km/h)	0-4 mph (0-6.4 km/h) / 0-3.5 mph (0-5.6 km/h)
STEERING:	Low effort, 2-wheel steer / Power, 2-wheel steer	Power, 4-wheel steer / Power, 2-wheel steer	Low effort, 2-wheel steer	Low effort, 4-wheel steer / Power, 2-wheel steer

Tilt Wheel	No	Yes, 5 position	No	No
Front Axle	Cast iron	Cast iron	Cast iron	Cast iron

TURNING RADIUS

	16 in. (40.6 cm) / 22 in. (55.9 cm)	19 in. (48.3 cm) / 22 in. (55.9 cm)	16 in. (40.6 cm)	15 in. (38.1 cm) / 22 in. (55.9 cm)
--	-------------------------------------	-------------------------------------	------------------	-------------------------------------

UNCUT CIRCLE RADIUS

	23 in. (58 cm) w/48A Mower or 20 in. (51 cm) w/54A Mower / 24 in. (61 cm) w/54A Mower	15 in. (38 cm) w/48A Mower or 12 in. (30 cm) w/54A Mower / 27 in. (69 cm) w/48A Mower or 24 in. (61 cm) w/54A Mower	26 in. (66 cm) w/42A Mower or 21 in. (53 cm) w/48A Mower	15 in. (38 cm) w/42A Mower or 30 in. (76 cm) w/42A Mower
--	---	---	--	--

SEAT

Style	15 in. (38.1 cm) open back with grasp / 21 in. (53.3 cm) cut and sewn	21 in. (53.3 cm) cut and sewn	15 in. (38.1 cm) open back	18-inch (45.7 cm) cut-and-sewn
-------	---	-------------------------------	----------------------------	--------------------------------

LIFT SYSTEM

Type	Foot pedal with adjustable spring assist / Hydraulic	Hydraulic	Foot pedal / Foot pedal with spring assist (48A Mower)	Foot pedal / Hydraulic
------	--	-----------	--	------------------------

TIRES

Type	Turf / Turf, Heavy-Duty All-Purpose (rear only)	Turf / Heavy-Duty All-Purpose (rear only) w/54 in. Accel Deep	Turf	Turf
Front	15x6.5-8 / 16x6.5-8	16x6.5-8	15x6-6	15x6-6
Rear	24x12-12 / 24x12-12	24x9.5-12 / 24x12-12 HDAP	20x10-8	20x10-10 / 20X10-8

DIMENSIONS

Wheelbase	51.2 in. (130 cm)	51.2 in. (130 cm)	49.4 in. (125 cm)	49.4 in. (125 cm)
Overall Length	75 in. (191 cm) / 79 in. (201 cm)	79 in. (201 cm) / 79 in. (201 cm)	72 in. (183 cm)	72 in. (183 cm)
Min. Storage Width (Deflector Up)	53.6 in. (136 cm) w/48 in. Accel Deep or 59.4 in. (151 cm) w/54 in. Accel Deep	53.6 in. (136 cm) w/48 in. Accel Deep or 59.4 in. (151 cm) w/54 in. Accel Deep	50.5 in. (128 cm) w/42 in. Accel Deep or 53.6 in. (136 cm) w/48 in. Accel Deep	50.5 in. (128 cm) w/42 Accel Deep Mower
Weight, Tractor (no fuel) and Mower	748 lb (339 kg) w/48 in. Accel Deep, 756 lb (343 kg) w/54 in. Accel Deep / 787 lb (357 kg) w/54 in. Accel Deep	837 lb (380 kg) w/48 in. Accel Deep or 845 lb (383 kg) w/54 in. Accel Deep / 797 lb (362 kg) w/48 in. Accel Deep or 805 lb (365 kg) w/54 in. Accel Deep	542 lb (246 kg) w/42 in. mower / 607 lb (275 kg) w/48 in. Accel Deep	623 lb (283 kg) w/42 in. mower / 570 lb (259 kg) w/42 in. mower

MOWER DECK OPTIONS

	48 in. Accel Deep™ or 54 in. Accel Deep / 54 in. Accel Deep	48 in. Accel Deep or 54 in. Accel Deep	42 in. Accel Deep / 42 in. Accel Deep or 42 in. Mulch option or 48 in. Accel Deep	42 in. Accel Deep
Cutting Width / Blades	48 in. (122 cm) 3 blades or 54 in. (137 cm) 3 blades	48 in. (122 cm) 3 blades or 54 in. (137 cm) 3 blades	42 in. (107 cm) 2 blades / 42 in. (107 cm) 2 blades or 48 in. (122 cm) 3 blades	42 in. (107 cm) 2 blades

BUMPER-TO-BUMPER WARRANTY**

	4 year/500 hours	4 year/500 hours	4 year/300 hours	4 year/300 hours
--	------------------	------------------	------------------	------------------

X380**X384 (4WS) /
X390 / X394****X350R****S220****S240**

FR65iV iTorque Power System	FR65iV iTorque Power System	FR65iV iTorque Power System	LC2P77F	FR65iV iTorque Power System
22 hp* (16.4 kW)	22 hp* (16.4 kW)	18.5 hp* (13.8 kW)	22 hp* (16.4 kW)	21.5 hp* (16.0 kW)
44.3 cu in. (726 cc)	44.3 cu in. (726 cc)	36.8 cu in. (603 cc)	43.2 cu in. (708cc)	44.3 cu in. (726 cc)
Air	Air	Air	Air	Air
Mechanical	Mechanical	Mechanical	Mechanical	Mechanical
V-twin	V-twin	V-twin	V-twin	V-twin
12 volts, 12 amp regulated	12 volts, 12 amp regulated	12 volts, 12 amp regulated	15 volts, 12 amp regulated	15 volts, 12 amp regulated
Yes	Yes	Low fuel indicator	Mechanical	Yes
3.3 U.S. gal. (12.5 L)	3.3 U.S. gal. (12.5 L)	2 U.S. gal. (7.6 L)	2.4 U.S. gal. (9.1 L)	2.4 U.S. gal. (9.1 L)
0-6.2 mph (0-10 km/h)	0-5.9 mph (0-9.5 km/h) / 0-6.2 mph (0-10.0 km/h) / 0-6.2 mph (0-10.0 km/h)	0-5.3 mph (0-8.5 km/h)	0-5.5 mph (0-8.9 km/h)	0-5.5 mph (0-8.9 km/h)
0-3.5 mph (0-5.6 km/h)	0-3.5 mph (0-5.6 km/h)	0-4 mph (0-6.4 km/h)	0-3.2 mph (0-5.1 km/h)	0-3.2 mph (0-5.1 km/h)
Low effort, 2-wheel steer	Low effort, 4-wheel steer / Power, 2 wheel steer / Power, 4-wheel steer	Low effort, 2-wheel steer	Low effort, 2-wheel steer	Low effort, 2-wheel steer
No	No/Yes/Yes	No	No	No
Cast iron	Cast iron	Cast iron	Cast iron	Cast iron
16 in. (40.6 cm)	15 in. (38.1 cm) / 22 in. (55.9 cm) / 19 in. (48.3 cm)	16.5 in. (42 cm)	18 in. (45 cm)	18 in. (45 cm)
21 in. (53 cm) w/48A Mower or 18 in. (46 cm) w/54A Mower	9 in. (23 cm) w/48A Mower / 24 in. (61 cm) w/48A Mower or 22 in. (56 cm) w/54A Mower / 15 in. (38 cm) w/48A Mower	Right 23 in. (58 cm), Left 28 in. (71 cm) with 42R Mower	24 in. (61 cm) w/42A Mower	24 in. (61 cm) w/42A Mower or 19 in. (48 cm) w/48A Mower
18-inch (45.7 cm) cut-and-sewn	18-inch (45.7 cm) cut-and-sewn	18-inch (45.7 cm) cut-and-sewn	15 in. (38.1 cm) open back	15 in. (38.1 cm) open back
Foot pedal with spring assist	Foot pedal with spring assist / Hydraulic / Hydraulic	Foot pedal with spring assist	Hand lever with spring assist	Hand lever with spring assist
Turf	Turf	Turf	Turf	Turf
15x6.5-8	15x6-6 / 15x6.5-8 / 15x6.5-8	15x6-6	15x6-6	15x6-6
22x11-10	20x10-10 / 22x11-10 / 22x9.5-12	20x10-8	20x10-8	20x10-8
49.4 in. (125 cm)	49.4 in. (125 cm)	49.4 in. (125 cm)	48.9 in. (124.2 cm)	48.9 in. (124.2 cm)
72 in. (183 cm)	72 in. (183 cm) / 72 in. (183 cm) / 74 in. (188 cm)	99 in. (251.4 cm)	75 in. (191 cm)	75 in. (191 cm)
53.6 in. (136 cm) w/48 in. Accel Deep Mower or 59.4 in. (151 cm) w/54 in. Accel Deep Mower	53.6 in. (136 cm) w/48 in. Accel Deep Mower / 53.6 in. (136 cm) w/48 in. Accel Deep Mower or 59.4 in. (151 cm) w/54 in. Accel Deep Mower / 53.6 in. (136 cm) w/48 in. Accel Deep Mower	43.8 in. (111 cm) with 42 in. rear discharge, rear collect mower	49 in. (124 cm) w/42A Mower	49 in. (124 cm) w/42A Mower or 54 in. (137 cm) w/48A Mower
651 lb (295 kg) w/48 in. mower or 659 lb (299 kg) w/54 in. mower	700 lb (318 kg) w/48 in. mower / 678 lb (308 kg) w/48 in. mower or 686 lb (311 kg) w/54 in. mower / 755 lb (342 kg) w/48 in. mower	646 lb (293 kg) w/42 in. mower	481 lb (218 kg) w/42A / 486 lb (220 kg) w/42A	481 lb (218 kg) w/42A / 486 lb (220 kg) w/42A or 522 lb (237 kg) w/48A
48 in. Accel Deep or 54 in. Accel Deep	48 in. Accel Deep / 48 in. Accel Deep or 54 in. Accel Deep / 48 in. Accel Deep	42 in. rear discharge and collect with standard mulch plug	42 in. Accel Deep	42 in. Accel Deep or 48 in. Accel Deep
48 in. (122 cm) 3 blades or 54 in. (137 cm) 3 blades	48 in. (122 cm) 3 blades / 48 in. (122 cm) 3 blades or 54 in. (137 cm) 3 blades / 48 in. (122 cm) 3 blades	42 in. (107 cm) 2 blades	42 in. (107 cm) 2 blades	42 in. (107 cm) 2 blades or 48 in. (122 cm) 3 blades
4 year/300 hours	4 year/300 hours	4 year/300 hours	3 year/200 hours	3 year/200 hours

Specifications **S100**

S110

S120 / S130

S140

S160

S170 / S180

ENGINE

Horsepower*	175 hp (13.0 kW)	19.0 hp (14.2 kW)	22 hp (16.4 kW)	22 hp (16.4 kW)	24 hp (17.9 kW)	24 hp (17.9 kW)
Cylinders	One	One	V-twin	V-twin	V-twin ELS	V-twin ELS
Displacement	30.5 cu in. (500 cc)	33 cu in. (540 cc)	44 cu in. (724 cc)	44 cu in. (724 cc)	44 cu in. (724 cc)	44 cu in. (724 cc)
Oil Filter	Traditional	Traditional	John Deere Easy Change™ 30-Second Oil Change System***	Traditional	John Deere Easy Change™ 30-Second Oil Change System***	John Deere Easy Change™ 30-Second Oil Change System***
Air Filter	Cartridge	Cartridge	Cartridge	Cartridge	Cartridge with prefilter	Cartridge with prefilter

MOWER DECK

Cut Width	42 in. (107 cm)	42 in. (107 cm)	42 in. (107 cm)	48 in. (122 cm)	48 in. (122 cm)	48 in. (122 cm) / 54 in. (137 cm)
Cutting Blades	Two	Two	Two	Three	Three	Three
Cut Height	1 to 4 in. (25.4 to 102 mm)	1 to 4 in. (25.4 to 102 mm)	1 to 4 in. (25.4 to 102 mm)	1 to 4 in. (25.4 to 102 mm)	1 to 4 in. (25.4 to 102 mm)	1 to 4 in. (25.4 to 102 mm)
Mower Deck Material	Stamped steel	Stamped steel	Stamped steel	Stamped steel	Stamped steel	Stamped steel
Blade Engagement / PTO	Manual	Manual	Manual / Electric	Electric	Electric	Electric

TRANSMISSION

Type	Automatic	Hydrostatic	Hydrostatic	Hydrostatic	Hydrostatic	Hydrostatic
------	-----------	-------------	-------------	-------------	-------------	-------------

TURNING RADIUS

	18 in. (45 cm)	18 in. (45 cm)	18 in. (45 cm)	18 in. (45 cm)	18 in. (45 cm)	18 in. (45 cm)
--	----------------	----------------	----------------	----------------	----------------	----------------

ELECTRICAL SYSTEM

Capacity	8 amp	8 amp	8 amp	8 amp	14 amp	14 amp
----------	-------	-------	-------	-------	--------	--------

FUEL SYSTEM

Fuel Gauge	Mechanical	Mechanical	Yes	Mechanical	Yes	Yes
Fuel Tank Capacity	2.4 gal. (9.08 L)	2.4 gal. (9.08 L)	2.4 gal. (9.08 L)	2.4 gal. (9.08 L)	2.4 gal. (9.08 L)	2.4 gal. (9.08 L)
Type of Fuel	Gasoline	Gasoline	Gasoline	Gasoline	Gasoline	Gasoline
Fuel Filter	Replaceable, in fuel line	Replaceable, in fuel line	Replaceable, in fuel line	Replaceable, in fuel line	Replaceable, in fuel line	Replaceable, in fuel line

TRAVEL SPEED

Forward	0-5.5 mph (8.9 km/h)	0-5.5 mph (8.9 km/h)	0-5.5 mph (8.9 km/h)	0-5.5 mph (8.9 km/h)	0-5.5 mph (8.9 km/h)	0-5.5 mph (8.9 km/h)
Reverse	0-3.2 mph (5.1 km/h)	0-3.2 mph (5.1 km/h)	0-3.2 mph (5.1 km/h)	0-3.2 mph (5.1 km/h)	0-3.2 mph (5.1 km/h)	0-3.2 mph (5.1 km/h)

SEAT

Height	11 in. (27.9 cm)	15 in. (38.1 cm) open back	15 in. (38.1 cm) open back	15 in. (38.1 cm) open back	15 in. (38.1 cm) w/lumbar adjustment	15 in. (38.1 cm) w/lumbar adjustment
--------	------------------	-------------------------------	-------------------------------	-------------------------------	---	---

TIRES

Front	15x6-6	15x6-6	15x6-6	15x6-6	15x6-6	16x6.5-8
Rear	20x8-8	20x8-8	20x8-8 / 20x10-8	20x8-8	20x10-8	22x9.5-12

DIMENSIONS

Overall Length	69.7 in. (177 cm)	69.7 in. (177 cm)	69.7 in. (177 cm) / 74.2 in. (188 cm)	69.7 in. (177 cm)	74.9 in. (190 cm)	75.3 in. (191 cm)
Overall Width (deflector down)	55.2 in. (140 cm)	55.2 in. (140 cm)	55.2 in. (140 cm)	60.8 in. (154 cm)	60.8 in. (154 cm)	60.8 in. (154 cm) / 67.0 in. (170 cm)
Height	40.2 in. (102 cm)	40.2 in. (102 cm)	44.5 in. (113 cm)	44.5 in. (113 cm)	45.3 in. (115 cm)	45.7 in. (116 cm)

NET WEIGHT (NO FUEL)

	414 lb (188 kg)	414 lb (188 kg)	444 lb (201 kg) / 462 lb (210 kg)	468 lb (212 kg)	481 lb (218 kg)	503 lb (239 kg) / 526 lb (239 kg)
--	-----------------	-----------------	--------------------------------------	-----------------	-----------------	--------------------------------------

MISCELLANEOUS

Cruise Control	No	No	Yes	No	Yes	Yes
Front Bumper	Optional	Optional	Optional / Standard	Standard	Standard	Standard
Steering Wheel	Standard, 12 in.	Standard, 12 in.	Standard, 12 in.	Standard, 12 in.	Deluxe, 14 in.	Deluxe, 14 in.
Storage Compartment	Storage, no cover	Storage, no cover	Storage w/cover	Storage, no cover	Storage w/cover	Storage w/cover

BUMPER-TO-BUMPER WARRANTY**

	2 year / 120 hours	2 year / 120 hours	2 year / 120 hours	2 year / 120 hours	2 year / 120 hours	2 year / 120 hours
--	--------------------	--------------------	--------------------	--------------------	--------------------	--------------------

* The engine horsepower and torque information are provided by the engine manufacturer to be used for comparison purposes only. Actual operating horsepower and torque will be less. Refer to the engine manufacturer's web site for additional information.

** Term limited to years or hours used, whichever comes first, and varies by model. See the LIMITED WARRANTY FOR NEW JOHN DEERE TURF AND UTILITY EQUIPMENT at JohnDeere.com or www.JohnDeere.ca/TUWarranty for details.

*** Changing the filter removes the captured contaminants and replaces about 0.8 qt (0.76 L) of engine oil.

Attachments

X700 SERIES X500 SERIES X300 SERIES 200 SERIES 100 SERIES

TWO-STAGE SNOW BLOWERS

44-in. Snow Blower		X ^a	X	X	X
47-in. Snow Blower	X	X ^a			
54-in. Snow Blower	X				
47-in. Quick Hitch	X				
54-in. Quick Hitch	X				

FRONT BLADES

44-in. Front Blade			X		
46-in. Front Blade				X	X
48-in. Front Blade		X	X ^a		
54-in. Quick Hitch Front Blade	X				
60-in. Quick Hitch Front Blade	X				

MATERIAL COLLECTION SYSTEMS

2-bag (6.5-bu) Rear Bagger				X ^a	X ^a
2-bag (7-bu) Rear Bagger			X ^a		
3-bag (14-bu) Rear Bagger	X	X	X		
MC519 (19-bu) Power Flow Cart	X	X	X ^a		
Front Thatcher	X	X	X		

WEATHER ENCLOSURES AND CANOPY

Weather Enclosure	X	X	X ^a	X	X
Sun Canopy		X	X ^a	X	X

REAR MOUNTED ATTACHMENTS

Bucket Holder	X	X	X ^a	X	X
125 lb Electric Broadcast Spreader (Mounted)	X	X	X ^a		
Frontier BB2048L Box Blade	X				
Frontier RB2060L 5 Ft. Rear Blade	X				
Frontier LR2060L 5 Ft. Landscape Rake	X				
30-in. Mechanical Drive Tiller		X ^a			
42-in. Hydraulic Drive Tiller	X	X ^a			
647 540 PTO 3-pt. Tiller	X				

SPRAYERS

15 U.S. Gallon Tow-Behind	X	X	X	X	X
25 U.S. Gallon Tow-Behind	X	X	X	X	X
45 U.S. Gallon Tow-Behind	X	X			
15 U.S. Gallon Mounted				X	X
25 U.S. Gallon Mounted	X	X	X ^a		
45 gallon 3-point	X				

TOW-BEHIND EQUIPMENT

40-in. Thatcherator	X	X	X	X	X
36-in. Lawn Roller	X	X	X	X	X
40-in. Spiker Aerator	X	X	X	X	X
40-in. Aerator/Spreader	X	X	X	X	X
42-in. Lawn Sweeper	X	X	X	X	X
44-in. Lawn Sweeper	X	X	X	X	X
40-in. Plug Aerator	X	X	X	X	X
48-in. Plug Aerator	X	X			
125-, 130-, or 175-lb Broadcast Spreaders	X	X	X	X	X

UTILITY CARTS**

7P Utility Cart	X	X	X	X	X
8Y Utility Cart	X	X	X	X	X
10P Utility Cart	X	X	X	X	X
10PX Utility Cart	X	X	X	X	X
13 Utility Cart	X	X			
16YS Swivel Poly Utility Cart	X	X	X	X	X
17P Utility Cart	X	X	X	X	X
18 Steel Utility Cart	X	X	X		
Tractor Shovel 40-in.	X	X	X		
54-inch Tractor Shovel	X				

^a Not all attachments fit on all models within Series.

**The loaded weight of the utility cart not to exceed the weight of the tractor and operator.





Committed turf experts dig into what you need. Factory-trained service and parts professionals ensure that your equipment keeps working as hard as you do. So, let's get to work, together.

†The engine horsepower and torque information are provided by the engine manufacturer to be used for comparison purposes only. Actual operating horsepower and torque will be less. Refer to the manufacturer's web site for additional information.

**Features, specs and attachments subject to change without notice. Before operating or riding, always refer to the safety and operating information on the vehicle, and in the Operator's Manual. Actual vehicle top speed may vary based on belt wear, tire selection, vehicle weight, fuel condition, terrain and other environmental factors. Travel responsibly on designated roads, trails or areas, respect the rights of others, and avoid sensitive areas such as meadows, lakeshores, wetlands and streams. This literature has been compiled for worldwide circulation. While general information, pictures and descriptions are provided, some illustrations and text may include finance, credit, insurance, product options and accessories NOT AVAILABLE in all regions. PLEASE CONTACT YOUR LOCAL DEALER FOR DETAILS. John Deere reserves the right to change specification, design and price of the products described in this literature without notice. John Deere's green and yellow color scheme, the leaping deer symbol, and JOHN DEERE are trademarks of Deere & Company.

DSTA80209 (20-10)



www.JohnDeere.com
www.JohnDeere.ca



JOHN DEERE