

**Rotex** 400-450-550  
**Duplex** 400



## Rotor Loader Wagons and Silage Spreaders



*My way of Farming!*



# KEEP YOUR SYSTEM RUNNING

*My way of Farming!*



Working the land, running my farm and connecting with nature. Farming is my way of living, and despite being rough at times, I never grow weary of everyday tasks of attending to my land and livestock. I keep up with developments by staying loyal to personal philosophies and applying the appropriate strategy.

I shape and influence my own future by combining craftsmanship with modern technology, employing the very best machinery. I actively seek new opportunities, by being innovative in my way of working. I work hard to grow a good crop. I am passionate about my livestock, providing my animals with only the best. My farm and its returns, reflects who I am, because my heart and soul is put into the work I do.

Farming is about passion, about growing and developing, my crop, my farm, myself, my way.

# ROTEX 400-500 SERIES ROTOR LOADER WAGONS

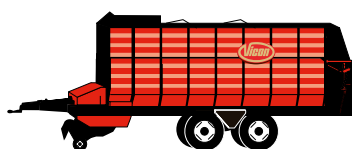


*My way of Farming!*



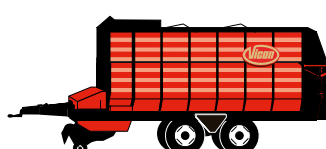
#### Rotex 552-550

- Load Capacity to DIN 11741: 32.4m<sup>3</sup> - 35.6m<sup>3</sup>
- Load Capacity, medium compression: 51m<sup>3</sup>/56m<sup>3</sup>
- Maximum Weight: 20,/21,000kg



#### Rotex 452-450

- Load Capacity to DIN 11741: 26.1/29.4m<sup>3</sup> - 29.3/32.6m<sup>3</sup>
- Load Capacity, medium compression: 41/46m<sup>3</sup> / 46/51m<sup>3</sup>
- Maximum Weight: 16,/17,000kg



#### Rotex 402-400

- Load Capacity to DIN 11741: 19.9/22.9m<sup>3</sup> - 23.1/26.1/29.2m<sup>3</sup>
- Load Capacity, medium compression: 34/39/44m<sup>3</sup> - 36/41/46m<sup>3</sup>
- Maximum Weight: 13,/14,000kg



## Powerful Pick-Up *for Maximum Capacity*

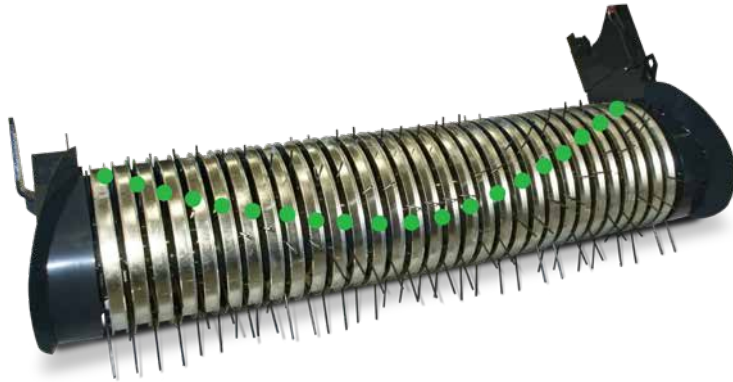


Made to beat large swath sizes.

*The pick-up unit is a key feature on the Rotex models and without cam tracks, the intake system is virtually a maintenance-free design. The uncontrolled pick-up unit gives less wear compared to a pick-up with cam track steering.*



Powerfull Pickup with V-shaped tine arrangement for a uniform delivery towards chopping rotor



Large PU 2.3 with augers for optimal guidance of grass to rotor.

#### V-Shaped Tine Arrangement

The 2.00m and 2.30m wide pick-up with galvanised scrapers offers high performance with fast and efficient crop transport. Six tine bars with a tine spacing of 55mm give high performance while encouraging fast and efficient crop flow into the chamber. With a total of 96/90 pick-up tines arranged in a special V-shaped pattern every haulm even from the largest swaths is raked up.

The TwinMax intake system uses staggered tines on the pick-up, operating with a roller crop press, to deliver a uniform flow of material across the full width of the chopping rotor. This ensures a consistent, even flow without load peaks.

#### The Advantages

- 2.30/2.00m pick-up.
- 2.24/1.83m pick-up working width (DIN 11220).
- Six tine bars, each fitted with 16/15 teeth (total of 96/90) and with 55mm tine spacing.
- Pick-up tines arranged in a V-shape pattern for fast and efficient crop transport.
- Roller crop press for even flow of material into the chamber.
- Pivoting pick-up guide wheels.
- Pick-up without cam track for low wear and smooth operation.

## “Uncontrolled Pick-Up Steering”

#### Smooth Operation with Low Wear

Thanks to uncontrolled tines there are no moving parts and no parts that need greasing. The result is smoother operation with less power requirements, low noise level and a maintenance-free system.



The swivelling pick-up guide wheels are equipped with generous floatation tyres. This ensures accurate, close raking performance and guidance of the pick-up.



The roller crop press pre-compresses the crop and helps to even out the flow of material. It provides a uniform flow of crop into the wagon, reducing the risk of blockages and allowing increased intake speed.

## V-Max Rotor *for Excellent Throughput*



The combination of large wheels and hydraulically articulated drawbar allows generous space for inspection of rotor and knives.

### **Precise and Clean Cut**

The Rotex pre-chopping system with 35 knives offers the ultimate solution for short chop with a chop length of 40mm. The 35 knives, positioned in a single row, work efficiently in combination with 20mm wide tines to ensure gentle and accurate cutting performance.

Each individual knife is spring protected against foreign obstacles. If an obstacle hits the knife, it will pivot backwards without losing cutting quality. The knife will immediately return to working position once the obstacle has passed.



The nine V-shaped rows of tine of the rotor feature 20mm wide tines that ensure a gentle and efficient flow of material into the chamber.



#### V-Max Rotor

The V-Max rotor offers a high capacity intake system for maximum throughput in all conditions. The special V-shape of the rotor ensures an even and fast flow of material across the entire rotor width, minimising peak loads and reducing power requirements. The V-Max rotor is utilising the full capacity of the rotor, ensuring continuous cutting performance.

#### Robust Cut-and-Feed Rotor

The Rotex series is equipped with a high capacity intake system for maximum throughput under all conditions. The well-proven and robust cut-and-feed rotor is designed to carry the highest loads. The V-Max rotor is driven by the maintenance-free oil-immersed gearbox that ensures trouble-free operation of the large 800mm diameter rotor. The nine V-shaped rows of tine of the rotor feature 20mm wide tines that ensure a gentle and efficient flow of material into the chamber.



Each rotor ring consists of 3 bolted segments. Each segment can be replaced individually without the need to remove the complete rotor.

The knives are quickly released and changed without the use of tools.



Each knife is spring protected against foreign obstacles. The knife will immediately return to working position once the obstacle has passed.



#### The Advantages

- High capacity V-Max intake with 800mm diameter rotor.
- Special V-shaped rotor for even and fast crop transfer.
- Pre-chopping system with 35 knives.
- Theoretical chopping length of 40mm.
- Knives are easy to change without the need for tools.
- Individual spring protection of the knives.
- Maintenance-free oilbath gearbox.



## Loading *and Unloading*

### **SuperStructure Chamber**

Rotex series boasts a frame that is made of robust C-profiled 220x100x8mm steel sections (closed on the outside) as well as strong stanchions and vertical steel sides. The vertical side plates move the material to the rear of the chamber, ensuring a full load.

### **Deflector Plate**

Deflector plates are installed in the front loading area to prevent material building up in this area. It is designed to optimize distribution of the crop throughout the entire width and height of the chamber.

### **Chain-and-Slat Conveyor**

The hydraulic chain-and-slat conveyor is split into two segments and features four robust chains that handle even the heaviest material.

The gearbox is positioned in the middle of the two segments, ensuring equal power distribution to both sides and torque split on two shafts instead of one. It is able to smoothly move massive amounts of crop to the rear of the chamber. The scraper floor automatically disengages when the chamber is full. Loading and unloading speed is infinitely adjustable and sensors warn via the control box when the chamber is full.



### Fast and Efficient Unloading

Thanks to the automatic unloading function unloading is very easy. The speed of the chain-and-slat conveyor is infinitely adjustable to give an even layer of crops into the silo. Via the control terminal it is possible to choose between manually controlled or fully automatic unloading operation.

With the Rotex 402, 452 and 552 we offer two large-diameter discharge rollers, which are driven by a maintenance-free driveshaft, to unload the material in a uniform and even mat, reducing the need for evening out the clamp afterwards.

The sensor controlled tailgate is operated hydraulically. The tailgate is mechanically closed and is monitored through two sensors, showing the position on the control terminal. The opening angle can be set manually to ensure even unloading of material with the two discharge rollers.

The interior lighting kit provides generous light into the chamber when working at night.

### The Advantages

- SuperStructure chamber made from strong C-profiled steel sections.
- Chain-and-slat conveyor with split driveline and gearbox positioned in the middle.
- Conveyor with 4 robust chains designed for even the heaviest material.
- Deflector plates in the front area prevents material building up.
- Opening angle of the tailgate can be set manually to ensure even unloading.
- Rotex 402, 452 and 552 with two large-diameter discharge rollers.



Easy access to the chamber is provided by the access door and ladder.



Chain-and-slat conveyor with split driveline and gearbox positioned in the middle for equal power distribution.



Strong and straight side walls ensure smooth transfer of crop to the rear of the chamber.



The deflector plates ensure optimum distribution of the crop throughout the entire chamber.



## Geared for ***Top Performance***

### **Hydraulic Articulation Drawbar**

The Rotex series offers a ground clearance of more than 70cm when the pick-up is raised. The hydraulically articulated drawbar allows the tractor to climb steep clamps, while the cab-mounted terminal offers operators convenient and safe drawbar control.

The Rotex series is available with two different drawbar executions. The pin-hitch drawbar is standard fitted onto the Rotex models, offering generous clearance when collecting huge swaths. High drawbar is optional available. The bottom-mounted drawbar puts more load on the front axles and is able to cope with higher loads.



The bottom-mounted drawbar is standard equipment.



Actively steered wheels for improved manoeuvrability (opt. electronic steering for 550/552).



Large 600/55 - 22.5 tyres are standard fitted on Rotex 552/550.

### Strong Axles and Running Gear

The strong and stable tandem axles offer smooth operation and are designed for safe and fast transport of the crop to the silo clamp. The tandem axle is rated to a maximum loading of up to 21 tonnes (up to 16 tonnes for Rotex 452/450 and up to 14 tonnes for Rotex 402/400).

The standard level of specification comprises a hydraulic brake system and XXL tyres. Pneumatic braking system is available as option. The large tyre sizes reduces soil compaction when operating in the field.

The Rotex 552/550 is standard fitted with actively steered wheels, improving manoeuvrability when space is limited. Also it reduces ground damages when turning in the field and tyre wear.



Air brake system for safe transport is available as option.



The Rotex models can optionally be fitted with hydraulically articulated pin-hitch drawbar.

**“Solid Design  
for various  
conditions”**



## Convenient Solution *for Daily Grazing*



Well-protected 800mm wide conveyor belt for fast...

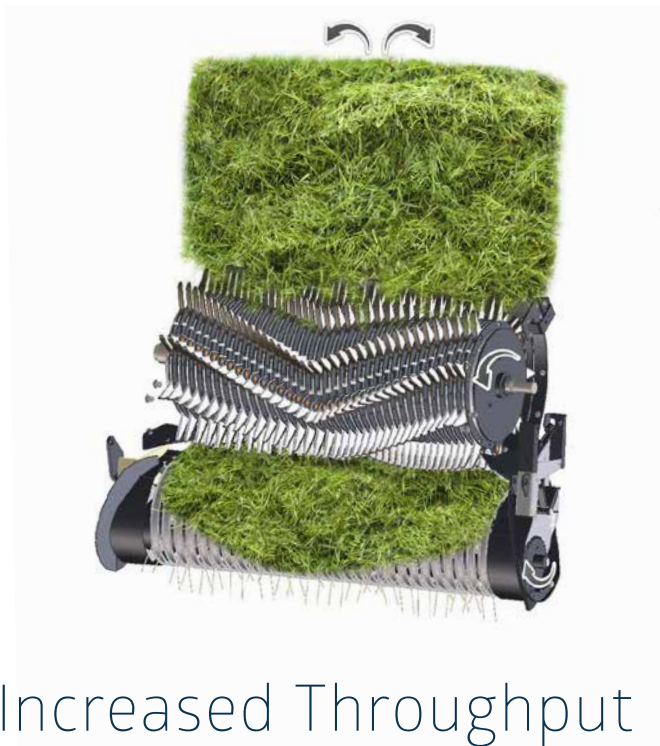


...but also exact and controlled unloading according adjustments.

### **Simple and efficient Set-up**

The Rotor Wagon Models 402, 452 and 552 with discharge rollers can be fitted with a conveyor belt for daily grazing.

With its simple set-up its easy to operate with. the conveyor belt is connected to the rear wagon by a manual sliding system. With the ISOBUS Terminal its a comfortable operating from the cabin with individual speed and output adjustment whereas unloading.



**“Maintenance-free gearbox reduces power requirements”**

## Increased Throughput *Requires a Strong Driveline*

*The Rotex models are fitted with a PTO shaft driveline that efficiently transmits the power, even to the very end of the wagon. Together with the maintenance-free gearboxes it reduces power requirements.*

### **Efficient Power Transmission**

Power is evenly distributed throughout the Rotex 400, 450 and 550 via a heavy duty gearbox and driveline with a double wide-angle PTO and integral cam clutch – all capable of handling up to 1800Nm of torque. This means more output, and better power transmission to the chopping rotor.



Central drive of the chain-and-slat floor conveyor provides a powerful, yet adjustable moving floor discharge system. Speeds can be controlled from the cab, up to a maximum of 12 metres/minute.

## Everything Under Control *with ISOBUS Terminals*



### **ISOBUS - Get Connected**

The Rotex models are fully ISOBUS 11783 compliant. This means that they will plug directly into an ISOBUS compatible tractor without the need for a separate terminal. Standardisation of controls and the possibility to operate the functions via tractor joystick easier connection between tractors and implements, together with potential lower machine purchase costs are just some of the benefits that the ISO 11783 standard will bring you.

Kverneland Group Mechatronics leads the field in the implementation of the ISOBUS standard. All major tractor and machinery manufacturers are committed to this standard with ever increasing numbers of tractors and machines now fully ISO certified - your assurance of a future proofed machine.

The majority of new tractors are currently still not supplied as standard with full ISO compatibility, so the Rotex models can be supplied with the IsoMatch Tellus colour terminal or the IsoMatch Tellus GO.

### IsoMatch Tellus – the Universal ISOBUS Terminal

The IsoMatch Tellus is the new virtual terminal, offering 2 interface screens in 1 terminal. The large 12" easily programmable touchscreen offers ergonomic use and is designed for long days of operation. Due to the increasing number of functionalities that can be added to a machine such as cameras, the operator can use the loader wagon interface in the top screen and a camera display in the bottom screen, to monitor the unloading process. Another possibility is to use the loader wagon interface in the top screen and the tractor interface screen at the bottom.



IsoMatch Tellus.

The following functions are operated with the IsoMatch Tellus and IsoMatch Tellus GO control terminals:

- Choose between manual and automatic loading function.
- Choose between manual and automatic unloading function.
- Cut and uncut loadings counter per customer/field.
- Service menu to change specifications according to your personal needs.
- Adjustment of chain-and-slat conveyor speed.
- Work light on/off.
- Pick-up up/down.
- Drawbar up/down.
- Tailgate close/open.
- Knives in/out.

IsoMatch Tellus GO.



### IsoMatch Tellus GO

Kverneland Group is extending its range of Universal ISOBUS Terminals with the IsoMatch Tellus GO. This new multifunctional one-screen terminal is developed for fast and simple control of any ISOBUS implement, giving the farmer a 'custom made' experience as it suits all needs for plain and efficient handling of farming machinery and tasks.

Just connect your machine, step into the tractor cab, switch on the power button and GO. The terminal brings the implement automatically into view. To maximise user comfort all buttons are positioned on right hand side of the terminal. No need to look at the touchscreen when operating the machine.



# DUPLEX 400 SERIES SILAGE SPREADERS

*My way of Farming!*

**Duplex 400**

Working width: 3.15-4.25m





## Silage *Spreaders*

### **Fastacting silage spreaders**

The Vicon Duplex 400 are fastacting silage spreaders. With an enormous capacity, they easily and efficiently process the large amounts of grass, supplied by modern chaff and pick-up vehicles.

The two rotating drums ensure good and rapid distribution of grass silage, providing sufficient time for compaction of the clamp. The stable construction and the application of high-grade materials of the Duplex 400 silage spreader, guarantee a long service life and low maintenance costs.



Duplex 400 can be used as front or rear mounted machine.

### Vicon Duplex 400

The Duplex 400 silage spreader is an easy-to-use machine.

Using a pinhole connection the working width can be adjusted to 4.25m. The rubber side boards are extremely durable and are operated manually. For transport the side boards are secured, rendering unexpected fold out during transport impossible.

Two drums with aggressive vertical pipes ensure efficient spreading of the crop.



The crop is spread efficiently for an even and flat silo.



The silage spreader can be operated with either side boards up or down.



### The Advantages

- 3.15-4.25m working width and mechanical adjustment of working width.
- Distributes the grass in an even and thin layer at the clamp for the best compression.
- Suitable for front and rear linkage.

“**Compact dimension**  
– easy operation and adjustment”

# Combine Craftsmanship & Modern Technology

## *With our IsoMatch Precision Farming Offering*

*We believe in the freedom to choose your own approach. Precision farming is a way of life. Grow your crops, farm and self, your way.*

*Our precision farming offering consists of innovative and custom made equipment, designed to fit your personal vision and beliefs with respect to the heritage of your profession. Smart equipment accustomed to your way of farming. Now you can carry out the work in a smarter, more efficient and easier way to get the optimum out of your machines and crops, as well as saving time and money in fertiliser, chemicals and seeds.*

**NEW**



**NEW**

### **A new level of comfort**

As tractor steering with IsoMatch AutoDrive-E is handled automatically, you have the freedom to control and monitor your work in an easy way. While the work is more efficient and overlaps are avoided, you can completely focus on the result in the field. (Only in combination with IsoMatch Tellus PRO).

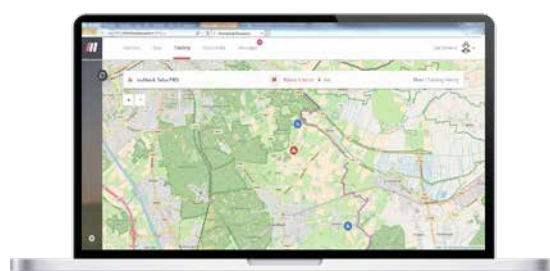
### **New opportunities with farm management**

IsoMatch FarmCentre is the first of a series of telematics solutions. This fleet management solution is applicable for all your ISOBUS machines in combination with an IsoMatch Tellus GO/PRO. Whether you wish to control your fleet, manage tasks remotely or analyse machine data, IsoMatch FarmCentre provides this in an efficient web application, linking implements, tractors, terminals and the cloud in one continuous flow of data and connectivity.

### **Be innovative, Be a PRO**

With its advanced hardware and software features, the IsoMatch Tellus PRO 12-inch terminal provides you with the optimal experience for an all-in-one control system inside the tractor cab including automatic steering. It is the centre for connecting all ISOBUS machines, and a platform for running precision farming applications and Farm Management Systems. It offers everything you need to get the best out of your machines and crop, as well as cost savings in fertiliser, chemicals and seeds by using automatic section control and variable rate control. With the unique dual screen functionality it gives you the opportunity to view and control two machines and/or processes simultaneously.

**NEW**



### Easy Machine Control

The IsoMatch Tellus GO is a 7-inch terminal, especially developed for controlling the machine in a simple way. You are in full control of the machine in exactly the way you want. Easily set up the machine with the soft keys via the 7-inch touch screen and for optimal control while driving simply use the hard keys and rotary switch. Controlling the implement has never been so easy.

### The right solution for perfect end results

The IsoMatch GEOCONTROL precision farming application includes Manual Guidance and Data Management free of charge. It is possible to expand this application with Section Control and/or Variable Rate Control.



**“Discover New Opportunities  
Choose Your Own Approach**

**NEW**



### IsoMatch Grip

This ISOBUS auxiliary device is made for comfortable machine control and efficient farming. Its ergonomic shape and the complete freedom of assigning and controlling a total of 44 implement functions from one device are unique in the market today. From your fingertips you have endless possibilities to operate all machine functions as desired.

**NEW**



### IsoMatch Global PRO

GPS antenna system with RTK precision (2-3 cm) for the highest accuracy possible. It brings you manual guidance, automatic section control, variable rate control and automatic steering in combination with IsoMatch GEOCONTROL.

### IsoMatch (Multi)Eye

Connect up to 4 cameras to the IsoMatch Universal Terminals. It gives you full control and overview of the machine operation from every side you want.



### IsoMatch InLine

Light bar for easy manual guidance. Mounted in the line of sight, you can easily see the distance from the A-B line and to which direction you should steer for the optimum position.



## Original Parts & Service

### ***It's What Makes Your Machine a Vicon***



*Original Vicon Parts are important pieces of your machine's DNA. Our parts are produced with the same strict specifications as the machine itself, and therefore guaranteed to work and fit as intended to keep you running at optimal pace.*

*We regard each sale of a Vicon machine as the start of a long term relationship. Our mission is to provide you with a safety net of parts and service to make sure your investment is running strong in the fields. Do not compromise the authenticity of your machine with cheap solutions, Original Vicon parts are the guaranteed solution for the optimal Vicon experience.*

**Your Parts Specialist**

Your local Vicon dealer is always ready to assist you with parts and service. He is a loyal ally who knows every inch of your machine. Your dealer has all the parts you need, and will also have the facilities to service your machine.

**“Original Parts,  
the true DNA  
of your machine”**

**Always Available**

Time is money, and we know the importance of receiving the right parts at the right time! Your Vicon dealer is supported by a massive distribution network to supply you with exactly what you need, when you need it.

**Easy Access To Information**

Are you looking for a complete overview of parts for your machine? Maybe you are searching for more technical information? Our Online Search Database, *Quest*, provides all information available for your machine. Various documentation like Parts Manuals, Operation Manuals, Software updates and FAQ's, it is all there. *Quest* is available in several different languages and can be accessed wherever and whenever. All answers are easy to find – just a few clicks away !

# Facts

Model Rotex	Rotor Loader Wagons					
	402	400	452	450	552	550
<b>Body design</b>						
Load capacity to DIN 11741 (average) (m³)	19.9/22.9/26 (40)	23.1/26.1/29.2 (40)	26.1/29.4 (45)	29.3/32.6 (45)	32.4 (55)	35.6 (55)
<b>Pickup / drawbar</b>						
Pick-up total width / work width (m)	2.00/1.83	2.00/1.83	2.00/1.83	2.00/1.83	2.00/1.83	2.00/1.83
Tine rows / tine spacing (no./mm)	6 / 55	6 / 55	6 / 55	6 / 55	6 / 55	6 / 55
Drawbar load rating (kg)	3,000 ● / 2,000 O					
Drawbar suspension	0	0	0	0	0	0
Pickup/art. drawbar ground clearance (mm)	300 / 700	300 / 700	300 / 700	300 / 700	300 / 700	300 / 700
<b>Rotor / cutting system</b>						
Rotor width (tine to tine / full width) (m)	1.42 / 1.50	1.42 / 1.50	1.42 / 1.50	1.42 / 1.50	1.42 / 1.50	1.42 / 1.50
Rotor diameter (mm)	800	800	800	800	800	800
Rotor tine rows in chevron formation (no.)	9	9	9	9	9	9
No. of knives on cutting system	35	35	35	35	35	35
Theoretical chop length (mm)	40	40	40	40	40	40
<b>Specification</b>						
Drawbar / option	Low ● / high O					
Feed rollers	2 serial		2 serial		2 serial	
Tellus Go operator box / Tellus operator box	0 / 0	0 / 0	0 / 0	0 / 0	0 / 0	0 / 0
<b>Weights</b>						
Kerb weight (kg)	6,350	5,950	7,200	6,700	7,800	7,300
Kerb payload (kg)	7,650	8,050	9,800	10,300	12,200	12,700
Gross vehicle weight rating (kg)	14,000	14,000	17,000	17,000	20,000	20,000
<b>Axle aggregate</b>						
Tandem axles with caster axle	-	-	0	0	●	●
Tyres (standard)	500/50-17	500/50-17	550 / 60-22.5	550 / 60-22.5	600 / 55-22.5	600 / 55-22.5
Maximum speed (km/h)	40	40	40	40	40	40
<b>Dimensions</b>						
Length / width (m)	8.63/2.55	8.13/2.55	8.82/2.54	8.82/2.54	9.50/2.54	9.50/2.54
Height (standard tyres fitted) (m)	3.23/3.48/3.75	3.23/3.48/3.75	3.68 / 3.93	3.68 / 3.93	3.93	3.93
Platform height (m)	1.28	1.28	1.45	1.45	1.50	1.50
Body height / length / width (m)	1.95(2.20/2.47) x5.45x2.18	1.95(2.20/2.47) x5.45x2.18	2.30(2.48) / 5.70 / 2.18	2.23(2.48) / 6.10 / 2.18	2.48 / 6.49 / 2.18	2.48 / 6.89 / 2.18
Tractor power (kW/hp)	66 (90)	66 (90)	89 (120)	89 (120)	111 (150)	111 (150)
Chain-and-slat conveyor / automatic loading system	4 chains, 10mm, 10 t breaking load					

● Standard O Optional \* Minimum requirement on weight of tractor.



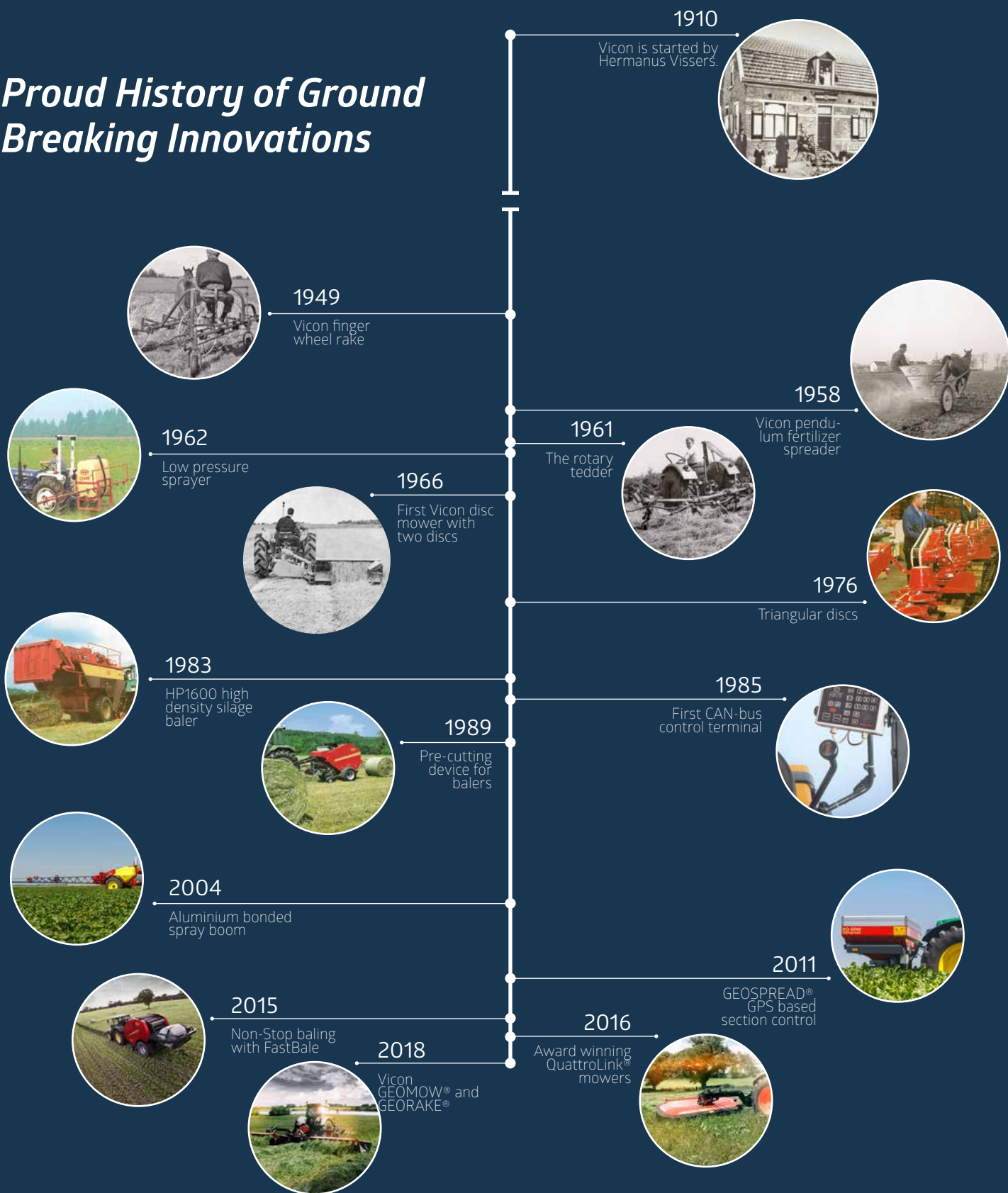
Model Duplex	Silage Spreaders 400
<b>Dimensions &amp; Weight</b>	
Working Width (m)	3.15-4.25
Transport Width (m)	2.99
Length (m)	1.80
Weight (kg)	650
<b>Attachment to tractor</b>	
Linkage	3 pt., Cat II or delta connector
PTO Speed (rpm)	540
<b>Operation</b>	
Silo Fork	-
Mechanical Adjustment of Working Width	●
Hydraulic Adjustment of Working Width	-
Lighting Kit	-
Front and rear Mounting	●
● Standard   0 Optional   - Not available	

Information provided in this brochure is made for general information purposes only and for worldwide circulation. Inaccuracies, errors or omissions may occur and the information may thus not constitute basis for any legal claim against Kverneland Group. Availability of models, specifications and optional equipment may differ from country to country. Please consult your local dealer. Kverneland Group reserves the right at any time to make changes to the design or specifications shown or described, to add or remove features, without any notice or obligations. Safety devices may have been removed from the machines for illustration purposes only, in order to better present functions of the machines. To avoid risk of injury, safety devices must never be removed. If removal of safety devices is necessary, e.g. for maintenance purposes, please contact proper assistance or supervision of a technical assistant.

© Kverneland Group Kerteminde AS



# Proud History of Ground Breaking Innovations



*My way of Farming!*



[www.vicon.eu](http://www.vicon.eu)