

# SINGLE DRUM VIBRATORY ROLLER

# max ◦ com **SERIE 7**

# R716



WEIGHT	
Maximum working weight	16.200 Kgs
Weight according to CECE standard	15.650 Kgs
Weight at drum	9.600 Kgs
Weight at wheel	6.600 Kgs

COMPACTION	
Drum diameter	1.525 mm
Drum width	2.100 mm
Drum shell thickness	40 mm
Static linear load	45,80 kgs/cm
UNE 115-435 classification	VM4

VIBRATION CHARACTERISTICS	
<b>High excentric moment</b>	
Frequency	27 hz (1.650 rpm)
Nominal amplitude	1,85 mm
Centrifugal force	31.896 kps
Mechanical impact	3,10 j/cm
Vibration power	25,48 kw
<b>Low excentric moment</b>	
Frequency	27,5 hz (2.650 rpm)
Nominal amplitude	0,60 mm
Centrifugal force	10.853 kps
Vibration power	9,35 kw

TYRES	
Model	23,1" x 26"- 10 PLY-ANS

INCLINE SURMOUNTABLE	
With vibration	45%
Without vibration	50%

ENGINE	
Engine	John & Deere
Brand	6068TF275
No. of cylinders	6
Cooling system	Water
Capacity	3,90 l
Power (SAE J1349) 2,400 rpm	123 kw (165 hp)
Electrical system	2 batteries 12V-155A
Injection system	electronic CAN-BUS
Gas-oil tank capacity	441 l

AIR FILTERING SYSTEM	
Main filter and safety (98% efficient)	Paper

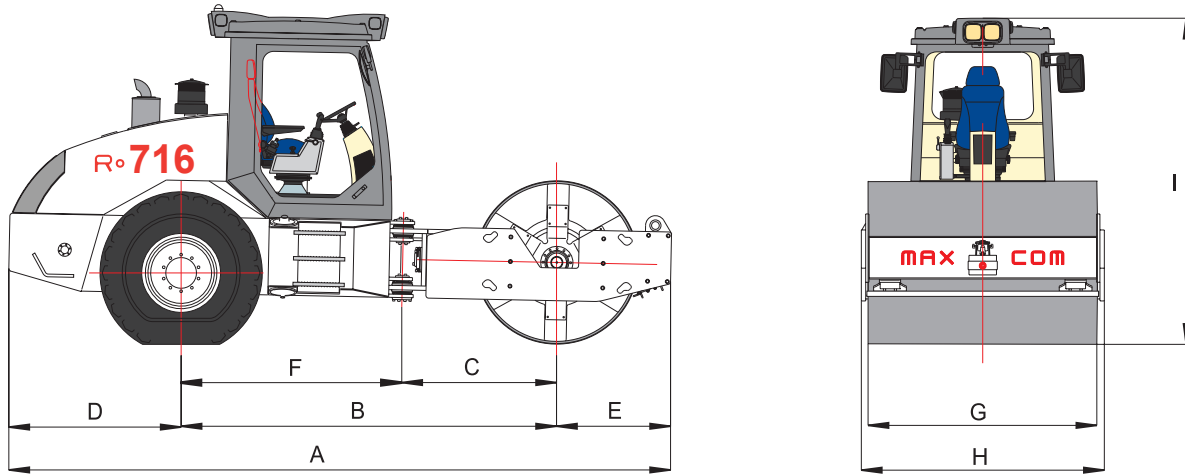
SHIFT	
Type	Hydrostatic

SPEEDS	
First	7 km/h
Second	14 km/h

STEERING SYSTEM	
Type	Hydrostatic
Angle of steering turn	+/- 30 °
Angle of oscillation	+/- 12 °
Radius of internal turning	5,2 m
Radius of external turning	7,7 m

BRAKE SYSTEM	
MULTIDISCS IN OIL BATH	
HYDRAULIC OPERATION ON ROLLER AND WHEELS	
Service	Hydrostatic
Parking	springs w/preload
Emergency	service + parking

**R716**

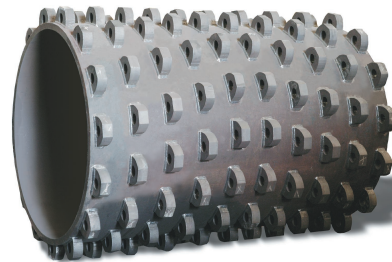


MEASUREMENTS	A	B	C	D	E	F	G	H	I
mm	6.130	3.472	1.446	1.578	1.080	2.026	2.100	2.335	3.000

**STANDARD EQUIPMENT**

- Doors on both sides of the cabin
- Seat with pneumatic cushioning
- Air conditioning and heating
- Driving and working lights
- Front windscreen wipers
- Two wide-view mirrors
- Radio CD with 2 speakers
- Revolving beacon
- Reverse acoustic alarm
- Heat and acoustic insulation
- Fire extinguisher in the cabin
- CAN-BUS LCD screen
- Electric-hydraulic flip-up engine bonnet
- Air pre-filter with turbine

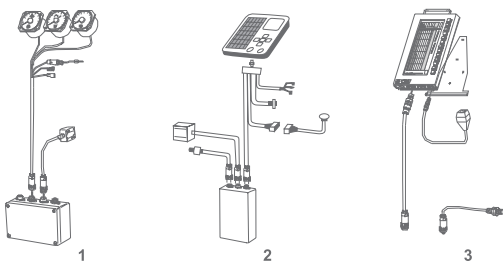
**OPTIONAL**



**PAD FOOT DRUM**

Load per pad	99 kg/cm <sup>2</sup>
Number of pads	150 u
Pad height	100 mm

**OPTIONAL**



**CONTINUOUS COMPACTION CONTROL**

1. CMV+RMV+HZ (compactometer + extent + frequency)
2. Compactometer with digital processor
3. Continuous compaction control

**OTHER OPTIONS**

- Smooth wheels for ballast
- Pneumatic smooth wheels
- Sheep's foot wheels
- Sheepsfoot sleeving
- Tachometer
- Additional soundproofing
- Levelling blade
- Water tank for sprinkling
- Compactometer



MAQUINARIA PARA OBRAS PUBLICAS

Pol. Ind. Malpica, calle E, nº30  
 50057 Zaragoza (España)  
 Tel. +34 976 57 24 23  
 Fax. +34 976 57 08 43  
 europactor@europactor.com  
 www.europactor.com



The manufacturer reserves the right to make the modifications considered necessary.

