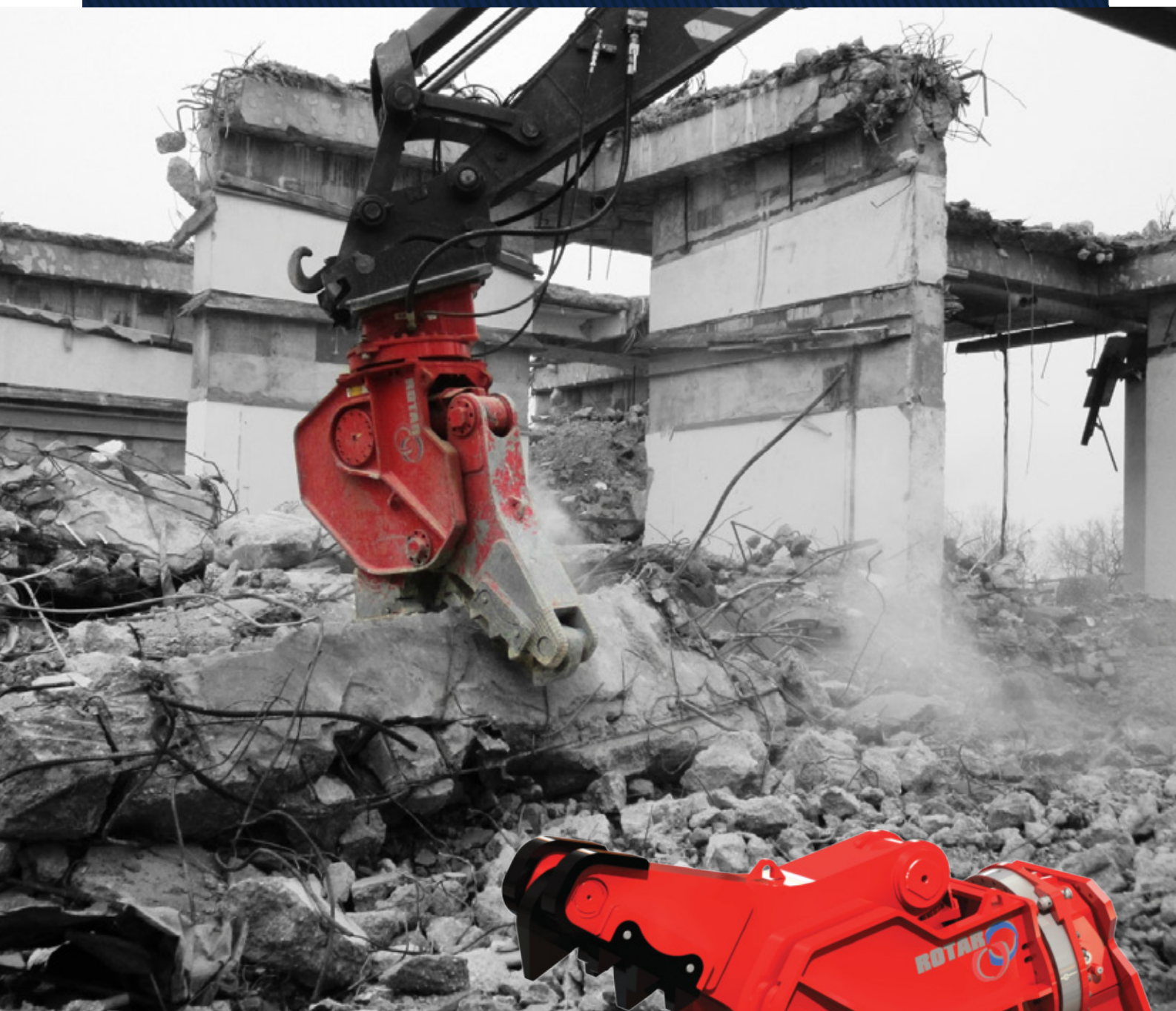


**ROTAR<sup>®</sup>**



**RDP-series**



# RDP

## Rotar Demolition Pulverizer

Incredible cutting powers combined with easily replaceable wear parts make this Rotar Demolition Pulverizer the perfect pulverizer for both primary and secondary demolitions. The RDP series will gnaw its way through any concrete construction.



### Replaceable teeth

The Rotar Demolition Pulverizer has been fitted with replaceable rows of teeth. It is an impressive sight to see these teeth cutting through the extremely tough concrete. The design of the jaws guarantees powerful penetration of the materials

### Headpiece and slewing ring

The RDP series is fitted with a strong rotating headpiece and an over-dimensioned slewing ring. The two hydraulic engines in the headpiece create a high torque, allowing the combi shear to be positioned in any desired way.



### Specially developed speed valve

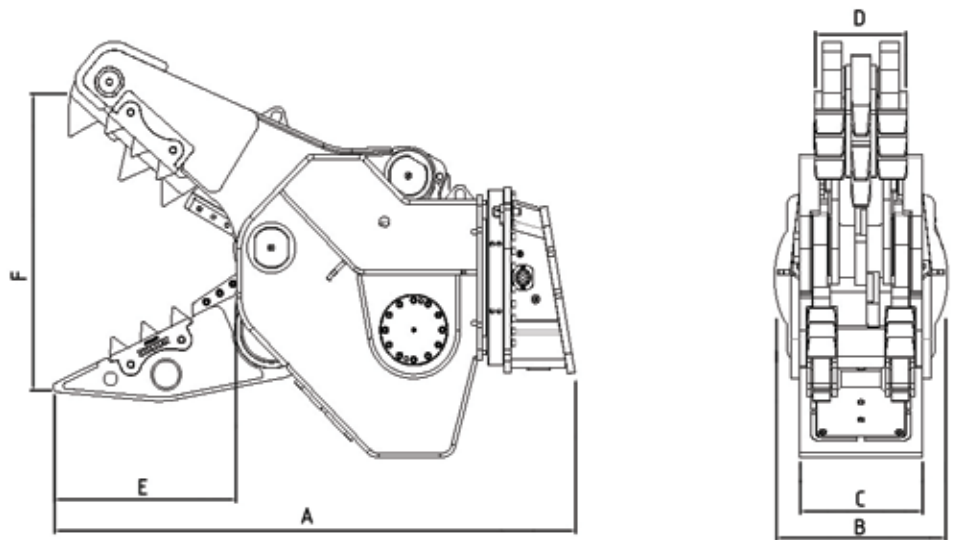
The speed valve developed by Rotar allows the jaws to close quickly and the pulverizer will effortlessly switch from speed to power mode as soon as the job requires cutting power. The pulverizer's body has been assembled from high-grade and wear-resistant materials, making it extremely strong.

### Cross-mounted hydraulic cylinder

The cross-mounted construction of the hydraulic cylinder ensures optimal efficiency of the cutting power and a compact design with a favourable centre of gravity. The large diameter of hoses, bores and pipes reduces the back pressure in the hydraulic system and contributes to the extraordinary feats this pulverizer can pull off.



# Specifications



Rotar Demolition Pulverizer has been fitted with replaceable cutting knives deep in its jaws. These will easily cut the concrete's reinforcement into smaller chunks.

Type RDP	20 S	25 S	32 S	42 S
<b>Information</b>				
Machine class (t)	15 - 25	24 - 35	32 - 50	45 - 70
Weight (kg)*	2100	2765	3100	4500
Cyclis open/close (s.)	1,9 - 1,2	2,2 - 2,4	2,5 - 2,8	2,6 - 2,8
Closing force at tip of jaw 1 (t)	62	70	95	105
Closing force at tip of jaw 2 (t)	100	107	152	195
Rotar Hole-pattern	140-150	140-150	140-150	150
<b>Dimensions</b>				
Dimension A (mm)	2100	2270	2458	2640
Dimension B (mm)	760	760	760	880
Dimension C (mm)	390	479	495	556
Dimension D (mm)	310	350	398	470
Dimension E (mm)	750	822	867	930
Dimension F (mm)	845	974	1000	1230
Dimension G (mm)	200	200	200	250
<b>Hydraulic</b>				
Max. operating pressure cylinder (bar)	350	350	350	350
Max. operating pressure motor (bar)	170	170	170	170
Oil volume cylinder (L/min)	150 - 250	150 - 250	250 - 300	250 - 300
Oil volume motor (L/min)	40 - 60	40 - 60	40 - 60	40 - 60

\* Weight exclusive adapter with bracket

## Rotar International BV

**Address** Schering 27, 8281 JW Genemuiden (NL)  
**Postal address** Postbus 174, 8280 AD Genemuiden (NL)

**Telephone** +31(0) 38 385 54 71  
**Fax** +31(0) 38 385 54 02

**E-mail** info@rotar.com  
**Website** www.rotar.com



**GET THE  
RED CRUSH!**