

K-SERIES WHEEL LOADERS
844K-III



JOHN DEERE



***RELIABLE
MATERIAL MOVERS***



+



RELIABLE

PRODUCTIVE



AGGREGATE-HANDLER OPTION

ROCK STARS.



CRUSH IT.

With larger material-handling buckets and beefed-up performance specs, our 844K-III Loaders deliver serious productivity. And they're built rock solid to take on the toughest aggregate and material-moving applications. Armed with insights from our Customer Advocate Group, we designed these productive machines to be even more rugged and reliable. We equipped them with improved hydraulic plumbing and advanced onboard diagnostics with push-button customization of machine operation and response. These are just a few of the ways our latest models help you increase productivity and uptime, while lowering daily operating costs. Read on to learn how the 844K-III's will benefit your operation.

TOP OF THE HEAP.

BUILT FOR FASTER CYCLES AND LONG-TERM DURABILITY

844K-III Loaders heap heavier and haul more. And with redesigned hydraulic plumbing and beefier components, they're more reliable, too.

Better transmission shift logic and adaptive clutch cutoff

Improved transmission shift logic and adaptive clutch cutoff help increase productivity and deliver smooth gear changes in a variety of jobsite conditions.

Steel tubing replaces hosing

Over three dozen steel tubes replace 81 ft. of hoses, reducing friction and the number of troublesome connection points.

Low-profile tire option

Want to increase the traction, flotation, and stability of your 844K-III? Spec the low-profile tire option.

Strong engine power

Productively capable engine horsepower and peak torque in the proven John Deere PowerTech™ diesel tackle tough stockpiling and digging tasks. Also ably meets EPA Final Tier 4/EU Stage IV emissions.



**OVER 3 DOZEN
STEEL TUBES**

REPLACE 81 FT. OF HOSING



STANDOUT FEATURE

AGGREGATE- HANDLER OPTION



*CUTS LOADING TIME
BY 30%*

WITH REDUCED FUEL CONSUMPTION

POWER AND CAPACITY.

CHECK THIS ONE OFF YOUR BUCKET LIST.

With its larger material-handling buckets, the 844K-III Aggregate Handler can load out 24 short tons of non-heaping, lower-density processed matter in just two passes. With heavier materials, achieving 12 tons is not a problem.



✓ **NARROWER, INTEGRATED
SPILL GUARD**

✓ **LARGER CAPACITIES**
7.1 and 7.5 m³ (9.3 and 9.8 cu. yd.)

✓ **CURVED SIDE CUTTERS
FOR IMPROVED
LOAD RETENTION**

✓ **BETTER
LOAD
VISIBILITY**

More power into the pile

12-percent larger tilt cylinders deliver more breakout force. Increased hydraulic forces, engine power, and torque make quicker work of tough aggregate piles.

Larger material-handling buckets

Bigger material-handling buckets with integrated spill guards reduce fill time in processed aggregates, better retain loads, and ultimately conserve fuel.

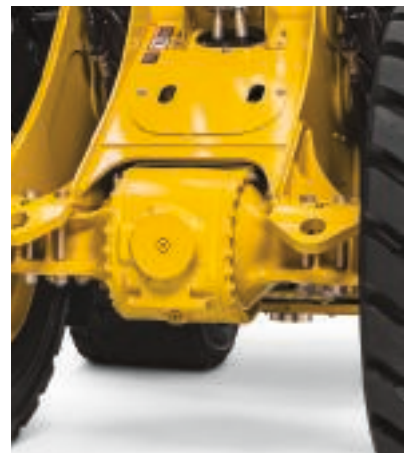
Surer footing

Slip-resistant steps, platforms, and handrails provide uninterrupted three-point access around the machine.



HARD WORK MADE EASY.

TAKE A LOAD OFF



Improved balance and stability

Low center of gravity and optimized fore-and-aft balance deliver solid stability and full-turn tipping-load capacities.

Fuel-sipping diesels

Fluid-efficient John Deere PowerTech engines provide generous displacement, power, and lugging ability.

Coated against corrosion

Cab surfaces have been treated with extra corrosion resistance, improving durability for the long haul.

Quick ground speed and boom lift

Reliable powertrain and hydraulic performance helps maintain quick ground speed and boom lift, even on steep ramps, for faster cycles.

Low-effort joystick control

Standard joystick steering boosts fatigue-beating comfort and is ideal for V-pattern truck loading. It adapts to ground speed to deliver smooth, low-effort control, even during load-and-carry operations.

Faster cycles and better fuel economy

Standard five-speed transmission with torque-converter lockup in gears 2–5 increases acceleration, speeds cycles, and optimizes power and fuel efficiency during transport, roading, and ramp climbing.

Multiple axle configurations

Axle choices include manually actuated front differential lock with conventional rear axle, front and rear differential locks, or conventional rear and front axles. Automatic locking is optional for axles with locking differentials.

THE BUCK STOPS HERE.

KEEPING YOU ON THE JOB.

Keep your cool

Quad-Cool™ design places coolers in a unique boxed configuration that's isolated from engine heat, for increased efficiency and durability. Standard hydraulic reversing fan automatically reverses at predetermined intervals, or can be programmed through the monitor, to eject debris from the cooler cores.

Easy diagnostics

Color-coded fluid-sample and diagnostic test ports speed preventative maintenance and troubleshooting. If something goes wrong, the easy-to-navigate LCD monitor displays diagnostic messages and offers possible solutions to get you back up and running quickly.

Shorter hoses with better routing

Bulkhead fittings eliminate long hoses, simplifying replacement and component exchange. Hydraulic tank on the 844K-III is positioned behind the cab for easy access, and hoses have been routed away from other vital operating components, for longer wear life.

Reduced tire wear and cost

Deere-exclusive integrated tire monitoring reports pressures and temperatures on the monitor and remotely through JDLink™, to help reduce tire wear and replacement cost.



Keep downtime down with
ULTIMATE UPTIME

Ultimate Uptime, featuring John Deere WorkSight™, is a customizable support solution available exclusively from your Deere dealer. This flexible offering maximizes equipment availability with standard John Deere WorkSight capabilities that can help prevent future downtime and speed repairs when needed. In addition to the base John Deere WorkSight features, our dealers work with you to build an uptime package that meets the specific needs of your machine, fleet, project, and business, including customized maintenance and repair agreements, onsite parts availability, extended warranties, fluid sampling, response-time guarantees, and more.

Get valuable insight with
JOHN DEERE WORKSIGHT

John Deere WorkSight is an exclusive suite of telematics solutions that increases uptime while lowering operating costs. At its heart, JDLink machine monitoring provides real-time utilization data and alerts to help you maximize productivity and efficiency while minimizing downtime. Remote diagnostics enable your dealer to read codes and record performance data without a trip to the jobsite.





844K-III SPECIFICATIONS

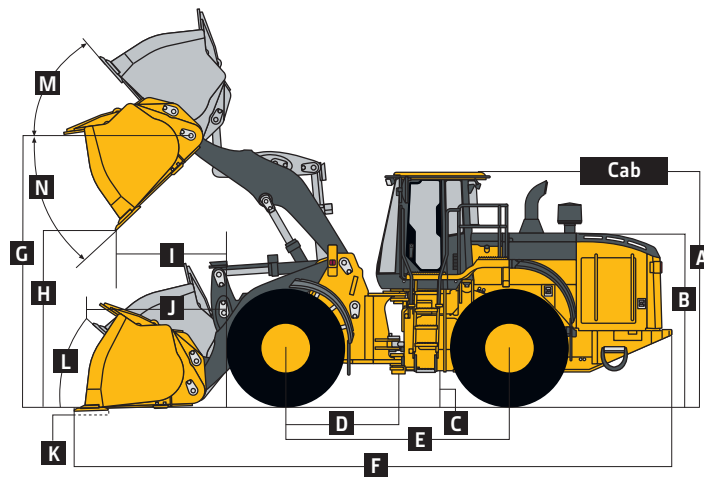
Engine	844K-III		844K-III AGGREGATE HANDLER	
Manufacturer and Model	John Deere PowerTech™ PSS 6135		John Deere PowerTech PSS 6135	
Non-Road Emission Standard	EPA Final Tier 4/EU Stage IV		EPA Final Tier 4/EU Stage IV	
Cylinders	6		6	
Valves per Cylinder	4		4	
Displacement	13.5 L (824 cu. in.)		13.5 L (824 cu. in.)	
Net Peak Power (ISO 9249)	283 kW (380 hp) at 1,600 rpm		299 kW (401 hp) at 1,600 rpm	
Net Peak Torque (ISO 9249)	1804 Nm (1,331 lb.-ft.) at 1,000 rpm		1870 Nm (1,379 lb.-ft.) at 1,000 rpm	
Net Torque Rise	44%		44%	
Fuel System	Mechanically actuated electronic unit injectors		Mechanically actuated electronic unit injectors	
Lubrication	Full-flow spin-on filter and integral cooler		Full-flow spin-on filter and integral cooler	
Aspiration	Series turbocharged, charge air cooled		Series turbocharged, charge air cooled	
Air Cleaner	Dual-element dry type, restriction indicator in cab monitor for service; additional centrifugal engine pre-cleaner			
Cooling	844K-III / 844K-III AGGREGATE HANDLER			
Fan Drive	Hydraulically driven, proportionally controlled, fan aft of coolers; automatic reversing fan drive			
Electrical				
Electrical System	24 volt with 130-amp alternator			
Batteries (2 – 12 volt)	1,400 CCA (each)			
Transmission System				
Type	Countershaft-type PowerShift™			
Torque Converter	Single stage, dual phase with freewheeling stator			
Shift Control	Electronically modulated, adaptive, load and speed dependent			
Operator Interface	Steering-column or joystick-mounted F-N-R and gear-select lever; Quick-Shift button on hydraulic lever			
Shift Modes	Manual/auto (1st–5th or 2nd–5th); Quick-Shift button with 2 selectable modes: kick-down or kick-up/down; and adaptive clutch cutoff			
	<i>Standard 5-Speed with Lockup Torque Converter</i>		<i>Optional 4-Speed*</i>	
Maximum Travel Speeds (with 875/65R29 L3 tires)	<i>Forward</i>	<i>Reverse</i>	<i>Forward</i>	<i>Reverse</i>
Range 1	6.6 km/h (4.1 mph)	6.6 km/h (4.1 mph)	6.6 km/h (4.1 mph)	6.6 km/h (4.1 mph)
Range 2	13.0 km/h (8.1 mph)	13.0 km/h (8.1 mph)	12.2 km/h (7.6 mph)	12.2 km/h (7.6 mph)
Range 3	20.1 km/h (12.5 mph)	29.4 km/h (18.3 mph)	18.8 km/h (11.7 mph)	26.1 km/h (16.2 mph)
Range 4	29.4 km/h (18.3 mph)	N/A	40.0 km/h (24.9 mph)	N/A
Range 5	40.0 km/h (24.9 mph)	N/A	N/A	N/A
*Not available for Aggregate Handler configuration.				
Axles/Brakes	844K-III		844K-III AGGREGATE HANDLER	
Final Drives	Heavy-duty mid-board planetary		Heavy-duty mid-board planetary	
Differentials	Conventional differential front and rear – standard; hydraulic locking front with conventional rear – optional; dual locking front and rear – optional		Conventional front and rear axles	
Rear Axle Oscillation, Stop to Stop				
With 29.5 R 25, 1 Star L3 Tires	26 deg. (13 deg. each direction)		N/A	
With 875/65R29 L3 Tires	16 deg. (8 deg. each direction)		16 deg. (8 deg. each direction)	
Service Brakes (conform to ISO 3450)	Outboard, forced oil cooled, multi disc		Outboard, forced oil cooled, multi disc	
Parking Brakes (conform to ISO 3450)	Automatic spring applied, hydraulically released, sealed wet multi disc			
Tires/Wheels (see pages 14 and 15 for complete tire adjustments)	844K-III / 844K-III AGGREGATE HANDLER			
	<i>Tread Width</i>		<i>Width Over Tires</i>	
Michelin 875/65R29, 1 Star L-3	2440 mm (96.1 in.)		3408 mm (134.2 in.)	
Serviceability				
Refill Capacities				
Fuel Tank (with ground-level fueling)	534 L (141 gal.)			
Diesel Exhaust Fluid (DEF)	26.3 L (6.9 gal.)			
Cooling System	78.75 L (83.2 qt.)			
Engine Oil with Vertical Spin-On Filter	40 L (42.3 qt.)			
Transmission Reservoir with Vertical Filter	28 L (29.5 qt.)			
Axle Oil (front and rear, each)	68 L (72 qt.)			
Hydraulic Reservoir and Filter	184.3 L (194.7 qt.)			
Park Brake Oil (wet disc)	0.7 L (24 oz.)			
Hydraulic System/Steering	844K-III		844K-III AGGREGATE HANDLER	
Pump (loader and steering)	2 variable-displacement, load-sensing axial-piston pumps; closed-center system			
Maximum Rated Flow at 6895 kPa (1,000 psi) at 2,000 rpm	548 L/m (145 gpm)		548 L/m (145 gpm)	
System Relief Pressure				
Loader	24 132 kPa (3,500 psi)		27 580 kPa (4,000 psi)	
Steering	24 132 kPa (3,500 psi)		24 132 kPa (3,500 psi)	
Loader Controls	2-function valve; single- or dual-lever controls; control lever lockout feature; optional 3rd-function valve with auxiliary levers		2-function valve; single- or dual-lever controls; control lever lockout feature	

844K-III SPECIFICATIONS



Hydraulic System/Steering (continued)	844K-III	844K-III AGGREGATE HANDLER
Steering (conforms to ISO 5010)		
Type	Power, fully hydraulic; single-lever control and adjustable wristrest with conventional steering wheel override	
Articulation Angle	80-deg. arc (40 deg. each direction)	80-deg. arc (40 deg. each direction)
Turning Radius (measured to centerline of outside tire)	6.30 m (20 ft. 8 in.)	6.30 m (20 ft. 8 in.)
Hydraulic Cycle Times		
Raise	6.1 sec.	6.1 sec.
Dump	1.9 sec.	1.9 sec.
Lower (float down)	3.6 sec.	3.6 sec.
Total	11.6 sec.	11.6 sec.

844K-III Dimensions and Specifications with Pin-On Bucket



844K-III LOADER WITH PIN-ON BUCKET

Dimensions with Bucket	5.5-m ³ (7.25 cu. yd.) general-purpose teeth and segments			5.7-m ³ (7.5 cu. yd.) general-purpose enhanced production teeth and segments			6.1-m ³ (8.0 cu. yd.) material-handling enhanced production		4.8-m ³ (6.3 cu. yd.) spade-nose rock with wear liners	
	bolt-on edge	JAGZ™	JAGZ™	bolt-on edge	JAGZ™	JAGZ™	bolt-on edge	JAGZ™	bolt-on edge	segments
A Height to Top of Cab	3.76 m (12 ft. 4 in.)	3.76 m (12 ft. 4 in.)	3.76 m (12 ft. 4 in.)	3.76 m (12 ft. 4 in.)	3.76 m (12 ft. 4 in.)	3.76 m (12 ft. 4 in.)	3.76 m (12 ft. 4 in.)	3.76 m (12 ft. 4 in.)	3.76 m (12 ft. 4 in.)	3.76 m (12 ft. 4 in.)
B Hood Height	2.74 m (9 ft. 0 in.)	2.74 m (9 ft. 0 in.)	2.74 m (9 ft. 0 in.)	2.74 m (9 ft. 0 in.)	2.74 m (9 ft. 0 in.)	2.74 m (9 ft. 0 in.)	2.74 m (9 ft. 0 in.)	2.74 m (9 ft. 0 in.)	2.74 m (9 ft. 0 in.)	2.74 m (9 ft. 0 in.)
C Ground Clearance	463 mm (18.2 in.)	463 mm (18.2 in.)	463 mm (18.2 in.)	463 mm (18.2 in.)	463 mm (18.2 in.)	463 mm (18.2 in.)	463 mm (18.2 in.)	463 mm (18.2 in.)	463 mm (18.2 in.)	463 mm (18.2 in.)
D Length from Centerline to Front Axle	1.85 m (6 ft. 1 in.)	1.85 m (6 ft. 1 in.)	1.85 m (6 ft. 1 in.)	1.85 m (6 ft. 1 in.)	1.85 m (6 ft. 1 in.)	1.85 m (6 ft. 1 in.)	1.85 m (6 ft. 1 in.)	1.85 m (6 ft. 1 in.)	1.85 m (6 ft. 1 in.)	1.85 m (6 ft. 1 in.)
E Wheelbase	3.70 m (12 ft. 2 in.)	3.70 m (12 ft. 2 in.)	3.70 m (12 ft. 2 in.)	3.70 m (12 ft. 2 in.)	3.70 m (12 ft. 2 in.)	3.70 m (12 ft. 2 in.)	3.70 m (12 ft. 2 in.)	3.70 m (12 ft. 2 in.)	3.70 m (12 ft. 2 in.)	3.70 m (12 ft. 2 in.)
F Overall Length, Bucket on Ground	9.71 m (31 ft. 10 in.)	9.97 m (32 ft. 9 in.)	9.71 m (31 ft. 10 in.)	9.79 m (32 ft. 1 in.)	10.04 m (32 ft. 11 in.)	9.79 m (32 ft. 1 in.)	9.86 m (32 ft. 4 in.)	9.86 m (32 ft. 4 in.)	9.89 m (32 ft. 5 in.)	9.93 m (32 ft. 7 in.)
G Height to Hinge Pin, Fully Raised	4.62 m (15 ft. 2 in.)	4.62 m (15 ft. 2 in.)	4.62 m (15 ft. 2 in.)	4.62 m (15 ft. 2 in.)	4.62 m (15 ft. 2 in.)	4.62 m (15 ft. 2 in.)	4.62 m (15 ft. 2 in.)	4.62 m (15 ft. 2 in.)	4.62 m (15 ft. 2 in.)	4.62 m (15 ft. 2 in.)
H Dump Clearance, 45 deg., Full Height	3.28 m (10 ft. 9 in.)	3.11 m (10 ft. 2 in.)	3.28 m (10 ft. 9 in.)	3.23 m (10 ft. 7 in.)	3.06 m (10 ft. 0 in.)	3.23 m (10 ft. 7 in.)	3.18 m (10 ft. 5 in.)	3.18 m (10 ft. 5 in.)	3.17 m (10 ft. 5 in.)	3.15 m (10 ft. 4 in.)
I Reach, 45-deg. Dump, Full Height	1.46 m (4 ft. 9 in.)	1.62 m (5 ft. 4 in.)	1.46 m (4 ft. 9 in.)	1.52 m (5 ft. 0 in.)	1.68 m (5 ft. 6 in.)	1.52 m (5 ft. 0 in.)	1.57 m (5 ft. 2 in.)	1.57 m (5 ft. 2 in.)	1.60 m (5 ft. 3 in.)	1.63 m (5 ft. 4 in.)
J Reach, 45-deg. Dump, 2.13-m (7 ft. 0 in.) Clearance	2.27 m (7 ft. 5 in.)	2.35 m (7 ft. 9 in.)	2.26 m (7 ft. 5 in.)	2.30 m (7 ft. 7 in.)	2.39 m (7 ft. 10 in.)	2.30 m (7 ft. 7 in.)	2.33 m (7 ft. 8 in.)	2.33 m (7 ft. 8 in.)	2.36 m (7 ft. 9 in.)	2.38 m (7 ft. 10 in.)
K Maximum Digging Depth	117 mm (4.6 in.)	117 mm (4.6 in.)	117 mm (4.6 in.)	117 mm (4.6 in.)	119 mm (4.6 in.)	117 mm (4.6 in.)	124 mm (4.9 in.)	125 mm (4.9 in.)	109 mm (4.3 in.)	109 mm (4.3 in.)
L Maximum Rollback at Ground Level	40.3 deg.	40.3 deg.	40.3 deg.	40.2 deg.	40.2 deg.	40.2 deg.	40.2 deg.	40.2 deg.	40.3 deg.	40.3 deg.
M Maximum Rollback, Boom Fully Raised	56.3 deg.	56.3 deg.	56.3 deg.	54.8 deg.	54.8 deg.	54.8 deg.	54.8 deg.	54.8 deg.	56.3 deg.	56.3 deg.
N Maximum Bucket Dump Angle, Fully Raised	46.1 deg.	46.1 deg.	46.1 deg.	46.2 deg.	46.2 deg.	46.2 deg.	46.2 deg.	46.2 deg.	46.1 deg.	46.1 deg.
Loader Clearance Circle, Bucket Carry Position	15.06 m (49 ft. 5 in.)	14.97 m (49 ft. 1 in.)	14.97 m (49 ft. 1 in.)	13.84 m (45 ft. 5 in.)	15.23 m (50 ft. 0 in.)	13.86 m (45 ft. 6 in.)	15.11 m (49 ft. 7 in.)	15.13 m (49 ft. 8 in.)	14.99 m (49 ft. 2 in.)	15.02 m (49 ft. 3 in.)

844K-III Dimensions and Specifications with Pin-On Bucket (continued)

Specifications with Bucket	5.5-m ³ (7.25 cu. yd.) general-purpose			5.7-m ³ (7.5 cu. yd.) general-purpose enhanced production			6.1-m ³ (8.0 cu. yd.) material-handling enhanced production		4.8-m ³ (6.3 cu. yd.) spade-nose rock with wear liners	
	teeth and segments			teeth and segments					teeth and segments	
Cutting Edge Type	bolt-on edge	JAGZ™	JAGZ™	bolt-on edge	JAGZ™	JAGZ™	bolt-on edge	JAGZ™	bolt-on edge	JAGZ™
Capacity, Heaped	5.5 m ³ (7.25 cu. yd.)	5.5 m ³ (7.25 cu. yd.)	5.5 m ³ (7.25 cu. yd.)	5.7 m ³ (7.5 cu. yd.)	5.7 m ³ (7.5 cu. yd.)	5.7 m ³ (7.5 cu. yd.)	6.1 m ³ (8.0 cu. yd.)	6.1 m ³ (8.0 cu. yd.)	4.8 m ³ (6.3 cu. yd.)	4.8 m ³ (6.3 cu. yd.)
Capacity, Struck	4.7 m ³ (6.2 cu. yd.)	4.7 m ³ (6.2 cu. yd.)	4.7 m ³ (6.2 cu. yd.)	4.7 m ³ (6.2 cu. yd.)	4.7 m ³ (6.2 cu. yd.)	4.7 m ³ (6.2 cu. yd.)	5.0 m ³ (6.6 cu. yd.)	5.0 m ³ (6.6 cu. yd.)	4.1 m ³ (5.4 cu. yd.)	4.1 m ³ (5.4 cu. yd.)
Bucket Weight with Bolt-On Cutting Edge	3515 kg (7,749 lb.)	3786 kg (8,347 lb.)	3673 kg (8,098 lb.)	3763 kg (8,296 lb.)	3957 kg (8,724 lb.)	3843 kg (8,472 lb.)	3835 kg (8,455 lb.)	3915 kg (8,631 lb.)	4217 kg (9,297 lb.)	4347 kg (9,583 lb.)
Bucket Width	3.46 m (11 ft. 4 in.)	3.46 m (11 ft. 4 in.)	3.46 m (11 ft. 4 in.)	3.45 m (11 ft. 4 in.)	3.47 m (11 ft. 5 in.)	3.47 m (11 ft. 5 in.)	3.45 m (11 ft. 4 in.)	3.47 m (11 ft. 5 in.)	3.49 m (11 ft. 6 in.)	3.49 m (11 ft. 6 in.)
Breakout Force	21 456 kg (47,302 lb.)	18 431 kg (40,633 lb.)	21 379 kg (47,133 lb.)	19 445 kg (42,687 lb.)	18 788 kg (41,711 lb.)	19 396 kg (42,761 lb.)	18 560 kg (40,918 lb.)	18 508 kg (40,803 lb.)	18 997 kg (41,881 lb.)	18 424 kg (40,618 lb.)
Tipping Load, Straight, No Tire Deflection	25 083 kg (55,298 lb.)	24 749 kg (54,562 lb.)	24 897 kg (54,888 lb.)	24 994 kg (55,102 lb.)	24 738 kg (54,538 lb.)	24 888 kg (54,869 lb.)	24 770 kg (54,608 lb.)	24 663 kg (54,373 lb.)	24 421 kg (53,839 lb.)	24 221 kg (53,398 lb.)
Tipping Load, Straight, with Tire Deflection	23 754 kg (52,369 lb.)	23 424 kg (51,641 lb.)	23 571 kg (51,965 lb.)	23 610 kg (52,051 lb.)	23 355 kg (51,489 lb.)	23 505 kg (51,820 lb.)	23 388 kg (51,562 lb.)	23 283 kg (51,330 lb.)	23 097 kg (50,920 lb.)	22 899 kg (50,484 lb.)
Tipping Load, 37-deg. Partial Turn	22 104 kg (48,731 lb.)	21 769 kg (47,992 lb.)	21 917 kg (48,319 lb.)	21 999 kg (48,499 lb.)	21 743 kg (47,935 lb.)	21 894 kg (48,268 lb.)	21 791 kg (48,041 lb.)	21 684 kg (47,805 lb.)	21 426 kg (47,236 lb.)	21 226 kg (46,795 lb.)
Tipping Load, 40-deg. Full Turn, No Tire Deflection	21 622 kg (47,668 lb.)	21 287 kg (46,930 lb.)	21 435 kg (47,256 lb.)	21 515 kg (47,432 lb.)	21 259 kg (46,868 lb.)	21 409 kg (47,199 lb.)	21 309 kg (46,978 lb.)	21 202 kg (46,742 lb.)	20 941 kg (46,167 lb.)	20 741 kg (45,726 lb.)
Tipping Load, 40-deg. Full Turn, with Tire Deflection	19 956 kg (43,995 lb.)	19 626 kg (43,268 lb.)	19 773 kg (43,592 lb.)	19 782 kg (43,612 lb.)	19 530 kg (43,056 lb.)	19 677 kg (43,380 lb.)	19 578 kg (43,162 lb.)	19 476 kg (42,937 lb.)	19 284 kg (42,514 lb.)	19 086 kg (42,077 lb.)
Rated Operating Load, 50% Full-Turn Tipping Load, with Tire Deflection (conforms to ISO 14397-1)*	9978 kg (21,998 lb.)	9813 kg (21,634 lb.)	9887 kg (21,796 lb.)	9891 kg (21,806 lb.)	9765 kg (21,528 lb.)	9839 kg (21,690 lb.)	9789 kg (21,581 lb.)	9738 kg (21,469 lb.)	9642 kg (21,257 lb.)	9543 kg (21,039 lb.)
Operating Weight	33 808 kg (74,534 lb.)	34 081 kg (75,136 lb.)	33 968 kg (74,887 lb.)	34 059 kg (75,087 lb.)	34 252 kg (75,513 lb.)	34 139 kg (75,264 lb.)	34 131 kg (75,246 lb.)	34 210 kg (75,420 lb.)	34 513 kg (76,088 lb.)	34 642 kg (76,372 lb.)

Loader operating information is based on machine with identified linkage and standard equipment, PowerTech PSS 6135 (EPA Final Tier 4/EU Stage IV) engine, ROPS cab, rear cast bumper counterweight, transmission side-frame guards, bottom guards, standard tires, full fuel tank, and 79-kg (175 lb.) operator. This information is affected by changes in tires, ballast, and different attachments.

*Rated operating capacity based on Deere attachments only.

844K-III Adjustments to Operating Weights and Tipping Loads with Buckets

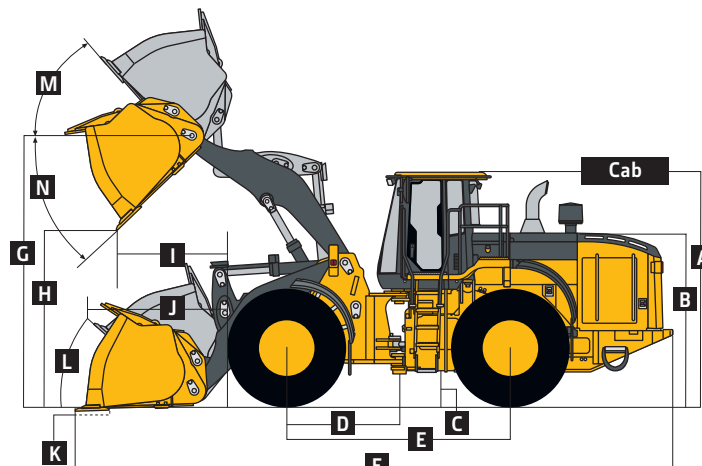
Adjustments to operating weights, tipping loads, and tires are based on machine with pin-on 5.5-m³ (7.25 cu. yd.) general-purpose bucket with bolt-on cutting edge, ROPS cab, rear cast bumper counterweight, transmission side-frame guards, bottom guards, standard tires, full fuel tank, and 79-kg (175 lb.) operator*

Add (+) or deduct (-) kg (lb.) as indicated for loaders with 3-piece rims	Operating Weight	Tipping Load, Straight	Tipping Load, 37-deg. Partial Turn	Tipping Load, 40-deg. Full Turn	Tread Width	Width Over Tires	Vertical Height
Michelin 875/65R29, 1 Star L-3 ⁸	0 kg (0 lb.)	0 kg (0 lb.)	0 kg (0 lb.)	0 kg (0 lb.)	0 mm (0 in.)	0 mm (0 in.)	0 mm (0 in.)
Bridgestone 875/65R29, 1 Star L-3 ⁸	+388 kg (+855 lb.)	+288 kg (+635 lb.)	+259 kg (+571 lb.)	+254 kg (+560 lb.)	0 mm (0 in.)	-31 mm (-1.2 in.)	+16 mm (+0.62 in.)
Michelin 29.5 R 25, 2 Star L-3	-452 kg (-996 lb.)	-336 kg (-741 lb.)	-302 kg (-666 lb.)	-296 kg (-653 lb.)	0 mm (0 in.)	-132 mm (-5.2 in.)	+3 mm (+0.11 in.)
Titan 29.5 R 25, 1 Star L-3	-392 kg (-864 lb.)	-291 kg (-642 lb.)	-262 kg (-578 lb.)	-257 kg (-567 lb.)	0 mm (0 in.)	-133 mm (-5.2 in.)	+4 mm (+0.15 in.)
Bridgestone 29.5 R 25, 1 Star L-3	-336 kg (-741 lb.)	-250 kg (-551 lb.)	-224 kg (-494 lb.)	-220 kg (-484 lb.)	0 mm (0 in.)	-120 mm (-4.7 in.)	+9 mm (+0.3 in.)
Firestone 29.5-25, 28-Ply L-3	+40 kg (+88 lb.)	+30 kg (+66 lb.)	+27 kg (+60 lb.)	+26 kg (+57 lb.)	0 mm (0 in.)	-112 mm (-4.4 in.)	-9 mm (-0.35 in.)
Bridgestone 29.5 R 25, 1 Star L-5 ⁸	+900 kg (+1,984 lb.)	+669 kg (+1,475 lb.)	+601 kg (+1,325 lb.)	+590 kg (+1,301 lb.)	0 mm (0 in.)	-116 mm (-4.6 in.)	+45 mm (+1.77 in.)
Michelin 29.5 R 25, 1 Star L-5 ⁸	+356 kg (+785 lb.)	+264 kg (+582 lb.)	+238 kg (+525 lb.)	+233 kg (+514 lb.)	0 mm (0 in.)	-112 mm (-4.4 in.)	+26 mm (+1.02 in.)
5.5-m ³ (7.25 cu. yd.) General-Purpose Bucket with Wear Liners	+359 kg (+792 lb.)	-378 kg (-834 lb.)	-378 kg (-834 lb.)	-378 kg (-834 lb.)	N/A	N/A	N/A
5.7-m ³ (7.5 cu. yd.) General-Purpose Bucket with Wear Liners	+253 kg (+557 lb.)	-263 kg (-581 lb.)	-264 kg (-584 lb.)	-264 kg (-584 lb.)	N/A	N/A	N/A
6.1-m ³ (8.0 cu. yd.) Material-Handling Bucket with Wear Liners	+253 kg (+557 lb.)	-265 kg (-586 lb.)	-266 kg (-587 lb.)	-267 kg (-588 lb.)	N/A	N/A	N/A

*May change based on vehicle configuration, weight, or tire-pressure adjustments.

⁸Requires 8-deg. rear axle stops.

844K-III AGGREGATE HANDLER Dimensions and Specifications with Pin-On Bucket



844K-III AGGREGATE HANDLER LOADER WITH PIN-ON ENHANCED-PRODUCTION BUCKET

844K-III AGGREGATE HANDLER Dimensions and Specifications with Pin-On Bucket (continued)

	7.1-m ³ (9.3 cu. yd.) material-handling with bolt-on edge	7.5-m ³ (9.8 cu. yd.) material-handling with bolt-on edge
Dimensions with Bucket		
A Height to Top of Cab	3.76 m (12 ft. 4 in.)	3.76 m (12 ft. 4 in.)
B Hood Height	2.74 m (9 ft. 0 in.)	2.74 m (9 ft. 0 in.)
C Ground Clearance	463 mm (18.2 in.)	463 mm (18.2 in.)
D Length from Centerline to Front Axle	1.85 m (6 ft. 1 in.)	1.85 m (6 ft. 1 in.)
E Wheelbase	3.70 m (12 ft. 2 in.)	3.70 m (12 ft. 2 in.)
F Overall Length, Bucket on Ground	10.06 m (33 ft. 0 in.)	10.13 m (33 ft. 3 in.)
G Height to Hinge Pin, Fully Raised	4.62 m (15 ft. 2 in.)	4.62 m (15 ft. 2 in.)
H Dump Clearance, 45 deg., Full Height	3.10 m (10 ft. 2 in.)	3.05 m (10 ft. 0 in.)
I Reach, 45-deg. Dump, Full Height	1.68 m (5 ft. 6 in.)	1.73 m (5 ft. 8 in.)
J Reach, 45-deg. Dump, 2.13-m (7 ft. 0 in.) Clearance	2.41 m (7 ft. 11 in.)	2.44 m (8 ft. 0 in.)
K Maximum Digging Depth	112 mm (4.4 in.)	118 mm (4.6 in.)
L Maximum Rollback at Ground Level	40.2 deg.	40.2 deg.
M Maximum Rollback, Boom Fully Raised	54.8 deg.	54.8 deg.
N Maximum Bucket Dump Angle, Fully Raised	46.2 deg.	46.2 deg.
Loader Clearance Circle, Bucket Carry Position	15.35 m (50 ft. 4 in.)	15.39 m (50 ft. 6 in.)
Specifications with Bucket	7.1-m ³ (9.3 cu. yd.) material-handling with bolt-on edge	7.5-m ³ (9.8 cu. yd.) material-handling with bolt-on edge
Capacity, Heaped	7.1 m ³ (9.3 cu. yd.)	7.5 m ³ (9.8 cu. yd.)
Capacity, Struck	5.9 m ³ (7.7 cu. yd.)	6.2 m ³ (8.1 cu. yd.)
Bucket Weight with Bolt-On Cutting Edge	4096 kg (9,030 lb.)	4218 kg (9,300 lb.)
Bucket Width	3.54 m (11 ft. 7 in.)	3.54 m (11 ft. 7 in.)
Breakout Force	25 288 kg (55,750 lb.)	24 292 kg (53,555 lb.)
Tipping Load, Straight, No Tire Deflection	27 714 kg (61,099 lb.)	27 571 kg (60,784 lb.)
Tipping Load, Straight, with Tire Deflection	26 109 kg (57,560 lb.)	25 965 kg (57,243 lb.)
Tipping Load, 37-deg. Partial Turn	24 333 kg (53,645 lb.)	24 191 kg (53,332 lb.)
Tipping Load, 40-deg. Full Turn, No Tire Deflection	23 786 kg (52,439 lb.)	23 644 kg (52,126 lb.)
Tipping Load, 40-deg. Full Turn, with Tire Deflection	21 765 kg (47,984 lb.)	21 621 kg (47,666 lb.)
Rated Operating Load, 50% Full-Turn Tipping Load, with Tire Deflection (conforms to ISO 14397-1)*	10 883 kg (23,992 lb.)	10 811 kg (23,833 lb.)
Operating Weight	36 311 kg (80,052 lb.)	36 432 kg (80,318 lb.)

Loader operating information is based on machine with identified linkage and standard equipment, PowerTech PSS 6135 (EPA Final Tier 4/EU Stage IV) engine, ROPS cab, rear cast bumper/counterweight, transmission side-frame guards, bottom guards, standard tires, full fuel tank, and 79-kg (175 lb.) operator. This information is affected by changes in tires, ballast, and different attachments.

*Rated operating capacity based on Deere attachments only.

844K-III AGGREGATE HANDLER Adjustments to Operating Weights and Tipping Loads with Buckets

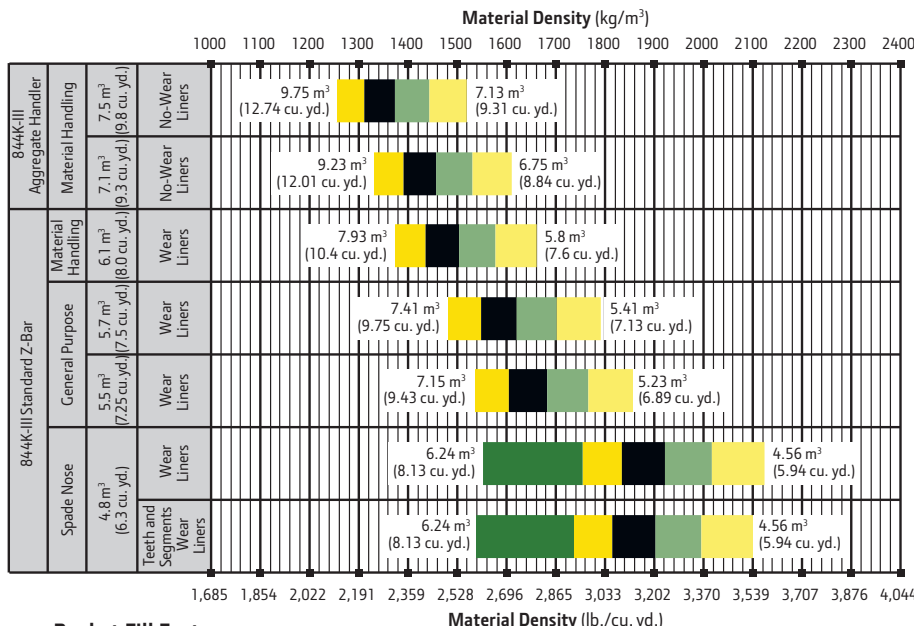
Adjustments to operating weights, tipping loads, and tires are based on machine with pin-on 7.1-m³ (9.3 cu. yd.) material-handling enhanced-production bucket with bolt-on cutting edge, ROPS cab, rear cast bumper/counterweight, transmission side-frame guards, bottom guards, standard tires, full fuel tank, and 79-kg (175 lb.) operator*

Add (+) or deduct (-) kg (lb.) as indicated for loaders with 3-piece rims	Operating Weight	Tipping Load, Straight	Tipping Load, 37-deg. Partial Turn	Tipping Load, 40-deg. Full Turn	Tread Width	Width Over Tires	Vertical Height
Michelin 875/65R29, 1 Star L-3 [®]	0 kg (0 lb.)	0 kg (0 lb.)	0 kg (0 lb.)	0 kg (0 lb.)	0 mm (0 in.)	0 mm (0 in.)	0 mm (0 in.)
Bridgestone 875/65R29, 1 Star L-3 [®]	+388 kg (+855 lb.)	+285 kg (+628 lb.)	+256 kg (+564 lb.)	+251 kg (+553 lb.)	0 mm (0 in.)	+12 mm (+0.47 in.)	+16 mm (+0.62 in.)

*May change based on vehicle configuration, weight, or tire-pressure adjustments.

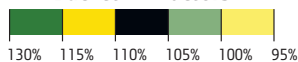
[®]Requires 8-deg. rear axle stops.

Bucket Selection Guides 844K-III / 844K-III AGGREGATE HANDLER



LOOSE MATERIALS	kg/m ³	lb./cu. yd.
Chips, pulpwood	288	486
Cinders (coal, ashes, clinkers)	673	1,134
Clay and gravel, dry	1602	2,700
Clay, compact, solid	1746	2,943
Clay, dry in lump loose	1009	1,701
Clay, excavated in water	1282	2,160
Coal, anthracite, broken, loose	865	1,458
Coal, bituminous, moderately wet	801	1,350
Earth, common loam, dry	1218	2,052
Earth, mud, packed	1843	3,105
Granite, broken	1538	2,592
Gypsum	2275	3,834
Limestone, coarse, sized	1570	2,646
Limestone, mixed sizes	1682	2,835
Limestone, pulverized or crushed	1362	2,295
Sand, damp	2083	3,510
Sand, dry	1762	2,970
Sand, voids, full of water	2083	3,510
Sandstone, quarried	1314	2,214
Shale, broken crushed	1362	2,295
Slag, furnace granulated	1955	3,294
Stone or gravel, 37.5 to 87.5-mm (1.5 to 3.5") size	1442	2,430
Stone or gravel, 18.75-mm (3/4") size	1602	2,700

Bucket Fill Factors



Additional equipment

Key: ● Standard ▲ Optional or special

See your John Deere dealer for further information.

844K Engine

- Wet-sleeve cylinder liners
- Programmable auto-idle and auto shutdown
- Selected idle adjustment from 900–1,250 rpm
- Starter protection
- Automatic engine cool-down timer
- Automatic derating for exceeded system temperatures
- Serpentine drive belt for automatic tensioner
- Electrical fuel-priming pump
- Dual-stage fuel filter and water separator
- 500-hour vertical spin-on oil filter
- Engine-compartment light
- ▲ Chrome exhaust stack
- ▲ Automatic ether starting aid (recommended for cold starts below –12 deg. C [10 deg. F])
- ▲ Engine-block heater (recommended for cold starts below –23 deg. C [–10 deg. F])
- Centrifugal engine air pre-cleaner

Powertrain

- Adaptive clutch cutoff
- Programmable maximum high gear
- Clutch calibration engaged from monitor
- 2,000-hour vertical spin-on transmission filter
- Transmission diagnostic ports
- 5-speed transmission with lockup torque converter
- ▲ 4-speed transmission with non-lockup torque converter*
- ▲ Front locking differential*
- ▲ Rear locking differential*
- ▲ Automatic differential lock
- Axle oil temperature sensing
- Wheel-spin control

Quad-Cool™ Cooling System

- Heavy-duty, trash-resistant radiator and high-ambient cooling package
- 2-side access to all coolers
- Isolated from engine compartment
- Integral engine oil cooler
- Hydraulic oil cooler (oil to air)
- Transmission oil cooler (oil to air)
- Charge air cooler (air to air)
- Coolant recovery tank
- Antifreeze, –37 deg. C (–34 deg. F)
- Cool-on-demand swing-out fan
- Enclosed fan safety guard
- Automatic reversing fan drive
- Axle and service-brake coolers

Hydraulics

- Automatic return-to-dig bucket positioner
- In-cab adjustable automatic boom-height kickout/return to carry
- Reservoir with sight gauge and fill strainer
- Hydraulic diagnostic ports
- 4,000-hour in-tank filter
- ▲ 2 function — joystick with steering column F-N-R
- 2 function — 2-lever fingertip controls and steering column F-N-R
- ▲ 3 function — joystick with steering column F-N-R and 3rd-function auxiliary lever*
- ▲ 3 function — 3-lever fingertip controls and steering column F-N-R*

844K Hydraulics (continued)

- Ride control, automatic with monitor-adjustable speed settings
- ▲ Hydraulic control system for quick-coupler locking pins*

Steering Systems

- Joystick steering (including conventional steering column) with gearshift, F-N-R, and horn
- ▲ Secondary steering

Electrical

- Solid-state electrical power-distribution system
- Lockable master electrical-disconnect switch
- By-pass start safety cover at starter
- Remote jump-start access in battery box
- Pre-wired for beacon/strobe light
- Lights: Halogen driving lights with guards (2) / Front (4), rear cab (2), and rear grille (2) work lights / LED stop- and taillights
- Heavy-duty front LED turn signal and marker lights
- ▲ Premium LED work, drive, and marker lights
- Programmable courtesy lights
- Horn, electric
- Reverse warning alarm
- Multifunction/multi-language LCD color monitor includes: Digital instruments — Analog display (hydraulic oil temperature, engine coolant temperature, transmission oil temperature, and engine oil pressure) / Digital display (engine rpm, transmission gear/direction indicator, hour meter, fuel level, speedometer, odometer, average fuel consumption, and outside temperature)
- Integrated cycle counter with 5 categories
- Indicator lights: Standard and selected options / Amber caution and red stop
- Operator-warning messages
- Built-in diagnostics: Diagnostic-code details / Sensor values / Calibrations / Individual circuit tester
- ▲ Electrical corrosion-prevention package
- ▲ AM/FM/Weather Band (WB) radio with remote auxiliary port
- ▲ Premium AM/FM/WB radio with Bluetooth®, remote auxiliary port, and remote USB port
- 24- to 12-volt, 8-amp converter and power port
- ▲ 24- to 12-volt, 15- or 30-amp converter and power port

Operator's Station

- Quiet Cab with air conditioning/heater (ROPS/FOPS Level 1, isolation mounted)
- Keyless start with multiple security modes
- Sealed-switch module with function indicators
- Premium seat with high-wide back and headrest extension, heated, leather/fabric cover, and adjustable air suspension
- Hydraulic controls integrated to seat
- High-visibility, bright-orange seat belt, 76 mm (3 in.), with retractor
- Cup holders (2)
- Lunch-box/cooler holder
- Dome and reading light
- 12-volt power port
- Rubber floor mat
- Tilt steering column
- Operator's manual storage compartment
- Outside (2) and inside (2) rearview mirrors
- ▲ Large heated outside mirrors

844K Operator's Station (continued)

- Left-side operator-station access
- Slip-resistant steps and ergonomic handholds
- Sun visor
- Radio ready
- Front and rear intermittent windshield wiper and washers
- ▲ Powered cab air pre-cleaner
- ▲ Beacon bracket (single or dual available)
- ▲ Rear camera
- ▲ Rear camera and radar object-detection system
- LOADRITE® L2180 Payload Scale ready
- ▲ LOADRITE L2180 Payload Scale
- ▲ LOADRITE L2180 Payload Scale with printer
- ▲ Fire extinguisher

Loader Linkage

- Z-Bar loader linkage

Buckets and Attachments

- ▲ Full line of Deere pin-on buckets
- ▲ Bolt-on bucket spill guard*

Overall Vehicle

- JDLink™ wireless communication system (available in specific countries; see your dealer for details)
- NeverGrease™ steering-cylinder joints
- Bushed pin joints (including static joints on bucket and steering cylinders)
- Front and rear tie-downs (includes mid tie-downs)
- Rear cast bumper with rear hitch and locking pin
- Articulation locking bar
- 40-deg. steering articulation to each side with rubber-cushion stops on frame
- Vandal protection with lockable engine enclosures, right counterweight storage, battery box, and filler access for radiator/fuel/hydraulic transmission
- Right and left handrails, platforms, and steps
- Service steps and handholds
- Storage compartment
- Fuel-tank fill strainer
- Heavy-duty fuel-tank guard
- Ground-level fueling and diesel exhaust fluid (DEF)
- Same-side ground-level daily servicing
- Environmental drains for engine, transmission, hydraulic oils, and engine coolant
- Fluid-sampling ports for engine, transmission, hydraulic and axle oils, and engine coolant
- 29.5R25 tires on 5-piece rims*
- ▲ 875/65R29 tires on 5-piece rims
- ▲ Tire-pressure monitoring system
- Level 1 sound package
- Level 2 sound package
- Transmission side-frame and bottom guards
- ▲ Fast-fuel system
- ▲ Quick fluid service (engine, transmission, hydraulic oils, and engine coolant)
- ▲ Fenders, full-coverage, front
- ▲ Fenders, full-coverage, front and rear
- Lift eyes
- ▲ License-plate bracket and light
- ▲ Special guarding for waste and forestry applications*

*Not available with Aggregate-Handler package.



Net engine power is with standard equipment including air cleaner, exhaust system, alternator, and cooling fan at test conditions per ISO 9249. No derating is required up to 3050-m (10,000 ft.) altitude. Specifications and design subject to change without notice. Specifications with the exception of bucket capacity are in accordance with all applicable ISO standards. Except where otherwise noted, these specifications are based on a unit with applicable linkage and standard equipment, ROPS cab, rear cast bumper/counterweight, transmission side-frame guards, bottom guards, standard tires, full fuel tank, and 79-kg (175 lb.) operator.

JohnDeere.com