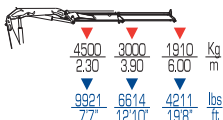
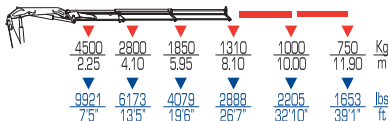




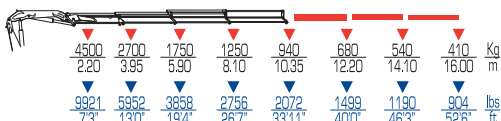
12521 S



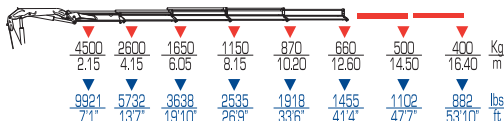
12522 S



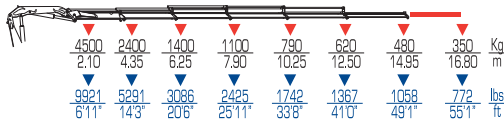
12523 S



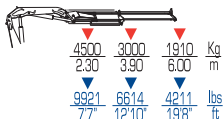
12524 S



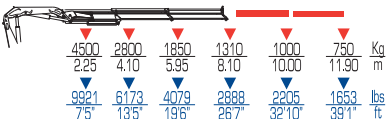
12525 S



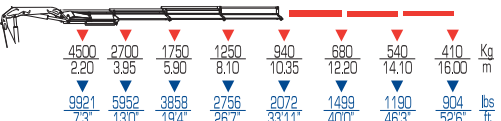
12521 S LC



12522 S LC

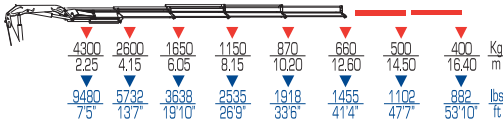


12523 S LC

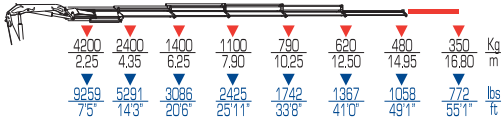


	tm	ft lbs	l/min	gals/min	Mpa	Psi	°
12521 S	11,8	85110	35	9	26	3770	406
12522 S	11,4	82330	35	9	26	3770	406
12523 S	11,0	79820	35	9	26	3770	406
12524 S	10,8	78040	35	9	26	3770	406
12525 S	10,4	75510	35	9	26	3770	406
12523 S + J252	-	-	35	9	26	3770	406
12524 S + J252	-	-	35	9	26	3770	406

12524 S LC



12525 S LC



12523 S + J252



12524 S + J252



kg	lbs	kg	lbs	mm	ft	mm	ft	mm	ft
ST	ST	LC	LC						
1440	3175	1525	3365	2420	7'11"	2135	7'0"	770	2'6"
1550	3420	1635	3605	2420	7'11"	2135	7'0"	770	2'6"
1655	3650	1740	3840	2420	7'11"	2135	7'0"	770	2'6"
1755	3870	1840	4060	2420	7'11"	2135	7'0"	865	2'10"
1840	4060	1925	4245	2420	7'11"	2145	7'0"	865	2'10"
2015	4445	-	-	2420	7'11"	2430	7'12"	970	3'2"
2115	4665	-	-	2420	7'11"	2430	7'12"	970	3'2"