

**PK 13.501K SLD 3 | PK 14.501K SLD 5**

**MORE PAYLOAD  
THANKS TO  
INTELLIGENT LEIGHT-  
WEIGHT DESIGN**

**LIFETIME EXCELLENCE**

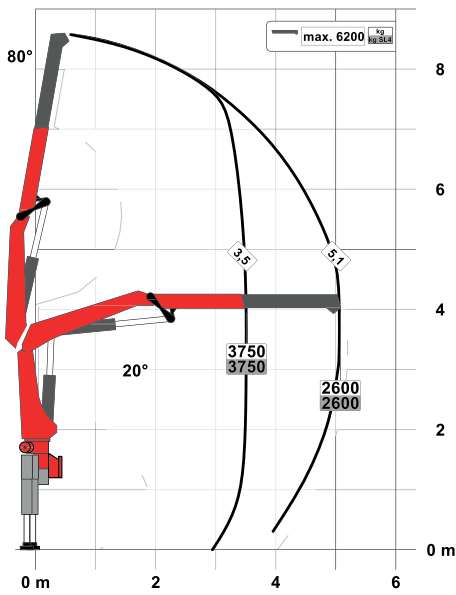


PK 13.501K SLD 3 | PK 14.501K SLD 5

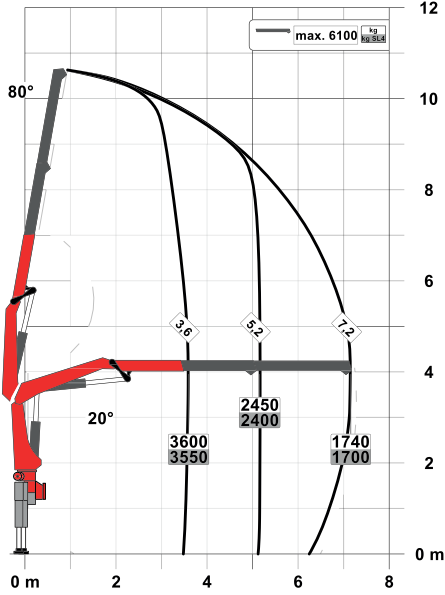
# PERFECT DIMENSIONS

## PK 13.501K SLD 3

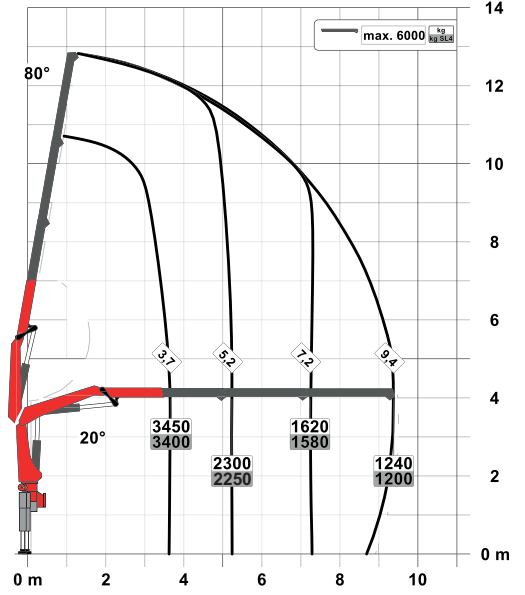
STD



A

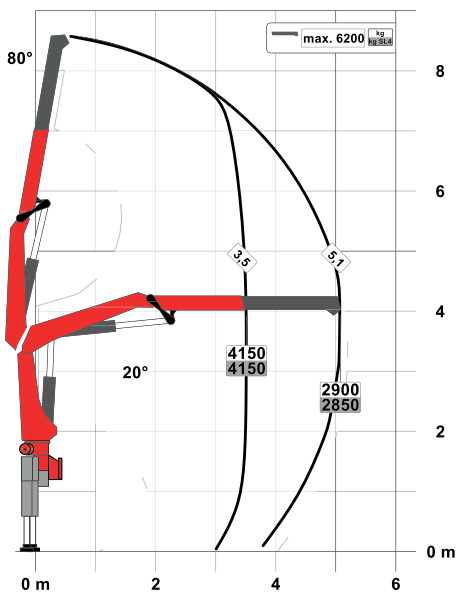


B

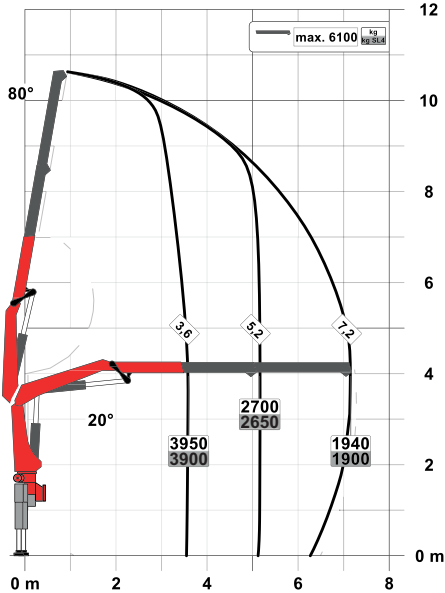


## PK 14.501K SLD 5

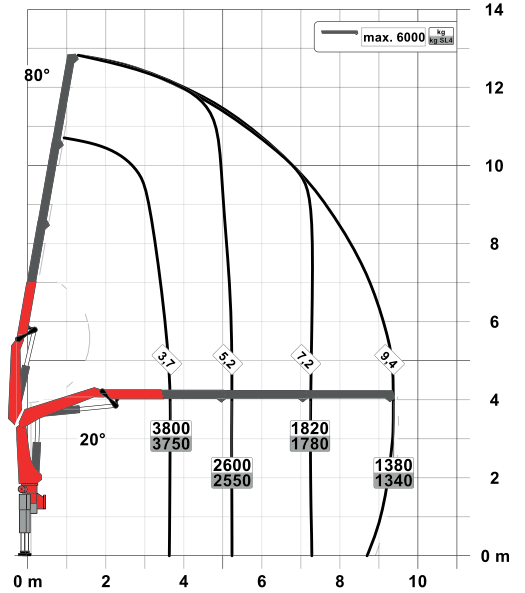
STD



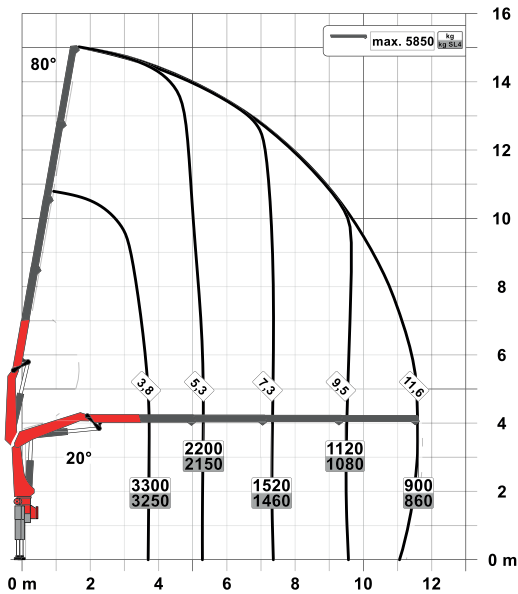
A



B



**C**



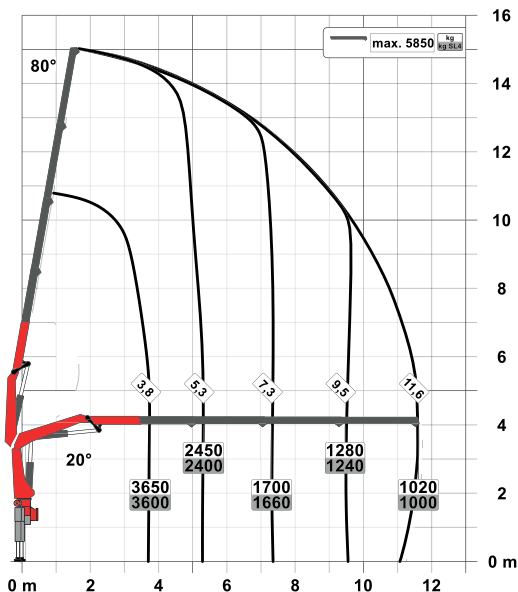
### SLD 3

- Single Link Plus
- Paltronic overload protection
- Stability monitoring system ISC-S
- Optional:
  - Stability monitoring system HPSC-L, HPSC-E
  - Radio remote control
- CE model

#### Tech. Specifications (EN 12999 HC1 HD4/S2)

|                               |                              |                           |
|-------------------------------|------------------------------|---------------------------|
| Max. lifting moment           | 13.2 mt/129.8 kNm            | 95,700 ft.lb              |
| Max. lifting capacity         | 6200 kg/60.8 kN              | 13,700 lb                 |
| Max. hydraulic outreach       | 11.7 m                       | 38' 5"                    |
| Slewing angle                 | 420°                         |                           |
| Slewing torque                | 1.6 mt/15.7 kNm              | 11,580 ft.lb              |
| Stabiliser spread (std./max.) | 5.0 m/6.6 m                  | 16' 5" / 21' 8"           |
| Fitting space required (std.) | 0.74 m                       | 2' 5"                     |
| Width folded                  | 2.55 m                       | 8' 4"                     |
| Max. operating pressure       | 330 bar                      | 4,785 psi                 |
| Recommended pump capacity     | from 35 l/min<br>to 50 l/min | 9.2 US gpm<br>13.2 US gpm |
| Dead weight (std.)            | 1480 kg                      | 3,260 lb                  |

**C**



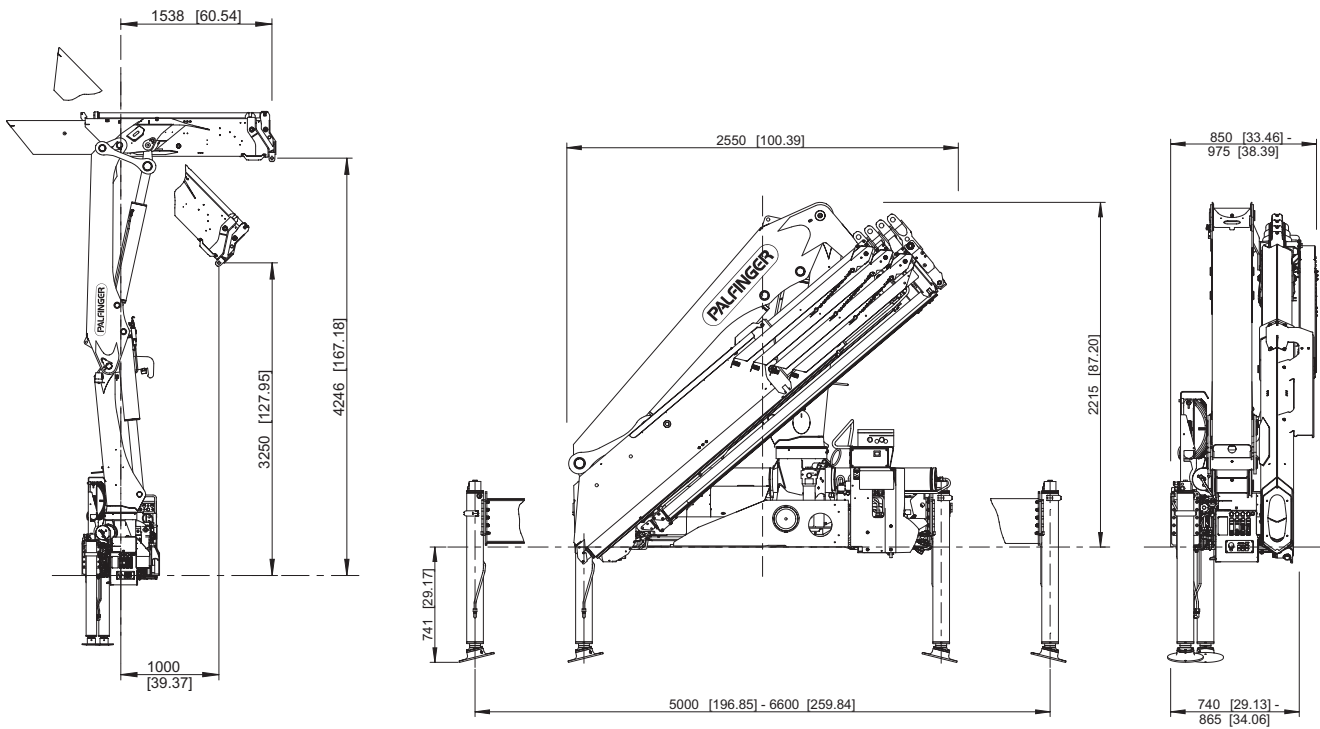
### SLD 5

- Single Link Plus
- Paltronic overload protection
- E-HPLS
- Load Sensing valve
- Radio remote control with LED display
- Stability monitoring system ISC-S
- Optional:
  - Stability monitoring system HPSC-L, HPSC-E
- CE model

#### Tech. Specifications (EN 12999 HC1 HD4/S2)

|                               |                              |                            |
|-------------------------------|------------------------------|----------------------------|
| Max. lifting moment           | 14.6 mt/143.3 kNm            | 105,650 ft.lb              |
| Max. lifting capacity         | 6200 kg/60.8 kN              | 13,700 lb                  |
| Max. hydraulic outreach       | 11.7 m                       | 38' 5"                     |
| Slewing angle                 | 420°                         |                            |
| Slewing torque                | 1.6 mt/15.7 kNm              | 11,580 ft.lb               |
| Stabiliser spread (std./max.) | 5.0 m/6.6 m                  | 16' 5" / 21' 8"            |
| Fitting space required (std.) | 0.74 m                       | 2' 5"                      |
| Width folded                  | 2.55 m                       | 8' 4"                      |
| Max. operating pressure       | 360 bar                      | 5,220 psi                  |
| Recommended pump capacity     | from 50 l/min<br>to 70 l/min | 13.2 US gpm<br>18.5 US gpm |
| Dead weight (std.)            | 1510 kg                      | 3,330 lb                   |

## DIMENSIONS



KP-PK13/14KSLDL1+EN

Cranes shown in the leaflet are partially optional equipped and do not always correspond to the standard version. Country-specific regulations must be observed. Dimensions may vary. Subject to technical changes, errors and translation mistakes.