

KOMATSU®

HYDRAULIC EXCAVATOR

PC500LC-10M0

HORSEPOWER

Gross: 270 kW 362 hp @ 1.900 rpm
Net: 269 kW 360 hp @ 1.900 rpm

OPERATING WEIGHT

49,400 - 51,300 kg

BUCKET CAPACITY

2.50 - 4.00 m³



ORIGIN JAPAN / KLTD

Photos may include optional equipment.

PC500LC-10M0 WALK-AROUND

Gives you the higher returns,
with peace of mind

NET
ENGINE
POWER
360 hp



* Photo may include optional equipment.

»Lower fuel consumption

- Reduction of fuel consumption by 11% (Compared to the PC450-8).
- Advanced management system of variable engine speed matching control.
- Fan clutch system.
- Reduction of hydraulic piping loss.

»Higher productivity

- Larger bucket capacity.
- Powerful digging operation.

»Durability & reliability

- Enhanced work equipment.
- Newly largersized undercarriage.
- Heavy-duty main frame and rigidity swing circle.
- Improved engine reliability.

»Lower maintenance cost

- Less maintenance time with new features.
- Detection system to prevent failure of main components.
- More visible maintenance information on the monitor screen.

»Safety & comfort

- Large comfortable cab.
- Rear view monitor system (Optional).

»Information & communication technology (ICT) & KOMTRAX

- Large multi-lingual high resolution liquid crystal display (LCD) monitor.
- Equipment management monitoring system.
- KOMTRAX.



* Photo may include optional equipment.

LOWER FUEL CONSUMPTION

KOMATSU NEW ENGINE TECHNOLOGIES

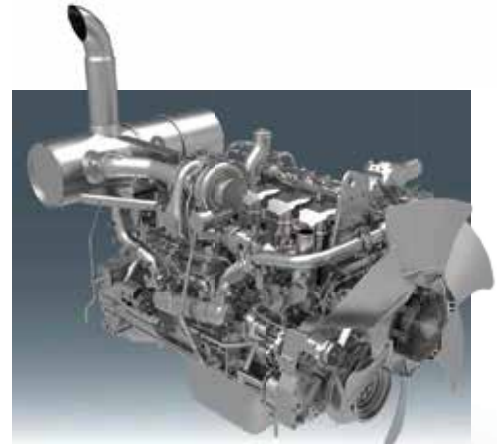
»Low fuel consumption technology

»Engine management is enhanced.

»The variable speed matching of the engine, hydraulic pump and a viscous fan clutch guarantee efficiency and precision. Through the in-house development and production of main components, Komatsu has achieved great advancements in technology, providing high levels of performance and efficiency in virtually all applications.

FUEL CONSUMPTION
REDUCED BY
VS PC450-8
11%

Based on typical work pattern collected via KOMTRAX. This fuel consumption data is the result that compared actual measured value by using the prototype machine.



Komatsu SAA6D125E-5 engine EU Stage 3A emission equivalent. (CG image).

»Improvement of engine combustion efficiency

»By optimizing the fuel injection control, the engine combustion efficiency is improved. This technology achieved both high power output and low fuel consumption.

»Reduction of hydraulic pressure loss

»The internal shape of the control valves, piping diameter and fitting shape have been thoroughly revised. With this improvement, hydraulic loss is reduced more than ever. It contributes to low fuel consumption.

»Reduced fan speed and fan drive loss

»A speed controlled viscous fan clutch and large diameter fan improves engine efficiency and reduces engine power requirements when operating in cooler temperatures.



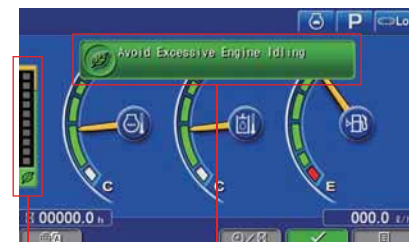
»Enhanced engine-pump matching control

»Large displacement hydraulic main pumps provide high flow output at low engine RPM. Furthermore, by building in optimum matching of the engine and pumps, it keeps high operability and workability. This technology achieved a large production and low fuel consumption.

»Assists energy-saving operations

»ECO gauge

»Equipped with the ECO gauge that can be recognized at a glance on the right of the multi-function color monitor for environment-friendly energy-saving operations. Allows focus on operation in the green range with reduced CO₂ emissions and efficient fuel consumption.



ECO gauge

Idling caution

»Idling caution

»To prevent unnecessary fuel consumption, an idling caution is displayed on the monitor, if the engine idles for 5 minutes or more.

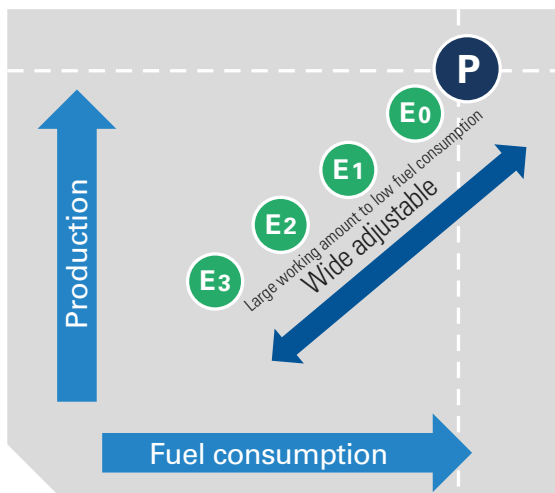
»Auto idle stop function

»When the engine has been idling for certain time, the engine stops automatically to reduce unnecessary fuel consumption and exhaust emissions. The duration before the engine shutdown can be easily programmed.

»Fuel saving support functions

»Just select a working mode that suits your purpose

»In P mode, LARGE PRODUCTION is implemented. In E mode, LOW FUEL CONSUMPTION is implemented. E mode can be adjusted widely from E0 to E3 mode, and it adapts flexibly to customer's demands. Komatsu tuned each working mode precisely, ensuring high operability and workability. Just by selecting the working mode, it provides the best performance in demanding applications.



P (Power mode):

Maximum production.
Fast cycle time.

E (Economy mode):

Better fuel consumption.



»Easy selectable E mode

»Compared with the conventional model, E0 to E3 can be easily selected on the monitor.

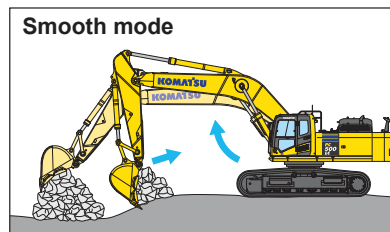


»In addition to the above modes there are also the following modes. Please select the appropriate mode according to the application.

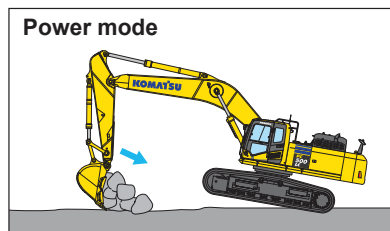
Working mode	Application	Advantages
L	Lifting mode	<ul style="list-style-type: none"> • Suitable attachment speed • Lifting capacity is increased 7% by raising hydraulic pressure.
B	Breaker mode	<ul style="list-style-type: none"> • Optimum engine rpm, hydraulic flow.
ATT/P	Attachment power mode	<ul style="list-style-type: none"> • Optimum engine rpm, hydraulic flow, 2 way. • Power mode.
ATT/E	Attachment economy mode	<ul style="list-style-type: none"> • Optimum engine rpm, hydraulic flow, 2 way. • Economy mode.

»Two-mode setting for boom

»Smooth mode provides easy operation for gathering blasted rock or scraping down operation. When maximum digging force is needed, switch to Power mode for more effective excavating.



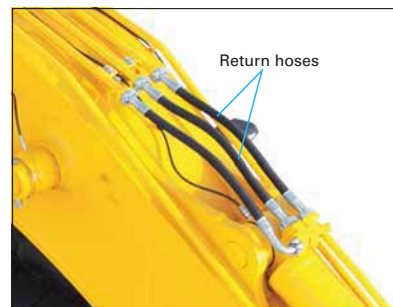
Boom floats upward, reducing lifting of machine front. This facilitates gathering blasted rock and scraping down operations.



Boom pushing force is increased, ditch digging and box digging operation on hard ground are improved.

»Smooth loading operation

»Two return hoses improve hydraulic performance. In the arm out function, a portion of the oil is returned directly to the tank providing smooth operation.



HIGHER PRODUCTIVITY



* Photo may include optional equipment.

»Increase productivity

»Productivity with t/L is improved by large bucket capacity and upgrading basic performance. It improves productivity and economical performance.

21% INCREASE VS PC450-8
FUEL EFFICIENCY (t/L)
P MODE (90° SWING AND LOADING ONTO TRUCK)

»Large capacity buckets

»Bucket selection up to 3.10 m³ are available. It can be matched for various applications.

BUCKET CAPACITY

2.50 m³

&

3.10 m³

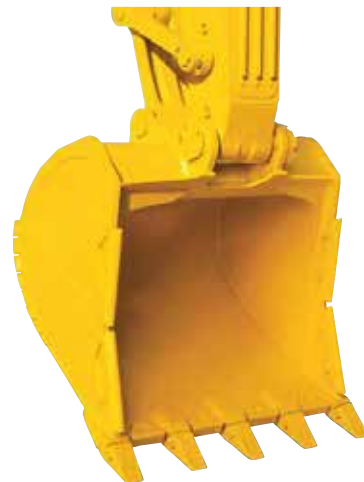
(Allowed material density: 1.8 t/m³)

(Allowed material density: 1.5 t/m³)

7,060 mm BOOM AND 3,380 mm ARM

»2.50 m³ HD bucket & 3.10 m³ GP bucket

»By optimizing the shape of the side edge, it increases the penetration force.



»Powerful digging operation

»Digging in P mode became powerful by improving hydraulic control. When more power is needed, the engine output is powered up by the one-touch power max. function (See next article), and you can dig stronger. Increasing engine power achieved high performance.

ENGINE HORSEPOWER
(269 KW ← 257 KW)
(COMPARED TO THE PC450-8)

5% up

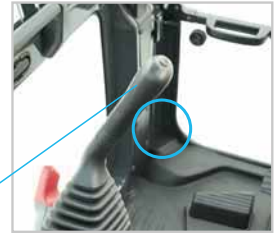
BUCKET DIGGING FORCE
(303 kN ← 277 kN)
(COMPARED TO THE PC450-8)

9% up

»One-touch power max. function

»Digging force increase for 8.5 seconds of operation when press the left knob switch which is called the one-touch power max. switch.

One-touch
power max.
switch



**MAXIMUM ARM CROWD
FORCE (ISO 6015)**
(235 kN [24.0 t] ← 219 kN [22.3 t])
(WITH POWER MAX. FUNCTION)

7% up

**MAXIMUM BUCKET DIGGING
FORCE (ISO 6015)**
(303 kN [30.9 t] ← 283 kN [28.9 t])
(WITH POWER MAX. FUNCTION)

7% up

»Measured with power max. function, 3,380 mm arm and ISO 6015.



* Photo may include optional equipment.

I DURABILITY & RELIABILITY

»High durability for 50-ton class excavator

»Whole structure of PC500LC-10M0 is completely renewed on the assumption of severer jobsites. Durability and reliability are greatly improved.



* Photo may include optional equipment.

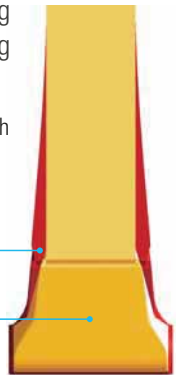
»New reinforced working equipment with excellent durability and reliability

»Remodeled new reinforced working equipment to adapt larger size bucket. It is much suitable for severe condition working. The newly designed working equipment achieve high durability and reliability with high performance.

»Wide boom and arm

»Rigidity is increased by increasing the working equipment size. The newly developed working equipment resists twisting and bending well.

* It is not interchangeable to PC450-8, due to upsize width of working equipment.

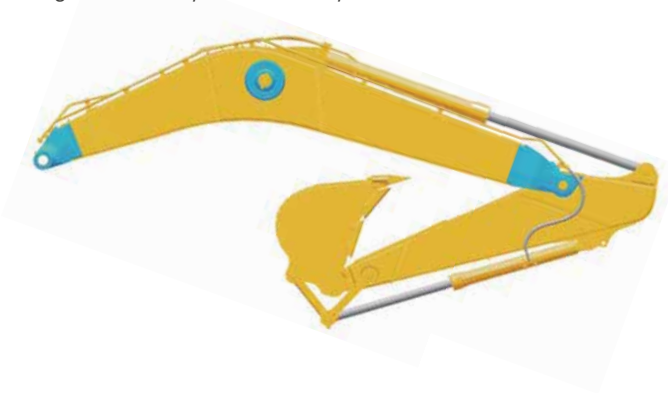


»Optimizes shape of casting

»The shapes of the cast parts exposed to high loads are optimized for higher durability and reliability.

»New reinforced undercarriage

»Newly largersized undercarriage adopts as standard. Durability and reliability are significantly improved by reinforcing and increasing the size of all components.

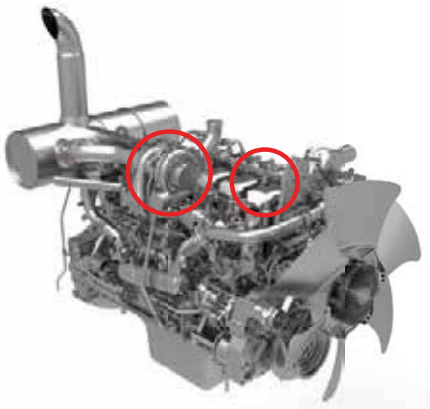




* Photo may include optional equipment.

»Improve engine reliability

»Total reliability for engine is improved by new water cooled turbo and new injector. It is more reliable than current model.



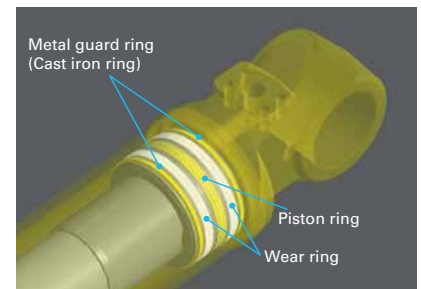
»O-ring face seal

»The hydraulic hose seal method has been changed from a conventional taper seal to an O-ring seal. This provides improved sealing performance.



»Metal guard rings

»Metal guard rings protect all the hydraulic cylinders and improve reliability.



»Fuel pre-filter

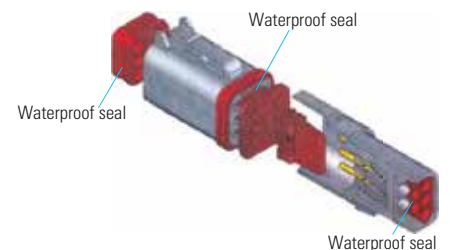
(With water separator)

»Removes water and contaminants from fuel to enhance the fuel system reliability.



»Shield connectors

»Shield connectors seal tight and have higher reliability.



LOWER MAINTENANCE COST

- »Maintenance is also part of the operating cost
- »Komatsu pursued reduction of maintenance time and cost

- »Centralized filters

»It is easy to access all filters. All filter cartridges are located at pump room. It can reduce time of periodical maintenance.



»Easy cleaning cooling unit

»Cleanability of the cooling unit has been improved. It is effective in the field of dusty site.

- Improvement core cleanability by enabling openable engine hood side cover.
- Making oil cooler a single piece from 3 pieces, no more space accumulating dust.



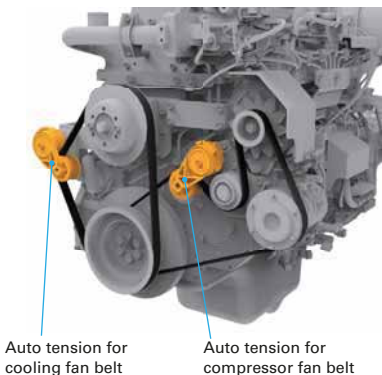
»Easy oil sampling (Optional)

»Easy oil sampling ports are added. It is important to get sample that is agitated properly. Using this equipment will help accurate analysis.



»Auto tension fan belt

»Belt tension for cooling fan and compressor and alternator are adjusted automatically.



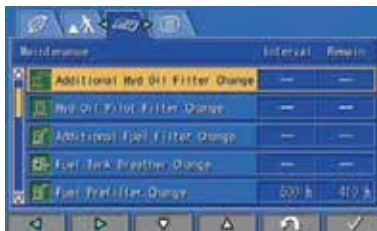
»Easy maintenance time management

»The monitor informs replacement time of oil and filters on the LCD when the replacement interval is reached.



»Easy to know maintenance time when using breaker

»In addition to the above functions, it monitors the breaker usage time. Since the replacement time will be changed depending on the breaker usage time, monitor can notify the optimum replacement time.



»Detect abnormality of hydraulic circuit

»Clogging sensor for hydraulic oil as standard

»When the hydraulic oil filter is clogged, the caution message pops up on the monitor to notify replacing the filter. It is possible to suppress repair cost due to breakdown.



Clogging hydraulic oil filter caution

»Clogging sensor for breaker line (Optional)

»Battery disconnect switch

»A battery disconnect switch allows a technician to disconnect the power supply and lock out before servicing or maintenance the machine. Also, minimize discharge of the battery during long-term non operation.

»System operating lamp tells the timing of disconnect the switch to prevent controller failures.



»Pre-cleaner for dusty condition

»Even in dusty places, by installing pre-cleaner coupled with the large air cleaner, the frequency of cleaning the air cleaner will be reduced.

»Other features

- Easy to check level of hydraulic oil.
- Electric priming pump.
- Blow-by pressure detection.

SAFETY & COMFORT



»Ensuring operator's comfort, it contributes to increase safety and productivity

»Wide newly-designed cab

»Newly-designed wide spacious cab includes seat with reclining backrest. The seat height and longitudinal inclination are easily adjusted using a pull-up lever. You can set the appropriate operational posture of armrest together with the console. Reclining the seat further enables you to place it into the fully flat state with the headrest attached.

»New adjustable armrest without tools

»The height of the armrest is quickly and easily adjusted without tools.



»Pressurized cab

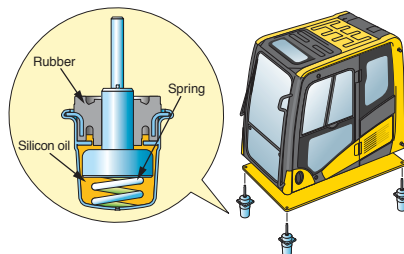
»Pressurizing inside the cab to minimize the dust entering from outside. It can keep the cab clean.

»Low cab noise

»With overwhelming low noise, you can operate without stress. Ambient noise is also reduced, reducing the stress of surrounding workers.

»Low vibration with cab damper mounting

»The cab damper mounting combined with high rigidity deck aids vibration reduction at the operator seat.



»Suspension seat

»Suspension seat with weight adjustment function as standard equipment. This seat can reduce fatigue even in operation for a long time.

»Automatic air conditioner (A/C)

»It adjusts automatically to a comfortable temperature throughout the year, even in hot and cold areas.

»Sun roller blind

»Prepared a roller blind which blocks strong sunlight. Reduce sunlight at any time of day.



»Lock lever auto lock function

»If the work equipment lever is not in the neutral position when the hydraulic lock lever is released, the equipment is automatically stopped. The auto stop state is shown on the monitor screen.



»Lock lever

»Locks the hydraulic pressure to prevent unintentional movement. Neutral start function allows machine to be started only in lock position.



»Engine shutdown secondary switch

»Engine stop switch added for emergency use.



»Seat belt caution indicator



»Hand rails prevent accidental fall-off



»Large serrated steps



»Rear view monitor system (Optional)

»The operator can view the rear of the machine with a color monitor screen.



Rear view image on monitor

»Fan guards

»Fan guards are placed around fan drive.

»Pump/engine room partition

»Pump/engine room partition prevents oil from spraying onto the engine if a hydraulic hose should fail.



AUX

»12 V power supply.

»Magazine box.

»Cool & hot box.

»Luggage box.



ICT & KOMTRAX

LARGE HIGH RESOLUTION LCD MONITOR



»Large multi-lingual high resolution LCD monitor

»A large user-friendly high resolution LCD color monitor enables safe, accurate and smooth work. Simple and easy to operate switches. Function keys facilitate multi-function operations. Displays data in 15 languages to globally support operators around the world.

Indicators

- | | |
|------------------------------------|---------------------------|
| 1 Auto-decelerator. | 6 Fuel gauge. |
| 2 Working mode. | 7 ECO gauge. |
| 3 Travel speed. | 8 Fuel consumption gauge. |
| 4 Engine water temperature gauge. | 9 Function switches menu. |
| 5 Hydraulic oil temperature gauge. | 10 Language select. |

Basic operation switches

- | | |
|--------------------------|------------------|
| 1 Auto-decelerator. | 4 Buzzer cancel. |
| 2 Working mode selector. | 5 Wiper. |
| 3 Traveling selector. | 6 Window washer. |

»Supports efficient operation

»The main screen displays advices for promoting energy-saving operations as needed. The operator can use the ECO guidance menu to check the operation records, ECO guidance records, average fuel consumption logs, etc.



ECO guidance



ECO guidance menu



ECO guidance records



Operation records



Average fuel consumption logs

»Simplified selection of languages and new languages added

»It supports 15 languages including newly added languages. Language selection has become extremely easy.



»Equipment management monitoring system

»Monitor function

»Controller monitors engine oil level, coolant temperature, battery charge air clogging, etc. If the controller finds any abnormality, it is displayed on the LCD.

»Maintenance function

»The monitor informs replacement time of oil and filters on the LCD when the replacement interval is reached.

»Trouble data memory function

»Monitor stores abnormalities for effective troubleshooting.

SPECIAL SPEC.

»Attachment specification

»Equips PC500LC-10M0 for breaker and crusher installation. Hydraulic flow rate can be regulated by setting breaker mode on monitor panel for breaker operation.



Pilot filter



Inline filter



Stop valve



Additional filter for breaker with clogging sensor



Accumulator



»SE Spec. (Optional)

»Increased productivity by new SE boom and large capacity buckets. It improves the efficiency of loading to dump truck with large amount of loose material such as blasted rock.

BUCKET CAPACITY FOR 2.4 M SE ARM

HD bucket 3.50 m³ GP bucket 4.00 m³

Allowed material density:
1.8 t/m³

Allowed material density:
1.5 t/m³

BUCKET CAPACITY FOR 2.9 M SE ARM

HD bucket 3.00 m³ GP bucket 3.70 m³

Allowed material density:
1.8 t/m³

Allowed material density:
1.5 t/m³



6.7 m SE boom

2.4 m SE arm
2.9 m SE arm

Large capacity bucket

Photo is 2.4 m SE arm

OPTIONS

Cab front full height guard level 1 (ISO 10262)



Cab front full height guard level 2 (ISO 10262)



OPG top guard level 2 (ISO 10262)



Additional front lights
Rain visor



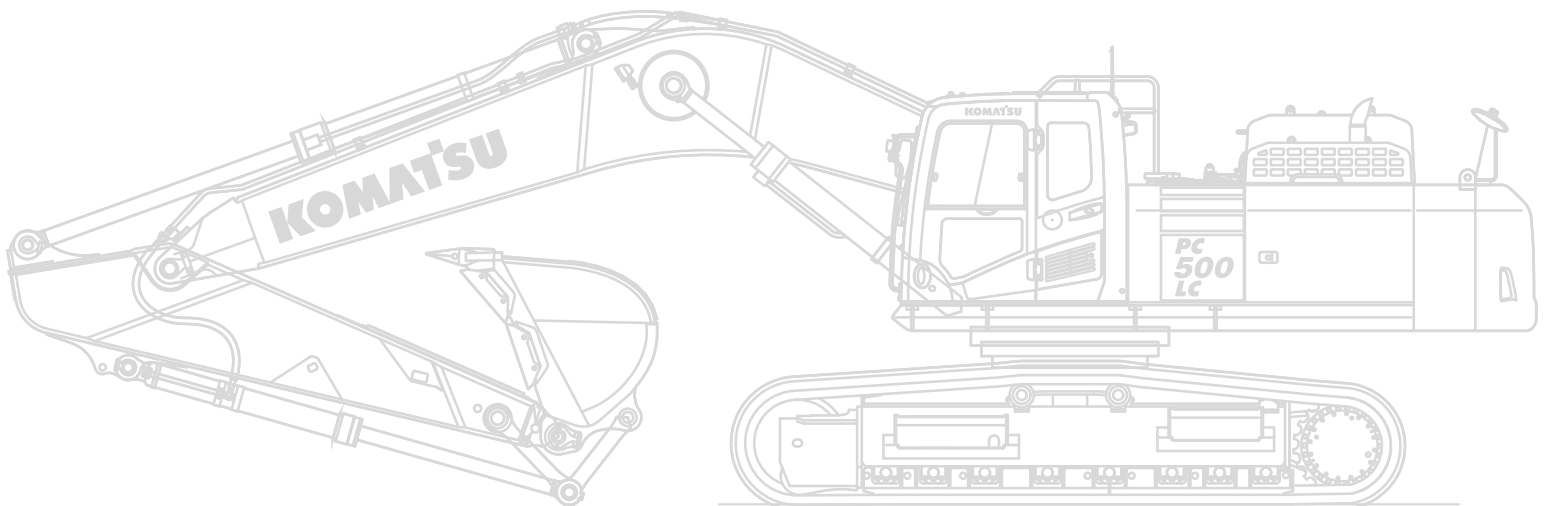
Additional handrail



Double grouser shoe



Refueling pump



BUCKET

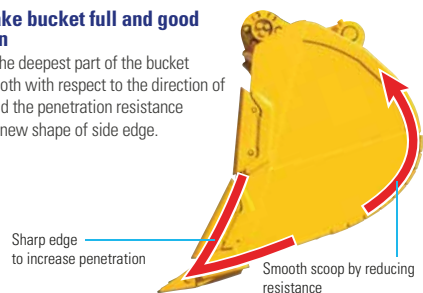
»Feature of Komatsu bucket

»The bucket affects most of the digging work and fuel consumption. Komatsu has line-up of various buckets so that you can choose a bucket suitable for your jobsite condition. You can also choose a bucket made by HENSLEY as one of the options. Please contact your dealer.

New shape bucket

»Easy to make bucket full and good penetration

»The angle to the deepest part of the bucket becomes smooth with respect to the direction of excavation and the penetration resistance decreases by new shape of side edge.



Category and feature

Category	Load / Wear / Soil (Application)	Image
Light duty LD	Load Machine power remains low during the majority of the work. No impact load. Wear Material is not abrasive. Soil Dirt, loam and clay.	
General purpose GP	Load Machine power is mostly medium, but occasionally high. Bucket movements are smooth with minor shock load. Bucket penetrates easily. Wear Material is lightly abrasive. Some sand may be medium abrasive. Soil Mostly loose sand, gravel and finely broken materials.	
Heavy duty HD	Load Machine power is high during majority of the work. Medium, but continuous shock load. Wear Material is abrasive. Light scratch marks can be seen at the bucket. Soil Limestone, shot rock, compact mix of sand, gravel and clay.	
Extra heavy duty XHD	Load Machine power is high during most of the work, often at maximum. Dynamic shock loads are frequent and machine may shake. Wear Material is very abrasive. Large scratch marks are visible and, or deform metal. Works within heaps of rock with occasional un-shot rock and rock boulders. Soil Granite, basalt, quartz sand, compact and sticky clay.	

Bucket line-up

Category	Shape	Capacity (m ³)	Width (mm)		Weight* (kg)	Tooth quantity	Boom + arm (m)			Tooth type
			With side shrouds, side cutters	Without side shrouds, side cutters			7.1 + 3.4	6.7 + 2.4 SE Spec.	6.7 + 2.9 SE Spec.	
GP	Conventional	3.10	2,050	1,915	2,310	6	□	×	×	HP
		3.70	1,840	1,705	2,390	5	×	×	□	HP
		4.00	1,960	1,825	2,520	5	×	□	×	HP
HD	Conventional	2.50	1,910	1,910	2,410	5	○	×	×	HP
		3.00	1,720	1,720	2,530	5	×	×	○	HP
		3.50	1,910	1,910	2,720	5	×	○	×	HP

* With side shrouds, side cutters. ○: Material density up to 1.8 t/m³ □: Material density up to 1.5 t/m³ ×: Not usable.

KOMATSU TOTAL SUPPORT



»Komatsu total support

»Komatsu Distributer is ready to provide variety of support before and after procuring machine to keep customers machine available and minimize operation cost.

»Fleet recommendation

»Komatsu Distributer can study customer job site and provide the most optimum fleet recommendation with detailed information to meet all of your application needs when you are considering to buy new machines or to replace the existing ones from Komatsu.

»Product support

»Komatsu Distributer secure the quality of machine by offering quality repair and maintenance services to the customer using Komatsu developed programs.

- Preventive maintenance (PM) clinic.
- Komatsu oil and wear analysis (KOWA).
- Undercarriage inspection service, etc.

»Genuine parts and genuine oil

»Komatsu Distributer will promptly and smoothly offer genuine parts and genuine oil guaranteed quality to various jobsites. Genuine oil is developed by Komatsu so that it is best matched for our Komatsu engines and hydraulic components. It maximizes engine and hydraulic components performance and prolong life.

»Service contract

»Komatsu Distributer offers several service package of repair and maintenance for a contracted period with optimum cost. Customer can be "worry-free" by trusting Komatsu Distributer skilled service.

»Operator training

»Komatsu Distributer can provide excellent operator training which enables them to operate machine safely & efficiently and to maintain machine properly.

SPECIFICATIONS



ENGINE

MODEL	Komatsu SAA6D125E-5.
TYPE	Water-cooled, 4-cycle, direct injection.
ASPIRATION	Turbocharged, aftercooled, cooled EGR.
NUMBER OF CYLINDERS	6.
BORE/STROKE	125 mm. / 150 mm.
PISTON DISPLACEMENT	11.04 L.
HORSEPOWER:	
SAE J1995	Gross 270 kW 362 hp.
ISO 9249 / SAE J1349	Net 269 kW 360 hp.
RATED RPM	1.900 min ⁻¹
FAN DRIVE METHOD FOR RADIATOR	Mechanical with viscous fan clutch.
COOLING	
GOVERNOR	All-speed control, electronic.

EU Stage 3A emission equivalent.



HYDRAULICS

TYPE	HydraMind (Hydraulic mechanical intelligence new design) system, closed-center system with load sensing valves and pressure compensated valves.
NUMBER OF SELECTABLE WORKING MODES	6.
MAIN PUMP:	
TYPE	Variable displacement piston type.
PUMPS FOR	Boom, arm, bucket, swing, and travel circuits.
MAXIMUM FLOW	690 L/min.
SUPPLY FOR CONTROL CIRCUIT	Self-reducing valve.
HYDRAULIC MOTORS:	
TRAVEL	2 x axial piston motors with parking brake.
SWING	1 x axial piston motor with swing holding brake.
RELIEF VALVE SETTING:	
IMPLEMENT CIRCUITS	37.3 MPa 380 kg/cm ² .
TRAVEL CIRCUIT	37.3 MPa 380 kg/cm ² .
SWING CIRCUIT	27.9 MPa 285 kg/cm ² .
PILOT CIRCUIT	3.2 MPa 33 kg/cm ² .
HYDRAULIC CYLINDERS (NUMBER OF CYLINDERS BORE X STROKE X ROD DIAMETER)	
BOOM	2-170 mm x 1,570 mm x 115 mm.
ARM	
STD	1-185 mm x 1,985 mm x 130 mm.
SE	1-185 mm x 1,800 mm x 130 mm.
BUCKET	
STD	1-160 mm x 1,450 mm x 115 mm.
SE	1-185 mm x 1,350 mm x 130 mm.



DRIVES AND BRAKES

STEERING CONTROL	Two levers with pedals.
DRIVE METHOD	Hydrostatic.
MAXIMUM DRAWBAR PULL	329 kN 33,500 kg.
GRADEABILITY	70%, 35°.
MAXIMUM TRAVEL SPEED: HIGH (AUTO-SHIFT) MID (AUTO-SHIFT) LOW	5.5 km/h. 4.2 km/h. 3.0 km/h.
SERVICE BRAKE/PARKING BRAKE	Hydraulic lock/mechanical disc brake.



SWING SYSTEM

DRIVE METHOD	Hydrostatic.
SWING REDUCTION	Planetary gear.
SWING CIRCLE LUBRICATION	Grease-bathed.
SERVICE BRAKE	Hydraulic lock.
HOLDING BRAKE/SWING LOCK	Mechanical disc brake.
SWING SPEED	9.1 min ⁻¹ .



UNDERCARRIAGE

CENTER FRAME	X-frame.
TRACK FRAME	Box-section.
SEAL OF TRACK	Sealed track.
TRACK ADJUSTER	Hydraulic.
NUMBER OF SHOES (EACH SIDE)	49.
NUMBER OF CARRIER ROLLERS (EACH SIDE)	2.
NUMBER OF TRACK ROLLERS (EACH SIDE)	8.



COOLANT AND LUBRICANT CAPACITY (REFILLING)

FUEL TANK	640 L.
COOLANT	45.0 L.
ENGINE	37.0 L.
FINAL DRIVE (EACH SIDE)	9.0 L.
SWING DRIVE	17.0 L.
HYDRAULIC TANK	279 L.



OPERATING WEIGHT (APPROXIMATE)

Operating weight including one-piece boom, arm, ISO 7451 heaped backhoe bucket, rated capacity of lubricants, coolant, full fuel tank, operator, and standard equipment.

Shoes	PC500LC-10M0	
	Boom: 7,060 mm Arm: 3,380 mm Bucket: 2.50 m ³	
	Operating Weight	Ground Pressure
600 mm	49,500 kg	86.5 kPa 0.88 kgf/cm ²
700 mm	50,000 kg	74.9 kPa 0.76 kgf/cm ²
800 mm	50,500 kg	66.2 kPa 0.68 kgf/cm ²
900 mm	51,100 kg	59.5 kPa 0.61 kgf/cm ²
600 mm (Double)	49,600 kg	86.6 kPa 0.88 kgf/cm ²

Shoes	PC500LC-10M0 SE Spec.	
	Boom: 6,670 mm Arm: 2,400 mm Bucket: 4.00 m ³	
	Operating Weight	Ground Pressure
600 mm	49,400 kg	86.3 kPa 0.88 kgf/cm ²
700 mm	49,900 kg	74.7 kPa 0.76 kgf/cm ²
800 mm	50,400 kg	66.0 kPa 0.67 kgf/cm ²
900 mm	51,000 kg	59.4 kPa 0.61 kgf/cm ²
600 mm (Double)	49,500 kg	86.5 kPa 0.88 kgf/cm ²

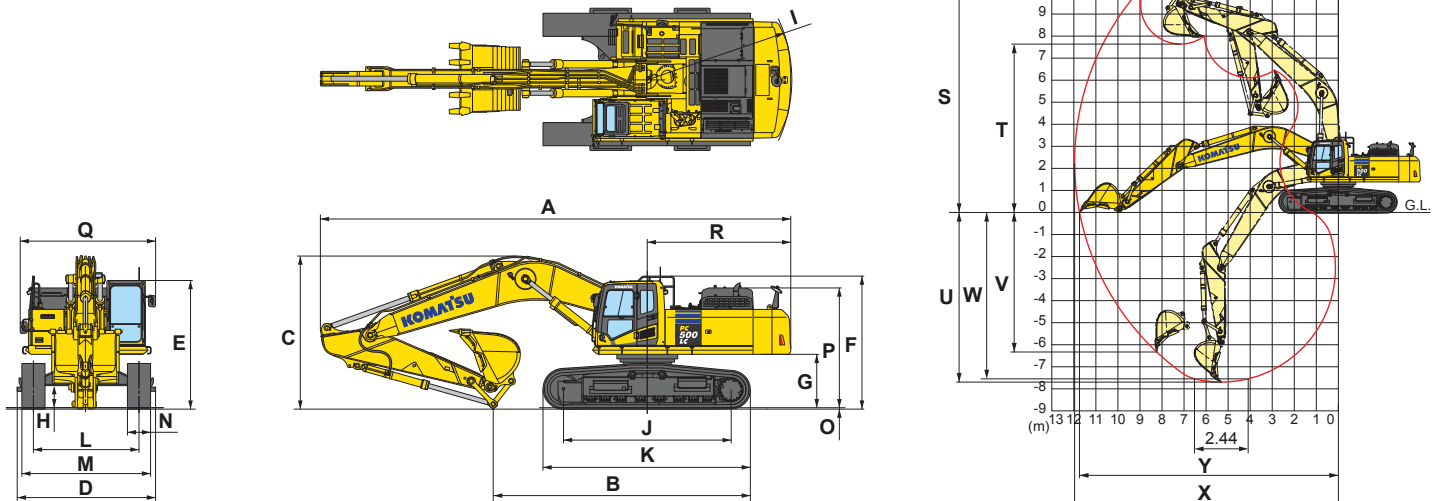
Shoes	PC500LC-10M0 SE Spec.	
	Boom: 6,670 mm Arm: 2,900 mm Bucket: 3.70 m ³	
	Operating Weight	Ground Pressure
600 mm	49,700 kg	86.8 kPa 0.89 kgf/cm ²
700 mm	50,200 kg	75.1 kPa 0.77 kgf/cm ²
800 mm	50,700 kg	66.4 kPa 0.68 kgf/cm ²
900 mm	51,300 kg	59.7 kPa 0.61 kgf/cm ²
600 mm (Double)	49,800 kg	87.0 kPa 0.89 kgf/cm ²



DIMENSIONS & WORKING RANGE

Model	PC500LC-10M0	PC500LC-10M0 SE Spec.		
Boom length	7,060 mm	6,670 mm	6,670 mm	
Arm length	3,380 mm	2,400 mm	2,900 mm	
A Overall length	12,260 mm	11,945 mm	11,855 mm	
B Length on ground (Transport)	6,655 mm	8,095 mm	7,835 mm	
C Overall height (To top of boom)*	3,990 mm	3,980 mm	4,220 mm	
D Overall width	3,580 mm			
E Overall height (To top of cab)*	3,360 mm			
F Overall height (To top of handrail)*	3,460 mm			
G Ground clearance, counterweight	1,385 mm			
H Ground clearance (Minimum)	570 mm			
I Tail swing radius	3,765 mm			
J Track length on ground	4,350 mm			
K Track length	5,385 mm			
L Track gauge	2,740 mm			
M Width of crawler	3,340 mm			
N Shoe width	600 mm			
O Grouser height	37 mm			
P Machine height to top engine cover	3,110 mm			
Q Machine upper width	3,520 mm			
R Distance, swing center to rear end	3,725 mm			
S Max. digging height	10,885 mm	10,200 mm	10,225 mm	
T Max. dumping height	7,650 mm	6,675 mm	6,750 mm	
U Max. digging depth	7,695 mm	6,640 mm	7,150 mm	
V Max. vertical wall digging depth	6,335 mm	2,495 mm	2,725 mm	
W Max. digging depth of cut for 2,440 mm level	7,560 mm	6,480 mm	7,000 mm	
X Max. digging reach	11,985 mm	10,945 mm	11,350 mm	
Y Max. digging reach at ground level	11,760 mm	10,720 mm	11,135 mm	
Z Min. swing radius	5,050 mm	4,720 mm	4,685 mm	
SAE 1179 Rating	Bucket digging force at power max.	267 kN 27,200 kgf	304 kN 31,000 kgf	304 kN 31,000 kgf
	Arm crowd force at power max.	228 kN 23,300 kgf	262 kN 26,700 kgf	244 kN 24,900 kgf
ISO 8015 Rating	Bucket digging force at power max.	303 kN 30,900 kgf	339 kN 34,600 kgf	339 kN 34,600 kgf
	Arm crowd force at power max.	235 kN 24,000 kgf	273 kN 27,800 kgf	251 kN 25,600 kgf

* Including grouser height.



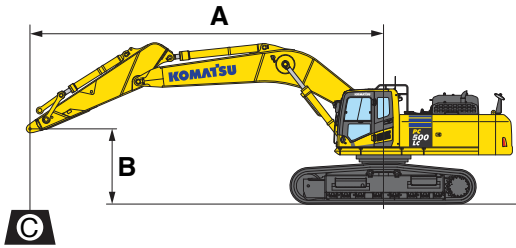


LIFTING CAPACITY WITH LIFTING MODE

PC500LC-10M0

- A: Reach from swing center.
- B: Arm top pin height.
- C: Lifting capacity.
- Cf: Rating over front.
- Cs: Rating over side.
- ⊗: Rating at maximum reach.

- Conditions:
- 7,060 mm one-piece boom.
 - 3,380 mm arm.
 - Without bucket.



PC500LC-10M0		Arm: 3,380 mm		Without bucket		Shoe: 600 mm triple grouser							
B	A	⊗ MAX		9.0 m		7.5 m		6.0 m		4.5 m		3.0 m	
		Cf	Cs	Cf	Cs	Cf	Cs	Cf	Cs	Cf	Cs	Cf	Cs
6.0 m		*7,150 kg	*7,150 kg	*11,250 kg	8,130 kg	*12,640 kg	10,990 kg						
4.5 m		*7,260 kg	6,710 kg	*12,200 kg	7,920 kg	*13,720 kg	10,540 kg	*16,340 kg	14,750 kg	*21,500 kg	*21,500 kg		
3.0 m		*7,570 kg	6,330 kg	12,050 kg	7,660 kg	*14,920 kg	10,030 kg	*18,570 kg	13,800 kg	*26,090 kg	20,720 kg		
1.5 m		*8,120 kg	6,200 kg	11,780 kg	7,410 kg	15,480 kg	9,590 kg	*20,210 kg	13,050 kg	*19,930 kg	19,520 kg		
0 m		*9,010 kg	6,320 kg	11,580 kg	7,230 kg	15,140 kg	9,290 kg	*20,850 kg	12,620 kg	*23,050 kg	19,150 kg		
-1.5 m		*10,450 kg	6,740 kg	11,510 kg	7,160 kg	14,980 kg	9,150 kg	*20,450 kg	12,460 kg	*26,730 kg	19,130 kg	*17,090 kg	*17,090 kg
-3.0 m		*12,130 kg	7,610 kg			*14,970 kg	9,180 kg	*18,940 kg	12,520 kg	*24,210 kg	19,340 kg	*26,380 kg	*26,380 kg
-4.5 m		*11,730 kg	9,410 kg			*11,860 kg	9,480 kg	*15,930 kg	12,800 kg	*20,150 kg	19,790 kg	*25,160 kg	*25,160 kg

PC500LC-10M0		Arm: 3,380 mm		Without bucket		Shoe: 700 mm triple grouser							
B	A	⊗ MAX		9.0 m		7.5 m		6.0 m		4.5 m		3.0 m	
		Cf	Cs	Cf	Cs	Cf	Cs	Cf	Cs	Cf	Cs	Cf	Cs
6.0 m		*7,150 kg	*7,150 kg	*11,250 kg	8,150 kg	*12,640 kg	11,010 kg						
4.5 m		*7,260 kg	6,730 kg	*12,200 kg	7,940 kg	*13,720 kg	10,560 kg	*16,340 kg	14,780 kg	*21,500 kg	*21,500 kg		
3.0 m		*7,570 kg	6,350 kg	12,090 kg	7,680 kg	*14,920 kg	10,060 kg	*18,570 kg	13,830 kg	*26,090 kg	20,760 kg		
1.5 m		*8,120 kg	6,220 kg	11,820 kg	7,420 kg	15,530 kg	9,620 kg	*20,210 kg	13,080 kg	*19,930 kg	19,570 kg		
0 m		*9,010 kg	6,340 kg	11,620 kg	7,240 kg	15,190 kg	9,310 kg	*20,850 kg	12,650 kg	*23,050 kg	19,190 kg		
-1.5 m		*10,450 kg	6,750 kg	11,550 kg	7,180 kg	15,030 kg	9,170 kg	*20,450 kg	12,490 kg	*26,730 kg	19,180 kg	*17,090 kg	*17,090 kg
-3.0 m		*12,130 kg	7,630 kg			*14,970 kg	9,200 kg	*18,940 kg	12,550 kg	*24,210 kg	19,390 kg	*26,380 kg	*26,380 kg
-4.5 m		*11,730 kg	9,440 kg			*11,860 kg	9,500 kg	*15,930 kg	12,830 kg	*20,150 kg	19,830 kg	*25,160 kg	*25,160 kg

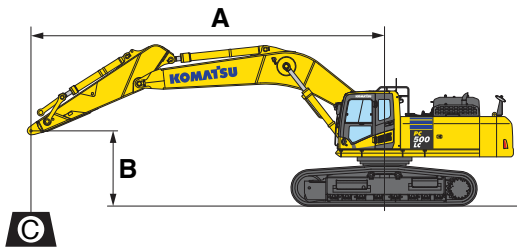
PC500LC-10M0		Arm: 3,380 mm		Without bucket		Shoe: 800 mm triple grouser							
B	A	⊗ MAX		9.0 m		7.5 m		6.0 m		4.5 m		3.0 m	
		Cf	Cs	Cf	Cs	Cf	Cs	Cf	Cs	Cf	Cs	Cf	Cs
6.0 m		*7,150 kg	*7,150 kg	*11,250 kg	8,220 kg	*12,640 kg	11,100 kg						
4.5 m		*7,260 kg	6,800 kg	*12,200 kg	8,020 kg	*13,720 kg	10,650 kg	*16,340 kg	14,900 kg	*21,500 kg	*21,500 kg		
3.0 m		*7,570 kg	6,410 kg	12,210 kg	7,750 kg	*14,920 kg	10,150 kg	*18,570 kg	13,960 kg	*26,090 kg	20,950 kg		
1.5 m		*8,120 kg	6,280 kg	11,940 kg	7,500 kg	15,680 kg	9,710 kg	*20,210 kg	13,210 kg	*19,930 kg	19,750 kg		
0 m		*9,010 kg	6,400 kg	11,740 kg	7,320 kg	15,340 kg	9,400 kg	*20,850 kg	12,770 kg	*23,050 kg	19,370 kg		
-1.5 m		*10,450 kg	6,820 kg	11,670 kg	7,250 kg	15,180 kg	9,260 kg	*20,450 kg	12,610 kg	*26,730 kg	19,360 kg	*17,090 kg	*17,090 kg
-3.0 m		*12,130 kg	7,710 kg			*14,970 kg	9,300 kg	*18,940 kg	12,670 kg	*24,210 kg	19,570 kg	*26,380 kg	*26,380 kg
-4.5 m		*11,730 kg	9,530 kg			*11,860 kg	9,590 kg	*15,930 kg	12,960 kg	*20,150 kg	20,010 kg	*25,160 kg	*25,160 kg

PC500LC-10M0		Arm: 3,380 mm		Without bucket		Shoe: 900 mm triple grouser							
B	A	⊗ MAX		9.0 m		7.5 m		6.0 m		4.5 m		3.0 m	
		Cf	Cs	Cf	Cs	Cf	Cs	Cf	Cs	Cf	Cs	Cf	Cs
6.0 m		*7,150 kg	*7,150 kg	*11,250 kg	8,300 kg	*12,640 kg	11,190 kg						
4.5 m		*7,260 kg	6,860 kg	*12,200 kg	8,090 kg	*13,720 kg	10,740 kg	*16,340 kg	15,020 kg	*21,500 kg	*21,500 kg		
3.0 m		*7,570 kg	6,470 kg	12,330 kg	7,820 kg	*14,920 kg	10,240 kg	*18,570 kg	14,080 kg	*26,090 kg	21,130 kg		
1.5 m		*8,120 kg	6,340 kg	12,050 kg	7,570 kg	15,630 kg	9,800 kg	*20,210 kg	13,330 kg	*19,930 kg	19,930 kg		
0 m		*9,010 kg	6,470 kg	11,850 kg	7,390 kg	15,490 kg	9,490 kg	*20,850 kg	12,890 kg	*23,050 kg	19,550 kg		
-1.5 m		*10,450 kg	6,890 kg	11,780 kg	7,330 kg	15,330 kg	9,350 kg	*20,450 kg	12,730 kg	*26,730 kg	19,540 kg	*17,090 kg	*17,090 kg
-3.0 m		*12,130 kg	7,780 kg			*14,970 kg	9,390 kg	*18,940 kg	12,790 kg	*24,210 kg	19,750 kg	*26,380 kg	*26,380 kg
-4.5 m		*11,730 kg	9,620 kg			*11,860 kg	9,680 kg	*15,930 kg	13,080 kg	*20,150 kg	*20,150 kg	*25,160 kg	*25,160 kg

* Load is limited by hydraulic capacity rather than tipping. Ratings are based on ISO standard No. 10567. Rated loads do not exceed 87% of hydraulic lift capacity or 75% of tipping load.



LIFTING CAPACITY WITH LIFTING MODE



PC500LC-10M0 SE Spec.

- A: Reach from swing center.
- B: Arm top pin height.
- C: Lifting capacity.
- Cf: Rating over front.
- Cs: Rating over side.
- ⊗: Rating at maximum reach.

- Conditions:
- 6,670 mm one-piece boom.
 - 2,400 mm arm.
 - Without bucket.

PC500LC-10M0 SE Spec. Arm: 2,400 mm Without bucket Shoe: 600 mm triple grouser												
B \ A	⊗ MAX		9.0 m		7.5 m		6.0 m		4.5 m		3.0 m	
	Cf	Cs	Cf	Cs	Cf	Cs	Cf	Cs	Cf	Cs	Cf	Cs
6.0 m	*14,320 kg	9,530 kg			*14,670 kg	10,620 kg	*16,590 kg	15,110 kg				
4.5 m	13,130 kg	8,380 kg			*15,360 kg	10,290 kg	*18,400 kg	14,340 kg				
3.0 m	12,320 kg	7,810 kg			15,780 kg	9,890 kg	*20,200 kg	13,560 kg				
1.5 m	12,160 kg	7,660 kg			15,410 kg	9,570 kg	*21,190 kg	13,000 kg				
0 m	12,620 kg	7,910 kg			15,210 kg	9,390 kg	*20,990 kg	12,750 kg				
-1.5 m	13,950 kg	8,680 kg			15,200 kg	9,380 kg	*19,550 kg	12,730 kg	*24,530 kg	19,660 kg		
-3.0 m	*13,310 kg	10,440 kg					*16,490 kg	12,960 kg	*20,530 kg	20,000 kg	*22,950 kg	*22,950 kg
-4.5 m												

PC500LC-10M0 SE Spec. Arm: 2,400 mm Without bucket Shoe: 700 mm triple grouser												
B \ A	⊗ MAX		9.0 m		7.5 m		6.0 m		4.5 m		3.0 m	
	Cf	Cs	Cf	Cs	Cf	Cs	Cf	Cs	Cf	Cs	Cf	Cs
6.0 m	*14,320 kg	9,610 kg			*14,670 kg	10,710 kg	*16,560 kg	15,240 kg				
4.5 m	13,250 kg	8,460 kg			*15,360 kg	10,380 kg	*18,400 kg	14,470 kg				
3.0 m	12,440 kg	7,890 kg			15,930 kg	9,990 kg	*20,200 kg	13,690 kg				
1.5 m	12,280 kg	7,740 kg			15,560 kg	9,670 kg	*21,190 kg	13,130 kg				
0 m	12,750 kg	7,990 kg			15,360 kg	9,480 kg	*20,990 kg	12,870 kg				
-1.5 m	*13,960 kg	8,770 kg			*15,300 kg	9,480 kg	*19,550 kg	12,860 kg	*24,530 kg	19,850 kg		
-3.0 m	*13,310 kg	10,540 kg					*16,490 kg	13,080 kg	*20,530 kg	20,190 kg	*22,950 kg	*22,950 kg
-4.5 m												

PC500LC-10M0 SE Spec. Arm: 2,400 mm Without bucket Shoe: 800 mm triple grouser												
B \ A	⊗ MAX		9.0 m		7.5 m		6.0 m		4.5 m		3.0 m	
	Cf	Cs	Cf	Cs	Cf	Cs	Cf	Cs	Cf	Cs	Cf	Cs
6.0 m	*14,320 kg	9,700 kg			*14,670 kg	10,810 kg	*16,590 kg	15,360 kg				
4.5 m	13,380 kg	8,540 kg			*15,360 kg	10,470 kg	*18,400 kg	14,590 kg				
3.0 m	12,560 kg	7,970 kg			16,080 kg	10,080 kg	*20,200 kg	13,810 kg				
1.5 m	12,400 kg	7,820 kg			15,720 kg	9,760 kg	*21,190 kg	13,250 kg				
0 m	12,880 kg	8,070 kg			15,510 kg	9,570 kg	*20,990 kg	13,000 kg				
-1.5 m	*13,960 kg	8,860 kg			*15,300 kg	9,570 kg	*19,550 kg	12,980 kg	*24,530 kg	20,030 kg		
-3.0 m	*13,310 kg	10,640 kg					*16,490 kg	13,210 kg	*20,530 kg	20,370 kg	*22,950 kg	*22,950 kg
-4.5 m												

PC500LC-10M0 SE Spec. Arm: 2,400 mm Without bucket Shoe: 900 mm triple grouser												
B \ A	⊗ MAX		9.0 m		7.5 m		6.0 m		4.5 m		3.0 m	
	Cf	Cs	Cf	Cs	Cf	Cs	Cf	Cs	Cf	Cs	Cf	Cs
6.0 m	*14,320 kg	9,780 kg			*14,670 kg	10,900 kg	*16,590 kg	15,480 kg				
4.5 m	13,510 kg	8,620 kg			*15,360 kg	10,560 kg	*18,400 kg	14,710 kg				
3.0 m	12,680 kg	8,040 kg			*16,190 kg	10,170 kg	*20,200 kg	13,930 kg				
1.5 m	12,520 kg	7,890 kg			15,870 kg	9,850 kg	*21,190 kg	13,370 kg				
0 m	13,000 kg	8,150 kg			15,660 kg	9,660 kg	*20,990 kg	13,120 kg				
-1.5 m	*13,960 kg	8,940 kg			*15,300 kg	9,660 kg	*19,550 kg	13,100 kg	*24,530 kg	20,210 kg		
-3.0 m	*13,310 kg	10,740 kg					*16,490 kg	13,330 kg	*20,530 kg	*20,530 kg	*22,950 kg	*22,950 kg
-4.5 m												

* Load is limited by hydraulic capacity rather than tipping. Ratings are based on ISO standard No. 10567. Rated loads do not exceed 87% of hydraulic lift capacity or 75% of tipping load.

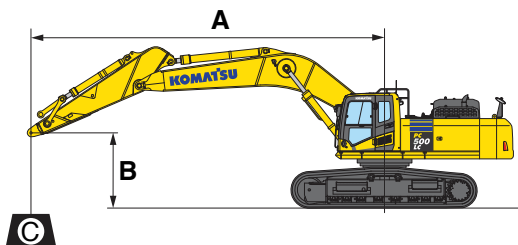


LIFTING CAPACITY WITH LIFTING MODE

PC500LC-10M0 SE Spec.

- A: Reach from swing center.
- B: Arm top pin height.
- C: Lifting capacity.
- Cf: Rating over front.
- Cs: Rating over side.
- ⊗: Rating at maximum reach.

- Conditions:
- 6,670 mm one-piece boom.
 - 2,900 mm arm.
 - Without bucket.



PC500LC-10M0 SE Spec.		Arm: 2,900 mm		Without bucket		Shoe: 600 mm triple grouser							
B	A	⊗ MAX		9.0 m		7.5 m		6.0 m		4.5 m		3.0 m	
		Cf	Cs	Cf	Cs	Cf	Cs	Cf	Cs	Cf	Cs	Cf	Cs
6.0 m		*13,210 kg	8,720 kg			*13,810 kg	10,660 kg	*15,530 kg	15,250 kg				
4.5 m		12,130 kg	7,720 kg			*14,650 kg	10,270 kg	*17,410 kg	14,430 kg	*22,870 kg	22,390 kg		
3.0 m		11,410 kg	7,210 kg	11,840 kg	7,470 kg	*15,610 kg	9,830 kg	*19,380 kg	13,570 kg				
1.5 m		11,240 kg	7,050 kg	11,630 kg	7,280 kg	15,300 kg	9,450 kg	*20,690 kg	12,910 kg				
0 m		11,600 kg	7,230 kg			15,020 kg	9,210 kg	*20,900 kg	12,550 kg	*24,620 kg	19,170 kg		
-1.5 m		12,660 kg	7,850 kg			14,950 kg	9,140 kg	*19,910 kg	12,460 kg	*25,680 kg	19,220 kg		
-3.0 m		*13,050 kg	9,220 kg			*13,210 kg	9,300 kg	*17,480 kg	12,600 kg	*22,140 kg	19,510 kg	*26,930 kg	*26,930 kg
-4.5 m		*11,780 kg	*11,780 kg					*12,460 kg	*12,460 kg	*16,350 kg	*16,350 kg		

PC500LC-10M0 SE Spec.		Arm: 2,900 mm		Without bucket		Shoe: 700 mm triple grouser							
B	A	⊗ MAX		9.0 m		7.5 m		6.0 m		4.5 m		3.0 m	
		Cf	Cs	Cf	Cs	Cf	Cs	Cf	Cs	Cf	Cs	Cf	Cs
6.0 m		*13,210 kg	8,800 kg			*13,810 kg	10,750 kg	*15,530 kg	15,370 kg				
4.5 m		12,250 kg	7,790 kg			*14,650 kg	10,370 kg	*17,410 kg	14,560 kg	*22,870 kg	22,580 kg		
3.0 m		11,530 kg	7,280 kg	11,960 kg	7,550 kg	*15,610 kg	9,920 kg	*19,380 kg	13,690 kg				
1.5 m		11,360 kg	7,120 kg	11,750 kg	7,360 kg	15,450 kg	9,540 kg	*20,690 kg	13,030 kg				
0 m		11,720 kg	7,310 kg			15,180 kg	9,300 kg	*20,900 kg	12,670 kg	*24,620 kg	19,350 kg		
-1.5 m		12,790 kg	7,930 kg			15,100 kg	9,230 kg	*19,910 kg	12,580 kg	*25,680 kg	19,400 kg		
-3.0 m		*13,050 kg	9,310 kg			*13,210 kg	9,390 kg	*17,480 kg	12,730 kg	*22,140 kg	19,690 kg	*26,930 kg	*26,930 kg
-4.5 m		*11,780 kg	*11,780 kg					*12,460 kg	*12,460 kg	*16,350 kg	*16,350 kg		

PC500LC-10M0 SE Spec.		Arm: 2,900 mm		Without bucket		Shoe: 800 mm triple grouser							
B	A	⊗ MAX		9.0 m		7.5 m		6.0 m		4.5 m		3.0 m	
		Cf	Cs	Cf	Cs	Cf	Cs	Cf	Cs	Cf	Cs	Cf	Cs
6.0 m		*13,210 kg	8,880 kg			*13,810 kg	10,840 kg	*15,530 kg	15,490 kg				
4.5 m		12,370 kg	7,870 kg			*14,650 kg	10,460 kg	*17,410 kg	14,680 kg	*22,870 kg	22,760 kg		
3.0 m		11,640 kg	7,350 kg	12,080 kg	7,620 kg	*15,610 kg	10,020 kg	*19,380 kg	13,820 kg				
1.5 m		11,470 kg	7,190 kg	11,870 kg	7,430 kg	15,610 kg	9,630 kg	*20,690 kg	13,150 kg				
0 m		11,840 kg	7,380 kg			15,330 kg	9,390 kg	*20,900 kg	12,790 kg	*24,620 kg	19,540 kg		
-1.5 m		12,920 kg	8,010 kg			15,250 kg	9,320 kg	*19,910 kg	12,700 kg	*25,680 kg	19,590 kg		
-3.0 m		*13,050 kg	9,410 kg			*13,210 kg	9,480 kg	*17,480 kg	12,850 kg	*22,140 kg	19,870 kg	*26,930 kg	*26,930 kg
-4.5 m		*11,780 kg	*11,780 kg					*12,460 kg	*12,460 kg	*16,350 kg	*16,350 kg		

PC500LC-10M0 SE Spec.		Arm: 2,900 mm		Without bucket		Shoe: 900 mm triple grouser							
B	A	⊗ MAX		9.0 m		7.5 m		6.0 m		4.5 m		3.0 m	
		Cf	Cs	Cf	Cs	Cf	Cs	Cf	Cs	Cf	Cs	Cf	Cs
6.0 m		*13,210 kg	8,950 kg			*13,810 kg	10,930 kg	*15,530 kg	*15,530 kg				
4.5 m		12,490 kg	7,940 kg			*14,650 kg	10,550 kg	*17,410 kg	14,800 kg	*22,870 kg	*22,870 kg		
3.0 m		11,760 kg	7,420 kg	12,190 kg	7,690 kg	*15,610 kg	10,110 kg	*19,380 kg	13,940 kg				
1.5 m		11,590 kg	7,260 kg	11,980 kg	7,500 kg	15,760 kg	9,720 kg	*20,690 kg	13,270 kg				
0 m		11,960 kg	7,450 kg			15,480 kg	9,480 kg	*20,900 kg	12,910 kg	*24,620 kg	19,720 kg		
-1.5 m		13,050 kg	8,090 kg			15,400 kg	9,410 kg	*19,910 kg	12,820 kg	*25,680 kg	19,770 kg		
-3.0 m		*13,050 kg	9,500 kg			*13,210 kg	9,570 kg	*17,480 kg	12,970 kg	*22,140 kg	20,050 kg	*26,930 kg	*26,930 kg
-4.5 m		*11,780 kg	*11,780 kg					*12,460 kg	*12,460 kg	*16,350 kg	*16,350 kg		

* Load is limited by hydraulic capacity rather than tipping. Ratings are based on ISO standard No. 10567. Rated loads do not exceed 87% of hydraulic lift capacity or 75% of tipping load.

Major component weights

Items		Weight for a machine (kg)
Boom (Incl. piping, pins, arm cylinder)	7.1 m	4,480
	6.7 m	4,410
Arm (Incl. piping, pins, bucket cylinder)	3.4 m	2,740
	2.9 m	3,000
	2.4 m	2,660
Bucket (Without linkage)	4.0 m ³ GP	2,520
	3.7 m ³ GP	2,390
	3.5 m ³ HD	2,720
	3.1 m ³ GP	2,310
	3.0 m ³ HD	2,530
	2.5 m ³ HD	2,410
Counterweight		10,740
Undercarriage	LC	6,560
Shoe assembly (With link)	600 mm triple grouser shoes	5,240
	700 mm triple grouser shoes	5,740
	800 mm triple grouser shoes	6,240
	900 mm triple grouser shoes	6,730
	600 mm double grouser shoes	5,360

»Standard specification

Operating weight: PC500LC-10M0: 49,400 kg.

Operating weight including below spec.

Boom: 6,670 mm.

Arm: 2,400 mm.

Bucket: 2.5 m³ HD.

Shoe: 600 mm triple grouser.

Rated capacity of lubricants, coolant, full fuel tank, 80 kg operator.



STANDARD EQUIPMENT

ENGINE

- »Air pre-cleaner.
- »Automatic engine warm-up system.
- »Compliant bio diesel fuel.
- »Coolant filter.
- »Dry type air cleaner, double element.
- »Electric priming pump.
- »Engine, Komatsu SAA6D125E-5.
- »Engine overheat prevention system.
- »Fan clutch.
- »Fuel pre-filter (With water separator).
- »Radiator and oil cooler dust proof net.

ELECTRICAL SYSTEM

- »Alternator, 24 V/60 A brushless.
- »Auto-decelerator.
- »Batteries, 2 X 12 V/140 Ah.
- »Battery disconnect switch with operation lamp.
- »Electric horn.
- »Starting motor, 24 V/11 kW.
- »Working light, 4 (Boom, RH and 2 on cab).

HYDRAULIC SYSTEM

- »Arm holding valve.
- »Boom holding valve.
- »Clogging sensor for hydraulic oil return filter.
- »Inline filter.
- »Pilot filter.
- »Power maximizing system.
- »Pressure proportional control (PPC) hydraulic control system.
- »Two-mode setting for boom.
- »Working mode selection system.

GUARDS AND COVERS

- »Fan guard structure.
- »Heavy duty revolving frame undercover.
- »Revolving frame deck guard.
- »Track roller guards (Full length).

UNDERCARRIAGE

- »Hydraulic track adjusters (Each side).
- »Track frame undercover.
- »Track roller
-8 each side.
- »Track shoe
-600 mm triple grouser.

OPERATOR ENVIRONMENT

- »A/C with defroster.
- »AUX equipped with radio.
- »Large multi-lingual and high resolution LCD monitor.
- »Lock lever.
- »Operator protective top guard (OPG), level 1 (ISO 10262).
- »Rear view mirrors (RH, LH, sidewise, rear).
- »Seat belt, retractable.
- »Suspension seat.

OTHER EQUIPMENT

- »Blow-by sensor.
- »Counterweight, 10,740 kg.
- »KOMTRAX.
- »Rear reflector.
- »Slip-resistant plates.
- »Travel alarm.



OPTIONAL EQUIPMENT

ELECTRICAL SYSTEM

- »Working lights (1 on counterweight).

HYDRAULIC SYSTEM

- »Attachment piping.
- »Clogging sensor for breaker return filter.
- »Service valve.

GUARDS AND COVERS

- »Additional handrail.
- »Bolt-on top guard, OPG top guard level 2 (ISO 10262).
- »Cab front guard
 - Full height guard, OPG level 1 (ISO 10262).
 - Full height guard, OPG level 2 (ISO 10262).
 - Half height guard.

UNDERCARRIAGE

- »Shoes, double grouser shoes
-600 mm.
- »Shoes, triple grouser shoes
-700 mm, 800 mm, 900 mm.

OPERATOR ENVIRONMENT

- »Cab accessories
 - Rain visor.
 - Sun visor.
- »Rear view monitor system.

WORK EQUIPMENT

- »Arms
 - PC500LC-10M0.
3,380 mm arm assembly.
 - PC500LC-10M0 SE spec.
2,400 mm SE arm assembly.
 - 2,900 mm SE arm assembly.
- »Booms (Backhoe)
 - PC500LC-10M0.
7,060 mm boom assembly.
 - PC500LC-10M0 SE spec.
6,670 mm SE boom assembly.

SERVICING EQUIPMENT

- »Fuel refill pump.
- »Oil sampling port (Engine & hydraulic).
- »Preventive Maintenance (PM) service-connector.

**Optional equipment may not be available in your country.
Please contact your Distributor for further information.**



SATELLITE MONITORING SYSTEM

KOMTRAX PLUS is a revolutionary tracking system designed to save time and money. Nowadays, the equipment can be tracked anytime and anywhere. This valuable data, received via the KOMTRAX website, can be used to optimize planning of the movements and performance of the equipment.

FEATURES

» LOCATION

KOMTRAX uses a satellite positioning network to inform the location of the equipment.

» GEOFENCE

In partnership with their Komatsu Distributor, owners can create virtual fences (Geo) to receive alerts when the equipment enters or leaves the designated range for operations.

» SERVICE METER READING

Daily report of the equipment's working hours, which allows planning maintenance and replacement of components.

» KOMTRAX OPERATION MAPS

In the operation maps you can check the times of the day when the equipment is in operation and if the workers are performing their duties in the stipulated times.

» FUEL MEASUREMENT LEVEL

Shows the amount of fuel at the end of the working day.

» WATER TEMPERATURE DAILY RECORD

Constant record of the increase of engine water temperature with a daily report at the end of the day.

» CAUTIONS

If a light turns on in the cab of the equipment, it indicates that a problem occurs. From the website of the application you can check the reason for the problem, the time it occurred and a record number will be generated.

» ABNORMALITY CODES

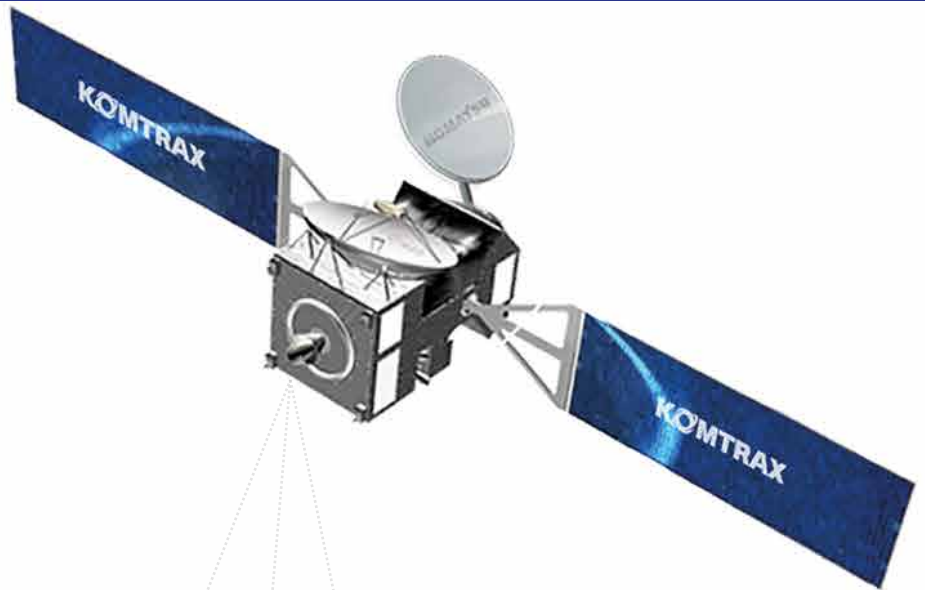
Abnormality codes are transmitted to the Komatsu Distributor for troubleshooting before technicians arrive at the workplace. An email notification is also sent with the code of what happened.

» NOTICE OF MAINTENANCE REPLACEMENT

The system generates alerts to inform that the equipment requires replacement of elements like filters and oil.

» EQUIPMENT KEY HOURS

Detailed information on key equipment hours such as excavation, travel, unloading and elevation. This can help to monitor and compare equipment performance, in addition to working hours and idle times.



KOMTRAX

FEATURES

» **LOADING FREQUENCY**

Information on the load factor of the equipment to know if it is performing in a light, medium or heavy work.

» **ANTI-THEFT ENGINE LOCK**

KOMTRAX has a system to lock and unlock the motor of the equipment, which will allow the operation only on preset days, hours and areas.

» **FUEL CONSUMPTION**

On new Komatsu equipment, you can get the actual status of the fuel gallons consumed, besides an average of the fuel spent per hour during the period of operation.

» **MONTHLY AND ANNUAL DATA REPORTS**

KOMTRAX generates summaries of all critical system data to help with analysis of fleet utilization, equipment scheduling, future equipment purchases, labor costs, etc.

Check with your Komatsu dealer for the information available for your model and service availability in your country.



Product designs, specifications and/or data in this document are provided for informational purposes only and are not warranties of any kind. Product designs and/or specifications may be changed at any time without notice. The only warranties that apply to sales of products and services are standard written warranties, which will be furnished upon request.

Komatsu, and related logo are trademarks of Komatsu Ltd. or one of its affiliates.

© 2017 Komatsu Ltd. or one of its affiliates. All rights reserved.

KOMATSU[®]

For further information, contact your Distributor or visit our website www.komatsulatioamerica.com

KLAT-EQ050/001-2019

