

**KATO**

# NK-300E-v

## FULLY HYDRAULIC TRUCK CRANE

Maximum rated lifting capacity : 30t × 3.0m

Maximum boom length : 33.0m Maximum fly jib length : 14.5m

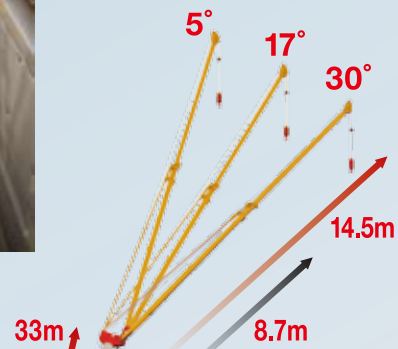
Maximum lifting height : 33.0m (boom), 47.5m (33m boom + 14.5m jib offset 5°)



- Carrier : FAW CA5320JQZ
- Gross vehicle weight : 30,900kg
- Dimensions (L.W.H.) :  
12.58 × 2.5 × 3.88m
- Engine output :  
206kW / 2,300min<sup>-1</sup> (ISO Net)

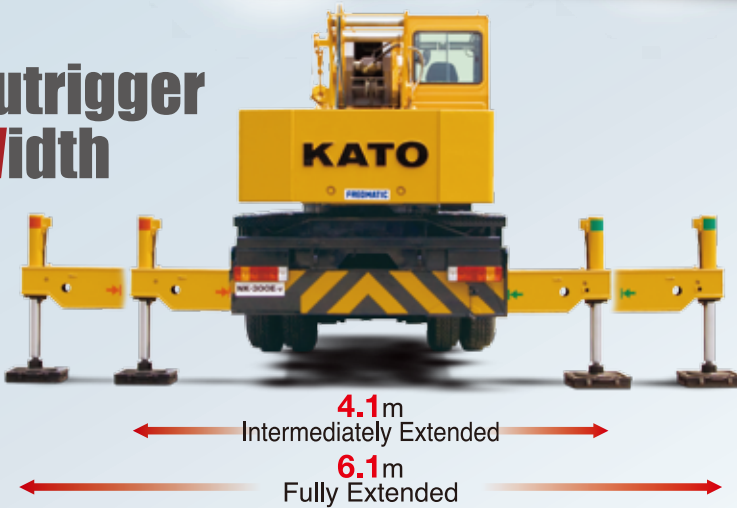


## Operator's Cab



## Fly jib Offset

## Outrigger Width



<http://www.kato-works.co.jp>

NOTE : Illustrations may include optional equipment. KATO products and specifications are subject to improvements and changes without notice.

Address inquiries to :

**KATO** KATO WORKS CO.,LTD.

QUALITY & EXPERIENCE  
SINCE 1895

9-37, Higashi-ohi 1-chome, Shinagawa-ku, Tokyo 140-0011, Japan.

Tel. : Head Office Tokyo (03) 3458-1111

Overseas Marketing Department Tokyo (03) 3458-1115

Fax. : Tokyo (03) 3458-1163

