

Technical sheet :

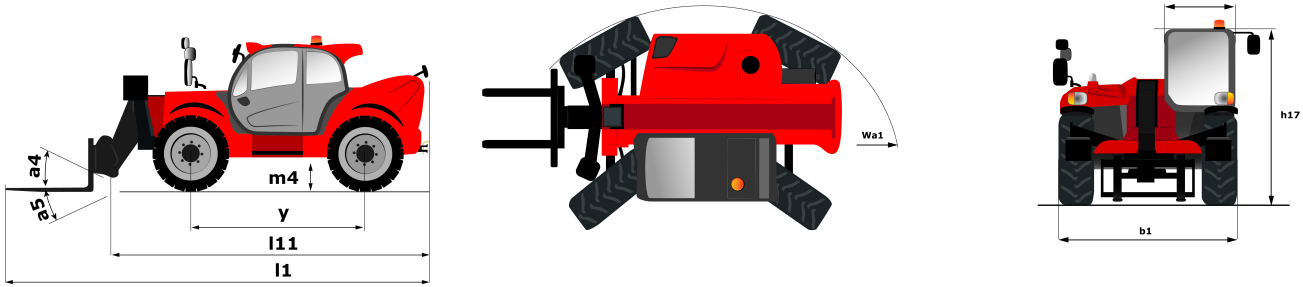
MT 1840 HA



Capacities		Imperial
Max. capacity	Q	8818 lbs
Max. lifting height	h3	57 ft 7 in
Max. Reach	l4	42 ft 11 in
Breakout force with bucket		8390 daN
Weight and dimensions		
Overall length to carriage	l11	20 ft 3 in
Overall width	b1	7 ft 11 in
Overall height	h17	8 ft 2 in
Wheelbase	y	0.121 in
Ground clearance	m4	1 ft 5 in
Overall cab width	b4	2 ft 11 in
Tilt-up angle	a4	90 °
Tilt-down angle	a5	90 °
External turning radius (over tyres)	Wa1	13 ft 2 in
Unladen weight (with man basket)		27955 lbs
Tyres type		Pneumatic
Standard tyres		Alliance 400/80 - 24 - 162A8
Forks length / width / section	l / e / s	47.244 in x 4.921 in / 1.969 in
Performances		
Lifting		14.2 s
Lowering		14.6 s
Extension		18.6 s
Retraction		15.5 s
Crowd		5.1 s
Dump		4.8 s
Engine		
Engine brand		Perkins
Engine norm		Stage IV / Tier 4 Final
Engine model		854E-E34TA
Number of cylinders / Capacity of cylinders		4 - 207.48 in³
I.C. Engine power rating - Power (kW)		100 Hp / 75 kW
Max. torque / Engine rotation		430 Nm @ 1400 rpm
Drawbar pull (Laden)		7220 daN
Transmission		
Transmission type		Hydrostatic
Number of gears (forward / reverse)		3 / 3
Max. travel speed		15.5 mph
Parking brake		Automatic parking brake
Service brake		Oil-Immersed multi-discs braking on front axles
Hydraulics		
Hydraulic pump type		Gear pump
Hydraulic flow / Pressure		170 l/min / 19 PSI
Tank capacities		
Engine oil		1.98 US gal
Hydraulic oil		35.67 US gal
Fuel tank		36.99 US gal
DEF tank capacity		5.71 US gal
Noise and vibration		
Noise at driving position (LpA)		18 dB(A)
Noise to environment (LwA)		103 dB(A)
Vibration on hands/arms		< 8.2 ft/s
Compatible platform		
Platform capacity	Q	2205 lbs
Number of people (inside)		3
Platform dimensions (length x width)	lp / ep	16404 ft 2 in x 3937 ft
Platform weight*		2535 lbs
Miscellaneous		
Steering wheels (front / rear)		2 / 2
Drive wheels (front / rear)		2 / 2
Safety / Safety cab homologation		Standard EN 15000 / ROPS - FOPS cab (level 2)
Controls		JSM

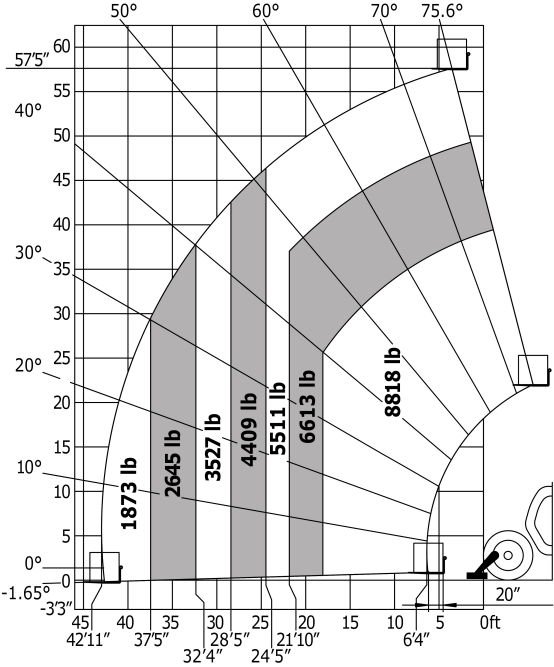
Miscellaneous		
Additional information		Data indicated with basket basket, except max. capacity, lifting height and offset.

Dimensional drawing

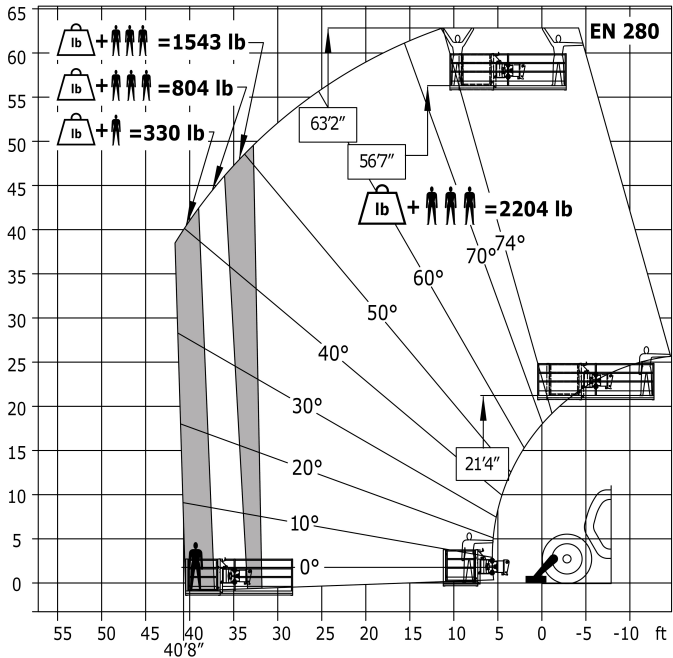


Load chart

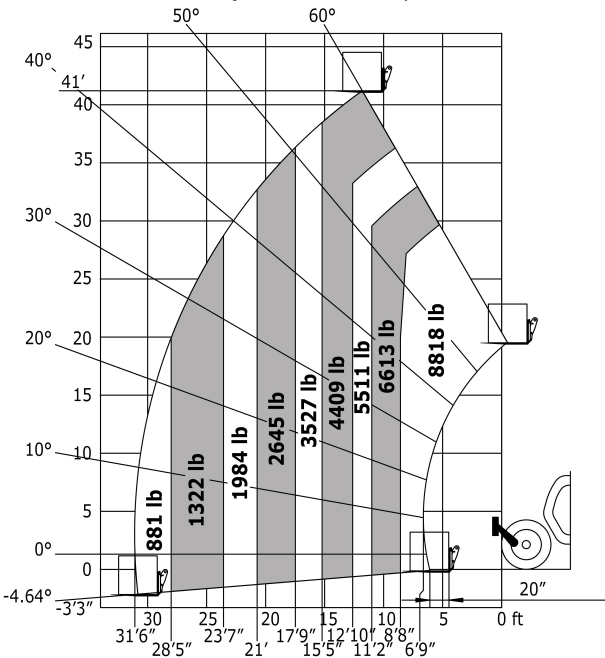
Machine on stabilizers with forks - with levelling device Imperial

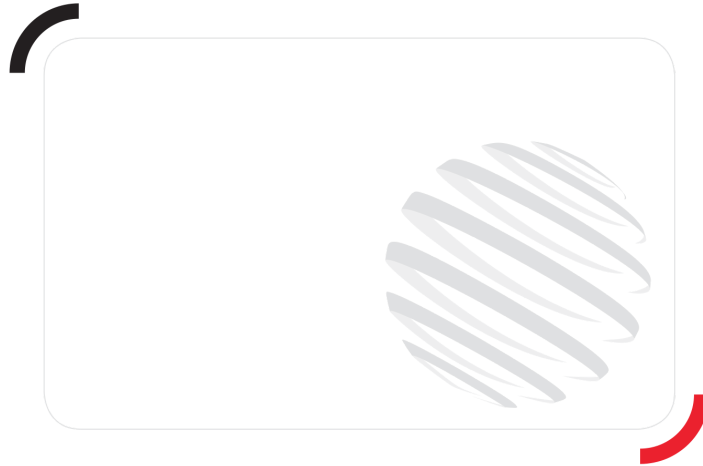


Machine on stabilizers with bucket basket and levelling device Imperial



Machine on tyres with forks Imperial





Siège Social
430 rue de l'Aubinière - 44150 Ancenis Cedex - France
Tel: +33(0)2 40 09 10 11 - Fax: +33 (0)2 40 09 10 97
www.manitou.com



This brochure describes versions and configuration options for Manitou products which may be fitted with different equipment. The equipment described in this brochure may be standard, optional or not available depending on version. Manitou reserves the right to change the specifications shown and described at any time and without prior warning. The manufacturer is not liable for the specifications given. For more information, contact your Manitou dealer. Non-contractual document. Product descriptions may differ from actual products. List of specifications is not comprehensive. The logos and visual identity of the company are the property of Manitou and may not be used without authorisation. All rights reserved. The photos and diagrams contained in this brochure are provided for information only.

MANITOU BF SA - Limited company with board of directors - Share capital: 39,668,399 euros - 857 802 508
RCS Nantes