



MS MULTISYSTEM



Mantovanibenne s.r.l. - Mirandola (Mo) Italy - Tel. +39 0535 615811 - Fax +39 0535 615830
sales@mantovanibenne.com

MS Multisystem

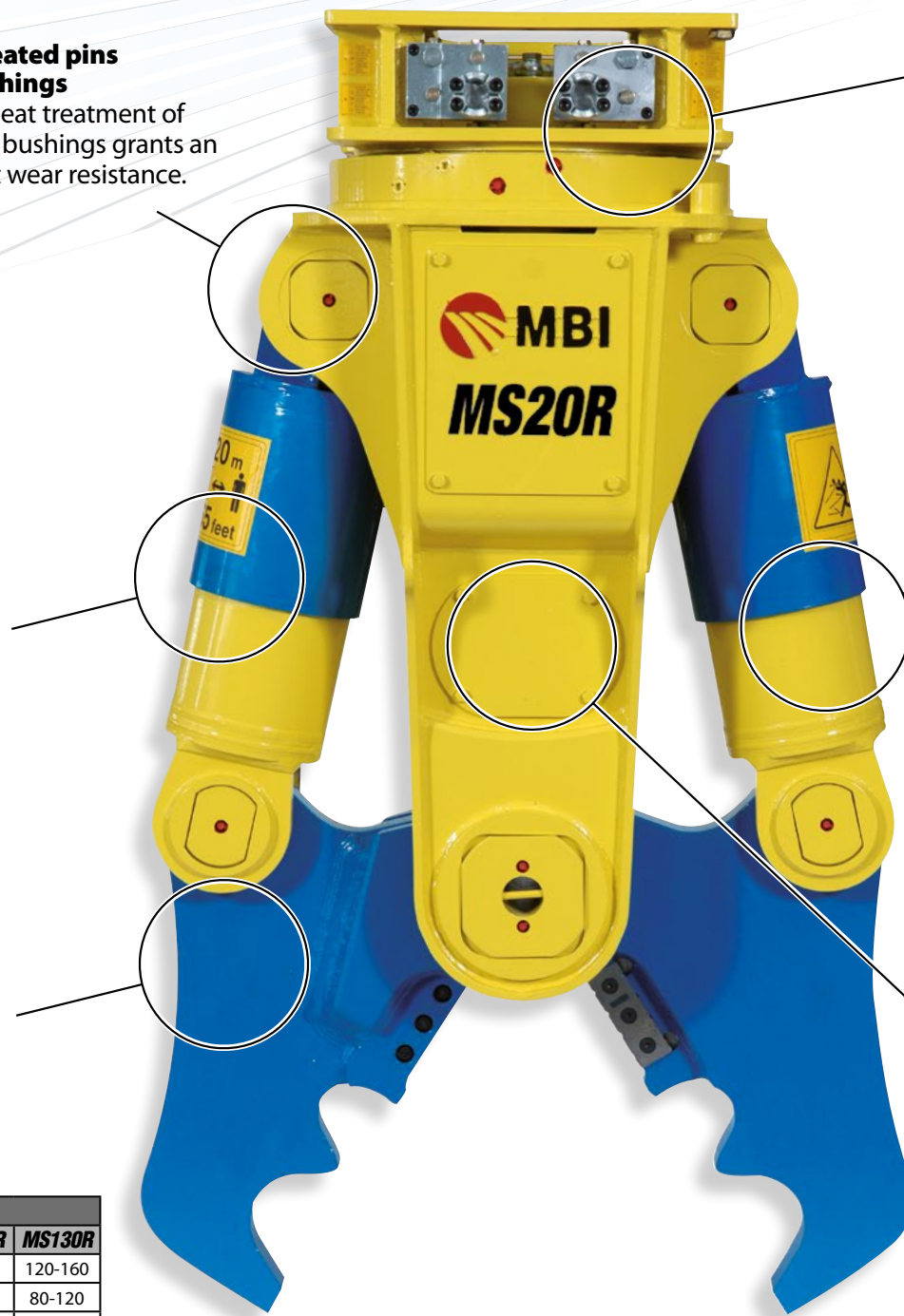
The MS Multisystem is the most versatile attachment in the Mantovanibenne product range. It can be used for almost any demolition requirement, when fitted with the correct jaw set: from concrete crushing and recycling to dismantling of metal structures and tanks.



Heat-treated pins and bushings
Special heat treatment of pins and bushings grants an excellent wear resistance.

Reversed cylinder and forged rod
Forged rod, without any welding, assures maximum reliability. Reversed cylinders and protection save the rod from external shocks during demolition.

Interchangeable jaws kits
Depending on the work that has to be carried out it is possible to apply the most suitable jaw kit needed. To facilitate the replacement of the jaw there is a particular bushing system that keeps the two parts together.



Hydraulic rotation
The sturdy rotation allows accurate positioning of the attachment in any working application and in complete safety due to the presence of a double-row thrust bearing.

High Power
Thanks to the work of the two powerful cylinders this attachment gives an enormous force to the tips.

Speed Valve
The presence of the patented Speed Valve allows faster cycle times (opening/closing), improving productivity. It also controls and protects the hydraulic circuit from pressure peaks.



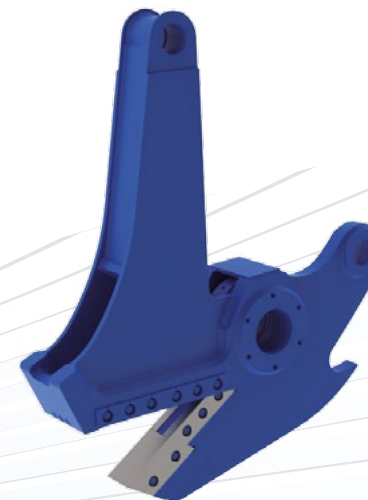
CR
CRUSHER JAW SET



CP
PULVERISER JAW SET



SH
SHEAR JAW SET



PSH
PLATE SHEAR JAW SET



RC
RAIL CUTTER JAW SET



CC
COMBI CUTTER JAW SET

We are constantly improving our products and therefore we reserve the right to change the design and technical specifications without prior notice.

TECHNICAL DATA		MS15R	MS20R	MS30R	MS40R	MS60R	MS130R	
Excavator Weight with MS bucket place	t	15-21	18-25	25-35	35-50	50-75	120-160	
Excavator Weight with MS stick place	t	10-15	12-18	15-24	24-30	30-50	80-120	
Hydraulic working pressure	bar	320-350	320-350	320-350	320-350	320-350	320-350	
Oil flow	l/min	130-150	150-200	200-250	250-300	280-320	600-800	
MS + CRUSHER JAW SET CR	Tool weight*	kg	1650	2250	2750	4550	6500	14000
	Opening	mm	750	820	900	1200	1540	2500
	Height	mm	1860	2060	2240	3045	3255	4300
MS + PULVERISER JAW SET CP	Tool weight*	kg	1700	2300	2900	4650	7000	○
	Opening	mm	650	730	875	950	1250	○
	Height	mm	1830	2020	2260	2950	3095	○
MS + SHEAR JAW SET SH	Tool weight*	kg	1700	2250	2850	4550	6600	14000
	Opening	mm	330	445	485	620	875	1150
	Height	mm	1800	1990	2070	2845	3165	4150
MS + COMBI CUTTER JAW SET CC	Tool weight*	kg	1700	2300	2900	4700	6600	○
	Opening	mm	700	700	825	1075	1385	○
	Height	mm	1860	2100	2220	3070	3355	○
MS + PLATE SHEAR JAW SET PSH	Tool weight*	kg	○	2150	2650	4300	6000	○
	Opening	mm	○	225	225	285	400	○
	Height	mm	○	2085	2160	2705	3090	○
MS + RAIL CUTTER JAW SET RC	Tool weight*	kg	○	○	3100	○	○	○
	Opening	mm	○	○	245	○	○	○
	Height	mm	○	○	1750	○	○	○

* Tool weight does include Mantovanibenne top bracket.
○ Not available