



**MP15/MP20  
MP30/MP40**

**Multi-Processor**

**CAT<sup>®</sup>**

Multiprocessor	Cat Excavator	Linkage
MP15	320B L	B
	322B L	B/S
MP20	322B L	S
	325B L	C
	330B L	D

Multiprocessor	Cat Excavator	Linkage
MP30	330B L	D
	345B L	F
MP40	365B L	V
	375 L	H

## Cat® MP15, MP20, MP30, MP40 Multi-Processor

*With interchangeable jaws*

The Caterpillar MP15, MP20, MP30 and MP40 are highly versatile demolition tools ideally suited for Caterpillar Hydraulic Excavators. Each Multi-Processor can be equipped with a wide selection of interchangeable jaws. Jaws are attached to the universal housing incorporating the hydraulic cylinder and the 360° rotation system. With one common housing and properly selected sets of jaws a contractor can achieve exceptional flexibility with minimum investment, accomplishing most tasks encountered on a demolition

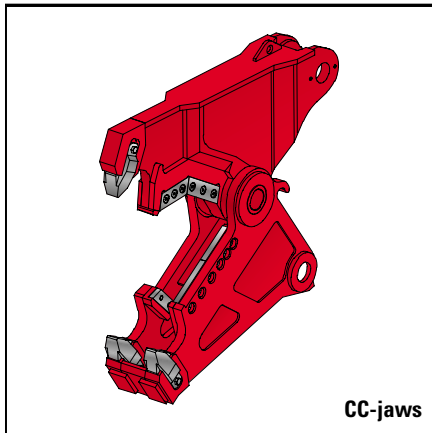
job. The tool will cut, crush, or pulverize even the most highly reinforced concrete structures, including structural steel beams, pipes, and cable as well as steel plate and storage tanks. As they are non-impact demolition tools, the universal processors also work at a relatively low noise level.

After initial calibration, the various jaws can be quickly installed or changed due to the well-placed lifting eyes and adjustable stop bolts on the jaws and housing.

The single large diameter, cross-mounted cylinder provides exceptional cutting and crushing force. The high force is applied through the jaws which are all manufactured of high-quality tool steel with outstanding tensile strength. The result is a force-to-weight ratio which makes for very cost-effective demolition platforms. Speed valves mounted on the hydraulic cylinders reduce the cycle time and increase productivity. Dedicated bolt-on mounting brackets and tool hydraulics maximize the cost effectiveness and flexibility of the tool/carrier system. Hydraulics can be factory- or field-installed on the hydraulic excavators.



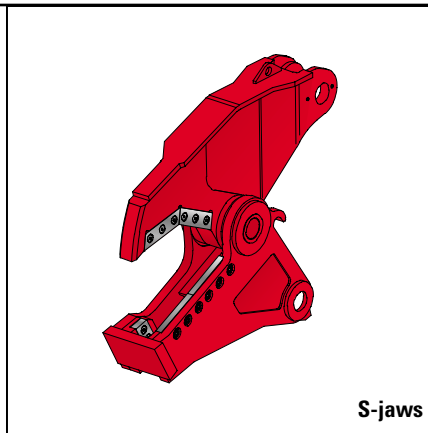
# Caterpillar Multi-Processor Interchangeable Jaws.



CC-jaws

## Multi-Processor with Concrete Cutter Jaws (CC)

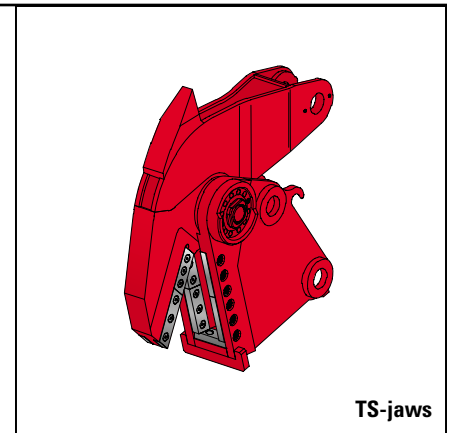
- For precise demolition/cutting of heavily reinforced concrete structures.
- Cuts structural steel and pipe.
- Equipped with replaceable concrete crusher teeth and reversible steel cutting knives.



S-jaws

## Multi-Processor with Shear Jaws (S)

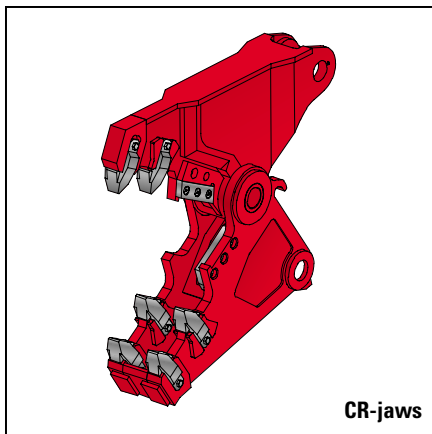
- For demolition of steel structures.
- Cuts angle and channel iron, beams, pipe, rebar, cable and tires.
- Knives are reversible.



TS-jaws

## Multi-Processor with Tank Shear Jaws (TS)

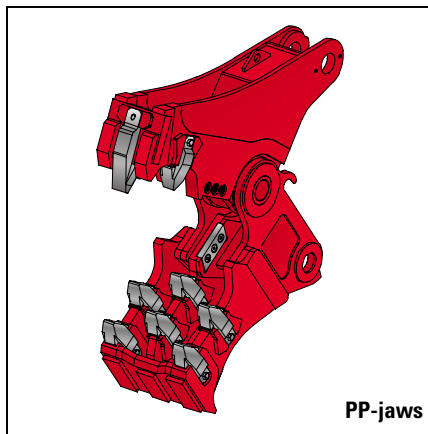
- Quickly cuts steel plate on barges, railway cars, grain, water, oil, and fuel tanks. Dual knives on the moving and static jaws produce smooth, straight edges.
- All knives are reversible.
- Available for MP20 and MP30.



CR-jaws

## Multi-Processor with Crusher Jaws (CR)

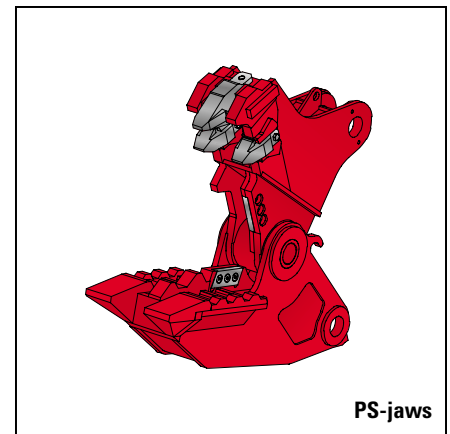
- For demolition of moderately reinforced concrete structures. Capable of crushing concrete and cutting rebar.
- Replaceable crusher teeth and reversible knives.



PP-jaws

## Multi-Processor with Primary Pulverizer Jaws (PP)

- Combines capability to demolish and recycle moderately reinforced concrete structures. Pulverizes concrete, cuts rebar and separates rebar from concrete.
- Replaceable crusher teeth and reversible knives.
- Not for MP40



PS-jaws

## Multi-Processor with Secondary Pulverizer Jaws (PS)

- Recycles demolished concrete by pulverizing concrete, separating concrete and rebar, and cutting rebar as needed.

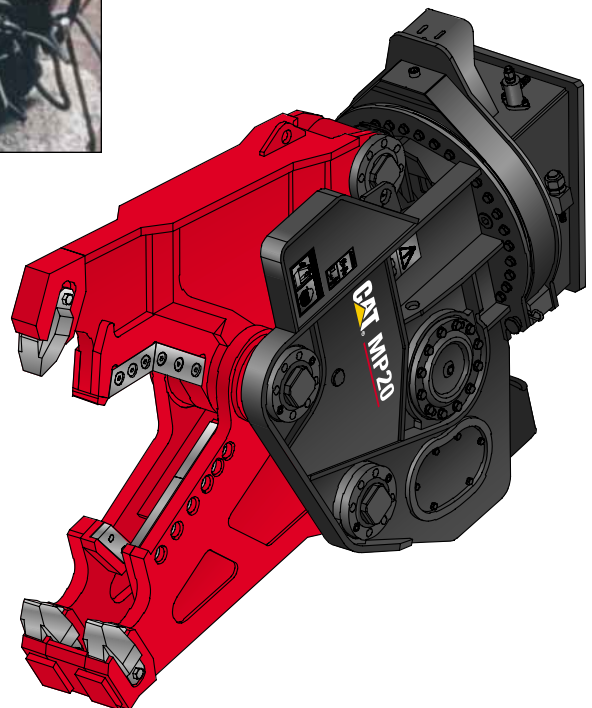
**All jaw sets can be interchanged quickly with the lifting eyes and the adjustable stopbolts on jaws and body.**

## Multi-Processor with Concrete Cutter Jaws



### Multi-Processor with Concrete Cutter Jaws (CC)

- For precise demolition/cutting of heavily reinforced concrete structures.
- Cuts structural steel and pipe.
- Equipped with replaceable concrete crusher teeth and reversible steel cutting knives.



## Specifications

All dimensions and weights are approximate.

		<b>MP15</b>	<b>MP20</b>	<b>MP30</b>	<b>MP40</b>
Weight total – housing, jaw and bracket	kg	1800	2600	3600	5800
Weight of the jaw	kg	650	1000	1300	2200
<b>Dimensions</b>					
Length	mm	2200	2400	2800	3500
Height	mm	1510	1750	1980	2340
Width	mm	800	800	1010	1180
Jaw width (fixed)	mm	300	360	380	460
Jaw width (moving)	mm	100	130	130	160
Jaw opening	mm	670	820	975	1280
Jaw depth	mm	670	790	890	1100
Cutter-length	mm	400	460	520	600
<b>Maximum crushing/shear force</b>					
Tooth-jaw tip	kN	700	950	1250	1500
Front cutter tip	kN	1000	1400	1850	2200
Primary blade center	kN	2200	3000	4100	4400
<b>Maximum oil flow</b>					
Hydraulic-cylinder	l/min	150	200	300	400
Cycle time (open, close, open)	sec	5	6	6.5	7.5
Rotation	l/min	40	40	40	80
<b>Maximum working pressure</b>					
Hydraulic-cylinder	kPa	35000	35000	35000	35000
Rotation	kPa	14000	14000	14000	14000

## Cutting Capacity

		<b>MP15</b>	<b>MP20</b>	<b>MP30</b>	<b>MP40</b>
<b>Narrow I-beams</b>					
Height	mm	300	400	500	600
Flange width	mm	150	180	200	600
Flange thickness	mm	10.7	13.5	16.0	19.0
Web thickness	mm	7.1	8.6	10.2	12.0
<b>Wide I-beams</b>					
Height	mm	190	250	310	390
Flange width	mm	200	260	300	300
Flange thickness	mm	10	12.5	15.5	19.0
Web thickness	mm	6.5	7.5	9.0	11.0
Solid-round	mm	65	80	90	100
Solid-square	mm	60	70	80	90

The above profiles provide an indication of the shear's cutting capability.

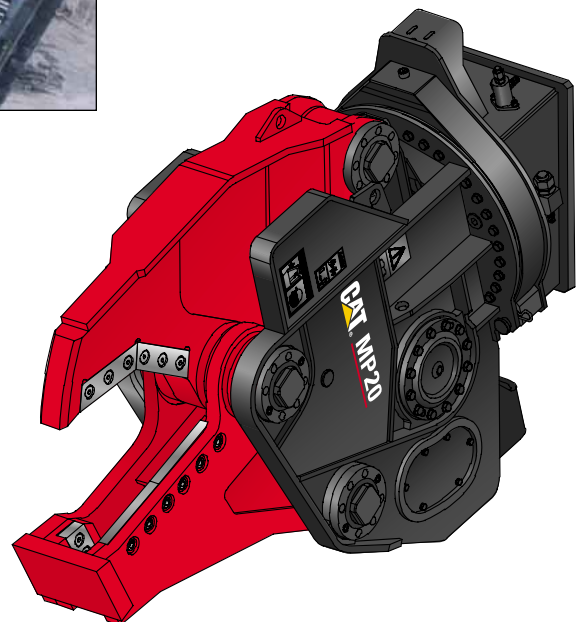
The exact cutting dimensions depend on excavator size, the conditions of the cutters and jaws and the tensile strength of the steel.

## Multi-Processor with Shear Jaws



### Multi-Processor with Shear Jaws (S)

- For demolition of steel structures.
- Cuts angle and channel iron, beams, pipe, rebar, cable and tires.
- Knives are reversible.



# Specifications

All dimensions and weights are approximate.

		<b>MP15</b>	<b>MP20</b>	<b>MP30</b>	<b>MP40</b>
Weight total – housing, jaw and bracket	kg	1800	2600	3600	5800
Weight of the jaw	kg	650	1000	1300	2200
<b>Dimensions</b>					
Length	mm	2100	2250	2700	3400
Height	mm	1310	1510	1680	1980
Width	mm	800	800	1010	1180
Jaw width (fixed)	mm	300	320	370	460
Jaw width (moving)	mm	80	100	120	150
Jaw opening	mm	350	420	470	630
Jaw depth	mm	480	580	710	880
Cutter-length	mm	400	520	600	760
<b>Maximum crushing/shear force</b>					
At tip	kN	900	1200	1600	1900
Primary blade center	kN	2100	2900	3750	4750
At throat	kN	4200	5800	7100	8950
<b>Maximum oil flow</b>					
Hydraulic-cylinder	l/min	150	200	300	400
Cycle time (open, close, open)	sec	5	6	6.5	7.5
Rotation	l/min	40	40	40	80
<b>Maximum working pressure</b>					
Hydraulic-cylinder	kPa	35000	35000	–	–
Rotation	kPa	14000	14000	–	–

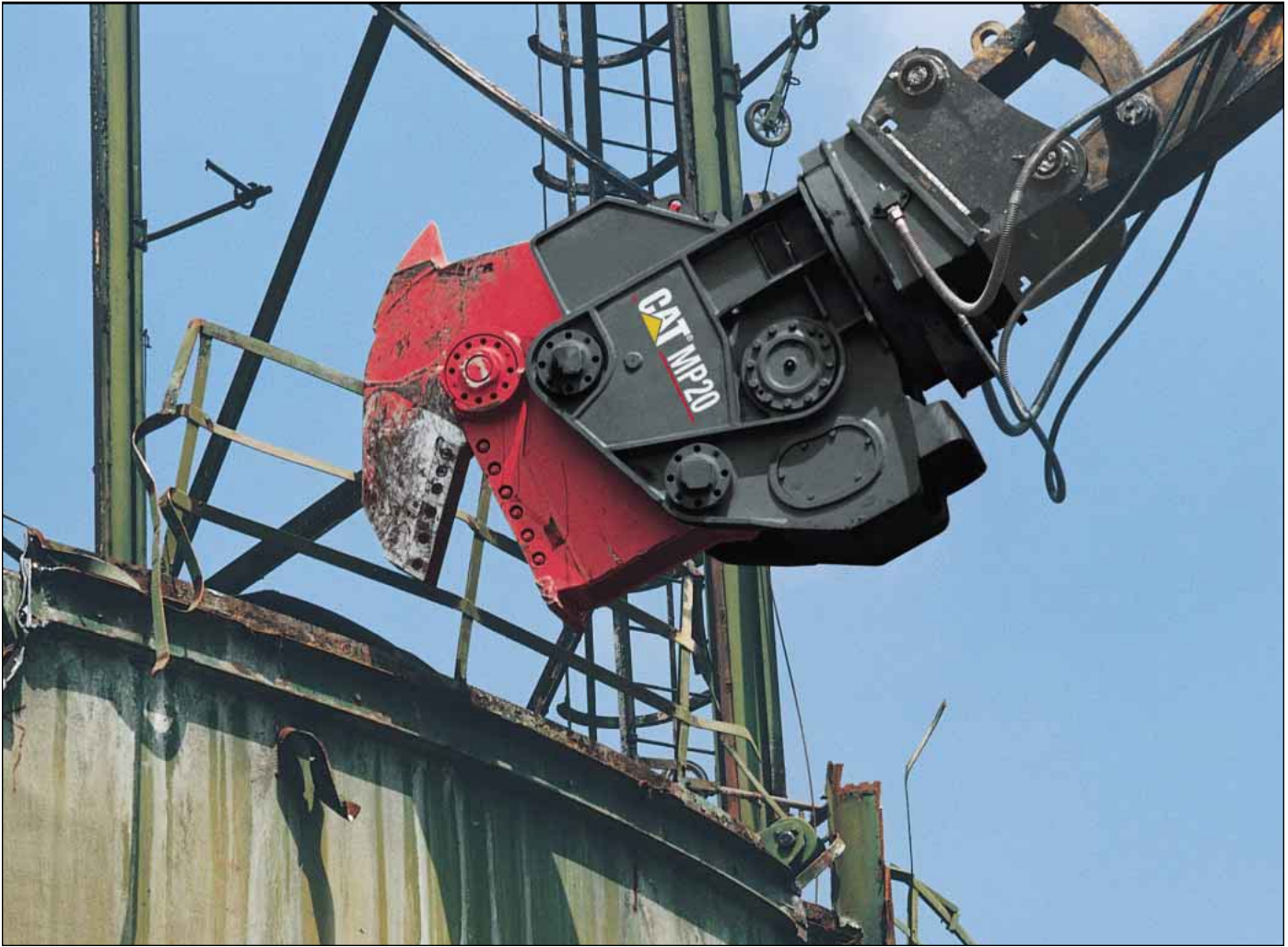
# Cutting Capacity

		<b>MP15</b>	<b>MP20</b>	<b>MP30</b>	<b>MP40</b>
<b>Narrow I-beams</b>					
Height	mm	300	400	500	600
Flange width	mm	150	180	200	600
Flange thickness	mm	10.7	13.5	16.0	19.0
Web thickness	mm	7.1	8.6	10.2	12.0
<b>Wide I-beams</b>					
Height	mm	190	250	310	390
Flange width	mm	200	260	300	300
Flange thickness	mm	10	12.5	15.5	19.0
Web thickness	mm	6.5	7.5	9.0	11.0
Solid-round	mm	65	80	90	100
Solid-square	mm	60	70	80	90

The above profiles provide an indication of the shear's cutting capability.

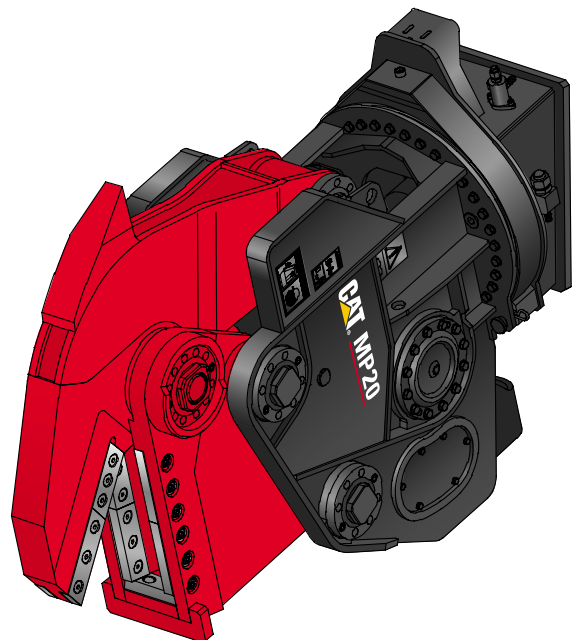
The exact cutting dimensions depend on excavator size, the conditions of the cutters and jaws and the tensile strength of the steel.

## Multi-Processor with Tank Shear Jaws



### Multi-Processor with Tank Shear Jaws (TS)

- Quickly cuts steel plate on barges, railway cars, grain, water, oil, and fuel tanks. Dual knives on the moving and static jaws produce smooth, straight edges.
- All knives are reversible.
- Available for MP20 and MP30 only.





# Specifications

All dimensions and weights are approximate.

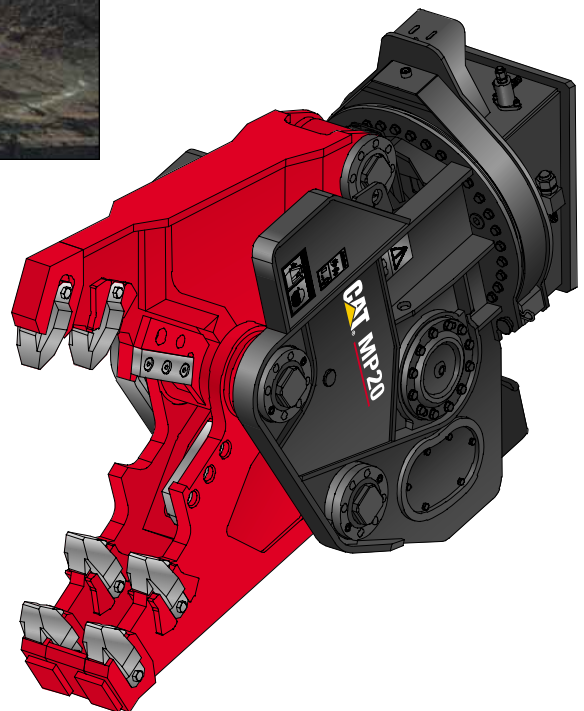
		<b>MP20</b>	<b>MP30</b>
Weight total – housing, jaw and bracket	kg	2600	3700
Weight of the jaw	kg	1000	1400
<b>Dimensions</b>			
Length	mm	2400	2800
Height	mm	1750	2100
Width	mm	800	1180
Jaw width (fixed)	mm	290	340
Jaw width (moving)	mm	120	150
Jaw opening	mm	440	510
Jaw depth	mm	460	580
Cutter-length	mm	460	580
<b>Maximum shear force</b>			
At tip	kN	1400	1900
A jaw center	kN	2200	4000
At throat	kN	4400	6350
Cutting capacity plate steel	mm	25	30
<b>Maximum oil flow</b>			
Hydraulic-cylinder	l/min	200	300
Cycle time (open, close, open)	sec	6	6.5
Rotation	l/min	40	40
<b>Maximum working pressure</b>			
Hydraulic-cylinder	kPa	35000	35000
Rotation	kPa	14000	14000

## Multi-Processor with Crusher Jaws



### Multi-Processor with Crusher Jaws (CR)

- For demolition of moderately reinforced concrete structures. Capable of crushing concrete and cutting rebar.
- Replaceable crusher teeth and reversible knives.



# Specifications

All dimensions and weights are approximate.

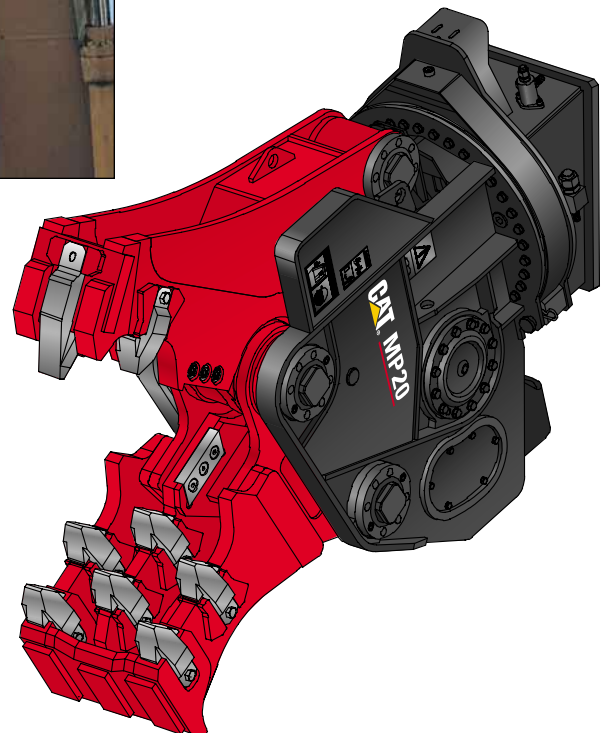
		<b>MP15</b>	<b>MP20</b>	<b>MP30</b>	<b>MP40</b>
<b>Weight total – housing, jaw and bracket</b>					
	kg	1800	2600	3600	5800
<b>Weight of the jaw</b>					
	kg	650	1000	1300	2200
<b>Dimensions</b>					
Length	mm	2200	2350	2770	3500
Height	mm	1510	1750	1980	2380
Width	mm	800	800	1010	1180
Jaw width (fixed)	mm	300	360	380	460
Jaw width (moving)	mm	100	130	130	160
Jaw opening	mm	710	850	1050	1320
Jaw depth	mm	700	770	920	1100
Cutter-length	mm	200	260	260	250
<b>Maximum crushing/shear force</b>					
Tooth-jaw	kN	700	950	1250	1500
At 2nd tooth	kN	950	1350	1750	2200
Primary blade center	kN	2100	2900	3800	4650
<b>Maximum oil flow</b>					
Hydraulic-cylinder	l/min	150	200	300	400
Cycle time (open, close, open)	sec	5	6	6.5	7.5
Rotation	l/min	40	40	40	80
<b>Maximum working pressure</b>					
Hydraulic-cylinder	kPa	35000	35000	35000	55000
Rotation	kPa	14000	14000	14000	14000

## Multi-Processor with Primary Pulverizer Jaws



### Multi-Processor with Primary Pulverizer Jaws (PP)

- Combines capability to demolish and recycle moderately reinforced concrete structures. Pulverizes concrete, cuts rebar and separates rebar from concrete.
- Replaceable crusher teeth and reversible knives.



# Specifications

All dimensions and weights are approximate.

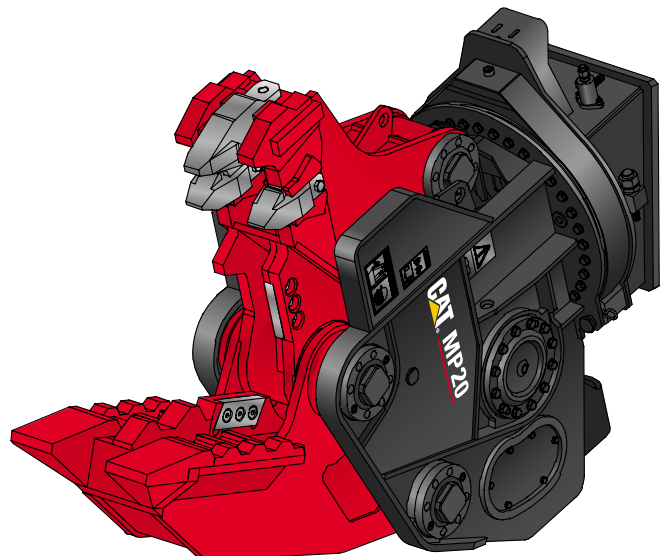
		<b>MP15</b>	<b>MP20</b>	<b>MP30</b>
Weight total – housing, jaw and bracket	kg	1900	2750	3700
Weight of the jaw	kg	750	1150	1400
<b>Dimensions</b>				
Length	mm	2220	2325	2800
Height	mm	1590	1775	1980
Width	mm	800	800	1010
Jaw width (fixed)	mm	480	540	610
Jaw width (moving)	mm	280	340	370
Jaw opening	mm	700	800	960
Jaw depth	mm	700	800	940
Cutter-length	mm	200	200	250
<b>Maximum crushing/shear force</b>				
Tooth-jaw	kN	650	950	1250
At 2nd tooth	kN	900	1300	1550
Primary blade center	kN	2100	2750	3950
<b>Maximum oil flow</b>				
Hydraulic-cylinder	l/min	150	200	300
Cycle time (open, close, open)	sec	5	6	6.5
Rotation	l/min	40	40	40
<b>Maximum working pressure</b>				
Hydraulic-cylinder	kPa	35000	35000	35000
Rotation	kPa	14000	14000	14000

## Multi-Processor with Secondary Pulverizer Jaws



### Multi-Processor with Secondary Pulverizer Jaws (PS)

- Recycles demolished concrete by pulverizing concrete, separating concrete and rebar, and cutting rebar as needed.



# Specifications

All dimensions and weights are approximate.

		MP15	MP20	MP30	MP40
Weight total – housing, jaw and bracket	kg	1850	2650	3650	6000
Weight of the jaw	kg	700	1050	1350	2400
<b>Dimensions</b>					
Length	mm	2250	2450	2950	3650
Height	mm	1650	1900	2200	2550
Width	mm	800	800	1010	1180
Jaw width (fixed)	mm	440	500	580	700
Jaw width (moving)	mm	310	360	420	480
Jaw opening	mm	730	890	1100	1400
Jaw depth	mm	670	800	970	1170
Cutter-length	mm	200	200	200	–
<b>Maximum crushing/shear force</b>					
Tooth-jaw	kN	750	1000	1200	1500
At 2nd tooth	kN	1000	1300	1550	1900
Primary blade center	kN	2200	3000	4800	5500
<b>Maximum oil flow</b>					
Hydraulic-cylinder	l/min	150	200	300	400
Cycle time (open, close, open)	sec	5	6	6.5	7.5
Rotation	l/min	40	40	40	80
<b>Maximum working pressure</b>					
Hydraulic-cylinder	kPa	35000	35000	35000	35000
Rotation	kPa	14000	14000	14000	14000

# Matching Guide

## Stick Mounted / Reach Boom

		Stick Range
<b>P115</b>	318B	2.25 - 3.2 m
	320B	1.9 - 3.9 m
	322B	3.6 m
<b>MP15</b>	320B L	1.9 - 3.9 m
	322B L	2.5 - 3.6 m
<b>MP20</b>	322B L	2.5 - 3.6 m
	325B L	2.7 - 3.2 m
	330B L	2.2 - 3.9 m
<b>MP30</b>	330B L	3.3 m
	345B L-V*	3.4 - 3.9 m
	345B L-F**	3.4 - 4.8 m
<b>MP40</b>	365B L	2.8 - 4.7 m
	375 L	2.9 - 5.5 m
	375 L***	4.4 - 5.5 m

## Boom Mounted

<b>MP20</b>	320B L	Reach Boom
<b>MP30</b>	322B L	Reach Boom
	325B L	Reach Boom
<b>MP40</b>	330B L	Reach Boom

Matching guide for all Multi-Processor and Jaw configurations.  
Tank Shear Jaws are not available for MP15.

\* Variable undercarriage

\*\* Fixed undercarriage

\*\*\* GP Boom

# MP15/MP20/MP30/MP40 Multi-Processor

**Caterpillar recommends falling object guards in applications where there is a possibility of falling objects.  
Please consult your Caterpillar dealer for these guards.**

GEHQ0166-1 (10/2000) ro

Materials and specifications are subject to change without notice.  
Featured machines in photos may include additional equipment.  
See your Caterpillar dealer for available options.

[www.CAT.com](http://www.CAT.com)  
© 2000 Caterpillar

**CATERPILLAR<sup>®</sup>**