

# MLT 840

AGRICULTURAL HANDLING solutions



# A PASSION FOR FARMING



As partners to the farming industry for more than 20 years, we know your business is **demanding**, and on today's modern farm the materials handling plays an important part in the daily farm handling jobs, so you can be sure you'll be able to find within our farming range **THE** Manitou you need.

The MLT 840 rough terrain telehandler is the ideal choice for **performance**. Its impressive capabilities enable you to carry out all your **farm handling** tasks:

animal feed, harvesting work, bulk loading and unloading.

Arable, dairy and livestock farmers, cereal growers, cooperatives and agricultural contractors will appreciate the qualities of this machine. More than just a handling solution, Manitou offers you a product which both looks good and is comfortable to use: inside and outside have been cleverly designed to satisfy you. The MLT 840 benefits from innovations such as: JSM\*, control console, ECS\*\* ...

In short you gain in both **comfort** and **productivity**.

When you choose Manitou, you can count on a fork lift truck for long term durability. You also benefit from the package of services provided by your dealer: after-sales service, servicing and maintenance contracts, on-site repairs and financing solutions.

Why all this? Because, like you, we take pleasure in a **job well done!**



\* Joystick Switch and Move, patent applied for by Manitou BF  
\*\* Easy Connect System: hydraulic decompression of the accessory line

“A real agricultural handling **solution**”



# PERFORMANCE ON YOUR FARM

## 4000 kg:

The MLT 840's maximum capacity allows you to move up to 4 tonnes and - better still - to tip up to 3 tonnes into a 4.5 m high trailer.

## 7.55 m:

The boom of the MLT 840 lets you carry loads up to 7.55 m in height with 80 cm of offset.

## 3.98 m:

A turning radius that makes no compromise: performance means agility!



## You choose

The MLT 840 is available in two different versions:

- **MLT 840-115 PS** equipped with a **115 HP** engine and a **150 l/min** variable flow rate pump
- **MLT 840-137 PS** equipped with a **137 HP** engine and a **180 l/min** variable flow rate pump.

Both versions have a five-speed Powershift gearbox with the **lock-up function**.

You can choose just the power you need. A 150 l/min variable flow rate pump is mounted on the 115 HP model whereas the 137 HP version is equipped with a 180 l/min variable flow rate pump.



## Style and design

Because you appreciate machines that look good, the design of the MLT 840 has been carefully worked on. A carefully profiled engine hood and a style marked by delicate lines and slender shapes... you're hooked straight away.

## Goes anywhere

Agricultural profile tyres, high ground clearance, an impressive tractive effort and a regulated cooling system : you will be able to work efficiently in any situation. The MLT 840 has been developed to help you manage your farm operations.



# YOU FEEL GOOD...



## A new standard in agricultural telehandlers.

As we know you will be spending a lot of your time in your vehicle, we wanted you to enjoy optimum **comfort and technology**.

The interior of the MLT leaves nothing to be desired with its superb bodywork. The refined dashboard, the materials used, the smart finish and the technologies proposed all contribute to the **top-of-the-range feel of the cab**.

The new design of your driving position is a true model of ergonomic prowess. The architecture has been carefully planned to provide a **generous amount of space** and equipment perfectly suited to your needs are available as standard or on option: cloth seat, fully adjustable steering column (height/depth), sun visor, roof screen, electric window, air conditioning, automatic wheel alignment, all help to provide you with a comfortable working environment.

Exclusive to Manitou, **JSM** lets you control all movements with one hand safely and intuitively: raising and lowering the boom, extending and retracting, crowding and tilting, control over the hydraulic line to the attachment, forward/reverse direction of travel or switching the **M-Shift® gearbox** to manual. You always keep one hand on the steering wheel to maintain full control of your MLT.

The new dashboard features a digital information screen displaying the next maintenance period, the gear engaged, travel speed, boom angle, fuel consumption and lots of other information useful to your day-to-day work.





**“...but you have  
to go home  
in the end!”**

**“Adapting  
to your requirements”**





# EACH TO THEIR OWN **STYLE**

Reacting to customer choice is a Manitou principle. That's the reason you **can choose between** 3 levels of finish: **Classic**, **Premium** and **Elite**.

Because all your requirements are important, Manitou provides you with complete peace of mind in all versions of the MLT.



## **CLASSIC**

In the **Classic** version, your comfort is increased by:

- Mechanical cloth seat
- Rear-view mirror
- Radio player
- Radiator auto cleaning system

## **PREMIUM**

You are not just opting for a Manitou, but for **your** Manitou...  
The **Premium** finish is differentiated by a number of practical and innovative items:

- Pneumatic cloth seat
- Rear-view mirror
- CD/MP3 radio
- Air conditioning
- Attachment line decompression system: Easy Connect System
- Radiator auto cleaning system
- Manual accelerator

## **ELITE**

The **Elite** version offers a top specification model:

- Low-frequency pneumatic cloth seat
- Rear-view mirror
- Bluetooth radio
- Air conditioning
- Boom suspension
- Attachment line decompression system: Easy Connect System
- Radiator auto cleaning system
- Semi-automatic wheel realignment
- Manual accelerator
- Adjustable, continuous hydraulic attachment line
- Xenon worklight

# COMBINE POWER AND PERFORMANCE

## DESIGNED TO OPTIMISE POWER AND FUEL EFFICIENCY

Each telehandler must have a **suitable power unit** to give you the best engine/machine torque: too little power and you lose efficiency, too much power could increase consumption to no effect.

To transform minimum fuel into maximum efficiency, your MLT 840 is fitted with a **John Deere 4.5 l** four-cylinder engine complying with Interim Tier 4/Stage IIIB standards and developing **115 or 137 HP**. These engines are equipped with an Exhaust Gas Recirculation (EGR) valve combined with a Diesel Particulate Filter (DPF).

The cooling system has been designed to offer **efficiency** and **economy**. Featuring an **electronic regulating device**, the cooling system controls the fan speed automatically according to engine temperature, leading to significant fuel savings. Equipped as standard with an **automatic air flow inverter**, your telehandler can “breathe” perfectly in all situations to provide excellent working conditions regardless of engine speed.

“**Optimising**  
the power of  
your **engine**”



## M-SHIFT® GEARBOX: SIMPLICITY AND EFFICIENCY

The new five-speed **M-Shift® gearbox** is designed for smooth gear changing in all situations. Two modes of operation are available: **automatic and manual**.

### In automatic mode:

You shift from one gear to another with minimum torque interruption. The gearshift program adapts to the torque and speed demanded by the job at hand, and **determines the optimum gear automatically**. This lets you engage a low gear, for example, when you are towing a trailer on hilly roads to recover torque and speed.

You choose the top gear in which you wish to travel: **D, 4, 3** or **2**. In **D**, your MLT 840 will derive the full benefit of the five gears available to offer you optimum performance.

### M-SHIFT® control cluster

- 1 Gear selector
- 2 Hydraulic line A control
- 3 Hydraulic line B control



When making heaps of silage or picking up cereals, you may decide to go no higher than third gear. In this case, you select **3** and your MLT 840 will take care of the gear changes, quickly and smoothly, but will never engage a gear higher than third.

### In manual mode:

**You decide** which gear you wish to engage using the **+** and **=** buttons on the JSM.

### Lock-up :

The MLT 840 is fitted as standard with a torque converter lock-up function which drives the transmission system directly over **23 km/h in fourth gear** and **38 km/h in fifth**. This system **improves the efficiency** of your MLT 840, increases its tractive effort and reduces fuel consumption.

## 115 or 137 HP:

The 115 and 137 available horsepower offers moderate fuel consumption on an everyday basis for maximum performance.

## Five-speed Powershift:

Designed for performance and economy, the new M-Shift® automatic gearbox fitted as standard on the MLT 840 also offers you flexibility and comfort.



**“Work quickly  
and effectively”**

# YOU WILL HAVE TIME TO SPARE

**Save yourself time** to concentrate on what matters - that's Manitou's philosophy when it comes to handling: fast working cycles and driver comfort are good examples.

**For maximum efficiency**, Manitou offers you a machine which is simple to use. **Quick and easy to learn** (JSM, controls perfectly placed), your machine is the solution to all your farm handling duties.

**Manoeuvrability is essential!** You will be able to do even more work: the more time you spend at the wheel of your Manitou the more your efficiency will be increased.

With the **LSU** (Load Sensing Ultra) system using variable-displacement pumps up to **180 l/min**, movements can be cumulated for improved working efficiency. You can modulate the hydraulic speed of your boom head attachment in both directions by means of two flow regulators. Once you have set up the system to suit, you can for example **open** a bale clamp **quickly** and **close** it **slowly**, without even thinking about it! Very practical when handling bales of haylage!

A wide range of **attachments** are available, ideally suited to your Manitou to increase **utilisation and versatility**. Whatever the job, Manitou can provide a solution to maximise your farm handling requirements with complete safety. Collector brush, bale clamp, multifunction grab bucket, boom, silo unloader bucket. Manitou supports you in all your applications.



## Loading comparison data



Work cycle using a tractor with a loader arm



Work cycle using an MLT 840-115 PS



Work cycle using an MLT 840-137 PS



Sources: Manitou data

### 150 or 180 l/min:

The piston pump of your MLT 840, combined with the JSM, delivers a maximum flow rate of 150 or 180 l/min for quick and accurate movements.

### 4 x 4 x 4:

4 wheel drive and 4 wheel steer = manoeuvrability for getting out of all situations.

# YOU ARE SAFE

## SORRY, WE DON'T DESIGN TOYS

Our **design department**, employing more than 200 engineers and technicians, have specialised in the design of agricultural telehandlers **for more than 20 years**. With more than 50 registered patents, our knowledge and expertise with regard to the structure of the machine offers you reliability and durability. A fully comprehensive testing procedure and "best practice" methods are applied to ensure quality manufacturing at all levels, utilising all the latest modern technology.

Specialists in agriculture, Manitou develop their product range with the customer in mind, selecting components to suit the most arduous farm handling needs, **your machine like the Manitou company is 100% dedicated to agriculture**: the tyres, transmission and even the cooling system have been logically chosen and assembled.



**“The assurance  
of working  
in total safety”**

“A machine **100%** dedicated to **agricultural use**”



## YOU ARE PROTECTED

Your working environment must above all be a safe area.

The excellent **stability** of the MLT 840 combined with the aggravating movement arrestor allows you to handle maximum loads up to **4 tonnes** with complete confidence.

Your **safety** is further reinforced by the **presence detector** located in the seat. Travel movements are only allowed when you are sitting in the driving seat.

The cab has been especially designed to **protect** you. Satisfying **ROPS/FOPS\*** requirements, withstanding rolling over, heavy objects falling and therefore prevents distortion to the cab.

A large window area, **lateral engine**, low boom pivot as well as the high seating position gives you **360° visibility** guaranteeing both your own safety and that of everyone around you.

\* ROPS: rollover protection structure  
FOPS: falling objects protection structure



# SEE FURTHER

## OFFERING YOU **MADE-TO-MEASURE SERVICES**

### **The close proximity of a network of experts at your service.**

Your local Manitou dealer is dedicated to providing a first class after sales back up. The know-how, experience and commitment of Manitou, at more than 500 dealers throughout the world, ensure you will have professional support on a daily basis.

**Maintenance and after-sales service:** so that your telehandler is operational all year round, your dealer can offer you maintenance contracts. You will reduce your usage costs and have the guarantee of your equipment being regularly monitored. Manitou is committed to maintaining your productivity on a daily basis.

**Leasing and finance agreements:** your Manitou dealer is your best partner. For financial solutions, we help provide you with specific finance and modular packages to support you as your business develops.

- **COMFORT SERVICE:** a maintenance contract comprising consumables, labour and travel for maximum peace of mind.
- **MANIPLUS:** a contract which extends the manufacturer's guarantee by 24 to 36 months.







“**Accompanying  
the changes in  
your business**”

## **REDUCE YOUR ECOLOGICAL FOOTPRINT**

From the design stage of your machine, Manitou does everything to **respect the environment**.

Our Ancenis production site, certified **ISO 14001\***, guarantees that environmental standards are included from the design stage of the product up to the delivery of the machine to your business. Daily routine procedures include the selection of the least polluting components, selective sorting, treatment of special wastes and quite simply daily vigilance (energy, paper shavings).

The optimum management of the engine speed according to the power demanded **minimises your consumption** and your polluting emissions, thus reducing the impact of the use of your MLT on the environment.

\* ISO 14001: international environmental management standard which lays down requirements relating to the implementation of an environment management system.

# YOU CHOOSE

Standard and optional equipment	CLASSIC	PREMIUM	ELITE
Fork carriage	●	●	●
Rear-view mirror + Internal view mirror	●	●	●
Radiator auto cleaning system	●	●	●
Radio player	●	-	-
CD/MP3 radio	○	●	-
Bluetooth radio	○	○	●
Mechanical cloth seat	●	-	-
Pneumatic cloth seat	○	●	-
Low-frequency pneumatic cloth seat	○	○	●
Air conditioning	○	●	●
Attachment line decompression system: ECS	○	●	●
Manual accelerator	○	●	●
Boom suspension	○	○	●
Xenon worklight	○	○	●
Semi-automatic wheel realignment	○	○	●
Adjustable, continuous hydraulic attachment line	○	○	●
Hydraulic locking (accessories)	○	○	○
Boom-mounted light	○	○	○

● Standard   ○ Option   - Not available

## A selection of attachments available:

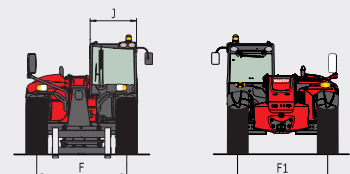
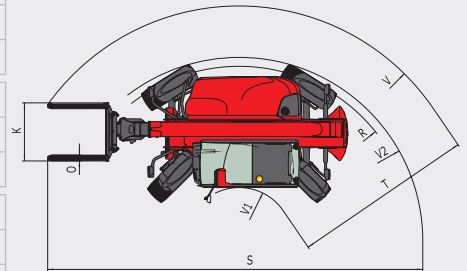
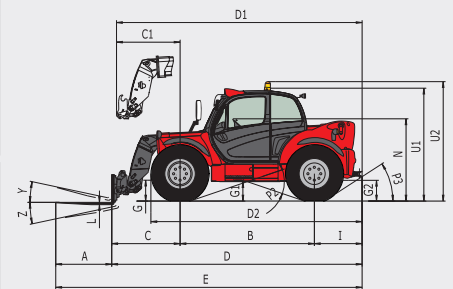
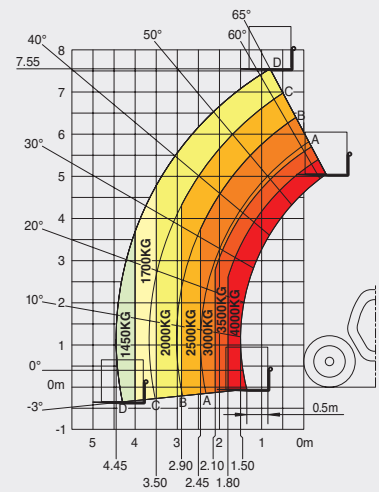
		
<b>Multifunction grab bucket</b>	<b>Grain bucket</b>	<b>Collector brush</b>
		
<b>Silo unloader-distributor bucket</b>	<b>HP self washer</b>	

# MLT 840

	MLT 840-115 PS	MLT 840-137 PS
<b>Lifting capacity</b> at 500 mm from fork heels	4000 kg	
Break-out force	5222 daN	
<b>Lifting height</b>	7.55 m	
<b>Time: laden/unladen (in sec)</b>		
Lifting	6.80/8.70	6.60/8.40
Lowering	5.00/5.20	4.80/4.90
Extension	6.50/6.50	6.30/6.30
Retraction	5.40/5.40	5.20/5.20
Crowd	3.20	3.00
Dump	2.50	2.40
<b>Tyres</b>	460/70 R24	
<b>Forks (mm)</b>		
Length x width x thickness	1200 x 125 x 50	
Carriage rotation	148°	
<b>Braking</b>	multiple-disk brake with oil bath on front and rear axles	
<b>JOHN DEERE STAGE III B engine</b>	4045 PWX	
Cubic capacity	4 cyl./4500 cm <sup>3</sup>	
Power at 2000 rpm (ISO/TR 14396)	115 HP/86 kW	137 HP/102 kW
Max. torque at 1500 rpm (ISO/TR 14396)	480 Nm	515 Nm
Injection	direct	
Cooling	water	
<b>Transmission</b>	torque converter	
Gearbox	Powershift M-Shift® with Lock-up	
Number of gears (forward/reverse)	5/3	
Max. travel speed	40 kph*	
<b>Hydraulics</b>	150 l/min - 290 bar	180 l/min - 290 bar
Piston pump	electronically controlled variable cubic capacity	
Control valve	DDIC	
<b>Capacities</b>		
Hydraulic oil	175 l	
Fuel	143 l	
<b>Unladen weight (with forks)</b>	8401 kg	
<b>Width overall</b>	2.39 m	
<b>Height overall</b>	2.40 m	
<b>Length overall</b>	5.37 m	
<b>Turning radius (outer wheels)</b>	3.98 m	
<b>Ground clearance</b>	0.41 m	
<b>Drawbar pull</b>	9100 daN	9400 daN
<b>Noise at driving position (LpA)</b>	80 dB	
<b>Environmental noise (LwA)</b>	105 dB	
<b>Vibration to whole hand/arm</b>	< 2.5 m/s <sup>2</sup>	

## Maximum height reach: 0.75 m

As per standard EN 1459 annex B



mm		D2	I	P3	V1
A	1200	4487	1022	33°	1147.5
B	2880	E	J	R	V2
C	1465	F	K	S	3980
C1	1362	F1	L	T	W
D	5367	G	N	U1	2392
D1	5264	G1	O	U2	Y
		G2	P2	V	Z
					136°

This brochure describes versions and configuration options for Manitou products which may be fitted with different equipment. The equipment described in this brochure may be standard, optional or not available depending on version. Manitou reserves the right to change the specifications shown and described at any time and without prior warning. The manufacturer is not liable for the specifications given. For more information, contact your Manitou dealer. Non-contractual document. Product descriptions may differ from actual products. List of specifications is not comprehensive. The logos and visual identity of the company are the property of Manitou and may not be used without authorisation. All rights reserved. The photos and diagrams contained in this brochure are provided for information only.

MANITOU BF SA - Limited company with board of directors - Share capital: 39,547,824 euros - 857 802 508 RCS Nantes



Your nearest **MANITOU** dealer:



Head office:  
B.P. 249 - 430 rue de l'Aubinière - 44158 Ancenis Cedex - France  
Tel: 00 33 (0)2 40 09 10 11 - Fax: 00 33 (0)2 40 09 10 97  
[www.manitou.com](http://www.manitou.com)