



MHL 350 HD

TRAILER PULLER




DESIGNED FOR TRAILER PULLING

The MHL350 F HD is specially designed for trailer pulling, has all-wheel drive, huge towing capacity and is used for a wide range of applications in timber handling. Logs are loaded, unloaded and transported with a trailer over the entire area.

The MHL350 F HD is equipped with a powerful 160 kW diesel engine and a robust HD undercarriage with single tires and dual-circuit braking system.

 160 kW

 33.8-37.5 t
(without attachments)

 Max. 16 m

TECHNICAL DATA

OPERATING WEIGHT WITHOUT ATTACHMENT

MHL350 F HD	33.8–37.5 t
--------------------	-------------

DIESEL ENGINE

	EU Stage V / U.S. Tier 4	EU Stage IIIA / U.S. Tier 3 *
Manufacturer & model	Deutz TCD 6.1 L6	Deutz TCD2013 L6
Design	6-cylinder in-line	6-cylinder in-line engine
Functionality	4-stroke engine, direct common-rail fuel injection, turbocharger with charge air intercooling, controlled exhaust as recirculation, diesel particle filter with a continuously regenerating system and SCR catalytic converter	4-stroke engine, direct common-rail fuel injection, turbocharger with charge air intercooling
Power	160 kW	148 kW
Rated speed	2,000 min ⁻¹	2,000 min ⁻¹
Displacement	6.1 l	7.2 l
Cooling system	Water and charge air cooling with temperature controlled fan speed	
Exhaust emission standard	EU Stage V / US EPA Tier 4	EU Stage IIIA / U.S. Tier 3 *
Fuel tank	315 l Diesel	315 l diesel
DEF/ Urea tank	32 l AdBlue	-

ELECTRICAL SYSTEM

Alternator	28 V / 100 A
Voltage	24 V
Battery	2 × 12 V / 110 Ah / 750 A (in accordance with EN)
Lighting system	2 × LED floodlights at the front of the machine, rear parking lights and indicator lights

HYDRAULIC SYSTEM

Load limit control for energy-efficient operation

Max. pump flow	2 × 330 l/min
Max. pressure	320 / 360 bar
Hydraulic oil tank	366 l
Temperature-dependent fan drive	

TRANSMISSION

Travel drive all wheel, hydrostatic drive with infinitely variable axial piston motor and directly mounted travel brake valves, 2-stage power shift system

Travel speed	0-19 km/h
Gradeability	max. 46%
Turning radius	9.5 m

SLEWING GEAR

Slewing ring	Internally geared double row slewing ring bearing, greasing via automatic lubrication system
Drive	2-stage planetary gear with integrated multi-disc brake
Uppercarriage swing speed	0–7 min ⁻¹ infinitely variable
Slewing lock	Electrically activated

UNDERCARRIAGE

Front axle	Steering axle with planetary drive, integrated wet multi-disc brake and oscillating lock
Rear axle	Planetary drive axle with integrated wet multi-disc brake, rigidly mounted
Stabilization	with 4-point stabilizers
Tires	Pneumatic tires Hauler 16.00-25/32 PR, 4-fold. Further tires available on request.

BRAKES

Service brake	Hydraulically activated dual-circuit brake system acting on all four wheel pairs, lockable
Parking brake	Electro-hydraulically actuated spring-loaded disk brake on the front axle, works on both axles

OPERATOR'S CAB

Cab Infinitely variable hydraulic height-adjustable cabin with sliding door. Reinforced steel structure, soundproofed, heat-insulated panoramic windows for best all-round visibility, front window with roller blind, glass panel in the cabin roof with sliding blind. Heating and air conditioning, separate heat exchangers, fresh and recirculated air filters. Multifunction touch display, bottle holder, paper clip and multiple storage and mounting options. Digital radio (DAB+, USB, Bluetooth and hands-free), USB charging station 5V. Vertically adjustable cabin: viewing height of 5.96 m

Air-conditioning Automatic air-conditioning. Infinitely variable heating with 8-speed fan, 10 adjustable air nozzles, 3 defroster nozzles

Operator's seat Air-cushioned comfort seat with swinging armrests / joysticks, safety belt, lumbar support and headrest. Enables fatigue-free work due to universal adjustment options for the seat position, seat inclination and the arrangement of the seat cushion in relation to the armrests and joysticks

Monitoring Ergonomically arranged, glare-free Multifunction display. Automatic monitoring and storage of deviating operating states (e.g. all hydraulic oil filters, hydraulic oil temperature – coolant and charge air temperature – diesel particulate filter loading, steering), visual and audible warning. Diagnostic option for the individual sensors via the multifunction display. Rear view and side view camera on the right with separate monitor.

	EU Stage V / U.S. Tier 4	EU Stage IIIA / U.S. Tier 3 *
Sound levels	Sound power level (outdoor area) L _{WA} 98.8 dB(A) (measured) as per directive 2000/14/EC	Sound power level (outdoor area) L _{WA} 101.3 dB(A) (measured) as per directive 2000/14/EC
	L _{WA} 101 dB(A) (guaranteed) as per directive 2000/14/EC	L _{WA} 102 dB(A) (guaranteed) as per directive 2000/14/EC
	Sound pressure level (inside the cab) as per the standard ISO 6396 L _{PA} 67 dB(A)	Sound pressure level (inside the cab) as per the standard ISO 6396 L _{PA} 67 dB(A)

Vibrations Weighted r.m.s. value of acceleration of upper limbs under 2.5 m/s² (98 in/s²)

Weighted effective value of acceleration for the seat and feet under 0.5 m/s² (20 in/s²)

Certification as per CE directives

	Standard	Option
ENGINE		
Charge air cooling	•	
Direct electronic fuel injection/common rail	•	
Advanced automatic idle incl. engine shut-off function	•	
ECO / Power Mode	•	
Engine preheating		•
Engine diagnostics interface	•	
Temperature-dependent fan drive	•	

UNDERCARRIAGE

All-wheel drive	•
Wet multi-disc brake for all 4 wheels	•
Front axle oscillating lock	•
2-speed powershift transmission	•
4-point stabilizers	•
Individually controllable 4-point stabilizers	•
Tool box	•
Special paint (customer paint work)	•

UPPERCARRIAGE

Separated cooling system for engine and hydraulic oil	•
Temperature-dependent fan drive	•
Fan drive reversing function	•
Automatic central lubrication system	•
Rear view camera	•
Side view camera	•
Travel alarm	•
Electric refuelling pump	•
Lighting protection	•
Special paint (customer paint work)	•

	Standard	Option
CAB		
Safety glass, tinted windows (side, rear), sliding window clear glass	•	
Cabin with all clear glass windows		•
Cabin with penetration resistant glass front & top & right side window (classification P5A)		•
Cabin with bullet-proof glass (protection class P8B)		•
Sliding window in cab door	•	
Glass ceiling	•	
Windshield washer system	•	
Washing device for roof window		•
Air-cushioned operator seat with headrest, seatbelt, and lumbar support, consoles that move with the seat	•	
Seat heating		•
Joystick steering	•	

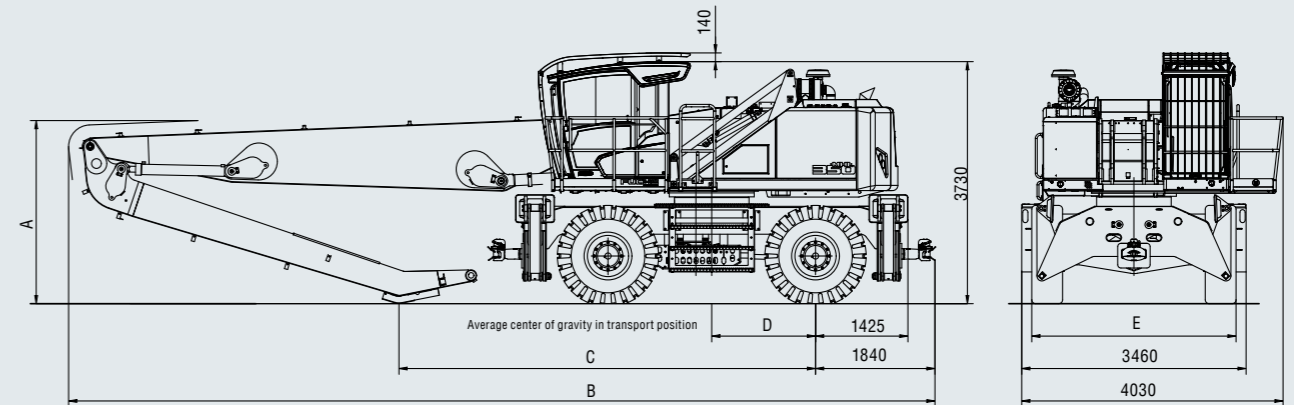
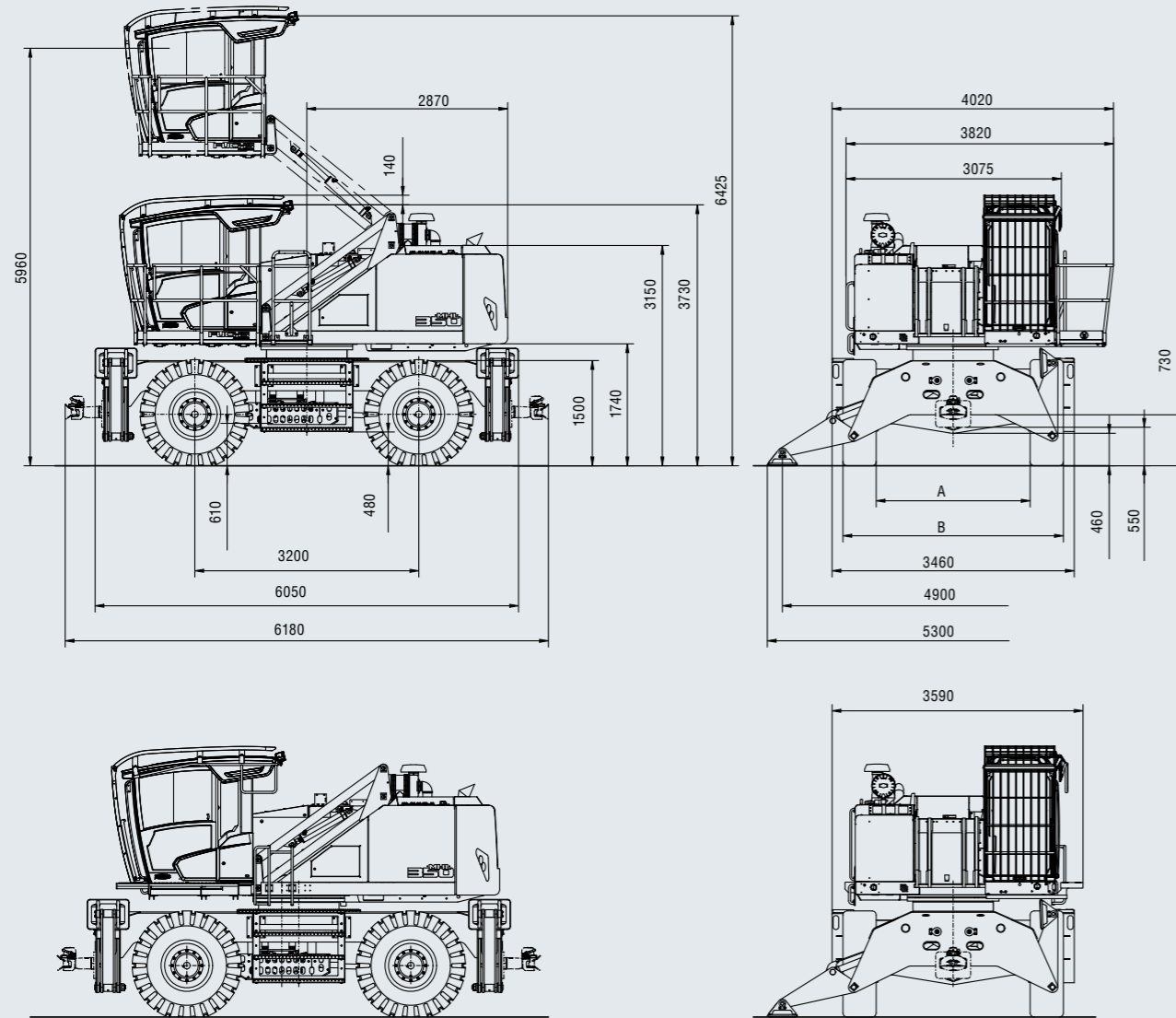
	Standard	Option
CAB		
Steering column, height and tilt adjustable		•
Automatic air conditioning system	•	
Auxiliary heating incl. Timer		•
7" Multi-function display	•	
Document net	•	
Front and top guard for the cab (FOPS)		•
Voltage converter 12 V		•
Digital Radio (DAB+, USB, Bluetooth and hands-free system)	•	
12V socket/cigarette lighter	•	
Catwalk for cabin, access ladder included		•
Fire extinguisher, dry powder		•

EQUIPMENT

Loading equipment 15 m	•
Close proximity range limiter for dipperstick	•
Coolant and hydraulic oil level monitoring system	•
Filter system for attachments	•
Hose rupture valve for boom cylinder	•
Hose rupture valve for stick cylinder	•
Overload warning device	•
Quick coupling on dipperstick	•
Stick protection	•
Active cyclone prefilter (TOP AIR)	•
Boom cylinder damping system (piston accumulator)	•
Hydraulic oil preheating	•
Lubrication of the grab suspension by central lubrication system	•
Float switch	•
Light packages LED	•
LED front headlights	•
Trailer hitch	•
Fuchs Telematics System, incl. 5 years contract	•

DIMENSIONS | MHL350 HD

All dimensions in mm

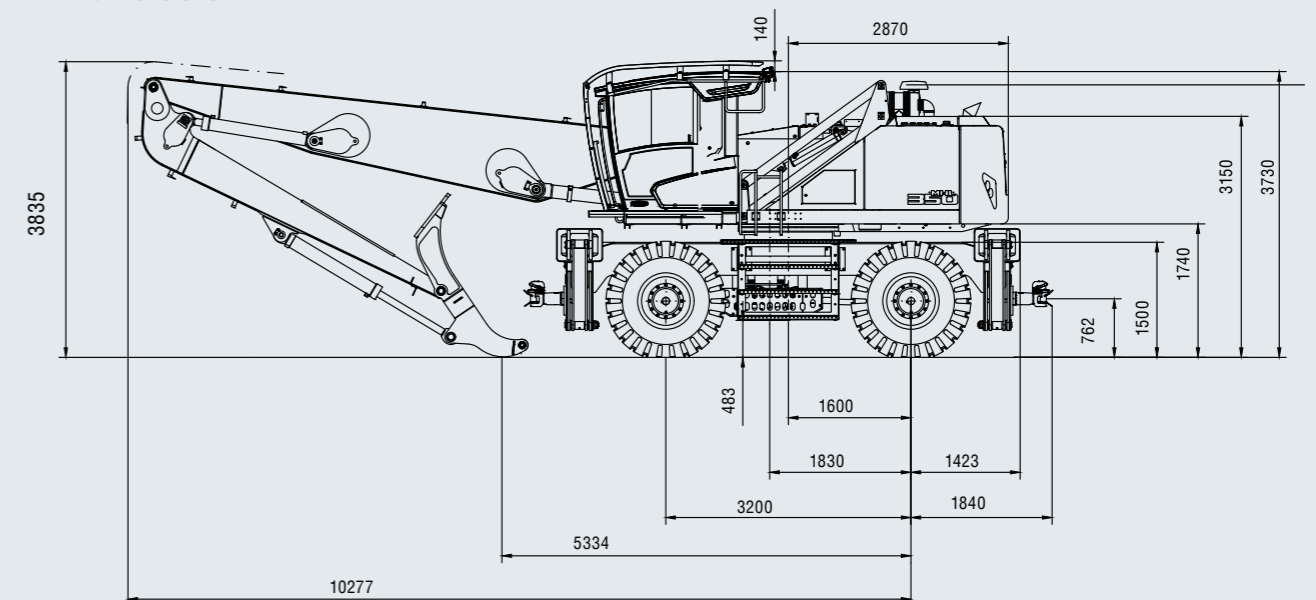


DIMENSIONS	REACH 16	REACH 15	REACH 14
A	3400	3400	3390
B	12940	12940	12145
C	5970	6580	5890
D	1850	1470	1600

TIRES	GOODYEAR	SOLIDEAL (HAULER)
E	3250	3150

DIMENSIONS | MHL350 HD LIVE HEEL 12.6 M

All dimensions in mm



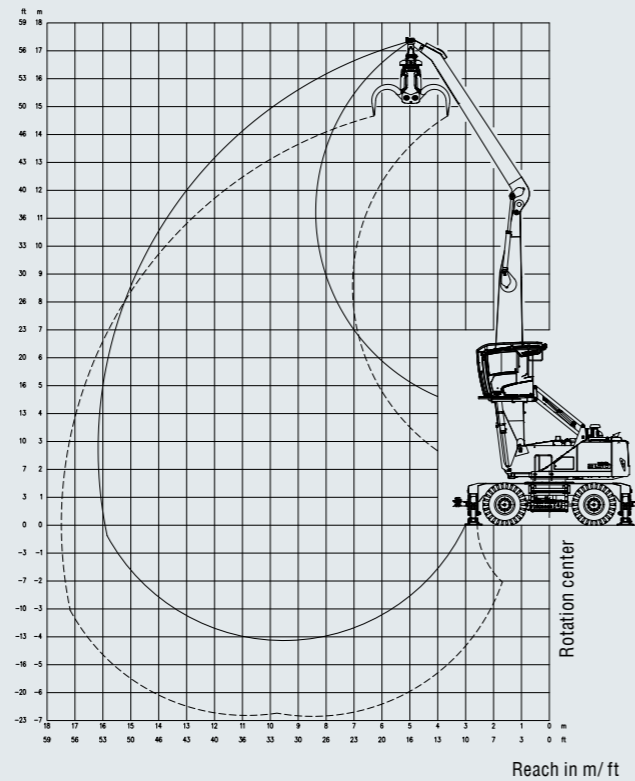
TIRES	GOODYEAR	SOLIDEAL (HAULER)
A	2010	2260
B	3250	3150

WORKING RANGE | MHL350 HD

REACH 16 M WITH DIPPER STICK

Loading equipment	Box-type boom 8.5 m Dipper stick 7.2 m Timber grapple
--------------------------	---

Grab size	Recommended attachments upon request
------------------	--------------------------------------



The lift capacity values are stated in metric tons (t). The pump pressure is 360 bar. In accordance with ISO 10567 the lift capacity values represents 75% of the static tipping loads or 87% of the hydraulic lifting force (marked °). On solid and level ground the values apply to a swing range of 360°. The (...) values apply in the longitudinal direction of the undercarriage. The values for "not supported" only apply via the steering axle or the locked oscillating axle. The weights of the attached load hoisting equipment (grab, load hooks, etc.) must be deducted from the lift capacity values. The working load of the lifting device must be observed. In accordance with EU Standard EN 474-5 for object handling applications hose rupture valves on the boom and stick cylinders, an overload warning device and the lift capacity table in the cab are required. For object handling application the machine has to be supported on a level ground.

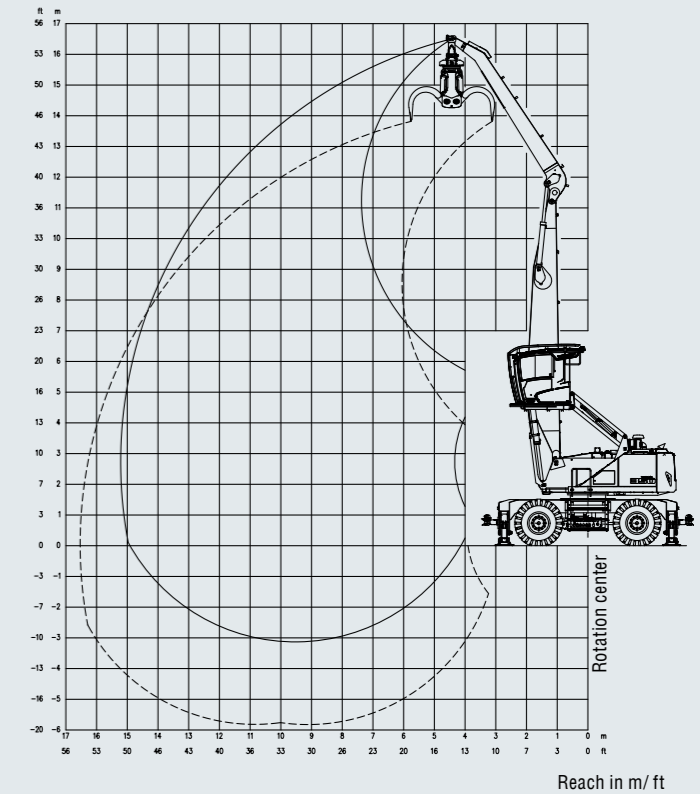
LIFTING CAPACITY

Height [m]	Undercarriage outrigger	Reach [m]							
		4.5	6	7.5	9	10.5	12	13.5	15
15	not supported			(4,8°)	(3,7°)				
	4-point supported			4,8° (4,8°)	3,7° (3,7°)				
13.5	not supported			(4,8°)	(3,7°)				
	4-point supported			4,8° (4,8°)	3,7° (3,7°)				
12	not supported			(5,5°)	(4,7°)	(3,5°)			
	4-point supported			5,5° (5,5°)	4,7° (4,7°)	3,5° (3,5°)			
10.5	not supported			(6,0°)	(4,9)	(3,8)	(2,8°)		
	4-point supported			6,0° (6,0°)	5,4° (5,4°)	4,5° (4,5°)	2,8° (2,8°)		
9	not supported			(6,2°)	(4,8)	(3,8)	(3,0)		
	4-point supported			6,2° (6,2°)	5,6° (5,6°)	5,1° (5,1°)	3,9° (3,9°)		
7.5	not supported			(7,4°)	(6,1)	(4,7)	(3,0)	(2,4)	
	4-point supported			7,4° (7,4°)	6,5° (6,5°)	5,7° (5,7°)	5,1° (5,1°)	4,6° (4,6°)	2,7° (2,7°)
6	not supported			(7,9°)	(5,8)	(4,5)	(3,6)	(2,9)	(2,4)
	4-point supported			7,9° (7,9°)	6,8° (6,8°)	5,9° (5,9°)	5,2° (5,2°)	4,6° (4,6°)	3,4° (3,4°)
4.5	not supported	(11,9°)	(10,5)	(7,3)	(5,5)	(4,3)	(2,8)	(2,3)	
	4-point supported	11,9° (11,9°)	10,8° (10,8°)	8,6° (8,6°)	7,1° (7,1°)	6,1° (6,1°)	5,3° (5,3°)	4,7° (4,7°)	4,0° (4,0°)
3	not supported	(14,6)	(9,4)	(6,8)	(5,2)	(4,1)	(2,7)	(2,3)	
	4-point supported	17,3° (17,3°)	11,9° (11,9°)	9,1° (9,1°)	7,4° (7,4°)	6,3° (6,3°)	5,4° (5,4°)	4,7° (4,7°)	4,0° (4,0°)
1.5	not supported	(4,7°)	(8,5)	(6,3)	(4,8)	(3,9)	(3,2)	(2,6)	(2,2)
	4-point supported	4,7° (4,7°)	12,6° (12,6°)	9,5° (9,5°)	7,6° (7,6°)	6,3° (6,3°)	5,4° (5,4°)	4,6° (4,6°)	3,9° (3,9°)
0	not supported	(3,7°)	(7,9)	(5,9)	(4,6)	(3,7)	(3,1)	(2,6)	(2,2)
	4-point supported	3,7° (3,7°)	8,5° (8,5°)	9,5° (9,5°)	7,6° (7,6°)	6,2° (6,2°)	5,2° (5,2°)	4,4° (4,4°)	3,6° (3,6°)
-1.5	not supported	(3,9°)	(7,0°)	(5,6)	(4,4)	(3,6)	(3,0)	(2,5)	(2,2)
	4-point supported	3,9° (3,9°)	7,0° (7,0°)	9,0° (9,0°)	7,2° (7,2°)	6,0° (6,0°)	5,0° (5,0°)	4,1° (4,1°)	3,1° (3,1°)
-3	not supported		(6,8°)	(5,5)	(4,3)	(3,5)	(2,9)		
	4-point supported		6,8° (6,8°)	8,1° (8,1°)	6,6° (6,6°)	5,4° (5,4°)	4,4° (4,4°)		
Max. Reach 16.1 m									
2.7	not supported								(1,9°)
	4-point supported								1,9° (1,9°)

REACH 15 M WITH DIPPER STICK

Loading equipment	Box-type boom 8.5 m Dipper stick 6.2 m Timber grapple
--------------------------	---

Grab size	Recommended attachments upon request
------------------	--------------------------------------



The lift capacity values are stated in metric tons (t). The pump pressure is 360 bar. In accordance with ISO 10567 the lift capacity values represents 75% of the static tipping loads or 87% of the hydraulic lifting force (marked °). On solid and level ground the values apply to a swing range of 360°. The (...) values apply in the longitudinal direction of the undercarriage. The values for "not supported" only apply via the steering axle or the locked oscillating axle. The weights of the attached load hoisting equipment (grab, load hooks, etc.) must be deducted from the lift capacity values. The working load of the lifting device must be observed. In accordance with EU Standard EN 474-5 for object handling applications hose rupture valves on the boom and stick cylinders, an overload warning device and the lift capacity table in the cab are required. For object handling application the machine has to be supported on a level ground.

LIFTING CAPACITY

Height [m]	Undercarriage outrigger	Reach [m]							
		4.5	6	7.5	9	10.5	12	13.5	15
15	not supported			(4,3°)					
	4-point supported			4,3° (4,3°)					
13.5	not supported			(5,9°)	(4,7°)				
	4-point supported			5,9° (5,9°)	4,7° (4,7°)				
12	not supported			(6,7°)	(5,9°)	(4,6°)			
	4-point supported			6,7° (6,7°)	5,9° (5,9°)	4,6° (4,6°)			
10.5	not supported			(7,4°)	(6,6)	(5,1)	(4,0)		
	4-point supported			7,4° (7,4°)	6,6° (6,6°)	5,8° (5,8°)	4,1° (4,1°)		
9	not supported			(7,7°)	(6,5)	(5,0)	(4,0)	(3,0)	
	4-point supported			7,7° (7,7°)	6,7° (6,7°)	6,0° (6,0°)	5,4° (5,4°)	3,0° (3,0°)	
7.5	not supported			(8,1°)	(6,3)	(4,9)	(3,9)	(3,2)	
	4-point supported			8,1° (8,1°)	6,9° (6,9°)	6,1° (6,1°)	5,4° (5,4°)	4,3° (4,3°)	
6	not supported		(10,7°)	(8,1)	(6,1)	(4,8)	(3,9)	(3,2)	
	4-point supported		10,7° (10,7°)	8,6° (8,6°)	7,2° (7,2°)	6,2° (6,2°)	5,5° (5,5°)	4,8° (4,8°)	
4.5	not supported	(16,6)	(10,6)	(7,6)	(5,8)	(4,6)	(3,7)	(3,1)	(2,6)
	4-point supported	16,8° (16,8°)	11,8° (11,8°)	9,2° (9,2°)	7,5° (7,5°)	6,4° (6,4°)	5,5° (5,5°)	4,8° (4,8°)	2,7° (2,7°)
3	not supported	(5,0°)	(9,6)	(7,1)	(5,5)	(4,4)	(3,6)	(3,0)	(2,6)
	4-point supported	5,0° (5,0°)	12,6° (12,6°)	9,6° (9,6°)	7,7° (7,7°)	6,5° (6,5°)	5,5° (5,5°)	4,7° (4,7°)	3,2° (3,2°)
1.5	not supported	(3,1°)	(8,9)	(6,7)	(5,2)	(4,2)	(3,5)	(2,9)	(2,5)
	4-point supported	3,1° (3,1°)	9,2° (9,2°)	9,7° (9,7°)	7,8° (7,8°)	6,4° (6,4°)	5,4° (5,4°)	4,6° (4,6°)	3,1° (3,1°)
0	not supported	(3,3°)	(6,8°)	(6,4)	(5,0)	(4,1)	(3,4)	(2,9)	
	4-point supported	3,3° (3,3°)	6,8° (6,8°)	9,4° (9,4°)	7,6° (7,6°)	6,2° (6,2°)	5,2° (5,2°)	4,3° (4,3°)	
-1.5	not supported		(6,6°)	(6,2)	(4,9)	(4,0)	(3,4)	(2,9)	
	4-point supported		6,6° (6,6°)	8,6° (8,6°)	7,0° (7,0°)	5,8° (5,8°)	4,8° (4,8°)	3,8° (3,8°)	
-3	not supported				(4,9)	(4,0)			
	4-point supported				6,1° (6,1°)	5,0° (5,0°)			
Max. Reach 15.2 m									
2.5	not supported								(2,4°)
	4-point supported								2,4° (2,4°)

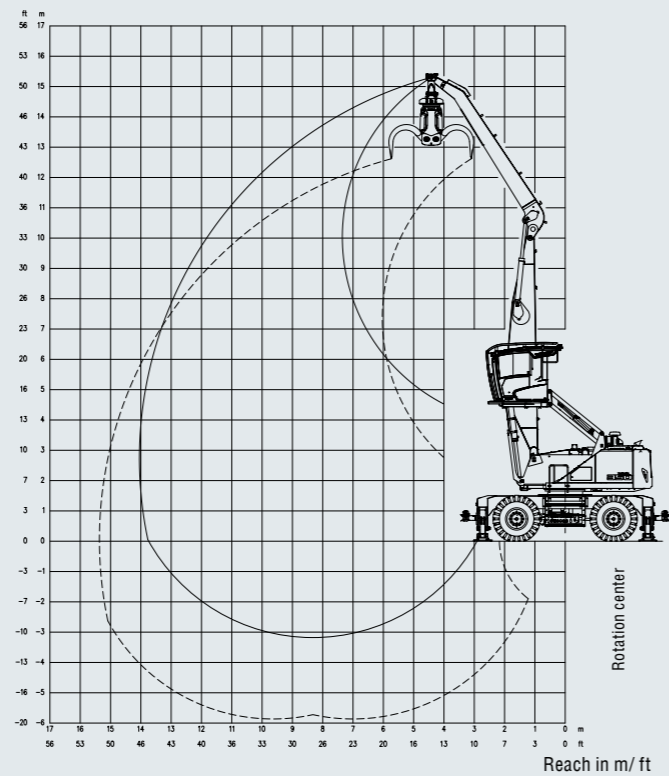
WORKING RANGE | MHL350 HD

REACH 14 M WITH DIPPER STICK

Loading equipment	Box-type boom 7.3 m Dipper stick 6.2 m Timber grapple
--------------------------	---

Grab size	Recommended attachments upon request
------------------	--------------------------------------

The lift capacity values are stated in metric tons (t). The pump pressure is 360 bar. In accordance with ISO 10567 the lift capacity values represents 75% of the static tipping loads or 87% of the hydraulic lifting force (marked °). On solid and level ground the values apply to a swing range of 360°. The (...) values apply in the longitudinal direction of the undercarriage. The values for "not supported" only apply via the steering axle or the locked oscillating axle. The weights of the attached load hoisting equipment (grab, load hooks, etc.) must be deducted from the lift capacity values. The working load of the lifting device must be observed. In accordance with EU Standard EN 474-5 for object handling applications hose rupture valves on the boom and stick cylinders, an overload warning device and the lift capacity table in the cab are required. For object handling application the machine has to be supported on a level ground.

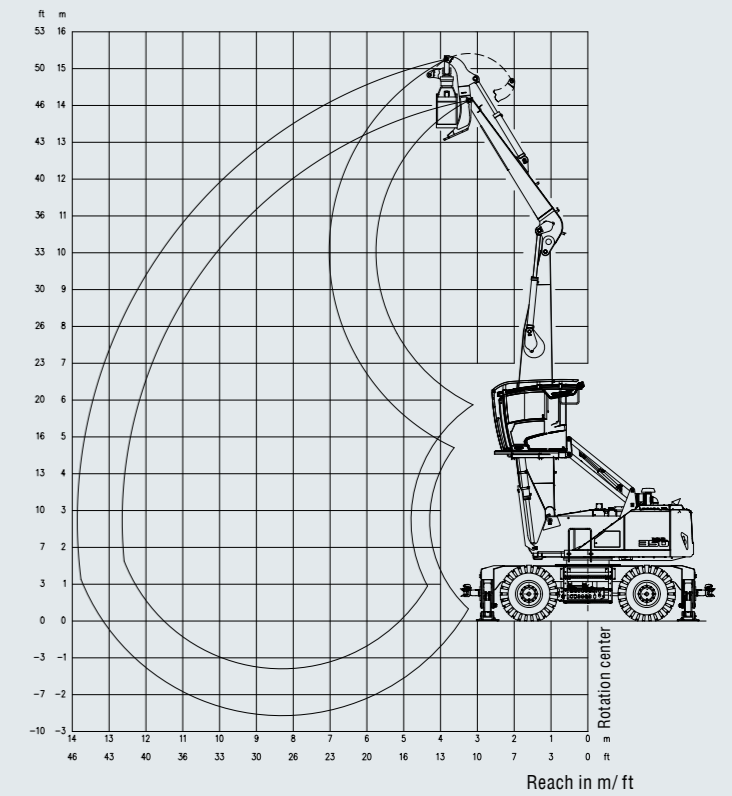


REACH 12.6 M WITH LIVE HEEL STICK

Loading equipment	Box-type boom 7.6 m Dipper stick 4.6 Live Heel Boom
--------------------------	---

Grab size	Recommended attachments upon request
------------------	--------------------------------------

The lift capacity values are stated in metric tons (t). The pump pressure is 360 bar. In accordance with ISO 10567 the lift capacity values represents 75% of the static tipping loads or 87% of the hydraulic lifting force (marked °). On solid and level ground the values apply to a swing range of 360°. The (...) values apply in the longitudinal direction of the undercarriage. The values for "not supported" only apply via the steering axle or the locked oscillating axle. The weights of the attached load hoisting equipment (grab, load hooks, etc.) must be deducted from the lift capacity values. The working load of the lifting device must be observed. In accordance with EU Standard EN 474-5 for object handling applications hose rupture valves on the boom and stick cylinders, an overload warning device and the lift capacity table in the cab are required. For object handling application the machine has to be supported on a level ground.



LIFTING CAPACITY

Height [m]	Undercarriage outrigger	Reach [m]							
		3	4.5	6	7.5	9	10.5	12	13.5
13.5	not supported				(4,6°)				
	4-point supported				4,6° (4,6°)				
12	not supported				(6,0°)	(4,7°)			
	4-point supported				6,0° (6,0°)	4,7° (4,7°)			
10.5	not supported				(6,8°)	(5,9°)	(4,4°)		
	4-point supported				6,8° (6,8°)	5,9° (5,9°)	4,4° (4,4°)		
9	not supported				(7,5°)	(6,2)	(4,8)	(3,5°)	
	4-point supported				7,5° (7,5°)	6,8° (6,8°)	5,6° (5,6°)	3,5° (3,5°)	
7.5	not supported				(8,0°)	(6,1)	(4,8)	(3,8)	
	4-point supported				8,0° (8,0°)	7,1° (7,1°)	6,4° (6,4°)	4,8° (4,8°)	
6	not supported			(9,5°)	(7,9)	(6,0)	(4,7)	(3,7)	(2,7°)
	4-point supported			9,5° (9,5°)	8,5° (8,5°)	7,4° (7,4°)	6,5° (6,5°)	5,8° (5,8°)	2,7° (2,7°)
4.5	not supported		(12,6°)	(10,7)	(7,6)	(5,7)	(4,5)	(3,7)	(3,0)
	4-point supported		12,6° (12,6°)	11,3° (11,3°)	9,2° (9,2°)	7,7° (7,7°)	6,7° (6,7°)	5,9° (5,9°)	3,7° (3,7°)
3	not supported		(15,4)	(9,9)	(7,1)	(5,5)	(4,4)	(3,6)	(3,0)
	4-point supported		18,1° (18,1°)	12,7° (12,7°)	9,8° (9,8°)	8,1° (8,1°)	6,8° (6,8°)	5,9° (5,9°)	4,2° (4,2°)
1.5	not supported		(8,0°)	(9,2)	(6,8)	(5,2)	(4,2)	(3,5)	(2,9)
	4-point supported		8,0° (8,0°)	13,5° (13,5°)	10,3° (10,3°)	8,3° (8,3°)	6,9° (6,9°)	5,8° (5,8°)	4,3° (4,3°)
0	not supported	(2,8°)	(5,8°)	(8,8)	(6,5)	(5,1)	(4,1)	(3,4)	(2,9)
	4-point supported	2,8° (2,8°)	5,8° (5,8°)	13,4° (13,4°)	10,2° (10,2°)	8,2° (8,2°)	6,7° (6,7°)	5,5° (5,5°)	3,8° (3,8°)
-1.5	not supported		(5,8°)	(8,6)	(6,3)	(4,9)	(4,0)	(3,4)	
	4-point supported		5,8° (5,8°)	11,4° (11,4°)	9,7° (9,7°)	7,7° (7,7°)	6,2° (6,2°)	4,9° (4,9°)	
-3	not supported				(6,3)	(4,9)			
	4-point supported				8,4° (8,4°)	6,7° (6,7°)			
Max. Reach 14 m									
2.7	not supported								(2,4°)
	4-point supported								2,4° (2,4°)

LIFTING CAPACITY

Height [m]	Undercarriage outrigger	Reach [m]							
		3	4.5	6	7.5	9	10.5		
12	not supported		(7,8°)	(5,5°)					
	4-point supported		7,8° (7,8°)	5,5° (5,5°)					
10.5	not supported		(9,0°)	(7,3)	(5,2)				
	4-point supported		9,0° (9,0°)	7,8° (7,8°)	5,4° (5,4°)				
9	not supported		(9,5°)	(7,3)	(5,3)	(3,9)			
	4-point supported		9,5° (9,5°)	7,9° (7,9°)	6,9° (6,9°)	4,3° (4,3°)			
7.5	not supported		(9,9°)	(7,1)	(5,2)	(3,9)			
	4-point supported		9,9° (9,9°)	8,2° (8,2°)	7,0° (7,0°)	6,0° (6,0°)			
6	not supported	(14,8°)	(9,9)	(6,8)	(5,0)	(3,8)	(3,0)		
	4-point supported	14,8° (14,8°)	10,9° (10,9°)	8,6° (8,6°)	7,2° (7,2°)	6,1° (6,1°)	3,7° (3,7°)		
4.5	not supported	(14,7)	(9,3)	(6,5)	(4,8)	(3,7)	(2,9)		
	4-point supported	17,5° (17,5°)	12,0° (12,0°)	9,2° (9,2°)	7,4° (7,4°)	6,1° (6,1°)	5,1° (5,1°)		
3	not supported		(8,6)	(6,2)	(4,6)	(3,6)	(2,9)		
	4-point supported		12,8° (12,8°)	9,5° (8,5°)	7,5° (7,5°)	6,1° (6,1°)	4,9° (4,9°)		
1.5	not supported		(8,2)	(5,9)	(4,5)	(3,5)	(2,8)		
	4-point supported		12,1° (12,1°)	9,5° (9,5°)	7,4° (7,4°)	5,9° (5,9°)	4,5° (4,5°)		
0	not supported		(8,0)	(5,7)	(4,4)	(3,5)			
	4-point supported		9,6° (9,6°)	8,9° (8,9°)	6,9° (6,9°)	5,4° (5,4°)			
-1.5	not supported			(5,7)	(4,3)				
	4-point supported			7,6° (7,6°)	5,9° (5,9°)				
Max. Reach 12.6 m									
2.7	not supported							(2,9)	
	4-point supported							2,9° (2,9°)	



LOADING EQUIPMENT

- Reach up to 16 m
- Purpose built loading equipment
- Kinematics designed for maximum stockpiling height
- Stockpiles in 2nd row can also be reached
- Grab rotation speed and pressure regulation
- Optimally arranged hydraulic pipes and hoses



LIVE HEEL

- Specially developed for wood handling
- Perfect for handling of tree length wood



CABIN

- Hydraulically adjustable cab
- Large skylight
- Sliding window in cab door
- Tinted safety glass
- Automatic air conditioning system
- 5.9 m eye level for perfect overview



UPPERCARRIAGE

- Separated cooling system for engine, hydraulic oil cooler and AC condenser
- Temperature-controlled fan drives
- Highly energy-efficient
- Cover plates, robust steel design
- Rear and side view camera



UNDERCARRIAGE

- Ground clearance 480 mm
- FEM-based, robust, torsion-resistant steel construction, symmetrical arrangement of the axles
- Protection guard for drivetrain



TRAILER

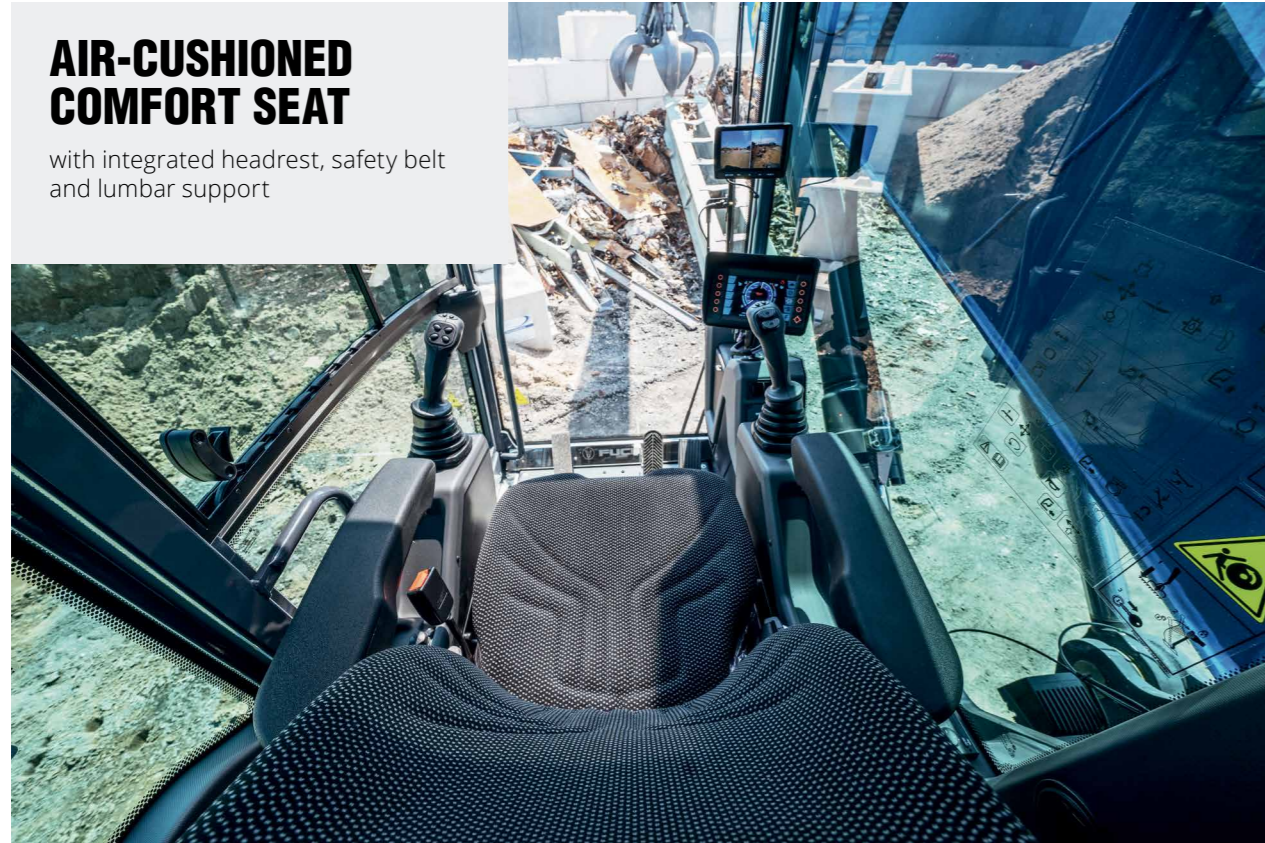
- Pulling capacity up to 80 t
- Different trailer hitches on demand
- Speedometer standard

GREAT FEATURES

COME STANDARD WITH YOUR FUCHS

AIR-CUSHIONED COMFORT SEAT

with integrated headrest, safety belt and lumbar support



STORAGE SPACE

storage and cup holder air conditioned



7" TOUCH SCREEN DISPLAY

with large dimensions provides great overview and info at a glance



FUCHS SERVICE PLATFORM

safe place for daily checks and maintenance



HIGH PRESSURE FILTRATION SYSTEM FOR ATTACHMENTS

effective protection against contamination of hydraulic oil from damaged or leaking attachments



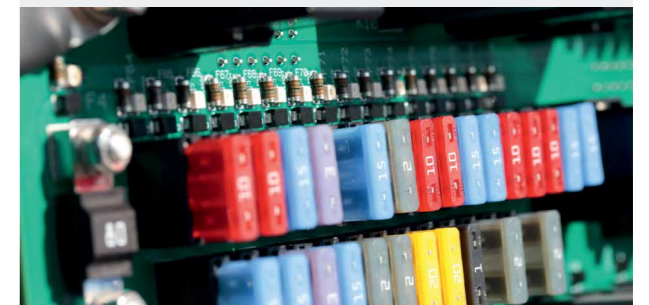
BOOM CYLINDER DAMPING SYSTEM

for smooth operations



QUICK FUSE CHECK BUTTON

makes it quick and easy to check the fuses of your Fuchs



SEPARATE COOLING SYSTEM

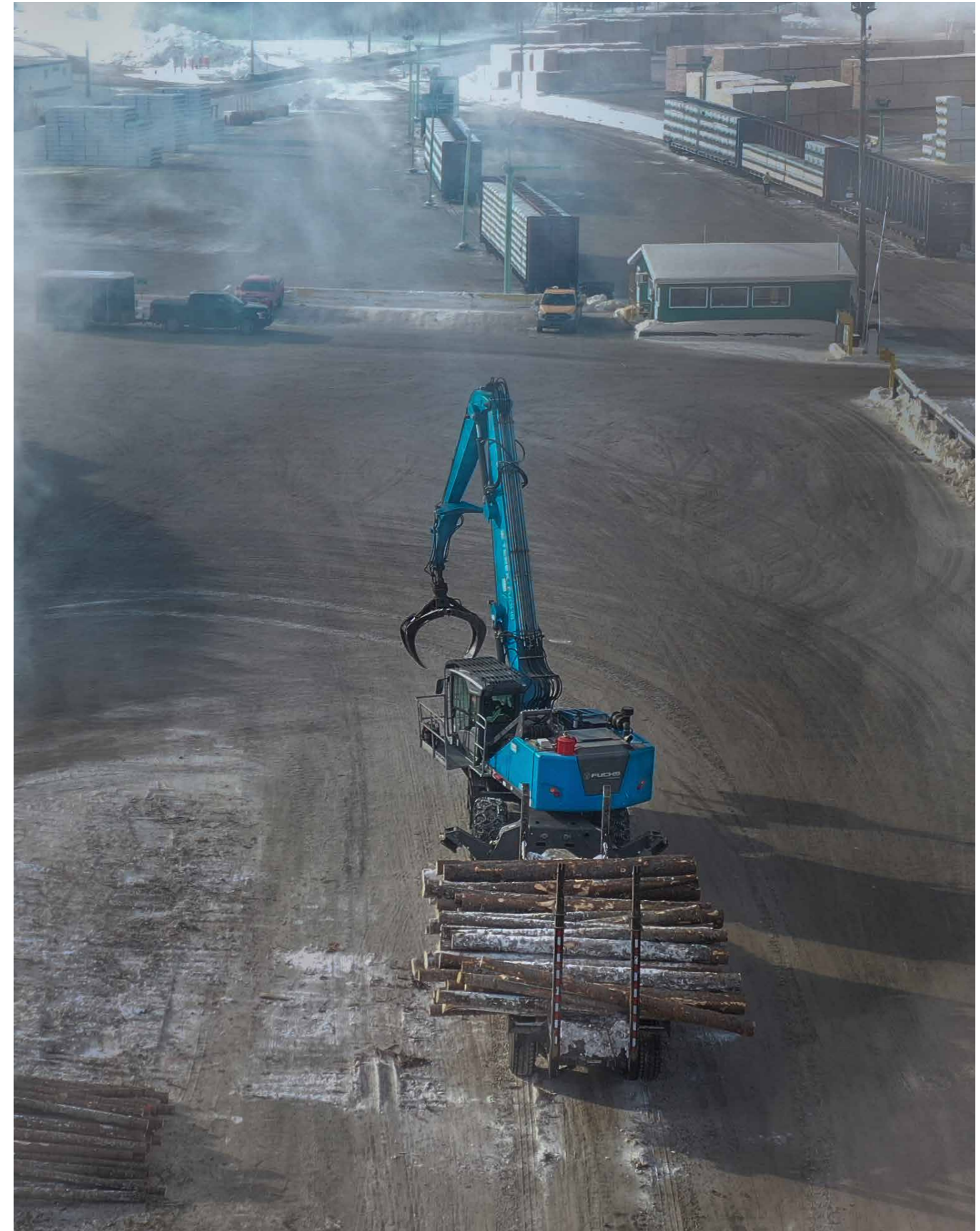
for engine and hydraulic oil cooler



AUTOMATED GREASING SYSTEM

ensures key components running smoothly









www.terex-fuchs.com

August 2021. Product specifications and prices are subject to change without notice or obligation. The photographs and/or drawings in this document are for illustrative purposes only. Refer to the appropriate Operator's Manual for instructions on the proper use of this equipment. Failure to follow the appropriate Operator's Manual when using our equipment or to otherwise act irresponsibly may result in serious injury or death. The only warranty applicable to our equipment is the standard written warranty applicable to the particular product and sale and Terex makes no other warranty, express or implied. © Terex Corporation 2020 - Terex, the Terex Crown design, Fuchs and Works For You are trademarks of Terex Corporation or its subsidiaries.

Terex@DeutschlandGmbH|Industriestraße3|76669BadSchönborn|Germany|Fon:+49(0)725384-0|Fax:+49(0)725384-102|info@terex-fuchs.com

