

Crawler excavator

R 924
Litronic®

Operating Weight: 23,500 - 27,600 kg
Engine Output: 115 kW / 157 HP
Bucket Capacity: 0.75 - 1.65 m³



LIEBHERR

R 924

Litronic®

Operating Weight: 23,500 - 27,600 kg

Engine Output: 115 kW / 157 HP

Bucket Capacity: 0.75 - 1.65 m³



Performance

The new R 924 crawler excavator is a high-performance and versatile model. The wide range of equipment and tools available makes it even more adaptable, as it can be used for a variety of applications, including trench work or in other projects such as landscaping.

Reliability

Liebherr-France SAS perpetuates the Liebherr Group's tradition of quality and innovation to offer a product that satisfies the needs of its clients throughout the world. This new R 924 excavator is recommended for completely reliable operation in all conditions.

Comfort

Another advantage of the R 924 is a space especially created to satisfy the operator's needs. The cab offers a spacious, comfortable and quiet environment. Its ergonomics definitively enhances the operator's performance.

Economy

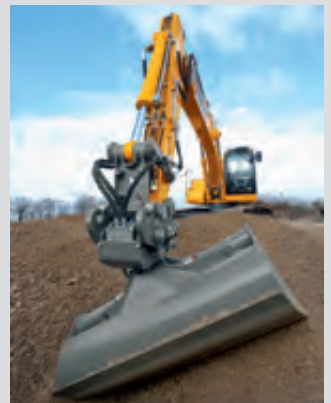
A completely new maintenance concept reduces service time on the new R 924. The grouping together of maintenance components and accessibility from ground level are aspects that make the excavator gain in productivity. Return on investment is therefore guaranteed.





Clean and effective Liebherr engine

- New engine complies with requirements of Tier 4i/Stage IIIB regulations on exhaust gas emissions
- Especially designed for construction engine applications
- State-of-the-art technology with common rail injection system
- Automatic idling system optimises energy efficiency
- Two-stage supercharger with intercooler for more power at low revs



Performance

The new R 924 crawler excavator is a high-performance and versatile model. The wide range of equipment and tools available makes it even more adaptable, as it can be used for a variety of applications, including trench work or in other projects such as landscaping.

Liebherr integrated systems engineering

High-tech for high performance

The R 924 excavator is fitted with Liebherr's Positive Control hydraulic system. This system is controlled by Liebherr electronics and uses strategically-positioned sensors. All of the machine's work is therefore faster, more accurate and fluid. What's more, as the two hydraulic pump circuits can operate either separately or in unison, this optimises the energy management of the R 924.

Multi-purpose

The Liebherr Tool-Control System

The Tool-Control function makes it easy to change tools thanks to recognition of the chosen tool's system. It makes the programmed pressure and flow values available from the moment the hydraulic tool is changed. Consequently, the crawler excavator has more availability for productive tasks, and adjustment times are reduced.

A wide range of equipment

The R 924 is an excavator adapted to all types of works. The wide range of Liebherr tools and equipment available helps meet these needs. The different sticks offered can, for example, be associated with a straight gooseneck boom, a hydraulically-adjustable boom, or an offset gooseneck boom. A hydraulic quick-change attachment or Liebherr's Likufix system are offered as options. These elements allow fast and easy tool-changing.

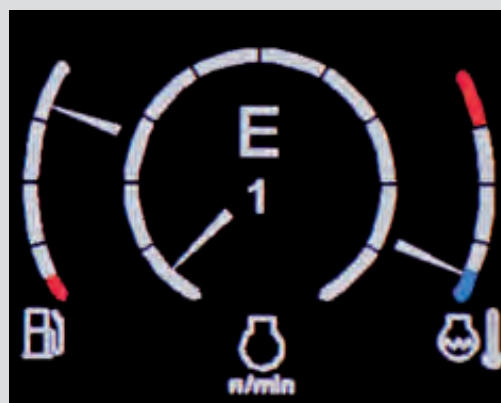
A full-force excavator

The R 924's 178 kN break-out forces and 132 kN penetration forces are among this engine's major advantages: these forces are key factors for even more productivity and performance.



Wide range of Liebherr tools and equipment

- Backhoe buckets, 2 x 50° tilt buckets, 2 x 50° fixed and tilt ditch-cleaning buckets
- Wide range of clamshells and sorting grapples
- 2 x 50° tiltrotator
- Patented tooth system, suitable for a variety of applications



Intelligent work modes

- Economy Mode: for economical and ecologically-friendly operation. Recommended for normal working conditions
- Power Mode: for high excavation capacities and difficult applications
- Sensitivity Mode: for precision jobs and the loading of materials
- Full Power Mode: especially designed for increased power; ideal for extreme applications



A robust undercarriage

- Large range of undercarriages for various applications
- Maintenance is easier due to the alignment between the upper plate of the central part and the shell of the track carriers, the steps mounted on the vertical side of the track carrier and the wide openings under the support rollers
- X-shaped design for a better distribution of stresses and a longer service life



Reliability

Liebherr-France SAS perpetuates the Liebherr Group's tradition of quality and innovation to offer a product that satisfies the needs of its clients throughout the world. This new R 924 excavator is recommended for completely reliable operation in all conditions.

The tradition of quality and robustness

Better stresses distribution

The R 924 crawler excavator is a product designed to withstand major stresses. The robustness of the undercarriage lengthens the service life of the machine. Molded steel parts strengthen the excavator at strategic points for difficult applications.

ROPS Structure

For complete peace-of-mind while working in even the most demanding terrains, the operator's cab is fitted with an integrated roll-over protection.

Automatic operation monitoring

The operator can concentrate fully on the task: the integrated on-board electronics ensure a constant readjustment to preset values. Any potential divergences from the operating parameters are displayed on the control screen.

Liebherr-Service

An excellent after-sales service

The after-sales services can be customised to suit and respond to your specific needs. Several programmes, such as ReMan, ReBuilt and Repair provide the perfect, economical solution, always including the manufacturer's quality and guarantee. A team of highly trained Service technicians has all the latest-generation diagnostic tools at its disposal, for a reduced machine downtime. By following your chosen maintenance programme, you will also obtain a higher resale price.

Spare parts

Spare parts available: a permanent stock of over 80,000 catalogue items, covering 98% of needs, is available to you 24 hours a day using the online service portal, Liebherr-P@rts24, with an integrated ordering procedure reserved for Liebherr clients. A team is at your service to answer all your requests across the 5 continents.



LiDAT fleet management system

- A single point of contact for the complete management of the fleet
- Daily reports on the fleet of machines via the internet portal
- Accurate localisation of the machines
- Optimised security thanks to geographical limitations and established shut off times
- An updated transmission several times a day



Key components developed by Liebherr

- A perfect harmonisation of the machine's elements for worksite applications
- The main mechanically-welded structures, such as the undercarriage, attachment and uppercarriage are designed by Liebherr
- Engine, hydraulic pumps, transfer gearbox, transmission, rotating mechanism, crown wheel and electronic components manufactured by Liebherr



Storage space

- Numerous storage options (e.g. for documents, jacket and shoes, etc.)
- An optional chiller behind the operator's seat is available; providing cool drinks within hand's reach for even more comfort



Comfort

Another advantage of the R 924 is the space especially created to satisfy the operator's needs. The cab offers a spacious, comfortable and quiet environment. Its ergonomics definitively enhances the operator's performance.

A spacious and comfortable work space

A first class work space In this cab, operators have a pneumatic seat, an enlarged space and an environment with all modern comforts. Depending on the operator's needs, the Liebherr Premium seat can be chosen as an option. This seat offers maximum seating comfort thanks to its pneumatic lumbar support, its electronic weight-actuated height adjuster and its air-conditioning with activated charcoal and built-in fan. It is especially designed for the operators' well-being.

Sound level and vibrations reduced to a minimum

To increase work comfort and productivity, the acoustic power inside the operator's cab is only 72 dB. The cab is mounted on viscoelastic rivets that ensure the vibrations are fully absorbed. The rubber flanges that support the pipes also actively participate in reducing external noise.

Ergonomic controls for optimal manipulation

All the controls are positioned so that the operator can intuitively and accurately manipulate them. The consoles on which the controls and manipulators rest are adjoined to the seat for optimal comfort while working and more accurate movements.

A panoramic view of the whole work area

A rear-space camera is fitted in the R 924 counter weight. A display on the 7" high resolution screen allows the operator to work in a secure area. This complete visibility gives the operator full confidence in the tasks they perform.



7" color touchscreen

- Several adjustment, control and monitoring possibilities (Display of fuel consumption, air-conditioning, tool control, etc.)
- Robust and reliable design (IP 65 ingress protection)
- High resolution video compatibility for displaying rear-space camera images



Ergonomic proportional manipulators

- The proportional control allows a very fine manoeuvrability for a sensitive, accurate and more fluid operation of hydraulic tools
- The sensitive manipulator with proximity switch allows greater responsiveness while resuming rpm



Long maintenance intervals

- New crawler tracks with permanently lubricated, zero-maintenance chain links
- Hydraulic oil change every 8000 hours
- Engine oil change every 500 hours
- Rapid filling of the fuel tank with the electric pump at 80 l/min





Economy

A completely new maintenance concept reduces service time on the new R 924. The grouping together of maintenance components and accessibility from ground level are aspects that make the excavator gain in productivity. Return on investment is therefore guaranteed.

Simplified maintenance requires only short interventions

Easier maintenance

All the maintenance points were designed for easier access and to make the daily maintenance operations shorter. The gull-wing doors provide access to the parts from ground level. The maintenance of most components, such as fuel filters and radiators, is performed in complete safety. Grouped together into very distinct compartments, this machine's maintenance will save you time and increase productivity on your work sites.

Automatic centralised lubrication system as standard

The fully automated lubrication system is a true time-saver for the operator, with minimum machine downtime.

More effective energy management at all times

The engineering of Liebherr's integrated systems and the effective management of the engine and hydraulics are constantly controlling fuel consumption. The new diesel engine, automatic idling, electronic engine speed sensing regulation and Regeneration Plus are just some of the elements that contribute to better energy management. This consumption control minimises the discharge of toxic gases into the atmosphere whilst saving on operating costs.

Liebherr lubricants

- Complete range of lubricants and coolants for your Liebherr engines
- Special hotline with product specialists available to advise you. Liebherr, your lubricant supplier: a reliable long-term partner



Particle filters designed and manufactured by Liebherr

- At least 99% elimination of exhaust gas particle emissions (VERT certification)
- Active regeneration of the particle filter, causing no inconvenience to the operator whilst optimising the machine's performance
- Easily accessible filter unit

Experience the progress

R 924

A large choice of equipment

- Two-piece Boom, offset mono boom, or straight boom: a solution for every application
- Extremely resistant against stresses for a longer service life

A multi-purpose tool carrier

- Wide range of special Liebherr tools and buckets
- Liebherr's patented tooth system
- Liebherr systems such as quick-change, Likufix, etc.

Work in complete safety

- Unobstructed visibility, integrated rear-space camera, and rear view mirrors fitted in strategic places as standard
- Intelligent layout of controls and clear information in the operator's workstation
- Secure access to the uppercarriage and operator's cab
- ROPS certified structure



A very comfortable operator's workstation

- Modern and spacious workspace
- Fewer vibrations and less noise
- 7" high resolution touchscreen

A new Liebherr engine

- Engine complies with Tier 4i/Stage IIIB emission regulations
- Especially designed for construction engine applications
- Automatic idling system optimises energy efficiency

A completely new maintenance concept

- Elements within hand's reach, accessible from ground level
- The filters are grouped together, for shorter maintenance works
- Automatic centralised lubrication as standard

A reliable undercarriage

- Reliable and robust undercarriage, easy to secure thanks to fitted securing rings
- Large range of undercarriages to meet the needs of different terrains
- Easy maintenance and cleaning inherent to the very design of the undercarriage

Technical Data



Engine

Rating per ISO 9249	115 kW (157 HP) at 1,800 RPM
Model	Liebherr D 934 A7
Type	4 cylinder in-line
Bore/Stroke	122/150 mm
Displacement	7.0 l
Engine operation	4-stroke diesel
Exhaust gas treatment	Common-Rail, bi-turbo
	particle filter with active regeneration
	emission standard stage IIIB/Tier 4i
Cooling	water-cooled and integrated motor oil cooler, after-cooled and fuel cooled
Air cleaner	dry-type air cleaner with pre-cleaner, primary and safety elements
Fuel tank	444 l
Electrical system	
Voltage	24 V
Batteries	2 x 180 Ah/12 V
Starter	24 V/7.8 kW
Alternator	three phase current 28 V/100 A
Engine idling	sensor-controlled
Motor management	connection to the integrated excavator system controlling via CAN-BUS to the economical utilisation of the service that is available



Hydraulic System

Hydraulic system	Positive Control. Dual circuit hydraulic system for independent and need-based quantity allotment via the hydraulic pumps; sensor-guided. Features high system dynamics and sensibility provided by integrated system controlling
Hydraulic pump	Liebherr variable displacement pump built in transversal plate style, in parallel arrangement with integrated transfer box
Max. flow	2 x 214 l/min.
Max. pressure	380 bar
Pump management	electronic pump management via the integrated system controlling (CAN-BUS) synchronous to the control block
Hydraulic tank	287 l
Hydraulic system	max. 360 l
Hydraulic oil filter	1 full flow filter (10 µm)
Hydraulic oil cooler	compact cooler, consisting of a water cooler, sandwiched with hydraulic oil cooler, gearbox oil cooler, fuel cooler and after-cooler cores and hydrostatically driven fan
MODE selection	adjustment of engine and hydraulic performance via a mode pre-selector to match application, e.g. for especially economical and environmentally friendly operation or for maximum digging performance and heavy-duty jobs
RPM adjustment	stepless adjustment of engine output via RPM at each selected mode
Tool Control	10 preadjustable pump flows and pressures for add-on tools



Hydraulic Controls

The controlling is conducted via the integrated excavator system technology, input and output modules, communicated via the CAN-BUS with the electronic central unit.

Power distribution	via control valve with integrated safety valves
Servo circuit	
Attachment and swing	proportional via joystick levers
Travel	- with proportionally functioning foot pedals and adjusted with a plugable lever
	- speed pre-selection
Additional functions	proportional regulation via slide switches or foot pedals



Swing Drive

Drive by	Liebherr swash plate motor, shockless and anti-reaction
Transmission	Liebherr compact planetary reduction gear
Swing ring	Liebherr, sealed single race ball bearing swing ring, internal teeth
Swing speed	0 - 11 RPM stepless
Swing torque	71,1 kNm
Holding brake	wet multi-disc (spring applied, pressure released)



Operator's Cab

Cab	ROPS safety cab structure with individual wind-screens or featuring a slide-in subpart under the ceiling, work headlights integrated in the ceiling, a door with a side window (can be opened on both sides), large stowing and depositing possibilities, shock-absorbing suspension, sound-damping insulating, tinted laminated safety glass, separate window shades for the sunroof window and windscreen, 12 V plug, storage bins, lunch-box, cup holder
Operator's seat	Comfort seat, airsprung with automatic weight adjustment, vertical and horizontal seat damping including consoles and joysticks. Seat and arm-rests adjustable separately and in combination, seat heating as standard
Control system	arm consoles, swinging with the seat
Operation and displays	large high resolution colour display with self-explanatory operation via touch screen, video, versatile adjusting, control and monitoring facilities, e.g. climate control, implement and tool parameters
Air-conditioning	standard automatic air-conditioning, ambient air function, fast de-icing and demisting at the press of a button, air vents can be operated via a menu; ambient air and fresh air filters can be easily replaced and are accessible from the outside; heating-cooling unit, designed for extreme outside temperatures, sensors for solar radiation, inside and outside temperatures
Noise emission	
ISO 6396	L_{pA} (inside cab) = 72 dB(A)
2000/14/EC	L_{WA} (surround noise) = 102 dB(A)



Undercarriage

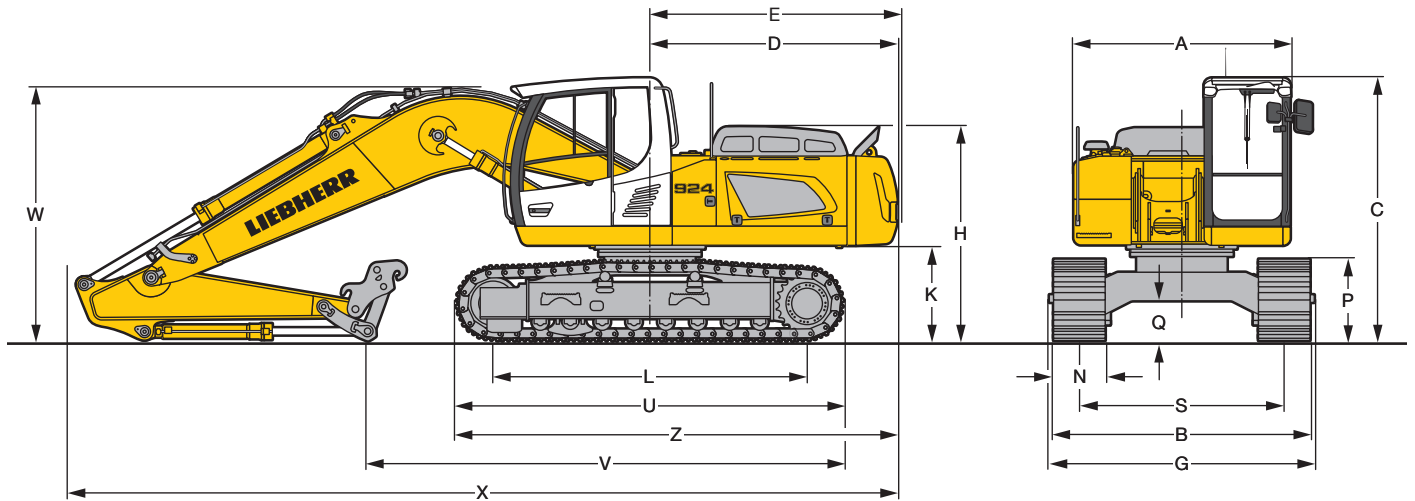
Versions	
NLC	gauge 2,000 mm
SLC	gauge 2,250 mm
LC	standard gauge 2,380 mm
WLC	gauge 2,590 mm
Drive	Liebherr swash plate motors with integrated brake valves on both sides
Transmission	Liebherr planetary reduction gears
Travel speed	low range - 3.7 km/h
	high range - 6.1 km/h
Net drawbar pull on crawler	199 kN
Track components	B 60, maintenance-free
Track rollers/Carrier rollers	NLC/SLC/LC: 8/2
	WLC: 9/2
Tracks	sealed and greased
Track pads	triple-grouser
Digging locks	wet multi-discs (spring applied, pressure released)
Brake valves	integrated into travel motor
Lashing eyes	integrated



Attachment

Type	combination of resistant steel plates and cast steels components
Hydraulic cylinders	Liebherr cylinders with special seal-system, shock protection
Pivots	sealed, low maintenance
Lubrication	automatic central lubrication system (except link and tilt geometry)
Hydraulic connections	pipes and hoses equipped with SAE splitflange connections
Bucket	fitted as standard with Liebherr tooth system

Dimensions



	NLC			SLC					
	mm			mm					
A	2,545			2,545					
C	3,060			3,060					
D	2,880			2,880					
E	2,900			2,900					
H	2,490			2,490					
K	1,110			1,110					
L	3,648			3,648					
P	950			950					
Q	465			465					
S	2,000			2,250					
U	4,505			4,505					
Z	5,135			5,135					
N	500	600	750	500	600	750	900		
B	2,500	2,600	2,750	2,750	2,850	3,000	3,150		
G	2,480	2,680*	2,750*	2,790	2,790	2,990*	3,090*		

	LC				WLC							
	mm				mm							
A	2,545				2,545							
C	3,060				3,060							
D	2,880				2,880							
E	2,900				2,900							
H	2,490				2,490							
K	1,110				1,110							
L	3,648				3,838							
P	950				950							
Q	465				465							
S	2,380				2,590							
U	4,505				4,700							
Z	5,135				5,230							
N	500	600	750	900	500	600	750	900				
B	2,880	2,980	3,130	3,280	3,090	3,190	3,340	3,490				
G	2,920	2,920	3,120*	3,220*	3,130	3,130	3,330*	3,430*				

E = Tail radius

* = Width with removable steps

Mono Boom 5.70 m						
Stick length		m	2.40	2.70	3.00	3.70
V	for NLC-/SLC-/LC-Undercarriage	mm	5,550	5,300	5,000	4,250
	for WLC-Undercarriage	mm	5,650	5,400	5,100	4,350
W		mm	2,950	3,000	3,050	3,000
X		mm	9,650	9,650	9,700	9,650

Straight Mono Boom 6.00 m						
Stick length		m	2.40	2.70	3.00	3.70
V	for NLC-/SLC-/LC-Undercarriage	mm	6,100	5,900	5,650	5,050
	for WLC-Undercarriage	mm	6,350	6,200	6,000	5,750
W		mm	2,850	2,950	3,050	3,250
X		mm	10,000	10,000	10,000	10,000

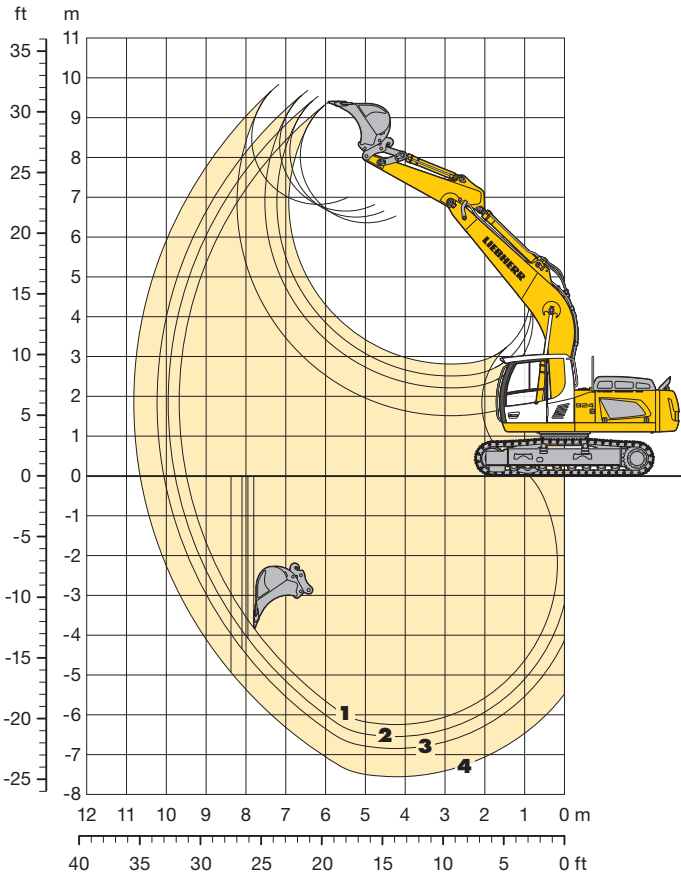
Two-piece Boom 3.50 m						
Stick length		m	2.40	2.70	3.00	3.70
V	for NLC-/SLC-/LC-Undercarriage	mm	5,900	5,650	5,400	4,700
	for WLC-Undercarriage	mm	6,000	5,750	5,500	4,800
W		mm	2,700	2,750	2,900	2,950
X		mm	9,900	9,900	9,900	9,900

Two-piece Boom 4.00 m						
Stick length		m	2.40	2.70	3.00	3.70
V	for NLC-/SLC-/LC-Undercarriage	mm	6,400	6,200	5,950	5,300
	for WLC-Undercarriage	mm	6,500	6,300	6,050	5,400
W		mm	2,750	2,800	2,900	3,000
X		mm	10,400	10,400	10,400	10,400

Offset Mono Boom 5.70 m						
Stick length		m	2.40	2.70	3.00	3.70
V	for NLC-/SLC-/LC-Undercarriage	mm	5,550	5,200	4,900	9,650
	for WLC-Undercarriage	mm	5,650	5,300	5,000	9,750
W		mm	2,850	2,850	2,900	2,950
X		mm	9,650	9,650	9,700	9,650

Backhoe Bucket

with Mono Boom 5.70 m



Digging Envelope with Quick Coupler

		1	2	3	4
Stick length	m	2.40	2.70	3.00	3.70
Max. digging depth	m	6.25	6.55	6.85	7.55
Max. reach at ground level	m	9.50	9.80	10.05	10.65
Max. dump height	m	6.35	6.50	6.65	6.80
Max. teeth height	m	9.40	9.55	9.70	9.80

Digging Forces without Quick Coupler

		1	2	3	4
Digging force ISO	kN	132	121	112	96
	t	13.5	12.3	11.4	9.8
Breakout force	kN	178	178	178	178
	t	18.1	18.1	18.1	18.1

with Quick Coupler

Digging force ISO	kN	125	115	107	92
	t	12.7	11.7	10.9	9.4
Breakout force	kN	153	153	153	153
	t	15.6	15.6	15.6	15.6

Operating Weight and Ground Pressure

Operating weight includes basic machine with mono boom 5.70 m, stick 2.40 m, quick coupler 48 and bucket 0.95 m³.

		NLC			SLC		
		500	600	750	500	600	750
Undercarriage	mm	500	600	750	500	600	750
Pad width	mm	500	600	750	500	600	750
Weight	kg	23,500	23,750	24,350	23,600	23,850	24,450
Ground pressure	kg/cm ²	0.60	0.50	0.41	0.60	0.50	0.41

		LC			WLC		
		500	600	750	500	600	750
Undercarriage	mm	500	600	750	500	600	750
Pad width	mm	500	600	750	500	600	750
Weight	kg	23,650	23,900	24,500	24,300	24,550	25,300
Ground pressure	kg/cm ²	0.60	0.50	0.41	0.59	0.49	0.41

Optional: heavy counterweight
(Heavy counterweight increases the operating weight by 1,000 kg and ground pressure by 0.02 kg/cm²)

Buckets Machine stability per ISO 10567* (75% of tipping capacity)

Cutting width mm	Capacity ISO 7451 m ³	Weight kg	NLC-Undercarriage				SLC-Undercarriage				LC-Undercarriage				WLC-Undercarriage			
			Stick length (m)				Stick length (m)				Stick length (m)				Stick length (m)			
			2.40	2.70	3.00	3.70	2.40	2.70	3.00	3.70	2.40	2.70	3.00	3.70	2.40	2.70	3.00	3.70
1,050 ¹⁾	0.95	700	□	□	□	△	□	□	□	□	□	□	□	□	□	□	□	□
1,250 ¹⁾	1.15	780	□	△	△	■	□	□	□	△	□	□	□	△	□	□	□	△
1,400 ¹⁾	1.35	860	△	■	■	▲	□	△	△	■	□	□	△	■	□	□	□	■
1,500 ¹⁾	1.45	900	■	■	▲	▲	△	△	■	■	□	△	△	■	□	□	△	■
1,600 ¹⁾	1.55	940	■	▲	▲	▲	△	■	■	▲	△	△	■	▲	□	□	△	▲
1,500 ¹⁾	1.65	1,020	▲	▲	▲	▲	■	■	■	▲	△	■	■	▲	△	△	■	▲
1,050 ²⁾	0.95	710	□	□	△	△	□	□	□	△	□	□	□	□	□	□	□	□
1,250 ²⁾	1.15	790	△	△	■	■	□	□	△	■	□	□	□	△	□	□	□	△
1,400 ²⁾	1.35	870	■	■	▲	▲	△	△	■	■	□	△	△	■	□	□	□	■
1,500 ²⁾	1.45	910	■	▲	▲	▲	△	■	■	▲	△	△	■	▲	□	□	△	▲
1,600 ²⁾	1.55	950	▲	▲	▲	▲	■	■	■	▲	△	■	■	▲	□	△	△	▲
1,500 ²⁾	1.65	1 030	▲	▲	▲	▲	■	▲	▲	▲	■	■	▲	▲	△	△	■	▲

* Indicated loads are based on ISO 10567 max. stick length, lifted 360° on firm

¹⁾ Standard bucket for direct mounting with teeth Z 40

²⁾ Standard bucket for mounting to quick coupler with teeth Z 40

Other backhoes available on request

Max. material weight □ = ≤ 1.8 t/m³, △ = ≤ 1.5 t/m³, ■ = ≤ 1.2 t/m³, ▲ = not authorized

Lift Capacities

with Mono Boom 5.70 m

Stick 2.40 m

m	Under-carriage	3.0 m		4.5 m		6.0 m		7.5 m		9.0 m		m
		LC	WLC	LC	WLC	LC	WLC	LC	WLC	LC	WLC	
10.5	NLC ¹⁾											
	SLC											
	LC											
9.0	NLC ¹⁾											
	SLC											
	LC											
7.5	NLC ¹⁾											
	SLC									3.6*	3.6*	5.9
	LC									3.6*	3.6*	
6.0	NLC ¹⁾					4.6	5.5*			3.4*	3.4*	
	SLC					5.5*	5.5*			3.4*	3.4*	7.1
	LC					5.5*	5.5*			3.4*	3.4*	
4.5	NLC ¹⁾			6.8	7.1*	4.3	6.0*	3.0	4.8*	2.8	3.4*	
	SLC			7.1*	7.1*	5.0	6.0*	3.7	4.8*	3.2	3.4*	7.8
	LC			7.1*	7.1*	5.3	6.0*	3.7	4.8*	3.4*	3.4*	
3.0	NLC ¹⁾	10.8*	10.8*	6.2	8.8*	4.0	6.8*	2.9	5.4	2.5	3.6*	
	SLC	10.8*	10.8*	7.1	8.8*	4.7	6.8*	3.3	5.5	2.9	3.6*	8.1
	LC	10.8*	10.8*	7.6	8.8*	5.0	6.8*	3.5	5.5	3.1	3.6*	
1.5	NLC ¹⁾			5.6	10.4*	3.7	7.3	2.7	5.2	2.3	4.0*	
	SLC			6.5	10.4*	4.4	7.5	3.1	5.3	2.7	4.0*	8.2
	LC			7.0	10.4*	4.7	7.5	3.4	5.3	2.9	4.0*	
0	NLC ¹⁾	8.4*	8.4*	5.3	11.0*	3.5	7.1	2.6	5.1	2.4	4.6*	
	SLC	8.4*	8.4*	6.2	11.0*	4.1	7.2	3.0	5.2	2.8	4.6*	8.0
	LC	8.4*	8.4*	6.7	11.0*	4.4	7.2	3.3	5.2	3.0	4.6*	
-1.5	NLC ¹⁾	9.8	12.9*	5.2	10.7*	3.5	7.0*			2.6	5.1	
	SLC	11.8	12.9*	6.1	10.7*	4.1	7.1			3.0	5.1	7.5
	LC	12.9	12.9*	6.6	10.7*	4.4	7.1			3.2	5.2	
-3.0	NLC ¹⁾	12.9*	12.9*	7.6	10.7*	5.0	7.9			3.7	5.7	
	SLC	12.0	13.3*	5.2	9.6*	3.5	7.1			3.1	6.1*	6.6
	LC	13.1	13.3*	6.7	9.6*	4.4	7.1*			3.9	6.2*	
-4.5	NLC ¹⁾	9.7*	9.7*	5.5	7.1*					4.6	6.1*	
	SLC	9.7*	9.7*	6.5	7.1*					5.4	6.1*	5.1
	LC	9.7*	9.7*	6.9	7.1*					5.8	6.1*	
-6.0	NLC ¹⁾											
	SLC											
	LC											

Stick 2.70 m

m	Under-carriage	3.0 m		4.5 m		6.0 m		7.5 m		9.0 m		m
		LC	WLC	LC	WLC	LC	WLC	LC	WLC	LC	WLC	
10.5	NLC ¹⁾											
	SLC											
	LC											
9.0	NLC ¹⁾											
	SLC											
	LC											
7.5	NLC ¹⁾											
	SLC							4.0*	4.0*			3.1*
	LC							4.0*	4.0*			3.1*
6.0	NLC ¹⁾							4.6	5.2*			3.0*
	SLC							5.2*	5.2*			3.0*
	LC							5.2*	5.2*			3.0*
4.5	NLC ¹⁾							4.4	5.7*			2.6
	SLC							5.0	5.7*	3.0	5.2*	3.0*
	LC							5.3	5.7*	3.7	5.2*	3.0*
3.0	NLC ¹⁾	11.3	13.6*	6.2	8.4*	4.1	6.5*	2.8	5.4	2.3	3.1*	
	SLC	13.5	13.6*	7.2	8.4*	4.7	6.5*	3.3	5.5	2.7	3.1*	8.4
	LC	13.6*	13.6*	7.7	8.4*	5.0	6.5*	3.5	5.5	2.9	3.1*	
1.5	NLC ¹⁾	6.6*	6.6*	5.6	10.1*	3.7	7.3*	2.7	5.2	2.2	3.4*	
	SLC	6.6*	6.6*	6.6	10.1*	4.4	7.3*	3.1	5.3	2.6	3.4*	8.5
	LC	6.6*	6.6*	7.0	10.1*	4.7	7.3*	3.3	5.3	2.8	3.4*	
0	NLC ¹⁾	8.6*	8.6*	5.2	10.9*	3.5	7.1	2.6	5.1	2.2	3.9*	
	SLC	8.6*	8.6*	6.2	10.9*	4.1	7.2	3.0	5.1	2.6	3.9*	8.3
	LC	8.6*	8.6*	6.7	10.9*	4.4	7.2	3.2	5.2	2.8	3.9*	
-1.5	NLC ¹⁾	9.6	12.3*	5.1	10.8*	3.4	6.9	2.5	5.0	2.4	4.7	
	SLC	11.6	12.3*	6.0	10.8*	4.0	7.1	2.9	5.1	2.8	4.8	7.8
	LC	12.3*	12.3*	6.5	10.8*	4.3	7.1	3.2	5.1	3.0	4.8	
-3.0	NLC ¹⁾	12.3*	12.3*	7.5	10.8*	4.9	7.9	3.6	5.6	3.4	4.9*	
	SLC	9.8	13.9*	5.2	9.8*	3.4	7.0			2.8	5.6	7.0
	LC	13.0	13.9*	6.6	9.8*	4.3	7.1			3.5	5.7	
-4.5	NLC ¹⁾	10.2	10.6*	5.4	7.7*					4.0	6.0*	
	SLC	10.6*	10.6*	6.3	7.7*					4.7	6.0*	5.6
	LC	10.6*	10.6*	6.8	7.7*					5.0	6.0*	
-6.0	NLC ¹⁾											
	SLC											
	LC											

Stick 3.00 m

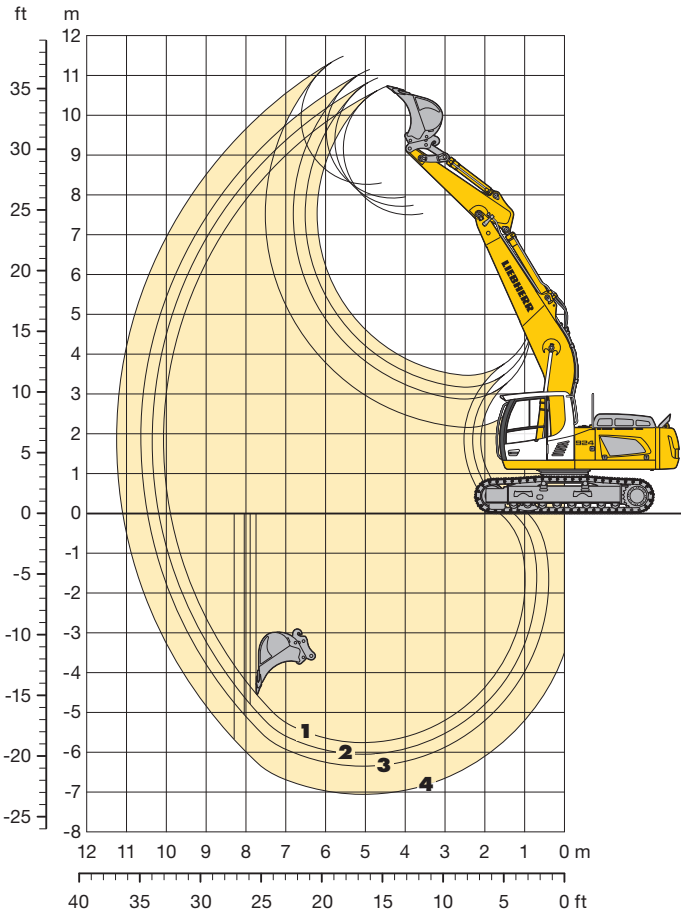
m	Under-carriage	3.0 m		4.5 m		6.0 m		7.5 m		9.0 m		m
		LC	WLC	LC	WLC	LC	WLC	LC	WLC	LC	WLC	
10.5	NLC ¹⁾											
	SLC											
	LC											
9.0	NLC ¹⁾											
	SLC											
	LC											
7.5	NLC ¹⁾											
	SLC									2.8*	2.8*	6.7
	LC									2.8*	2.8*	
6.0	NLC ¹⁾											
	SLC							3.1	3.4*	2.6*	2.6*	7.7
	LC							3.4*	3.4*	2.6*	2.6*	
4.5	NLC ¹⁾					4.4	5.4*	3.0	5.0*	2.4	2.6*	
	SLC					5.0	5.4*	3.4	5.0*	2.6*	2.6*	8.4
	LC					5.3	5.4*	3.7	5.0*	2.6*	2.6*	
3.0	NLC ¹⁾	11.7	12.4*	6.3	7.9*	4.1	6.2*	2.8	5.4*	2.2	2.7*	
	SLC	12.4*	12.4*	7.3	7.9*	4.7	6.2*	3.3	5.4*	2.5	2.7*	8.7
	LC	12.4*	12.4*	7.8	7.9*	5.0	6.2*	3.5	5.4*	2.7	2.7*	
1.5	NLC ¹⁾	8.3*	8.3*	5.6	9.7*	3.7	7.1*	2.7	5.2	2.1	3.0*	
	SLC	8.3*	8.3*	6.6	9.7*	4.3	7.1*	3.1	5.3	2.4	3.0*	8.8
	LC	8.3*	8.3*	7.1	9.7*	4.7	7.1*	3.3	5.3	2.6	3.0*	
0	NLC ¹⁾	8.8*	8.8*	5.2	10.7*	3.5	7.1	2.5	5.0	2.1	3.4*	
	SLC	8.8*	8.8*	6.2	10.7*	4.1	7.2	3.0	5.1	2.4	3.4*	8.6
	LC	8.8*	8.8*	6.6	10.7*	4.4	7.2	3.2	5.1	2.6	3.4*	
-1.5	NLC ¹⁾	9.5	11.7*	5.0	10.8*	3.4	6.9	2.4	4.9	2.2	4.1*	
	SLC	11.5	11.7*	6.0	10.8*	4.0	7.0	2.9	5.0	2.6	4.1*	8.1
	LC	11.7*	11.7*	6.5	10.8*	4.3	7.0	3.1	5.0	2.8	4.1*	
-3.0	NLC ¹⁾	9.6	14.5*	5.1	10.0*	3.3	6.9			2.6	5.2*	
	SLC	11.6	14.5*	6.0	10.0*	3.9	7.0			3.0	5.3	7.3
	LC	12.8	14.5*	6.5	10.0*	4.2	7.0			3.2	5.3	
-4.5	NLC ¹⁾	9.9	11.5*	5.2	8.2*	3.5	5.8*			3.5	5.8*	
	SLC	11.5*	11.5*	6.2	8.2*	4.1	5.8*			4.1	5.8*	6.0
	LC	11.5*	11.5*	6.7	8.2*	4.4	5.8*			4.4	5.8*	
-6.0	NLC ¹⁾											
	SLC											
	LC											

Stick 3.70 m

m	Under-carriage	3.0 m		4.5 m		6.0 m		7.5 m		9.0 m		m
		LC	WLC	LC	WLC	LC	WLC	LC	WLC	LC	WLC	
10.5	NLC ¹⁾											
	SLC											
	LC											
9.0	NLC ¹⁾											
	SLC											
	LC											
7.5	NLC ¹⁾											
	SLC											2.1*
	LC											2.1*
6.0	NLC ¹⁾											
	SLC											2.0*
	LC											2.0*
4.5	NLC ¹⁾											
	SLC											2.0*
	LC											2.0*
3.0	NLC ¹⁾	11.7	12.4*	6.3	7.9*	4.1	6.2*	2.8	5.4*	2.2	2.7*	
	SLC	12.4*	12.4*	7.3	7.9*	4.7	6.2*	3.3	5.4*	2.5	2.7*	8.7
	LC	12.4*	12.4*	7.8	7.9*	5.0	6.2*	3.5	5.4*	2.7	2.7*	
1.5	NLC ¹⁾	8.3*	8.3*	5.6	9.7*	3.7	7.1*	2.7	5.2	2.1	3.0*	
	SLC	8.3*	8.3*	6.6	9.7*	4.3	7.1*	3.1	5.3	2.4	3.0*	8.8
	LC	8.3*	8.3*	7.1	9.7*	4.7	7.1*	3.3	5.3	2		

Backhoe Bucket

with Straight Mono Boom 6.00 m



Digging Envelope with Quick Coupler

		1	2	3	4
Stick length	m	2.40	2.70	3.00	3.70
Max. digging depth	m	5.75	6.05	6.35	7.05
Max. reach at ground level	m	9.90	10.20	10.45	11.10
Max. dump height	m	7.50	7.70	7.90	8.25
Max. teeth height	m	10.70	10.95	11.50	11.50

Digging Forces without Quick Coupler

		1	2	3	4
Digging force ISO	kN	132	121	112	96
	t	13.5	12.3	11.4	9.8
Breakout force	kN	178	178	178	178
	t	18.1	18.1	18.1	18.1

with Quick Coupler

Digging force ISO	kN	125	115	107	92
	t	12.7	11.7	10.9	9.4
Breakout force	kN	153	153	153	153
	t	15.6	15.6	15.6	15.6

Operating Weight and Ground Pressure

Operating weight includes basic machine with straight mono boom 6.00 m, stick 2.40 m, quick coupler 48 and bucket 0.95 m³.

Undercarriage		NLC			SLC		
Pad width	mm	500	600	750	500	600	750
Weight	kg	23,550	23,800	24,400	23,650	23,900	24,500
Ground pressure	kg/cm ²	0.60	0.50	0.41	0.60	0.50	0.41

Undercarriage		LC			WLC		
Pad width	mm	500	600	750	500	600	750
Weight	kg	23,700	23,950	24,550	24,350	24,600	25,350
Ground pressure	kg/cm ²	0.60	0.50	0.41	0.59	0.49	0.41

Optional: heavy counterweight
(Heavy counterweight increases the operating weight by 1,000 kg and ground pressure by 0.02 kg/cm²)

Buckets Machine stability per ISO 10567* (75% of tipping capacity)

Cutting width mm	Capacity ISO 7451 m ³	Weight kg	NLC-Undercarriage				SLC-Undercarriage				LC-Undercarriage				WLC-Undercarriage			
			Stick length (m)				Stick length (m)				Stick length (m)				Stick length (m)			
			2.40	2.70	3.00	3.70	2.40	2.70	3.00	3.70	2.40	2.70	3.00	3.70	2.40	2.70	3.00	3.70
1,050 ¹⁾	0.95	700	□	□	△	△	□	□	□	△	□	□	□	□	□	□	□	□
1,250 ¹⁾	1.15	780	△	△	■	■	□	□	△	■	□	□	□	△	□	□	□	△
1,400 ¹⁾	1.35	860	■	■	▲	▲	△	△	■	▲	△	△	△	■	□	□	△	■
1,500 ¹⁾	1.45	900	■	▲	▲	▲	■	■	■	▲	△	■	■	▲	□	△	△	■
1,600 ¹⁾	1.55	940	▲	▲	▲	▲	■	■	▲	▲	■	■	■	▲	△	△	■	▲
1,500 ¹⁾	1.65	1,020	▲	▲	▲	▲	▲	▲	▲	▲	■	▲	▲	▲	△	■	■	▲
1,050 ²⁾	0.95	710	△	△	△	■	□	□	□	△	□	□	□	△	□	□	□	△
1,250 ²⁾	1.15	790	■	■	■	▲	△	△	△	■	□	△	△	■	□	□	□	■
1,400 ²⁾	1.35	870	▲	▲	▲	▲	■	■	■	▲	△	■	■	▲	□	△	△	■
1,500 ²⁾	1.45	910	▲	▲	▲	▲	■	■	▲	▲	■	■	■	▲	△	△	■	▲
1,600 ²⁾	1.55	950	▲	▲	▲	▲	■	▲	▲	▲	■	■	▲	▲	△	■	■	▲
1,500 ²⁾	1.65	1,030	▲	▲	▲	▲	▲	▲	▲	▲	■	▲	▲	▲	■	■	■	▲

* Indicated loads are based on ISO 10567 max. stick length, lifted 360° on firm

¹⁾ Standard bucket for direct mounting with teeth Z 40

²⁾ Standard bucket for mounting to quick coupler with teeth Z 40

Other backhoes available on request

Max. material weight □ = ≤ 1.8 t/m³, △ = ≤ 1.5 t/m³, ■ = ≤ 1.2 t/m³, ▲ = not authorized

Lift Capacities

with Straight Mono Boom 6.00 m

Stick 2.40 m

m	Under-carriage	3.0 m		4.5 m		6.0 m		7.5 m		9.0 m		m
		LC	WLC	LC	WLC	LC	WLC	LC	WLC	LC	WLC	
10.5	NLC ¹⁾ SLC LC WLC											
9.0	NLC ¹⁾ SLC LC WLC									4.2*	4.2*	4.7
7.5	NLC ¹⁾ SLC LC WLC					4.5	5.3*			3.6*	3.6*	6.5
6.0	NLC ¹⁾ SLC LC WLC					4.5	6.2*	3.0	3.7*	3.0	3.4*	7.6
4.5	NLC ¹⁾ SLC LC WLC	12.1*	12.1*	6.6	8.4*	4.2	6.7*	2.9	5.4	2.5	3.4*	8.2
3.0	NLC ¹⁾ SLC LC WLC			5.9	9.9*	3.9	7.4*	2.8	5.3	2.2	3.5*	8.6
1.5	NLC ¹⁾ SLC LC WLC			5.3	10.9*	3.6	7.2	2.6	5.1	2.1	3.8*	8.6
0	NLC ¹⁾ SLC LC WLC			5.1	10.8*	3.4	7.0	2.5	5.0	2.1	4.2	8.5
-1.5	NLC ¹⁾ SLC LC WLC	9.6	10.5*	6.0	9.8*	3.4	6.9	2.5	5.0	2.3	4.6	8.0
-3.0	NLC ¹⁾ SLC LC WLC	10.0*	10.0*	6.1	8.1*	4.3	6.2*	4.3	6.2*	3.9	4.8*	7.1
-4.5	NLC ¹⁾ SLC LC WLC			5.1	8.1*	3.4	6.2*	2.7	4.8*	4.0	4.1*	5.6
-6.0	NLC ¹⁾ SLC LC WLC			5.1	10.8*	3.4	7.0	2.5	5.0	2.1	4.2	

Stick 2.70 m

m	Under-carriage	3.0 m		4.5 m		6.0 m		7.5 m		9.0 m		m		
		LC	WLC	LC	WLC	LC	WLC	LC	WLC	LC	WLC			
10.5	NLC ¹⁾ SLC LC WLC													
9.0	NLC ¹⁾ SLC LC WLC											3.6*	3.6*	5.2
7.5	NLC ¹⁾ SLC LC WLC							4.6	5.4*			3.2*	3.2*	6.9
6.0	NLC ¹⁾ SLC LC WLC					4.5	6.0*	5.1	6.0*	3.0	4.6*	2.7	3.0*	7.9
4.5	NLC ¹⁾ SLC LC WLC	12.1*	12.1*	6.6	8.4*	4.2	6.7*	2.9	5.4	2.5	3.4*	2.3	3.0*	8.5
3.0	NLC ¹⁾ SLC LC WLC			5.9	9.9*	3.9	7.4*	2.8	5.3	2.2	3.5*	2.1	3.1*	8.9
1.5	NLC ¹⁾ SLC LC WLC			5.3	10.9*	3.6	7.2	2.6	5.1	2.1	3.8*	2.0	3.3*	8.9
0	NLC ¹⁾ SLC LC WLC			5.1	10.8*	3.4	7.0	2.5	5.0	2.1	4.2	2.0	3.7*	8.7
-1.5	NLC ¹⁾ SLC LC WLC	9.4	9.9*	5.0	10.0*	3.3	6.8	2.4	4.9	2.1	4.3	2.5	4.3	8.3
-3.0	NLC ¹⁾ SLC LC WLC	10.9*	10.9*	6.0	8.0*	4.3	7.1	3.1	5.0	2.5	3.7*	2.5	4.6*	7.5
-4.5	NLC ¹⁾ SLC LC WLC			5.3	5.9*	3.5	4.2*	3.3	6.5*	3.3	6.5*	3.4	3.9*	6.2
-6.0	NLC ¹⁾ SLC LC WLC			5.3	10.9*	3.6	7.2	2.6	5.1	2.1	3.8*	2.0	3.3*	

Stick 3.00 m

m	Under-carriage	3.0 m		4.5 m		6.0 m		7.5 m		9.0 m		m
		LC	WLC	LC	WLC	LC	WLC	LC	WLC	LC	WLC	
10.5	NLC ¹⁾ SLC LC WLC											
9.0	NLC ¹⁾ SLC LC WLC									3.2*	3.2*	5.7
7.5	NLC ¹⁾ SLC LC WLC					4.6	5.3*			2.8*	2.8*	7.2
6.0	NLC ¹⁾ SLC LC WLC					4.5	5.7*	3.0	4.8*	2.5	2.6*	8.2
4.5	NLC ¹⁾ SLC LC WLC	10.9	13.6*	6.0	9.2*	3.9	6.9*	2.7	5.3	2.1	2.6*	8.8
3.0	NLC ¹⁾ SLC LC WLC			5.1	8.1*	3.4	6.2*	2.4	4.8*	2.0	3.6*	9.2
1.5	NLC ¹⁾ SLC LC WLC			5.1	10.8*	3.4	7.0	2.5	5.0	2.1	4.2	9.2
0	NLC ¹⁾ SLC LC WLC	6.3*	6.3*	5.0	10.8*	3.3	6.9	2.4	4.9	1.8	3.5*	9.0
-1.5	NLC ¹⁾ SLC LC WLC	9.3	9.5*	4.9	10.2*	3.2	6.8	2.4	4.8	2.0	3.7*	8.6
-3.0	NLC ¹⁾ SLC LC WLC	9.4	11.7*	4.9	8.8*	3.2	6.7*	2.4	4.9	2.3	4.5*	7.8
-4.5	NLC ¹⁾ SLC LC WLC			5.1	6.5*	3.4	4.8*	3.5	3.9*	3.8	3.9*	6.6
-6.0	NLC ¹⁾ SLC LC WLC			5.1	10.8*	3.4	7.0	2.5	5.0	2.1	4.2	

Stick 3.70 m

m	Under-carriage	3.0 m		4.5 m		6.0 m		7.5 m		9.0 m		m		
		LC	WLC	LC	WLC	LC	WLC	LC	WLC	LC	WLC			
10.5	NLC ¹⁾ SLC LC WLC													
9.0	NLC ¹⁾ SLC LC WLC											2.3*	2.3*	6.7
7.5	NLC ¹⁾ SLC LC WLC									3.2	3.3*	2.1*	2.1*	8.0
6.0	NLC ¹⁾ SLC LC WLC									3.1	4.4*	2.0*	2.0*	8.9
4.5	NLC ¹⁾ SLC LC WLC	12.0	12.5*	6.3	8.3*	4.4	5.6*	3.0	5.0*	2.1	3.4*	1.9	2.0*	9.5
3.0	NLC ¹⁾ SLC LC WLC			5.1	8.1*	3.3	6.2*	2.4	4.8*	2.0	3.7*	2.0*	2.0*	9.8
1.5	NLC ¹⁾ SLC LC WLC			5.1	10.8*	3.4	7.0	2.5	5.0	2.1	4.2	2.0	3.7*	9.8
0	NLC ¹⁾ SLC LC WLC	7.3*	7.3*	5.1	10.6*	3.4	6.9	2.4	4.9	1.8	3.7	1.6	2.4*	9.7
-1.5	NLC ¹⁾ SLC LC WLC	9.1*	9.1*	5.8	10.5*	3.8	6.8	2.7	4.9	2.1	3.7	2.0	2.8*	9.3
-3.0	NLC ¹⁾ SLC LC WLC	9.2	12.0*	4.8	9.6*	3.1	6.7	2.3	4.8	2.5	2.8*	1.9	3.5*	8.6
-4.5	NLC ¹⁾ SLC LC WLC			5.1	6.5*	3.4	4.8*	3.5	3.9*	3.8	3.9*	2.4	4.0*	7.5
-6.0	NLC ¹⁾ SLC LC WLC			5.1	10.8*	3.4	7.0	2.5	5.0	2.1	4.2	2.0	3.7*	

Height
 Can be slewed through 360°
 In longitudinal position of undercarriage
 Max. reach
 * Limited by hydr. capacity

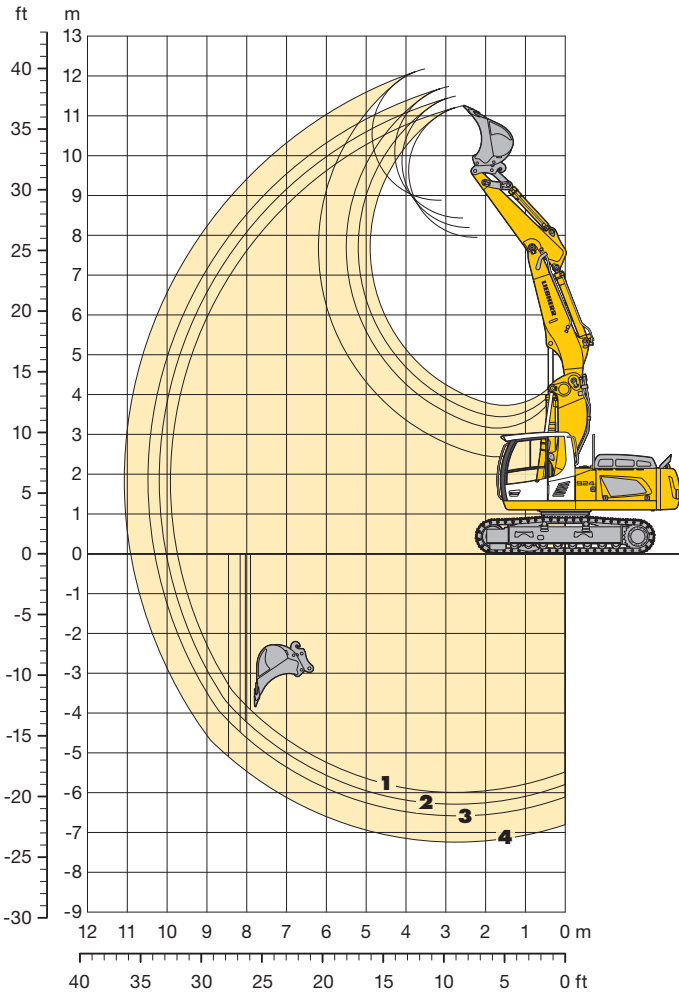
The lift capacities on the load hook of the Liebherr quick coupler 48 without attachment are stated in metric tonnes (t), and can be lifted 360° on firm, level supporting surface. Adjacent values are valid for the undercarriage when in the longitudinal position. Capacities are valid for 600 mm wide triple-grouser pads. Indicated loads are based on ISO 10567 standard and do not exceed 75 % of tipping or 87 % of hydraulic capacity (indicated by *) or are limited through the allowed lift capacity of the load hook on the quick coupler (12 t). Without quick coupler the lift capacities will increase by 250 kg, without bucket cylinder, link and lever they increase by an additional 365 kg.

According to European Standard, EN 474-5: In the European Union excavators have to be equipped with an overload warning device, a load diagram and automatic check valves on the hoist cylinders, when they are used for lifting operations which require the use of lifting accessories.

¹⁾ Values are calculated with 500 mm wide triple-grouser pads for the NLC-Undercarriage

Backhoe Bucket

with Two-piece Boom 3.50 m and Heavy Counterweight



Digging Envelope with Quick Coupler

		1	2	3	4
Stick length	m	2.40	2.70	3.00	3.70
Max. digging depth	m	6.00	6.30	6.60	7.25
Max. reach at ground level	m	9.75	10.00	10.30	10.90
Max. dump height	m	7.95	8.20	8.45	8.90
Max. teeth height	m	11.25	11.50	11.75	11.20

Digging Forces without Quick Coupler

		1	2	3	4
Digging force ISO	kN	132	121	112	96
	t	13.5	12.3	11.4	9.8
Breakout force	kN	178	178	178	178
	t	18.1	18.1	18.1	18.1

with Quick Coupler

Digging force ISO	kN	125	115	107	92
	t	12.7	11.7	10.9	9.4
Breakout force	kN	153	153	153	153
	t	15.6	15.6	15.6	15.6

Operating Weight and Ground Pressure

Operating weight includes basic machine with heavy counterweight, two-piece boom 3.50 m, stick 2.40 m, quick coupler 48 and bucket 0.95 m³.

Undercarriage		NLC			SLC		
Pad width	mm	500	600	750	500	600	750
Weight	kg	25,650	25,900	26,500	25,750	26,000	26,600
Ground pressure	kg/cm ²	0.65	0.55	0.45	0.65	0.55	0.45

Undercarriage		LC			WLC		
Pad width	mm	500	600	750	500	600	750
Weight	kg	25,800	26,050	26,650	26,450	26,700	27,450
Ground pressure	kg/cm ²	0.65	0.55	0.45	0.64	0.54	0.44

Buckets Machine stability per ISO 10567* (75% of tipping capacity)

Cutting width mm	Capacity ISO 7451 m ³	Weight kg	NLC-Undercarriage				SLC-Undercarriage				LC-Undercarriage				WLC-Undercarriage			
			Stick length (m)				Stick length (m)				Stick length (m)				Stick length (m)			
			2.40	2.70	3.00	3.70	2.40	2.70	3.00	3.70	2.40	2.70	3.00	3.70	2.40	2.70	3.00	3.70
850 ¹⁾	0.75	620	□	□	□	□	□	□	□	□	□	□	□	□	□	□	□	□
1,050 ¹⁾	0.95	700	□	□	□	△	□	□	□	□	□	□	□	□	□	□	□	□
1,250 ¹⁾	1.15	780	□	△	△	■	□	□	□	△	□	□	□	△	□	□	□	△
1,400 ¹⁾	1.35	860	△	■	■	▲	□	△	△	■	□	□	△	■	□	□	□	■
1,500 ¹⁾	1.45	900	■	■	■	▲	△	△	△	■	□	△	△	■	□	□	△	■
1,600 ¹⁾	1.55	940	■	■	■	▲	△	△	△	■	▲	△	△	■	▲	□	△	▲
850 ²⁾	0.75	630	□	□	□	□	□	□	□	□	□	□	□	□	□	□	□	□
1,050 ²⁾	0.95	710	□	□	□	△	□	□	□	△	□	□	□	△	□	□	□	△
1,250 ²⁾	1.15	790	△	△	■	■	□	□	□	■	□	□	□	■	□	□	□	■
1,400 ²⁾	1.35	870	■	■	■	▲	△	△	△	■	□	△	△	■	□	□	△	■
1,500 ²⁾	1.45	910	■	■	■	▲	△	△	△	■	▲	△	△	■	□	□	△	▲
1,600 ²⁾	1.55	950	■	▲	▲	▲	■	■	■	▲	▲	■	■	▲	□	△	■	▲

* Indicated loads are based on ISO 10567 max. stick length, lifted 360° on firm

¹⁾ Standard bucket for direct mounting with teeth Z 40

²⁾ Standard bucket for mounting to quick coupler with teeth Z 40

Other backhoes available on request

Max. material weight □ = ≤ 1.8 t/m³, △ = ≤ 1.5 t/m³, ■ = ≤ 1.2 t/m³, ▲ = not authorized

Lift Capacities

with Two-piece Boom 3.50 m and Heavy Counterweight

Stick 2.40 m

m	Under-carriage	3.0 m		4.5 m		6.0 m		7.5 m		9.0 m		m
		LC	WLC	LC	WLC	LC	WLC	LC	WLC	LC	WLC	
10.5	NLC ¹⁾											
	SLC											
	WLC											
9.0	NLC ¹⁾											
	SLC											
	WLC											
7.5	NLC ¹⁾			6.9*	6.9*	4.5*	4.5*			3.6*	3.6*	
	SLC			6.9*	6.9*	4.5*	4.5*			3.6*	3.6*	6.2
	WLC			6.9*	6.9*	4.5*	4.5*			3.6*	3.6*	
6.0	NLC ¹⁾			8.2*	8.2*	5.3*	7.2*			3.4*	3.4*	
	SLC			8.2*	8.2*	5.3*	7.2*			3.4*	3.4*	7.4
	WLC			8.2*	8.2*	5.3*	7.2*			3.4*	3.4*	
4.5	NLC ¹⁾	14.4	14.5*	8.0	9.8*	5.3	7.6*	3.4	6.1*	2.9	3.4*	
	SLC	14.5*	14.5*	8.0	9.8*	5.3	7.6*	3.4	6.1*	2.9	3.4*	8.0
	WLC	14.5*	14.5*	8.0	9.8*	5.3	7.6*	3.4	6.1*	2.9	3.4*	
3.0	NLC ¹⁾	13.6	15.9*	7.7	10.7*	5.2	7.9*	3.3	6.0	2.6	3.6*	
	SLC	15.2*	15.9*	8.6*	10.7*	5.8	7.9*	3.8	6.1	3.0	3.6*	8.4
	WLC	15.9*	15.9*	9.0	10.7*	6.1	7.9*	4.0	6.1	3.2	3.6*	
1.5	NLC ¹⁾	13.4	16.2*	7.7	10.8*	4.9	7.9*	3.2	5.9	2.4	3.9*	
	SLC	15.1*	16.2*	8.5	10.8*	5.6	7.9*	3.6	6.0	2.8	3.9*	8.5
	WLC	15.9	16.2*	8.9	10.8*	5.9	7.9*	3.9	6.0	3.1	3.9*	
0	NLC ¹⁾	16.2*	16.2*	9.7	10.8*	6.6*	7.9*	4.5	6.2*	3.5	3.9*	
	SLC	13.0	17.1*	7.1	10.8*	4.5	7.9*	3.0	5.7	2.5	4.4*	8.3
	WLC	15.3	17.1*	8.2	10.8*	5.2	7.9*	3.5	5.8	2.9	4.4*	
-1.5	NLC ¹⁾	12.2	17.4*	6.7	11.1*	4.2	7.9*	2.8	4.9*	2.7	4.0*	
	SLC	14.6	17.4*	7.8	11.1*	4.8	8.0*	3.3	4.9*	3.1	4.0*	7.8
	WLC	15.8	17.4*	8.3	11.1*	5.2	8.0*	3.5	4.9*	3.3	4.0*	
-3.0	NLC ¹⁾	17.4*	17.4*	9.4	11.1*	5.8	8.0*	4.0	4.9*	3.8	4.0*	
	SLC	12.0	17.3*	6.2	10.8*	4.9	6.0*	2.9	2.9*	2.9	2.9*	6.9
	WLC	14.4	17.3*	7.3	10.4*	4.6	6.0*	2.9	2.9*	2.9	2.9*	
-4.5	NLC ¹⁾	15.6	17.3*	7.8	10.4*	4.9	6.0*					
	SLC	17.3*	17.3*	8.9	10.4*	5.6	6.0*					4.1
	WLC	9.7*	9.7*							5.6*	5.6*	
-6.0	NLC ¹⁾	9.7*	9.7*							5.6*	5.6*	
	SLC	9.7*	9.7*							5.6*	5.6*	
	WLC	9.7*	9.7*							5.6*	5.6*	

Stick 2.70 m

m	Under-carriage	3.0 m		4.5 m		6.0 m		7.5 m		9.0 m		m		
		LC	WLC	LC	WLC	LC	WLC	LC	WLC	LC	WLC			
10.5	NLC ¹⁾													
	SLC													
	WLC													
9.0	NLC ¹⁾													
	SLC			4.7*	4.7*							3.6*	3.6*	4.9
	WLC			4.7*	4.7*							3.6*	3.6*	
7.5	NLC ¹⁾													
	SLC			6.3*	6.3*	4.9*	4.9*					3.1*	3.1*	6.6
	WLC			6.3*	6.3*	4.9*	4.9*					3.1*	3.1*	
6.0	NLC ¹⁾													
	SLC			7.1*	7.1*	5.3	6.6*	3.4	3.8*			3.0*	3.0*	7.7
	WLC			7.1*	7.1*	5.3	6.6*	3.4	3.8*			3.0*	3.0*	
4.5	NLC ¹⁾	13.0*	13.0*	8.0	9.5*	5.3	7.4*	3.5	6.1*	2.7	3.0*			
	SLC	13.0*	13.0*	8.9	9.5*	5.9	7.4*	3.9	6.1*	3.0*	3.0*		8.3	
	WLC	13.0*	13.0*	9.3	9.5*	6.2	7.4*	4.2	6.1*	3.0*	3.0*			
3.0	NLC ¹⁾	13.7	16.1*	7.7	10.5*	5.3	7.8*	3.4	6.0	2.4	3.1*			
	SLC	15.3*	16.1*	8.6	10.5*	5.8	7.8*	3.9	6.1	2.8	3.1*		8.7	
	WLC	16.1	16.1*	9.0*	10.5*	6.1	7.8*	4.1	6.1*	3.0	3.1*			
1.5	NLC ¹⁾	16.1*	16.1*	9.8	10.5*	6.6	7.8*	4.6	6.2*	3.1	3.1*			
	SLC	13.4*	16.0*	7.6	10.8*	5.0*	7.9*	3.2	5.9	2.3	3.3*			
	WLC	15.0	16.0*	8.4	10.8*	5.7	7.9*	3.7	6.0	2.7	3.3*			
0	NLC ¹⁾	15.8	16.0*	8.8	10.8*	6.0	7.9*	3.9	6.0	2.9	3.3*			
	SLC	16.0*	16.0*	9.6	10.8*	6.5	7.9*	4.4	6.1*	3.3	3.3*			
	WLC	13.1	16.9*	7.2	10.7*	4.6	7.8*	3.0	5.7	2.3	3.8*			
-1.5	NLC ¹⁾	15.1*	16.9*	8.3	10.7*	5.3	7.8*	3.5	5.8	2.7	3.8*			
	SLC	15.9	16.9*	8.8	10.7*	5.6	7.8*	3.7	5.8	2.9	3.8*		8.6	
	WLC	16.9*	16.9*	9.7*	10.7*	6.3	7.8*	4.2	6.1*	3.3	3.8*			
-3.0	NLC ¹⁾	12.3	17.2*	6.7	10.9*	4.2	8.0*	2.8	5.4*	2.5	3.9*			
	SLC	14.6	17.2*	7.8	10.9*	4.9	8.0*	3.3	5.4*	2.9	3.9*		8.1	
	WLC	15.9	17.2*	8.3	10.9*	5.2	8.0*	3.5	5.4*	3.1	3.9*			
-4.5	NLC ¹⁾	17.2*	17.2*	9.4	10.9*	5.9	8.0*	4.0	5.4*	3.6	3.9*			
	SLC	12.0	17.5*	6.3	10.8*	4.9	6.7*	2.9	2.9*	2.9	2.9*		7.3	
	WLC	14.3	17.5*	7.3	10.8*	4.6	6.7*	2.9	2.9*	2.9	2.9*			
-6.0	NLC ¹⁾	15.5	17.5*	7.8	10.8*	4.9	6.7*	2.9	2.9*	2.9	2.9*			
	SLC	17.5*	17.5*	8.9	10.8*	5.6	6.7*						5.1	
	WLC	11.6	11.9*	6.1	6.2*					4.2*	4.2*			

Stick 3.00 m

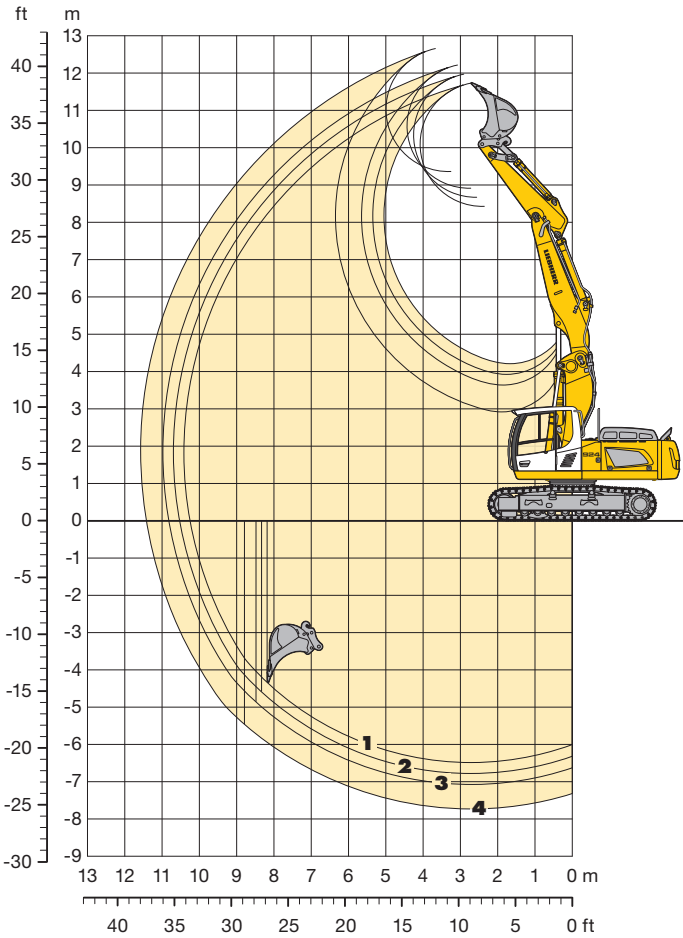
m	Under-carriage	3.0 m		4.5 m		6.0 m		7.5 m		9.0 m		m
		LC	WLC	LC	WLC	LC	WLC	LC	WLC	LC	WLC	
10.5	NLC ¹⁾											
	SLC											
	WLC											
9.0	NLC ¹⁾			4.9*	4.9*					3.2*	3.2*	
	SLC			4.9*	4.9*					3.2*	3.2*	5.4
	WLC			4.9*	4.9*					3.2*	3.2*	
7.5	NLC ¹⁾					5.0*	5.0*			2.8*	2.8*	
	SLC			5.8*	5.8*	5.0*	5.0*			2.8*	2.8*	7.0
	WLC			5.8*	5.8*	5.0*	5.0*			2.8*	2.8*	
6.0	NLC ¹⁾			6.3*	6.3*	5.4	6.1*	3.5	4.3*	2.6*	2.6*	
	SLC			6.3*	6.3*	5.9	6.1*	4.0	4.3*	2.6*	2.6*	8.0
	WLC			6.3*	6.3*	6.1*	6.1*	4.3*	4.3*	2.6*	2.6*	
4.5	NLC ¹⁾	9.0*	9.0*	8.0	8.6*	5.3*	7.2*	3.5	5.9*	2.5	2.6*	
	SLC	9.0*	9.0*	8.6*	8.6*	5.9*	7.2*	4.0	5.9*	2.6*	2.6*	8.6
	WLC	9.0*	9.0*	8.6*	8.6*	6.2	7.2*	4.2	5.9*	2.6*	2.6*	
3.0	NLC ¹⁾	13.7	16.2*	7.7	10.2*	5.2	7.6*	3.4	6.0	2.3	2.7*	
	SLC	15.3*	16.2*	8.5	10.2*	5.8	7.6*	3.9	6.0*	2.6	2.7*	9.0
	WLC	16.2*	16.2*	9.0	10.2*	6.0*	7.6*	4.1	6.0	2.7	2.7*	
1.5	NLC ¹⁾	13.3	15.9*	7.5	10.7*	5.1	7.8*	3.3	5.9	2.2	3.2*	
	SLC	14.9	15.9*	8.4	10.7*	5.7	7.8*	3.7	6.0*	2.5	3.2*	9.0
	WLC	15.7	15.9*	8.8	10.7*	6.0*	7.8*	4.0	6.0	2.7	3.2*	
0	NLC ¹⁾	15.9*	15.9*	9.6	10.7*	6.5	7.8*	4.5	6.1*	3.1	3.2*	
	SLC	13.3	16.6*	7.3	10.6*	4.7	7.7*	3.0	5.8	2.1	3.3*	
	WLC	15.0	16.6*	8.3	10.6*	5.4	7.7*	3.5	5.8	2.5	3.3*	8.9
-1.5	NLC ¹⁾	15.8*	16.6*	8.8	10.6*	5.7	7.7*	3.8	5.8	2.7	3.3*	
	SLC	16.6*	16.6*	9.6*	10.6*	6.4	7.7*	4.2	6.1*	3.1	3.3*	8.4
	WLC	12.3	17.0*	6.7	10.8*	4.3	7.9*	2.8	5.6	2.3	3.8*	
-3.0	NLC ¹⁾	14.6	17.0*	7.8	10.8*	4.9	7.9*	3.3	5.6	2.7	3.8*	
	SLC	15.9	17.0*	8.3	10.8*	5.3	7.9*	3.5	5.6	2.9	3.8*	8.4
	WLC	17.0*	17.0*	9.5	10.8*	6.0	7.9*	4.0	5.7*	3.3	3.8*	
-4.5	NLC ¹⁾	11.9	17.4*	6.3	11.0*	3.9	7.2*	2.7	3.4*	2.7	3.0*	
	SLC	14.2	17.4*	7.3	11.0*	4.6	7.2*	3.2	3.4*	3.0*	3.0*	7.6
	WLC	15.5	17.4*	7.9	11.0*	4.9	7.2*	3.4*	3.4*	3.0*	3.0*	
-6.0	NLC ¹⁾	17.4*	17.4*	9.0	11.0*	5.6	7.2*	3.4*	3.4*			
	SLC	11.5	13.7*	6.0	7.6*					3.4*	3.4*	5.8
	WLC	13.7*	13.7*	7.0	7.6*					3.4*	3.4*	

Stick 3.70 m

m	Under-carriage	3.0 m		4.5 m		6.0 m		7.5 m		9.0 m		m		
		LC	WLC	LC	WLC	LC	WLC	LC	WLC	LC	WLC			
10.5	NLC ¹⁾													
	SLC													
	WLC													
9.0	NLC ¹⁾													
	SLC					3.1*	3.1*					3.1*	3.1*	4.0
	WLC					3.1*	3.1*				</			

Backhoe Bucket

with Two-piece Boom 4.00 m and Heavy Counterweight



Digging Envelope with Quick Coupler

		1	2	3	4
Stick length	m	2.40	2.70	3.00	3.70
Max. digging depth	m	6.50	6.80	7.05	7.70
Max. reach at ground level	m	10.25	10.55	10.80	11.40
Max. dump height	m	8.45	8.65	8.90	9.35
Max. teeth height	m	11.75	11.95	12.20	12.65

Digging Forces without Quick Coupler

		1	2	3	4
Digging force ISO	kN	132	121	112	96
	t	13.5	12.3	11.4	9.8
Breakout force	kN	178	178	178	178
	t	18.1	18.1	18.1	18.1

with Quick Coupler

Digging force ISO	kN	125	115	107	92
	t	12.7	11.7	10.9	9.4
Breakout force	kN	153	153	153	153
	t	15.6	15.6	15.6	15.6

Operating Weight and Ground Pressure

Operating weight includes basic machine with heavy counterweight, two-piece boom 4.00 m, stick 2.40 m, quick coupler 48 and bucket 0.95 m³.

Undercarriage		NLC			SLC		
Pad width	mm	500	600	750	500	600	750
Weight	kg	25,800	26,050	26,650	25,900	26,150	26,750
Ground pressure	kg/cm ²	0.65	0.55	0.45	0.66	0.55	0.45

Undercarriage		LC			WLC		
Pad width	mm	500	600	750	500	600	750
Weight	kg	25,950	26,200	26,800	26,600	26,850	27,600
Ground pressure	kg/cm ²	0.66	0.55	0.45	0.64	0.54	0.44

Buckets Machine stability per ISO 10567* (75% of tipping capacity)

Cutting width mm	Capacity ISO 7451 m ³	Weight kg	NLC-Undercarriage				SLC-Undercarriage				LC-Undercarriage				WLC-Undercarriage			
			Stick length (m)				Stick length (m)				Stick length (m)				Stick length (m)			
			2.40	2.70	3.00	3.70	2.40	2.70	3.00	3.70	2.40	2.70	3.00	3.70	2.40	2.70	3.00	3.70
850 ¹⁾	0.75	620	□	□	□	□	□	□	□	□	□	□	□	□	□	□	□	□
1,050 ¹⁾	0.95	700	□	□	△	△	□	□	□	△	□	□	□	□	□	□	□	□
1,250 ¹⁾	1.15	780	△	△	■	■	□	□	△	■	□	□	□	△	□	□	□	△
1,400 ¹⁾	1.35	860	■	■	▲	▲	△	△	■	■	△	△	△	■	□	□	△	■
1,500 ¹⁾	1.45	900	■	▲	▲	▲	■	■	■	▲	△	△	■	■	□	△	△	■
1,600 ¹⁾	1.55	940	▲	▲	▲	▲	■	■	▲	▲	■	■	■	▲	△	△	■	▲
850 ²⁾	0.75	630	□	□	□	△	□	□	□	□	□	□	□	□	□	□	□	□
1,050 ²⁾	0.95	710	△	△	△	■	□	□	□	△	□	□	□	△	□	□	□	□
1,250 ²⁾	1.15	790	■	■	■	▲	△	△	△	■	□	□	△	■	□	□	□	△
1,400 ²⁾	1.35	870	■	▲	▲	▲	■	■	■	▲	△	△	■	▲	□	△	△	■
1,500 ²⁾	1.45	910	▲	▲	▲	▲	■	■	■	▲	■	■	■	▲	△	△	△	▲
1,600 ²⁾	1.55	950	▲	▲	▲	▲	■	▲	▲	▲	■	■	▲	▲	△	△	■	▲

* Indicated loads are based on ISO 10567 max. stick length, lifted 360° on firm

¹⁾ Standard bucket for direct mounting with teeth Z 40

²⁾ Standard bucket for mounting to quick coupler with teeth Z 40

Other backhoes available on request

Max. material weight □ = ≤ 1.8 t/m³, △ = ≤ 1.5 t/m³, ■ = ≤ 1.2 t/m³, ▲ = not authorized

Lift Capacities

with Two-piece Boom 4.00 m and Heavy Counterweight

Stick 2.40 m

m	Under-carriage	3.0 m		4.5 m		6.0 m		7.5 m		9.0 m		m
		LC	WLC	LC	WLC	LC	WLC	LC	WLC	LC	WLC	
10.5	NLC ¹⁾											
	SLC											
	WLC											
9.0	NLC ¹⁾			5.9*	5.9*					3.9*	3.9*	5.3
	SLC			5.9*	5.9*					3.9*	3.9*	
	WLC			5.9*	5.9*					3.9*	3.9*	
7.5	NLC ¹⁾			7.3*	7.3*	5.2	6.1*			3.5*	3.5*	6.9
	SLC			7.3*	7.3*	5.8	6.1*			3.5*	3.5*	
	WLC			7.3*	7.3*	6.1*	6.1*			3.5*	3.5*	
6.0	NLC ¹⁾	8.7*	8.7*	8.1	8.9*	5.3	7.1*	3.4	5.3*	3.0	3.4*	7.9
	SLC	8.7*	8.7*	8.9*	8.9*	6.2*	7.1*	4.1	5.3*	3.4*	3.4*	
	WLC	8.7*	8.7*	8.9*	8.9*	6.2*	7.1*	4.6	5.3*	3.4*	3.4*	
4.5	NLC ¹⁾	13.8	15.0*	7.8	9.7*	5.2	7.4*	3.4	6.0*	2.5	3.4*	8.6
	SLC	15.0*	15.0*	8.6	9.7*	5.8	7.4*	3.9	6.0*	2.9	3.4*	
	WLC	15.0*	15.0*	9.0	9.7*	6.0	7.4*	4.1	6.0*	3.1	3.4*	
3.0	NLC ¹⁾	13.1	14.3*	7.5	10.5*	5.1	7.7*	3.3	5.9	2.2	3.6*	8.9
	SLC	14.3*	14.3*	8.3	10.5*	5.6	7.7*	3.8	5.9	2.6	3.6*	
	WLC	14.3*	14.3*	8.7	10.5*	5.9	7.7*	4.1	5.9*	2.8	3.6*	
1.5	NLC ¹⁾	13.0	15.0*	7.4*	10.5*	5.0	7.7*	3.2	5.8*	2.1	3.9*	9.0
	SLC	14.6	15.0*	8.2	10.5*	5.6*	7.7*	3.7	5.9*	2.5	3.9*	
	WLC	15.0*	15.0*	8.6*	10.5*	5.9	7.7*	3.9	5.9*	2.7	3.9*	
0	NLC ¹⁾	12.5	16.5*	7.0	10.5*	4.6	7.6*	2.9	5.7	2.1	4.2*	8.8
	SLC	14.8	16.5*	8.0	10.5*	5.3	7.6*	3.4	5.8	2.5	4.2*	
	WLC	15.6*	16.5*	8.6	10.5*	5.6	7.6*	3.7	5.8	2.7	4.2*	
-1.5	NLC ¹⁾	11.9	17.0*	6.5	10.7*	4.2	7.8*	2.8	5.5*	2.3	3.6*	8.3
	SLC	14.2	17.0*	7.6	10.7*	4.8	7.8*	3.2	5.6	2.7	3.6*	
	WLC	15.5	17.0*	8.1	10.7*	5.2	7.8*	3.5	5.6	2.9	3.6*	
-3.0	NLC ¹⁾	11.7	17.3*	6.2	10.8*	3.9	7.0*	2.7	2.8*	2.7	2.7*	7.5
	SLC	14.1	17.3*	7.2	10.8*	4.5*	7.0*	2.8*	2.8*	2.7	2.7*	
	WLC	15.3	17.3*	7.8	10.8*	4.8	7.0*	2.8*	2.8*	2.7	2.7*	
-4.5	NLC ¹⁾	11.5	13.1*	5.9	7.1*					3.6*	3.6*	5.6
	SLC	13.1*	13.1*	7.0	7.1*					3.6*	3.6*	
	WLC	13.1*	13.1*	7.1*	7.1*					3.6*	3.6*	
-6.0	NLC ¹⁾											
	SLC											
	WLC											

Stick 2.70 m

m	Under-carriage	3.0 m		4.5 m		6.0 m		7.5 m		9.0 m		m
		LC	WLC	LC	WLC	LC	WLC	LC	WLC	LC	WLC	
10.5	NLC ¹⁾											
	SLC											
	WLC											
9.0	NLC ¹⁾			5.8*	5.8*							5.8
	SLC			5.8*	5.8*							
	WLC			5.8*	5.8*							
7.5	NLC ¹⁾			6.5*	6.5*	5.3	5.9*			3.1*	3.1*	7.3
	SLC			6.5*	6.5*	5.9	5.9*			3.1*	3.1*	
	WLC			6.5*	6.5*	5.9*	5.9*			3.1*	3.1*	
6.0	NLC ¹⁾			7.6*	7.6*	5.3	6.9*	3.5*	5.5*			8.3
	SLC			7.6*	7.6*	6.2	6.9*	4.2	5.5*			
	WLC			7.6*	7.6*	6.8*	6.9*	4.7	5.5*			
4.5	NLC ¹⁾	14.0	14.3*	7.8*	9.5*	5.2	7.2*	3.5	5.9*			8.9
	SLC	14.3*	14.3*	8.6	9.5*	5.7*	7.2*	4.0	5.9*			
	WLC	14.3*	14.3*	9.1	9.5*	6.0*	7.2*	4.2	5.9*			
3.0	NLC ¹⁾	13.1	14.5*	7.5*	10.3*	5.1	7.6*	3.4	5.8*	2.2	4.3*	9.2
	SLC	14.5*	14.5*	8.3*	10.3*	5.6	7.6*	3.9	5.9*	2.6	4.3*	
	WLC	14.5*	14.5*	8.7*	10.3*	5.9	7.6*	4.1	5.9*	2.8	4.3*	
1.5	NLC ¹⁾	12.9*	14.8*	7.3	10.4*	5.0	7.6*	3.2	5.8*	2.1	4.2*	9.3
	SLC	14.5*	14.8*	8.1	10.4*	5.6	7.6*	3.7	5.8*	2.5	4.3*	
	WLC	14.8*	14.8*	8.5	10.4*	5.8	7.6*	4.0	5.8*	2.7	4.3*	
0	NLC ¹⁾	12.7	16.1*	7.0	10.4*	4.6	7.6*	3.0	5.7	2.0	4.1*	9.1
	SLC	14.7*	16.1*	8.1	10.4*	5.3	7.6*	3.5	5.8	2.4	4.2*	
	WLC	14.8*	16.1*	8.6	10.4*	5.6	7.6*	3.7	5.8	2.6	4.2*	
-1.5	NLC ¹⁾	11.9	16.8*	6.5	10.6*	4.2	7.7*	2.8	5.5	2.1	3.5*	8.6
	SLC	14.2	16.8*	7.6	10.6*	4.9	7.7*	3.2	5.6	2.5	3.5*	
	WLC	15.5	16.8*	8.1	10.6*	5.2	7.7*	3.5	5.6	2.8	3.5*	
-3.0	NLC ¹⁾	11.7	17.2*	6.3	11.0*	3.9	7.4*	2.6	4.0*			7.9
	SLC	14.0	17.2*	7.3	11.0*	4.5	7.4*	3.1	4.0*			
	WLC	15.2	17.2*	7.9	11.0*	4.9	7.4*	3.3	4.0*			
-4.5	NLC ¹⁾	11.5	14.6*	5.9	8.3*	3.8	3.8*			3.0*	3.0*	6.2
	SLC	13.8	14.6*	6.9	8.3*	3.8*	3.8*			3.0*	3.0*	
	WLC	14.6*	14.6*	8.3*	8.3*	3.8*	3.8*			3.0*	3.0*	
-6.0	NLC ¹⁾											
	SLC											
	WLC											

Stick 3.00 m

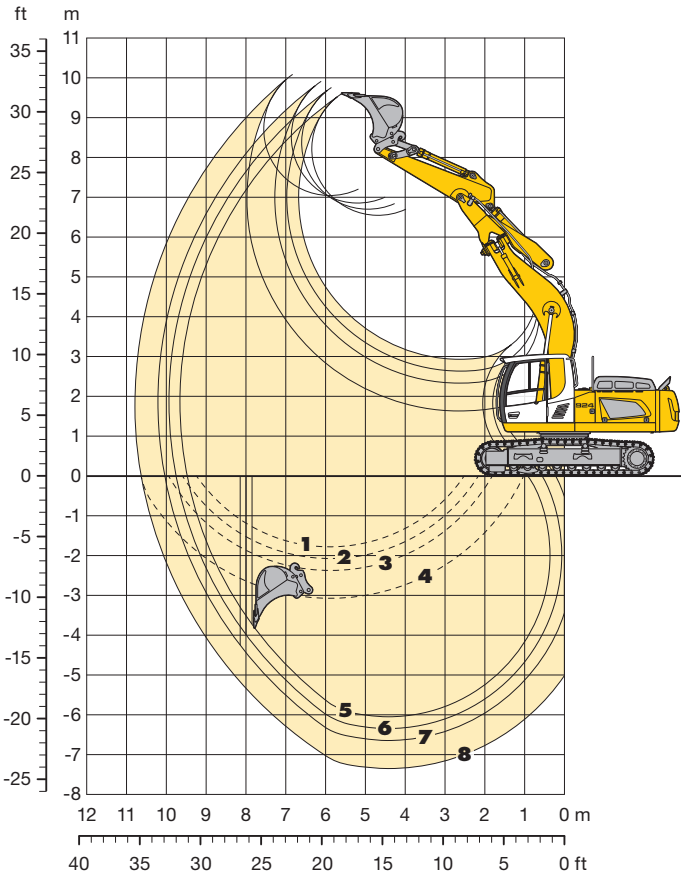
m	Under-carriage	3.0 m		4.5 m		6.0 m		7.5 m		9.0 m		m
		LC	WLC	LC	WLC	LC	WLC	LC	WLC	LC	WLC	
10.5	NLC ¹⁾									4.0*	4.0*	3.7
	SLC									4.0*	4.0*	
	WLC									4.0*	4.0*	
9.0	NLC ¹⁾			5.5*	5.5*	3.6*	3.6*			3.0*	3.0*	6.2
	SLC			5.5*	5.5*	3.6*	3.6*			3.0*	3.0*	
	WLC			5.5*	5.5*	3.6*	3.6*			3.0*	3.0*	
7.5	NLC ¹⁾			5.9*	5.9*	5.3	5.5*	3.2*	3.2*	2.7*	2.7*	7.6
	SLC			5.9*	5.9*	5.5*	5.5*	3.2*	3.2*	2.7*	2.7*	
	WLC			5.9*	5.9*	5.5*	5.5*	3.2*	3.2*	2.7*	2.7*	
6.0	NLC ¹⁾			6.6*	6.6*	5.3	6.5*	3.6	5.4*	2.6	2.6*	8.6
	SLC			6.6*	6.6*	5.9	6.5*	4.0	5.4*	2.6*	2.6*	
	WLC			6.6*	6.6*	6.5*	6.5*	4.7	5.4*	2.6*	2.6*	
4.5	NLC ¹⁾	13.6*	13.6*	7.8	9.2*	5.2	7.0*	3.6	5.8*	2.3	3.4*	9.2
	SLC	13.6*	13.6*	8.7	9.2*	5.7	7.0*	4.0	5.8*	2.7	3.4*	
	WLC	13.6*	13.6*	9.1	9.2*	6.0	7.0*	4.3	5.8*	2.9	3.4*	
3.0	NLC ¹⁾	13.1*	14.7*	7.4	10.1*	5.0	7.4*	3.5	5.8*	2.2	4.3*	9.5
	SLC	14.7*	14.7*	8.3	10.1*	5.6	7.4*	3.9	5.9	2.6	4.4*	
	WLC	14.7*	14.7*	8.7	10.1*	5.8	7.4*	4.2	5.9	2.8	4.4*	
1.5	NLC ¹⁾	12.8*	14.6*	7.5*	10.4*	5.0	7.5*	3.3	5.7	2.1	4.2*	9.5
	SLC	14.4	14.6*	8.1	10.4*	5.5	7.5*	3.8	5.8*	2.5	4.3*	
	WLC	14.6*	14.6*	8.2	10.4*	5.7	7.5*	4.0	5.8*	2.7	4.3*	
0	NLC ¹⁾	12.8	15.8*	7.1	10.3*	4.6	7.5*	3.0	5.8	2.0	4.1*	9.4
	SLC	14.5	15.8*	8.1*	10.3*	5.3	7.5*	3.5	5.8*	2.4	4.2*	
	WLC	15.3	15.8*	8.5*	10.3*	5.7	7.5*	3.8	5.8	2.6	4.2*	
-1.5	NLC ¹⁾	11.9	16.6*	6.5	10.5*	4.3	7.6*	2.8	5.5	1.9	3.4*	8.9
	SLC	14.3	16.6*	7.6	10.5*	5.0	7.6*	3.3	5.6	2.3	3.4*	
	WLC	15.5	16.6*	8.1	10.5*	5.3	7.6*	3.5	5.6	2.5	3.4*	
-3.0	NLC ¹⁾	11.6	17.1*	6.3	10.9*	3.9	7.6*	2.6	4.7*	2.2	2.7*	8.2
	SLC	13.9	17.1*	7.3	10.9*	4.5	7.6*	3.1	4.7*	2.7	2.7*	
	WLC	15.2	17.1*	7.9	10.9*	4.9	7.6*	3.3	4.7*	2.7	2.7*	
-4.5	NLC ¹⁾	11.5	15.8*	5.9	9.2*	3.7	5.0*			2.6*	2.6*	6.8
	SLC	13.8	15.8*	6.9	9.2*	4.4	5.0*			2.6*	2.6*	
	WLC	15.0	15.8*	7.4	9.2*	4.7	5.0*			2.6*	2.6*	
-6.0	NLC ¹⁾											
	SLC											
	WLC											

Stick 3.70 m

m	Under-carriage	3.0 m		4.5 m		6.0 m		7.5 m		9.0 m		m
		LC	WLC	LC	WLC	LC	WLC	LC	WLC	LC	WLC	
10.5	NLC ¹⁾			3.7*	3.7*					2.7*	2.7*	5.1
	SLC			3.7*	3.7*					2.7*	2.7*	
	WLC			3.7*	3.7*					2.7*	2.7*	
9.0	NLC ¹⁾					3.9*	3.9*			2.2*	2.2*	7.1
	SLC					3.9*	3.9*			2.2*	2.2*	
	WLC					3.9*	3.9*			2.2*	2.2*	
7.5	NLC ¹⁾			4.6*	4.6*	3.6	3.7*			2.1*	2.1*	8.4
	SLC			4.6*	4.6*	3.7*	3.7*			2.1*	2.1*	
	WLC			4.6*	4.6*	3.7*	3.7*			2.1*	2.1*	
6.0	NLC ¹⁾			5.1*	5.1*	3.7	4.7*	2.4	2.7*	2.0*	2.	

Backhoe Bucket

with Offset Mono Boom 5.70 m and Heavy Counterweight



Digging Envelope with Quick Coupler

		5	6	7	8
Stick length	m	2.40	2.70	3.00	3.70
Max. digging depth	m	6.05	6.35	6.65	7.35
Max. reach at ground level	m	9.50	9.75	10.05	10.65
Max. dump height	m	6.55	6.70	6.85	7.05
Max. teeth height	m	9.60	9.75	9.90	10.10

1 Stick 2.40 m, 2 Stick 2.70 m
3 Stick 3.00 m, 4 Stick 3.70 m
at max. attachment offset with vertical ditch walls

Digging Forces without Quick Coupler

		5	6	7	8
Digging force ISO	kN	132	121	112	96
	t	13.5	12.3	11.4	9.8
Breakout force	kN	178	178	178	178
	t	18.1	18.1	18.1	18.1

with Quick Coupler

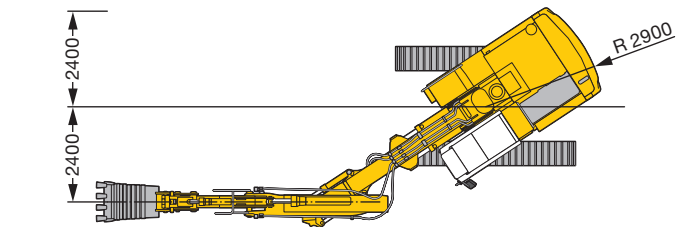
Digging force ISO	kN	125	115	107	92
	t	12.7	11.7	10.9	9.4
Breakout force	kN	153	153	153	153
	t	15.6	15.6	15.6	15.6

Operating Weight and Ground Pressure

Operating weight includes basic machine with heavy counterweight, offset mono boom 5.70 m, stick 2.40 m, quick coupler 48 and bucket 0.95 m³.

		NLC			SLC		
		500	600	750	500	600	750
Undercarriage	mm	500	600	750	500	600	750
Weight	kg	25,450	25,700	26,300	25,550	25,800	26,400
Ground pressure	kg/cm ²	0.64	0.54	0.44	0.65	0.55	0.45

		LC			WLC		
		500	600	750	500	600	750
Undercarriage	mm	500	600	750	500	600	750
Weight	kg	25,600	25,850	26,450	26,250	26,500	27,250
Ground pressure	kg/cm ²	0.65	0.55	0.45	0.63	0.53	0.44



Buckets Machine stability per ISO 10567* (75% of tipping capacity)

Cutting width mm	Capacity ISO 7451 m ³	Weight kg	NLC-Undercarriage				SLC-Undercarriage				LC-Undercarriage				WLC-Undercarriage			
			Stick length (m)				Stick length (m)				Stick length (m)				Stick length (m)			
			2.40	2.70	3.00	3.70	2.40	2.70	3.00	3.70	2.40	2.70	3.00	3.70	2.40	2.70	3.00	3.70
850 ¹⁾	0.75	620	□	□	□	□	□	□	□	□	□	□	□	□	□	□	□	
1,050 ¹⁾	0.95	700	□	□	□	△	□	□	□	□	□	□	□	□	□	□	□	
1,250 ¹⁾	1.15	780	□	△	△	■	□	□	□	△	□	□	□	△	□	□	△	
1,400 ¹⁾	1.35	860	△	■	■	▲	□	△	△	■	□	□	△	■	□	□	■	
1,500 ¹⁾	1.45	900	■	■	■	▲	△	△	△	■	□	△	△	■	□	□	▲	
1,600 ¹⁾	1.55	940	■	■	▲	▲	△	■	■	▲	△	△	■	▲	□	□	▲	
850 ²⁾	0.75	630	□	□	□	□	□	□	□	□	□	□	□	□	□	□	□	
1,050 ²⁾	0.95	710	□	□	□	△	□	□	□	□	□	□	□	□	□	□	□	
1,250 ²⁾	1.15	790	△	△	△	■	□	□	□	△	□	□	□	△	□	□	△	
1,400 ²⁾	1.35	870	■	■	■	▲	△	△	△	■	□	△	△	■	□	□	■	
1,500 ²⁾	1.45	910	■	■	▲	▲	△	△	■	▲	△	△	△	▲	□	□	▲	
1,600 ²⁾	1.55	950	■	▲	▲	▲	■	■	■	▲	△	■	■	▲	□	△	▲	

* Indicated loads are based on ISO 10567 max. stick length, lifted 360° on firm

¹⁾ Standard bucket for direct mounting with teeth Z 40 ²⁾ Standard bucket for mounting to quick coupler with teeth Z 40

Other backhoes available on request

Poids spécifique maxi des matériaux □ = ≤ 1,8 t/m³, △ = ≤ 1,5 t/m³, ■ = ≤ 1,2 t/m³, ▲ = non autorisé

Lift Capacities

with Offset Mono Boom 5.70 m and Heavy Counterweight

Stick 2.40 m

m	Under-carriage	3.0 m		4.5 m		6.0 m		7.5 m		9.0 m		m
		LC	WLC	LC	WLC	LC	WLC	LC	WLC	LC	WLC	
10.5	NLC ¹⁾ SLC LC WLC											
9.0	NLC ¹⁾ SLC LC WLC											
7.5	NLC ¹⁾ SLC LC WLC									3.6*	3.6*	5.8
6.0	NLC ¹⁾ SLC LC WLC					5.0	5.5*			3.4*	3.4*	7.0
4.5	NLC ¹⁾ SLC LC WLC			7.2*	7.2*	4.7	5.9*	3.2	4.7*	3.0	3.4*	7.7
3.0	NLC ¹⁾ SLC LC WLC	11.0*	11.0*	6.6	8.7*	4.3	6.6*	3.0	5.5*	2.6	3.8*	8.1
1.5	NLC ¹⁾ SLC LC WLC			5.8	9.9*	3.9	7.2*	2.8	5.5	2.4	4.0*	8.2
0	NLC ¹⁾ SLC LC WLC	8.5*	8.5*	5.4	10.3*	3.7	7.5*	2.7	5.4	2.4	4.7*	8.0
-1.5	NLC ¹⁾ SLC LC WLC	10.0	13.0*	5.3	9.8*	3.5	7.3*			2.6	5.3	7.5
-3.0	NLC ¹⁾ SLC LC WLC	11.4*	11.4*	6.4	8.5*	4.6	6.3*			3.2	5.5*	6.6
-4.5	NLC ¹⁾ SLC LC WLC			5.8	5.8*					4.9	5.0*	5.1
-6.0	NLC ¹⁾ SLC LC WLC											

Stick 2.70 m




m	Under-carriage	3.0 m		4.5 m		6.0 m		7.5 m		9.0 m		m
		LC	WLC	LC	WLC	LC	WLC	LC	WLC	LC	WLC	
10.5	NLC ¹⁾ SLC LC WLC											
9.0	NLC ¹⁾ SLC LC WLC											
7.5	NLC ¹⁾ SLC LC WLC							3.9*	3.9*			6.2
6.0	NLC ¹⁾ SLC LC WLC					5.0	5.2*			3.0*	3.0*	7.4
4.5	NLC ¹⁾ SLC LC WLC			4.7	5.7*	4.7	5.7*	3.2	5.1*	2.8	3.0*	8.0
3.0	NLC ¹⁾ SLC LC WLC	12.1	13.3*	6.7	8.3*	4.3	6.4*	3.0	5.3*	2.4	3.1*	8.4
1.5	NLC ¹⁾ SLC LC WLC			6.8*	6.8*	5.9	9.6*	3.9	7.0*	2.8	5.5	8.5
0	NLC ¹⁾ SLC LC WLC	8.7*	8.7*	5.4	10.2*	3.6	7.4*	2.6	5.3	2.3	4.0*	8.3
-1.5	NLC ¹⁾ SLC LC WLC	9.9	12.4*	5.2	9.9*	3.5	7.3*	2.6	5.3	2.4	4.9*	7.8
-3.0	NLC ¹⁾ SLC LC WLC	10.1	12.1*	5.3	8.8*	3.5	6.5*	2.9	5.3*	2.9	4.0*	6.9
-4.5	NLC ¹⁾ SLC LC WLC			8.6*	8.6*	5.6	6.5*	4.2	6.5*	4.2	5.0*	5.5
-6.0	NLC ¹⁾ SLC LC WLC											

Stick 3.00 m

m	Under-carriage	3.0 m		4.5 m		6.0 m		7.5 m		9.0 m		m
		LC	WLC	LC	WLC	LC	WLC	LC	WLC	LC	WLC	
10.5	NLC ¹⁾ SLC LC WLC											
9.0	NLC ¹⁾ SLC LC WLC											
7.5	NLC ¹⁾ SLC LC WLC									2.8*	2.8*	6.6
6.0	NLC ¹⁾ SLC LC WLC					4.9*	4.9*	3.3*	3.3*	2.6*	2.6*	7.7
4.5	NLC ¹⁾ SLC LC WLC			4.8	5.4*	3.2	4.9*	2.6	2.6*	2.6	2.6*	8.3
3.0	NLC ¹⁾ SLC LC WLC	12.3*	12.3*	6.8	7.9*	5.0	6.1*	3.0	5.2*	2.3	2.8*	8.7
1.5	NLC ¹⁾ SLC LC WLC	8.4*	8.4*	5.9	9.3*	3.9	6.8*	2.8	5.5*	2.1	3.0*	8.8
0	NLC ¹⁾ SLC LC WLC	8.9*	8.9*	5.4	10.0*	3.6	7.3*	2.6	5.3	2.1	3.4*	8.6
-1.5	NLC ¹⁾ SLC LC WLC	11.8*	11.8*	6.2	9.9*	4.1	7.3*	3.0	5.3	2.7	4.2*	8.1
-3.0	NLC ¹⁾ SLC LC WLC	9.9	12.7*	5.2	9.0*	3.4	6.6*			2.7	5.1*	7.3
-4.5	NLC ¹⁾ SLC LC WLC			9.5*	9.5*	5.5	7.0*			3.7	4.9*	6.0
-6.0	NLC ¹⁾ SLC LC WLC											

Stick 3.70 m

m	Under-carriage	3.0 m		4.5 m		6.0 m		7.5 m		9.0 m		m
		LC	WLC	LC	WLC	LC	WLC	LC	WLC	LC	WLC	
10.5	NLC ¹⁾ SLC LC WLC											
9.0	NLC ¹⁾ SLC LC WLC											
7.5	NLC ¹⁾ SLC LC WLC									2.1*	2.1*	7.4
6.0	NLC ¹⁾ SLC LC WLC							3.5	3.7*	2.0*	2.0*	8.4
4.5	NLC ¹⁾ SLC LC WLC							4.8*	4.8*	2.0*	2.0*	9.0
3.0	NLC ¹⁾ SLC LC WLC	12.3*	12.3*	7.9	7.9*	5.0	6.1*	3.7	5.2*	2.8*	2.8*	9.3
1.5	NLC ¹⁾ SLC LC WLC	11.2	14.1*	6.2	8.6*	4.1	6.4*	2.8	5.2*	2.0	3.6*	9.4
0	NLC ¹⁾ SLC LC WLC	9.9	10.0*	5.5	9.7*	3.7	7.0*	2.6	5.3	1.9	3.4*	9.2
-1.5	NLC ¹⁾ SLC LC WLC	11.3*	11.3*	6.2	10.0*	4.1	7.2*	2.9	5.2	2.3	3.1*	8.7
-3.0	NLC ¹⁾ SLC LC WLC	9.6	14.0*	5.1	9.5*	3.3	6.9*	2.4	5.1	2.2	4.0*	8.0
-4.5	NLC ¹⁾ SLC LC WLC	10.0	11.4*	5.2	8.0*	3.4	5.9*	4.1	5.9*	2.9	4.8*	6.8
-6.0	NLC ¹⁾ SLC LC WLC											

 Height
  Can be slewed though 360°
  In longitudinal position of undercarriage
  Max. reach
 * Limited by hydr. capacity

The lift capacities on the load hook of the Liebherr quick coupler 48 without attachment are stated in metric tonnes (t), and can be lifted 360° on firm, level supporting surface. Adjacent values are valid for the undercarriage when in the longitudinal position. Capacities are valid for 600 mm wide triple-grouser pads. Indicated loads are based on ISO 10567 standard and do not exceed 75 % of tipping or 87 % of hydraulic capacity (indicated by *) or are limited through the allowed lift capacity of the load hook on the quick coupler (12 t). Without quick coupler the lift capacities will increase by 250 kg, without bucket cylinder, link and lever they increase by an additional 365 kg.

According to European Standard, EN 474-5: In the European Union excavators have to be equipped with an overload warning device, a load diagram and automatic check valves on the hoist cylinders, when they are used for lifting operations which require the use of lifting accessories.

¹⁾ Values are calculated with 500 mm wide triple-grouser pads for the NLC-Undercarriage

Lift Capacities

with Mono Boom 5.70 m and Heavy Counterweight

Stick 2.40 m

m	Under-carriage	3.0 m		4.5 m		6.0 m		7.5 m		9.0 m		m
		LC	WLC	LC	WLC	LC	WLC	LC	WLC	LC	WLC	
10.5	NLC ¹⁾ SLC LC WLC											
9.0	NLC ¹⁾ SLC LC WLC											
7.5	NLC ¹⁾ SLC LC WLC									3.6*	3.6*	5.9
6.0	NLC ¹⁾ SLC LC WLC					5.1	5.5*			3.4*	3.4*	7.1
4.5	NLC ¹⁾ SLC LC WLC			7.1*	7.1*	4.9	6.0*	3.4	4.8*	3.2	3.4*	7.8
3.0	NLC ¹⁾ SLC LC WLC	10.8*	10.8*	7.0	8.8*	4.6	6.8*	3.3	5.8*	2.9	3.6*	8.1
1.5	NLC ¹⁾ SLC LC WLC			6.4	10.4*	4.3	7.5*	3.1	5.8	2.7	4.0*	8.2
0	NLC ¹⁾ SLC LC WLC	8.4*	8.4*	6.1	11.0*	4.1	7.9	3.0	5.7	2.8	4.6*	8.0
-1.5	NLC ¹⁾ SLC LC WLC	11.2	12.9*	6.0	10.7*	4.0	7.8	3.0	5.6	3.0	5.6	7.5
-3.0	NLC ¹⁾ SLC LC WLC	11.4	13.3*	6.1	9.6*	4.1	7.1*	3.2	6.2*	3.5	5.7	6.6
-4.5	NLC ¹⁾ SLC LC WLC	9.7*	9.7*	6.3	7.1*			5.3	6.1*	5.6	6.1*	5.1
-6.0	NLC ¹⁾ SLC LC WLC											

Stick 2.70 m

m	Under-carriage	3.0 m		4.5 m		6.0 m		7.5 m		9.0 m		m
		LC	WLC	LC	WLC	LC	WLC	LC	WLC	LC	WLC	
10.5	NLC ¹⁾ SLC LC WLC											
9.0	NLC ¹⁾ SLC LC WLC											
7.5	NLC ¹⁾ SLC LC WLC							4.0*	4.0*			6.3
6.0	NLC ¹⁾ SLC LC WLC					5.1	5.2*			5.1	5.2*	7.4
4.5	NLC ¹⁾ SLC LC WLC							4.9	5.7*	3.4	5.2*	8.1
3.0	NLC ¹⁾ SLC LC WLC	12.8	13.6*	7.0	8.4*	4.3	7.3*	3.3	5.6*	3.0	3.0*	8.4
1.5	NLC ¹⁾ SLC LC WLC	6.6*	6.6*	6.4	10.1*	4.9	7.3*	3.8	5.9	2.6	3.4*	8.5
0	NLC ¹⁾ SLC LC WLC	8.6*	8.6*	6.0	10.9*	4.1	7.9*	3.0	5.6	2.6	3.9*	8.3
-1.5	NLC ¹⁾ SLC LC WLC	11.0	12.3*	5.9	10.8*	4.0	7.7	2.9	5.6	2.8	4.9*	7.8
-3.0	NLC ¹⁾ SLC LC WLC	11.2	13.9*	6.0	9.8*	4.0	7.3*	3.6	5.9	3.0	3.9*	7.0
-4.5	NLC ¹⁾ SLC LC WLC	10.6*	10.6*	6.2	7.7*			4.6	7.3*	4.6	6.0*	5.6
-6.0	NLC ¹⁾ SLC LC WLC											

Stick 3.00 m

m	Under-carriage	3.0 m		4.5 m		6.0 m		7.5 m		9.0 m		m
		LC	WLC	LC	WLC	LC	WLC	LC	WLC	LC	WLC	
10.5	NLC ¹⁾ SLC LC WLC											
9.0	NLC ¹⁾ SLC LC WLC											
7.5	NLC ¹⁾ SLC LC WLC									2.8*	2.8*	6.7
6.0	NLC ¹⁾ SLC LC WLC							3.4*	3.4*	2.6*	2.6*	7.7
4.5	NLC ¹⁾ SLC LC WLC					5.0	5.4*	3.4	5.0*	2.6*	2.6*	8.4
3.0	NLC ¹⁾ SLC LC WLC	12.4*	12.4*	7.1	7.9*	4.6	6.2*	3.3	5.4*	2.7*	2.7*	8.7
1.5	NLC ¹⁾ SLC LC WLC	8.3*	8.3*	6.4	9.7*	4.3	7.1*	3.1	5.8	2.4	3.0*	8.8
0	NLC ¹⁾ SLC LC WLC	8.8*	8.8*	7.0	10.7*	4.0	7.7*	3.4	5.7	2.8	3.4*	8.6
-1.5	NLC ¹⁾ SLC LC WLC	10.9	11.7*	6.8	10.8*	4.5	7.8	3.3	5.6	2.6	4.1*	8.1
-3.0	NLC ¹⁾ SLC LC WLC	11.0	14.5*	5.9	10.0*	3.9	7.4*	3.0	5.6*	3.0	5.6*	7.3
-4.5	NLC ¹⁾ SLC LC WLC	11.4	11.5*	6.0	8.2*	4.1	5.8*			4.7	5.8*	6.0
-6.0	NLC ¹⁾ SLC LC WLC											

Stick 3.70 m

m	Under-carriage	3.0 m		4.5 m		6.0 m		7.5 m		9.0 m		m
		LC	WLC	LC	WLC	LC	WLC	LC	WLC	LC	WLC	
10.5	NLC ¹⁾ SLC LC WLC											
9.0	NLC ¹⁾ SLC LC WLC											
7.5	NLC ¹⁾ SLC LC WLC									2.1*	2.1*	7.4
6.0	NLC ¹⁾ SLC LC WLC							3.6	3.8*	2.0*	2.0*	8.4
4.5	NLC ¹⁾ SLC LC WLC							3.5	4.4*	2.0*	2.0*	9.0
3.0	NLC ¹⁾ SLC LC WLC	12.1	14.2*	6.9*	6.9*	4.7	5.6*	3.8	4.9*	2.0*	2.0*	9.3
1.5	NLC ¹⁾ SLC LC WLC	12.1	14.2*	6.7	8.8*	4.4	6.6*	3.1	5.4*	2.1*	2.2*	9.4
0	NLC ¹⁾ SLC LC WLC	9.9*	9.9*	6.1	10.2*	4.1	7.4*	2.9	5.6	2.2	3.5*	9.2
-1.5	NLC ¹⁾ SLC LC WLC	10.8	11.2*	5.8	10.7*	3.9	7.7	2.8	5.5	2.2	3.0*	8.8
-3.0	NLC ¹⁾ SLC LC WLC	10.8	14.0*	5.8	10.4*	3.8	7.6	2.8	5.4	2.6	4.0*	8.0
-4.5	NLC ¹⁾ SLC LC WLC	11.1	13.3*	5.8	9.2*	3.9	6.7*			3.2	5.5*	6.9
-6.0	NLC ¹⁾ SLC LC WLC	9.1*	9.1*	6.2	6.4*					5.3	5.6*	5.0

 Height
  Can be slewed though 360°
  In longitudinal position of undercarriage
  Max. reach
 * Limited by hydr. capacity

The lift capacities on the load hook of the Liebherr quick coupler 48 without attachment are stated in metric tonnes (t), and can be lifted 360° on firm, level supporting surface. Adjacent values are valid for the undercarriage when in the longitudinal position. Capacities are valid for 600 mm wide triple-grouser pads. Indicated loads are based on ISO 10567 standard and do not exceed 75% of tipping or 87% of hydraulic capacity (indicated by *) or are limited through the allowed lift capacity of the load hook on the quick coupler (12 t). Without quick coupler the lift capacities will increase by 250 kg, without bucket cylinder, link and lever they increase by an additional 365 kg.

According to European Standard, EN 474-5: In the European Union excavators have to be equipped with an overload warning device, a load diagram and automatic check valves on the hoist cylinders, when they are used for lifting operations which require the use of lifting accessories.

¹⁾ Values are calculated with 500 mm wide triple-grouser pads for the NLC-Undercarriage

Lift Capacities

with Straight Mono Boom 6.00 m and Heavy Counterweight

Stick 2.40 m

m	Under-carriage	3.0 m		4.5 m		6.0 m		7.5 m		9.0 m		m
		LC	WLC	LC	WLC	LC	WLC	LC	WLC	LC	WLC	
10.5	NLC ¹⁾ SLC LC WLC											
9.0	NLC ¹⁾ SLC LC WLC									4.2*	4.2*	4.7
7.5	NLC ¹⁾ SLC LC WLC					5.1	5.3*			3.6*	3.6*	6.5
6.0	NLC ¹⁾ SLC LC WLC					5.0	6.2*	3.4	3.7*	3.4	3.4*	7.6
4.5	NLC ¹⁾ SLC LC WLC	12.1*	12.1*	7.4	8.4*	4.8	6.7*	3.3	5.8*	2.8	3.4*	8.2
3.0	NLC ¹⁾ SLC LC WLC			6.7	9.9*	4.4	7.4*	3.2	5.9	2.6	3.5*	8.6
1.5	NLC ¹⁾ SLC LC WLC			6.1	10.9*	4.2	7.9*	3.0	5.7	2.5	3.8*	8.6
0	NLC ¹⁾ SLC LC WLC			5.9	10.8*	4.0	7.7	2.9	5.6	2.5	4.3*	8.5
-1.5	NLC ¹⁾ SLC LC WLC	10.5*	10.5*	5.9	8.8*	4.0	6.2*	2.9	5.5	2.7	5.1*	8.0
-3.0	NLC ¹⁾ SLC LC WLC	10.0*	10.0*	6.9	8.1*	4.6	6.2*	3.7	4.8*	3.2	4.8*	7.1
-4.5	NLC ¹⁾ SLC LC WLC	10.0*	10.0*	7.4	8.1*	4.9	6.2*	4.4	4.8*	4.1*	4.1*	5.6
-6.0	NLC ¹⁾ SLC LC WLC											

Stick 2.70 m

m	Under-carriage	3.0 m		4.5 m		6.0 m		7.5 m		9.0 m		m	
		LC	WLC	LC	WLC	LC	WLC	LC	WLC	LC	WLC		
10.5	NLC ¹⁾ SLC LC WLC												
9.0	NLC ¹⁾ SLC LC WLC										3.6*	3.6*	5.2
7.5	NLC ¹⁾ SLC LC WLC					5.1	5.4*			3.2*	3.2*	6.9	
6.0	NLC ¹⁾ SLC LC WLC					5.0	6.0*	3.4	3.4*	3.4	3.4*	7.6	
4.5	NLC ¹⁾ SLC LC WLC	7.5	8.0*	7.5	8.0*	4.8	6.5*	3.3	5.6*	2.7	3.0*	8.5	
3.0	NLC ¹⁾ SLC LC WLC	6.8	9.5*	6.8	9.5*	4.5	7.2*	3.2	5.9	2.4	3.1*	8.9	
1.5	NLC ¹⁾ SLC LC WLC	6.1	10.7*	6.1	10.7*	4.2	7.7*	3.0	5.7	2.3	3.3*	8.9	
0	NLC ¹⁾ SLC LC WLC	6.0*	6.0*	5.8	10.8*	3.9	7.7	2.9	5.5	2.3	3.7*	8.7	
-1.5	NLC ¹⁾ SLC LC WLC	9.9*	9.9*	8.3	10.0*	5.5	7.5*	4.0	5.8*	3.5	4.4*	8.3	
-3.0	NLC ¹⁾ SLC LC WLC	10.9*	10.9*	8.8	8.5*	3.9	6.5*	2.9	4.6*	2.9	4.6*	7.5	
-4.5	NLC ¹⁾ SLC LC WLC	5.9*	5.9*	5.9*	5.9*	4.1	4.2*	3.9*	3.9*	3.9*	3.9*	6.2	
-6.0	NLC ¹⁾ SLC LC WLC												

Stick 3.00 m

m	Under-carriage	3.0 m		4.5 m		6.0 m		7.5 m		9.0 m		m
		LC	WLC	LC	WLC	LC	WLC	LC	WLC	LC	WLC	
10.5	NLC ¹⁾ SLC LC WLC											
9.0	NLC ¹⁾ SLC LC WLC									3.2*	3.2*	5.7
7.5	NLC ¹⁾ SLC LC WLC					5.2	5.3*			2.8*	2.8*	7.2
6.0	NLC ¹⁾ SLC LC WLC					5.1	5.7*	3.5	4.8*	2.6*	2.6*	8.2
4.5	NLC ¹⁾ SLC LC WLC	7.6*	7.6*	4.8	6.2*	3.3	5.4*	2.5	2.6*	2.5	2.6*	8.8
3.0	NLC ¹⁾ SLC LC WLC	12.4	13.6*	6.8	9.2*	4.5	6.9*	3.2	5.7*	2.3	3.6*	9.2
1.5	NLC ¹⁾ SLC LC WLC	7.2	10.4*	4.1	7.6*	3.0	5.7	2.2	4.2*	2.2	2.9*	9.2
0	NLC ¹⁾ SLC LC WLC	6.3*	6.3*	5.8	10.8*	3.9	7.7	2.9	5.5	2.2	3.5*	9.0
-1.5	NLC ¹⁾ SLC LC WLC	9.5*	9.5*	5.7	10.2*	3.8	7.5	2.8	5.4	2.3	3.7*	8.6
-3.0	NLC ¹⁾ SLC LC WLC	10.9	11.7*	5.7	8.8*	3.8	6.7*	2.8	4.9*	2.7	4.5*	7.8
-4.5	NLC ¹⁾ SLC LC WLC	6.5*	6.5*	3.9	4.8*	3.5	4.8*	3.5	4.8*	3.5	3.9*	6.6
-6.0	NLC ¹⁾ SLC LC WLC											

Stick 3.70 m

m	Under-carriage	3.0 m		4.5 m		6.0 m		7.5 m		9.0 m		m	
		LC	WLC	LC	WLC	LC	WLC	LC	WLC	LC	WLC		
10.5	NLC ¹⁾ SLC LC WLC												
9.0	NLC ¹⁾ SLC LC WLC										2.3*	2.3*	6.7
7.5	NLC ¹⁾ SLC LC WLC							3.3*	3.3*	2.1*	2.1*	8.0	
6.0	NLC ¹⁾ SLC LC WLC							3.5	4.4*	2.0*	2.0*	8.9	
4.5	NLC ¹⁾ SLC LC WLC	5.0	5.6*	3.4	5.0*	2.4	3.4*	2.0*	2.0*	2.0*	2.0*	9.5	
3.0	NLC ¹⁾ SLC LC WLC	12.5*	12.5*	7.1	8.3*	8.2	8.3*	5.2	6.4*	3.7	5.4*	9.8	
1.5	NLC ¹⁾ SLC LC WLC	8.5*	8.5*	6.4	9.8*	4.9	7.2*	3.5	5.8*	2.6	4.3	9.8	
0	NLC ¹⁾ SLC LC WLC	7.3*	7.3*	5.9	10.6*	3.9	7.7*	2.8	5.5	2.1	4.2	9.7	
-1.5	NLC ¹⁾ SLC LC WLC	9.1*	9.1*	6.6	10.5*	4.4	7.6	3.2	5.5	2.5	4.2	9.3	
-3.0	NLC ¹⁾ SLC LC WLC	10.6	12.0*	5.6	9.6*	3.7	7.1*	2.7	5.3	2.7	3.5*	8.6	
-4.5	NLC ¹⁾ SLC LC WLC	10.4*	10.4*	5.7	7.7*	3.8	5.8*	2.8	4.0*	2.3	4.0*	7.5	
-6.0	NLC ¹⁾ SLC LC WLC												

↑ Height ↻ Can be slewed though 360° 📏 In longitudinal position of undercarriage 🏗️ Max. reach * Limited by hydr. capacity

The lift capacities on the load hook of the Liebherr quick coupler 48 without attachment are stated in metric tonnes (t), and can be lifted 360° on firm, level supporting surface. Adjacent values are valid for the undercarriage when in the longitudinal position. Capacities are valid for 600 mm wide triple-grouser pads. Indicated loads are based on ISO 10567 standard and do not exceed 75 % of tipping or 87 % of hydraulic capacity (indicated by *) or are limited through the allowed lift capacity of the load hook on the quick coupler (12 t). Without quick coupler the lift capacities will increase by 250 kg, without bucket cylinder, link and lever they increase by an additional 365 kg.

According to European Standard, EN 474-5: In the European Union excavators have to be equipped with an overload warning device, a load diagram and automatic check valves on the hoist cylinders, when they are used for lifting operations which require the use of lifting accessories.

1) Values are calculated with 500 mm wide triple-grouser pads for the NLC-Undercarriage

Available Buckets

HD Buckets Machine stability per ISO 10567* (75% of tipping capacity)

Cutting width mm	Capacity ISO 7451 m ³	Weight kg	NLC-Undercarriage				SLC-Undercarriage				LC-Undercarriage				WLC-Undercarriage			
			Stick length (m)				Stick length (m)				Stick length (m)				Stick length (m)			
			2.40	2.70	3.00	3.70	2.40	2.70	3.00	3.70	2.40	2.70	3.00	3.70	2.40	2.70	3.00	3.70
Mono Boom 5.70 m																		
1,050 ¹⁾	0.95	790	□	□	□	△	□	□	□	□	□	□	□	□	□	□	□	□
1,250 ¹⁾	1.15	880	△	△	△	■	□	□	□	△	□	□	□	△	□	□	□	△
1,400 ¹⁾	1.35	970	■	■	■	▲	△	△	△	■	□	△	△	■	□	□	□	■
1,500 ¹⁾	1.45	1,015	■	■	▲	▲	△	△	■	■	■	▲	▲	□	□	□	△	▲
1,600 ¹⁾	1.55	1,060	■	▲	▲	▲	■	■	■	▲	■	■	■	▲	□	△	△	▲
1,050 ²⁾	0.95	800	□	△	△	■	□	□	□	△	□	□	□	△	□	□	□	△
1,250 ²⁾	1.15	890	△	■	■	▲	□	△	△	■	□	□	△	■	□	□	□	■
1,400 ²⁾	1.35	980	■	▲	▲	▲	△	■	■	▲	▲	△	△	▲	□	□	△	▲
1,500 ²⁾	1.45	1,025	▲	▲	▲	▲	■	■	■	▲	▲	▲	▲	▲	□	□	△	▲
1,600 ²⁾	1.55	1,070	▲	▲	▲	▲	■	■	■	▲	▲	▲	▲	▲	△	△	■	▲
Straight Mono Boom 6.00 m																		
1,050 ¹⁾	0.95	790	□	△	△	■	□	□	□	△	□	□	□	△	□	□	□	□
1,250 ¹⁾	1.15	880	△	■	■	▲	□	△	△	■	□	□	△	■	□	□	□	△
1,400 ¹⁾	1.35	970	■	▲	▲	▲	△	■	■	▲	▲	△	△	■	□	□	△	■
1,500 ¹⁾	1.45	1,015	▲	▲	▲	▲	△	△	■	■	▲	▲	▲	▲	□	□	△	▲
1,600 ¹⁾	1.55	1,060	▲	▲	▲	▲	■	■	■	▲	■	■	■	▲	□	□	△	▲
1,050 ²⁾	0.95	800	□	△	△	■	□	□	□	△	□	□	□	△	□	□	□	△
1,250 ²⁾	1.15	890	■	■	▲	▲	△	△	■	▲	□	△	△	■	□	□	□	■
1,400 ²⁾	1.35	980	▲	▲	▲	▲	△	△	■	▲	▲	▲	▲	▲	□	□	△	▲
1,500 ²⁾	1.45	1,025	▲	▲	▲	▲	■	■	■	▲	▲	▲	▲	▲	□	□	△	▲
1,600 ²⁾	1.55	1,070	▲	▲	▲	▲	■	■	■	▲	▲	▲	▲	▲	△	△	■	▲
Two-piece Boom 3.50 m																		
1,050 ¹⁾	0.95	790	□	□	□	△	□	□	□	□	□	□	□	□	□	□	□	□
1,250 ¹⁾	1.15	880	□	△	△	■	□	□	□	△	□	□	□	△	□	□	□	△
1,400 ¹⁾	1.35	970	△	■	■	▲	□	△	△	■	□	□	△	■	□	□	□	■
1,500 ¹⁾	1.45	1,015	■	■	▲	▲	△	△	■	■	▲	▲	▲	▲	□	□	△	▲
1,600 ¹⁾	1.55	1,060	■	▲	▲	▲	△	△	■	■	▲	▲	▲	▲	□	□	△	▲
1,050 ²⁾	0.95	800	□	□	△	△	□	□	□	△	□	□	□	△	□	□	□	△
1,250 ²⁾	1.15	890	△	△	■	■	□	□	△	■	□	□	□	■	□	□	□	■
1,400 ²⁾	1.35	980	■	■	▲	▲	△	△	■	▲	▲	▲	▲	▲	□	□	△	▲
1,500 ²⁾	1.45	1,025	▲	▲	▲	▲	■	■	■	▲	▲	▲	▲	▲	□	□	△	▲
1,600 ²⁾	1.55	1,070	▲	▲	▲	▲	■	■	■	▲	▲	▲	▲	▲	△	△	■	▲
Two-piece Boom 4.00 m																		
1,050 ¹⁾	0.95	790	□	△	△	△	□	□	□	△	□	□	□	□	□	□	□	□
1,250 ¹⁾	1.15	880	△	■	■	■	□	△	△	■	□	□	△	△	□	□	□	△
1,400 ¹⁾	1.35	970	■	▲	▲	▲	△	■	■	▲	▲	▲	▲	■	□	□	△	■
1,500 ¹⁾	1.45	1,015	▲	▲	▲	▲	■	■	■	▲	▲	▲	▲	▲	□	□	△	■
1,600 ¹⁾	1.55	1,060	▲	▲	▲	▲	△	△	■	■	▲	▲	▲	▲	□	□	△	▲
1,050 ²⁾	0.95	800	□	□	△	△	□	□	□	△	□	□	□	△	□	□	□	△
1,250 ²⁾	1.15	890	■	■	■	▲	△	△	■	■	□	△	△	■	□	□	□	■
1,400 ²⁾	1.35	980	▲	▲	▲	▲	■	■	■	▲	▲	▲	▲	▲	□	□	△	▲
1,500 ²⁾	1.45	1,025	▲	▲	▲	▲	■	■	■	▲	▲	▲	▲	▲	□	□	△	▲
1,600 ²⁾	1.55	1,070	▲	▲	▲	▲	■	■	■	▲	▲	▲	▲	▲	△	△	■	▲
Offset Mono Boom 5.70 m																		
1,050 ¹⁾	0.95	790	□	□	□	△	□	□	□	□	□	□	□	□	□	□	□	□
1,250 ¹⁾	1.15	880	□	△	△	■	□	□	□	△	□	□	□	△	□	□	□	△
1,400 ¹⁾	1.35	970	△	■	■	▲	□	△	△	■	□	□	△	■	□	□	□	■
1,500 ¹⁾	1.45	1,015	■	■	▲	▲	△	△	■	■	■	■	■	■	□	□	△	■
1,600 ¹⁾	1.55	1,060	■	▲	▲	▲	△	△	■	■	▲	▲	▲	▲	□	□	△	▲
1,050 ²⁾	0.95	800	□	□	△	△	□	□	□	△	□	□	□	△	□	□	□	△
1,250 ²⁾	1.15	890	△	△	■	■	□	□	△	■	□	□	□	■	□	□	□	■
1,400 ²⁾	1.35	980	■	■	▲	▲	△	△	■	▲	▲	▲	▲	▲	□	□	△	▲
1,500 ²⁾	1.45	1,025	■	▲	▲	▲	△	■	■	▲	▲	▲	▲	▲	□	□	△	▲
1,600 ²⁾	1.55	1,070	▲	▲	▲	▲	■	■	■	▲	▲	▲	▲	▲	□	□	△	▲

* Indicated loads are based on ISO 10567 max. stick length, lifted 360° on firm

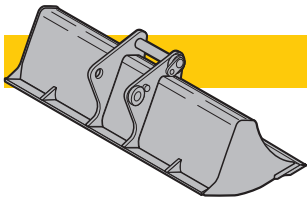
¹⁾ HD bucket for direct mounting with teeth Z 40

²⁾ HD bucket for mounting to quick coupler with teeth Z 40

Other backhoes available on request

Max. material weight □ = ≤ 1.8 t/m³, △ = ≤ 1.5 t/m³, ■ = ≤ 1.2 t/m³, ▲ = not authorized

Available Tools



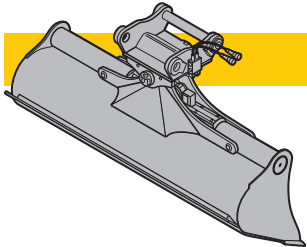
Rigid Ditchcleaning Bucket

GRL 90, for direct mounting

Cutting width	mm	1,500	2,000	2,000	2,010	2,400
Capacity	m ³	0.50	0.45	0.70	0.85	0.85
Weight	kg	400	415	506	528	586

GRL 90, for mounting to quick coupler 48

Cutting width	mm	1,500	2,000	2,000	2,000	2,400	2,400
Capacity	m ³	0.50	0.70	1.20	1.25	0.85	1.15
Weight	kg	425	522	637	599	674	646



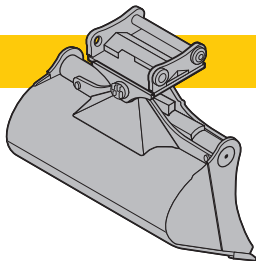
Ditchcleaning Bucket

GRL 90, 2 x 50° tiltable, for direct mounting

Cutting width	mm	1,600	2,000	2,000	2,000	2,200	2,400	2,800
Capacity	m ³	0.80	0.50	0.70	1.00	1.15	0.85	1.45
Weight	kg	798	686	819	883	920	885	1,009

GRL 90, 2 x 50° tiltable, for mounting to quick coupler 48

Cutting width	mm	1,600	2,000	2,000	2,000	2,200	2,200	2,400	2,400
Capacity	m ³	0.80	0.50	0.70	1.00	0.80	1.15	1.40	0.85
Weight	kg	850	690	880	940	880	980	1,000	890



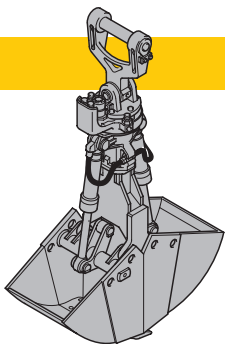
Tiltable Bucket

SL 90, 2 x 50° tiltable, for direct mounting

Cutting width	mm	1,600	1,600	1,600
Capacity	m ³	0.80	1.00	1.35
Weight	kg	768	820	918

SL 90, 2 x 50° tiltable, for mounting to quick coupler 48

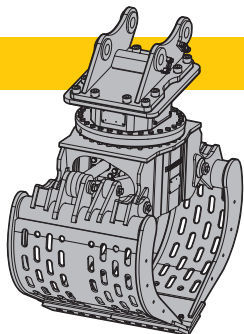
Cutting width	mm	1,500	1,600	1,600	1,600	1,600
Capacity	m ³	1.20	0.80	1.00	1.35	1.55
Weight	kg	970	820	890	970	1,035
Weight in HD-version	kg	-	-	1,006	1,184	-



Clamshells

GM 10B, earthmoving shell, for mounting to quick coupler 48

Cutting width	mm	320	400	450	600	800	1,000	900
Capacity	m ³	0.17	0.22	0.25	0.35	0.45	0.60	0.70
Weight	kg	795	835	845	885	940	995	1,222



Sorting Grapple

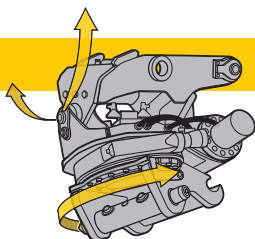
Ribbed Perforated Gravel tongs

SG 30, for direct mounting

Cutting width	mm	1,000	1,150	1,000	1,150	1,020
Capacity	m ³	0.75	0.90	0.85	1.00	0.85
Weight	kg	1,510	1,590	1,490	1,570	1,765

SG 30, for mounting to quick coupler 48

Cutting width	mm	1,000	1,150	1,000	1,150	1,020
Capacity	m ³	0.75	0.90	0.85	1.00	0.85
Weight	kg	1,510	1,590	1,490	1,570	1,765



Tiltrotator

LH-TR 25, for mounting to quick coupler 48

Weight	kg	720
Rotation		360°
Tilt		2 x 50°

Standard Equipment



Undercarriage

Lashing eyelets
Lifetime-lubricated track rollers
Sprocket with dirt ejector
Track guide at each track frame (one piece)
Tracks sealed and greased



Uppercarriage

Engine hood with lift help
Handrails, non slip surfaces
Lockable tool box
Maintenance-free swing brake lock
Sound insulation



Hydraulics

Filter with integrated fine filter area
Hydraulic tank shut-off valve and pumps
Liebherr hydraulic oil
Pressure storage for controlled lowering of equipment with engine turned off
Pressure test ports for hydraulic
Stepless work mode selector



Engine

After-cooled
Common-Rail system injection
Conform with stage IIIB/Tier 4i emission standard
Fuel filter and water separator
Liebherr particle filter
Sensor-controlled automatic engine idling
Turbo charger



Operator's Cab

7" colour multifunction display with touchscreen
All tinted windows
Automatic air conditioning
Cigarette lighter and ashtray
Coat hook
Completely retractable windscreen
Cup holder
Dome light
Door with sliding windows
Emergency exit rear window
Front windscreen (bottom) retractable
Fuel consumption indicator
Headlights (two pieces, Halogen)
Hydro mounts
LiDAT Plus (Liebherr data transfer system)*
Mechanical hour meters, readable from outside the cab
Operator seat Comfort
Preparation for radio installation
Rain hood over front window opening
Rear space monitoring with camera
Roll-down sun blind
ROPS safety cab structure
Rubber floor mat
Seat belt
Storage bin
Storage space
Sunroof, right window and windshield with safety glass
Wiper/washer



Attachment

Headlight on boom (right, Halogen)
Liebherr full-automatic central lubrication system
(except connecting link for bucket kinematics)

* optionally extendable after one year

Individual Options



Undercarriage

Reinforced cover plate and base plate for centre section
Straight track guide
Track guide at each track frame (three pieces)



Uppercarriage

Customized colors
Extended tool kit
Fuel anti-theft device
Heavy counterweight
Refuelling pump (electrical)
Reversible fan drive
Uppercarriage guard at bottom and sides



Hydraulics

Bypass filter
Liebherr hydraulic oil, biodegradable
Liebherr hydraulic oil, specially for warm and cold regions



Engine

Air pre-filter with dust trap
Automatic engine shut-down (adjustable time-period)
Fuel pre-heating system



Operator's Cab

Additional headlights or/and rear headlights (Halogen or Xenon)
Amber beacon
Auxiliary heater with weekly timer
Bullet-proof front window (one piece, fixed installation – can not be opened)
Bullet-proof front window (two pieces, fixed installation – can not be opened)
Bullet-proof glass panel in roof
Electric cool box (12 V)
Electronic drive away lock
Engine shut-down (emergency stop) in cab
FGPS front guard
Fire extinguisher
Footrest
FOPS top guard
Headlights (two pieces, Xenon)
Operator seat Premium
Proportional controls Liebherr
Radio Comfort
Roof wiper
Sun visor
Travel alarm system



Attachment

Additional headlights on boom (left, Halogen or Xenon)
Bottom boom protection for stick
Headlight on boom (right, Xenon)
Headlights on boom (Xenon)
High pressure circuit
Hydraulic or mechanical quick coupler
Liebherr automatic lubrication system for link geometry
Liebherr line of buckets
Liebherr tooth system
LIKUFIX
Middle pressure circuit
Overload warning device
Piston rod guard for adjustable cylinders
Piston rod guard for bucket cylinders
Safety check valves hoist cylinder
Safety check valves stick cylinder
Security for hoist cylinder in grab or hammer operation
Stick cylinder shut-down, adjustable
Straight mono boom
Tool Control
Two-piece boom

Options and/or special attachments, supplied by vendors other than Liebherr, are only to be installed with the knowledge and approval of Liebherr in order to retain warranty.

The Liebherr Group of Companies



Wide Product Range

The Liebherr Group is one of the largest construction equipment manufacturers in the world. Liebherr's high-value products and services enjoy a high reputation in many other fields. The wide range includes domestic appliances, aerospace and transportation systems, machine tools and maritime cranes.

Exceptional Customer Benefit

Every product line provides a complete range of models in many different versions. With both their technical excellence and acknowledged quality, Liebherr products offer a maximum of customer benefits in practical application.

State-of-the-art Technology

To provide consistent, top quality products, Liebherr attaches great importance to each product area, its components and core technologies. Important modules and components are developed and manufactured in-house, for instance the entire drive and control technology for construction equipment.

Worldwide and Independent

Hans Liebherr founded the Liebherr family company in 1949. Since that time, the enterprise has steadily grown to a group of more than 120 companies with over 35,000 employees located on all continents. The corporate headquarters of the Group is Liebherr-International AG in Bulle, Switzerland. The Liebherr family is the sole owner of the company.

www.liebherr.com