



For Earth, For Life
Kubota

XMS

KUBOTA FIELD SPRAYERS XMS18/XMS110/XMS112

Field sprayers with a working width from 12 up to 21m



SELECT THE RIGHT MO

KUBOTA XMS18/110/112

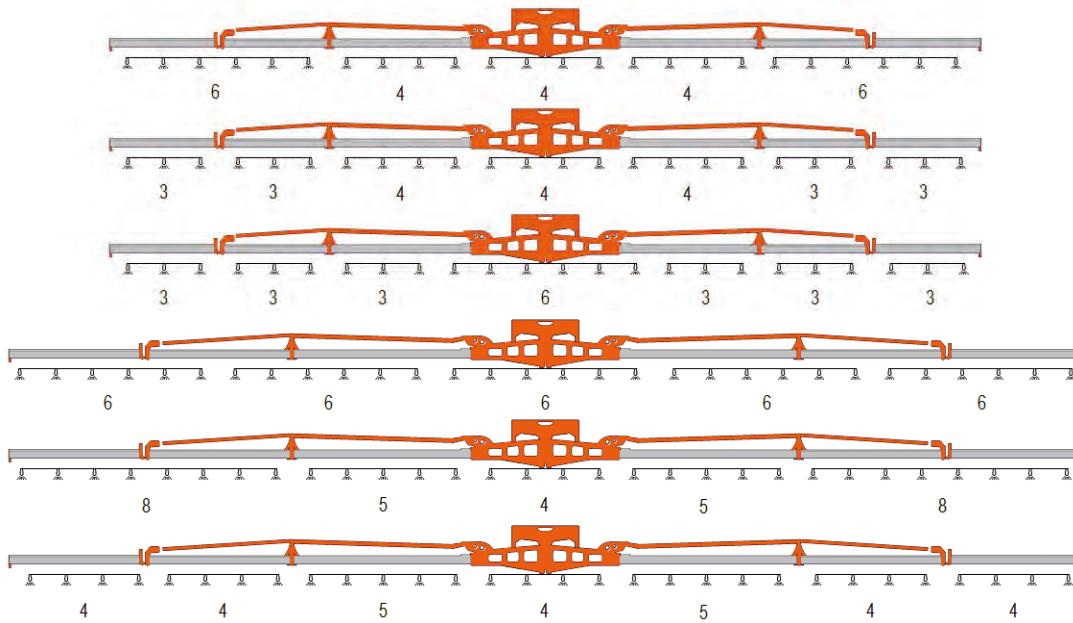
HOSA 12/15m aluminium spray boom



HC 18/20/21m steel spray booms



HOSA 12/15m



HOSA 12 - 5 sections

HOSA 12 - 7 sections v1

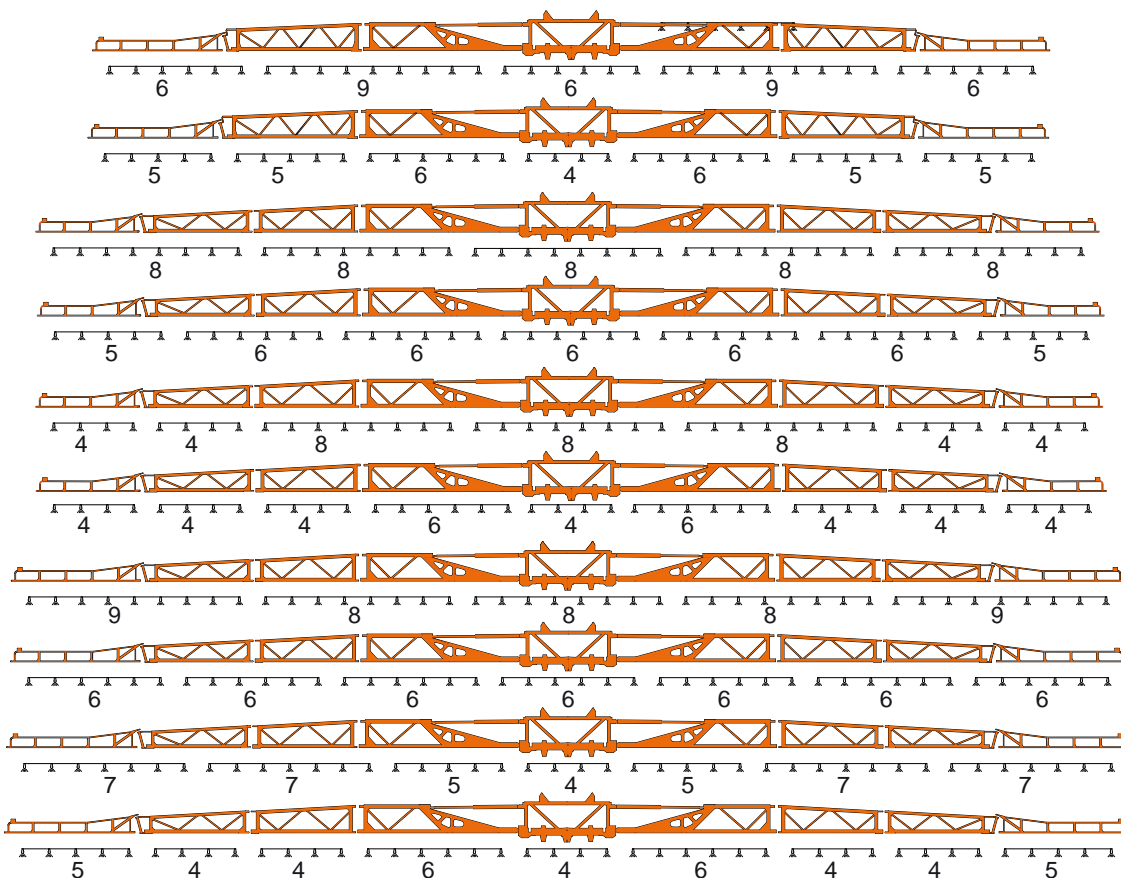
HOSA 12 - 7 sections v2

HOSA 15 - 5 sections

HOSA 15 - 5 sections

HOSA 15 - 7 sections v1

HC 18/20/21m



HC 18 - 5 sections

HC 18 - 7 sections v1

HC 20 - 5 sections v1

HC 20 - 7 sections

HC 20 - 7 sections v2

HC 20 - 9 sections v1

HC 21 - 5 sections v1

HC 21 - 7 sections

HC 21 - 7 sections v2

HC 21 - 9 sections v1

MAKE YOUR LIFE EASY

EASY HITCH

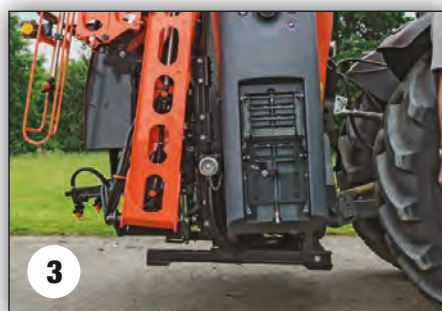


Weight carried closer to the tractor for maximum weight transfer.

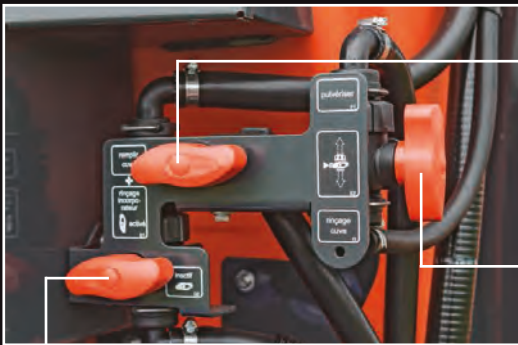


- The XMS1 makes life simple for you:
- 1 Enough space to connect the PTO shaft, hydraulic and electric cables.
 - 2 Drive backwards to connect to the sprayer.
 - 3 Lift up the sprayer.
 - 4 Push in the storage legs and the XMS1 is ready to go!

A parking frame is available for easy hitching and storage of the sprayer.



CONTROL PANEL



2-Position pressure valve:

- Vertical: active chemical inductor
- Horizontal: deactive chemical inductor

Intuitive control panel design separates suction and pressure sides. It is conveniently located on the left-hand side of the sprayer.

2-Position pressure valve:

- Left: filling main tank
- Right: spraying mode

2-Position pressure valve:

- Up: Spraying
- Down: additional functions; tank cleaning, external cleaning, liquid transfer

2-Position suction valve:

- Vertical: no suction from chemical inductor
- Horizontal: suction from chemical inductor to main tank

2-Position suction valve:

- Vertical: main tank
- Horizontal: external or clean water



2-Position suction valve:

- Vertical: clean water tank
- Horizontal: external water



Full integration concept:

It is easy to operate the XMS1 sprayer with the control panel, chemical inductor, handwash tank and clean clothes locker all on the same side of the sprayer. The chemical inductor is securely stored when it is not in use.



SAFE, CLEAN AND EASY



18 litre hand wash tank

Everything is available to keep your hands clean. Easy access to fill the tank via the opening in the cover. You can wash your hands using the hand wash tap.



Chemical inductor

The graduated chemical inductor with a capacity of 30 litres is mounted on a pivoting point and fully integrated in the frame. The rotating can-wash nozzle releases water when pushed downwards. The circular rinsing system is no add on: it is part of the design!



130 litre clean water

The sprayer can be cleaned in the field with water from the clean water tank. The level sight gauge indicates the amount of water in the clean water tank. An external cleaning set is optional and includes a 15m hose, a brush with insert for soap, all linked to the pressure side of the pump.



Clean cloth locker

The clean clothes locker allows you to keep your safety and cleaning equipment or tools with you on the sprayer.



Hydrant filling

The optional 2 inch hydrant filling device allows filling under pressure at high capacity. A GEKA adapter for 1 inch filling is available as an option.



Filling via the 1.5 inch suction hose

Water is filtered initially by the filter on the hose and then by the suction filter. At the same time you can use the chemical inductor to add and premix chemicals. A CAMlock adapter for 2 inch filling is available as an option.

Y FILLING



Rotating level indicator

A rotating level indicator provides the actual tank volume.



Central pressure filter

The pressure filter prevents blockages by keeping the filter mesh clean. You can use a 50 or 80 mesh filter.



High capacity suction filter

Both suction and pressure filters are easily accessible for inspection and cleaning, ensuring minimal contact with pesticide. The high capacity suction cleans all liquid before it enters the pump.



Silent piston diaphragm pumps

Pumps are available with capacities of 100, 150 and 200 l/min. They are liquid fertiliser resistant and capable of running dry without damage.



Stairs to tank lid for filling or inspection:

The fully integrated step and hand grips allow safe access to the tank lid even on the 1200 litre tank.

WITH CARE FOR THE ENVIRONMENT

SPRAYER TEST HALL FOR TOP QUALITY



A certified test crew is testing every XMS1, and of course all other sprayers, leaving the factory in our own test hall to meet the latest environmental regulations. Our testers are certified for all of the following test procedures.



NSTS:
National Sprayer Testing Scheme is the relevant authority in UK for sprayer homologation.



JKI:
Official homologation for Germany, delivered by the Federal Biological Research Centre of Germany, now JKI Institute.



ENTAM:
Homologation is in process. ENTAM is the European Network for Testing Agricultural Machines. JKI of Germany and Cemagref of France are among others, official members of ENTAM.



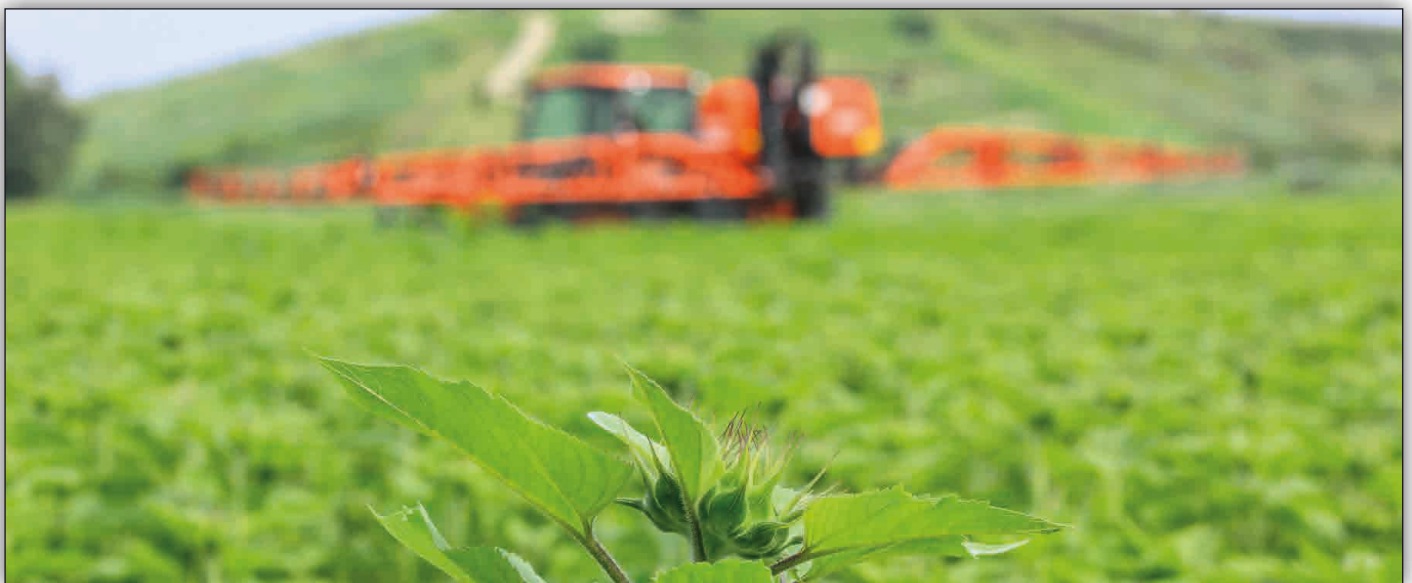
SKL:
Official homologation for Benelux, delivered by the SKL foundation for agricultural machinery in Wageningen.



NY:
Official homologation for Norway, delivered by the Norwegian Food and Safety Authority.

Environmental FOCUS: ENFO priming and rinsing system is standard on all our spray computers

This smart technology optimizes filling and cleaning of the spray lines. Accurate application, no waste of chemicals and saving water are the benefits for you and your environment.



Automatic Priming of spray lines:

before spraying starts the spray lines are filled with chemicals exactly up to the nozzle by automatic section shut off. This means no waste of chemicals and accurate application from the first moment!

Automatic Rinsing of spray lines:

after finishing or interruption, the pesticides are automatically flushed out of the spray lines. This means using up to the last litre of mixture and rinsing the spray lines with the minimum amount of clean water.

VIROENVIRONMENT

EC AND FMC



Remote Control EC :

- All in one remote control
- Spraying on/off functions including up to 7 sections and two boarder nozzle switches
- Agitation shut off
- Pressure control
- Pre-select hydraulic boom functions



FlowMate Control FMC:

- Basic spray computer
- Extremely simple to operate
- Very compact by integration of all spraying and hydraulic functions
- Controlling the unique ENFO functions
- Integrated nozzle advice
- Field memory for 25 different fields

STARGUIDE IV

Starguide IV: Automatic GPS section control and guidance by D-GPS

Those who have used it will never go back. Starguide IV will change your spraying days forever: spray around the headland and Starguide IV will control the spray sections automatically as you cover the remainder of the field. Starguide IV is easy to operate: after spraying a field boundary the overlap and headland management are controlled for the rest of the field!

The Starguide IV enables you:

- Spraying in the dark
- Accurate spraying by full overlap control
- Increased operator comfort
- Cost savings by reduced overlap

In addition the Starguide IV also includes the following features:

- Easy to operate intuitive 5.7" colour touch screen
- Field view with covered areas and overlap
- Single and double overlap in different colours
- GPS status warnings
- USB slot for data export in different formats
- RXA-30 antenna



INNOVATIONS TO MAKE



HOSA BOOM

The HOSA is a unique boom having an advanced Z-folding principle: the lateral movement enables you to quickly reduce boom width and pass obstacles in the field. The aluminium profile is designed for maximum resistance. No welding provides remarkable strength, the anodised hardened surface protects against scratches and corrosion.

- Z-folding aluminium boom
- One-side spraying possible
- 2,50m transport width
- Heavy-duty construction, light weight
- Profile integrated nozzle protection
- Smooth surface for easy cleaning
- Monojets or Trijets
- Central locking of pendulum system



LIFE EASY



One side spraying



Transport locking



Hydraulic locking pendulum system



Safety break-away



THE VERSATILE BOOM



The HC boom is a multi-talented boom. The triangular steel construction and the unique anti yaw system allow high speed even in very difficult conditions.

Light weight, maximum strength

The HC boom has been designed for 100% integration of spray lines and nozzles, for light weight and maximum strength.





Safe on the road

The 2.50 m transport width means that even narrow roads and gateways are no obstacle.

Multiple folding possibilities

The HC boom gives you the functionalities for one side folding, symmetrical reduction and asymmetrical reduction depending on the choice for the electric hydraulic command.

TECHNICAL SPECIFICATIONS

MOUNTED SPRAYER MODELS	XMS18	XMS110	XMS112
1. Tank size			
Nominal / maximum main tank capacity	800 l / 965 l	1000 l / 1185 l	1200 l / 1395 l
Clean water tank / Hand wash tank	130 l / 18 l	130 l / 18 l	130 l / 18 l
Chemical inductor with opening of 40x40 cm	30 l	30 l	30 l
2. Empty weight (total machine incl. boom)			
... with HOSA 12 m	889 kg	901 kg	913 kg
... with HOSA 15 m	952 kg	964 kg	976 kg
... with HC 18 m	1207 kg	1219 kg	1231 kg
... with HC 20 m	1287 kg	1299 kg	1311 kg
... with HC 21 m	1293 kg	1305 kg	1317 kg
3. Measurements			
Width (total machine incl. boom)	HOSA = 2,35 m / HC = 2,50 m		
Height (total machine incl. boom)	HOSA12 = 2,56 m / HOSA15 = 2,85 m / HC = 3,30 m		
Length (total machine incl. boom)	HOSA = 1,35 m / HC18 m = 1,45 m / HC20-21 m = 1,65 m		
4. Pumps			
Piston-diaphragm pumps	100, 150, 200 l/min		
5. Electronics			
5.1. Remote control			
EC 5-section 3-way-valves, for pre-selection hydr. (incl. EC control box)	▲ ¹ not for HC		
5.2. Basic spray computer			
FMC 5-section 2-way-valves, for pre-selection hydraulics (incl. FMC control box)	▲ ²		
FMC 7-section 2-way-valves, for pre-selection hydraulics (incl. FMC control box)	▲ ³		
FMC 9-section 2-way-valves, for pre-selection hydraulics (incl. FMC control box)	▲ ⁴		
FMC 5-section 2-way-valves, for oilcircuit hydraulics (incl. FMC control box)	▲ ⁵		
FMC 7-section 2-way-valves, for oilcircuit hydraulics (incl. FMC control box)	▲ ⁶		
FMC 9-section 2-way-valves, for oilcircuit hydraulics (incl. FMC control box)	▲ ⁷		
6. Other basics			
Chemical inductor	▲		
PTO shaft 6-splines	▲		
Frame stand, Clean water tank, Hand wash tank, Manometer, Mechanical level indicator, Tank inside cleaner, Drain (via filter)	standard		
7. Accessories (also loose available)			
Protection curtain	•		
Hydrant filling connection 2"	•		
GEKA filling adapter 1" for hydrant filling	•		
CAMlock adapter 1,5" to 2" for filling hose	•		
Filling hose 8m 1,5" (for sucking from external)	•		
Float for filling hose	•		
Non return valve 1,5" for filling hose	•		
Urea sieve	•		
Pump out connection	•		
Parking frame	•		
Battery cable 3 pin (only for EC/FMC, if no power connector at tractor)	•		
Starguide IV	•		
Booms			
	HOSA 12 / 15	HC 18 / 20 / 21	
1. Basic boom functionality			
Working width (m)	12/15	18 / 20 / 21	
Material	Aluminium	Steel	
Transport position	Vertical	Vertical	
Folding drive	Hydraulically	Hydraulically	
2. Spray sections			
Standard	5 / 5	5 / 7 / 7	
Alternative 1 (two sections more than standard)	7 / 7	7 / 9 / 9	
Alternative 2 (two sections less than standard)	- / -	- / 5 / 5	
3. Spray jets			
Monojets	▲ ¹	▲ ¹	
Trijets	▲ ²	▲ ²	
Pentajets		▲ ³	
4. Other			
Road lights	•	•	
Electrical or manual border nozzle	•	•	
Electrical or manual verge nozzle	•	•	

▲¹- ▲³ - = one of these choices must be selected, ▲ = must be selected, • = option, free to select

A COMPLETE RANGE OF MOUNTED FIELD SPRAYERS

Kubota now offers a complete range of mounted sprayers. The XMS1 joins the existing XMS2 mounted field sprayer range, to offer a comprehensive mounted sprayer range, including the XFT front tank.

XMS18 - 110 -112

The XMS1 is a professional mounted sprayer, which is easy to operate. The XMS1 is available with 800, 1000 and 1200 litre tank capacity in combination with two different boom types: the HOSA aluminium spray boom and the HC steel boom range. The centre of gravity for the sprayer is extremely close to the tractor for an optimal weight transfer. Operation can be made easy with the simple Electric Remote Control or the well-proven FMC spray computer.



XMS210 - 213 - 216 - 218

The XMS2 is an ISOBUS compatible mounted sprayer available in 4 different tank sizes: 1000, 1300, 1600 and 1800 litres and 2 different boom types (HOSA and HC). The HC boom range is even available up to 30 metres. The centre of the gravity of the sprayer is close to the tractor for maximum weight transfer. It is very easy to work with the control panel. The valves are well protected behind the door. To operate the XMS2 you can use the EC remote control, FMC spray computer, IsoMatch Tellus GO or the IsoMatch Tellus terminal.



XFT Comfort or XFT Pro

The XFT front tank has a nominal volume of more than 1100 litres. The XFT is that front end weight, adding stability to your tractor! In combination with the XMS2 mounted sprayer, the XFT provides a total volume of around 3000 litres, making this combination a serious alternative to a self propelled sprayer. The XFT is available as Comfort (manual control panel) or Pro (electrical control panel) version. You can select the front tank from the cab or through the EasySet valve panel. Without a front PTO shaft or hydraulic hoses, hitching and unhitching the XFT is extremely simple.

The company reserves the right to change the above specifications without notice. This brochure is for descriptive purpose only. Some of the items pictured in this brochure are optional and not standard equipment. Please consult your local Kubota dealer for warranty, safety or product information. For your safety, Kubota strongly recommend the use of a seat belt in all applications.

©2016 Kverneland Group Nieuw-Vennep BV

