

# ROTATING SCREENING BUCKETS

5 models for excavators with operating weight from 5 to 35 ton

The screening bucket's compact and heavy duty structure ensures a reliable screening capacity with low running costs.

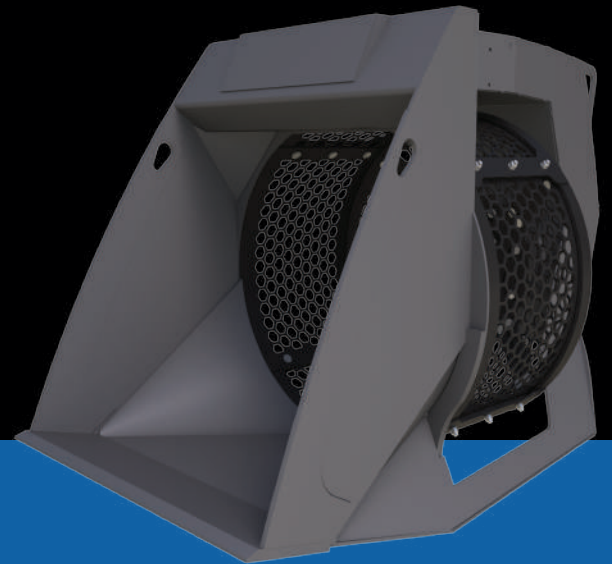
This machine enables materials to be classified and separated more precisely.

The exchangeable grids allow for sieving and screening in different, variable sizes.

The grids can be used for pre-filtering (prior to crushing) and for final classification purposes. These buckets are used for working with natural rock, for recycling and in agriculture. Also available for skidsteers.

We take pride in ensuring that all our materials and components are top quality

## KR SERIES

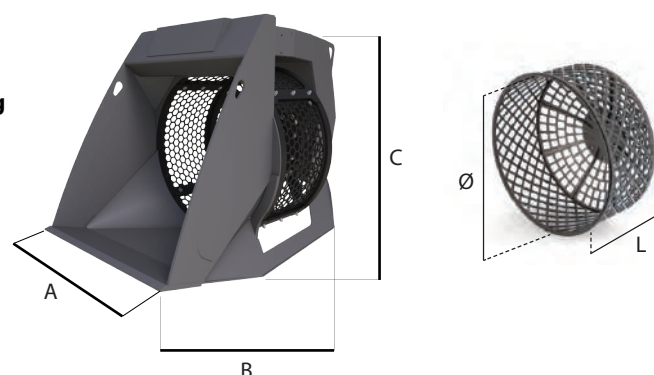


## RECYCLE AND SAVE!

MODELS		KR05	KR07	KR10	KR15	KR20
t		5-10	8-14	13-20	18-26	24-35
kg		350	750	1200	1500	2200
l/min		25	75	75	75	125
bar		130	160	160	160	160
A	mm	900	1000	1200	1500	1800
B	mm	1150	1580	1880	2010	2315
C	mm	940	1160	1570	1780	2140
Ø	mm	700	900	1100	1300	1550
L	mm	430	592	720	780	850
load volumes	m <sup>3</sup>	0.4	0.75	1.0	1.5	2.2

\*All illustrations and numerical data in this catalog are purely indicative and subject to change at our discretion and without notice. We therefore reserve the right to modify them with a view to improving and continuously developing our product.

Technical Drawing



[WWW.HAMMEREUROPE.COM](http://WWW.HAMMEREUROPE.COM)



**FIND OUT  
MORE**

Optionals accessories and easy exchangeable parts are available.

- High efficiency: different screening grids.
- Fast and easy replacing of screening grids.
- Teeth for better plunge behavior.
- Optional wear and tear side plates available upon request.
- Constant output, even with sticking sieverings, thanks to optional brush.
- Optional Crush Control inside the cabin with display, so to have sight into the screening grid (the camera and the display are charged by the excavator's battery).



**PRESSURE UP TO 200 BAR**



**MINING & QUARRYING**



**DEMOLITION & RENOVATION**



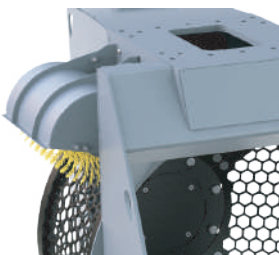
**CONSTRUCTION**



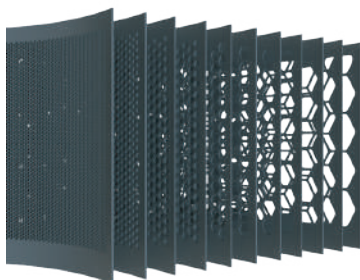
**METALLURGICAL INDUSTRY**



**Crush Control**



**Brush**



**Easy replacing  
of screening  
grids**





Valvola di Velocizzazione  
Speed Valve  
Eilgangventil  
Speed Valve  
Valvula de Velocidad  
Скоростной клапан



Moltiplicatore di pressione BOOSTER  
Pression multiplier BOOSTER  
Druckmultiplikator BOOSTER  
Multiplicateur de pression BOOSTER  
Multiplicador de presion BOOSTER  
Множитель Давления BOOSTER



Peso attrezzatura  
Equipment weight  
Eigengewicht  
Poids de l'outil  
Peso del implemento  
Вес оборудования



Rotazione continua 360°  
360° rotation  
360° Kontinuierliche Rotation  
Rotation continue 360°  
Rotación continua a 360°  
Непрерывное вращение на 360°



Peso escavatore  
Excavator weight  
Baggergewicht  
Poids du porteur  
Peso Escavadora  
Вес экскаватора



Portata olio della rotazione  
Rotation oil flow capacity  
Oelfluss der Rotation  
Débit hydraulique rotation  
Caudal de aceite necesario para la rotación



Peso escavatore - posto benna  
Excavator weight - stick mounting  
Baggergewicht - Loeffelstiehlmontage  
Poids du porteur - au but du  
Peso escavadora al segundo brazo  
Вес экскаватора (Рукоять)



Pressione di esercizio rotazione  
Rotation Pressure  
Oeldruck der Rotation  
Pression hydraulique rotation  
Presión necesaria para la rotación  
Давление ротации



Peso escavatore - posto braccio  
Excavator weight - boom mounting  
Baggergewicht - Baggerarmmontage  
Poids machibe - montage a la place du  
balancier  
Peso escavadora al balancin



Pressione di esercizio escavatore  
Excavator working pressure  
Oeldruck der Bagger  
Pression hydraulique excavateur  
Presión de la Escavadora  
Давление откр./закр. челюстей

**F3**

Forza in punta  
Tip force  
Schliesskraft auf die Spitze  
Force à la pointe  
Fuerza en punta  
Мощность на кончике



Portata olio escavatore  
Excavator oil flow capacity  
Oelfluss der Bagger  
Débit hydraulique excavateur  
Caudal aceite de la Escavadora  
Поток откр./закр. челюстей



Lunghezza lama  
Steel blade length  
Messerlaenge  
Longuer couteau  
Anchura cuchilla  
Длина ножей

All illustrations and numerical data in this catalog are purely indicative and subject to change at our discretion and without notice. We therefore reserve the right to modify them with a view to improving and continuously developing our product.