

HMF 3220K-RCS

Product flyer



POWER TO LIFT



High manoeuvrability and working speed

The HMF 3220K is a versatile crane with a wide variety of options. The crane provides for low costs of ownership for you as a crane owner. With a low tare weight and reduced space requirements of only 1034 mm, maximum utilization of the truck body as well as savings on fuel are ensured. The crane is moreover designed in a service-friendly manner and with internal hose routing to protect against external damage. This ensures easy maintenance, little downtime and ultimately low costs of ownership.

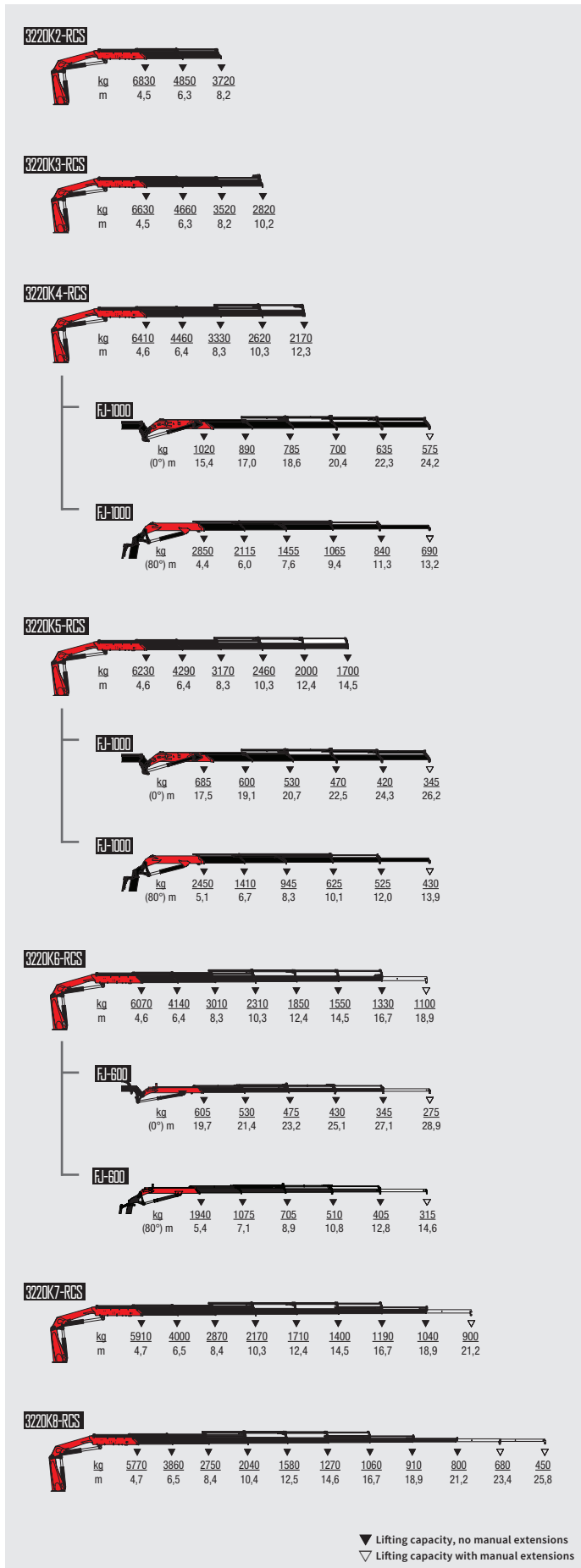
Why choose the 3220K?

- The crane is suited for a wide range of tasks from heavy lifting to assembly work
- The dual link arm system ensures strength and stability in all boom positions
- High manoeuvrability and working speed

PERFORMANCE	3220K2-RCS	3220K3-RCS	3220K4-RCS	3220K5-RCS	3220K6-RCS	3220K7-RCS	3220K8-RCS
Load moment (tm)	30.7	29.8	29.5	28.7	27.9	27.8	27.1
Hydraulic reach (m)	8.3	10.3	12.4	14.6	16.8	19.0	21.3
Weight excl. stabilizers (kg)	2590	2790	2990	3160	3320	3470	3595
Weight of stabilizers, standard (kg)	370	370	370	370	370	370	370
Lift-to-weight ratio	10.4	9.4	8.8	8.1	7.6	7.2	6.8
Continuous slewing area	∞	∞	∞	∞	∞	∞	∞
Slewing torque (kgm)	3800	3800	3800	3800	3800	3800	3800
Working pressure (bar)	365	365	365	365	365	365	365
GEOMETRY							
Height above mounting surface (mm)	2350	2350	2350	2350	2350	2350	2350
Width, folded (mm)	2500	2500	2500	2500	2500	2500	2500
Length of crane, no extra valves (mm)	1024	1024	1024	1024	1024	1130	1130
Over-bending on crane (°)	15	15	15	15	15	15	15
Over-bending on fly-jib (°)	-	-	20	20	20	-	-

BASIC FEATURES
Electronic speed adaptation system, HDL-D/HD5
Progressive Crane Control (PCC)
Priority Flow Control (PFC)
Dual Power Plus link arm system
Proportional control valve PVG 32
Radio remote control of stabilizer beams and stabilizer legs on crane
Internal hose routing

SELECTED OPTIONS
SPECIAL OPTIONS
Fly-jib 1000 with up to 5 extensions
Fly-jib 600 with 3 or 4 extensions
Hydraulic hoist 2500 kg
Personnel basket
STABILITY AND SAFETY
Electronic Vehicle Stability (EVS)
Monitoring of stabilizer legs down (CYL)
Monitoring of stabilizer beams fully extended and stabilizer legs down (CYBEL)
Alarm flash on stabilizer legs
EXTRA VALVES
2 extra valves
Extra valves in hose guides
Extra valves in hose reels, internally in the jib extensions
Extra valves in hose reels, externally
Multi-coupling for 2 extra valves in hose guides
STABILIZER BEAMS AND LEGS
Hydraulic or manual stabilizer beams from 5.6 m to 6.4 m
Hydraulic swing-up stabilizer legs
Manual swing-up stabilizer legs with gas spring
Footplate with ball joint on stabilizer legs
HYDRAULICS
Oil tank 160 l mounted on the crane
Oil cooler with temperature monitoring, medium size (q=0.3 kW/°C) or big (q=0.4 kW/°C)
Up to 8 radio remote controlled available stabilizer functions
1 radio remote controlled available proportional function (PVG32)



For more information visit
hmfcranes.com