

# GHG140

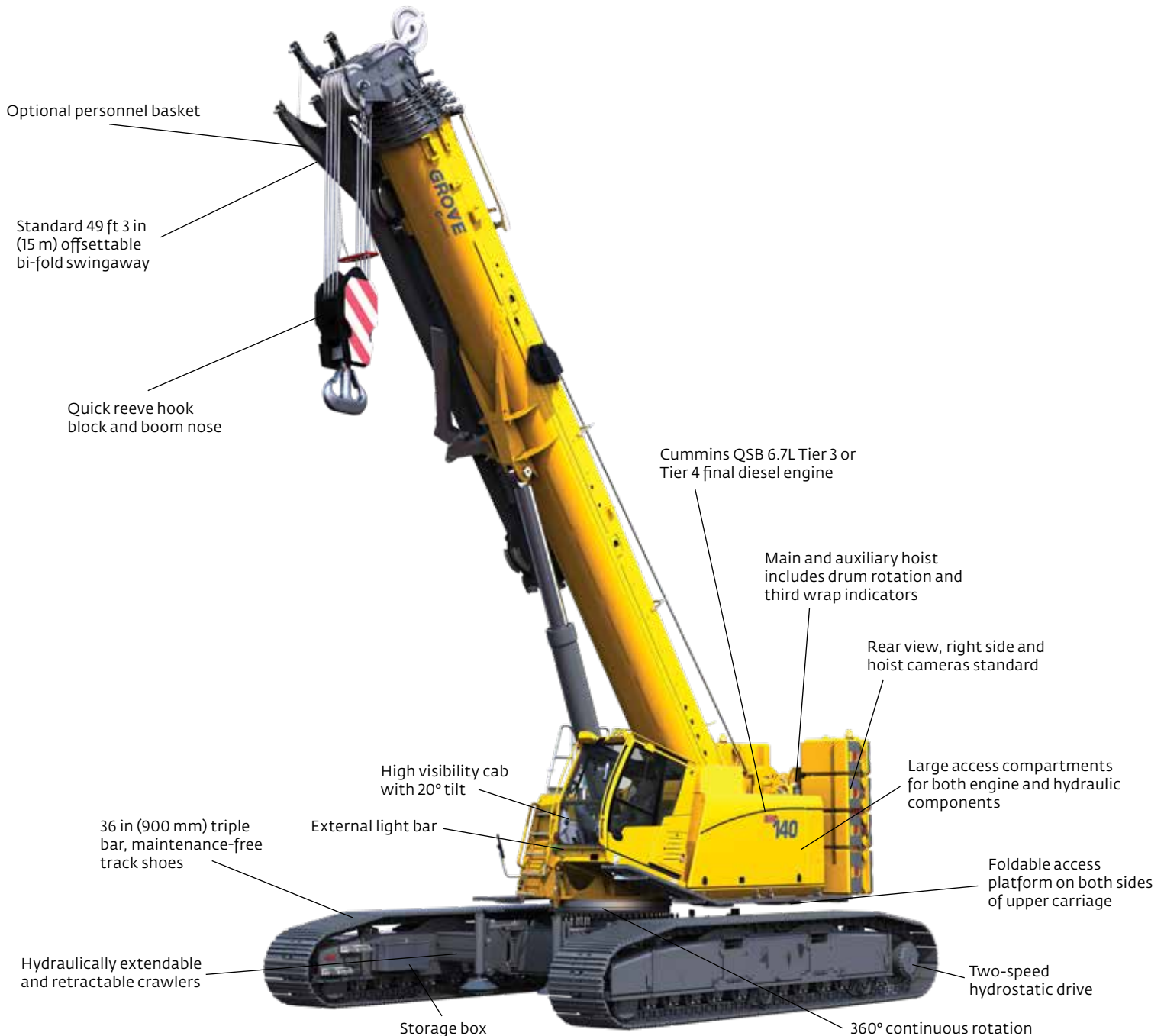
**GROVE**<sup>®</sup>  
by **Manitowoc**

**Capacity:** 127 t (140 USt)

**Main boom:** 40 ft - 171 ft (12,2 m - 52,1 m) six-section pin boom

**Maximum boom extension:** 49 ft 3 in (15 m) offsettable  
bi-fold swingaway

**Maximum tip height:** 229 ft 8 in (70 m)



FIND YOUR LOCAL DEALER AT:

[WWW.MANITOWOC.COM](http://WWW.MANITOWOC.COM)

**Manitowoc**<sup>®</sup>

# GHC140

## Outstanding versatility and durability

- 229 ft 8 in (70 m) maximum tip height with optional 49 ft 3 in (15 m) offsettable bi-fold boom extension for increased reach
- Cummins QSB 6.7L Tier 3 or Tier 4 final diesel engine — proven performance that conforms to EPA requirements
- Strong capacities for any jobsite with load charts at 0.3°, 1.5°, 2.5° and 4°
- New 1.5° charts provide versatility with unmatched capacities
- 57% gradeability (theoretical), allowing the operator to tackle the most daunting terrains

## Quick and easy transport

- Transports to the jobsite in four or five loads
- Retracted gauge for transport width
- Self-assembly counterweight
- Undercarriage frame with jacks for easy self-assembly of crawlers

## Excellent serviceability

- Central, easily accessible lubricating points
- Foldable access platforms on both sides of the upper carriage
- Work lights in both the engine and hydraulic compartments
- 3-micron filters provide optimal protection, cleaner oil and extended oil service life
- Storage box for tools, rigging equipment

## Strong undercarriage with excellent mobility

- 100% pick and carry
- Two-speed hydrostatic drive
- Hydraulically extendable and retractable crawlers
- Allows for skid steering and counterrotation

## Outstanding operator ergonomics in a large, high-visibility cab

- 20° tilt cab
- Load-sensing, electric dual-axis joystick controls
- Air-suspended, heated operator seat
- Color monitor for up to four exterior cameras
- Graphical RCL for load moment with advanced crane performance optimization and diagnostics
- Climate control provides all-day comfort

## Versatile attachments

- Standard 49 ft 3 in (15 m) bi-fold swingaway extension. Offsettable at 0°, 20° and 40°
- Optional 1,200 lb (544,3 kg) personnel basket

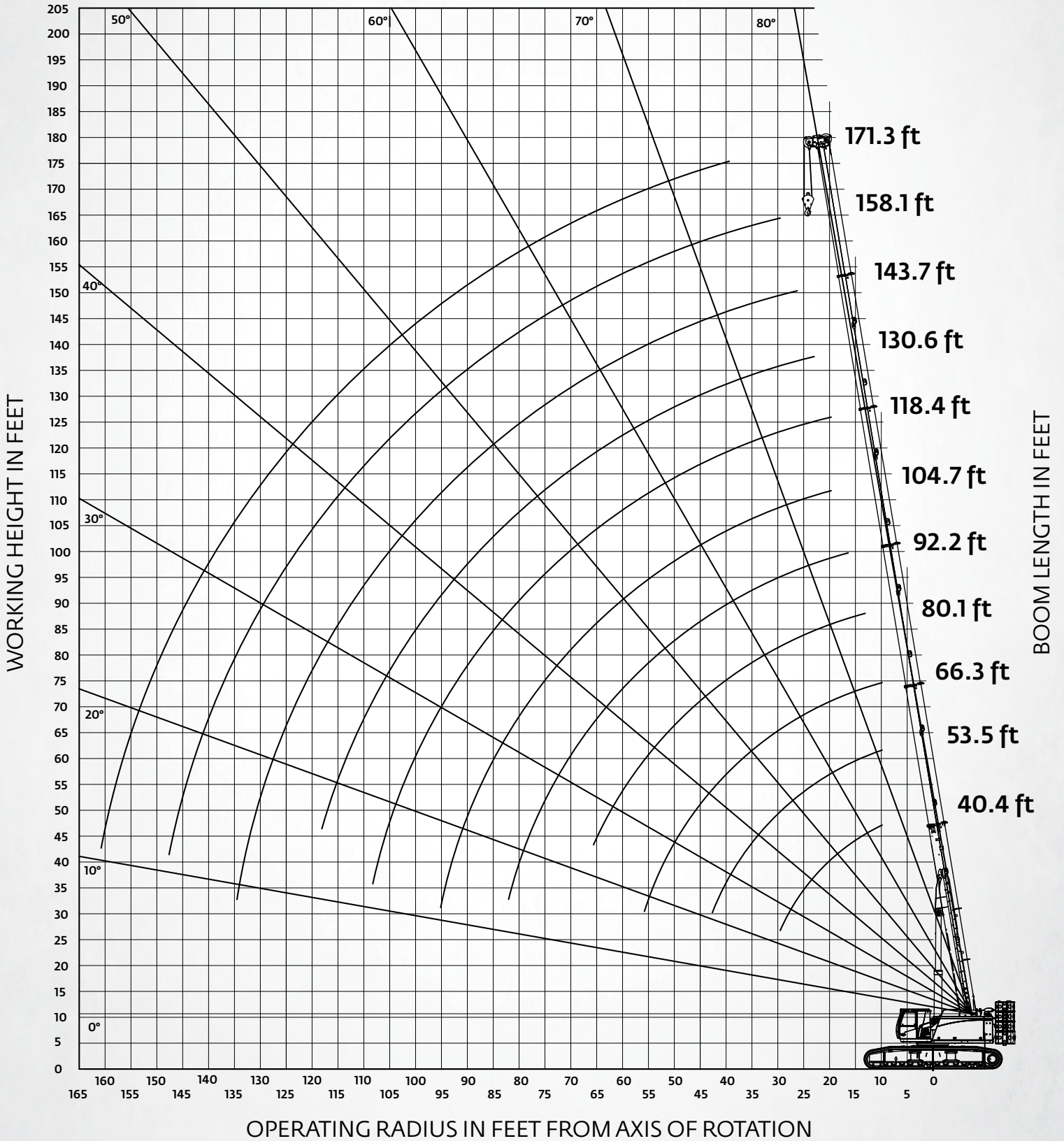






# GHC140

## WORKING RANGE — MAIN BOOM





## LOAD CHARTS — MAIN BOOM (PRELIMINARY)



40 ft - 171 ft  
(12,2 m - 52,1 m)



35,3 t  
(77,823 lb)



5,4 m  
(17,3 ft)



360°



1.5°



Pounds

Feet	40.4	53.5	65.6	78.7	91.9	105.0	118.1	131.2	144.4	157.5	171.3
10	154.3	141.1	119.0								
15	154.3	141.1	119.0	110.2							
20	152.6	139.8	119.0	109.8	99.0	77.2	68.3				
25	124.4	121.0	113.6	101.7	95.6	77.2	66.1	42.3			
30		99.8	99.8	91.0	89.8	76.8	62.4	40.7	32.0	23.1	
35		82.3	83.0	81.6	80.8	74.2	58.3	39.9	32.0	23.1	
40		64.7	66.9	66.9	69.1	72.5	54.4	38.8	32.0	23.1	19.2
45		52.9	55.1	55.1	57.3	70.9	50.7	36.8	32.0	23.1	19.2
50			46.1	47.4	48.3	55.5	47.7	34.7	30.9	23.1	19.2
55				40.7	41.6	42.9	44.3	32.8	29.4	23.1	19.2
60				34.3	36.5	36.8	40.1	31.0	27.7	23.1	19.1
65				29.3	31.5	33.5	35.4	29.3	26.2	23.1	19.0
70					27.9	30.1	31.9	27.9	25.0	22.9	18.8
75					24.6	26.8	28.7	26.7	23.8	22.4	18.6
80						23.6	25.6	25.5	22.7	21.8	18.5
85						21.1	22.2	24.3	21.7	21.0	18.3
90						19.4	20.5	21.9	20.7	20.0	18.1
95							18.8	19.9	19.8	19.1	17.9
100							17.2	18.3	18.5	18.1	17.2
105								17.0	16.5	16.8	15.6
110								15.6	15.4	15.4	14.3
115								14.3	14.1	14.2	13.1
120									13.0	13.1	11.9
125									12.3	12.1	10.7
130									11.3	11.1	9.7
135										9.9	8.8
140										9.0	8.0
145											7.2
150											6.5
155											5.7