

A close-up photograph of a yellow and black CAT Multi-Grapple attachment on an excavator. The grapple is positioned over a pile of scrap metal. The grapple's body is black with yellow accents, and it features a series of yellow, curved, ribbed fingers. A black hydraulic hose is visible on the left side. The background shows a blurred industrial setting with a building and a clear sky.

**G310B/G315B  
G320B**

**Multi-Grapples**

**CAT**<sup>®</sup>

**For Demolition and Recycling applications**

# Cat® G310B, G315B and G320B Multi-Grapples

*For Demolition and recycling applications*



Caterpillar G310B, G315B and G320B Multi-Grapples are equally well suited for demolition of brick and wood structures. These Multi-Grapples are extremely effective for sorting and loading a variety of different materials as found in demolition and scrap piles. The speed, dexterity, clamping force and rugged construction make these Multi-Grapples ideal tools for

demolition of (non-) concrete structures. They can accomplish all required operations such as the demolition itself, sorting of the debris, loading and site clean up. Multi-Grapples are also well suited for most recycling operations because of the efficiency with which the operator can sort and pile the different materials normally found in waste-processing applications.

## **Performance and Versatility**

The Caterpillar G300B-series Multi-Grapples are designed to deliver maximum performance and efficient operation when matched to Caterpillar and competitive excavators. They feature 360 degree hydraulic rotation, robust yoke, high closing force, high parts commonality, improved durability and less maintenance. The G300B-series Multi-Grapples have a unique design and are available in two versions to ensure an optimal performance in your application. There is a purpose-designed version for demolition applications or a purpose designed version for waste processing applications.

## **New Features**

The G300B-series Multi-Grapples include a number of new and improved features designed to maximize productivity and minimize downtime. These include the following:

## **Design**

- Perfect match with Caterpillar machines and improved matching with non-Caterpillar machines.
- Increased closing force (G315B and G320B only).
- Better force distribution by using 1 cylinder with 2 push rods
- High performance rotator with more torque.
- Differentiation, for optimal performance in different applications. Demolition-version: heavy-duty design for demolition and sorting applications. Like stripping buildings or constructions, selective demolition and sorting construction and demolition waste. Recycling-version: designed for waste sorting and loading applications. The ability of this grapple to precisely sort and pick out certain materials to be processed separately makes it the perfect grapple for this application.
- 90° angled shells (angle versus ground level) in fully opened position.

### Durability

- Robust construction with better weight distribution.
- Improved durability of hinges by using high quality bushings with lubrication grooves, hardened pins and dust seals.
- Dust seals are applied inside which makes this a unique design with reduced axial play, optimal protection against damaging and less grease consumption.
- Machined hinges to minimize axial play.
- Bolt-on cutting edge standard included.
- Parts reduction in upper head. Rotator replaces swivel and hydraulic motor for rotation. The number of hydraulic lines and connectors is reduced significantly to reduced possibility of leakage.

- Maximum protection of hydraulic components. Rotator is mounted inside upper head instead of outside mounted hydraulic motor. For better protection of connecting lines all hydraulic connections are mounted at the left and right side of upper head instead of at the front.
- Vibration free rotator due to unique construction with silent blocks.
- Enlarged pivot points for increased wear life. By having increased contact area pin fatigue is minimized and forces are better distributed.
- Better stress distribution and extended lifetime by applying a cushioned cylinder and bolt-on cutting edges as standard. These two features limits shell movement on the G300B Multi-Grapple instead of end-stops.

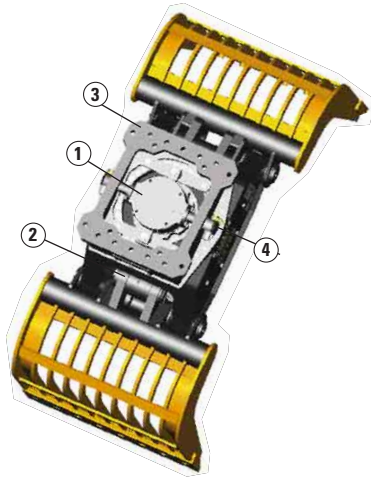
### Commonality

- Standardized drill pattern for better interchange ability of mounting brackets.
- ORFS hydraulic connections standard included for easy connection to Caterpillar machines.

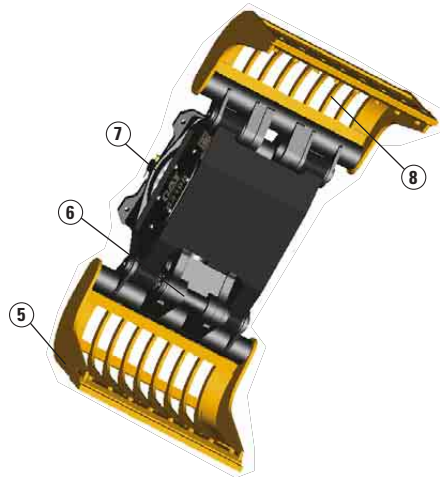
### Maintenance

- 100 hours service interval
- Maintenance free rotator
- Main components are easily accessible through large inspection covers.
- Easy assemble/disassemble of main components
- No special tools required

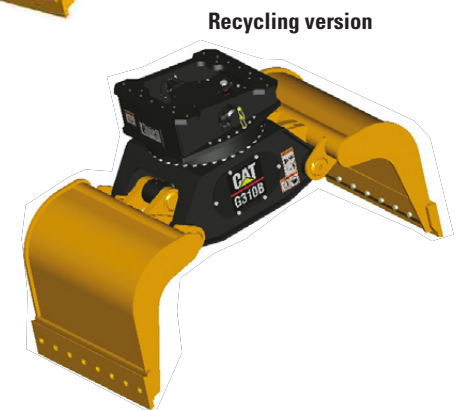
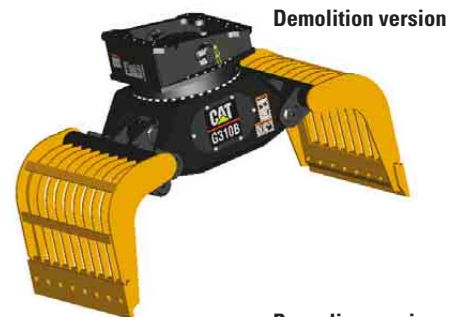
## Features



- 1 Maintenance free rotator for 360 degrees rotation
- 2 One fully protected cylinder
- 3 Standard drill pattern for bolt-on mounting brackets
- 4 Hydraulic connections positioned at the sides for optimal protection of hydraulic connection lines



- 5 Bolt-on cutting edges as standard
- 6 High quality bushings with lubrication grooves, hardened pins and dust seals
- 7 Large inspection covers
- 8 Two shell types available: Demolition and Recycling



# Tool Selection

Caterpillar Multi-Grapples give you the ability to match the machine to your application.

Grapple Application		Demolition	Recycling
<b>Demolition and Sorting applications at demolition sites</b>	Strip buildings or construction		
	Selective demolition		
	Sorting construction and demolition waste		
	Loading and unloading containers		
<b>Waste handling applications at Transfer/Recycling stations</b>	Extract recyclable from waste stream before transfer or landfilling		
	Cleaning sites, wharves		
	Loading and unloading containers (Or bins, loading trucks, hoppers, railcars)		

■ Very Good     
 ■ Good     
 ■ Not Recommended

# Specifications

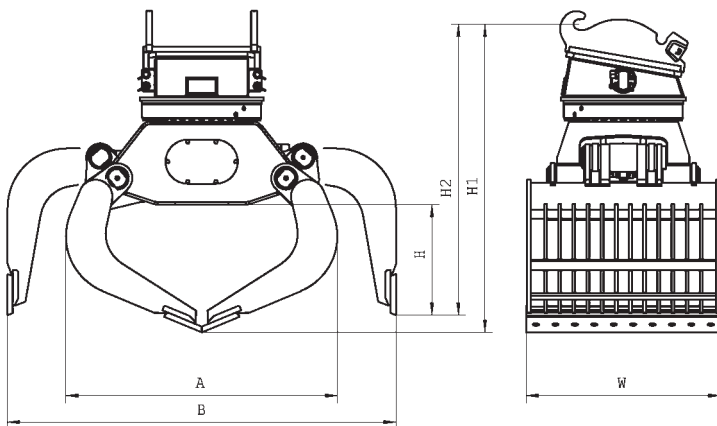
All dimensions and weights are approximate.

Specifications		G310B-R	G310B-D	G315B-R	G315B-D	G320B-R	G320B-D
Recommended carrier weight	metric ton	10-16	10-16	15-22	15-22	20-29	20-29
Capacity	Liters	400	375	600	550	800	750
Operating weight*	kg	980	990	1320	1330	1860	1870
Closing force	kN	37	37	54	54	68	68
Maximum pressure open/close	bar	350	350	350	350	350	350
Optimal flow open/close	l/min	60	60	90	90	120	120
Maximum pressure rotation	bar	320	320	320	320	320	320
Optimal flow rotation	l/min	25	25	25	25	25	25

\* Including bolt-on mounting bracket

Dimensions		G310B-R	G310B-D	G315B-R	G315B-D	G320B-R	G320B-D
<b>W</b> Width	mm	850	850	1000	1000	1100	1100
<b>A</b> Width closed	mm	1225	1245	1360	1375	1505	1540
<b>B</b> Width opened	mm	1800	1800	2000	2000	2200	2200
<b>H</b> Height	mm	520	520	570	570	625	625
<b>H1</b> Height closed*	mm	1435	1435	1540	1540	1695	1695
<b>H2</b> Height opened*	mm	1345	1345	1445	1445	1600	1600

\* Including bolt-on mounting bracket for CW quick coupler



# Work Tools Matching Guide

Choosing the proper Multi-Grapple can increase productivity and lower your cost per ton.

	Stick mm	Without Quick Coupler						With Quick Coupler					
		Grappels						Grappels					
		G310B-D	G315B-D	G320B-D	G310B-R	G315B-R	G320B-R	G310B-D	G315B-D	G320B-D	G310B-R	G315B-R	G320B-R
<b>312C</b> 500 mm shoes	2100 2500 3000												
<b>312C L</b> 600 mm shoes	2100 2500 3000												
<b>315C L</b> 500 mm shoes	1850 2250 2600 3100												
<b>315C L</b> 600 mm shoes	1850 2250 2600 3100												
<b>315C L</b> 700 mm shoes	1850 2250 2600 3100												
<b>318C</b> 600 mm shoes	1800 2250 2700 3200												
<b>318C</b> 700 mm shoes	1800 2250 2700 3200												
<b>318C N</b> 500 mm shoes	1800 2250 2700 3200												
<b>318C L</b> 600 mm shoes	1800 2250 2700 3200												
<b>318C L</b> 800 mm shoes	1800 2250 2700 3200												

	Stick mm	Without Quick Coupler						With Quick Coupler					
		Grappels						Grappels					
		G310B-D	G315B-D	G320B-D	G310B-R	G315B-R	G320B-R	G310B-D	G315B-D	G320B-D	G310B-R	G315B-R	G320B-R
<b>320C</b> Reach boom	1900 2500 2920												
<b>320C</b> ME boom	1900 2400 2920												
<b>320C</b> VA boom	1900 2400 2920												
<b>320C L</b> Reach boom	1900 2500 2920												
<b>320C L</b> ME boom	1900 2400 2920												
<b>320C L</b> VA boom	1900 2400 2920												
<b>320C LN</b> Reach boom	1900 2500 2920												
<b>320C LN</b> ME boom	1900 2400 2920												
<b>320C LN</b> VA boom	1900 2400 2920												
<b>320C S</b> Reach boom	1900 2400 2920												
<b>320C S</b> ME boom	1900 2400 2920												
<b>320C S</b> VA boom	1900 2400 2920												
<b>320C LU</b> Reach boom	2500 2920												

- Not available
- Working Range Full 360°
- Working Range only Front

# Work Tools Matching Guide

Choosing the proper Multi-Grapple can increase productivity and lower your cost per ton.

	Stick mm	Without Quick Coupler					With Quick Coupler						
		Grappels					Grappels						
		G310B-D	G315B-D	G320B-D	G310B-R	G315B-R	G320B-R	G310B-D	G315B-D	G320B-D	G310B-R	G315B-R	G320B-R
<b>322C L</b> Reach boom	2000												
	2500												
	2950												
HD 2950													
<b>322C L</b> ME boom	2000												
	2500												
<b>322C L</b> VA boom	2000												
	2500												
<b>322C LN</b> Reach boom	2000												
	2500												
	2950												
HD 2950													
<b>322C LN</b> ME boom	2000												
	2500												
<b>322C LN</b> VA boom	2000												
	2500												
<b>325C L</b> Reach boom	2000												
	2650												
	3200												
HD 3200													
<b>325C L</b> ME boom	2000												
	2500												
<b>325C L</b> VA boom	2000												
	2500												
<b>325C LN</b> Reach boom	2000												
	2650												
	3200												
HD 3200													
<b>325C LN</b> ME boom	2000												
	2500												
<b>325C LN</b> VA boom	2000												
	2500												

	Stick mm	Without Quick Coupler					With Quick Coupler						
		Grappels					Grappels						
		G310B-D	G315B-D	G320B-D	G310B-R	G315B-R	G320B-R	G310B-D	G315B-D	G320B-D	G310B-R	G315B-R	G320B-R
<b>M313C</b> DL 1 piece boom	2000												
	2300												
	2600												
<b>M313C</b> DL VA boom	2000												
	2300												
	2600												
<b>M313C</b> SSL 1 piece boom	2000												
	2300												
	2600												
<b>M313C</b> SSL VA boom	2000												
	2300												
	2600												
<b>M313C</b> SDL 1 piece boom	2000												
	2300												
	2600												
<b>M313C</b> SDL VA boom	2000												
	2300												
	2600												
<b>M315C</b> DL 1 piece boom	2100												
	2400												
	2600												
<b>M315C</b> DL VA boom	2100												
	2400												
	2600												
<b>M315C</b> SSL 1 piece boom	2100												
	2400												
	2600												
<b>M315C</b> SSL VA boom	2100												
	2400												
	2600												
<b>M315C</b> SDL 1 piece boom	2100												
	2400												
	2600												
<b>M315C</b> SDL VA boom	2100												
	2400												
	2600												
<b>M316C</b> DL 1 piece boom	2100												
	2400												
	2600												
<b>M316C</b> DL VA boom	2100												
	2400												
	2600												
<b>M316C</b> SSL 1 piece boom	2100												
	2400												
	2600												

- Not available
- Working Range Full 360°
- Working Range only Front

- DL** Dozer lowered
- SSL** 2 sets of stabilizer lowered
- SDL** Dozer and stabilizer lowered

			Without Quick Coupler						With Quick Coupler					
			Grappels						Grappels					
			Stick mm	G310B-D	G315B-D	G320B-D	G310B-R	G315B-R	G320B-R	G310B-D	G315B-D	G320B-D	G310B-R	G315B-R
<b>M316C</b> VA boom	SSL	2100												
		2400												
		2600												
<b>M316C</b> 1 piece boom	SDL	2100												
		2400												
		2600												
<b>M316C</b> VA boom	SDL	2100												
		2400												
		2600												
<b>M318C</b> 1 piece boom	DL	2200												
		2500												
		2800												
<b>M318C</b> VA boom	DL	2200												
		2500												
		2800												
<b>M318C</b> 1 piece boom	SSL	2200												
		2500												
		2800												
<b>M318C</b> VA boom	SSL	2200												
		2500												
		2800												
<b>M318C</b> 1 piece boom	SDL	2200												
		2500												
		2800												
<b>M318C</b> VA boom	SDL	2200												
		2500												
		2800												
<b>M322C</b> 1 piece boom	DL	2200												
		2500												
		2900												
<b>M322C</b> VA boom	DL	2200												
		2500												
		2900												
<b>M322C</b> 1 piece boom	SSL	2200												
		2500												
		2900												
<b>M322C</b> VA boom	SSL	2200												
		2500												
		2900												
<b>M322C</b> 1 piece boom	SDL	2200												
		2500												
		2900												
<b>M322C</b> VA boom	SDL	2200												
		2500												
		2900												

- Not available
- Working Range Full 360°
- Working Range only Front

### Special Applications – Ultra High Demolition (UHD)

Without Quick Coupler		G320B-D
330C L	Undercarriage	
	Standard	
	VG	
	Long Narrow	
	345B II	
345B L II	VG	
	Standard	
365B L II	Standard	
5090B L	Standard	

With Quick Coupler		G320B-D
330C L	Undercarriage	
	Standard	
	VG	
	Long Narrow	
	345B II	
345B L II	VG	
	Standard	
365B L II	Standard	
5090B L	Standard	

# G310B, G315B, G320B Multi-Grapples

**Caterpillar recommends falling object guards in applications where there is a possibility of falling objects.  
Please consult your Caterpillar dealer for these guards.**

HEHX2907 (06/2003) hr

Materials and specifications are subject to change without notice.  
Featured machines in photos may include additional equipment.  
See your Caterpillar dealer for available options.

[www.CAT.com](http://www.CAT.com)

© 2003 Caterpillar

**CATERPILLAR<sup>®</sup>**