

## FXV N Technical Data High Lift Pallet Truck

---

FXV 14 N/Li-Ion

FXV 14 N (i)/Li-Ion

FXV 16 N/Li-Ion

FXV 16 N (i)/Li-Ion



# FXV N High Lift Pallet Truck

## High up in narrow aisles

This specification sheet, which conforms to VDI guideline 2198, provides the technical values for the standard equipment only. Different tyres, other masts, additional equipment etc. may produce different figures.



					STILL			
					FXV 14 N/Li-Ion FXV 16 N/Li-Ion	FXV 14 N (i)/Li-Ion FXV 16 N (i)/Li-Ion		
Distinguishing marks	1.1	Manufacturer				STILL	STILL	
	1.2	Manufacturer's type designation				FXV 14 N/Li-Ion FXV 16 N/Li-Ion	FXV 14 N (i)/Li-Ion FXV 16 N (i)/Li-Ion	
	1.3	Drive				Electric	Electric	
	1.4	Operation				Seated	Seated	
	1.5	Rated capacity	Q	kg		1400/1600	1400 (2000)/1600 (2000)	
Weights	1.6	Load centre	C	mm		600	600	
	1.8	Load distance	X	mm		724 <sup>3</sup>	724 <sup>3</sup>	
	1.9	Wheelbase	y	mm		1597 <sup>3</sup>	1597 <sup>3</sup>	
	2.1	Service weight incl. battery		kg		1580 <sup>1</sup>	1499 <sup>1</sup>	
	2.2	Axle load with load		kg		1271/1909 <sup>1</sup>	1179/1920 <sup>1</sup>	
	2.3	Axle load without load		kg		1050/530 <sup>1</sup>	971/528 <sup>1</sup>	
	3.1	Tyres				Polyurethane	Polyurethane	
	3.2	Tyre size	drive end	∅ x l	mm	254 x 102	254 x 102	
	3.3	Tyre size	load end	∅ x l	mm	85 x 85 (2x85 x 60) <sup>2</sup>	85 x 85 (2x85 x 60) <sup>2</sup>	
Tyres/chassis	3.4	Support roller size		mm		2 x 140 x 50	2 x 140 x 50	
	3.5	No. of wheels (x = driven)				1 x + 1/2 (1 x + 1/4) <sup>2</sup>	1 x + 1/2 (1 x + 1/4) <sup>2</sup>	
	3.6	Track	drive end/load end	b <sub>10</sub> /b <sub>11</sub>	mm	541/380	541/380	
	4.2	Height	mast retracted	h <sub>1</sub>	mm		See mast table	
	4.3	Free lift		h <sub>2</sub>	mm		See mast table	
	4.4	Lift		h <sub>3</sub>	mm		See mast table	
	4.5	Height <sup>4</sup>	mast raised	h <sub>4</sub>	mm		See mast table	
	4.6	Initial lift		h <sub>5</sub>	mm	-	125	
	4.7	Height above overhead guard		h <sub>6</sub>	mm	2260	2260	
Dimensions	4.8	Seat height in terms of SIP		h <sub>7</sub>	mm	1024	1024	
	4.10	Height wheel arms		h <sub>8</sub>	mm	80	80	
	4.15	Fork height lowered		h <sub>13</sub>	mm	86	86	
	4.19	Overall length		l <sub>1</sub>	mm	2187 <sup>1</sup>	2187 <sup>1</sup>	
	4.20	Length including forks		l <sub>2</sub>	mm	1037 <sup>1</sup>	1037 <sup>1</sup>	
	4.21	External width		b <sub>1</sub>	mm	820	820	
	4.22	Fork dimensions		s/e/l	mm	71/180/1150	71/180/1150	
	4.23	Wheel dimensions		s/e/l	mm	75/150/1115	75/150/1115	
	4.24	Width fork carriage		b <sub>3</sub>	mm	780	780	
	4.25	External fork width		b <sub>5</sub>	mm	560	560	
	4.26	Clearance between wheel arms		b <sub>4</sub>	mm	255	255	
	4.32	Ground clearance, centre of wheel base		m <sub>2</sub>	mm	30	20	
	4.34	Working aisle width with 800 x 1200 pallet lengthways		A <sub>st</sub>	mm	2606 <sup>1</sup>	2606 <sup>1</sup>	
	4.35	Turning radius		W <sub>a</sub>	mm	1783	1783	
	Performance data	5.1	Driving speed	with/without load		km/h	10/10	10/10
5.2		Lift speed	with/without load		m/s	0.144/0.447	0.144/0.447	
		Lift speed, initial lift	with/without load		m/s	0.045/0.088	0.045/0.088	
5.3		Lowering speed, initial lift	with/without load		m/s	0.076/0.072	0.076/0.072	
		Lowering speed	with/without load		m/s	0.343/0.342	0.343/0.342	
5.8		Max. gradeability	without/with load/2,000 kg on initial lift		%	20/11/-	20/11/9	
5.10	Service brake					electro-magnetic	electro-magnetic	
Electric motor	6.1	Drive motor, capacity S2 = 60 min			kW	3.0	3.0	
	6.2	Lift motor capacity at S3 = 10%			kW	3.2	3.2	
	6.3	Battery in accordance with DIN 43531/35/36 A, B, C, no					3PZS	3PZS
	6.4	Battery voltage/rated capacity K <sub>5</sub>			V/Ah	24/300 Li-Ion: 23/205	24/300 Li-Ion: 23/205	
	6.5	Battery weight ±5% (variation by manufacturer)			kg	290	290	
	6.6	Energy consumption in accordance with VDI cycle			kWh/1h	1.65	1.65	
Other	8.1	Drive control				AC control	AC control	
	10.7	Sound pressure level (driver's ear)			dB(A)	65	65	
		Body vibrations acceleration in accordance with EN 13059			m/s <sup>2</sup>	0.56	0.56	

<sup>1</sup> For 3PzS battery

<sup>2</sup> With tandem rollers

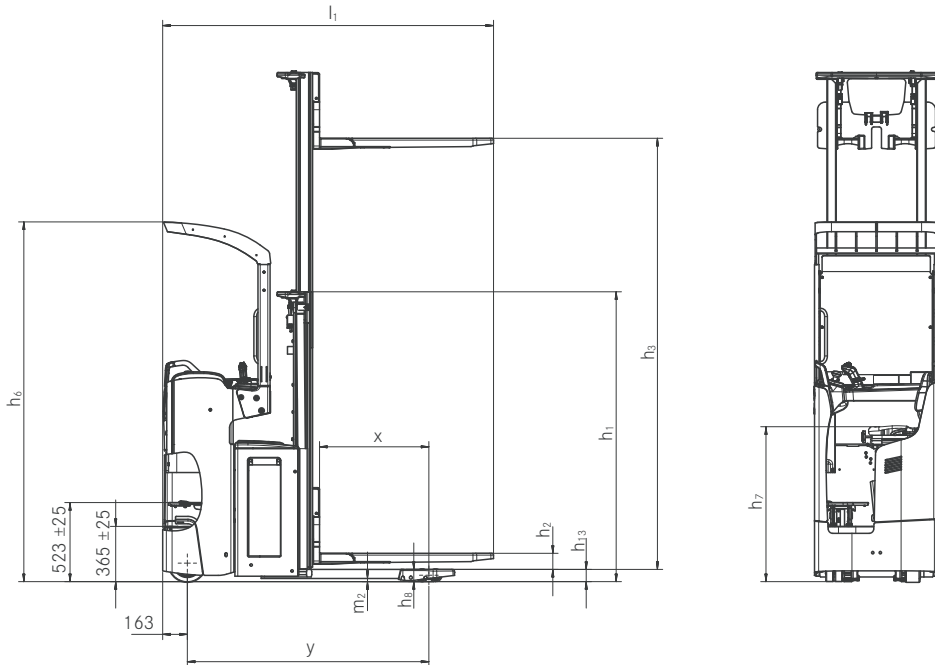
<sup>3</sup> Initial lift lowered

<sup>4</sup> With load rest + 566 mm

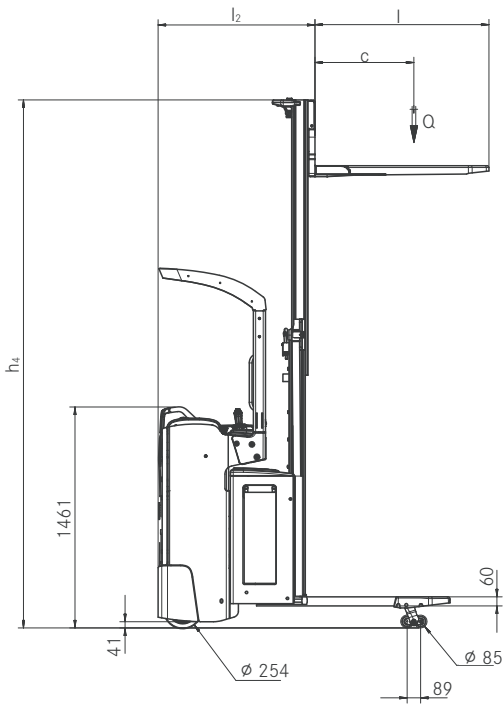
## Mast Table

			Telescopic							HiLo					Triplex			
			h <sub>1</sub>	h <sub>1</sub> <sup>1</sup>	h <sub>2</sub>	h <sub>3</sub>	h <sub>4</sub>											
FXV 14 N	Closed height	h <sub>1</sub>	mm	1415	1665	1915	2115	2365	2565	2815	1415	1665	1915	2115	2365	1915	2065	2265
	Closed mast height with free lift	h <sub>1</sub> <sup>1</sup>	mm	1490	1740	1990	2190	2440	2540	2890								
	Free lift	h <sub>2</sub>	mm	150	150	150	150	150	150	150	895	1145	1395	1595	1845	1395	1545	1745
	Lift	h <sub>3</sub>	mm	1844	2344	2844	3244	3744	4144	4644	1844	2344	2844	3244	3744	4266	4716	5316
	Maximum height <sup>4</sup>	h <sub>4</sub>	mm	2364	2864	3364	3764	4264	4664	5164	2364	2864	3364	3764	4264	4786	5236	5836
FXV 16 N	Closed height	h <sub>1</sub>	mm	1415	1665	1915	2115	2365	2565	2815	1415	1665	1915	2115	2365	1915	2065	2265
	Closed mast height with free lift	h <sub>1</sub> <sup>1</sup>	mm	1490	1740	1990	2190	2440	2540	2890								
	Free lift	h <sub>2</sub>	mm	150	150	150	150	150	150	150	895	1145	1395	1595	1845	1395	1545	1745
	Lift	h <sub>3</sub>	mm	1844	2344	2844	3244	3744	4144	4644	1844	2344	2844	3244	3744	4266	4716	5316
	Maximum height <sup>4</sup>	h <sub>4</sub>	mm	2364	2864	3364	3764	4264	4664	5164	2364	2864	3364	3764	4264	4786	5236	5836

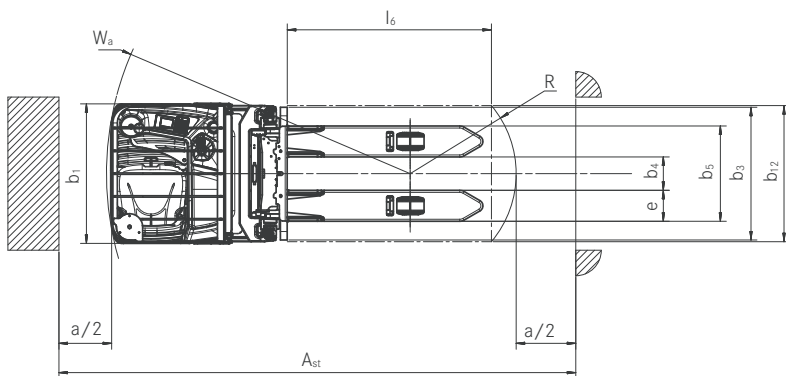
FXV N High Lift Pallet Truck  
 Technical Drawings



Side view



Side view



Top view

FXV N High Lift Pallet Truck  
Detailed Photos



Up to 1,600 kg load capacity and lift heights of up to 5,316 mm



Best visibility of the fork tips for high turnover performance and fast pallet stacking



Always on the safe side thanks to the standard overhead guard



Optional Joystick 4Plus for lift, lowering and drive control without changing grip



Battery change over the side as standard for highest availability and ergonomics



Optional automatic level compensation for bumpy floors and best driving characteristics

FXV N High Lift Pallet Truck  
High up in narrow aisles



## FXV N High Lift Pallet Truck High up in narrow aisles

---

**Top performance:** Maximum lift height of up to 5,316 mm and driving speeds (up to 10 km/h)

**Top precision:** Joystick 4Plus and free view of the fork tips

**Maximum availability:** Battery change over the side and optional Li-Ion technology



High up with flexible and innovative power – that is the credo for the energy efficient FXV 14/16 N high lift stacker. It is one of the top performers in its class and lifts up to 1,600 kg at impressive speed up to over five metres. The high top speed of 10 km/h goes hand in hand with optimal safety: The cornering speed is automatically reduced and can optionally be dynamically adjusted to the current lift height.

This compact high lift stacker is especially flexible in the choice and arrangement of its controls. STILL FXV 14/16 N is either available with a steering knob or a steering wheel, which can be mounted on the left hand or on the right hand side. In combination with the fixed joystick the truck is intuitively and sensitively controlled, at even higher comfort with the optional Joystick 4Plus.

## Extensive Equipment

---

### Power

---

- High up: Different mast types up to 5,316 mm
- Effective load handling: Driving speed up to 10 km/h
- Enough energy for multi-shift applications: High battery capacity of up to 500 Ah
- Full energy: Maintenance free 3-kW, 24-V rotary current drive motor
- Safe load handling thanks to robust drive gear with standard level compensation
- Always available: The lithium-ion battery bundles much energy and can be opportunity charged or completely charged at any time
- The right programme for any situation: ECO, BOOST or Blue-Q – from maximum turnover to maximum efficiency

### Precision

---

- Precise handling of all functions without changing grip of the joystick
- Fatigue free work: Smooth and precise steering
- Compact and agile: Easy work in tight spaces and in narrow aisles
- Sensitive and intuitive control with proportional valve technology for lifting and lowering
- Everything in sight at all times: Display indicates battery condition, date and time

### Ergonomics

---

- Shock absorption on bumpy floors by the dampened workplace
- Maximum operator comfort thanks to height-adjusting foot plate
- Easy control of all functions without changing grip with the optional Joystick 4Plus
- Ergonomic and intuitive control: Optionally available with a steering wheel or a steering knob
- Always in service: Easy access to the maintenance points and quick battery change over the side
- Individual adjustments: Adjustable steering forces and reverse steering

### Compactness

---

- High pallet turnover: Flexible use thanks to compact dimensions
- Optimum use of warehouse space: Truck width only 820 mm

### Safety

---

- High cornering safety: Curve Speed Control automatically adjusts the cornering speed to the steering angle
- High stability thanks to lift height-controlled speed reduction
- High stability on uneven floors thanks to standard automatic level compensation
- Safe access thanks to large step and grab handle as well as low access height
- Versatile and flexible access control by FleetManager 4.x

### Environmental Responsibility

---

- Up to seven per cent energy saving at the touch of a button without obstructing performance: Blue-Q efficiency mode
- Low operation costs: Low energy consumption and long maintenance intervals
- Low noise emission due to very silent lift and drive motor
- Re-usable: Over 95 per cent of the used materials are recyclable

# FXV N High Lift Pallet Truck

## Equipment Variants



	FXV 14 N (i)	FXV 16 N (i)	
General	Impact-absorbing driver's seat	●	●
	Height-adjusting foot plate	●	●
	Colour display and control unit	●	●
	Integrated storage compartments	●	●
	Fully electric steering	●	●
	Fully electric steering with reverse steering	○	○
	Hydraulic controls by fixed joystick	●	●
	Hydraulic control by Joystick 4Plus	○	○
	Steering wheel left hand side	●	●
	Steering knob left hand side	○	○
	Powerful rotary current drive motor	●	●
	Cold store version	○	○
	Accessory bar on left side, right side or both sides	○	○
	DIN A4 writing pad	○	○
	Preparation for data terminal	○	○
	Data transfer by Bluetooth or GPRS	○	○
	Low access and grab handle	●	●
Mast	Tele mast	○	○
	HiLo mast	○	○
	Triplex mast	○	○
	Mast protection grid	●	●
	Polycarbonate mast screen	○	○
Tyres	Initial lift	○	○
	Single Polyurethane rollers	●	●
	Polyurethane tandem rollers	○	○
	Lubricable Polyurethane/tandem rollers	○	○
	Polyurethane drive wheel	●	●
	Threaded Polyurethane drive wheel	○	○
	Polyurethane drive wheel, soft	○	○
Safety	Solid rubber drive wheel	○	○
	Threaded solid rubber drive wheel	○	○
	Automatic level compensation	●	●
	Access (key)	●	●
	Access (Digicode)	○	○
	FleetManager access (Digicode)	○	○
	FleetManager access (STILL chip/customer card/customer chip)	○	○
	FleetManager: Shock detect	○	○
	Curve Speed Control: Cornering speed reduction	●	●
	Lift height controlled speed reduction	●	●
Speed limit to 8 km/h	○	○	
Battery	Load backrest	○	○
	Overhead guard	●	●
	Battery change over the side by roller track	●	●
	Battery compartment for battery capacity up to 375 Ah	●	●
	Battery compartment for battery capacity up to 500 Ah	○	○
Li-Ion battery 205 Ah	○	○	
Li-Ion battery 410 Ah	○	○	

● Standard ○ Optional — Not available

# STILL



STILL Materials Handling Ltd  
Aston Way  
Leyland Preston  
PR26 7UX  
Tel.: +44 (0)845 603 6827

STILL Materials Handling Ltd  
Jacks Way  
Hill Barton  
Business Park  
Clyst St. Mary  
Exeter  
EX5 1FG  
Tel.: +44 (0)345 603 6827  
info@still.co.uk

**For further information please visit:**  
**[www.still.co.uk](http://www.still.co.uk)**



STILL is certified in the following areas: Quality management, occupational safety, environmental protection and energy management.



first in intralogistics