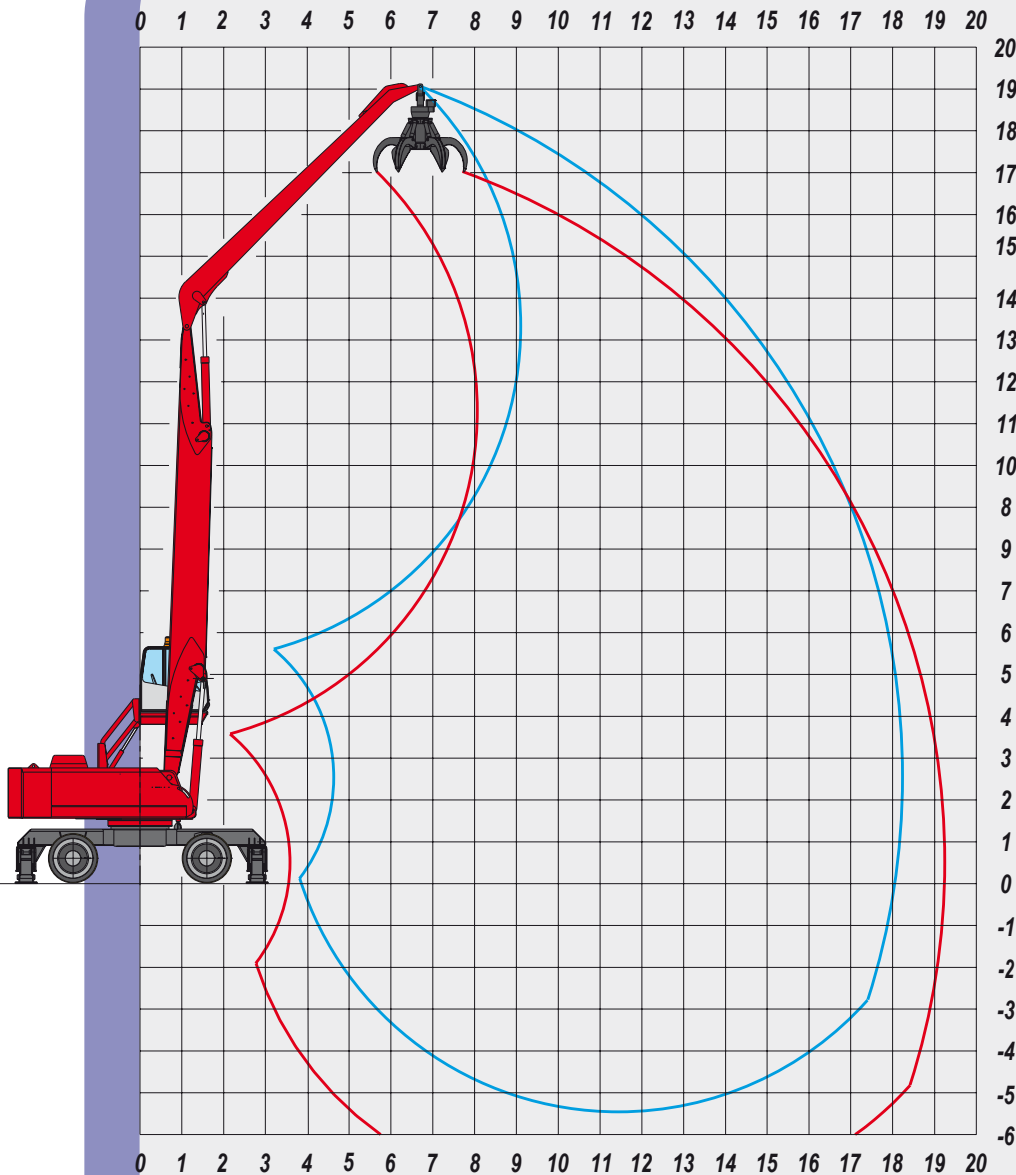


**EXP 5055**



# EXP 5055

All technology at operator's service



## WORKING DIAGRAM

### DF18 CONFIGURATION

**Straight boom**  
**10.80 m**

**Industrial straight  
stick**  
**8.00 m**

## SUGGESTED ORANGE PEEL

FOR SCRAP

MODEL	RV 600	RV 800
OPENING (m)	2,11	2,32
CAPACITY (l)	600	800
WEIGHT WITHOUT ROTATOR (kg)	1490	1600

**LIFTING CAPACITIES ON HOOK IN TONS**

LIFTING RANGE (m)

HEIGHT METRES	CONFIGURATION	5,5			8,0			10,5			13,0			15,5			18,2		
15.0								<b>7,03*</b>	7,03*	6,12	<b>5,16*</b>	5,16*	4,49						
12.5								<b>7,98*</b>	7,98*	6,80	<b>6,81*</b>	6,22	4,66						
10.0								<b>8,25*</b>	8,25*	6,59	<b>6,96*</b>	6,10	4,57	<b>5,73</b>	4,36	3,27			
7.0					<b>10,83*</b>	10,83*	9,43	<b>8,62*</b>	8,27	6,20	<b>7,12*</b>	5,80	4,35	<b>5,58</b>	4,22	3,16			
5.5		<b>17,97*</b>	17,97*	14,42	<b>12,03*</b>	11,25	8,44	<b>9,09*</b>	7,52	5,64	<b>7,08</b>	5,38	4,04	<b>5,35</b>	3,99	2,99			
2.5		<b>6,88*</b>	6,88*	5,99	<b>12,82*</b>	9,62	7,21	<b>8,94</b>	6,72	5,04	<b>6,62</b>	4,94	3,70	<b>5,09</b>	3,74	2,80	<b>3,97</b>	2,85	2,14
0.0		<b>4,43*</b>	4,43*	3,85	<b>11,66</b>	8,47	6,36	<b>8,25</b>	6,05	4,54	<b>6,23</b>	4,55	3,41	<b>4,87</b>	3,52	2,64			
-2.5					<b>11,10</b>	7,94	5,96	<b>7,84</b>	5,66	4,24	<b>5,96</b>	4,30	3,22	<b>4,73</b>	3,38	2,54			

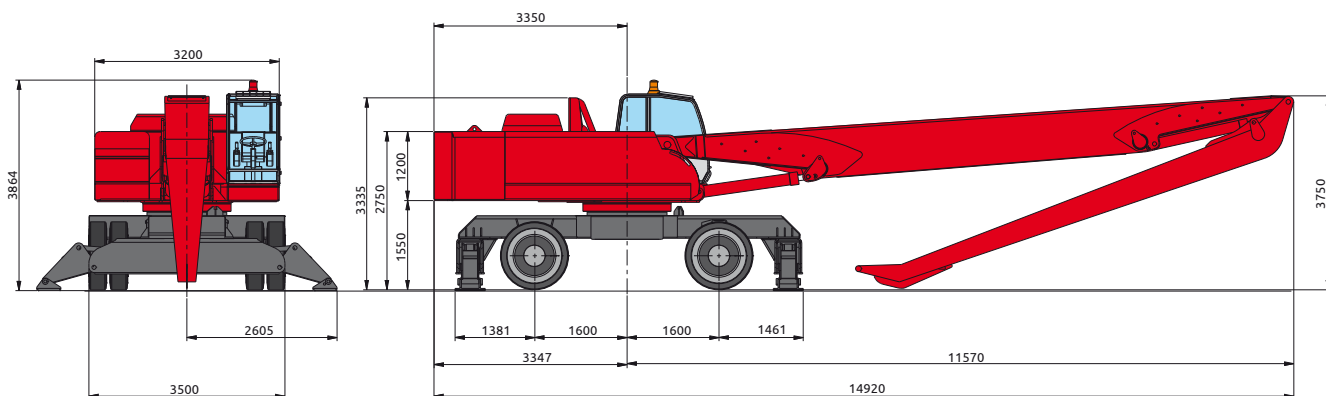
- LIFTING CAPACITIES ON LONGITUDINAL AXIS
- LIFTING CAPACITIES ON 360° WITHOUT SAFETY FACTOR
- LIFTING CAPACITIES ON 360° ACCORDING WITH ISO 10567 STANDARD

\* = HYDRAULIC LIMIT

LIFTING CAPACITIES ARE ON HOOK WITHOUT GRABS, MACHINE STATIC, LEVEL SOLID GROUND, WITH AXLE LOCKED.

OPERATING WEIGHT WITH 4 OUTRIGGERS, FULL RUBBER TYRES, STRAIGHT BOOM 10.8 m, INDUSTRIAL STICK 8.0. m, SRV 806 ORANGE PEEL GRAB WITH ROTATOR.

**DIMENSIONS**

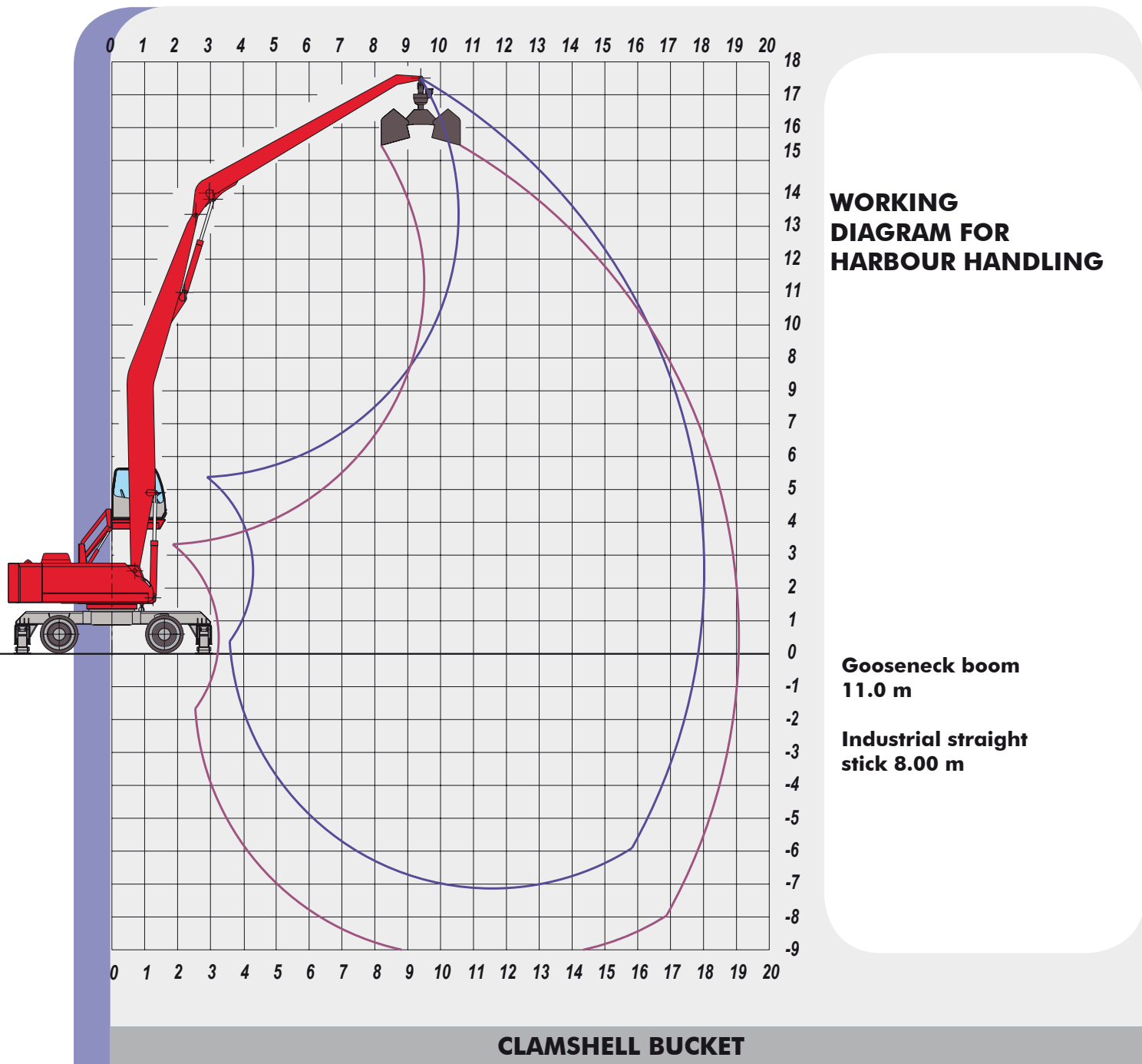


OPERATING WEIGHT 56.000 KG

The new 500 series can stand up to any comparison

# EXP 5055

All technology at operator's service



MODEL	R 40/1200	R 40/1500	R 40/1700	R 34/1000	R 34/1300	R 34/1500
OPENING (m)	2460	2460	2460	2400	2400	2400
CAPACITY (l)	1260	1580	1800	1330	1750	2000
WEIGHT WITHOUT ROTATOR (kg)	1160	1270	1340	1320	1440	1520

**LIFTING CAPACITIES ON HOOK IN TONS**

LIFTING RANGE (m)

HEIGHT METRES	CONFIGURATION	5,5			8,0			10,5			13,0			15,5			18,0		
15.0								6,14*	6,14*	5,34									
12.0								6,67*	6,67*	5,81	5,89*	5,89	4,79						
9.0								7,03*	7,03*	6,12	6,05*	6,05*	4,62	5,36*	4,42	3,31			
6.0					9,85*	9,85*	8,57	7,70*	7,70*	5,99	6,40*	5,66	4,25	5,51*	4,15	3,11			
3.0		11,43*	11,43*	9,95	11,45*	10,01	7,51	8,48*	6,95	5,21	6,77	5,08	3,81	5,17	3,81	2,86	4,03	2,90	2,17
0.0		5,69*	5,69*	4,95	11,61	8,42	6,31	8,25	6,04	4,53	6,21	4,53	3,40	4,84	3,49	2,62			
-3.0		6,48*	6,48*	5,64	10,89	7,73	5,80	7,70	5,51	4,14	5,85	4,18	3,14	4,63	3,28	2,46			
-6.0					10,29*	7,64	5,73	7,54	5,36	4,02	5,74	4,07	3,06	4,60	3,26	2,44			

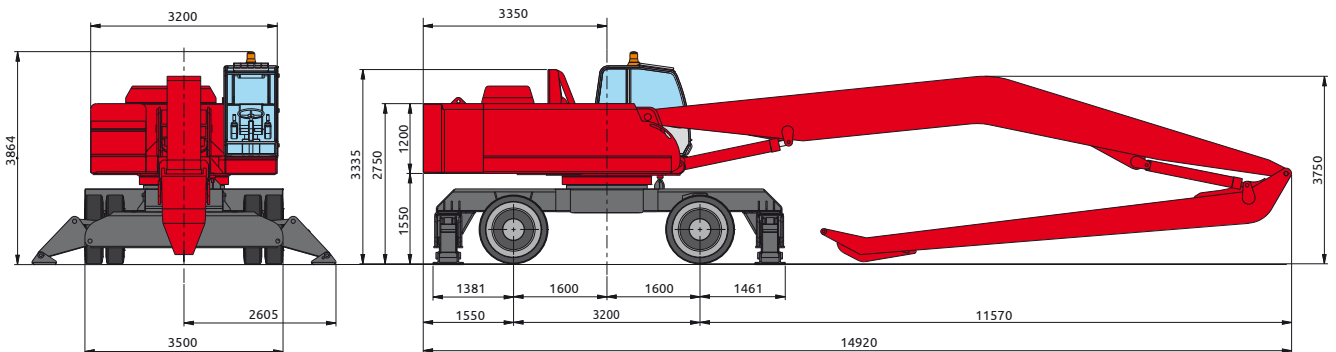
- LIFTING CAPACITIES ON LONGITUDINAL AXIS
- LIFTING CAPACITIES ON 360° WITHOUT SAFETY FACTOR
- LIFTING CAPACITIES ON 360° ACCORDING WITH ISO 10567 STANDARD

\* = HYDRAULIC LIMIT

LIFTING CAPACITIES ARE ON HOOK WITHOUT GRABS, MACHINE STATIC, LEVEL SOLID GROUND, WITH AXLE LOCKED.

OPERATING WEIGHT WITH 4 OUTRIGGERS, FULL RUBBER TYRES, GOOSENECK BOOM 11.0 m, INDUSTRIAL STICK 8. m, SR 34/1500 CLAMSHELL BUCKET WITH ROTATOR..

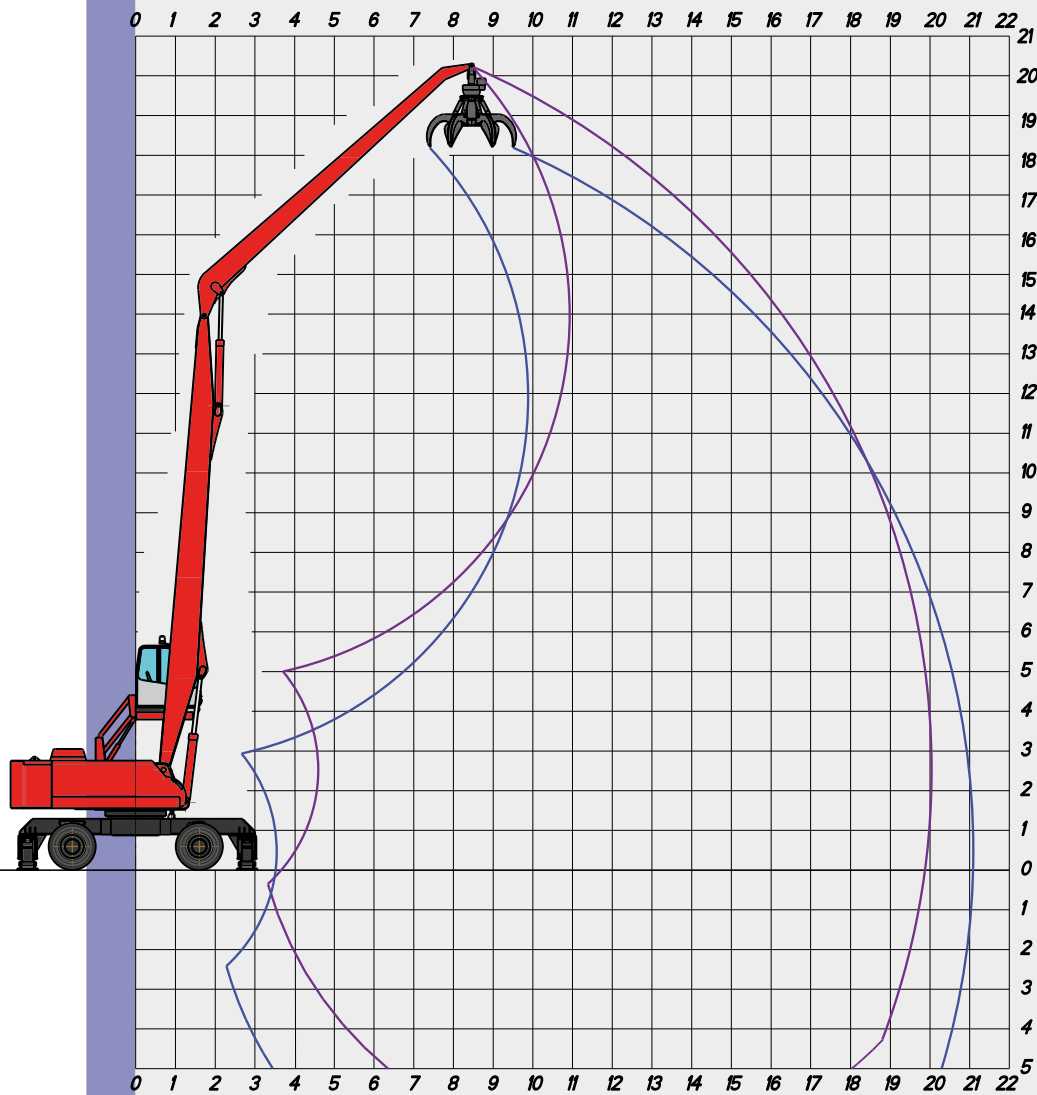
**DIMENSIONS**



OPERATING WEIGHT 56.000 KG

# EXP 5055

All technology at operator's service



## WORKING DIAGRAM FOR SCRAP HANDLING

**Straight boom  
11,5 m**

**Industrial straight  
stick 9,20 m**

### SUGGESTED ORANGE PEEL GRABS

FOR SCRAP

MODEL	RV 600	RV 800
OPENING (m)	2,11	2,32
CAPACITY (l)	600	800
WEIGHT WITHOUT ROTATOR (kg)	1490	1600

**LIFTING CAPACITIES ON HOOK IN TONS**

LIFTING RANGE (m)

HEIGHT METRES	CONFIGURATION	6,0			9,0			12,0			15,0			18,0			20,0		
18,0								5,12	5,12	4,45									
								5,12*	5,12*	4,45									
15,0								6,54	6,54	5,46	4,77*	4,66	3,49						
								6,54*	6,54*	5,69	4,77*	4,77*	4,15						
12,0								7,17*	7,17*	5,41	5,93*	4,71	3,53						
								7,17*	7,17*	6,23	5,93*	5,93*	5,16						
9,0								7,37*	6,84	5,13	5,99*	4,51	3,38	4,20	3,04	2,28			
								7,37*	7,37*	6,42	5,99*	5,99*	5,21	4,95*	4,95*	4,31			
6,0					10,29*	9,82	7,36	7,72*	6,20	4,65	5,64	4,17	3,13	4,04	2,88	2,16			
					10,29*	10,29*	8,96	7,72*	7,72*	6,71	6,11*	6,11*	5,31	4,94*	4,94*	4,30			
3,0		17,88*	13,94	10,45	11,11*	8,22	6,16	7,36	5,41	4,06	5,21	3,75	2,81	3,82	2,66	2,00	3,14	2,14	1,59
		17,88*	17,88*	15,56	11,11*	11,11*	9,66	8,00*	8,00*	6,96	6,16*	6,16*	5,36	4,85*	4,85*	4,22	4,01*	4,01*	3,49
0,0		5,45*	5,45*	4,74	9,67	6,84	5,13	6,60	4,69	3,52	4,80	3,36	2,52	3,61	2,46	1,85			
		5,45*	5,45*	4,74	11,22*	11,22*	9,76	7,97*	7,97*	6,93	6,01*	6,01*	5,23	4,57*	4,57*	3,98			
-3,0		5,72*	5,72*	4,98	8,88	6,11	4,58	6,12	4,23	3,17	4,52	3,09	2,32	3,48	2,34	1,75			
		5,72*	5,72*	4,98	10,24*	10,24*	8,91	7,40*	7,40*	6,44	5,49*	5,49*	4,78	3,93*	3,93*	3,42			

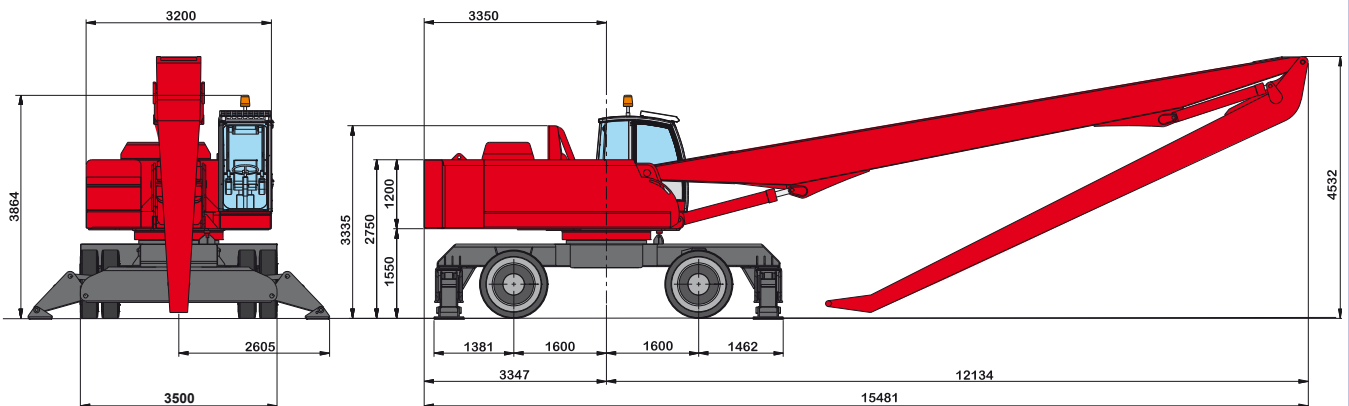
- LIFTING CAPACITIES ON LONGITUDINAL AXIS
- LIFTING CAPACITIES ON 360° WITHOUT SAFETY FACTOR
- LIFTING CAPACITIES ON 360° ACCORDING WITH ISO 10567 STANDARD

\* = HYDRAULIC LIMIT

LIFTING CAPACITIES ARE ON HOOK WITHOUT GRABS, MACHINE STATIC, LEVEL SOLID GROUND, WITH AXLE LOCKED.

OPERATING WEIGHT WITH 4 OUTRIGGERS, FULL RUBBER TYRES, STRAIGHT BOOM 11.5 m, INDUSTRIAL STICK 9.2 m, SRV 805 ORANGE PEEL GRAB WITH ROTATOR.

**DIMENSIONS**



OPERATING WEIGHT 58.000 KG

# TECHNICAL DATA

## DIESEL ENGINE

CD 7.8 L6 T4 - TIER 4f - Ecological with catalytic converter DVERT® and emissions controlled with electronically controlled injection - 6 cylinders in-line - turbocharged with intercooler - common rail - direct injection - water cooled - electric starting system 24 V

Displacement	7800 cm <sup>3</sup>
Power:	220 kW (299 CV) @ 2000 rpm
Max torque:	1260 Nm @ 1450 rpm
Tank capacity:	460 l

## HYDRAULIC SYSTEM

2 variable displacement axial piston pumps with oil flow adjustment according to the load requirements and with electronic engine speed sensing regulation.

Max Flow:	640 l/min
Max. hydr. pressure:	330 bar
Hydraulic tank capacity:	420 l
Hydraulic circuit capacity:	570 l
Gear pump for joystick:	
Max pressure:	30 bar
Max. flow:	22 l/min
Gear pump for brakes and steering:	
Max pressure:	145 bar
Max. flow:	44 l/min
Gear pump for auxiliary:	
Max pressure:	120 bar
Max. flow:	44 l/min

Hydraulic oil cooling by means aluminium large mesh heat exchange combined with engine radiator. LOAD SENSING system distributor block with simultaneous movements independent of the load and without interaction with synchronised control of all functions.

## TRAVEL

Hydrostatic with 4 wheels drive and with an powershit gearbox and an hydraulic motor that offer uninterrupted power transmission over the whole speed range. Travel controlled by two separate foot pedals (one for each direction).

Travel speed (in both direction):

Travel speed (in both directions) Working speed:	da 0 a 6 Km/h
Travel speed:	da 0 a 18 Km/h

Differential axles 3.50 mt wide with planetary reduction gears on the hubs.

Braking valve integrated on the hydraulic motor.

## STEERING

Hydraulic steering system powered by an independent pump.

Circuit incorporates a pre-calibrated safety valve.

The floating steering axle can be hydraulically locked from the cabin in any position.

## BRAKES

SERVICE BRAKES: wet, maintenance free multidisk brakes into rear axle via foot pedal.

PARKING AND EMERGENCY BRAKES: multidisk spring applied/pressure released parking brakes integrated into gear box.

## TYRES

8 full rubber tyres "SUPERELASTIC" front and rear 14.00 x 24

## BOOMS

For dimensions see each model.

## SLEWING

Extra large 3,20 m upperstructure mounted on a high resistance double row ball bearing ring with internal teeth. Unlimited rotation in both directions by means of 2 axial piston hydraulic motors with integrated control valve, fitted to double stage reduction gear with oil bath gears. Anti-shock valves protect the system.

Max slewing speed:	8 rpm
Overall rotating radius:	3,40 m

## OPERATOR'S CAB

Hydraulically operated raising driver's cab mounted on a parallelogram linkage (vertical raising on request) installed on silent block with large windows of tinted heat resistant safety glass; front sliding window, and lateral opening window. Winter heating and air conditioned as standard. Radio preset, Double windscreen wiper with washer.

"GRAN COMFORT" operator's seat with shock absorbing suspension, headrest, lumbar support, belt winder, electric seat heating device and armrests adjustable height and angle. Many possibilities of adjustment according to operator's weight and size with joysticks incorporated in its arms.

AUTO-IDLE electronic accelerator with two automatic preselected rpm.

The instrumentation includes: Engine speed indicator, fuel level, water thermometer.

Display shows: hour counter, hydraulic oil temperature, Volt, oil engine pressure, fuel consumption, engine diagnostics, and maintenance program.

Warning lights showing: air cleaner and oil filter clogging, park brake, low fuel, brakes failure, lights, hydraulic oil low level.

## CONTROLS

n° 2 electronically controlled joysticks to carry out four operations each with electric pushbuttons incorporated

Electro switch for grab rotator and

Electro switch for outriggers.

Electro switch for magnet (if installed)

Electro hydraulic devices for controlling gear box, parking brakes, hydraulic raising of the cab, front axle oscillation lock.

## SOUND LEVEL

SOUND LEVELS (EEC Directive 2000/14/CE)

Inside cab LpA 79 dB (A)

## ELECTROMAGNETIC COMPATIBILITY

In accordance with EEC Directive 2004/108/CE

## OVERLOAD WARNING DEVICE

In accordance with EEC DIRECTIVES 2006/42/CE this device provides to check the crane stability while loading in accordance with loads and distances (as standard).

Optical warning advise danger and conditions locking movement when the stability limits are reached. Visualising of the lifting charge and the liftable charge limit, in each position.



Viale delle industrie, 9  
45100 ROVIGO - ITALY  
phone +39 0425 474833 r.a.  
fax +39 0425 475548  
www.solmec.it  
solmec@solmec.it