

Technical sheet

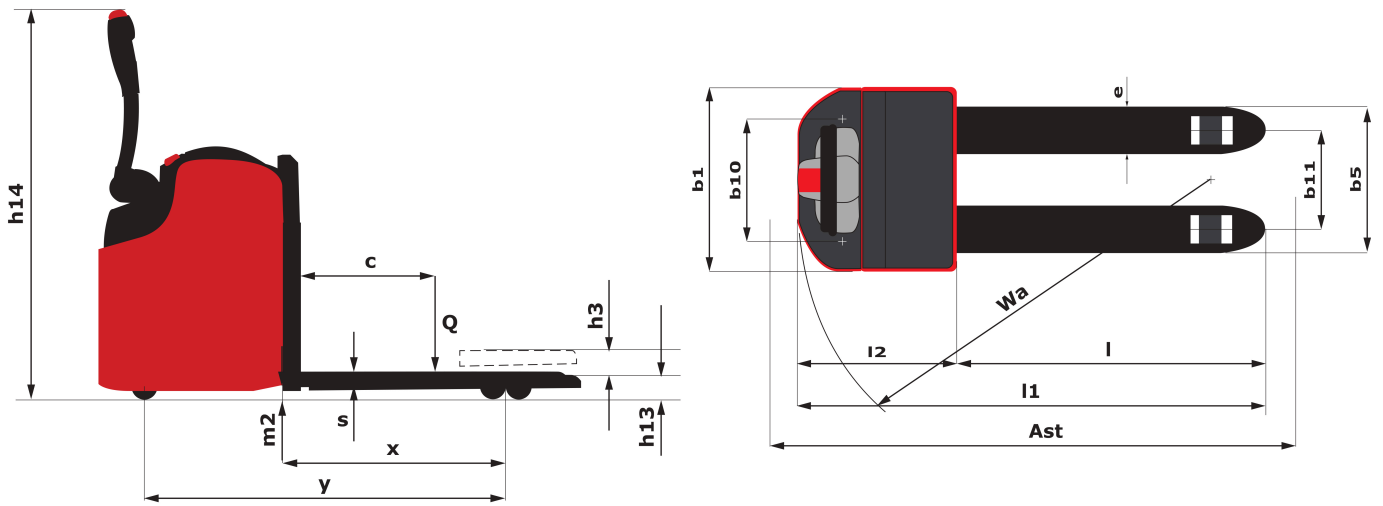
EP 15

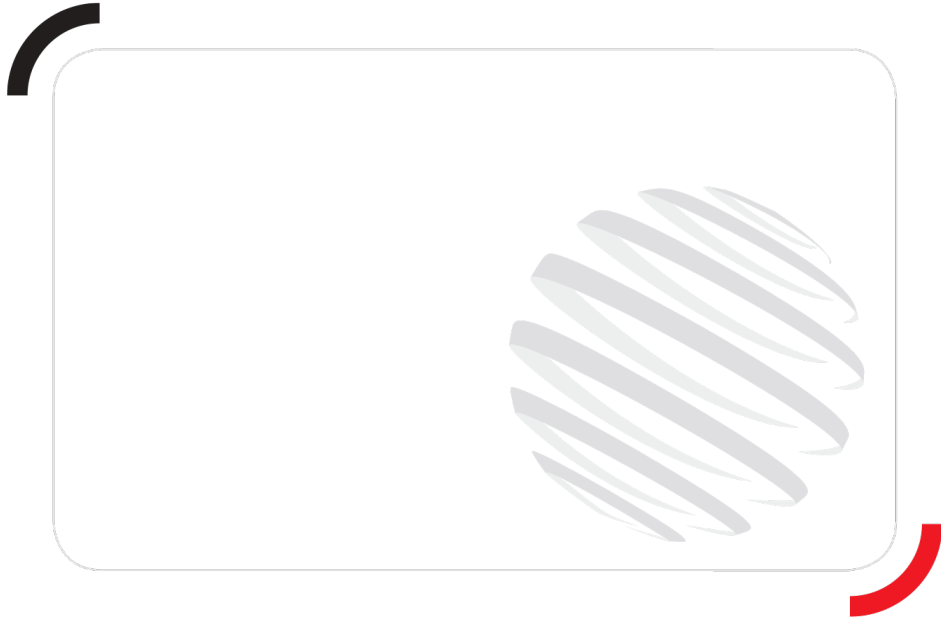
Warehousing Equipment



Technical characteristics		Metric	Imperial
1.1	Manufacturer	Manitou	Manitou
1.2	Model	EP 15	EP 15
1.3	Type of traction	Electric	Electric
1.4	Type of operation	Stand Up	Stand Up
1.5	Q - Rated capacity	1500 kg	3300 lbs
1.6	c - Center of gravity of load	600 mm	0.20 in
1.8	x - Distance from the load bearing surface to the centre of the front axle	960 mm	37.80 in
1.9	y - Wheelbase	1280 mm	50.52 in
Weight			
2.1	Weight of truck in working order	220 kg	484 lbs
Wheels			
3.1	Tyre equipment: bandage (V), PPS (SE), inflatable tyre (L)	Polyurethane	Polyurethane
3.2	Size of front wheels	1x(210x70mm)	1x(210x70mm)
3.3	Size of rear wheels	80x64mm	80x64mm
3.4	Size of caster wheels	(70x40mm)	(70x40mm)
3.5	Number of front wheels (x)	3 / 4	3 / 4
3.6	b10 - Front track	0.40 mm	1.33 in
3.7	b11 - Rear track	0.40 mm	1.31 in
Dimensions			
4.19	l1 - Total length	1690 mm	66.48 in
4.20	l2 - Length to fork heel	520 mm	20.40 in
4.21	Overall length - Single/twinned wheels	570 mm / -	22.32 in / -
4.22	e / s / l - Fork dimensions	160 x 50 x 1150	3.77 x 0.52 x 0.16
4.33	Ast - Aisle width for 1000 x 1200 pallet widthwise	1900 mm	74.76 in
4.35	Wa - Turning radius	1400 mm	55.08 in
Performances			
5.1	Speed of travel laden / unladen	4.50 km/h / 4.90 km/h	2.80 mph / 3.04 mph
5.2	Lifting speed laden / unladen	0.05 m/s / 0.06 m/s	0.16 ft/s / 0.19 ft/s
5.3	Lowering speed laden / unladen	0.04 m/s / 0.05 m/s	0.13 ft/s / 0.15 ft/s
5.7	Maximum ramp laden / unladen	6 % / 15 %	6 % / 15 %
5.10	Service brake	Electromagnetic	Electromagnetic
Engine			
6.1	Drive motor power rating	0.65 kW	0.65 kW
6.2	Lift motor power	0.80 kW	0.80 kW
6.4	Battery voltage/capacity	12 V / 70 Ah	12 V / 70 Ah
7.2	Useful power	0.80 kW	0.80 kW

Dimensional drawings





Siège Social
430 rue de l'Aubinière - 44150 Ancenis Cedex - France
Tel: +33(0)2 40 09 10 11 - Fax: +33 (0)2 40 09 10 97
www.manitou.com



This brochure describes versions and configuration options for Manitou products which may be fitted with different equipment. The equipment described in this brochure may be standard, optional or not available depending on version. Manitou reserves the right to change the specifications shown and described at any time and without prior warning. The manufacturer is not liable for the specifications given. For more information, contact your Manitou dealer. Non-contractual document. Product descriptions may differ from actual products. List of specifications is not comprehensive. The logos and visual identity of the company are the property of Manitou and may not be used without authorisation. All rights reserved. The photos and diagrams contained in this brochure are provided for information only.

MANITOU BF SA - Limited company with board of directors - Share capital: 39,547,824 euros - 857 802 508 RCS Nantes