



# **PROMOVE** DEMOLITION

demolition attachments



attachments

series

MULTI  
PROCESSING  
CRUSHERS



CP  
4

SHARKER



SK  
8

FIX  
PULVERIZERS



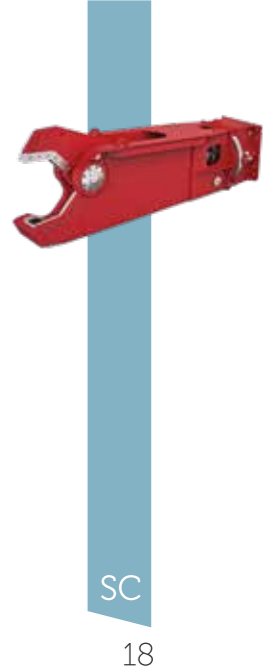
CF  
12

ROTATING  
PULVERIZERS



CR  
14

SCRAP  
SHEARS

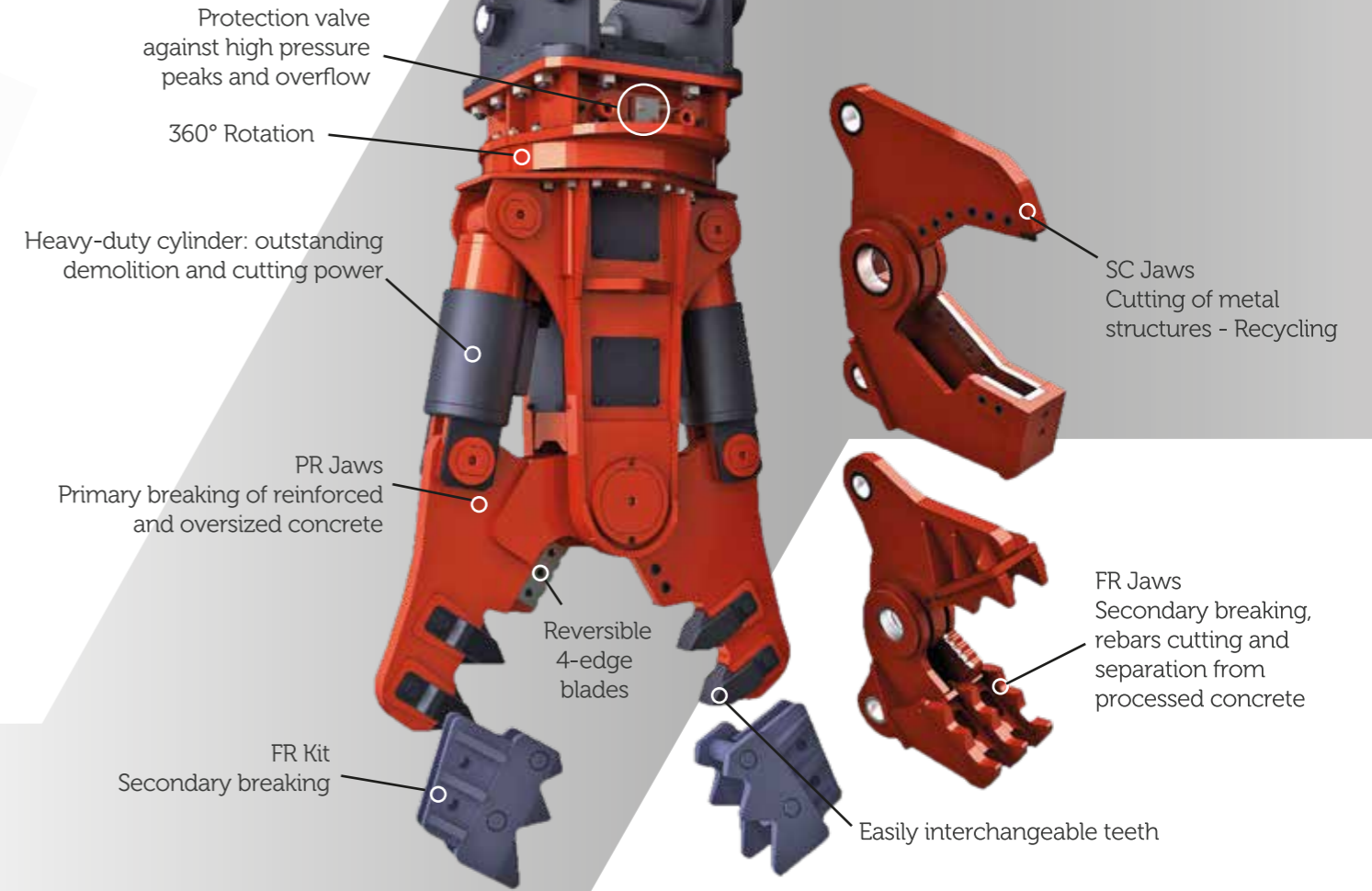


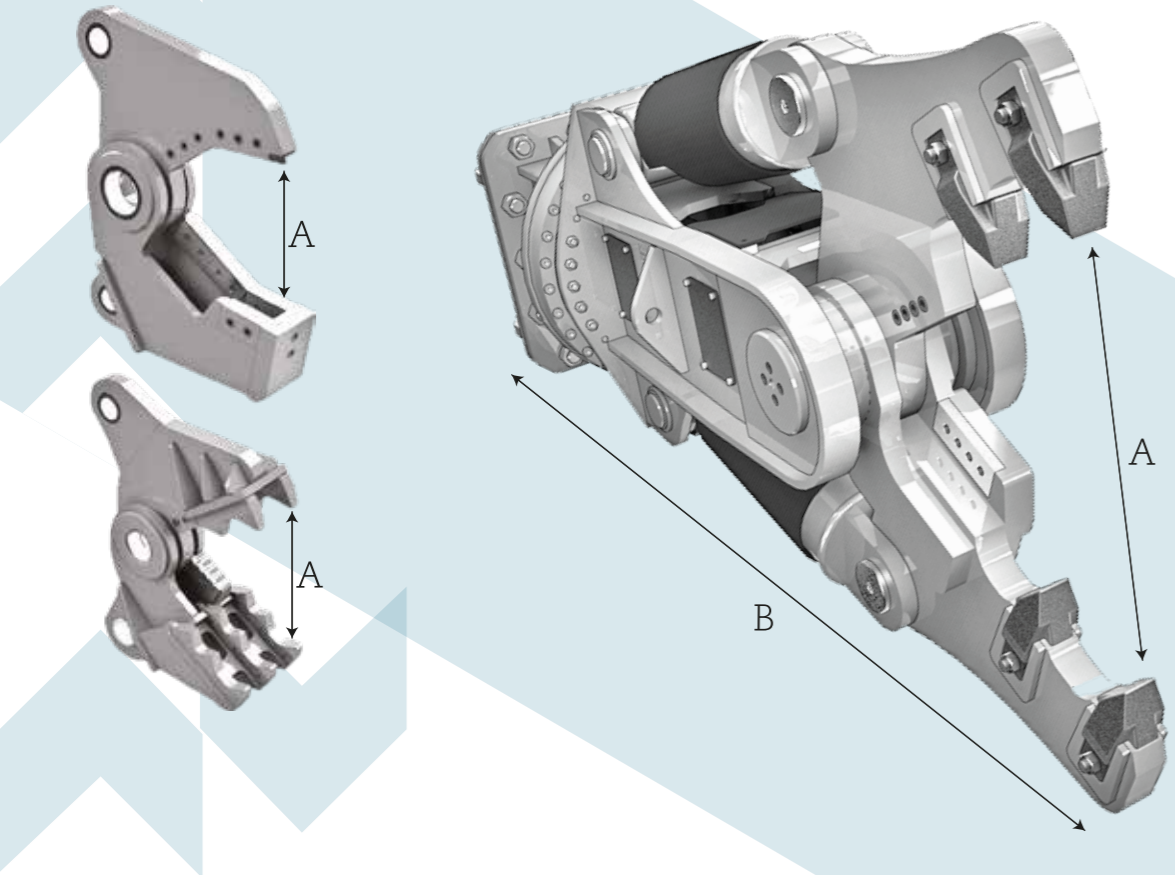
SC  
18



# MULTI-PROCESSING CRUSHERS

CP SERIES





**CP SERIES**



Technical Specifications		CP300	CP600	CP1000	CP1510	CP1800	CP2510	CP4000	
Working weight	kg	380	620	1000	1500	1800	2500	3950	
Excavator weight	t	2/10	6/11	10/18	15/25	15/22	23/38	34/55	
Cylinder force	t	22	34	50	76	98	115	140	
Cylinders working pressure	bar	250	300	300	320	350	350	350	
Cylinders oil flow	l/min	30/50	60/120	60/120	100/180	150/200	170/250	300/350	
Rotation engine pressure	bar	80	100	100	100	120	100	120	
Rotation oil flow (min/max)	l/min	2/3	10/12	10/12	10/12	20/30	10/15	40/50	
Max jaws opening (A)	PR	mm	430	580	620	800	750	880	1230
	SC	mm	220	300	330	400	340	500	580
	FR	mm	420	540	560	700	580	690	990
Total height (B)	mm	1100	1670	1500	1800	1930	2650	2600	
Rotation 360°		hydraulic or mechanical	hydraulic	hydraulic	hydraulic	hydraulic	hydraulic	hydraulic	

Cutting data with SC jaws								
	mm	80	100	120	140	180	240	360
	mm	60	70	100	120	140	180	260
	mm	30	30	35	40	40	50	65

# SHARKER



**SK SHARKER**



360° Hydraulic Rotation

Pressure multiplier, ratio 1:4

Manufactured using the best structural and anti-wear steel

Easily interchangeable teeth

Reversible 4-edge blades

Hydraulic motor equipped with protection valve against high pressure peaks and overflow

Oil filtering system protecting the booster from break and malfunctioning

Heavy-duty cylinder

Optimization of geometries to increase the jaws opening / closing performance speed

Technical specifications		CP300 SK
Working weight	kg	320
Excavator weight	t	2/10
Cylinder force	t	32
Cylinders working pressure	bar	500
Cylinders oil flow	l/min	30/50
Rotation engine pressure	bar	80
Rotation oil flow (min/max)	l/min	2/3
Max jaws opening	mm	386
Rotation 360°		hydraulic



CF SERIES



# FIX PULVERIZERS



Fully protected cylinder

Heavy-duty cylinder: outstanding breaking power

Interchangeable tips

Large jaw opening to attack thick concrete

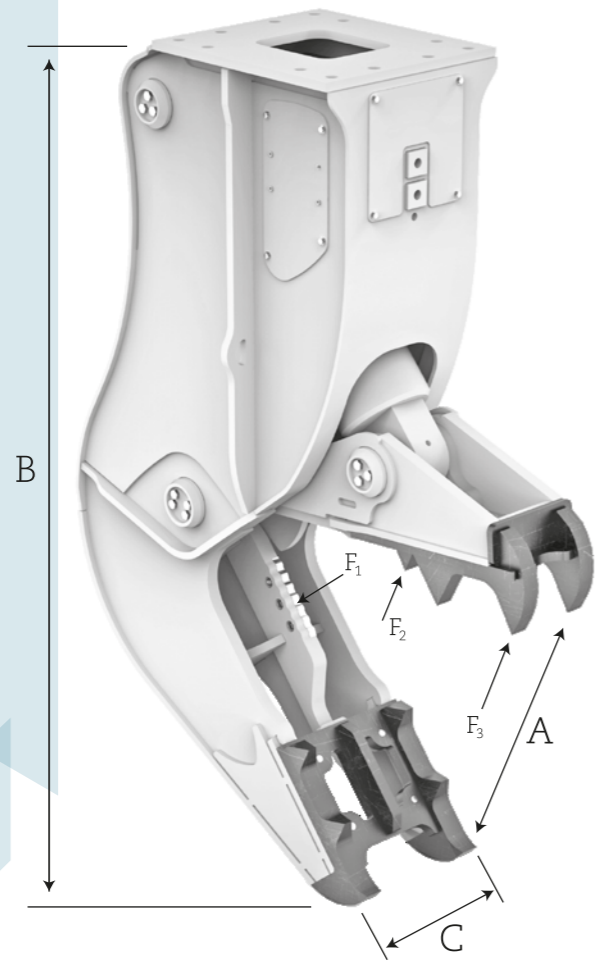
Completely manufactured in Hardox

Speed Valve makes working cycles extremely fast

Reversible blades

Interchangeable tips

Models for excavators from 12 to 50 tons



**CF SERIES**



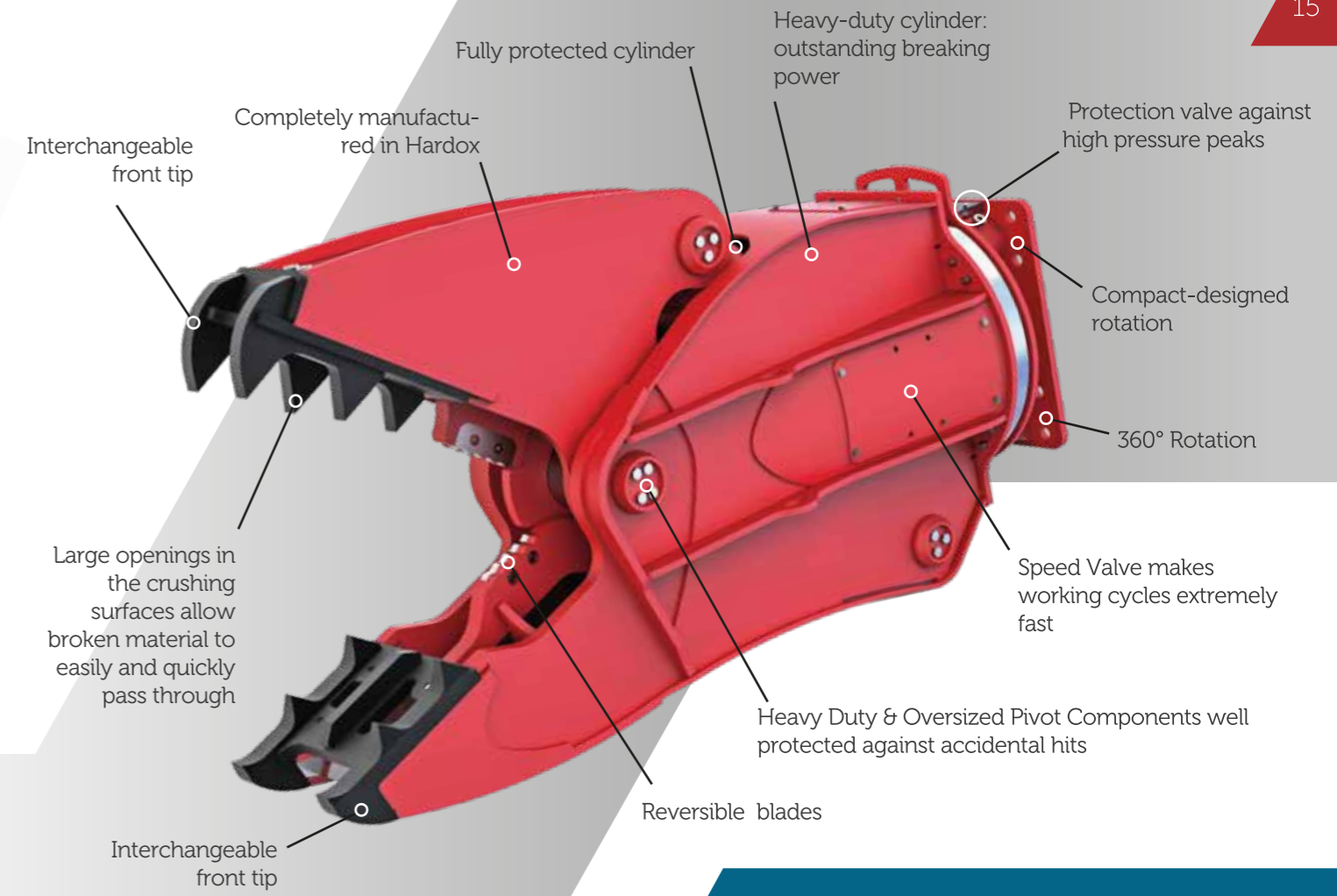
Technical Specifications		CF140	CF200	CF240	CF280	CF350
Crusher weight	kg	1370	1880	2320	2840	3450
Excavator weight	Ton	12/18	17/22	20/28	24/35	30/50
Max jaws opening (A)	mm	710	840	905	1025	1200
Jaws useful length	mm	850	980	1060	1200	1260
Jaws width (lower/upper) ( C )	mm	404/260	454/290	490/314	490/314	530/354
Closing force at tip (F3)	ton	65	80	90	110	120
Closing force (F2)	ton	100	130	150	160	185
Closing force at blades (F1)	ton	175	200	247	295	355
Optimal oil flow (min/max)	l/min	140/200	200/250	200/300	300/400	350/450
Working pressure	bar	350	350	350	350	350
Total height (B)	mm	2235	2590	2710	3005	3110
Max cutting diameter	mm	30	40	40	40	45



CR SERIES



# ROTATING PULVERIZERS



Interchangeable front tip

Completely manufactured in Hardox

Fully protected cylinder

Heavy-duty cylinder: outstanding breaking power

Protection valve against high pressure peaks

Compact-designed rotation

360° Rotation

Speed Valve makes working cycles extremely fast

Heavy Duty & Oversized Pivot Components well protected against accidental hits

Reversible blades

Interchangeable front tip

Large openings in the crushing surfaces allow broken material to easily and quickly pass through

Models for excavators from 6 to 40 tons



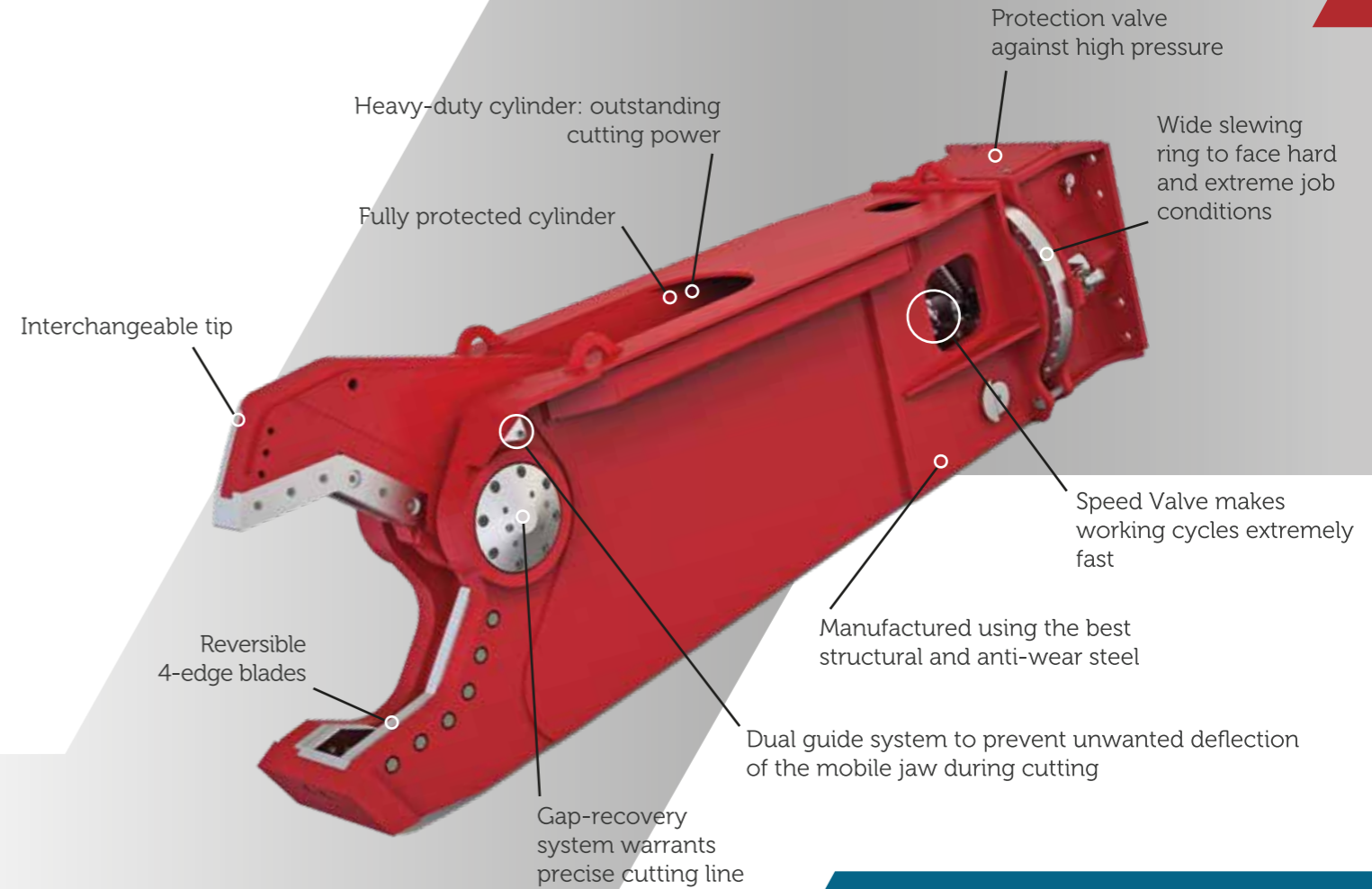




SC SERIES



# SCRAP SHEARS



Heavy-duty cylinder: outstanding cutting power

Fully protected cylinder

Protection valve against high pressure

Wide slewing ring to face hard and extreme job conditions

Interchangeable tip

Speed Valve makes working cycles extremely fast

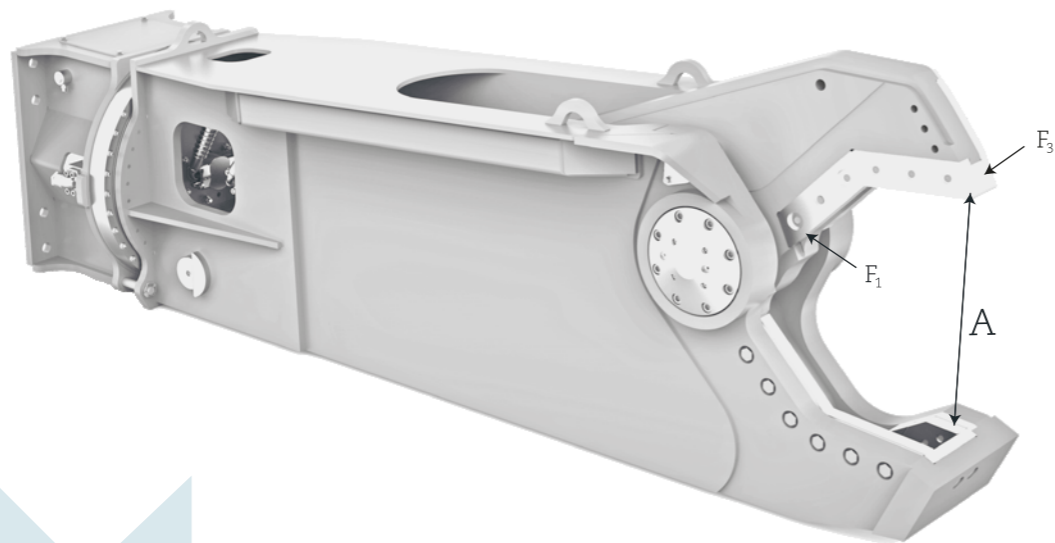
Manufactured using the best structural and anti-wear steel

Dual guide system to prevent unwanted deflection of the mobile jaw during cutting

Reversible 4-edge blades

Gap-recovery system warrants precise cutting line

Models from 1000 kg to 10000 kg



SC SERIES



Technical Specifications		SC1300	SC2200	SC3200	SC4000	SC5000	SC8000	SC10000
Shear weight	kg	1310	2270	3260	4170	5100	8100	10330
Carrier's weight (stick)	ton	13/20	19/28	27/39	32/45	38/55	70/110	over 85
Carrier's weight (boom)	ton	8/14	14/20	20/30	25/40	30/50	50/80	over 60
Max jaws opening (A)	mm	450	480	575	670	740	870	1004
Rotation oil flow (min/max)	l/min	20/30	20/30	20/30	20/30	40/50	40/50	80/100
Rotation pressure	bar	120	120	120	120	120	120	120
Opening/closing oil flow	l/min	150/250	200/300	280/350	300/450	350/500	500/800	700/1000
Opening/closing pressure	bar	350	350	350	350	350	350	350
Rotation 360°		hydraulic	hydraulic	hydraulic	hydraulic	hydraulic	hydraulic	hydraulic
<b>Cutting power</b>								
Throat force (F1)	ton	275	400	620	730	890	1200	1320
Tip force (F3)	ton	61	96	146	165	195	240	280

Cutting data								
	mm	200	300	400	450	500	600	750
	mm	140	200	260	280	320	400	550
	mm	40	55	65	70	75	100	110



Established in 1989, today Promove is leader in manufacturing and distributing hydraulic breakers , shears and other demolition equipment.

All components are in-house made, through advanced CNC machinery and high technology, assuring maximum precision and finishing of all the surfaces.

Promove's company mission is to maximize customers' satisfaction through continuous improvement of the products' performance and reliability.

In order to achieve these goals, particular attention is dedicated to investments in efficient machineries, increasing productivity, pre and after sales services, Research and Development.



# our Workflow



# 5 reasons why

- 1 From an accurate selection of raw materials to product assembly, all mechanical components are made in-house through advanced CNC machinery following strict quality and testing controls.
- 2 Dimensional and functional testing of all components.
- 3 Outstanding reliability resulting in product durability with low maintenance costs.
- 4 Excellent after sales service, spare parts always on stock, 24h delivery.
- 5 Continuous investments in R&D to improve quality and performance mainly focusing on the customers' needs.

Promove manufactures its products following strict policies and in compliance with ISO 9001:2008 standards: from the selection of raw materials and supply channels to the production and final testing.



Promove ensures that every product order is processed through an integrated quality management software, in addition to the in-house technical department support.



The most precious award for the passion and the day to day work of all our workforce is the number of positive feedback we receive from our customers using our demolition equipment in the hardest quarrying, tunnelling, demolition and construction applications worldwide, whether in underwater conditions or at high-reach.

Technical data are non-binding. Promove reserves the right to modify them without notice.



[www.promovedemolition.com](http://www.promovedemolition.com)

PROMOVE  
[www.promovedemolition.com](http://www.promovedemolition.com)

Contact us

**PROMOVE**  
DEMOLITION



Via Luigi Gambardella 10  
70056 Molfetta, Bari - Italy



+39 0803387054



+39 0803387004



[info@promovedemolition.com](mailto:info@promovedemolition.com)

