

# 302.5

Mini Hydraulic  
Excavator



---

**Cat® 3013 Naturally Aspirated Diesel Engine**

**Flywheel Power** 17.1 kW/22.9 hp

---

**Operating Weight**

**With cab** 2734 kg

---

**With canopy** 2619 kg



## Engine

Caterpillar 3013 naturally aspirated, watercooled, 4-stroke, 3-cylinder diesel engine.

Ratings at 2300 rpm	kW	hp
Gross power	18.0	24.1
Net power	17.1	22.9

## Dimensions

Bore	84 mm
Stroke	90 mm
Displacement	1496 cm <sup>3</sup>

## Blade

Blade is full width of the machine.

Width	1450 mm
Height of blade	350 mm
Dig depth	290 mm
Lift height	320 mm

## Swing System

Hydraulic motor-driven.

- Automatic swing brake, spring applied, hydraulic release
- Centralized lubrication
- Machine swing speed 9.0 rpm

## Travel System

Travel speed	
High	4.5 km/h
Low	2.5 km/h

- Each track is driven by one independent 2-speed motor
- Drive modules are integrated into the roller frame for total protection
- Straight line travel when tracking and operating the front linkage simultaneously

## Undercarriage

H-shaped, fabricated frame.

- Tapered roller frame reduces accumulation of material in the tracks
- Track shoe width is 300 mm for both standard rubber and optional steel shoes
- Ground clearance is 310 mm

## Electrical System

12-volt system.

- 55-amp alternator
- 12-volt, 560 CCA, 53 amp/h maintenance free battery
- Sealed electrical connectors

## Hydraulic System

- Auxiliary valve, lines to the swing post and foot pedal are standard
- Optional auxiliary hydraulic lines are available
- Secondary optional auxiliary line uses the bucket cylinder hydraulic circuit
- Boom, stick, bucket and machine swing are pilot-controlled

Pumps: two piston, one gear-type (max. delivery)

Piston	33.3 x 2 lpm
Gear	19 lpm

Operating pressures

Equipment	20 600 kPa
Travel	20 600 kPa
Swing	17 200 kPa

Auxiliary circuit

(max. delivery) 52 lpm at 17 200 kPa

Digging forces (at cutting edge)

Stick (standard)	13.9 kN
Stick (long)	11.9 kN
Bucket	22.0 kN

## Weights

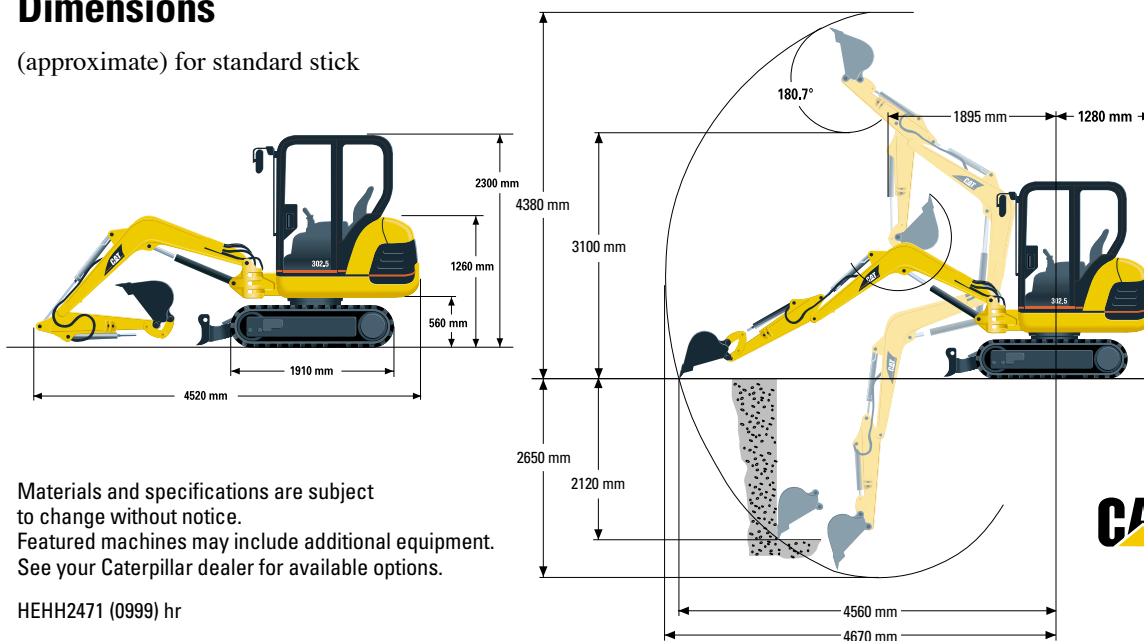
With rubber tracks, bucket, operator, full fuel and auxiliary lines

Cab	*2734 kg
Canopy	*2619 kg

\* Weight varies depending on machine configuration.

## Dimensions

(approximate) for standard stick



Materials and specifications are subject to change without notice. Featured machines may include additional equipment. See your Caterpillar dealer for available options.

HEHH2471 (0999) hr

**CATERPILLAR**<sup>®</sup>

© 1999 Caterpillar