

PULVERISER JAW



Waste
Recycling



Food
Industry



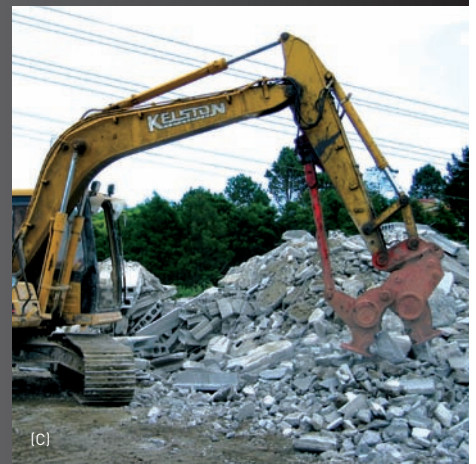
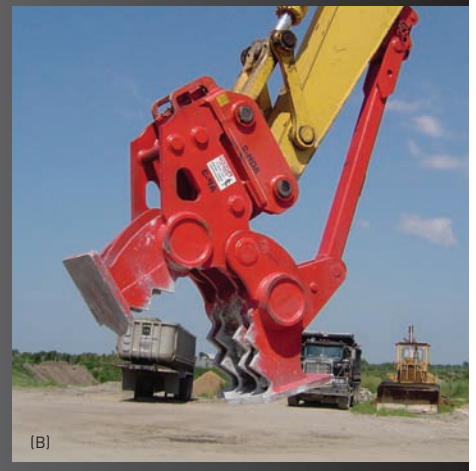
Mineral /
Chemical



Demolition /
Construction



Downsize **large areas of concrete** and separate difficult **rebar** quickly, quietly and efficiently.



PRODUCT ADVANTAGES

VALUE AND SPEED The mechanical Pulveriser Jaw makes fast work of concrete debris, operating at ten to twelve working cycles per minute. Simple, heavy duty design at less than half the cost of comparable hydraulic units.

AMPLIFIED FORCE Power-Positive attachment coupling system, amplified bucket ram force and raised center tooth design focuses crushing power at the point of engagement.

PIVOT BUSHINGS The units are fitted with oversize fibre semi-self lubricating bushes for outstanding rigidity and less maintenance.

CLEAN RESULT Fast jaw speed and greater crushing power produces clean separated reinforcing steel (re-bar) and clean crushed concrete in pieces of six to eight inches and smaller.

TOUGH Thicker manufactured-material sections together with the use of heavy wall tubing across the jaws gives the Pulveriser Jaw greater durability and rigidity.

SIMPLE TEETH MAINTENANCE The Pulveriser Jaw's replaceable, abrasion-resistant teeth are welded in to create a solid work platform. New teeth will work harden while pulverising steel re-enforced concrete and are long-lasting, only requiring

replacement approximately every two years depending on usage. No hard facing is required.

MORE POWER-FASTER CHANGE

The Power-Positive attachment coupling system creates 25% more power and allows fast changeovers to OEM buckets and other A-Ward attachments such as Re-bar Shear, Rail/Wire Shear, Grapple Jaw, Steel Shear, Concrete Shear, and Sieve Rakes.

IMAGES: (A) AP400 in action; (B) AP300 mounted to a Quick Hitch and Strut Arm Hitch; (C) CAT311 (10 ton) with AP120



IMAGES: (D), (E) & (F) Pulveriser Jaw in action; (D Insert) Shows jaw optional extras of lower wear pads and bolt on teeth

APPLICATIONS

DEMOLITION Excels in the secondary processing of concrete debris for fill and crusher feedstock. Also used in primary demolition of bridge decking, parking structures, floor slab, beams and footings.

CONCRETE RECYCLING Use in place of hydraulic breaker for faster and quieter preparation of concrete for crusher feedstock. Separates concrete from rebar cleanly for maximum resource recovery.

CAST IRON RECYCLING Excels at safely breaking cast iron material such as machinery stands and engine blocks.

THE A-WARD SOLUTION

At A-Ward Attachments we pride ourselves on providing economical and comprehensive attachment solutions for today's demolition contractors and recyclers. Our patented Power-Positive attachment coupling system allows the operator to change to OEM Buckets and other A-Ward attachments in less than one minute.



Rebar Shear: Innovative shear turns tangled rebar into valuable scrap. Sequenced jaws set one foot apart makes three cuts per stroke. Maximize profit for demolition jobs and concrete recycling operations.



Concrete Shear: Use in place of a hydraulic hammer for cost-effective primary demolition and downsizing of oversize concrete debris.

SPECIFICATIONS

PULVERISER JAW SPECIFICATIONS												
MODEL #	Excavator Weight approx		Attachment Weight approx		Pulveriser Jaw Opening		Upper Jaw Width		Lower Jaw Width		Jaw Length from Pivot	
	[000 lbs]	[000 kg]	[lbs]	[kg]	[inch]	[mm]	[inch]	[mm]	[inch]	[mm]	[inch]	[mm]
AP120	26	12	2640	1200	23.6	600	22.5	570	17.3	440	25.2	640
AP200	44	20	3300	1500	29.5	750	27.1	690	21.6	550	29.5	750
AP300	66	30	3960	1800	32	813	30.9	785	25	635	33.8	860
AP400	88	40	5280	2400	37	940	34.6	880	28.3	720	37.8	960
AP650	143	65	7480	3400	45.3	1150	39.4	1000	31.5	800	45.3	1150



HEAD OFFICE (NEW ZEALAND) A-Ward Attachments Ltd 17 Miami Parade, Penrose, Auckland 1061, New Zealand
 → Chris Wilson e chris@a-ward.com p 0800 215 911 f +64 9 634 5128

THE WORLD'S FASTEST... www.a-ward.com