

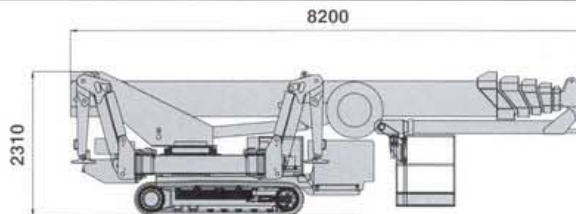
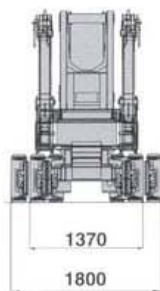
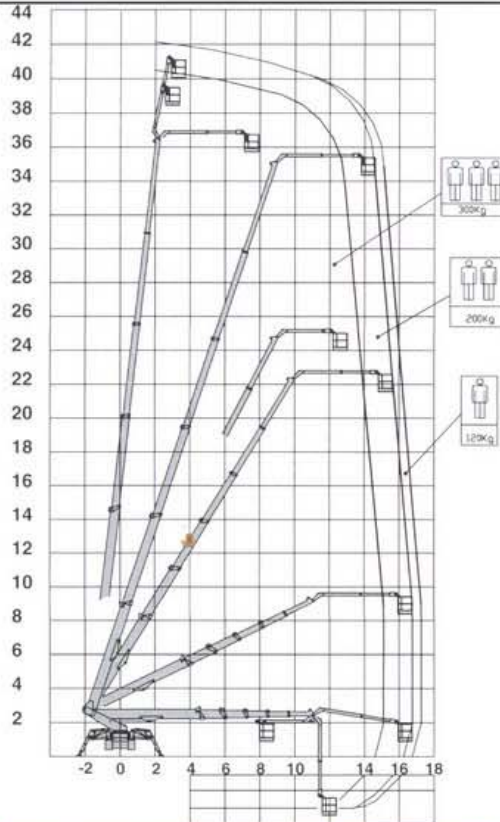
www.palazzani.it

The new
RAGNO
generation

RAGNO XTJ 42x2x3

- > 42m max. work. h.
- > 200-300 kg s.w.l.
- > retractable tracks to 137 cm
- > 400 Kg wire-winch

RAGNO XTJ 42



| | | | | |
|---------------------------------------------------------------------------------------------------------------------------|----------------------------------------------------------------------------------------------------|------------------------------------------------------------------------------------------------------------------------------|-----------------------------------------------------------------------------------------------------------------|--------------------------------------------------------------------------------------------|
| ALTEZZA MASSIMA | MAX. W. HEIGHT | MAX. ARBEITSHÖHE | HAUT MAXI DE TRAVAIL | 42 M - 200 KG 40 M - 300 KG |
| MOTORE DIESEL MOTORI ELETTRICI | DIESEL ENGINE ELECTRIC MOTORS | DIESELMOTOR ELEKTROMOTORS | MOTEUR DIESEL MOTEURS ELECTRIQUES | 35 kW 220V-2,2kW 380V-5,5kW |
| PENDENZA MAX VELOCITA' MAX ROTAZIONE BRACCIO NAVICELLA AEREA ROTAZIONE NAVICELLA PESO LARGHEZZA CINGOLI | MAX SLOPE MAX SPEED TURRET SLEWING AERIAL CAGE CAGE ROTATION WEIGHT TRACKS WIDTH | MAX. STEIGFAHIGKEIT MAX. GESCHWINDIGKEIT DREHTURM ROTATION ARBEITSKORB KORB ROTATION GEWICHT RAUPENSBREITE | PENTE MAXI VITESSE MAXI ROTATION TOURELLE NACELLE ORIENTATION NACELLE POIDS LARGEUR CHENILLES | 40% 1,4 KM/H 360° CONTINUOUS 240 X 90 CM 90°+ 80° 10.200 KG 137 ÷ 180 CM |

Caratteristiche e dati tecnici sono puramente informativi e soggetti a variazione senza preavviso.

Characteristics and technical data are informative only and subjected to change without notice.



Palazzani Industrie Spa

I 25050 Paderno F.C. (Brescia) - Italy

Tel ++ 39 030 6857073

Fax ++ 39 030 657079

mailto: platforms@palazzani.it

www.palazzani.it