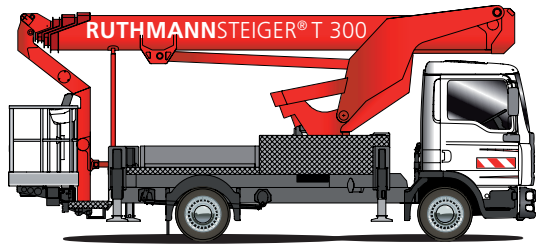


**RUTHMANN**  
professionals at work

## STEIGER® T 300

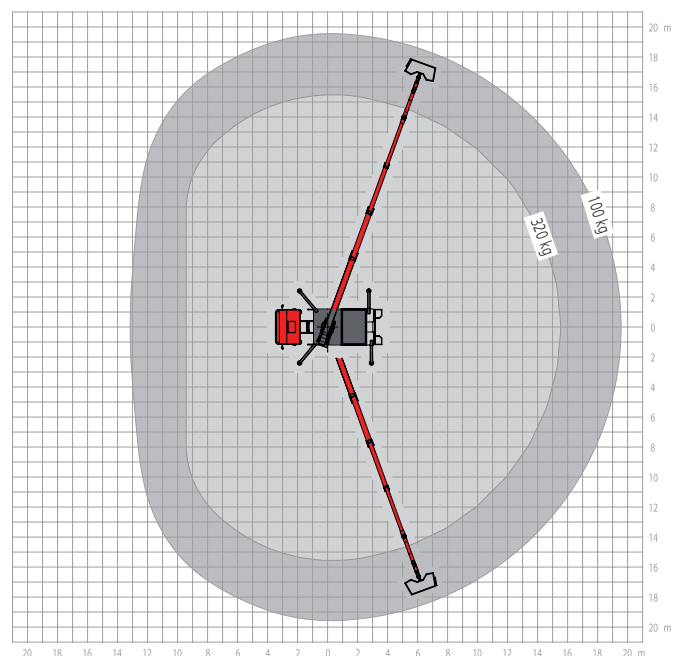
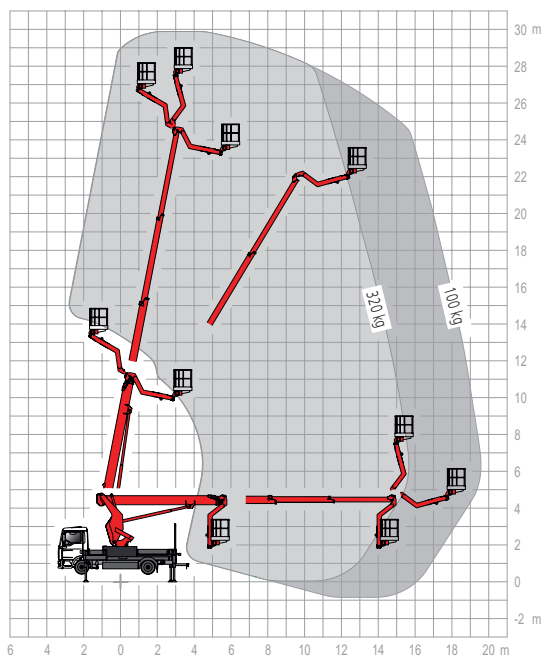


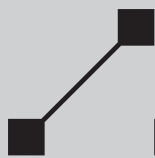
### RUTHMANNSTEIGER® T 300 Top of the class on a 7,49 t-Chassis

- 30 m working height
- 19.7 m outreach at 100 kg working cage
- maximum performance data on a 7.49 t chassis
- 195° swivelling angle of the RÜSSEL® (jib)
- large aluminum cage 1,85 m x 1,00 m
- 320 kg working cage load capacity
- total vehicle length: ≥ 7,95 m
- variable turret (shorten the overall length, generating working height and prevention of swinging out)
- 2 X 90° cage-rotation device
- time-tested horizontal/vertical jacking mechanism for variable jacking widths
- information and diagnostic display in the working cage
- memory function stores positioning data at the job site and many other innovative functions



For further information visit: [www.ruthmann.de/t300en](http://www.ruthmann.de/t300en)





## STEIGER® T 300

In order to get your jobs done quickly and easily, it is vital for you as an access platform rental company, horticulturist and landscaper, building cleaner or painter that your access platform has an optimum working height and is flexible, safe and efficient at the same time.

The **RUTHMANNSTEIGER® T 300** meets precisely these requirements. It offers maximum performance data on a 7.49 t carrier chassis and can therefore be driven with a category C 1/3 driving licence.

The T 300 is equipped with the innovative "variable turret". Thanks to the elevated turret top, you can perform jobs, such as bridging projections or foreparts, even on hard-to-reach buildings quickly and expeditiously.

Another advantage of the T 300 is its movability. The working cage swivelling angle of 2 x 90° and the RÜSSEL®'s range of rotation of 195° guarantee a high degree of agility even in difficult working conditions. With an area of 1.85 m x 1.00 m and a carrying capacity of 320 kg, the working cage also offers sufficient loading capacity for 3 persons and tools. Because the working cage

is attached to the rear of the vehicle, it can be entered and loaded comfortably. At the modern control panel in the cage you can quickly navigate to the desired place with 4-fold movements.

The **RUTHMANNSTEIGER® T 300** offers maximum performance data on a 7.49 t chassis: 30.00 m working height and 19.70 m outreach.

Of course you can depend on the proven and reliable **RUTHMANN** technology in this **STEIGER®** model too. For example the T 300 is serially equipped with an automatic positioning system and automatic return to basic position. You can put the unit in the required working position in next to no time. After the job you can return the T 300 to the desired transport position just as swiftly.

Variable horizontal-vertical jacking is also a standard feature. It guarantees safe and flexible jacking, e.g. through jacking in the vehicle profile, on one or on both sides, even at sites with a small positioning area.

Further striking features of the **RUTHMANNSTEIGER® T 300** include a short total length of only  $\geq 7.95$  m, a small wheel-

base of  $\geq 3.60$  m and permissible inclination up to 5° with automatic reach adjustment. The last-named function ensures that the access platform can be positioned and put into operation even at extremely sloping sites without spending a lot of time and effort on the correct alignment of the unit.

Rounded off by the standard information and diagnosis system on the control panel and

chassis which always keeps you informed about the **STEIGER®**'s functions, this aerial platform meets every requirement.

Please contact us – by phone, fax or e-mail.

We would be pleased to give you more information on our proven **STEIGER®** and show you the benefits and advantages of our product!



RUTHMANNSTEIGER®		T 300				
	Working height	30,00 m		Total length of vehicle $\geq$	7,95 m	
	Lifting height	28,00 m		Perm. siting inclination	5°***	
	Outreach	19,70 m*		Perm. total weight $\geq$	7.490 kg	
	Size of working cage	1,85 x 1,00 m		Range of rotation	500°	
	Carrying capacity of working cage	320 kg		Swivelling angle of the jib / RÜSSEL®	195°	
	Overall height $\geq$	3,35 m		Driving Licence	C 1 / 3	
* depending on load, angle of rotation and outfit					Wheelbase carrier chassis $\geq$	3,30 m
** with restriction of performance data						