



ProfiHäcksler 300K1 E7,5-H



ProfiHäcksler 300K1 B9,7-H

ProfiHäcksler 300K1

The professional equipment for shredding of waste and preparation of compost

Article no.	Type	Drive	Weight kg	
M3251S	E7, 5-H	7.5 kW electr. motor 400V, S6, CEE 16A	~ 192	
M3200S	Z-D	Tractor, power consumption 7 kW	~ 198	
M3261S	B9,7-H	9,7 kW (13 PS) 4-stroke Briggs & Stratton Vanguard petrol engine, hand-starter	~ 172	

For optimum waste shredding and compost preparation. Chops organic material, such as shrubs, bushes, wreaths, garden and sawmill waste. Improved defibration for extremely

fast rotting. The intake belt transports the material automatically and continuously to the hammer drum where it is chopped.

Technical data:

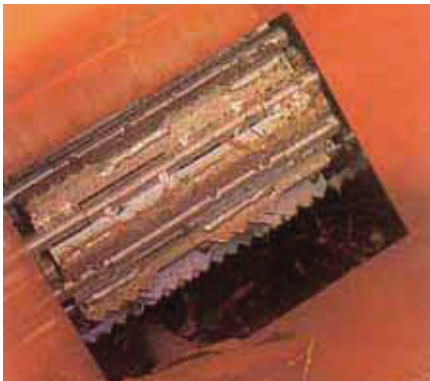
- Wood up to approx. 5 cm Ø
- 27 rotating mallets
- Spring-loaded intake belt
- Overload clutch
- Mallets with cutting edge that can be used on both sides as a standard
- E- and B-drive: mobile on two solid rubber wheels Ø 300 mm
- Driven by tractor: universal-joint shaft required, three-point linkage cat. I

Accessory equipment for ProfiHäcksler 300K1

Article no.	Description
F0002179	Hour counter for machines with e-drive
F0001806	Hour counter for machines with Z-drive (Reed contact) with speed indicator
F0001482	Hour counter for machines with petrol engine
F0002660	Set of mallets with cutting edge (27 pc.)
Z1201760	Mallet with cutting edge (1 pc.)
Z2000638	Walterscheid universal-joint shaft with overload clutch



Shredded material



Spring-loaded intake belt



This is how ProfiHäcksler 300K1 works