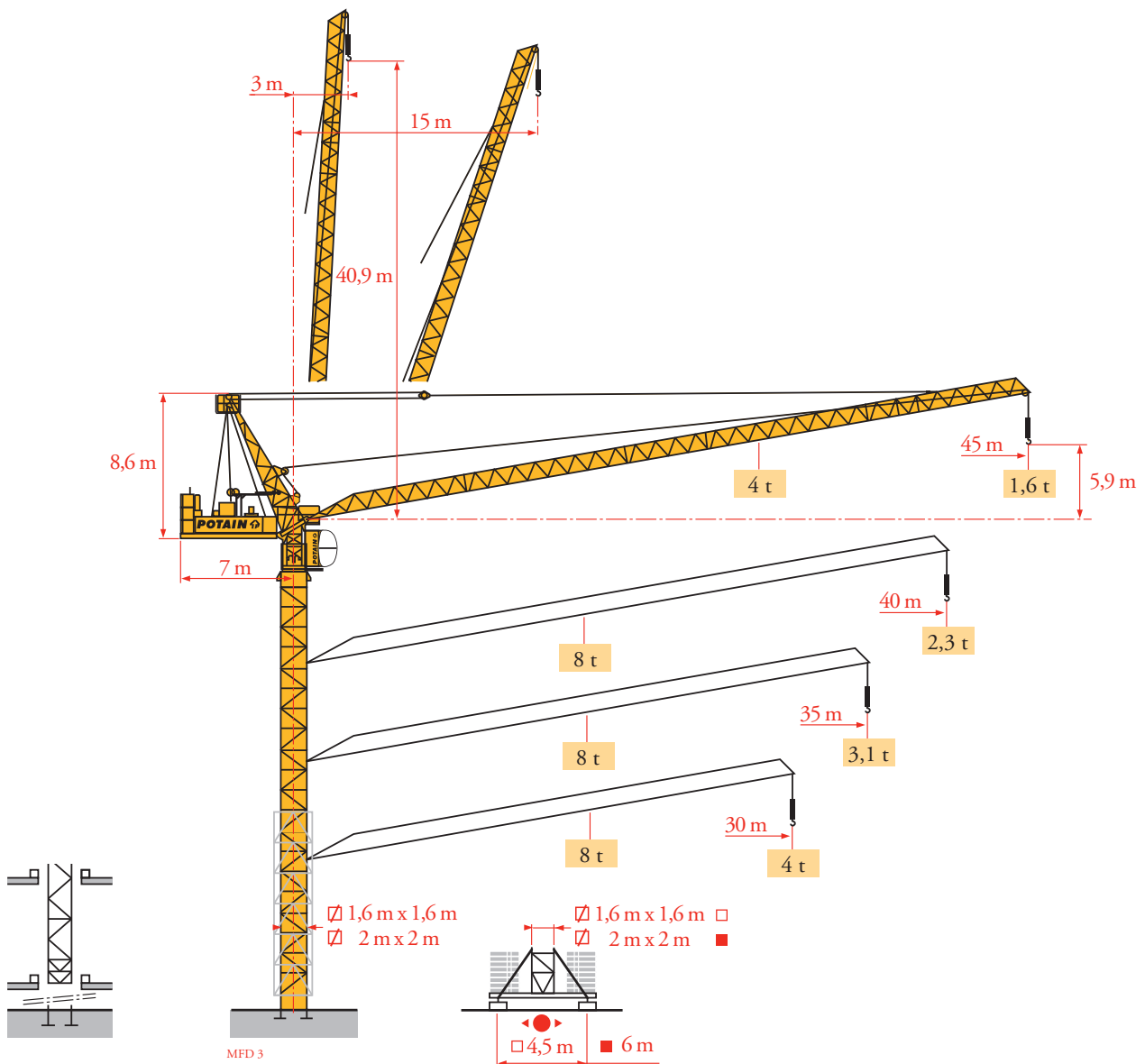


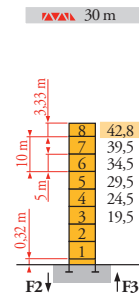
# Potain MR 90C



Mat / Réactions  
Maste / Eckdrücke  
Masts / Reactions  
Mástil / Reacciones  
Torre / Reazioni  
Tramo / Реаcções  
Композиции  
башни / Реакции

MFD 2

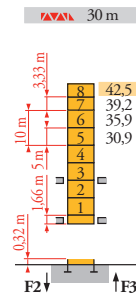
Télescopable 1,6 m  
Teleskopierbar 1,6 m  
Telescopico 1,6 m  
Telescopico 1,6 m  
Telescopagem 1,6 m  
Телескопируемый,  
башня 1,6м x 1,6м



Section	H (m)	5 m	3,33 m
35 m	39,5	7	-
40 m	36,2	5	2
45 m	34,5	6	-

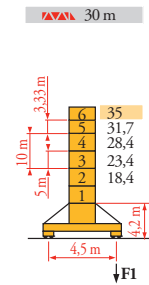
P 41 A	
F2	112 t
F3	87 t
Weight	39 t



Section	H (m)	5 m	3,33 m
35 m	39,2	6	1
40 m	0	-	-
45 m	0	-	-

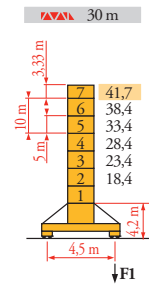
B 43 A	
i	



Section	H (m)	5 m	3,33 m
35 m	31,7	4	1
40 m	28,4	4	-
45 m	25	2	2

S 40 A	
F1	66 t
Weight	42 t

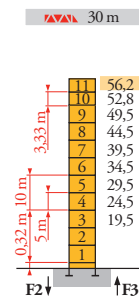


Section	H (m)	5 m	3,33 m
35 m	38,4	6	-
40 m	35	4	2
45 m	33,4	5	-

S 41 A	
F1	81 t
Weight	45 t

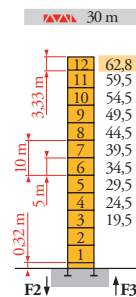
Télescopable 2 m  
Teleskopierbar 2 m  
Telescopico 2 m  
Telescopico 2 m  
Telescopagem 2 m  
Телескопируемый,  
башня 1,6м x 1,6м



Section	H (m)	5 m	3,33 m
35 m	54,5	10	-
40 m	52,8	9	1
45 m	51,2	8	2

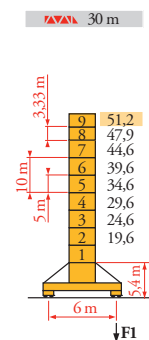
P 61 A	
F2	120 t
F3	87 t
Weight	54 t



Section	H (m)	5 m	3,33 m
35 m	59,5	11	-
40 m	57,8	10	1
45 m	56,2	9	2

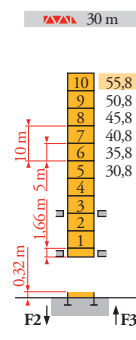
P 62 A	
F2	132 t
F3	97 t
Weight	58 t



Section	H (m)	5 m	3,33 m
35 m	47,9	7	1
40 m	44,6	7	-
45 m	42,9	6	1

V 60 A	
F1	84 t
Weight	61 t



Section	H (m)	5 m	3,33 m
35 m	54,2	9	1
40 m	53,9	8	2
45 m	50,8	9	-

B 60 A	
i	

**FR**

- Réactions en service
- Réactions hors service



A vide sans lest (ni train de transport) avec flèche et hauteur maximum.

**DE**

- Reaktionskräfte in Betrieb
- Reaktionskräfte außer Betrieb

Ohne Last, Ballast (und Transportachse), mit Maximalausleger und Maximalhöhe.

**EN**

- Reactions in service
- Reactions out of service

Without load, ballast (or transport axes), with maximum jib and maximum height.

**ES**

- Reacciones en servicio
- Reacciones fuera de servicio

Sin carga, sin lastre, (ni tren de transporte), flecha y altura máxima.

**IT**

- Reazioni in servizio
- Reazioni fuori servizio

A vuoto, senza zavorra (ne assali di trasporto) con braccio massimo e altezza massima.

**PT**

- Reações em serviço
- Reações fora de serviço

Sem carga (nem trem de transporte)-sem lastro com lança e altura máximas.

**RU**

- Реакции при работе
- Реакции в покое

Вес без груза, балласта (или транспортных осей), с максимальной длиной стрелы и максимальной высотой.



Mécanismes  
Antriebe  
Mechanisms  
Mecanismos  
Meccanismi  
Mecanismos  
Механизмы

MFD 3

MR 90 C - 50 Hz														ch - PS hp	kW	
	33 LVF 20 Optima	m/min	2,2 → 8,6 → 26 → 34 → 50 → 64								1,1 → 4,3 → 13 → 17 → 25 → 32	30	22	469 m		
	50 LVF 20 Optima	τ	4 4 4 3 2 1								8 8 8 6 4 2	50	37	697 m		
	50 VVF 20	m/min	1 min 25 s											50	37	
	RVF 152 Optima +	tr/min U/min - rpm	0 → 0,8											2 x 5,5	2 x 4	
	RT 443 A1 - 2V	m/min	15 - 30											4 x 5	4 x 3,7	
	RT 544 A1 - 2V	m/min	13,5 - 27											4 x 7	4 x 5,2	

IEC 60204-32		kVA	
400 V(+10% -10%) 50 Hz / 480 V(+ 6% -10%) 60 Hz		33 LVF : 95 kVA 50 LVF : 112 kVA	

MR 90 C - 60 Hz														ch - PS hp	kW	
	33 LVF 20 Optima	m/min	2,2 → 8,6 → 26 → 34 → 50 → 64								1,1 → 4,3 → 13 → 17 → 25 → 32	30	22	469 m		
	50 LVF 20 Optima	τ	4 4 4 3 2 1								8 8 8 6 4 2	50	37	697 m		
	50 VVF 20	m/min	1 min 25 s											50	37	
	RVF 152 Optima +	tr/min U/min - rpm	0 → 0,8											2 x 5,5	2 x 4	
	RT 443 A1 - 2V	m/min	18 - 36											4 x 6	4 x 4,4	
	RT 544 A1 - 2V	m/min	16 - 32											4 x 8,4	4 x 6,2	

IEC 60204-32		kVA	
400 V(+10% -10%) 50 Hz / 480 V(+ 6% -10%) 60 Hz		33 LVF : 95 kVA 50 LVF : 112 kVA	

	<b>FR</b>		<b>DE</b>		<b>EN</b>		<b>ES</b>		<b>IT</b>		<b>PT</b>		<b>RU</b>
	Levage		Heben		Hoisting		Elevación		Sollevamento		Elevação		Подъем
	Relevage		Ausleger-Einziehen		Luffing		Elevación de flecha		Brandeggio		Inclinação da lança		Подъем стрелы
	Orientation		Schwenken		Slewing		Orientación		Rotazione		Rotação		Поворот
	Translation		Kranfahren		Travelling		Traslación		Traslazione		Translação		Перемещение крана
	Nous consulter		Auf Anfrage		Consult us		Consultarnos		Consultateci		Consultar-nos		Проконсультируйтесь у нас



Document commercial non contractuel. Pour toute information technique se référer à la notice correspondante.

Unverbindliches Vertriebsdokument. Für technische Informationen, siehe die entsprechenden Anweisungen.

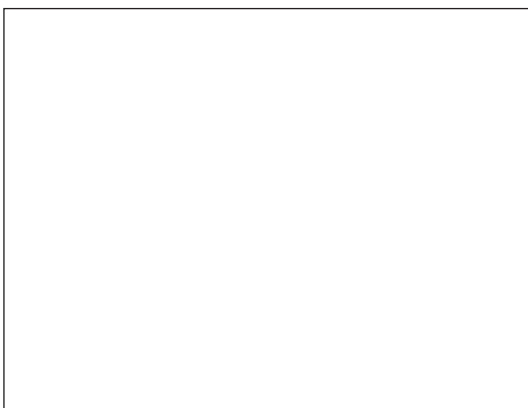
This commercial document is not legally binding. For any technical information, please refer to the corresponding instructions.

Documento comercial no contractual. Para cualquier información técnica, ver la noticia correspondiente.

Documento commerciale non vincolante, per tutte le informazioni tecniche fare riferimento al catalogo istruzioni.

Documento comercial não contratual. Para qualquer informação técnica complementar consultar as respectivas instruções.

Этот коммерческий документ не является юридически обязательным. Для получения технической информации, см. соответствующие инструкции.



MR 90C



**Manitowoc - Americas - World Headquarters**  
2400 S. 44th Street • Manitowoc • WI 54220 USA  
Tel: +1 920 684 4410 • Fax: +1 920 652 9778

**Manitowoc - Europe, Middle East & Africa**  
Ecully, France  
18, rue de Charbonnières B.P. 173 • 69132 ECULLY Cedex • FRANCE  
Tel: +33 (0)4 72 18 20 20 • Fax: +33 (0)4 72 18 20 00

**Manitowoc - Asia Pacific**  
16F Xu Hui Yuan Building,  
1089 Zhongshan No.2 Road (S) • Shanghai 200030 China  
Tel: +86 21 6457 0066 • Fax: +86 21 6457 4955

REF. 2008 04 MFD 4