

D A E W O O • W H E E L • L O A D E R

MEGA **300-v**

DAEWOO NEW WHEEL LOADER

- Operating Weight : 17,300 kg (38,150 lb)
- Bucket Capacity : 3.0 m³ (3.92 cu · yd)
- Rated Engine Power : 169 kw (230HP)/2,100 rpm



DAEWOO
DAEWOO HEAVY INDUSTRIES &
MACHINERY LTD.

Specifications



Engine "Emissions Certified"

Make and model DAEWOO DE12TIA diesel engine
 Type 4-Cycle, Turbo charger & charge air intercooler, direct injection
 Net flywheel horse power (SAE J 1349, Htpdd) 230HP(169kw)/ 2,100rpm
 Total displacement 11 liter(671.3in³)
 No. of cylinders 6
 Bore x stroke 140mm(5.51 ") × 152mm(5.98 ")
 Cooling type Sucker plastic fan(30") driven by hydraulic fan motor
 Air cleaner Dry type(double stage)



Electrical system

Voltage 24v
 Batteries, in series 2 × 12v
 - total capacity 150 Ah
 - type maintenance-free
 Starter motor 24v × 6.0 Kw
 Alternator capacity 50A



Torque converter

Type 3-element, 1 stage, single phase
 Torque stall ratio 2.813



Transmission

Type: Full Auto Power-shift countershaft design with four forward and three reverse speeds.
 Control: single lever electric "fingertip" type.

Forward speeds	kph (mph)
1	7.6 (4.7)
2	13.5 (8.4)
3	24.0 (14.9)
4	36.5 (22.7)
Reverse speeds	kph (mph)
1	8.1 (5.0)
2	13.9 (8.6)
3	24.3 (15.1)

Safety device prevents engine starting while in neutral gear



Axles

Rigid front axle, oscillating rear axle designed for heavy duty applications
 Rear axle oscillation ± 15°
 Hermetically sealed final drives and wet disc brakes



Brakes

type wet multi disc brakes
 fully hydraulic operated brake circuit
 Independent circuit for each axle
 dual pedal braking system
 Transmission declutch during braking can be preselected by a switch on the control stand panel
 Parking brake: dry disc type
 Spring applied, electric-hydraulic released via a switch on the control stand panel
 The brake circuit complies with the following international standards ISO3450, EEC 71/320, SAE J1473



Tires

Type Tubeless
 Choice of 23.5 × 25 × 16PR(L3)
 23.5 R25 X HAT2(L3)
 23.5 R25 X LDD2AT(L5)
 23.5 R25VMT(L3)



Hydraulic system

Type sealed system with anticavitation and relief valves
 Pump vane type with steel case and automatic wear compensation
 - max. flow delivery 310l/min (82gal/min)
 - max. working pressure 200kg/cm² (2845psi)
 Control Pilot, single lever
 Double-acting hydraulic cylinders
 Loader arm
 bore x stroke 150mm(5.9 ") × 831mm(32.71 ")
 Bucket
 bore x stroke 190mm(7.48 ") × 495mm(19.48 ")
 Operating time
 lift 5.4 s
 lower 4.0 s
 dump 1.5 s
 Hydraulic lines and connecting flanges are equipped with O-ring seals.
 Invaluable for loading and transport on uneven terrain.



Steering

Type Load sensing orbitrol type steering control, full hydraulic, power steering.
 Pump vane type, the hydraulic system pump
 Max. flow rate 14l/min (37 gal/min)
 Max. working pressure 185kg/cm² (2631 psi)
 Cylinders
 bore x stroke 80 mm(3.14 ") × 450mm(1.7 ")
 Emergency steering circuit with hydraulic pump driven by electric DC-motor.



Cab

Modular cab. Excellent all-round visibility.

The ROPS/FOPS complies with the following standards:

ROPS - ISO3471-SAE 1040

FOPS - ISO 3449/SAE J 231



Capacities

ENGINE

Lube oil	25 litres (6.6 gal)
Coolant	50 litres (13 gal)
Fuel tank	350 litres (92.4 gal)
Transmission oil	38 litres (10 gal)
Hydraulic system	210 litres (55.5 gal)

AXLES

Front	57 litres (15 gal)
Rear	40 litres (10.6 gal)

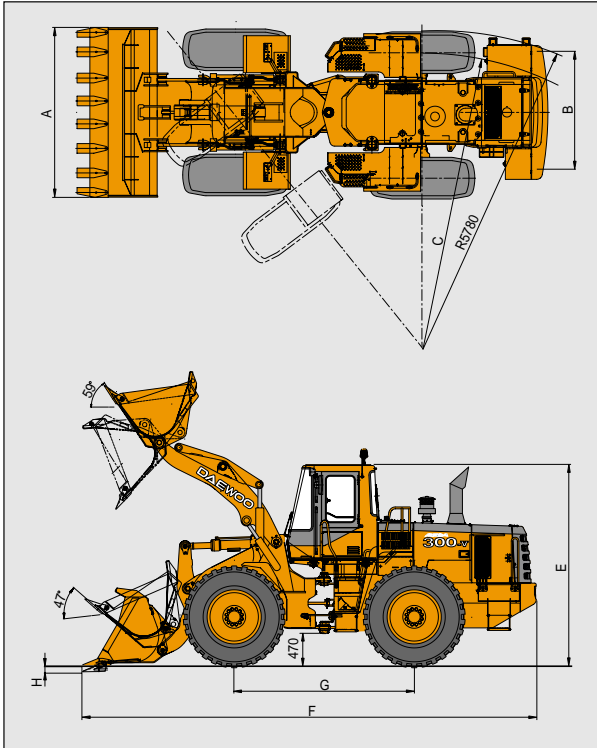
Standard equipment

- Car stereo(AM / FM)
- 2 Road lights with high / low beams
- 2 Front directional indicators
- 2 Combination : tail light, stop light and directional indicators
- 2 Front and rear working lights
- Hourmeter, speedometer and tachometer
- Electronic display / monitoring system
- Engine coolant temp. gauge
- Torque converter oil temp. gauge
- Fuel level indicator
- Horn
- Fuel level indicator
- Neutral safety start system
- Fully adjustable suspension seat and seat belt
- ROPS Cab with window washer and wipers and rear view mirrors
- Sunvisor, sliding door windows
- Arm Rest & Wrist Rest
- Front and rear fenders
- Rear frame side covers
- Heater and defroster
- Air conditioner
- Pull hitch
- Automatic electro-magnetic return to dig
- Boom kick - out

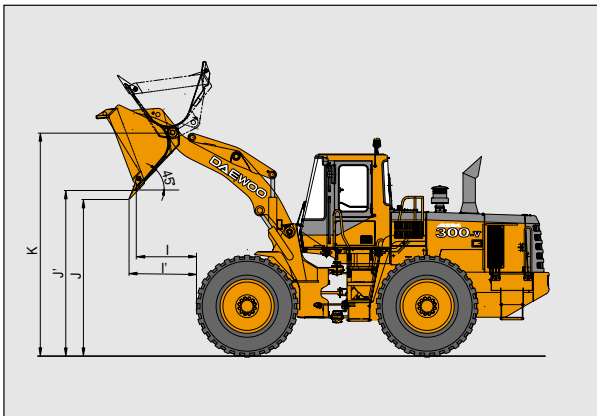
Optional equipment

- Auxiliary hydraulic function
- Emergency steering
- Fuel feeding pump
- Fork equipment
- Noise reduction kit
- Limited slip differential axle
- Rear full fender
- Timber grapple
- Boom float kick-out
- Rotating beacon
- Under guard
- LIS (Boom suspension) system
- CCTV camera
- 3-spool piping
- Wheel chocks
- Two lever
- Ergo lever

Dimension



Working ranges



* All performance data and specifications based on a unit with 23.5-25 tires.

Specifications

Bucket type	Unit	General Purpose	
Bucket Capacity	m ³ (yd ³)	2.9 (3.8)	
Bucket Width	(A) mm (ft.-in)	2,920 (9' 7")	
Tread	(B) mm (ft.-in)	2,150 (7' 0")	
Turning Radius at Tire Center	(C) mm (ft.-in)	5,470 (17' 11")	
Overall Height	(E) mm (ft.-in)	3,470 (11' 5")	
Overall Length	(F) mm (ft.-in)	8,085 (26' 6")	
Wheel Base	(G) mm (ft.-in)	3,200 (10' 6")	
Digging Depth at 0°Level	(H) mm (ft.-in)	76 (3.1")	
Dump Reach at 45deg (I) (J)	mm (ft.-in)	1,152 (3' 9") / 1,287 (4' 2")	
Dump Height at 45deg (J) (J')	mm (ft.-in)	2,780 (9' 1") / 2,962 (9' 8")	
Max. Boom Height	(K) mm (ft.-in)	4,000 (13' 1")	
Ground Clearance	mm (ft.-in)	470 (1' 6")	
Max. Tilt Angle on Ground	deg	42	
Max. Tilt Angle at Carry	deg	47	
Max. Tilt Angle at Fully Raised	deg	59	
Max. Dump Angle at Fully Raised	deg	47	
Breakout Force	kgf (lbf)	18,500 (40,790)	
Static Tipping Load at 0°	kgf (lbf)	13,500 (28,890)	
	40°	kgf (lbf)	11,100 (24,480)
Max. Operating Weight	kgf (lbf)	17,300 (38,150)	

* Specifications are subject to change without prior notice.



Seoul Office :
20st Fl. Daewoo Center 541 Namdaemunno 5-ga,
Chung-gu, Seoul, Korea.
Mail : C. P. O Box 7955 Seoul, Korea.
Tel : (02)726-3114 Fax : (02)726-3149
Website : www.dhiltl.co.kr

Daewoo Heavy Industries America Corporation.
2905 Shawnee Industrial Way, Suite 100,
Suwanee, GA 30024, U.S.A
Tel : 770-831-2200 Fax : 770-831-0480

Euro Daewoo UK :
Daewoo House Unit 6.3 Nantgarw Park Cardiff
CF4 7QU, U.K
Tel : (01443)842273 Fax : (01443)841933

Euro Daewoo S. A. :
1A Rue Achille Degrace, 7080 Frameries, Belgium
Tel : (065)61.32.30 Fax : (065)67.73.38

Daewoo Maschinen Vertriebs GmbH :
Hans-Böckler strasse 29,
40764 Langenfeld-Fuhrkamp, Germany
Tel : (02173)8509-20 Fax : (02173)980729

EC0025 (2000.12)