

WIRTSCHAFTLICH, FLEXIBEL, STARK

Economical, flexible, strong - économique, flexible, forte - economica, flexible, fuerte

AUSSTATTUNG

Facilities - Equipements - Instalaciones



Seilwinde
Cable winch
Treul ó Cábile
Cabrestante



Hubarbeitskorb
Man Basket
Panier de Travail
Hombre cesta



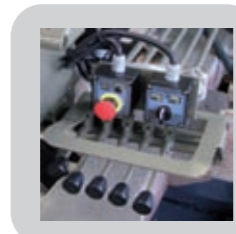
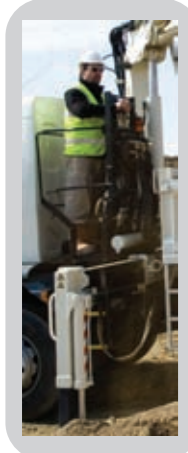
Z-Arm
Jib-Boom
Braz Z
Brazo en Z

Zusatzabstützträger
Additional outriggers
D`autres stabilisateurs
Adicional estabilizadores



STEUERUNG

Control - Contrôle - Control

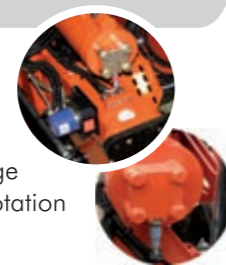
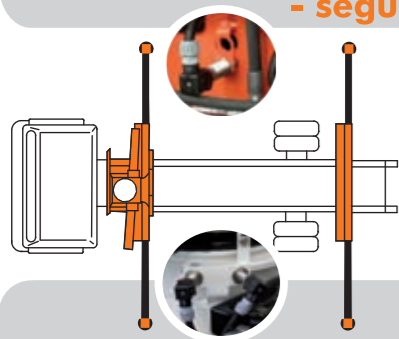


ABSTÜTZÜBERWACHUNG

Monitoring of the stabilizing support - suivi de l'appui de stabilisation - seguimiento del apoyo estabilización

(EAW) nach EN 12999

elektr. Überwachung der Abstützweite und des Schwenkwinkels
electr. monitoring of the stabilizing support wide and the slewing range
contrôle électrique de l'écartement de stabilisation et de l'angle de rotation
control electrico de los estabilizadores y del angulo de rotación



WERKZEUGE

Tools - Outils - Herramientas



Steinstapelzange
Brick Stack Grapples
Pinces á Parpaings
Pinza



Greifer
Grabber
Grappin
el garfio



Krangabel
Pallet Fork
Fourches
Paleta Tenedor



ATLAS



sicher

safe, sécurité, seguro

flexibel

flexible, flexible, flexible

innovativ

innovativ, innovante, innovadora

effizient

efficient, efficace, eficiente

kraftvoll

powerful, puissant, poderoso

erreichbar

available, joignable, alcanzado

Atlas Maschinen GmbH



Stedinger Straße 324
D-27751 Delmenhorst
Tel. +49 (0) 4221-491 - 0
Fax +49 (0) 4221-491-443
info@atlasgmbh.com

www.atlasgmbh.com

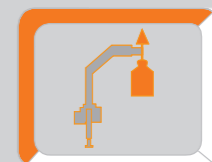
YOUR CONTACT INFORMATION

ATLAS

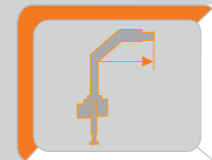
Krane / Cranes / Grues / Grúa



Ladekran AK 88.3



max : 4500 kg



max : 16,30 m



max : 280 bar

AVAILABLE & COST EFFECTIVE

ATLAS

- AVAILABLE & COST EFFECTIVE -

ATLAS

Order Nr.- 6142616

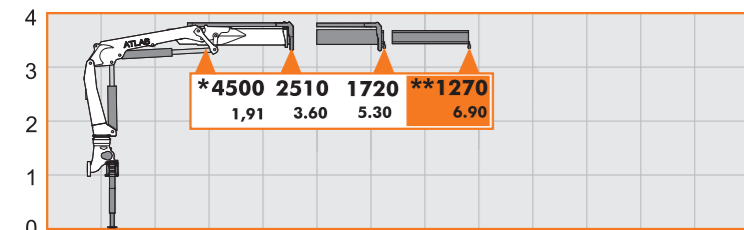
- AVAILABLE & COST EFFECTIVE -

Copyright ©Atlas Maschinen GmbH 2010

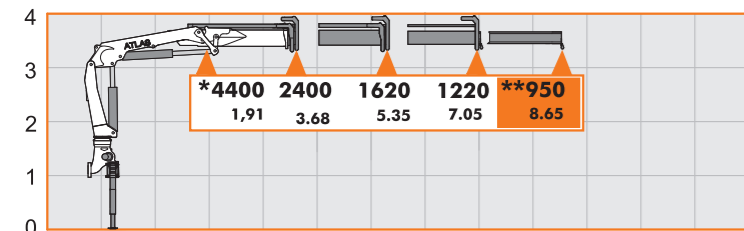
LASTDIAGRAMM

Load Diagram-Courbes de charges-Curvas de cargas - Diagramma di portata

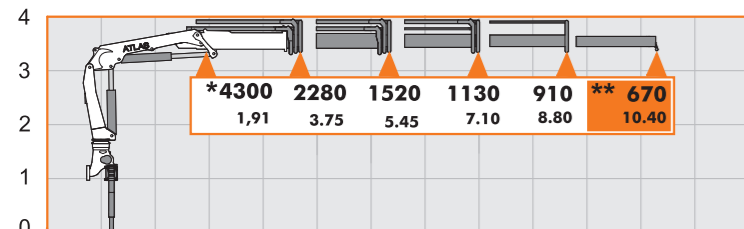
AK 88.3



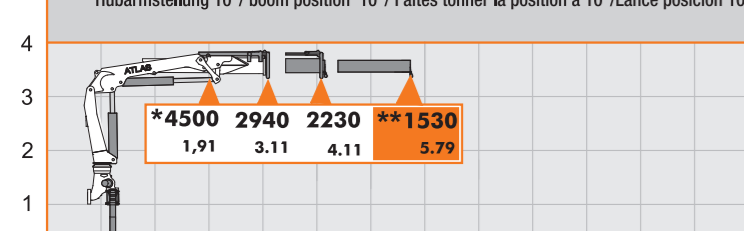
A1



A2

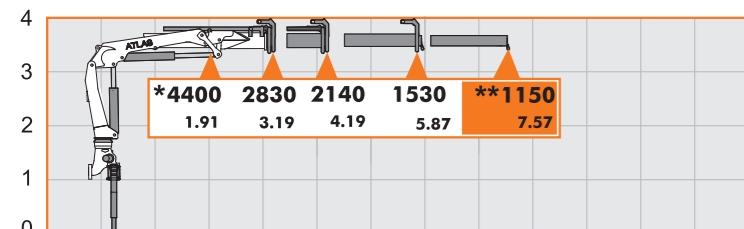


A3

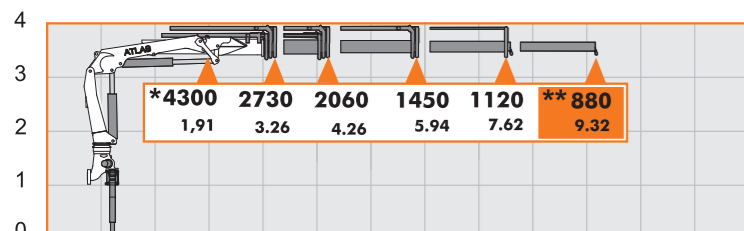


A1SL

Kg - Traglast/lifting capacity/En soulevant la capacité /Levantando capacidad in "Kg"
m - Mass/measurement/des mesure/de medición in "m"



A2SL



A3SL

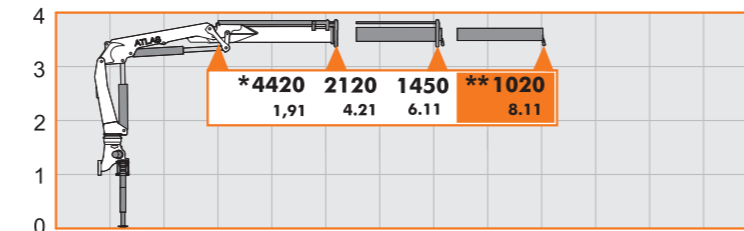
** - Optional
manuelle Verlängerung
manuel extension
l'extension mécanique
extensiones manuales

* - zusätzlicher Lasthakenpunkt am Knickarm
additional load hook point at jib
supplémentaires point crochet à flèche
carga adicional punto de gancho en la horca

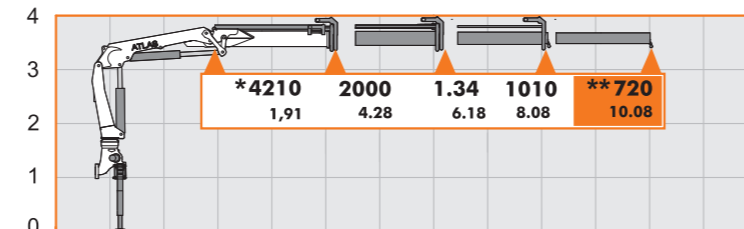
LASTDIAGRAMM

Load Diagram-Courbes de charges-Curvas de cargas - Diagramma di portata

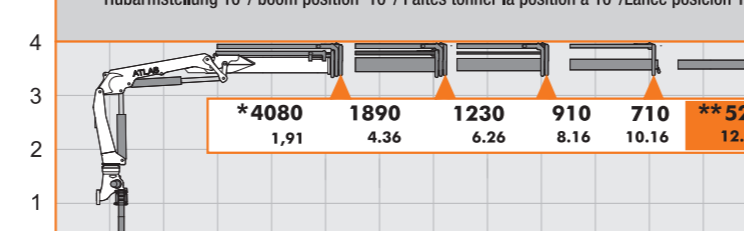
AK 88.3



A1L

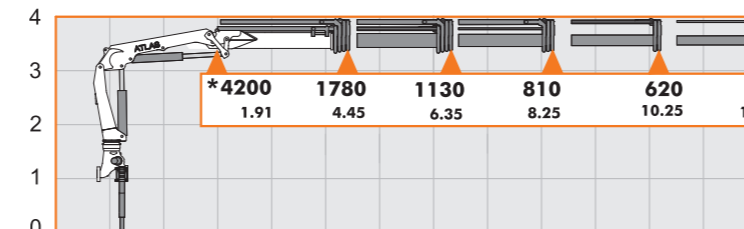


A2L

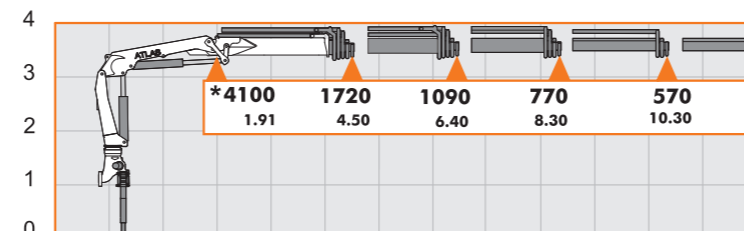


A3L

Kg - Traglast/lifting capacity/En soulevant la capacité /Levantando capacidad in "Kg"
m - Mass/measurement/des mesure/de medición in "m"



A4L



A5L

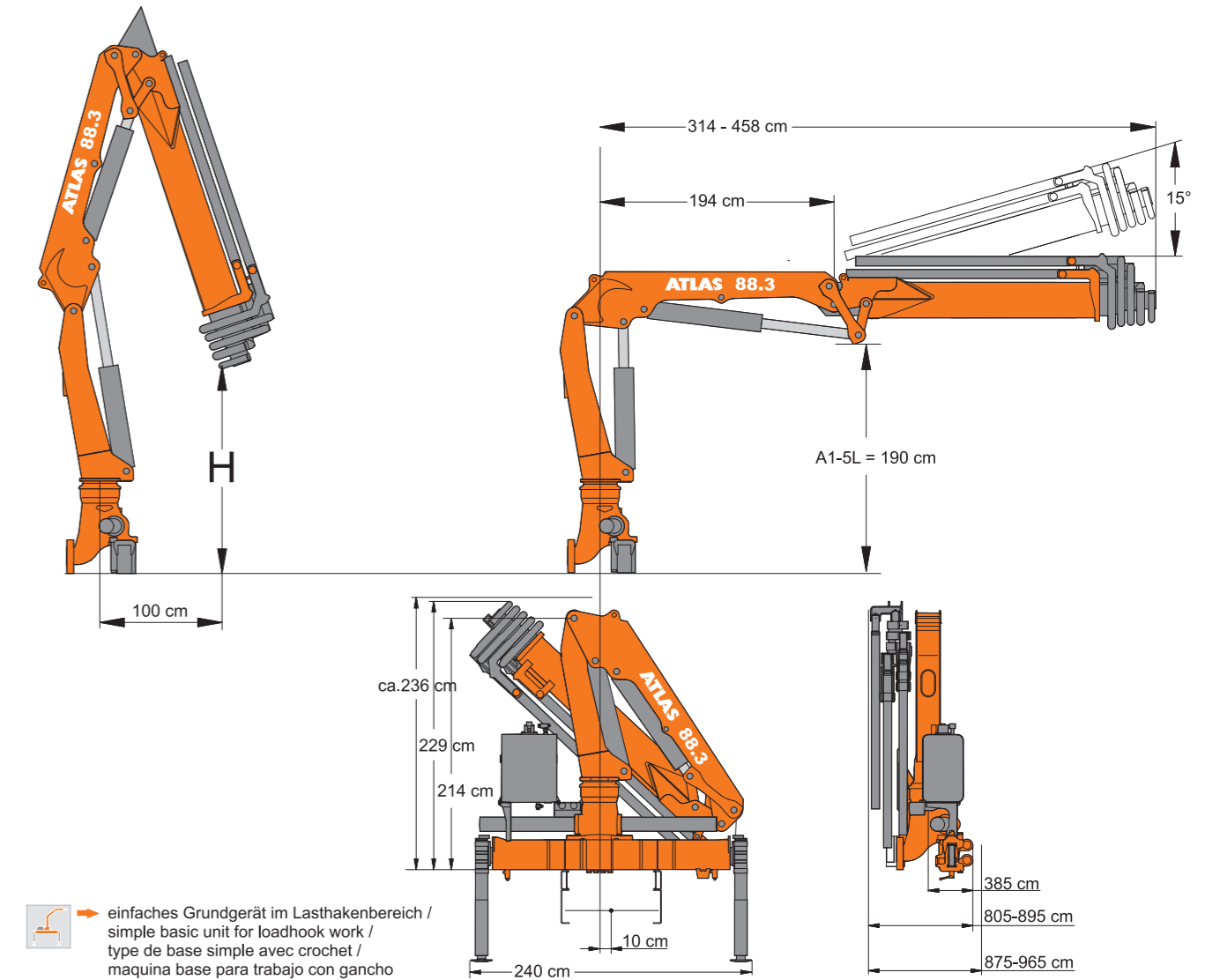
** - Optional
manuelle Verlängerung
manuel extension
l'extension mécanique
extensiones manuales

* - zusätzlicher Lasthakenpunkt am Knickarm
additional load hook point at jib
supplémentaires point crochet à flèche
carga adicional punto de gancho en la horca

ABMESSUNGEN

Dimensions - Dimensions - Dimensiones

LADEKRAN AK 88.3



→ einfaches Grundgerät im Lasthakenbereich /
simple basic unit for loadhook work /
type de base simple avec crochet /
maquina base para trabajo con gancho

Typ	AK 88.3		H1/B3			
	Gewicht Weight Peso	H	Betriebsdruck operating pressure pression de service Presión de servicio	Ölfördermenge oil supply amount débit d'huile Caudal de aceite	Schwenkbereich swivel range plage de pivotement Alcance de giro	Schwenkmoment swivel moment couple de pivotement Par de giro momento
	Kg	m	bar	l/min	kNm	mt
A 1	1292	2,66				9,04
A 2	1392	2,56				8,82
A 3	1475	2,47				8,55
A 1SL	1227	3,27				9,14
A 2SL	1324	3,18				9,02
A 3SL	1415	3,08	280	35	410°	27,4
A 1L	1330	2,05				8,92
A 2L	1449	1,97				8,56
A 3L	1567	1,89				8,24
A 4L	1667	1,81				7,92
A 5L	1752	1,69				7,74