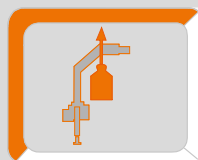


ATLAS

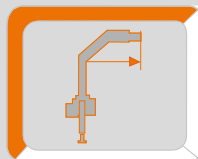
Krane / Cranes / Grues / Grúa



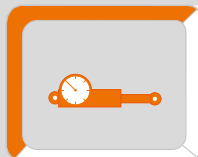
Ladekran AK 116.3



max : 5410 Kg



max : 16,38 m



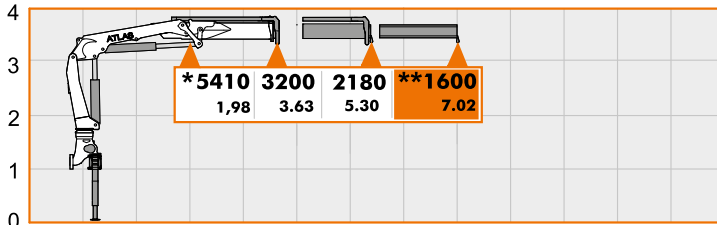
max : 290 bar

AVAILABLE & COST EFFECTIVE

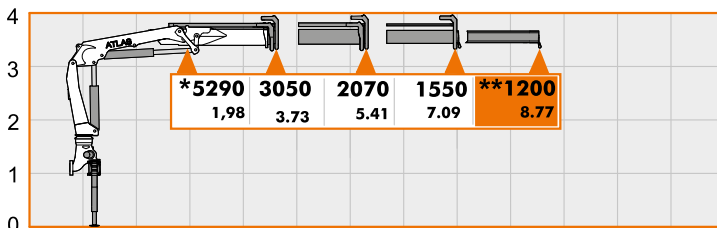
LASTDIAGRAMM

Load Diagram - Courbes de charges - Curvas de cargas - Diagramma di portata

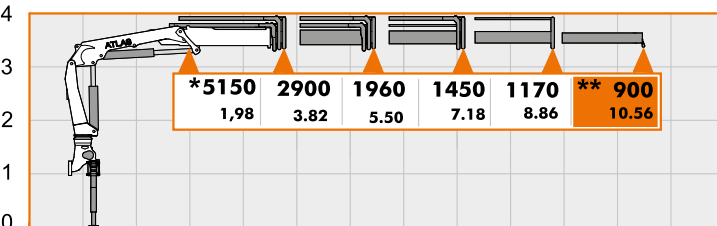
AK 116.3



A1

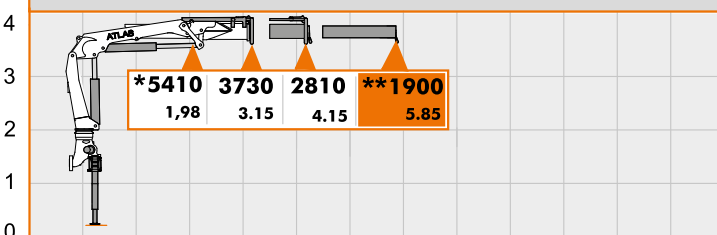


A2



A3

Hubarmstellung 10°/ boom position 10°/ Faites tonner la position à 10°/ Lance posición 10°

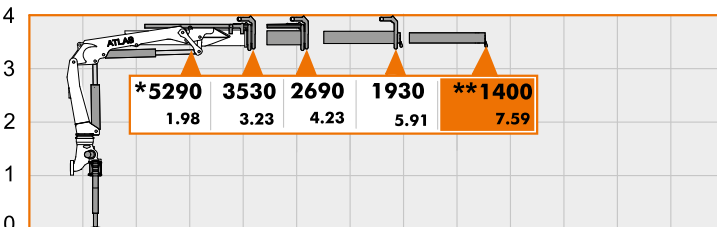


A1SL

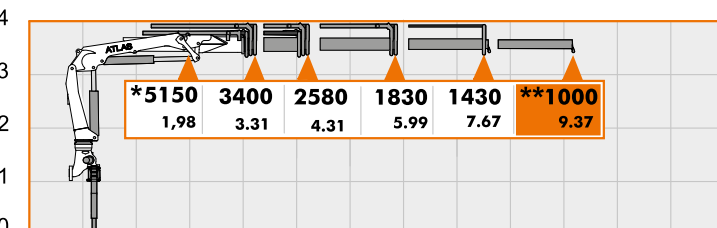
** - Optional
 { manuelle Verlängerung
 manuell extension
 l'extension mécanique
 extensiones manuales

*
 { zusätzlicher Lasthakenpunkt am Nickarm
 additional load hook point at jib
 supplémentaires point crochet à flèche
 carga adicional punto de gancho en la horca

Kg - Traglast/lifting capacity/En soulevant la capacité / Levantando capacidad in "Kg"
 m - Mass/measurement/des mesure/de medición in "m"



A2SL



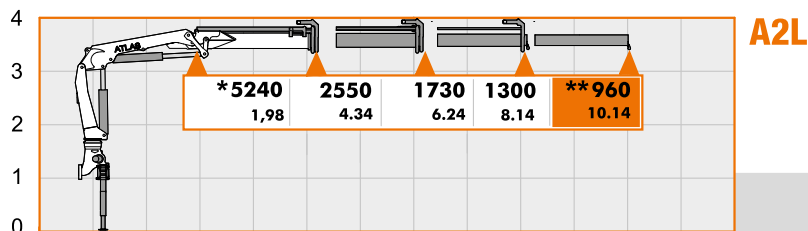
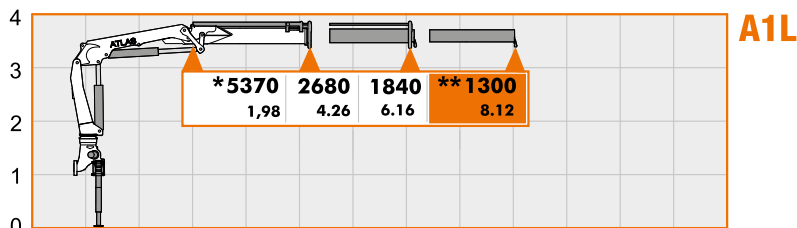
A3SL

m 1 0 1 2 3 4 5 6 7 8 9 10 11 12

LASTDIAGRAMM

Load Diagram - Courbes de charges - Curvas de cargas - Diagramma di portata

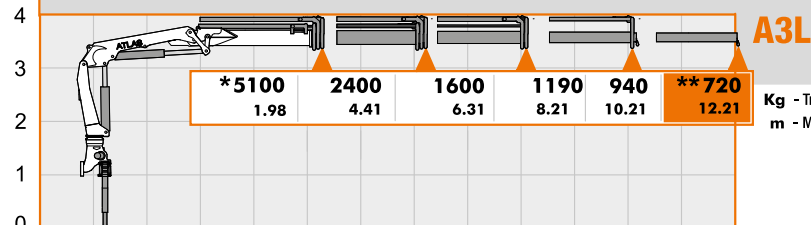
AK 116.3



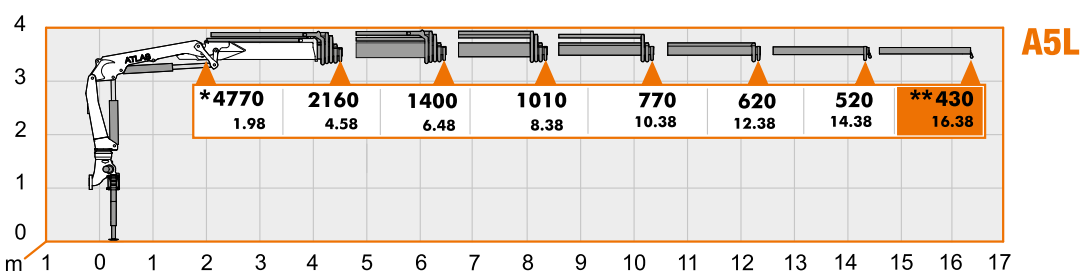
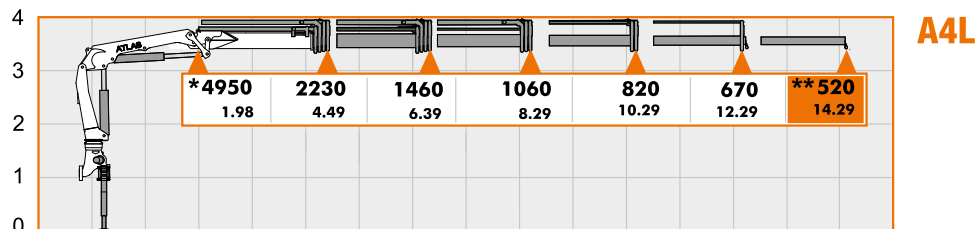
Hubarmstellung 10°/ boom position 10°/ Faites tonner la position à 10°/ Lance posición 10°

****** - Optional
 manuelle Verlängerung
 manuell extension
 l'extension mécanique
 extensiones manuales

***** -----
 zusätzlicher Lasthakenpunkt am Knickarm
 additional load hook point at jib
 supplémentaires point crochet à flèche
 carga adicional punto de gancho en la horca



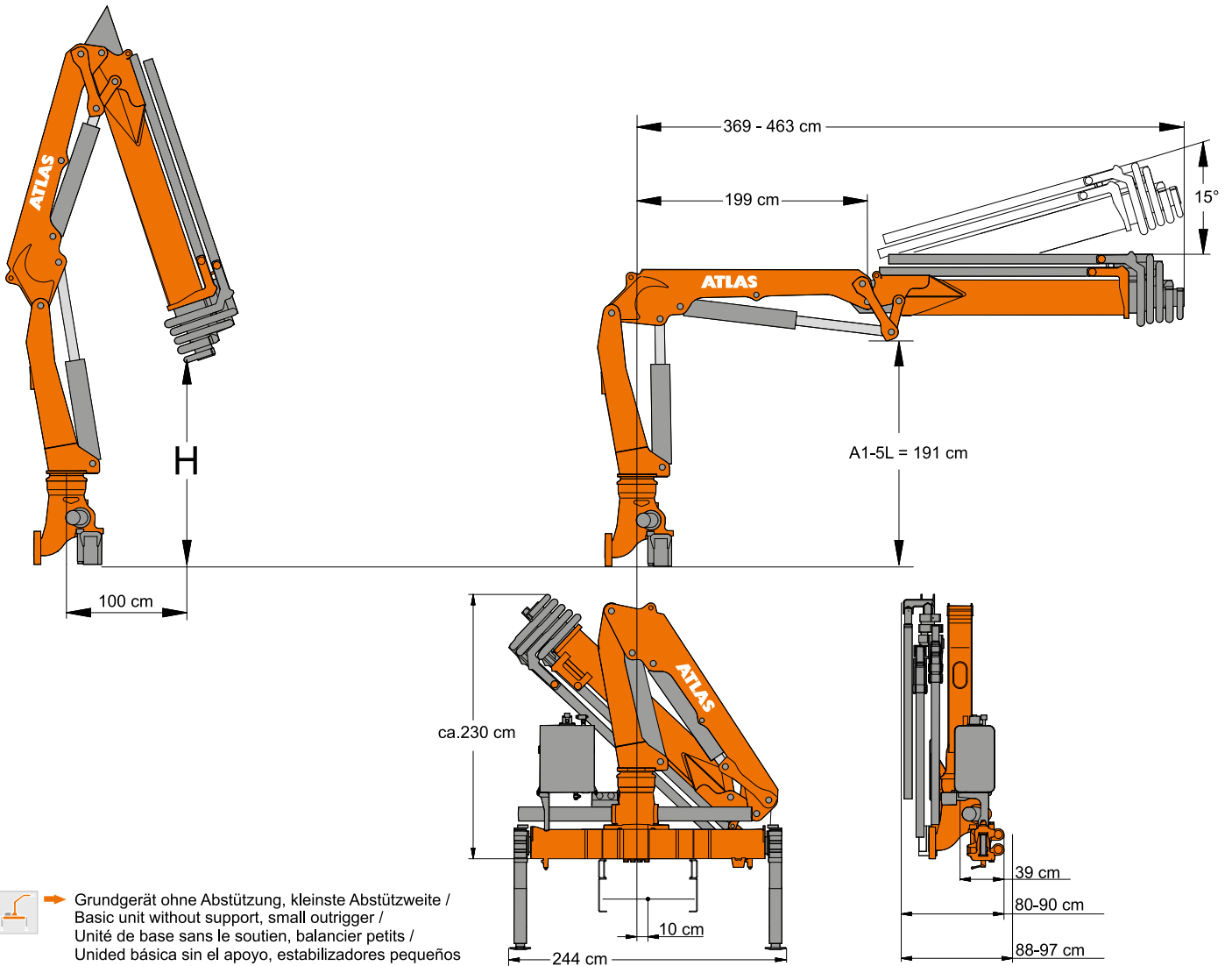
Kg - Traglast/lifting capacity/En soulevant la capacité /Levantando capacidad in"Kg"
m - Mass/measurement/des mesure/de medición in"m"



ABMESSUNGEN

Dimensions - Dimensions - Dimensiones

LADEKRAN AK 116.3



AK 116.3

H1/B3

Typ	Gewicht Weight poids Peso	H	Betriebsdruck operating pressure pression de service Presión de servicio	Ölfördermenge oil supply amount débit d'huile Caudal de aceite	Schwenkbereich swivel range plage de pivotement Alcance de giro	Schwenkmoment swivel moment couple de pivotement Par de giro momento	Hubmoment moment de levage Momento de elevación Momento di sollevamento
	Kg	m	bar	l/min	°	kNm	mt
A 1	1357	3,84					11,64
A 2	1452	3,56					11,38
A 3	1538	3,35					11,08
A 1SL	1290	4,08					11,75
A 2SL	1388	4,10					11,40
A 3SL	1477	4,11	290	45	410°	27,4	11,25
A 1L	1393	2,65					11,41
A 2L	1512	2,54					11,06
A 3L	1630	2,44					10,58
A 4L	1730	2,34					10,01
A 5L	1815	2,19					9,89

ATLAS

- AVAILABLE & COST EFFECTIVE -

ATLAS

WIRTSCHAFTLICH, FLEXIBEL, STARK

Economical, flexible, strong-économique, flexible, forte-economica, flexible, fuerte

AUSSTATTUNG

Facilities - Equipements - Instalaciones



Seilwinde
Cable winch
Treuil à Câble
Cabrestante



Hubarbeitskorb
Man Basket
Panier de Travail
Hombre cesta



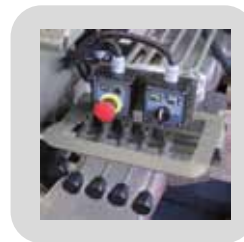
Z-Arm
Jib-Boom
Braz Z
Brazo en Z

Zusatzabstützträger
Additional outriggers
D'autres stabilisateurs
Adicional estabilizadores



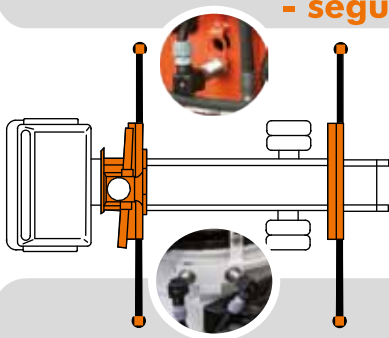
STEUERUNG

Control - Contrôle - Control



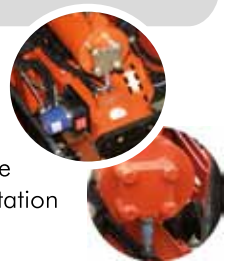
ABSTÜTZÜBERWACHUNG

Monitoring of the stabilizing support - suivi de l'appui de stabilisation
- seguimiento del apoyo estabilización



(EAW) nach EN 12999

elektr. Überwachung der Abstützweite und des Schwenkwinkels
electr. monitoring of the stabilizing support wide and the slewing range
contrôle électrique de l'écartement de stabilisatin et de l'angle de rotation
control electrico de los estabilizadores y del angulo de rotación



WERKZEUGE

Tools - Outils - Herramientas



Steinstapelzange
Brick Stack Grapples
Pincas á Parpaings
Pinza



Greifer
Grabber
Grappin
el garfio



Krangabel
Pallet Fork
Fourches
Paleta Tenedor



ATLAS



sicher

safe, sécurité, seguro

flexibel

flexible, flexible, flexible

innovativ

innovativ, innovante, innovadora

effizient

efficient, efficace, eficiente

kraftvoll

powerful, puissant, poderoso

ATLAS Maschinen GmbH

erreichbar

available, joignable, alcanzado



Stedinger Straße 324
D-27751 Delmenhorst
Tel. +49 (0) 4221-491 - 0
Fax +49 (0) 4221-491-443
info @atlasgmbh.com

www.atlasgmbh.com

YOUR CONTACT INFORMATION