

精心打造 · 用心服务

CHANGLIN

918

轮式装载机 WHEEL LOADER



操作重量 5450kg
 Operating Weight 5450kg
 额定载重量 1800kg
 Rated Load 1800kg

额定斗容量 1m³
 Standard Bucket Capacity 1m³
 最大卸载高度 2490mm
 Max. Dumping clearance 2490mm

发动机额定功率 45kw
 Rated Power 45kw
 发动机额定转速 2300rpm
 Rated Speed 2300rpm

常林股份有限公司
 CHANGLIN COMPANY LIMITED



CDiTE常州长龄林业机械配件有限公司
 CHANGZHOU CHANGLING FORESTRY MACHINERY SPARE PARTS CO.,LTD.

经济性 Economy



■ 轮边减速器与桥壳为分体式结构, 使用成本低;

Separated structure of wheel-side reducer and axle cover make running cost much lower;

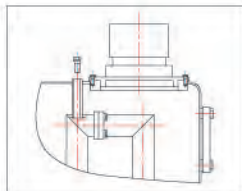


■ 洛拖(东方红)动力, 功率强劲, 瞬间爆发力强, 省油;

LUOTUO(DongFangHong) engine with large power reserve, strong instant eruption performance cuts down fuel consumption;

■ 采用新型组合仪表。外形美观, 质量可靠, 驾驶室空间增大, 操作更舒适。

Adopt the new unified system, with satisfactory appearance, and reliable quality, the space of cab is enlarged, more comfortable working environment for the operator.



■ 带真空设计的液压油箱, 确保意外时油品不泄漏;

Hydraulic oil tank with vacuum device avoids oil leakage when accident occurs;

■ 前二后二档设计, 为用户提供多种工作档选择, 作业效率高;

2 forward and 2 reverse shifts applicable in different working conditions improves working efficiency;



■ 三项和短, 单位时间内为您装卸更多的物料; Less time for lifting, lowering and dumping makes loader to carry more work;

■ 车长6128mm, 车宽2070mm, 车高2920mm Overall length 6128mm, overall width 2070mm, overall height 2920mm.

可靠性 Reliability



■ 双变系统设计超前, 定轴式变速箱, 三元件变矩器;

Mature fixed-shaft T/M and three-element T/C, Long-time tested;



■ 久经考验的品牌驱动桥; Long-time tested brand axle;

■ 先进的液压系统设计, 高品质专业用油, 让您无忧无虑施工

Advanced hydraulic system makes operator work with ease, High quality special oil;

■ 全液压转向, 转弯半径小, 操纵机动灵活; Full hydraulic steering system, small turning radius, make the loader more flexibility;

■ 低重心设计, 承重能力高; Low center of gravity assures the loader heavy loading;

■ 长轴距, 宽轮距的设计, 使整机具有优异的稳定性; The design long wheel base, wide wheel tread makes the loader more stable;

■ 键块式工程机械专用传动轴, 承载能力强; Key pattern drive shaft customized for construction machinery makes large loading capacity;



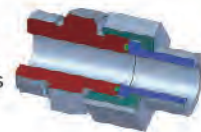
维修保养 Maintenance

■ 独特的发动机护罩侧门, 开启度大, 维修方便; Two hood side-doors open widely with up-foldable wings, providing engine daily-check and repair convenient;



■ 双变分体结构设计, 保养, 维修方便; T/M and T/C is designed separately, which ensures maintenance easier;

■ 液压系统管接头采用新型结构, 密封性优良; New structure of the hydraulic pipe joints makes them well sealed;



多功能性 Multifunctional



抓车 Clamp



草爪 Grass Clamp



叉 Fork



防滚翻 ROPS Frame



侧卸 Side-dump Bucket



煤斗 Coal Bucket

■ 抓具(车)设计制造专家, 目前国内保有量最大;

Due to expert of clamp design and manufacture, the total existing market share at present is biggest in China;

■ 另可配备破碎锤, 装煤斗, 高卸装置; Optional equipment like side-dump bucket, hydraulic hammer, coal bucket, high-dump device are available;

■ 遍布全国200多家服务网点, 为您提供便捷的服务和周到的技术支持。 More than 200 service centers all around the country, which shall provide you the convenient service and technology support

CAITE 常州长龄林业机械配件有限公司
CHANGZHOU CHANGLING FORESTRY MACHINERY SPARE PARTS CO., LTD.

地址(Add): 江苏省常州市长江中路301-1号
Failing load(North of Lushu Bridge), Changzhou, Jiangsu, P. R. of China
电话(Tel): 0519-86752445 86760068 传真(Fax): 0519-86750045
邮编(PostCode): 213002 http://www.changlin.com.cn

服务热线电话Service hotline: 0519-86752445
服务投诉电话Complaint line: 0519-86760068

