

FENDT

Fendt 900 Vario MT





There is only so much soil.
You can conserve it using Fendt.

The soil forms the basis of healthy crops and high yields. Managing it efficiently and with care ensures long-term economic success. In addition to efficiency and comfort, soil protection is our top priority when developing tractors. If you want the advantage of grip and soil, go for Fendt.



The perfect relationship. Fendt 900 Vario MT

Fendt 900 Vario MT combines the best of two worlds. The experience gained from the installation of more than 250,000 Vario gearboxes, and the know-how obtained from more than 30 years of experience with track tractors as well as the Fendt operator environment and Fendt Variotronic make it a modern and innovative tracked tractor.



	938 MT	940 MT	943 MT
kW/hp	279/380	298/405	317/431
Rated power ECE R 120			

Intelligence and performance combined. Unrivalled traction power meets Farming 4.0.

Machine power alone is no longer sufficient for efficient cultivation of large areas. Enormous potential lies in planning and documentation of work, and automatic control of partial widths and seed rates. Fendt Variotronic offers you the functions and interfaces that you need.

Everything you'd expect from a Fendt.

As opposed to the other tracked tractors, Fendt 900 Vario MT is not based on a standard tractor. It has been developed as a pure tracked tractor and you can feel that too. Widest attachments, steepest slopes, most difficult conditions. Fendt 900 Vario MT is ideal for these challenges.

- AGCO-Power 9.8-l seven-cylinder motor with TwinTurbo and up to 431 HP.
- Fendt iD low engine speed concept
- Fendt Concentric Air System
- Fendt VarioDrive drive concept
- Mobil Trac System with large contact area
- SmartRide chassis suspension
- ConstantGrip roller suspension
- Fendt cab suspension
- Fendt Variotronic[™] with VarioGuide, SectionControl, VariableRateControl, VarioDoc Pro
- Up to 440 l/min hydraulic power
- Full-fledged cat. III/IV lifting unit with 86.18 kN lifting power
- Dual PTO shaft 1000 & 1000E



Experience and innovation for your success.
The only way to really experience all the advantages of a tracked tractor is to choose the Fendt 900 Vario MT. It combines experience and innovation, which will help you and your company to move forward.

Fendt 900 Vario MT
The only real tracked tractor.

FENDT 900 VARIO MT MOBIL TRAC SYSTEM

You have the perfect setup thanks to our experience.

All advantages in one vehicle

The Mobil Trac System (MTS) of the new Fendt 900 Vario MT is the result of more than 30 years of experience with track tractors. The wheelbase has been extended by 13 cm to 2,565 mm as compared to the previous versions. The ground contact area is 1,612 cm² with 25" wide rolling tracks. In case of 30", it is 1935 cm². This means: more traction, less soil pressure; an optimal weight distribution across the entire contact area even in the case of a heavy load. And, of course, optimised driving comfort.

Unique suspension system

The Fendt 900 Vario MT offers unprecedented driving comfort for a tracked tractor, which can be experienced during field work as well as on road. This is mainly due to the innovative SmartRide suspension system. Here the front central carrier is mounted on the frame using coil springs, shock absorbers and silent rubber blocks and has a considerable spring stroke of 260 mm. The central carrier can oscillate by 11° for best ground-hugging. A coupling rod (Panhard rod) prevents lateral movement reliably.

Full contact for best grip

The three rollers of the Mobil Trac System play a decisive role when it comes to permanent power transmission. In Fendt 900 Vario MT, they are attached to the chassis frame in a unique Tri Bogie design. This way they achieve an enormous suspension travel and make it possible to flexibly adapt the rolling track to the ground contour. Hence the weight is always distributed across a maximum contact area and the entire rolling track is always in contact with the ground. Power can therefore also be permanently transmitted.

The widest choice

The rolling tracks establish contact between the tractor and the ground. They are the key to power transmission. A wide range of rolling tracks is available for Fendt 900 Vario MT. There are two rolling tracks, which are specially design for agricultural use, where one version is enhanced for special uses.

The idlers can be weighted down with up to 1580 kg.



Optimal power transmission is ensured by the rear drive wheels, which drive the rolling tracks.



Robust rear axle is built for a very long service life. The internal oil balance can be easily checked through the inspection glasses.



The middle rollers are spring-mounted and adapted to the ground contour in order that ground contact is not lost and power can be permanently transmitted.

FENDT 900 VARIO MT MOBIL TRAC SYSTEM

Constant traction for continuous propulsion.

Constantly under tension

The Mobil Trac System works through traction. Perfect traction between the drive sprocket and the treadbar ensures that Fendt 900 Vario MT converts its power into permanent propulsion. A hydraulic cylinder mounted on the chassis frame pushes the idlers forward and thus creates tension so that traction is never lost. Since the tensioning system works in one direction, the bearings are reliably protected thanks to the symmetrically acting forces. The right pressure is set automatically; it is comfortably controlled via the Varioterminal 10.4".

Always clean on the track: Guide wheel

The front guide wheel keeps the Fendt 900 Vario MT clean on the track. It is 950 mm in diameter. The guide wheel is also offered in two different widths for different rolling track widths. The correct width supports self-centring of the rolling tracks. The rubber coating of the idlers provides reliable contact with the treadbar.

Unique design: Rollers

Another unique feature that will let you experience the leading edge of the Mobil Trac System is the spring-mounted rollers. The three rollers are 355.6 mm in diameter and are attached to the chassis via a unique Tri Bogie suspension system called ConstantGrip. The special polyurethane coating of the snap-in ring inside the rollers reliably prevents heat generation even during continuous operation at high speeds. It also protects guide blocks inside the rolling tracks.

Ensures your progress: Drive sprocket

The drive sprocket has once again been improved in the latest evolution stage of the Mobil Trac System. It is 1550 mm in diameter and has a special coating with a herringbone pattern on the outside. The surface offers good self-cleaning properties and thus prevents accumulation of dirt. This results in reliable traction. There is a dirt extractor on the inside, which prevents contamination in the rim after every turn.

The middle rollers are fitted with different widths for perfect steering depending on the width of the treadbar.



Even on headlands, the Mobil Trac System shows its strength and does not create deep tracks.



Thanks to the innovative suspension concept SmartRide, Fendt 900 Vario MT offers unparalleled driving comfort for a tracked tractor.

FENDT 900 VARIO MT MOTOR

Reliably converts every drop of fuel into efficient power.

Fendt iD low engine speed concept

The powerful and highly efficient seven-cylinder motor of AGCO Power operates under the hood of Fendt 900 Vario MT. The engine generates up to 317 kW/431 HP from 9.8 l displacement at a rated speed of just 1700 rpm. Two turbochargers with fixed geometry, which are fitted in succession, ensure consistent power generation and never-ending power. Maximum torque of 1921 Nm is already achieved with 1450 rpm. This is made possible by the Fendt iD low engine speed concept. The speed range of the engine is between 1000 and 1700 rpm. During idle running, the engine speed is just 800 rpm. Experience unbridled power and extremely efficient work during every use thanks to Fendt iD.

Unique cooling system

Efficient cooling is ensured by the unique Fendt Fan and Concentric Air System (CAS) cooling concept. Here, a forced-draft high-performance fan is positioned in front of the cooler unit, where it sucks in cool dense air, accelerates it via the concentric hood and pushes it through the cooler. The CAS has its own hydrostatic drive, so it can always deliver ideal cooling power to each component according to need, independent of the engine speed. The fan is tilted upwards, which prevents harvesting residue from being sucked up from the ground.

Economical, low-emission, environmentally friendly

The Fendt 900 Vario MT fulfils the strict emission regulations level 4/tier 4 final. With the injection pressure of 2000 bar, combustion takes place very cleanly. A very small amount of particles is generated in the process, which makes a diesel particulate filter unnecessary. The electronically controlled and cooled exhaust gas recirculation recirculates a small part of the exhaust gases back to combustion. Other parts of exhaust gas treatment are the diesel oxidation catalyst, in which AdBlue is also injected for emission control in the exhaust gas flow. This is followed by the SCR catalytic converter, which is housed in the lower part of the exhaust pipe on the right side of the vehicle and does not hamper the front view.

Easy maintenance for long operating times

Do not waste time on extensive maintenance. Take advantage of the long maintenance intervals and perfect accessibility. Fresh air is sucked in at the front. The Venturi system of the air filter prevents many dirt particles from getting sucked in. In addition, a dust extraction system, which is driven by the vacuum of the CAS, ensures that the air filter remains efficient for longer periods. A contamination sensor constantly monitors the status of the filter and reports upcoming maintenance if required. You can carry this out quickly and easily thanks to good accessibility. The constant further development of AGCO Power engines along with the low maintenance effort makes Fendt 900 Vario MT a totally reliable workhorse.

Two turbochargers with fixed geometry and electronic wastegate control provide enormous torque across the entire speed range.



The fuel filter is very easy to reach for routine maintenance.



The Concentric Air System offers a large cooling capacity with maximum efficiency along with an unparalleled high efficiency.



A large intercooler with a heat exchanger as an intermediate intercooler ensures perfectly temperature-controlled inlet air.



The air filter is easy to replace and has a dirt sensor, which provides information on the filter effect.



The diesel tank encompasses the cab from the rear and has a capacity of 680 litres. Optionally, there is an additional tank with 132 litres capacity.

FENDT 900 VARIO MT VARIODRIVE

Fendt VarioDrive: Drive of a new generation.

Vario gearboxes of the latest generation

The revolutionary Fendt VarioDrive drivetrain from the standard tractor Fendt 1000 Vario has been extensively and optimally adapted for the Fendt 900 Vario MT. The result was the innovative and efficient continuously-variable drive for tracked tractors, which fulfil all the practical requirements. As a result, you can drive in a continuously-variable power-split way in a speed range from 20 m/h to 40 km/h and without having to manually change between the speed ranges. You can therefore always work within an optimal speed range with minimum slippage when operating Fendt 900 Vario MT. What you experience is huge power transmission and the best jerk-free ride comfort.

High-performance hydrostatic devices

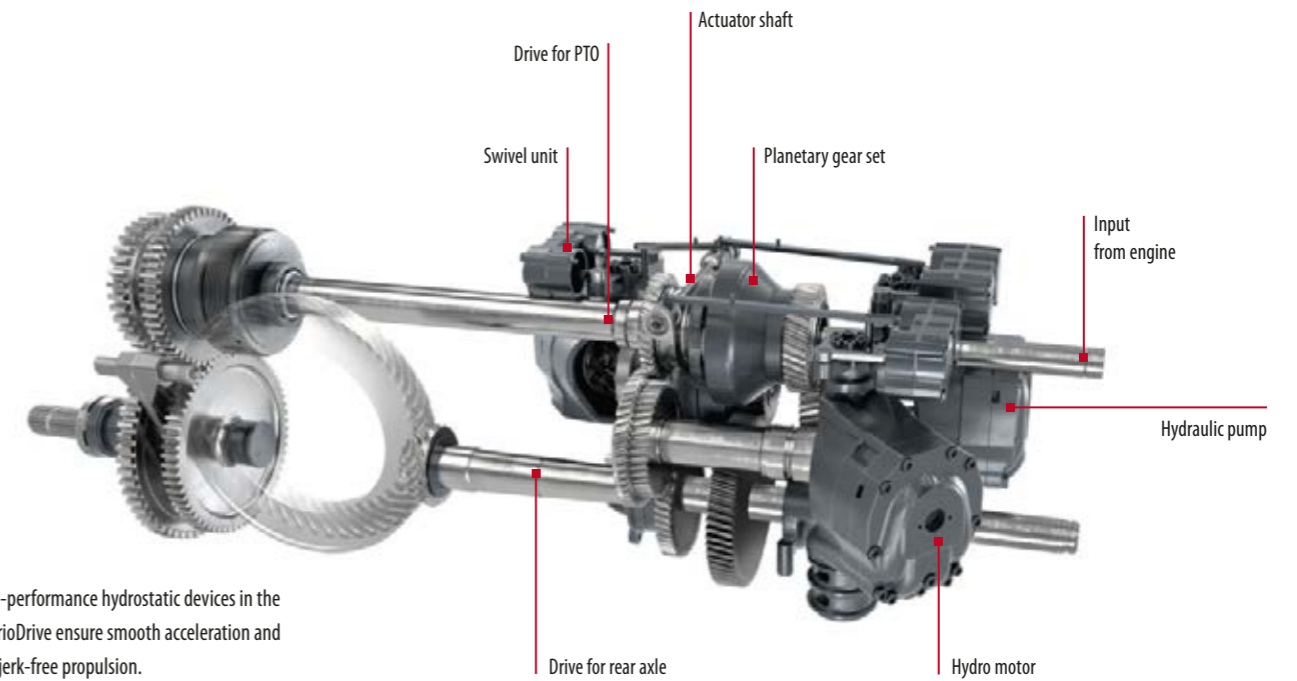
The heart of VarioDrive drivetrain is formed by the extremely large and powerful hydrostatic devices. Both the devices have a volume of 370 cm³ each. The hydro-motors can swivel independent of each other. This way, the VarioDrive drivetrain achieves maximum efficiency in every situation. In order to further increase the efficiency, the second hydrostatic device is decoupled at higher speeds (more than approx. 20 km/h) as soon as it swivels back.

Automatic in optimal range

Thanks to the Fendt VarioDrive drive, you can always drive automatically within the most efficient range. The Fendt 900 Vario MT achieves a transport speed of 40 km/h at a low 1550 rpm. The renowned Tractor-Management-System TMS along with the automatic maximum load control ensures that Fendt 900 Vario MT delivers the most efficient results during every operation and that too without elaborate settings at your end. Together with Fendt iD low engine speed concept, experience sheer power with lowest possible consumption.

Everything under one roof

It was never easier to control a tracked tractor to perfection. For Fendt 900 Vario MT, the motto is: Sit down and set off. Select your preferred driving strategy in the armrest: Drive the Fendt 900 Vario MT using either the Variostick or the accelerator pedal. In the process, the TMS maintains an optimal ratio of the rpm and driving speed. You can also select the engine speed using the accelerator pedal and the speed using the Variostick. If the TMS is deactivated, you can control the speed and the engine speed absolutely independent of each other.



Two high-performance hydrostatic devices in the Fendt VarioDrive ensure smooth acceleration and efficient jerk-free propulsion.



Maximum performance in the field and on road: The Fendt Vario 900 MT offers a completely new driving experience thanks to Fendt VarioDrive.

FENDT 900 VARIO MT HYDRAULICS/LINKAGE/PTO

No compromise when it comes to performance and possibility.

Attachments under complete control

Matching the power and performance of Fendt 900 Vario MT, the hydraulic system has also been developed for maximum performance. Select either 220 l/min or 440 l/min pump capacity. The latter version has two separate circuits with 220 l/min capacity each. Both the versions deliver their maximum performance at 1700 rpm. The removable oil quantity is 125 l. The gear oil supply is of course separate from the hydraulic oil supply. The steering system has its own separate system. This means that there is enough oil at your disposal for the attachments.

Interfaces at the rear

Both hydraulic pumps share the work perfectly; one of the pumps is directly coupled to the left valve block and supplies to valves 1-3 and the Power Beyond connection. The second supplies to the right valve block with valves 4-6 and the powerful linkage. All in all, maximum six valves are possible in the rear. Remain flexible with cartridge applications: the 1/2" couplings offer a flow rate of up to 140 l/min. The 3/4" coupling as well as the comfortable Flat Face Coupler (FFC) permit up to 170 l/min. All the valves at the rear can be coupled under pressure on both sides (DUDK).

Complete lifting unit

You can couple three-point attachments onto the Fendt 900 Vario MT just as comfortably as onto a standard tractor. The rear linkage has a 86.18 kN lift capacity. In addition to power, enjoy the greatest comfort: the rear linkage can be operated at both the rear mudguards. shock load stabilising/damping when driving on road contributes to high ride comfort and road safety. Gearbox pressure sensors are used for controlling the linkage. You can control the attachments perfectly via the comfortable power lift module in the armrest.

Direct power transmission

In order to transmit power of the AGCO Power engine to the PTO-operated attachments efficiently, the PTO is almost directly connected to the crankshaft. Only one gear level lies in between. This facilitates high effectiveness. Two speeds are at your disposal: 1000 at 1650 rpm or 1000E at a favourable 1255 rpm. The speed is pre-selected simply and without complication at the touch of a button in the cab. The PTO is similarly activated. Alternately, it can also be activated at both the rear mudguards.

The hydraulic connections are marked in colour. This way, you can couple devices quickly and safely.



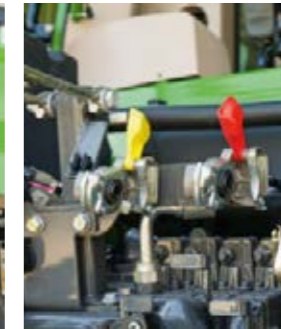
The hydraulic system is designed for maximum performance and offers the option of up to 440 l/min performance at 1700 rpm.



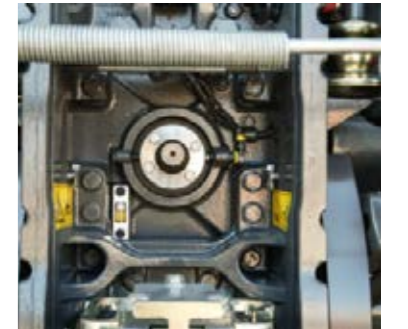
Operate the rear linkage, the PTO and a control unit conveniently from the rear mudguards.



The dual-circuit air brakes also act on the trailer when the parking brake is applied.



Select between two PTO speeds: 1000 and 1000E.



FENDT 900 VARIO MT CAB

The workplace you've always wanted.

Welcome home

When you are seated in the cab of the Fendt 900 Vario MT, you'll feel at home as a Fendt driver! The operation concept is a feature of all the self-propelled Fendt machines. This helps the drivers to find their way quickly. All settings are implemented easily and quickly and the attachments are safely operated.

New driving comfort

With its 2-point cab suspension, Fendt 900 Vario MT offers spring stroke between the driver and the ground like no other tracked tractor. Robust coil springs with integrated shock absorbers at the rear and two silent spring blocks at the front absorb the vibrations in the field and on the road. The spring stroke at the rear is 98 mm. The damping elements operate precisely and sensitively in order to make your work as pleasant as possible even on long working days.

Creates a feel-good atmosphere

The Fendt cab offers an excellent view in all directions thanks to the low side lines, narrow bars and handily-placed exhaust pipe with SCR catalytic converter. A 6.27 m² glass area ensures that you get a full view and converts the 3.06m³ cab along with the materials used into a bright, friendly workplace. Moreover, it is ROPS-certified.

Sophisticated interior

For long working days, the cab offers numerous storage compartments and 12 V USB connector for charging mobile phones and tablets. The operator's seat is available in three versions and can be easily cleaned thanks to the leather cover. Even the instructor seat is made of leather and offers first-rate comfort. If required, it can be folded down and used as a beverage holder. If the sunlight is too bright, sun blinds on all four sides protect the driver from disruptive glare.

Three different seats are available to match your individual requirements.



You can climb into the spacious cab via a ladder that can be folded up and down automatically.



The leather instructor seat offers high comfort.



Here's everything you need to know: The storage compartment in the armrest offers sufficient space.



The numerous storage options are important on long working days. They also keep the cab tidy.



The high-quality sound system caters for entertainment.



Power connections for external consumers are tidily arranged and can be easily accessed in the roof area.

FENDT 900 VARIO MT: OPERATION

Moving mountains can be so easy!

Standard operating philosophy

A modern and comfortable workplace awaits you in the Fendt Vario 900 MT. The multi-functional armrest offers you fast and comfortable access to all tractor functions required during your work. Its height and position can be adjusted. The Varioterminal 10.4" permanently displays all the important settings, the steering system or the attachments so that you can continuously keep an eye on all the machine data.

Everything in one place

Using just one multi-functional joystick, you can control all the important tractor functions. In addition to the driving speed and direction, you can also control the acceleration in four stages. With the help of two buttons, directly select two different cruise controls or activate a saved engine speed. Activate the Variotronic^{TI} headland management using the Go and End buttons. This way you have complex attachments under control and get to experience reduced workload on headlands.

Complete rear linkage

You can expect a complete rear linkage at the rear of the Fendt 900 Vario MT. You can conveniently control this from the armrest in seconds: The rear linkage operation module is located directly next to the multi-functional joystick and the joystick for hydraulic valves.

Hydraulic system & membrane keys

You can operate the powerful hydraulic valves using a toggle switch in the armrest, which is easily accessible and clearly structured. The response behaviour of the toggle switches can be adapted to your requirements. Moreover, a joystick is also available for hydraulic operation directly next to the joystick with which you can operate two valves. The valves can be freely assigned. Select the assignment comfortably in the Varioterminal at the touch of a button. Here you can also adjust the flow times and quantities easily and control your attachments to get the best results.

Adjust the position of the steering wheel with the foot pedal.



Activate the headlights and working lights on the left side of the instrument panel.



Control the extremely powerful air-conditioning system directly from the dashboard.



The exclusive spoke steering wheel provides controls for the audio system.



Adjust the gearbox, hydraulic and PTO settings using the membrane keys in the armrest.



Using the multi-functional joystick, control the speed, cruise controls, engine speed memory and headland management.

FENDT 900 VARIO MT VARIOTRONIC

Intelligent solutions meet huge tractive power.

Quick and easy operation

Varioterminal 10.4" is the pivotal point of all intelligent solutions in Fendt 900 Vario MT, which is used to make all the important settings such as automated steering. It combines the touchscreen and key control, with which you can control the tractor and the attachments safely and ergonomically in any driving conditions and according to your preference. Here you can also control the innovative and extensive headland management VariotronicTM. Sequences can be programmed both from the stationary vehicle (offline editing) and while driving. Stored sequences can additionally be optimised from the stationary vehicle at any time. The system automatically detects the headland line from a GPS signal and executes the stored sequence fully automatically.

VarioGuide automated steering system

With the automatic steering system of Fendt VarioGuide, you can choose from the NovAtel[®] or Trimble[®] GNSS receivers. A number of correction signals are supported, depending on the receiver, for example, EGNOS/WAAS or also RangePoint[™] RTX[™], CenterPoint RTX[™], NTRIP. Existing Trimble[®] RTK infrastructures as well as NTRIP can continue to be used. Even without a correction signal, VarioGuide works reliably for up to 20 minutes with RTK accuracy via Trimble[®]-xFill[™] technology.

To the point

With the fully automatic SectionControl, you can always plant seeds or spread fertiliser precisely in the right spot. This prevents double treatment and distances are automatically maintained. With the aid of the SectionControl assistant, you can set the correction values for each implement, quickly and easily. The switch on and off points can be set precisely from the very beginning, which automatically results in economical application.

Apply flexibly

The new solution for precision farming, variable rate control function (VRC), is now available in combination with VarioDoc Pro. The need for operating inputs such as seeds or fertiliser is shown on application maps, which can be called up during operation and automatically executed. The big advantage: Operating inputs can be defined and planned in the field database and then applied with the utmost precision. This way you work accurately and also avoid unnecessary leftover amounts.

With Fendt VarioGuide, work with the accuracy you want year after year.



Perfect headland: Thanks to Fendt Variotronic, you can control even complex turning manoeuvres reliably.



ISOBUS attachment and Fendt VarioGuide automated steering are displayed in an overview on the Varioterminal.



FENDT 900 VARIO MT MAINTENANCE & SERVICE

Fulfils your expectations, on and next to fields.

Best access

Do not waste time on extensive and complicated maintenance. This is possible thanks to the well thought-out structure of the Fendt 900 Vario MT. The one-piece hood opens wide and provides access to inspection glasses and filters. The side parts can be easily removed. You can easily access the air filter via the ladder. From here, you can control the oil level on the dipstick quickly and easily. The oil tank for the drive of the CAS fan is attached above the engine. You can see the oil level through an inspection glass from the side. There is an inspection glass at the rear next to the PTO for the gear oil supply separate to the hydraulic circuit. The hydraulic oil and oil level in the middle rollers and the guide wheel can be quickly checked via the sight glass. You can safely replace the cab filter in the outer roof area thanks to the handrail and non-slip steps.

Long-term reliability

Rely on Fendt: Our wide network of experienced and modern equipped dealers ensure the operational readiness of Fendt machines. Moreover, you have the choice of flexible rental and service models for the Fendt 900 Vario MT thanks to AGCO Finance. This gives you full control over all costs incurred and sufficient flexibility. With the Fendt 900 Vario MT, an extended warranty of up to 10000 operating hours or 8 years is available if required.



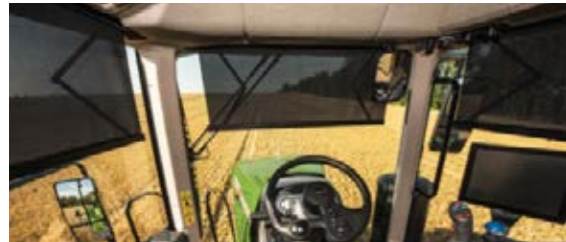
There is sufficient room for maintenance thanks to the large one-piece cover. You can comfortably reach the air filter from the ladder.

FENDT 900 VARIO MT EQUIPMENT DETAILS

Extraordinary details make it perfect.

FENDT 900 VARIO MT

Equipment variants.



■ The roller shades on all sides protect the operator from glare and neatly disappear into the roof liner.



■ There is a storage option even behind the operator's seat.



■ The instructor seat with seat belt serves as a bottle holder when folded down.



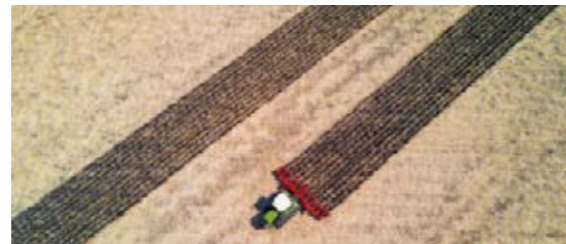
■ There is a storage compartment under the driver seat. That ensures there is order in the cab.



■ There are storage options even in the entrance area.



□ Thanks to the wide-angle mirrors, you can continuously keep an eye on the attachments.



■ You can choose from a number of receivers and signal versions with VarioGuide.



□ If required, the LED light package with its vast lighting turns night into day.



■ The extensive lighting package turns night into day.



□ The lighting with the LED light package is brilliant even to the front.



■ Full ISOBUS functionality brings you new options.



■ The 12 V connection at the rear of the machine supplies power to the external consumers.



□ The pressure for pre-tensioning the rolling track can be comfortably adjusted from the side by means of a connection.



□ The track width adjustment system makes the Fendt 900 Vario MT perfectly usable for row crops.



□ There is a compressed air connection at the machine front to blow out the air from the radiator.

Engine

Reversible fan	□
Engine preheating	□
Preheater unit (engine, transmission oil)	□

Gearbox

Vario TMS - Tractor Management System	■
Shuttle function, stop and go function	■
Cruise control	■

Vario control

Speed control lever with cruise control and engine speed memory, automatic modes	■
Varioterminal 10.4" with touchscreen and key control	■
Variotronic ³ - headland management system	■
Variotronic ³ - automatic	■
Preparation for automatic steering system	■
Guidance system VarioGuide NovAtel / Trimble	□
VarioDoc documentation system (only with Varioterminal 10.4")	■
VarioDoc Pro documentation system / AgCommand™ telemetry system (only with Varioterminal 10.4")	□
SectionControl	□
VariableRateControl	□

Cab

Mechanical cab suspension	□
Air-suspended comfort seat	■
Super Comfort Seat, air sprung	□
Instructor seat	■
Height and tilt-adjustable steering column	■
Heating with stepless fans	■
Air-conditioning	■
Integrated automatic climate control	□
Roller shade rear	□
Roller shade right	□
Parallel wipers front	■
Rear window wash/wipe	■
Ext. rearview mirror, electrically adjustable, heated	■
Radio CD MP3 hands-free speaking system	□
Radar sensor	■

Lighting system

Halogen headlights	■
Rear working lights	■
Working lights A-pillar	■
A-pillar LED working lights	□
Rear roof LED working lights	□
Working lights roof front LED	□
3rd brake light	■
Rotating beacons	■

Chassis

ContantGrip suspension	■
SmartRide suspension system	■
Stepless track adjustment	■
Treadbar with standard design	■
Treadbar with enhancement	□
Compressed air system 1-/2- circuit system	■

Power lift

Tractive power and stepless mixed control	■
Externally controlled rear power lift	■

PTO

Rear: Flanged PTO 1,000/1,000E rpm	■
External controls for rear PTO	■

Hydraulics

EHS valve actuation linear module	■
Load sensing system with axial piston pump (220 l/min)	■
Load sensing system with 2 axial piston pumps (220+210 l/min)	□
Up to 6 electr. proportional valves	□
Hydraulic power beyond connection	□
Unpressurised rear return flow	□
FFC flat sealing of rear hydraulic couplings	□
Double connect-under-pressure lever couplings rear	■

Design

Automatic trailer hitch without remote control, rear	■
Swinging drawbar Cat. 4	■
Swinging drawbar cat. 4 with cat. 3 adapter	□
Front weights, various sizes	□
Wide vehicle marker	□

FENDT 900 VARIO MT

Technical specifications.

		938 MT	940 MT	943 MT
Engine				
Rated power ECE R 120	kW/hp	279/380	298/405	317/431
Maximum power ECE R 120	kW/hp	279/380	298/405	317/431
No. of cylinders	Number	7	7	7
Cylinder bore/stroke	mm	111/145	111/145	111/145
Displacement	cm ³	9800	9800	9800
Rated engine speed	rpm	1700	1700	1700
Max. torque at 1450 rpm	Nm	1698	1806	1921
Fuel tank	litres	681	681	681
AdBlue tank	litres	71	71	71
Constant power range	rpm	1600-1700	1600-1700	1600-1700

Transmission and PTO				
Transmission type		TA 300T	TA 300T	TA 300T
Top speed	km/h	40	40	40
Rear PTO		1000/1000E	1000/1000E	1000/1000E
Engine rpm at rated speed of rear PTO (1000 PTO)	rpm	1650	1650	1650
Engine rpm at rated speed of rear PTO (1000E PTO)	rpm	1255	1255	1255

Power lift and hydraulics				
Variable flow pump	l/min	220	220	220
Variable flow pump option 1	l/min	440	440	440
Working pressure / control pressure	bar	200	200	200
Max. valves (front/centre/rear)	Number	0/0/6	0/0/6	0/0/6
Max. hydraulic oil filling	approx. litres	125	125	125
Max. available hydraulic oil volume	litres	100	100	100
Flow rate of control valves (all valves)	litres	140	140	140
Max. lift capacity, rear linkage	daN	11500	11500	11500

Electrical features				
Max. transferable current ISOBUS socket	A	60	60	60

Tracked conveyor tracks				
Central carrier suspension		SmartRide	SmartRide	SmartRide
Spring stroke on the front guide wheel	mm	260	260	260
Chassis suspension		ConstantGrip	ConstantGrip	ConstantGrip
Total width of drive wheel	mm	225	225	225
Total width of roller	mm	224	224	224
Series tracked conveyor tracks		25" Standard AG	25" Standard AG	25" Standard AG
1. Option of tracked conveyor track		25" Extreme AG	25" Extreme AG	25" Extreme AG
2. Option of tracked conveyor track		25" Extreme APP	25" Extreme APP	25" Extreme APP
3. Option of tracked conveyor track		30" Extreme AG	30" Extreme AG	30" Extreme AG

Dimensions				
Track width (in case of series tracked conveyor track)	mm	2032	2032	2032
Minimum track width (in case of series tracked conveyor track)	mm	2032	2032	2032
Maximum track width (in case of series tracked conveyor track)	mm	2235	2235	2235
Total width in case of series tracked conveyor track	mm	2667	2667	2667
Overall length	mm	5993	5993	5993
Overall height comfort cab	mm	3515	3515	3515
Max. ground clearance	mm	368	368	368
Wheelbase (drive sprocket to front guide wheel)	mm	2565	2565	2565

Weights				
Unladen weight (base tractor with cab - full tanks, without driver)	kg	15169	15169	15169
Max. perm. overall weight	kg	20900	20900	20900
Max. trailer hitch load	kg	3628	3628	3628

Safety and Service non-stop.

What makes the Fendt StarService different?

For us, service means knowing and understanding your work in order to meet your demands for reliability and safety and to act in your economic interest. We stand behind our products and have developed them for the highest demands and long-term operation. Our service is the partnership aspect for your work. In case of tracked tractors, a full manufacturer's warranty extension offers full cost control and planning reliability. In case of tracked tractors, flexible policy periods and long-term tariffs (with and without cost sharing) offer full coverage (except wear) for the first eight years or the first 10,000 operating hours. In addition to the usual repair costs, even other risks such as recovery and towing and vehicle diagnosis can be secured in a complete package.

Where are the Fendt tracked tractors developed and manufactured?

The Fendt tracked tractors are manufactured in Jackson, Minnesota (USA), our global competence centre for track tractors. Here, the tractors undergo numerous intensive tests before they leave the factory, so they can perform their best in your plant. Regular certification according to ISO standards confirms the high quality of the entire production process up until delivery.

fendt.com

Here you will find everything online, from brochures to technical specifications, reports about customers or the company, up to the Fendt event calendar.

Fendt Configurator

With the Fendt Vehicle Configurator, you can choose from all the available equipment variations and put together the optimally equipped vehicle for your farm. The Fendt Configurator is available online at www.fendt.com, where you will find a quick link to it directly on the start page.

fendt.tv

Fendt around the clock – our Fendt Media Library makes it possible. Our internet TV provides you with news and information about Fendt 24/7.

facebook.com/FendtGlobal

Over 200,000 fans have already friended Fendt on Facebook. Come have a look.



FENDT

Leaders drive Fendt!



www.fendt.com

AGCO GmbH – Fendt Marketing
87616 Marktoberdorf, Germany

 **AGCO**
Your Agriculture Company

Fendt is a worldwide brand of AGCO.
All data regarding delivery, appearance, performance, dimensions and weight, fuel consumption and running costs of the vehicles correspond with the latest information available at the time of going to press. Changes may be made before the time of purchase. Your Fendt dealer will be pleased to supply you with up-to-date information. Vehicles are not shown with country-specific equipment.