



SCORPION

9055 7055 7044 7035 7030 6030







SCORPION. You're serious about what you do – and so are we.

As key machines used for materials handling, telehandlers can offer crucial benefits on many farms. Accordingly, the main focus with every telehandler is on performance, economic efficiency and convenience.

The SCORPION meets all the requirements for an efficient telehandler. With a lifting capacity of up to 5.5 tonnes and a maximum lifting height of 8.75 metres, it is the perfect solution for all kinds of work.

At the heart of the machine is the intelligent VARIPOWER PLUS drive train, delivering unmatched standards in terms of driving comfort, precision and sensitivity.

The overall SCORPION package is impressively rounded off by a cab design that provides detailed solutions and optimum ergonomics, ensuring you can work efficiently 365 days a year.





Contents

The SCORPION at a glance	6
Chassis and boom	8
Loading system	10

CLAAS POWER SYSTEMS

Engine	14
Drive train	18
Running gear	23
Working hydraulics	26
Driver assistance systems	28

Cab

Ergonomics	34
Comfort	36

Maintenance	38
Attached implements	40
Technology in detail	48

Features	55
Specifications	56

SCORPION – even more features.

Lifting heights from 6.15 to 8.75 m

Counterweights with integrated stowage compartments¹

With up to 9 working headlights, also available as LED version



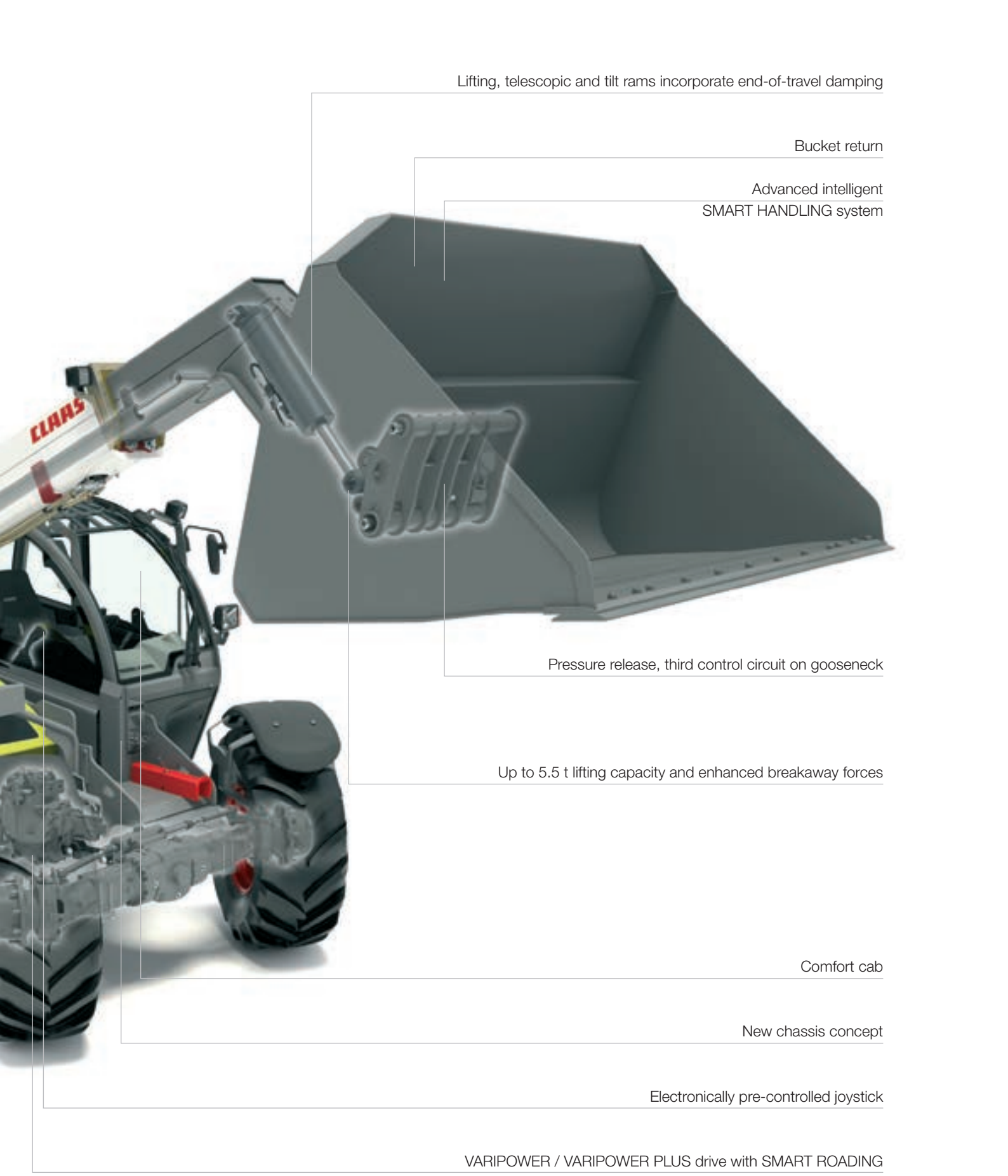
Load-sensing hydraulic system with up to 187 l feed performance

Engine performance up to 115 kW², emissions standard Stage IIIb (Tier 4i) / Stage IIIA (Tier 3)

Max. tyres 600/55–26.5¹

¹ Applies to 9055, 7055, 7044

² According to ECE R 120



Lifting, telescopic and tilt rams incorporate end-of-travel damping

Bucket return

Advanced intelligent
SMART HANDLING system

Pressure release, third control circuit on gooseneck

Up to 5.5 t lifting capacity and enhanced breakaway forces

Comfort cab

New chassis concept

Electronically pre-controlled joystick

VARIPOWER / VARIPOWER PLUS drive with SMART ROADING

The SCORPION at a glance

Excellent grip and stability for maximum lifting capacity.

Loading system.

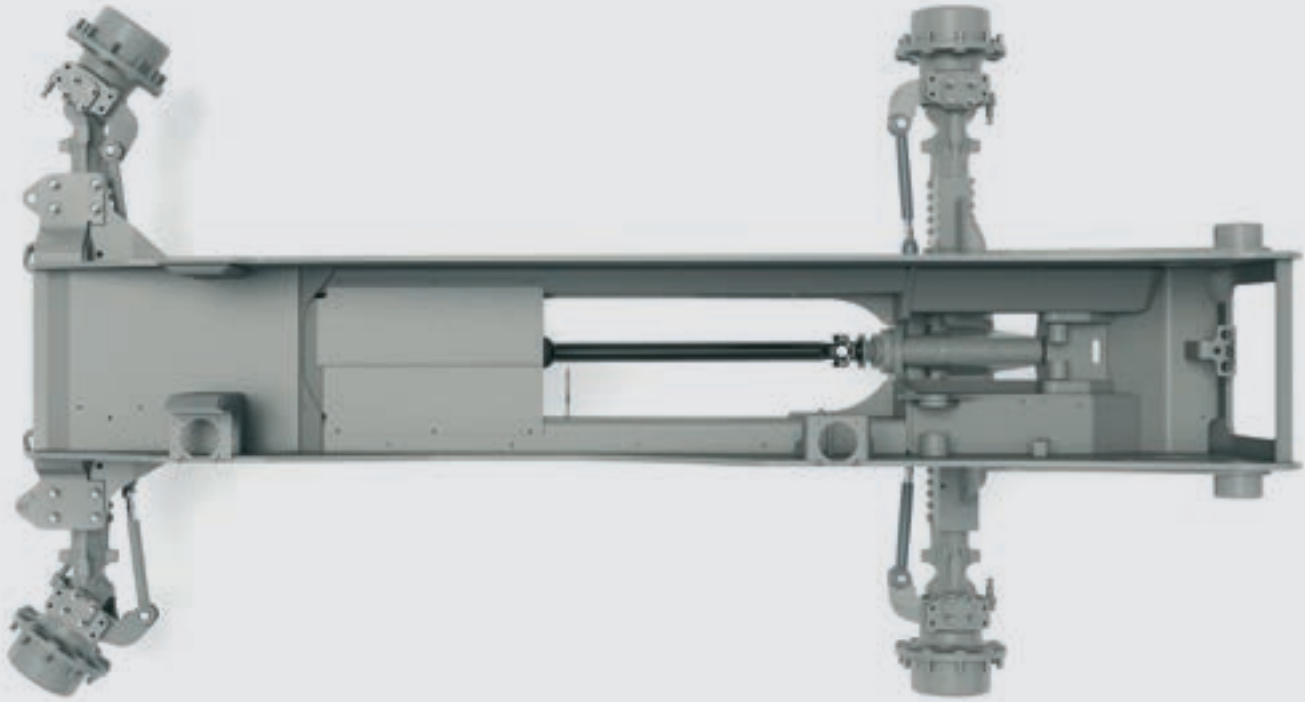
With the newly designed one-piece frame, the SCORPION has a lower centre of gravity. Thanks to its modular construction, it has extremely high torsional rigidity and good stability under all conditions. The boom is folded deep within the chassis and is smoothly guided by 16 slide bearings. The RBS load stabiliser (vibration damping), with automatic functions at speeds above 7 km/h, allows smooth guidance and operation of the loading system, even under the toughest conditions. The end-of-travel dampers installed in the lifting, telescopic and tilt cylinders underscore the machine's mission to deliver perfect handling in conjunction with superior lifting capacity.

Residual load capacity.

The SCORPION offers high residual load capacity combined with maximum extension and maximum height. This makes the machine easy to operate, while its loading and unloading performance surpasses every expectation, even under the toughest conditions.



The tried-and-tested implement carrier has been further improved.



Lifting heights of up to 8.75 metres.

With lifting heights of between 6.15 and 8.75 metres, the SCORPION has the right answer for every range and height.

Lifting capacity of up to 5.5 tonnes.

The SCORPION models cover a lifting capacity range of 3.0 to 5.5 tonnes. In the 9-metre and 7-metre segment, the SCORPION 9055 and 7055 top models can offer an unmatched capacity of up to 5.5 tonnes.

Model	Lifting height (m)	Lifting capacity (t)
9055	8.75	5.5
7055	7.01	5.5
7044	7.01	4.3
7035	7.00	3.5
7030	7.00	3.0
6030	6.15	3.0





Precision for the entire loading system.

The entire loading system can be securely and sensitively controlled with just the right hand. The joystick sits comfortably in the right hand, ensuring good ergonomics and comfort over long working days. The electronically pre-controlled joystick allows an unmatched level of precision for all loading and unloading operations. You can handle everything just the way you want. There are simple and intuitive operations to carry out all the functions a SCORPION is needed for.

- Lower/raise boom
- Extend and retract boom
- Tilt implement carrier upwards/downwards
- 3rd control circuit switch
- Proportional wheel, third circuit, in front on the joystick



Enjoy sensitive handling and the freedom of movement.

It picks up everything while giving you a good all-round view of operations.

The sturdy implement carrier is equipped with reinforced bolts to take any implement. It fits very precisely, ensuring a snug, low-wear connection between the implement carrier and the attached implement.

The end-of-travel damping installed in the tilt cylinder ensures safe, relaxed operations, while the 152° swivel range allows you unmatched freedom of movement in your work. The integrated hydraulic connections are well protected, yet easily accessible.



Sturdy bolts to lock in attached implements

Loading system



CLAAS

7044
SCORPION

40



CPS – CLAAS POWER SYSTEMS.

Optimal drive for best results.

Machine development at CLAAS represents constant striving for an ever-greater level of efficiency, maximum reliability and profitability. Under the name CLAAS POWER SYSTEMS (CPS), we combine the best components into a single drive system.

Maximum power in every situation where and when you need it – ideally matched to the working systems and featuring fuel-saving technology that quickly pays for itself.



Delivering high performance.

Drive assembly.

High-torque, four-cylinder Deutz engines guarantee excellent power delivery in conjunction with low diesel consumption during hauling and materials handling tasks. The engines are available in an output range of 90 to 115 kW, or 122 to 156 hp. The 9055 and 7055 large models feature a 4.1-litre engine, while a 3.6-litre engine is installed in the smaller models. These new generations of engines are distinguished by their tractive power, increased torque of up to 609 Nm and powerful common rail injection systems for minimal diesel consumption.

Model	Engine output (kW/hp) in accordance with ECE R 120
9055	115/156
7055	115/156
7044	90/122
7035	90/122
7030	90/122
6030	90/122



All the control and maintenance points are easily accessible, thanks to the proven engine installation at a 90° angle to the direction of travel.

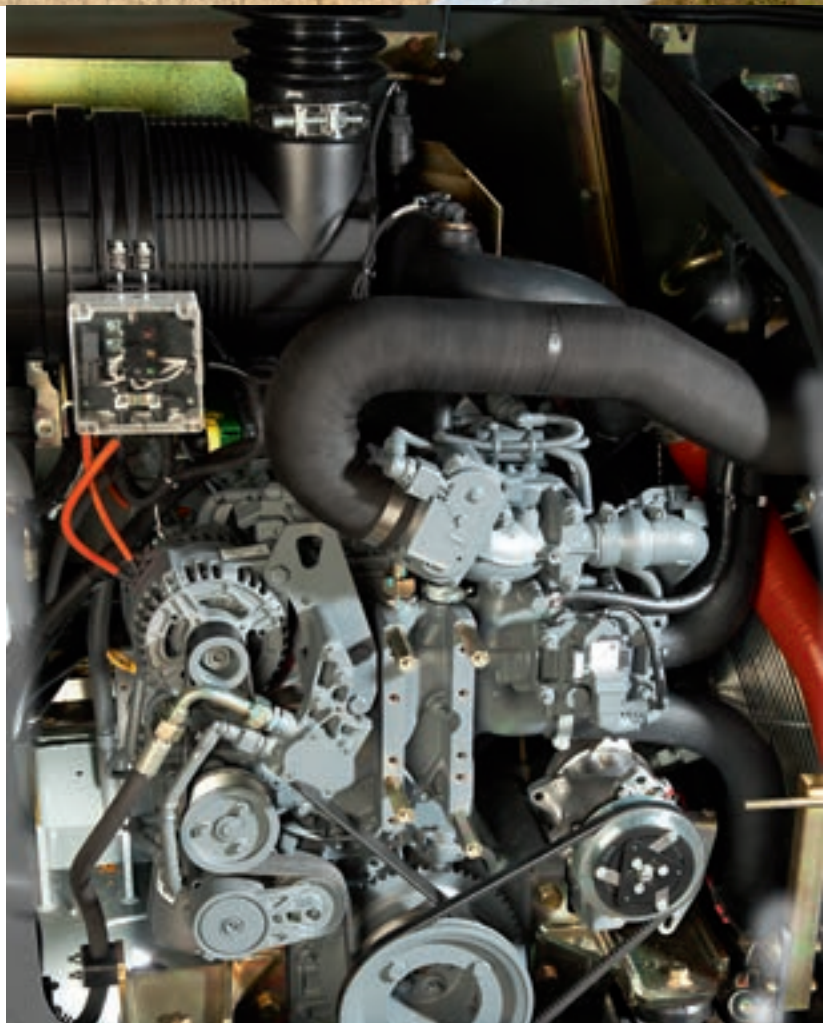


Exhaust gas aftertreatment.

A range of exhaust gas aftertreatment systems are used to ensure that the new engines comply with international emissions standards. An exhaust gas aftertreatment device is attached to the engine for the scope of application of the Stage IIIB emissions standard (Tier 4i). The SCORPION 9055 and 7055 models operate with a diesel particulate filter (DPF) and a diesel oxidation catalytic converter (DOC). In the 7044 to 6030 models, a DOC is sufficient for the aftertreatment of the exhaust gas flow. Passive regeneration takes place without manual intervention by the driver, reducing the latter's workload. The integrated DOC is maintenance-free.

Fuel tank.

The fuel tank has a capacity of 230 litres in the SCORPION 9055, 7055 and 7044, and 120 litres in the SCORPION 7035, 7030 and 6030. This facilitates longer working hours and machine operating times. In addition, the underbody protection for the fuel tank provides maximum safety under even the toughest conditions.



A lockable filling points secures the fuel tank against unauthorised access.

Engine



An even more sophisticated cooling system.

The key features of the SCORPION radiator assembly are its efficiency and intelligent air ducting through the engine compartment. The fan speed is electronically regulated as standard, according to the temperature of the engine oil and hydraulic oil.

The large air intake panels above and to the sides of the bonnet ensure an efficient supply of fresh air. Any dust, dirt or chaff that is thrown up by the movement of the machine is not drawn in directly by the fan wheel, thereby reducing the strain on the SCORPION's cooling system.



Reversible fan.

The large air intake panels can be cleared of dust, chaff or similar obstructions at any time, using the reversible fan. This can be conveniently operated from the cab simply by pressing the reverse action button. The function can be activated at any speed, and afterwards automatically reverts to the correct direction of rotation.

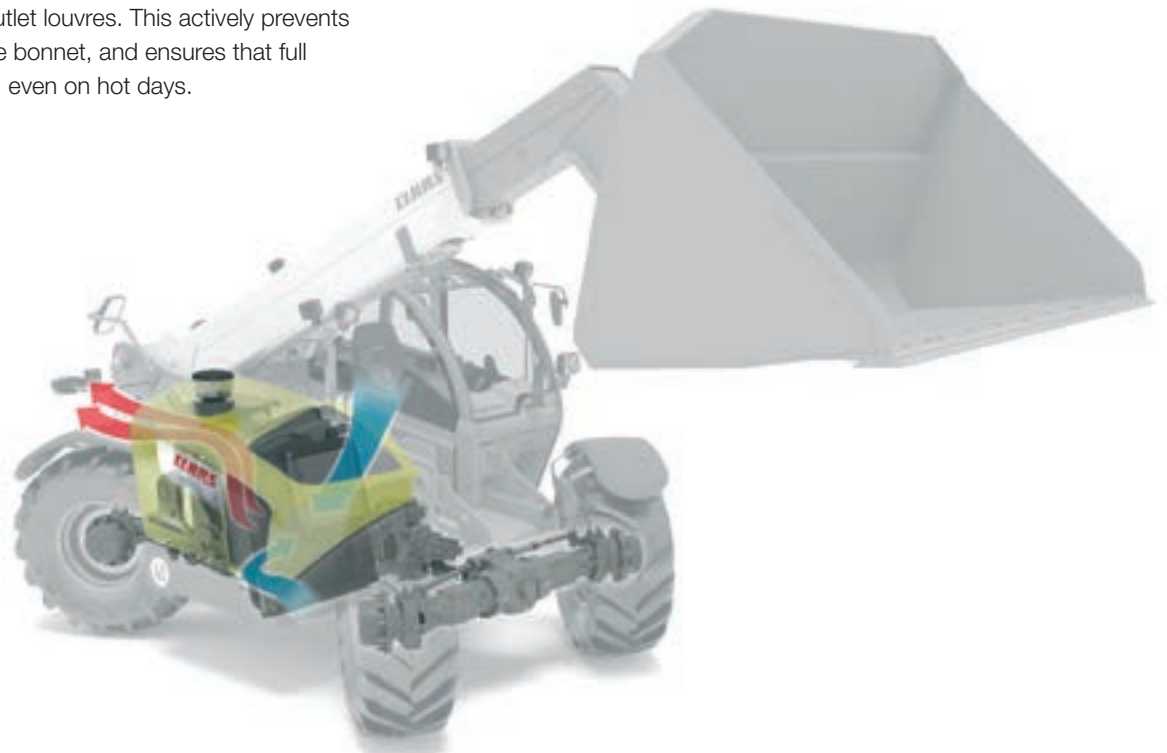


The radiator assembly is easily accessible under the bonnet.

Always clean and efficiently cooled.

Large air intake panels.

The SCORPION features an ingenious heat dissipation system. The heat generated is reliably drawn off by the air ducting from the cooling units passing through the engine compartment to the air outlet louvres. This actively prevents heat building up under the bonnet, and ensures that full power is always available, even on hot days.

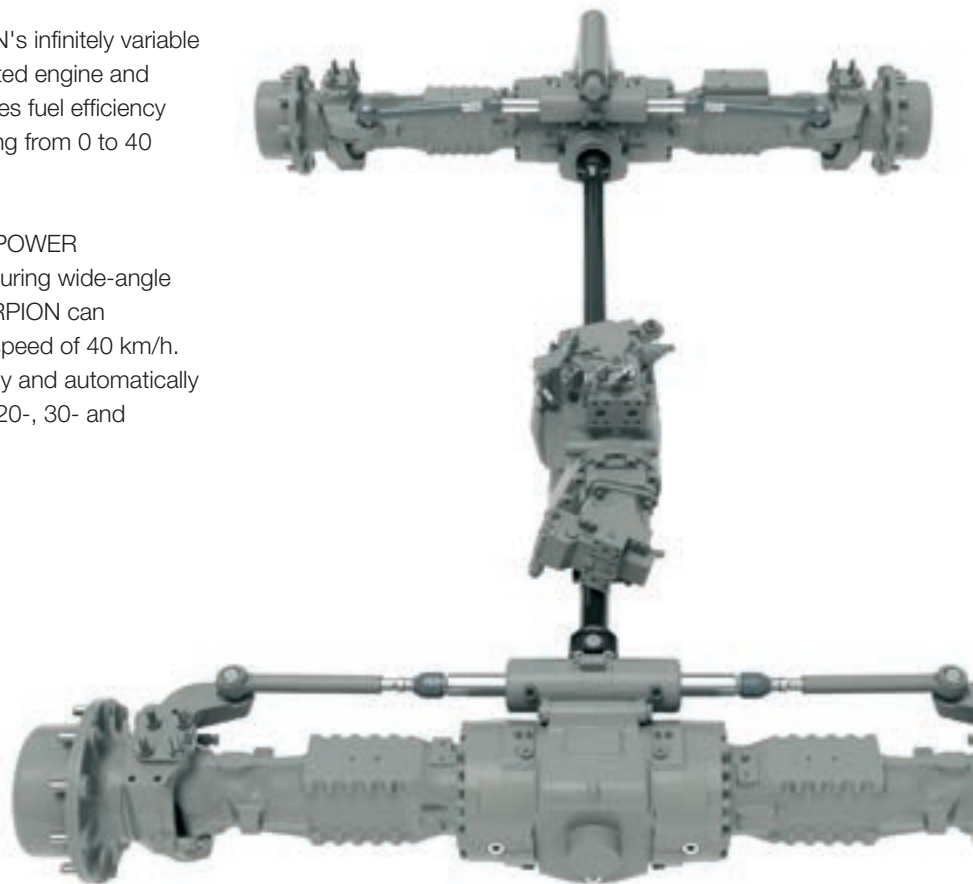


Infinitely variable power in one drive train.

Drive train.

All the benefits offered by the SCORPION's infinitely variable drive train are clear to see. The coordinated engine and transmission management system ensures fuel efficiency and driving comfort without gear changing from 0 to 40 km/h.

At the heart of the drive train is the VARIPOWER transmission with a hydrostatic drive featuring wide-angle swash-plate technology (45°). The SCORPION can therefore accelerate smoothly to its top speed of 40 km/h. The speed and thrust force are constantly and automatically coordinated. All models are available as 20-, 30- and 40-km/h versions.





VARIPOWER. VARIPOWER PLUS.

The intelligent VARIPOWER drive train is distinguished by its superior driving characteristics. Sensitive and extremely precise driving is possible at any speed, in conjunction with perfectly measured thrust force. A swivelling hydrostatic drive is installed in the VARIPOWER PLUS transmission, delivering even greater driving dynamics and thrust force. With a 32° swivel angle, it allows consumption to be controlled even more carefully, while at the same time delivering greater performance.

You can achieve greater performance and driving comfort with this larger-sized drive train.

A perfect line.

The VARIPOWER transmission is installed in the centre of the drive train. The two drive shafts lead directly to the axles without any change of direction, which means that the drive train can generate its full efficiency and effectiveness, while ensuring maximum fuel efficiency.

SMART ROADING.

For even greater driving comfort and efficiency, the engine speed on all SCORPION models can be reduced in the all-wheel and front-axle steering modes. Once the top speed has been reached, the engine speed is automatically lowered to 1,800 or 2,000 rpm.

Accordingly, SMART ROADING facilitates automotive driving, and also offers significant benefits in terms of diesel consumption and noise levels.



Drive train



Three speed ranges to choose from.

The SCORPION drive train allows you to choose between three different speed ranges. The choice of range alters the top speed, and at the same time the sensitivity of the accelerator on the SCORPION. The newly designed joystick incorporates a range of functions that streamline your tasks, while simplifying operations with the SCORPION. You can select a different speed range at any time using the controls at the top of the joystick.

Speed range	Speed
Snail	km/h 0–7
Tortoise	km/h 0–15
Hare	km/h 0–30 / 40

You can select the perfect speed range for each task, whether for a load cycle or transport operation, and with the corresponding level of sensitivity from the drive train. What's more, the transmission is infinitely variable from 0 to 30/40 km/h.

- 1 Shift down ranges
- 2 Shift up ranges
- 3 Change of direction
- 4 Transmission in neutral



The selected speed range and the direction of travel are displayed on the instrument panel on the right.

Infinitely variable driving ranges made easy.



Creep-speed facility and hand throttle.

Do you prefer to work with a constant engine speed and driving speed? With the SCORPION creep-speed facility and the electronic hand throttle, you can do just that. Whether for working in the feed alley, spreading or even clearance work, the SCORPION always delivers just the right amount of oil, while you can control the driving speed using the electronic hand throttle. The regulated creep-speed facility can be used in the Snail and Tortoise speed ranges.

- 1 Electronic hand throttle
- 2 Electronic creep-speed facility

A solid grip on every terrain.

Parking brake.

The parking brake is in an easily accessible position just to the right of the steering wheel in the 9055, 7055 and 7044 models. It is automatically applied if you leave the vehicle via a seat contact switch. This automatic function enhances overall safety and prevents the machine from rolling away.

The parking brake can be easily released by simultaneously activating the creep-speed facility and the direction of travel selector. This means operators do not have to change their hand position in the cab.

The handbrake can still be applied using the handbrake switch. In the 7035, 7030 and 6030 models, it is operated mechanically with the control on the left of the driver's seat.



Brake/inching pedal.

By depressing the brake/inching pedal, the speed of the SCORPION is reduced while the engine speed remains constant. Fully depressing the pedal activates the brake function.



The suspended pedals make it easier to remove the cab floor, and they are optimally positioned for ergonomic foot positioning.



There is a mechanical handbrake on the left of the seat in the 3-t and 3.5-t machines.



Differential lock.

For working under tougher conditions, the 7035 to 6030 models feature a permanent self-locking differential of 45 percent. A 100-percent engageable locking differential is installed in the models 9055 to 7044. It is activated by simultaneously depressing the brake/inching pedal and the button on the back of the joystick.

All-wheel disengagement.

The SCORPION models feature all-wheel disengagement, which offers benefits such as reduced tyre wear and fuel consumption when travelling on the road and also for operations on the farm, along with an enhanced overall level of efficiency.



100% differential lock in the SCORPION 9055, 7055, 7044
 45% differential lock in the SCORPION 7035, 7030, 6030

Running gear



Balletic grace on four wheels.

The hydrostatic steering offers three steering modes, capable of dealing with every situation:

- Front-axle steering
- All-wheel steering
- Crab steering (diagonal steering)

All-wheel steering allows high manoeuvrability in tight spaces, whether in the barn or stable, or out in the field. Crab steering offers a further option in the shape of a side offset. Using the front-axle steering, you have the option of rapidly shifting to the usual handling of an agricultural machine with front steering.

With front-axle steering, you can achieve a maximum speed of 40 km/h or 30 km/h, depending on the configuration variant. All-wheel steering gives a top speed of 30 km/h. Using crab steering, the maximum speed is 15 km/h.



Steering modes for a wide range of applications

Three ways to find an answer for every situation.

Manoeuvrability.

The SCORPION boasts unmatched manoeuvrability in its all-wheel steering mode. Its range of steering modes offers benefits for loading cycles of every kind. When steering above the zero point, the steering axles are always electronically synchronised. In addition to the different steering modes that can be selected, the steering lock of 40° on the wheel hubs enhances the highly flexible steering features of the SCORPION.

Adjusting the steering mode.

There is a rotary pushbutton to adjust the steering mode behind the joystick. Simply by pressing and then turning it, the steering mode can be changed quickly and safely at any time. With its position directly behind the joystick, it can be conveniently operated by the driver. The steering mode selected is displayed on the instrument panel. The steering modes can also be selected while driving.

Hydraulic levelling and pivoting axle lock.

In the SCORPION 9055, hydraulic levelling of $\pm 10^\circ$ is possible between the frame and the front axle. This function compensates when the SCORPION is positioned on uneven ground, allowing you to work precisely even when there is a transverse tilt on sloping terrain. In the 9055, 7055 and 7044 models, there is the additional option of a mechanical pivoting axle lock for the floating rear axle.



The steering mode can be safely and conveniently adjusted using the rotary pushbutton.

Running gear

Hydraulics – performance counts.

A guarantee of high performance.

Rapid movements of the loading system in interaction with the versatile drive system allow the SCORPION to deliver outstanding performance in load and unload modes. All models feature load-sensing hydraulic systems and load-independent proportional valves.

This means you always have full power available, whenever and wherever you need it. All hydraulic functions for the operation of the loading system can be executed simultaneously.

The larger 9055 and 7055 models have a hydraulic output of 187 l/min, while the other models have a highly respectable 140 l/min. Up to two double-acting spool valves can be used on the implement carrier. An external circle with a pressure line, unpressurised return line and an overflow oil line can be ordered ex factory for special tools, such as a pruning saw. The flow rate can be conveniently set using the potentiometer.



Two double-acting connections on the implement carrier



A single-acting, supplementary hydraulic connection moved to the top of the boom



External pressure release for the third control circuit.

Do you want to be able to connect equipment quickly and simply? Straightforward and, more importantly, rapid changes of tools are possible only if no pressure is exerted on the couplings. This prevents any unwanted oil losses or broken gaskets in the couplings. This task is now very easy to perform using the new third control circuit decompression facility in the gooseneck of the telescopic arm on the SCORPION. The third control circuit decompression button can be found on the front left in the direction of travel, on the gooseneck. By pressing the button, the connections to the implement carrier can be depressurised while the engine is running.

Rear hydraulics.

At the rear of the machine, there is a single- and a dual-acting connection with a collection tank for the leak oil. This means that additional hydraulic consumers, such as a tipper connection, can be connected to the SCORPION. The SCORPION also features a hydraulic trailer brake valve as an alternative to the air brake system.



Hydraulic connections at the rear with collection tank and air brakes

Working hydraulics

Assistance for greater productivity.

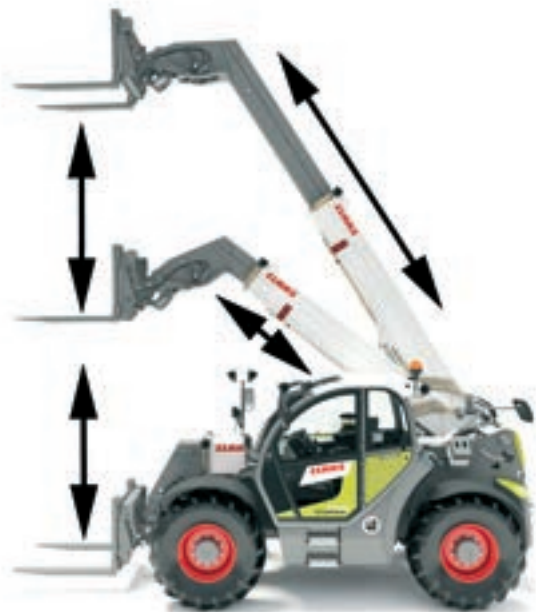




The driver assistance systems in the SCORPION telehandlers offer innovative functions that improve convenience, increase productivity and enhance safety.

Driver assistance systems

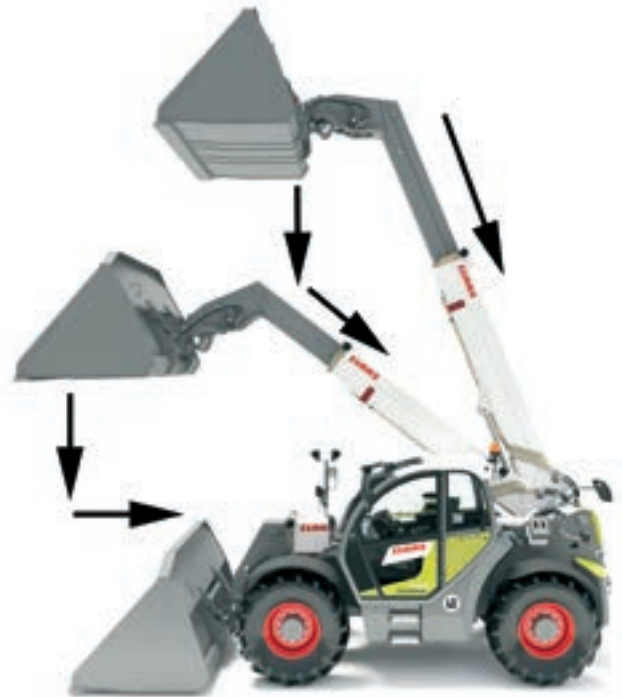
Making life easier – SMART HANDLING and bucket return.



Stacking mode with integrated vertical lift.

You can execute precise lifting and lowering movements in stacking mode by using the vertical lift function. The implement carrier, and with it the load, are maintained in a straight line when lifting or lowering. The stacking mode with vertical lift is therefore the ideal operating mode for stacking tasks.

The benefits are obvious – the driver doesn't need to make manual corrections on the joystick using the retraction and extension controls. Automatic retraction can be manually overridden until the overload limit is reached while lowering the loading system. The lift speed of the loading system is also automatically adjusted to the load.



Bucket mode.

The bucket mode is the ideal mode to use when loading bulk materials. The steps of lowering and retracting the boom are automatically performed in parallel.

The telescopic boom is automatically retracted in bucket mode when the loading system is being lowered, irrespective of the lifting height or the load on the system. Automatic retraction of the boom can be overridden until the overload limit is reached. Once the overload limit is reached, all functions except boom extension can be operated again as usual.



Manual mode.

No automatic functions for boom retraction or extension are active in manual mode. In other words, all the functions in the loading system can be manually engaged by the driver until the overload limit is reached.

If the overload limit has been reached, but only when the loading system is being lowered or raised, the function in question is throttled and finally switched off. This ensures a safe working environment even in manual mode. All functions can be used again once the load on the loading system returns to the safe range.



1 Bucket return

Bucket return.

Daily tasks are simplified by the automatic bucket return function that is integrated into the joystick. If the position of the implement carrier has been stored, you can always return to the same position with just a push of a button on the joystick.

This means a considerably reduced effort for the driver. Particularly in combination with the different SMART HANDLING functions, the automatic return feature makes work a whole lot easier.





A working area designed for productivity and convenience.

Cab

Climb in and feel right at home.



New standards for cab convenience.

The outstanding features of the cab design include generous provision of space and perfect all-round visibility. With equipment features such as a refrigerated storage compartment, revised ergonomic pedal arrangement and a radio with Bluetooth interface, the SCORPION can meet even the most individual of requirements. On request, new models can be fitted with a dynamically sprung seat. So, all in all, you can feel completely at home, in the most comfortable SCORPION work environment yet.

A good view – the two-section door.

The lower part of the door is made of glass, giving an excellent view of the lower, left side of the SCORPION.

Independently of the lower part, the upper door section in the SCORPION can be folded back either just a little, or fully.

Clear layout of the working area.
Green: hydraulic functions
Blue: driving functions
Grey: electrical functions
Red: safety





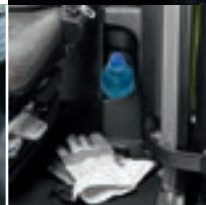
Clearly laid-out instrument panel.

The right-hand side of the instrument panel is set at a slight angle. The gauges in the A-pillar provide information on the SCORPION's driving and operating modes. The displays all lie perfectly within the driver's field of vision, allowing constant monitoring. In the 9055, 7055 and 7044 models, the joystick is connected to the driver's seat, while in the 7035, 7030 and 6030 models it is positioned at the edge of the cab.

Thanks to the conveniently positioned displays and controls, the driver can respond quickly in every work situation. Even at the end of a long day, the machine can still always be operated safely, thanks to backlighting on all gauges and controls.



The upper door section can be released by pulling a lever in the cab.



Ergonomics



All-round view.

The large glass panels ensure unobstructed views of the SCORPION's surroundings. You have all attached implements clearly in view through the one-piece, deep-set windscreen.

A start-off mirror on the right side of the machine ensures an even better overview, extending the driver's vision to corners in the rear area that are difficult to see.

The PROFI CAM with in-cab screen covers the front right area of the implement carrier, and an additional camera can be installed to obtain a better view of the rear connections.



The inside safety guard prevents deposits forming on the windscreen



Heated rear and side windows



Always 360° –
365 days a year.



Always comfortable cab conditions.

On hot or cold days, the generously sized air vents with integrated heating and air conditioning can be precisely adjusted to the driver's preferences using individually adjustable jets.



LED headlights for perfect illumination.

If you haven't finished work before dark, there are working lights to light up the entire work area around the machine, ensuring you can see exactly what you are doing. For even more demanding situations, LED headlights can illuminate the entire surroundings of the SCORPION almost as brightly as daylight.

Electric mirror adjustment and heating for the right-hand exterior mirror, positioned immediately behind the joystick.



Comfort

It should be possible to carry out maintenance work easily by hand – no matter where.

Maintenance that saves you time.

As we all know, when it comes to maintenance, anything that is not easily accessible is often simply skipped. For that reason, we've placed an emphasis on keeping maintenance simple in the SCORPION. The cab floor can be easily removed and cleaned.

Lubrication points that are hard to get at have been bundled into lubrication banks. As an optional extra, a central lubrication system can be installed ex factory, to ensure a continuous and reliable supply of lubrication.

We speak the same language.

CLAAS dealers are among the most efficient agricultural technology companies in the world. Not only are they highly trained and equipped with specialist tools, they are also very familiar with the way farmers and contractors operate. So they understand your expectations and can meet your requirements with regard to professional competence and reliability.



Maintenance work in the engine compartment can be performed while standing, thanks to the wide opening angle of the bonnet.



There is ample space for belts, grease guns, etc. in the stowage compartments in the counterweights on the 9055, 7055 and 7044 models.



When you give your all every day, you deserve the best service.

You can rely on professional and reliable support from the CLAAS service team at all times. Around the clock and all over the world, CLAAS importers and dealers are committed to providing a fast supply of spare parts and a customer service you can trust.

For peace of mind – CLAAS service products.

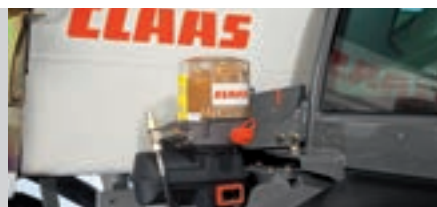
Increase reliability, minimise the repair and breakdown risk, and base your calculations on predictable costs. With CLAAS service products, you can create your own service package from a range of components to meet your own specific requirements. Three service packages are available:

- CLAAS Post-harvest check
- CLAAS CARE
- CLAAS MAXI CARE

The benefits at a glance:

- Longer machine service life
- Professionally equipped dealer workshop
- Advice on specialist equipment and retrofitting
- Your machine maintained in top working condition
- Downtime minimised
- Fixed cost planning
- Long-term value retention
- Recommended use of ORIGINAL CLAAS parts and service products

Central lubrication system for automatic lubrication of all lubrication points



Maintenance

Everything from a single source –
attached implements for your
SCORPION.





Benefit from the variable range of uses for CLAAS attached implements – all perfectly tailored to your SCORPION.

Attached implements

Attached implements.

CLAAS offers a huge range of high-performance working implements for your SCORPION ex factory. All implements have been purposefully engineered and tailored to the machine's efficient load-handling system.

These implements, customised for the particular model, will help you realise the full potential of your SCORPION model.

Pallet fork



Width (mm)	Weight (kg)	Tine length (mm)	Load capacity (kg)	LC	9055	7055	7044	7035	7030	6030
1200	242	1200	3000	500	-	-	-	-	-	-
1200	300	1200	3500	500	-	-	-	□	□	□
1200	301	1200	4500	500	-	-	□	-	-	-
1200	392	1200	5000	600	□	□	-	-	-	-
1500	330	1200	4500	500	□	□	□	□	-	-

Pallet fork with side shift



Width (mm)	Weight (kg)	Tine length (mm)	Load capacity (kg)	LC	9055	7055	7044	7035	7030	6030
1350	465	1200	4100	500	-	-	-	-	-	-
1350	465	1200	4100	500	-	-	□	□	□	□
1200	610	1200	5000	600	□	□	-	-	-	-
1600	545	1200	4500	600	-	-	□	□	□	□

Parallel side shift: +/- 100 mm

Pallet fork, floating



Width (mm)	Weight (kg)	Tine length (mm)	Load capacity (kg)	LC	9055	7055	7044	7035	7030	6030
1200	324	1200	4100	500	-	-	-	-	-	-
1200	324	1200	4100	500	-	-	□	□	□	□
1200	423	1200	5000	600	□	□	-	-	-	-

70 mm vertical range of travel

Pallet fork floating, hydraulic

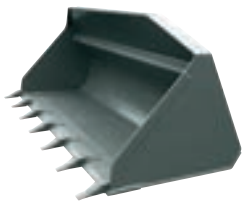


Width (mm)	Weight (kg)	Tine length (mm)	Load capacity (kg)	LC	9055	7055	7044	7035	7030	6030
1200	340	1200	4100	500	-	-	-	-	-	-
1200	340	1200	4100	500	-	-	□	□	□	□
1200	423	1200	5000	600	□	□	-	-	-	-

70 mm vertical range of travel, 300 mm horizontal single-tine side shift hydraulic (1 tine)

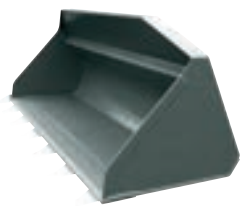
□ Available – Not available

Standard toothed bucket



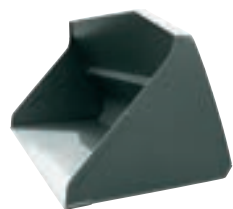
Capacity (m ³)	Width (mm)	Weight (kg)	9055	7055	7044	7035	7030	6030
1.2	2400	589	–	–	–	☐	–	–
1.6	2400	635	–	–	–	–	–	–
1.0	2300	430	–	–	–	☐	☐	☐
1.2	2500	617	☐	☐	☐	–	–	–
1.6	2500	689	☐	☐	–	–	–	–
1.2	2500	617	☐	☐	☐	–	–	–

Standard bucket without teeth



Capacity (m ³)	Width (mm)	Weight (kg)	9055	7055	7044	7035	7030	6030
1.0	2300	435	–	–	–	☐	☐	☐
1.2	2400	551	–	–	–	☐	–	–
1.6	2400	595	–	–	–	–	–	–
1.6	2500	689	☐	☐	–	–	–	–
1.2	2500	589	☐	☐	☐	–	–	–

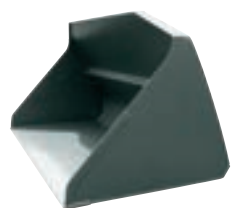
Bulk material bucket



Capacity (m ³)	Width (mm)	Weight (kg)	9055	7055	7044	7035	7030	6030
1.4	2300	561	–	–	–	☐	☐	☐
1.8	2500	682	☐	☐	☐	☐	–	–
2.5	2500	900	☐	☐	☐	–	–	–

With bolted scraping rail

Super bulk material bucket



Capacity (m ³)	Width (mm)	Weight (kg)	9055	7055	7044	7035	7030	6030
2.0	2400	700	–	–	–	☐	☐	☐
3.0	2500	953	☐	☐	☐	–	–	–
4.0	2900	1120	☐	☐	–	–	–	–

With bolted scraping rail

Grab bucket



Capacity (m ³)	Width (mm)	Weight (kg)	9055	7055	7044	7035	7030	6030
1.09	2400	999	☐	☐	☐	–	–	–

With rotatable scraping rail

☐ Available – Not available

Bulk material bucket



Capacity (m³)	Width (mm)	Weight (kg)	9055	7055	7044	7035	7030	6030
1.3	2400	1003	☐	☐	☐	–	–	–
1.6	2400	1090	☐	☐	☐	–	–	–

With bolted scraping rail
With transport bolt for shredder

Crane boom



Capacity (m³)	Width (mm)	Weight (kg)	Load capacity (kg)	9055	7055	7044	7035	7030	6030
–	–	235	3200	☐	☐	☐	☐	☐	☐

Crane length 1300 mm

Grab bucket 617 AS (new version), 618 A, 619 XL



Capacity (m³)	Width (mm)	Weight (kg)	9055	7055	7044	7035	7030	6030
1.3	2300	775	☐	☐	☐	☐	☐	☐
1.9	2400	850	☐	☐	☐	☐	–	–
2.4	2400	1130	☐	☐	☐	☐	–	–

Grab bucket BMSA 230, BMSA 250



Capacity (m³)	Width (mm)	Weight (kg)	9055	7055	7044	7035	7030	6030
1.38	2300	600	☐	☐	☐	–	–	–
1.5	2500	650	☐	☐	☐	–	–	–

BMSA 230 with with 8 level tines
BMSA 250 with 10 level tines
Including pressure-limiting valve, wear meter, side panels

Turnip basket



Capacity (m³)	Width (mm)	Weight (kg)	9055	7055	7044	7035	7030	6030
2.0	2400	590	☐	☐	☐	–	–	–

☐ Available – Not available

Manure and silage pincers	Capacity	Width	Weight	9055	7055	7044	7035	7030	6030
	(m ³)	(mm)	(kg)						
	2.3	2300	610	☐	☐	☐	☐	☐	☐
	2.5	2500	680	☐	☐	☐	–	–	–



Combi-gripper CGA 230, CGA 255	Capacity	Width	Weight	9055	7055	7044	7035	7030	6030
	(m ³)	(mm)	(kg)						
	1.15	2300	570	☐	☐	☐	–	–	–
	1.3	2550	610	☐	☐	☐	–	–	–



CGA 230 with 8 level tines on pincer + 10 rounded tines
CGA 255 with 8 level tines on pincer + 10 rounded tines
Including pressure-limiting valve

Round and rectangle bale gripper	Width	Weight	Load capacity	9055	7055	7044	7035	7030	6030
	(mm)	(kg)	(kg)						
	–	350	1500	☐	☐	☐	☐	☐	☐



With combined pressure-holding valve / pressure-limiting valve
Clamping range: 800–1800 mm

Bale gripper for round and square bales	Width	Weight	9055	7055	7044	7035	7030	6030
	(mm)	(kg)						
	1625	380	☐	☐	☐	☐	☐	☐



Including round bale clamp, wrapped bale kit
2 additional tines below, 3 replacement tines for round bale clamp
Including pressure-limiting valve

Bale gripper for round and square bales	Width	Weight	9055	7055	7044	7035	7030	6030
	(mm)	(kg)						
	1625	380	☐	☐	☐	–	–	–



Including round bale clamp, wrapped bale kit
2 additional tines below, 4 replacement tines for round bale clamp
Including pressure-limiting valve

☐ Available – Not available

Bale gripper for round and square bales



Capacity (m³)	Width (mm)	Weight (kg)	Tine length (mm)	9055	7055	7044	7035	7030	6030
–	1800	420	–	☐	☐	☐	–	–	–

5 additional tines below, 6 replacement tines for round bale clamp
Including pressure-limiting valve

Bale skewer



Capacity (m³)	Width (mm)	Weight (kg)	Tine length (mm)	Load capacity (kg)	9055	7055	7044	7035	7030	6030
–	1250	160	1100	1800	☐	☐	☐	☐	☐	☐

3 tines

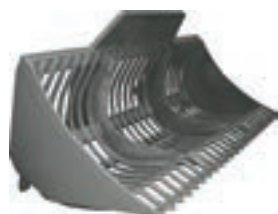
Crop pusher



Capacity (m³)	Width (mm)	Weight (kg)	Tine length (mm)	9055	7055	7044	7035	7030	6030
–	2500	510	–	☐	☐	☐	☐	☐	☐

With steel scraping bar
With 2000-mm extension

Rock basket



Capacity (m³)	Width (mm)	Weight (kg)	Tine length (mm)	9055	7055	7044	7035	7030	6030
0.8	2300	520	–	☐	☐	☐	–	–	–

With spillover guard

☐ Available – Not available

Silage-chopping pincers	Capacity (m ³)	Width (mm)	Weight (kg)	Tine length (mm)	9055	7055	7044	7035	7030	6030
	1.13	1780	910	800	☐	☐	☐	☐	☐	☐



3 cylinders

Snow-clearing blade	Width (mm)	Weight (kg)	Tine length (mm)	9055	7055	7044	7035	7030	6030
	2765 ¹	446	–	☐	☐	☐	–	–	–
	2395 ²	446	–						



¹ Overall width

² Blade width (pivoted 30°)

Paintwork in RAL 1021

Overall height 1020 mm, including pennant holder, flags and lights

Super elastic tyres 250 x 80 mm

Spring flaps with vulkollan scrape rail

Hydro broom	Capacity (m ³)	Width (mm)	Weight (kg)	Tine length (mm)	9055	7055	7044	7035	7030	6030
	0.48	2920	650	–	☐	☐	☐	–	–	–



Hydraulic roller level compensation

Paintwork in seed green

Mechanically swivelling

Waste collection container

Brush roller with 600 mm PPN edging

2600 mm working width

Crate rotator	Width (mm)	Weight (kg)	Tine length (mm)	Load capacity (kg)	9055	7055	7044	7035	7030	6030
	1200	520	1100	3500	☐	☐	☐	–	–	–



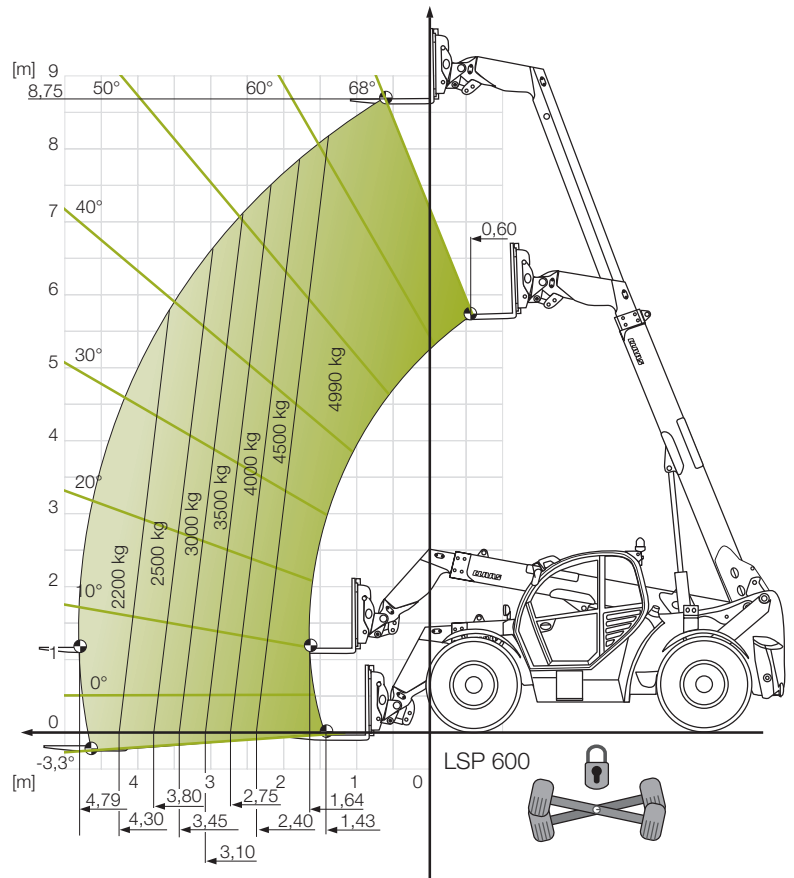
3500 kg load capacity

☐ Available – Not available

Technology in detail.

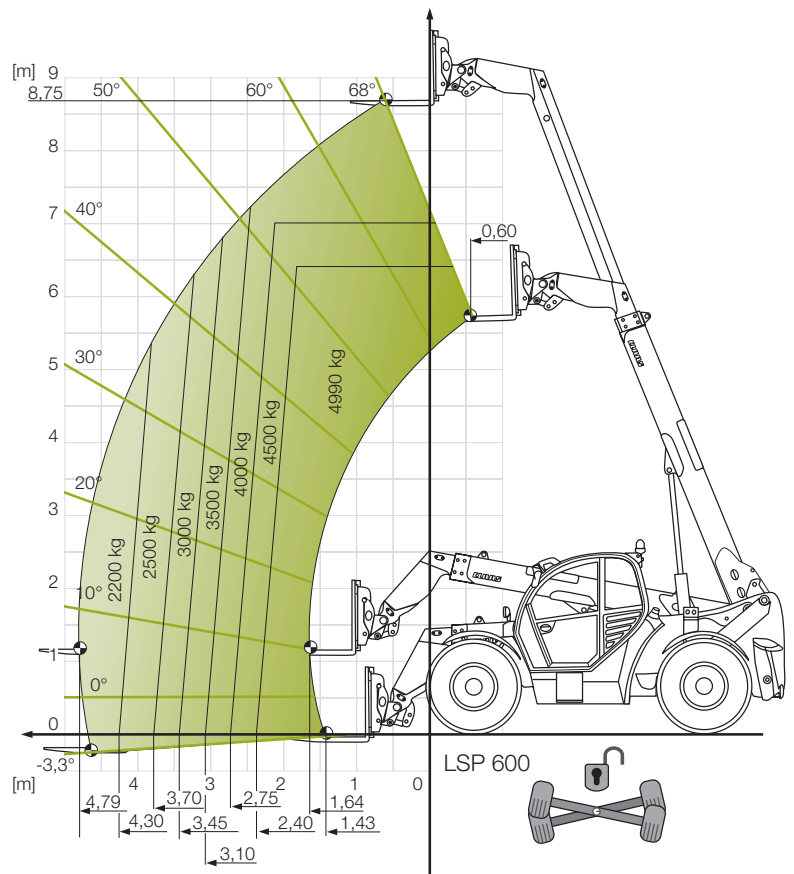
SCORPION 9055

Lifting capacity chart with load centre (LC)
600 mm with pivoting axle lock



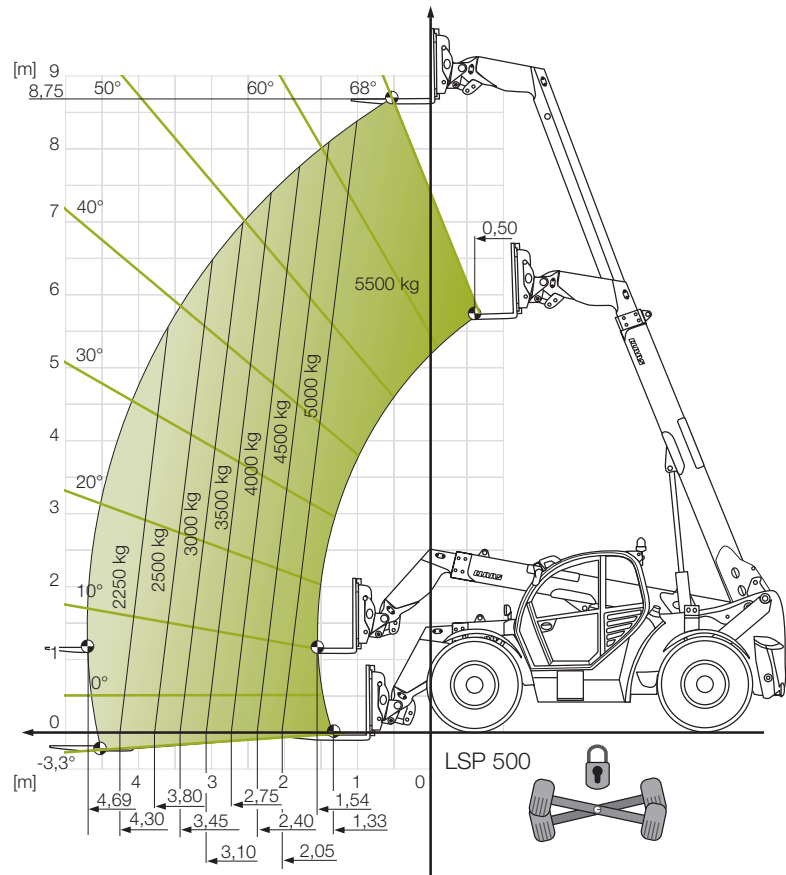
SCORPION 9055

Lifting capacity chart with load centre (LC)
600 mm without pivoting axle lock



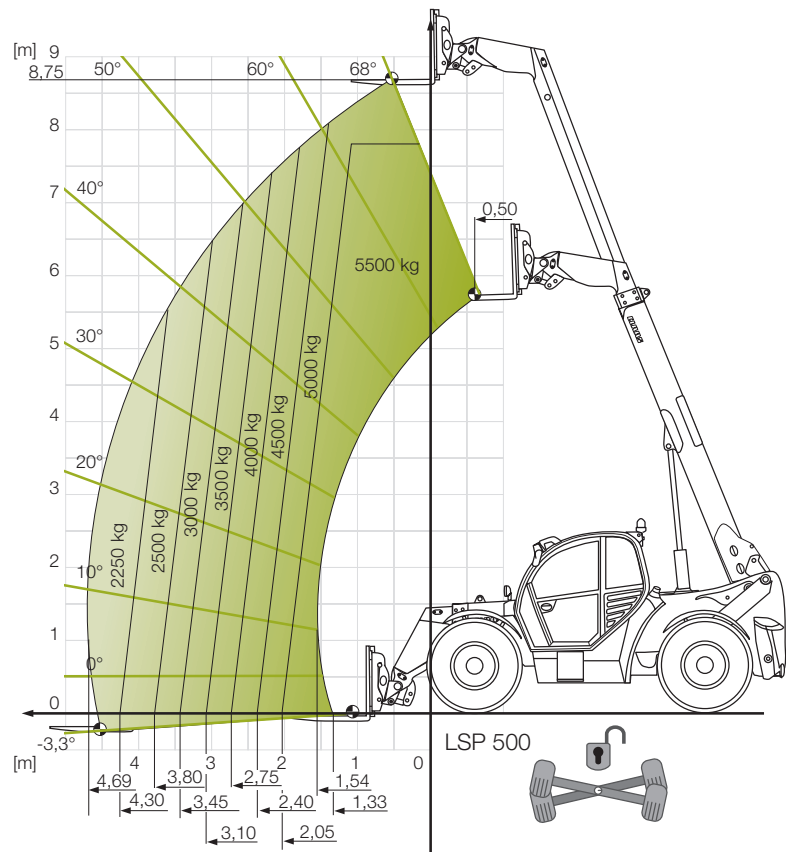
SCORPION 9055

Lifting capacity chart with load centre (LC)
500 mm with pivoting axle lock



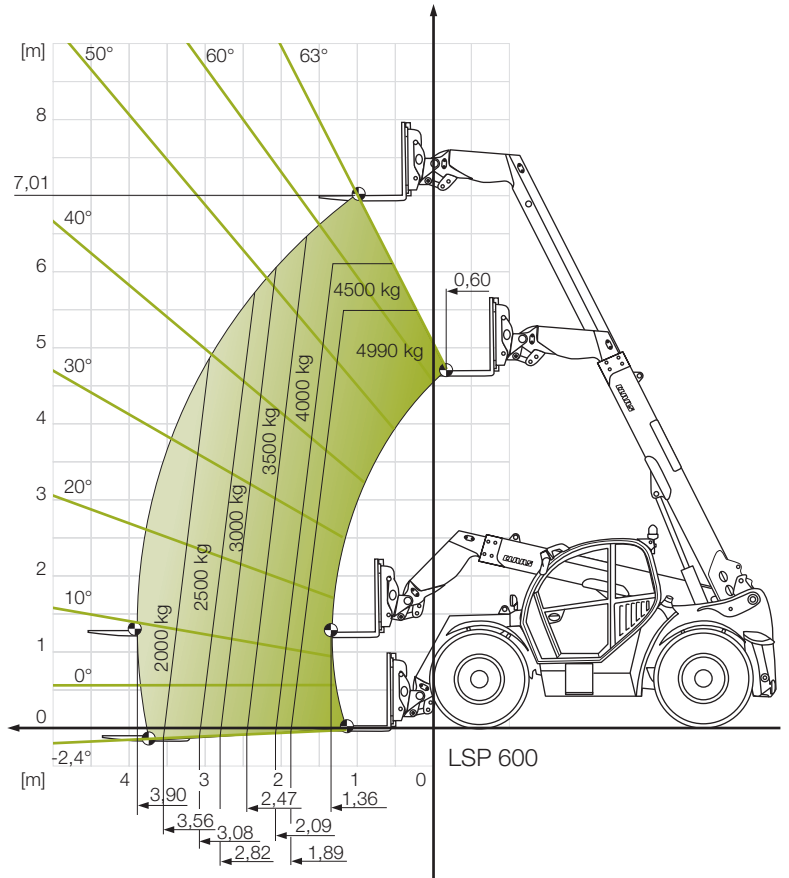
SCORPION 9055

Lifting capacity chart with load centre (LC)
500 mm without pivoting axle lock



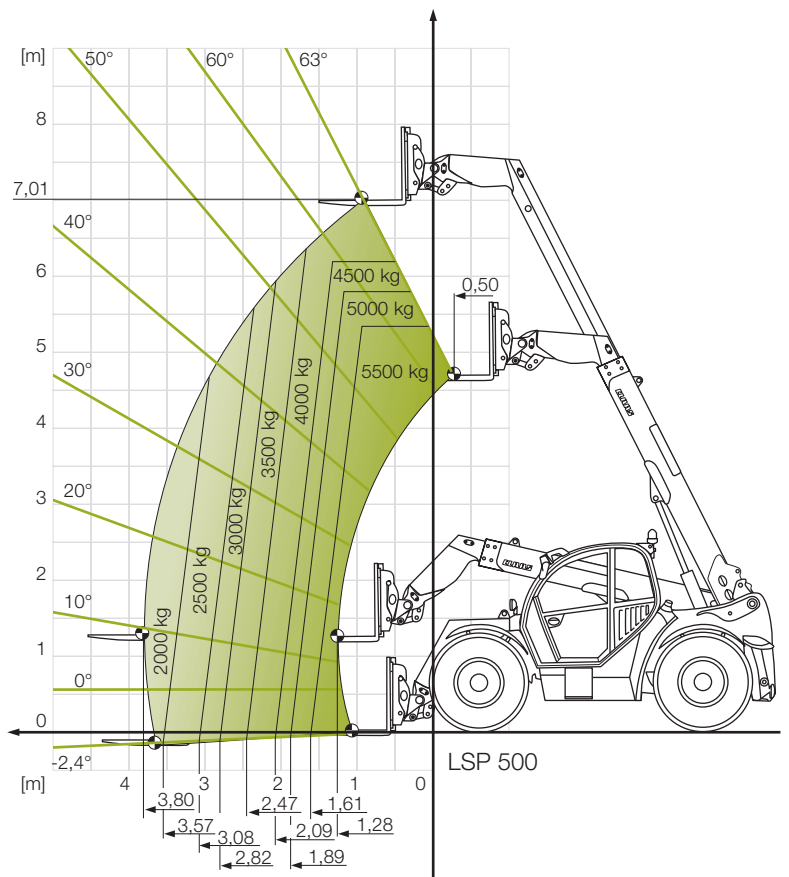
SCORPION 7055

Lifting capacity chart with load centre (LC)
600 mm



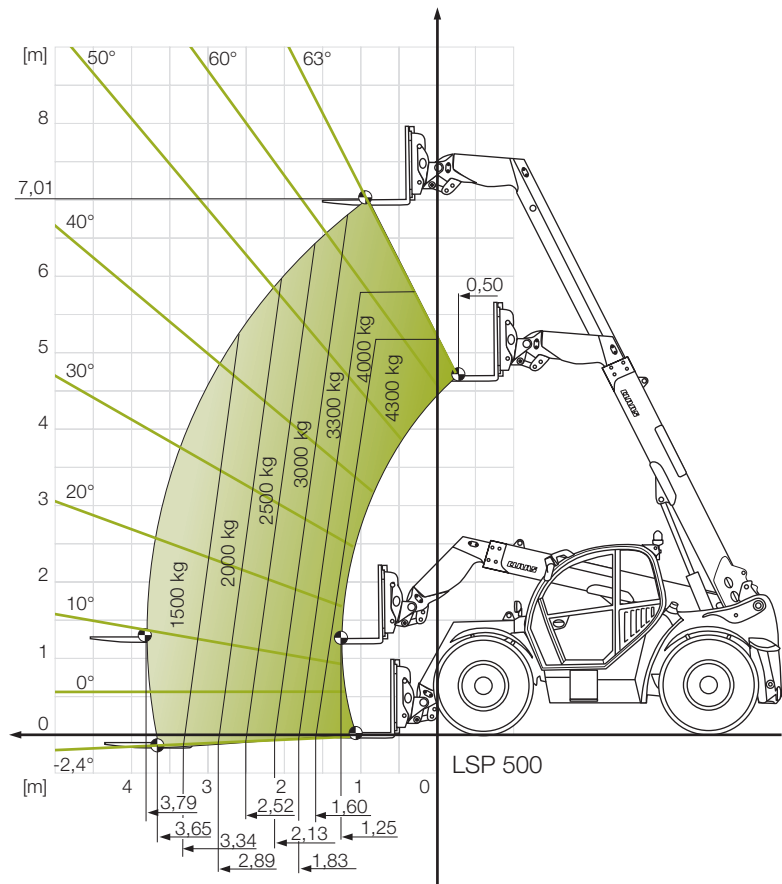
SCORPION 7055

Lifting capacity chart with load centre (LC)
500 mm



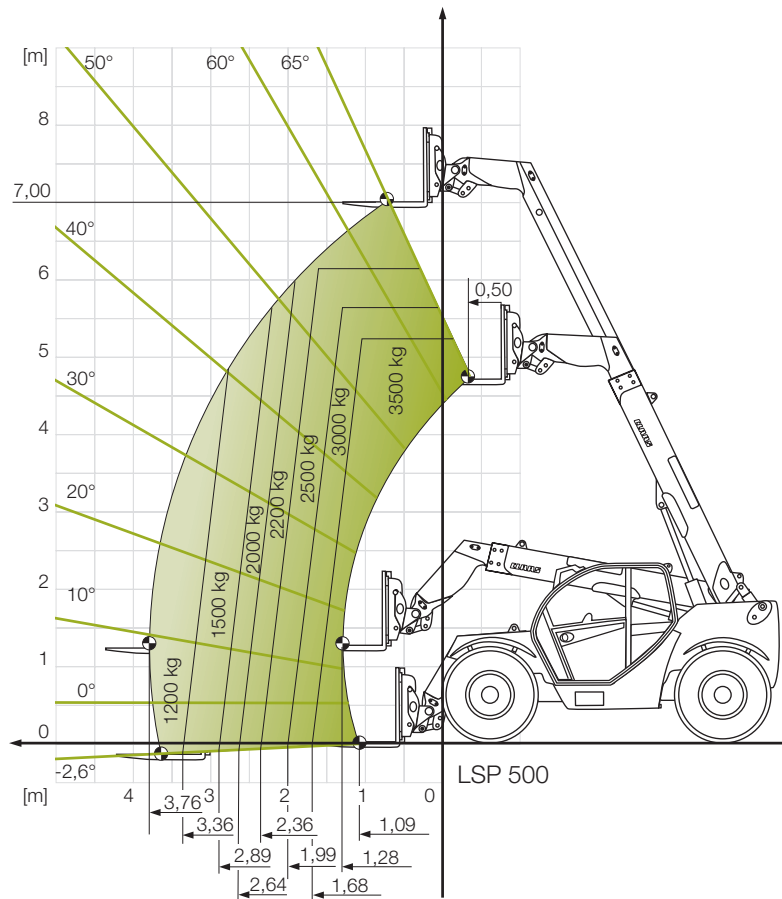
SCORPION 7044

Lifting capacity chart with load centre (LC)
500 mm



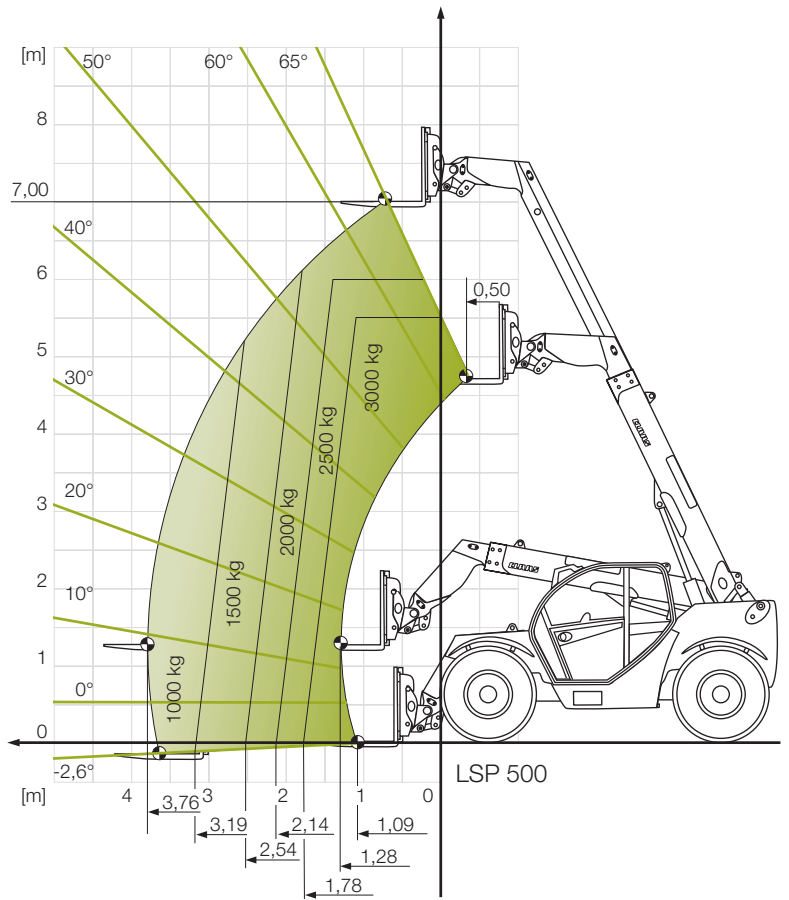
SCORPION 7035

Lifting capacity chart with load centre (LC)
500 mm



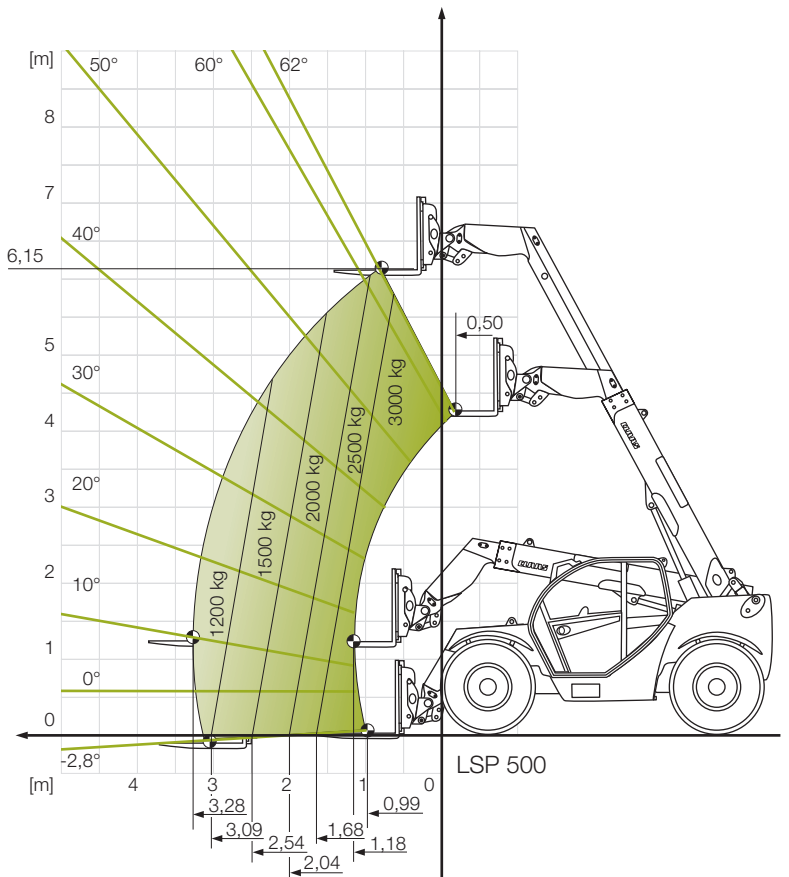
SCORPION 7030

Lifting capacity chart with load centre (LC)
500 mm

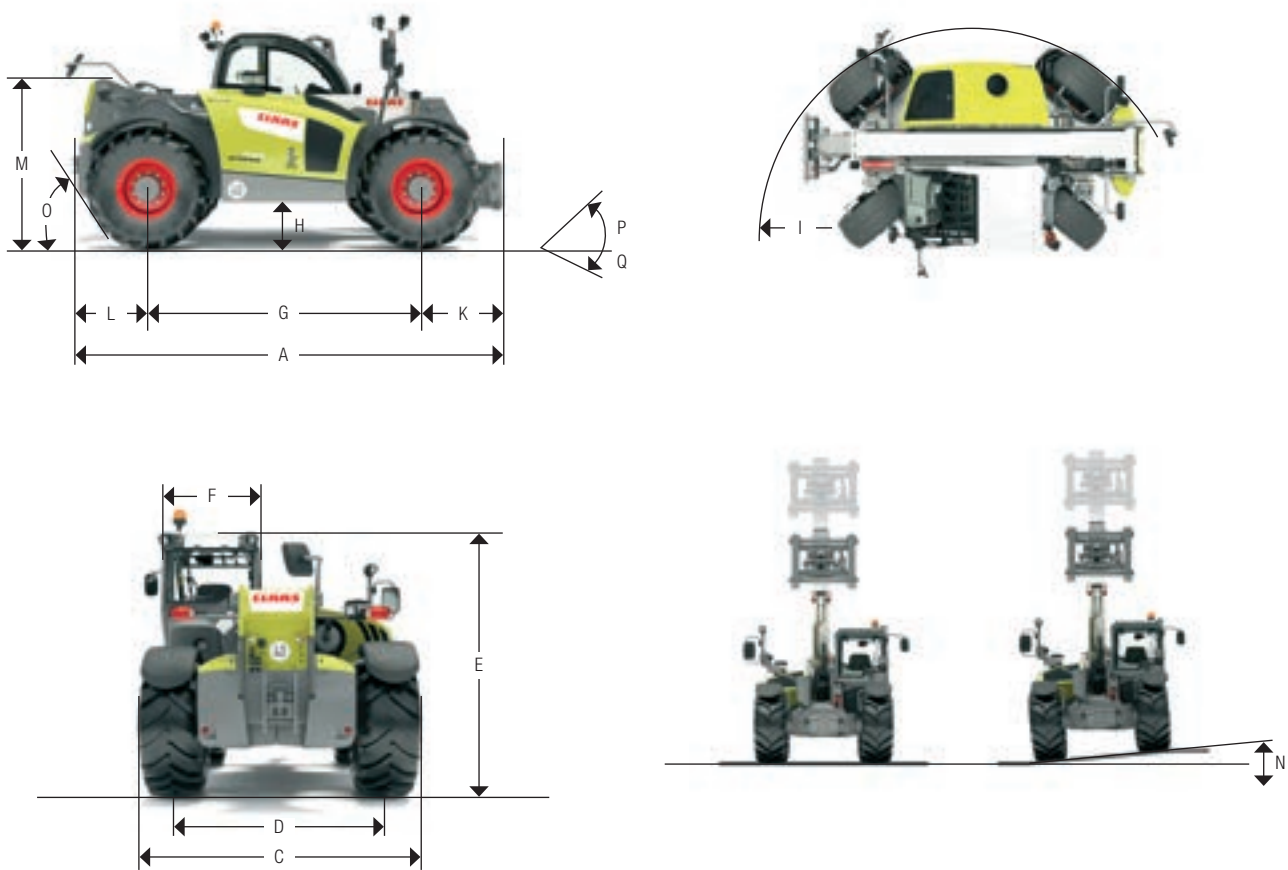


SCORPION 6030

Lifting capacity chart with load centre (LC)
500 mm



SCORPION



		9055 ¹	7055 ¹	7044 ¹	7035 ¹	7030 ¹	6030 ¹	
Dimensions								
A	Length including carriage	mm	5600	4985	4985	4880	4880	4580
C	Maximum width	mm	2500	2500	2500	2280	2280	2280
D	Track width	mm	1995	1995	1995	1880	1880	1880
E	Overall height	mm	2490	2490	2490	2310	2310	2310
F	Cab width	mm	990	990	990	990	990	990
G	Wheelbase	mm	3150	2950	2950	2850	2850	2850
H	Ground clearance	mm	412	418	418	415	415	415
I	Turning radius across wheels	mm	4350	3755	3755	3840	3840	3840
K	Spacing from front-wheel centre line to carriage front plate	mm	1140	950	950	830	830	630
L	Distance from rear-wheel centre line to back of machine	mm	1310	753	753	1200	1200	1100
M	Height to boom	mm	1935	1761	1761	1600	1600	1600
N	Hydraulic levelling	degrees	± 10	–	–	–	–	–
O	Rear approach angle	degrees	32	36.5	36.5	45	45	45
P	Downward tilt angle for pallet forks	degrees	45	45	45	49	49	49
Q	Upward tilt angle for pallet forks	degrees	41	41	41	41	41	41
	Total carriage swivel range	degrees	152	152	152	152	152	152

¹ Values applicable to 460/70 R 24 tyres

– Not available



SCORPION

		9055	7055	7044	7035	7030	6030
Loading system							
Lifting capacity	kg	5500	5500	4300	3500	3000	3000
Lifting height	mm	8750	7017	7017	7000	7000	6150
SMART HANDLING		●	●	●	●	●	●
Bucket return		○	○	○	○	○	○
Pressure release, third control circuit		○	○	○	○	○	○
Engine							
Manufacturer		Deutz	Deutz	Deutz	Deutz	Deutz	Deutz
Model		TCD 4.1 L4	TCD 4.1 L4	TCD 3.6 L4	TCD 3.6 L4	TCD 3.6 L4	TCD 3.6 L4
Output at 2400 rpm (ECE R 120) ¹	kW/hp	115/156	115/156	90/122	90/122	90/122	90/122
Max. torque at 1600 rpm	Nm	609	609	480	480	480	480
Number of cylinders		4	4	4	4	4	4
Cubic capacity	cm ³	4038	4038	3621	3621	3621	3621
Exhaust gas aftertreatment – Stage IIIB emissions standard (Tier 4i)		DOC + DPF	DOC + DPF	DOC	DOC	DOC	DOC
Exhaust gas – aftertreatment Stage IIIA emissions standard (Tier 3)		No exhaust gas aftertreatment			No exhaust gas aftertreatment		
Working hydraulics							
Type		LS	LS	LS	100 l / 210 bar	100 l / 210 bar	100 l / 210 bar
Maximum flow rate		187 l / 260 bar	187 l / 260 bar	140 l / 260 bar	140 l / 250 bar	140 l / 250 bar	140 l / 250 bar
Spool valve		4- to 7-fold pilot operation			4-fold (standard) 5-fold (optional)		
Drive train							
Hydrostatic		VARIPOWER PLUS	VARIPOWER PLUS	VARIPOWER	VARIPOWER	Hydrostat/ VARIPOWER	Hydrostat/ VARIPOWER
Driving ranges	km/h	0–7 / 0–15 / 0–30 / 40	0–7 / 0–15 / 0–30 / 40	0–7 / 0–15 / 0–30 / 40	0–7 / 0–15 / 0–30 / 40	0–7 / 0–15 / 0–30 / 40	0–7 / 0–15 / 0–30 / 40
Top speed	km/h	30/40	30/40	30/40	30/40	30/40	30/40
SMART ROADING		○	○	○	○	○	○
Tank capacity							
Diesel fuel tank ²	l	230	230	230	120	120	120
Hydraulic oil tank / hydraulic oil total	l	100/200	100/190	100/190	100/170	100/170	100/170
Axles							
Front/rear axle		Locking differential 100%			Self-locking differential 45%		
Front differential lock		Locking differential 100%			Self-locking differential 45%		
Steering lock	degrees	40/40	40/40	40/40	40/40	40/40	40/40
Hydraulic levelling + / –	degrees	10	–	–	–	–	–
Pivoting axle lock mechanical/rear axle		○	○	○	–	–	–

● Standard ○ Optional – Not available

SCORPION

		9055	7055	7044	7035	7030	6030
Operating and parking brake, 40-km/h version							
Type		Hydraulic two-circuit power brake (discs)			Foot operated hydraulic disc brake		
Location		Front and rear axle			Axle input on front axle, as an option additionally on the rear axle		
Parking brake							
Type		Electrohydraulic disc brake			Hand-operated mechanical disc brake		
Location		Spring accumulator on front axle and via drive shaft on rear axle			Axle input on front axle		
Steering							
Steering type 0–30	km/h	All-wheel steering, crab steering			All-wheel steering, crab steering		
Steering type 0–40	km/h	Front-axle steering			Front-axle steering		
Weights							
Tare weight ³	kg	10,620	9200	7900	6950	6700	6400
Permissible total weight	kg	12,500	12,500	11,000	9000	9000	8500

	9055 / 7055	7044	7035 / 7030 / 6030
Tyres			
Tyre sizes	460/70–24 IND 159 A8 TR01	460/70–24 IND 159 A8 TR01	460/70–24 IND 159 A8 TR01
	460/70 R24 159 A8 XMCL	460/70 R24 159 A8 XMCL	460/70–24 159 A8 XMCL
	460/70 R24 159 A8	460/70 R24 159 A8	460/70–24 159 A8 / 159 B A-580
	460/70 R24 IND TL 159 A8	460/70 R24 IND TL 159 A8	405/70–20 152 B 16 PR MPT 01
	17.5–25 16 PR EM-60 TBL 158 B	17.5–25 16 PR EM-60 TBL 158 B	405/70–24 151 D MPT 04
	500/70 R24 157 A8 IT 530	500/70 R24 157 A8 IT 530	405/70–24 152 B MPT 01
	500/70 R24 164 A8 XMCL	500/70 R24 164 A8 XMCL	405/70–24 158 A2 / 146 B SPT 9
	440/70 R28 IND 152 A8 AC	440/70 R28 IND 152 A8 AC	425/75–20 XZSL 167 A2 / 155 B
	600/55–26.5 I-3 16 PR 159 A/156 B	600/55–26.5 I-3 16 PR 159 A/156 B	
	460/70 R24 159 A8/159 B	460/70 R24 159 A8/159 B	
	500/70 R24 164 A8/164 B	500/70 R24 164 A8/164 B	

¹ In accordance with ISO 14396 ² In accordance with DIN 51628 ³ Without implements, with operator and full diesel tank

CLAAS continually develops its products to meet customer requirements. This means that all products are subject to change without notice. All descriptions and specifications in this brochure should be considered approximate and may include optional equipment that is not part of the standard specifications. This brochure is designed for worldwide use. Please refer to your nearest CLAAS dealer and their price list for local specification details. Some protective panels may have been removed for photographic purposes in order to present the function clearly. To avoid any risk of danger, never remove these protective panels yourself. In this respect, please refer to the relevant instructions in the operator's manual. All technical specifications relating to engines are based on the European emissions regulation standards: Stage. Any reference to the Tier standards in this document is intended solely for information purposes and ease of understanding. It does not imply approval for regions in which emissions are regulated by Tier.

When you're serious about what you do – the benefits for you.

Cab

- Spacious cab
- Perfect all-round view
- Attractive cab design with excellent ergonomics
- Backlit cab instruments
- Systematic two-hand operation

Drive train

- VARIPOWER PLUS
- Infinitely variable driving up to 40 km/h
- Direction control via joystick
- High-torque Deutz engines developing up to 115 kW/156 hp
- 230-l fuel tank for long working days
- SMART ROADING for minimised driving noise and reduced fuel consumption
- All-wheel disengagement
- Hand throttle with creep-speed facility

Loading system

- Lifting capacity from 3.0 to 5.5 t
- Lifting heights from 6.15 to 8.75 m
- Hydraulic levelling
- Hydraulic output of up to 187 l/min
- End-position dampening in telescopic, main lift and tilt cylinders
- Vibration dampening with automatic function

Driver assistance

- Bucket return function for convenient repositioning of implement carrier
- SMART HANDLING to ease your workload and increase productivity



CLAAS UK
Saxham
Bury St. Edmunds
Suffolk
IP28 6QZ
Tel 01284 763100
claas.co.uk
info-uk@claas.com
401012130314 KK ME 0414